



# RMG

RANDY M. GOODLOE, AIA, APAC  
*A Professional Architectural Corporation*

June 3, 2026

725 KIRBY ST.  
LAKE CHARLES  
LA, 70601

OFFICE  
(337) 436-3036

FAX  
(337) 436-3773

**Project:** New Ford Pro for Mike Willis

**Addendum No. 1**

---

Note: This addendum shall become part of the contract and contract documents and the contractor shall be responsible for each item included in this addendum.

Item No. 1 - See revised Architectural sheets A-103, A-201, A-250, & A-251

Item No. 2 - See revised Civil sheets C-101 R1 & C-102 R1

End of Addendum No. 1

WWW.GOODARCH.COM

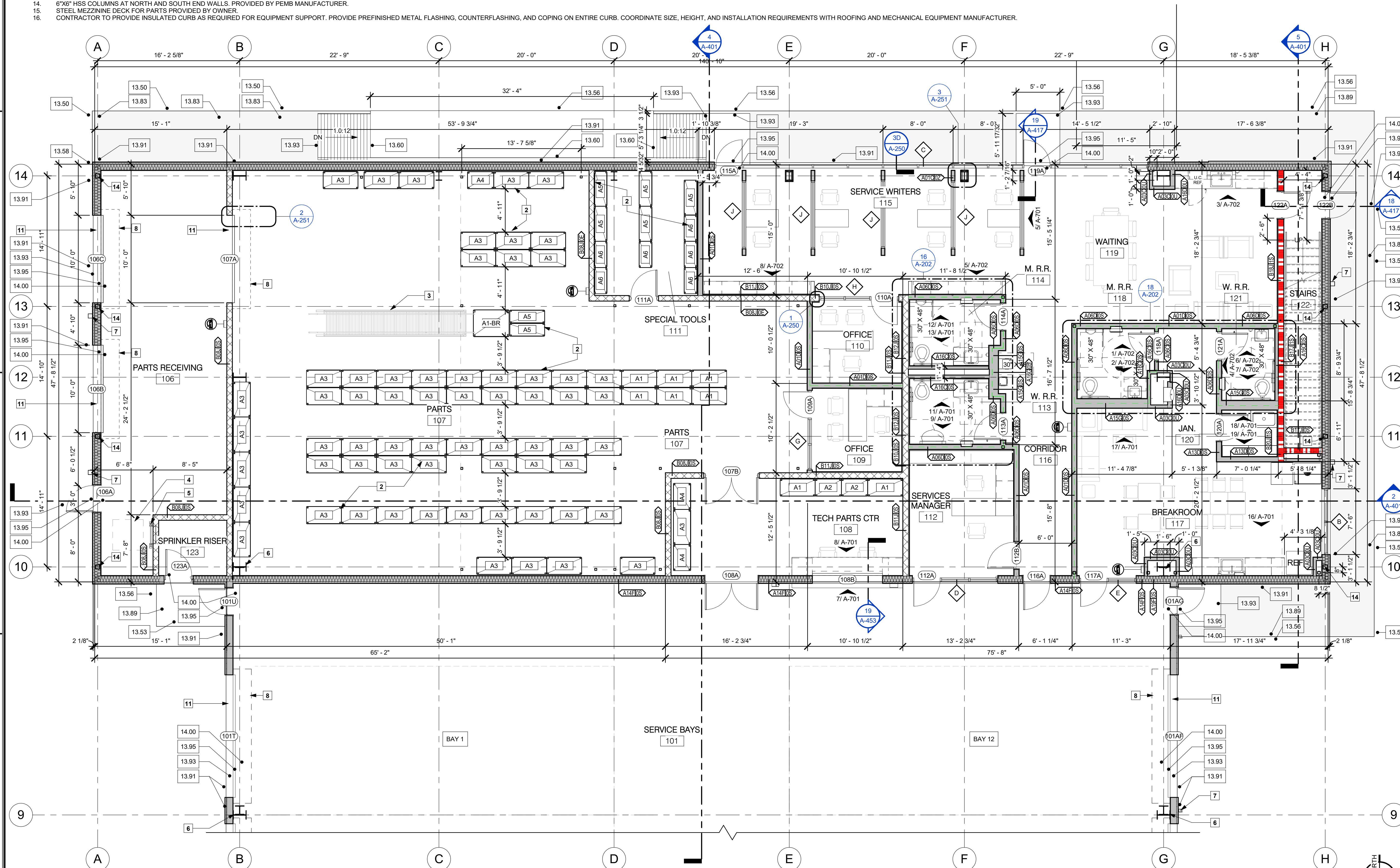
A R C H I T E C T

**KEYNOTES TO SHEET**

- INDICATES APPROXIMATE LOCATION OF OWNER-FURNISHED EQUIPMENT. CONTRACTOR SHALL COORDINATE FINAL LOCATIONS WITH EQUIPMENT SUPPLIER. CONTRACTOR AND SUBCONTRACTORS SHALL PROVIDE POWER TO EQUIPMENT AND COORDINATE ALL REQUIRED CONNECTIONS WITH OWNER'S SUPPLIER.
- INDICATES OWNER-FURNISHED STORAGE SHELVING UNITS. CONTRACTOR SHALL COORDINATE INSTALLATION WITH SHELVING SUPPLIER. LIGHTING IN THESE AREAS SHALL BE COORDINATED BETWEEN THE SHELVING SUPPLIER, CONTRACTOR, AND ELECTRICAL CONTRACTOR. SHELVING SUPPLIER SHALL IDENTIFY LOCATIONS REQUIRING LIGHTING BENEATH GRADED METAL DECKING ABOVE FOR CONTRACTOR INSTALLATION.
- INDICATES PAINTED STEEL STAIRS FURNISHED BY SHELVING SUPPLIER. COORDINATE FINAL LOCATIONS AND INSTALLATION WITH SHELVING SUPPLIER.
- DASHED LINE INDICATES APPROXIMATE LOCATION OF ROOF SCUTTLE TO ROOFING ABOVE. COORDINATE EXACT SIZE AND LOCATION OF ROOF PENETRATION WITH APPROVED ROOF SCUTTLE MANUFACTURER.
- INDICATES WALL-MOUNTED LADDER TO ROOF SCUTTLE ABOVE. CONTRACTOR SHALL COORDINATE EXACT LADDER LOCATION WITH ROOF SCUTTLE MANUFACTURER AND SUPPLIER.
- INDICATES PROBABLE WIND BRACING FOR STEEL STRUCTURE. BUILDING SUPPLIER SHALL VERIFY IF WIND BENT FRAMING IS REQUIRED AND COORDINATE SIZES AND LOCATIONS WITH ARCHITECT AND STRUCTURAL ENGINEER TO MAINTAIN REQUIRED CLEARANCES. STEEL SHOP DRAWINGS AND BUILDING SUPPLIER DESIGN SHALL BE SUBMITTED AND APPROVED PRIOR TO FORMING AND POURING BUILDING SLAB.
- INDICATES APPROXIMATE LOCATION OF BUILDING DOWNSPOUT FURNISHED BY BUILDING MANUFACTURER. PROVIDE CONCRETE SPLASH BLOCK AT ALL DOWNSPOUTS. PROVIDE GUTTERS AND DOWNSPOUTS IN COLORS MATCHING ADJACENT SIDING.
- DASHED LINE INDICATES APPROXIMATE SIZE OF COILING DOOR HOUSING. CONTRACTOR SHALL COORDINATE INSTALLATION OF ALL OVERHEAD ACTING DOORS. AT THESE BAYS, DOOR HOUSINGS SHALL BE COORDINATED WITH BRIDGE CRANE COLUMNS AND BEAMS ABOVE TO AVOID CONFLICTS.
- SEE STRUCTURAL DRAWINGS FOR FRAMING PLANS AND DECKING/HANDRAIL DETAILS ABOVE THIS AREA.
- INDICATES WALL-MOUNTED PAINTED STEEL LADDER TO OPEN DECKING AREA AND DATA ROOM ABOVE OIL/COMPRESSOR ROOM. SEE DETAILS FOR LOCATION AND MOUNTING REQUIREMENTS. PROVIDE MODEL NO. DS-FV16 AS MANUFACTURED BY PLATFORMS AND LADDERS, OR APPROVED EQUAL, IN SELECTED COLOR.
- DASHED LINES INDICATE HOUSINGS FOR OVERHEAD ACTING DOORS. SEE SECTIONS AND DETAILS. CONTRACTOR AND SUPPLIER SHALL COORDINATE REQUIRED CLEARANCE BETWEEN TOP OF DOORS AND BOTTOM WINDOW SILL ABOVE OVERHEAD DOORS.
- INDICATES HANDWASH SINK. SEE MECHANICAL AND PLUMBING DRAWINGS FOR MANUFACTURER AND PLUMBING REQUIREMENTS.
- INDICATES EYEWASH STATION LOCATION. SEE MECHANICAL AND PLUMBING DRAWINGS.
- 6"x6" HSS COLUMNS AT NORTH AND SOUTH END WALLS. PROVIDED BY PEMB MANUFACTURER.
- STEEL MEZZANINE DECK FOR PARTS PROVIDED BY OWNER.
- CONTRACTOR TO PROVIDE INSULATED CURB AS REQUIRED FOR EQUIPMENT SUPPORT. PROVIDE PREFINISHED METAL FLASHING, COUNTERFLASHING, AND COPING ON ENTIRE CURB. COORDINATE SIZE, HEIGHT, AND INSTALLATION REQUIREMENTS WITH ROOFING AND MECHANICAL EQUIPMENT MANUFACTURER.

**FLOOR PLAN LEGEND**

- SOUND ATTENUATION INSULATION AS SPECIFIED
- ▬ 1HR FIRE RATED WALL



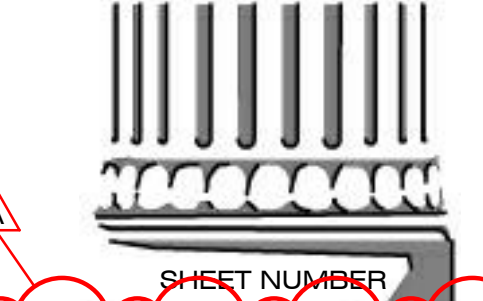
**RMG**  
 RANDY M. GOODLOE, AIA, APAC  
 755 KIRBY STREET  
 LAKE CHARLES, LOUISIANA  
 OFFICE: 337.456.3036  
 FAX: 337.456.3773  
**ARCHITECT**



NEW CONSTRUCTION  
**FORD PRO**  
 FOR  
**MIKE WILLIS**  
 2010 PATTON ST.

© COPYRIGHT 2026.  
 RANDY M. GOODLOE, AIA, APAC  
 ALL INFORMATION, EITHER DRAWN, WRITTEN,  
 OR IMPLIED APPEARING IN THIS DOCUMENT  
 SHALL NOT BE DUPLICATED, DISCLOSED, OR  
 OTHERWISE USED WITHOUT THE WRITTEN  
 PERMISSION OF THE AUTHOR, RANDY M.  
 GOODLOE, AIA, APAC. THIS DOCUMENT IS AN  
 INSTRUMENT OF SERVICE AND IS THE SOLE  
 PROPERTY OF THE AUTHOR. FURTHERMORE,  
 THE USE OF THIS DOCUMENT FOR ANY  
 PURPOSE SHALL BE REVOKED, IF THE INTENT  
 OF THE DESIGN OR THE CONSTRUCTION  
 TECHNIQUES OR DETAILS SHOWN HEREIN  
 ARE NOT ADHERED TO OR THE  
 CONTRACTUAL AGREEMENT GOVERNING  
 THEIR USE ARE NOT STRICTLY ADHERED TO.

PROJECT NO.	25012
PROJECT MANAGER	TM
DATE ISSUED	2026.05.22
REVISED	
A	ADDENDUM 1   2026.06.03



SHEET NUMBER  
**A-103**  
 ENLARGED 1ST FLOOR  
 PLANS

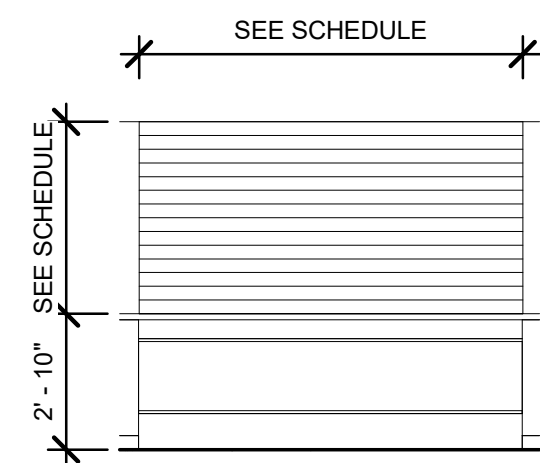
6/3/2026 9:46:47 AM

1 ENLARGED PLAN - PARTS / LOBBY  
 3/16" = 1'-0"

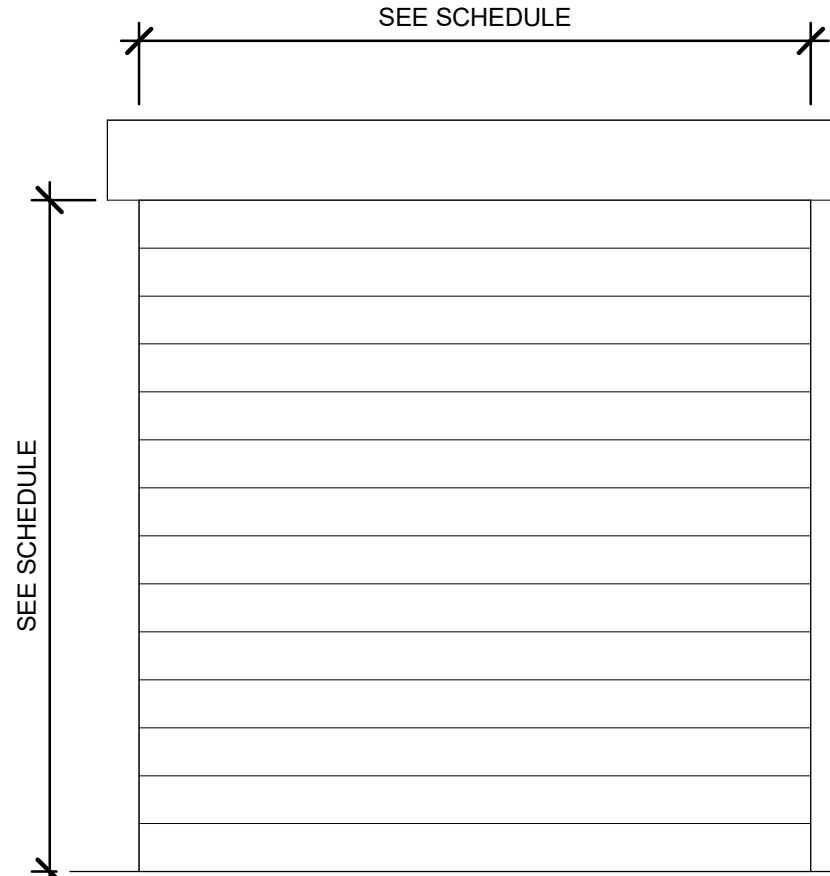
ROOM FINISH SCHEDULE										
ROOM NUMBER	ROOM NAME	FLOOR	BASE	WALLS				CEILING FINISH	NOTES	
				N	S	E	W			
101	SERVICE BAYS	F-3	-	PT-3 / PT-2	PT-3 / PT-2	PT-3 / PT-2	PT-3 / PT-2	-	1,3	
102	M. R.R.	F-3	-	WC-1	WC-1	WC-1	WC-1	C-1	2	
103	W. R.R.	F-3	-	WC-1	WC-1	WC-1	WC-1	C-1	2	
104	BARREL STORAGE	F-3	-	PT-3 / PT-2	PT-3 / PT-2	PT-3 / PT-2	PT-3 / PT-2	-	1	
105	OIL/COMPRESSOR	F-3	-	PT-3 / PT-2	PT-3 / PT-2	PT-3 / PT-2	PT-3 / PT-2	-	1	
106	PARTS RECEIVING	F-3	-	PT-3 / PT-2	PT-3 / PT-2	PT-3 / PT-2	PT-3 / PT-2	-	1	
107	PARTS	F-3	-	PT-3 / PT-2	PT-3 / PT-2	PT-3 / PT-2	PT-3 / PT-2	-	1	
108	TECH PARTS CTR	F-3	-	PT-3 / PT-2	PT-3 / PT-2	PT-3 / PT-2	PT-3 / PT-2	C-1	1	
109	OFFICE	F-3	B-1	PT-2	PT-2	PT-2	PT-2	C-1		
110	OFFICE	F-3	B-1	PT-2	PT-2	PT-2	PT-2	C-1		
111	SPECIAL TOOLS	F-3	-	PT-3 / PT-2	PT-3 / PT-2	PT-3 / PT-2	PT-3 / PT-2	-	1	
112	SERVICES MANAGER	F-3	B-1	PT-2	PT-2	PT-2	PT-2	C-1		
113	W. R.R.	F-4	-	WC-2 / PT-2	WC-2 / PT-2	WC-2 / PT-2	WC-2 / PT-2	C-1	2	
114	M. R.R.	F-4	-	WC-2 / PT-2	WC-2 / PT-2	WC-2 / PT-2	WC-2 / PT-2	C-1	2	
115	SERVICE WRITERS	F-1 / F-3	B-1	PT-2	PT-2	PT-2	PT-2	C-2	4	
116	CORRIDOR	F-3	B-1	PT-2	PT-2	PT-2	PT-2	C-1		
117	BREAKROOM	F-3	B-1	PT-2	PT-2	PT-2	PT-2	C-2, C-4		
118	M. R.R.	F-4	-	WC-2 / PT-2	WC-2 / PT-2	WC-2 / PT-2	WC-2 / PT-2	C-1	2	
119	WAITING	F-3	B-1	PT-2	PT-2	PT-2	PT-2	C-2		
120	JAN.	F-3	-	WC-1	WC-1	WC-1	WC-1	-		
121	W. R.R.	F-4	-	WC-2 / PT-2	WC-2 / PT-2	WC-2 / PT-2	WC-2 / PT-2	C-1	2	
122	STAIRS	F-3	B-1	PT-2	PT-2	PT-2	PT-2	C-1		
123	SPRINKLER RISER	F-3	-	PT-2	PT-2	PT-2	PT-2	-		
201	DATA	F-3	B-1	PT-2	PT-2	PT-2	PT-2	-		
202	PARTS STORAGE	F-3	-	PT-3 / PT-2	PT-3 / PT-2	PT-3 / PT-2	PT-3 / PT-2	-	1	
203	PARTS	F-3	B-1	PT-2	PT-2	PT-2	PT-2	C-1		
204	HVAC	-	-	PT-2	PT-2	PT-2	PT-2	-		
205	CONFERENCE	F-3	B-1	PT-1	PT-2	PT-2	PT-2	C-1		
206	CL.	F-3	-	PT-2	PT-2	PT-2	PT-2	C-1		
207	R.R.	F-4	-	WC-2 / PT-2	WC-2 / PT-2	WC-2 / PT-2	WC-2 / PT-2	C-1	2	
208	EQUIPMENT CL.	F-3	B-1	PT-2	PT-2	PT-2	PT-1	C-1		

- ROOM FINISH SCHEDULE NOTES:
- PT-3 PAINT TO 6'-0" ABOVE FINISHED FLOOR REMAINING WALL TO BE PAINTED IN PT-2.
  - WC-2 TO BE APPLIED UP TO CEILING REMAINING WALL TO BE PAINTED IN PT-2.
  - EXTERIOR OF ROOM 201 TO BE OF GYPSUM BOARD CONSTRUCTION PAINTED IN PT-2.
  - F-1 TO BE APPLIED BETWEEN GLASS PARTITIONS REMAINING FLOOR TO BE F-3.

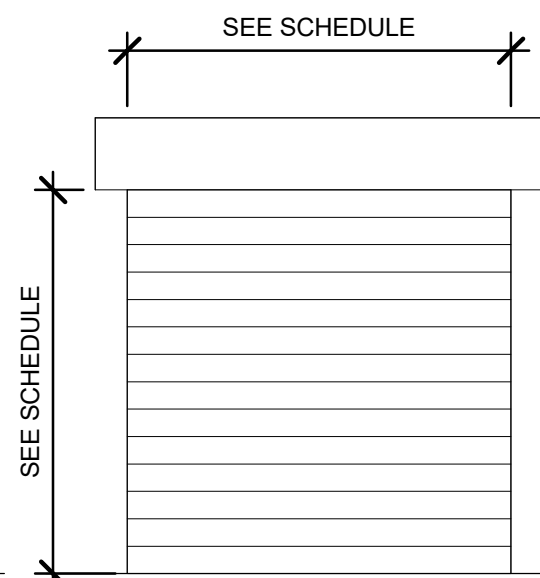
ROOM FINISH LEGEND	
FLOORING	DESCRIPTION
F-1	CARPET MFG: SHAW CONTRACT STYLE: COLOR FRAME TILE 5T081 SIZE: 24" X 24" TILE INSTALL: 1/4 TURN COLOR: MYSTIC GREY 81515
F-2	CARPET MFG: INTERFACE STYLE: HARMONIZE SIZE: 9.845" X 39.38" (25CM X 1M) TILE COLOR: 104044 PEWTER
F-3	CONCRETE FLOOR STYLE: POURED IN PLACE STEEL TROWEL FINISH SEALER TO PROTECT FROM GREASE COLOR: SHERWIN WILLIAMS ARMORSEAL REXTHANE I CLEAR, GLOSS NOTE: CONTROL JOINTS 20'-0" O.C. AS REQUIRED
F-4	TILE MFG: VIRGINIA TILE SPEC: VTIL COLLECTION COLOR: WATSON SILVER VTL WT SI GROUT: TEC DOVE GRAY 908
F-5	TILE MFG: VIRGINIA TILE SPEC: CERAMIC/MATTE FINISH/ RECTIFIED SIZE: 12"x24" CUSTOM BUILDING PRODUCTS # COLOR: CAESAR TILES/CLASH SPIRIT CAEESP1224R MATT
BASE	DESCRIPTION
B-1	MFG: JOHNSONITE SPEC: RUBBER WALL BASE COLOR: 6" TRADITIONAL DURACOVE 50 WHITE W
CEILING	DESCRIPTION
C-1	1 HOUR FIRE RATED ASSEMBLY - 3 LAYERS OF 5/8" GYPSUM BOARD CEILING; TAPE, FLOAT, FIRE CAULKING, PRIME & PAINT AS SPECIFIED IN COLOR AS SELECTED.
C-2	2'X2' SUSPENDED ACOUSTICAL CEILING SYSTEM, AS SPECIFIED
C-3	SOUND BAFFLES AS SPECIFIED IN COLOR AS SELECTED BY OWNER
C-4	5/8" GYPSUM BOARD CEILING; TAPE, FLOAT, PRIME & PAINT AS SPECIFIED IN COLOR AS SELECTED.
WALL	DESCRIPTION
WC-1	FRP
WC-2	TILE MFG: VIRGINIA TILE SPEC: VTIL COLLECTION COLOR: WATSON SILVER VTL WT SI GROUT: TEC DOVE GRAY 908
PAINT	DESCRIPTION
PT-1	MFG: SHERWIN WILLIAMS PRODUCT: SW PROMAR 200 ZERO V.O.C. INTERIOR LATEX EG SHELL, B20 SERIES COLOR: CUSTOM SW COLOR FMC001 FORD BLUE 2022
PT-2	MFG: SHERWIN WILLIAMS PRODUCT: SW PROMAR 200 ZERO V.O.C. INTERIOR LATEX EG SHELL, B20 SERIES COLOR: MINDFUL GREY SW 7016
PT-3	MFG: SHERWIN WILLIAMS PRODUCT: SW PROMAR 200 ZERO V.O.C. INTERIOR LATEX EG SHELL, B20 SERIES COLOR: GAUNTLET GREY SW 7019
MILLWORK	DESCRIPTION
LAM-1	MFG: WILSONART SPEC: WOOD LAMINATE FINISH: SOFTGRAIN COLOR: LANDMARK WOOD 7981K-12
LAM-2	MFG: FORMICA SPEC: WOOD LAMINATE FINISH: NATURAL GRAIN COLOR: CASCARA TEAKWOOD 8909-NG
COUNTERTOP	DESCRIPTION
SS-1	MFG: CORIAN STYLE: QUARTZ COLOR: CONCRETE CARRARA
SS-2	MFG: CORIAN STYLE: SOLID SURFACE COLOR: CARBON AGGREGATE



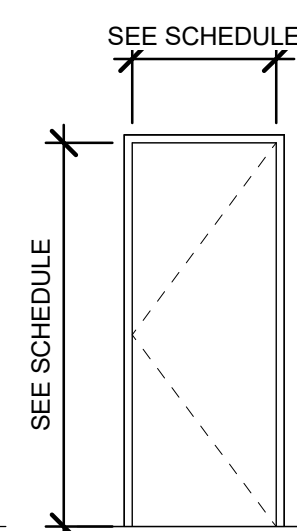
TYPE H



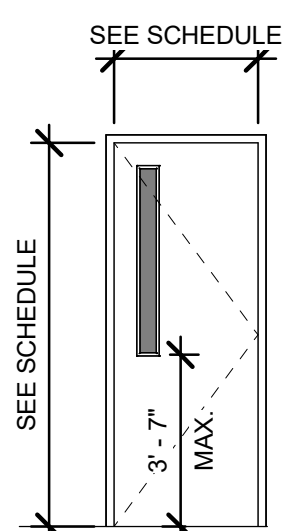
TYPE A



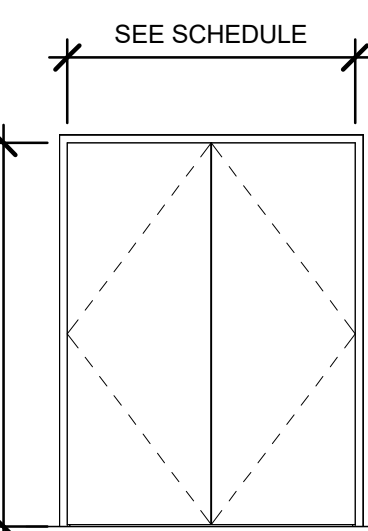
TYPE B



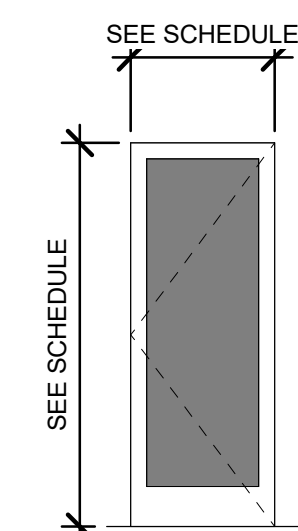
TYPE C



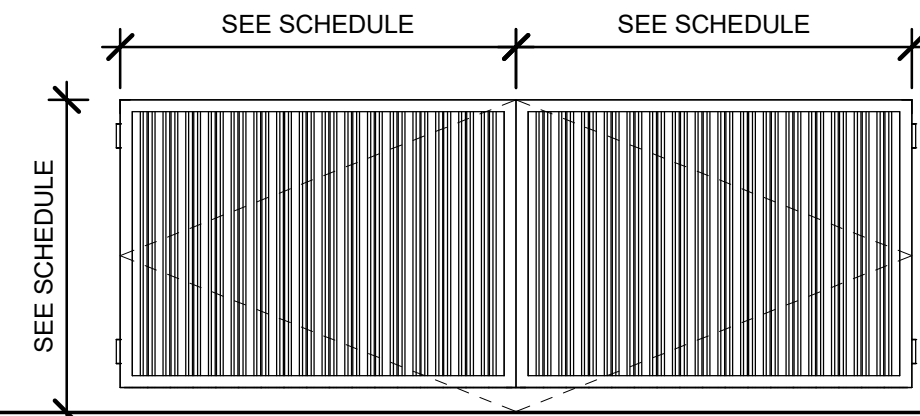
TYPE D



TYPE E



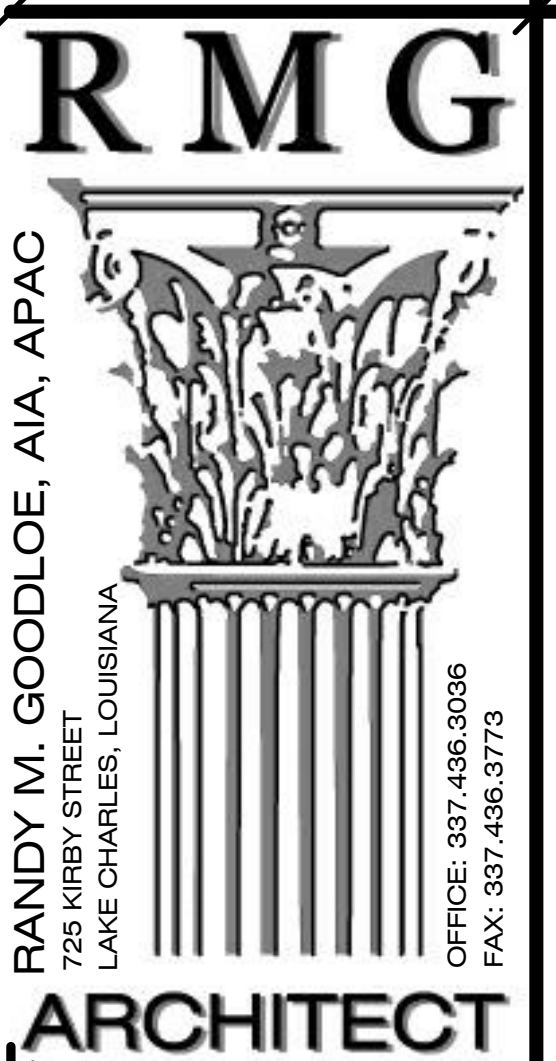
TYPE F



TYPE G

DOOR SCHEDULE (COMMERCIAL)												
MARK	OPENING SIZE		FUNCTION	DOOR TYPES	DOOR		FRAME		GLASS TYPE	FIRE RATING	COMMENTS	
	WIDTH	HEIGHT			MATERIAL	FINISH	MATERIAL	FINISH				
101A	3'-0"	8'-0"	EXTERIOR	C	H.M.	PAINTED	H.M.	PAINTED	-	-	PANIC HARDWARE	
101AA	14'-0"	14'-0"	EXTERIOR	A	AS SPECIFIED	AS SPECIFIED	AS SPECIFIED	AS SPECIFIED	-	-		
101AB	14'-0"	14'-0"	EXTERIOR	A	AS SPECIFIED	AS SPECIFIED	AS SPECIFIED	AS SPECIFIED	-	-		
101AC	14'-0"	14'-0"	EXTERIOR	A	AS SPECIFIED	AS SPECIFIED	AS SPECIFIED	AS SPECIFIED	-	-		
101AD	14'-0"	14'-0"	EXTERIOR	A	AS SPECIFIED	AS SPECIFIED	AS SPECIFIED	AS SPECIFIED	-	-		
101AE	14'-0"	14'-0"	EXTERIOR	A	AS SPECIFIED	AS SPECIFIED	AS SPECIFIED	AS SPECIFIED	-	-		
101AF	14'-0"	14'-0"	EXTERIOR	A	AS SPECIFIED	AS SPECIFIED	AS SPECIFIED	AS SPECIFIED	-	-		
101AG	3'-0"	8'-0"	EXTERIOR	C	H.M.	PAINTED	H.M.	PAINTED	-	-	PANIC HARDWARE	
101B	14'-0"	14'-0"	EXTERIOR	A	AS SPECIFIED	AS SPECIFIED	AS SPECIFIED	AS SPECIFIED	-	-		
101C	14'-0"	14'-0"	EXTERIOR	A	AS SPECIFIED	AS SPECIFIED	AS SPECIFIED	AS SPECIFIED	-	-		
101D	11'-0"	14'-0 1/2"	EXTERIOR	A	AS SPECIFIED	AS SPECIFIED	AS SPECIFIED	AS SPECIFIED	-	-		
101E	14'-0"	14'-0"	EXTERIOR	A	AS SPECIFIED	AS SPECIFIED	AS SPECIFIED	AS SPECIFIED	-	-		
101G	14'-0"	14'-0"	EXTERIOR	A	AS SPECIFIED	AS SPECIFIED	AS SPECIFIED	AS SPECIFIED	-	-		
101H	3'-0"	8'-0"	EXTERIOR	C	H.M.	PAINTED	H.M.	PAINTED	-	-	PANIC HARDWARE	
101J	14'-0"	14'-0"	EXTERIOR	A	AS SPECIFIED	AS SPECIFIED	AS SPECIFIED	AS SPECIFIED	-	-		
101K	14'-0"	14'-0"	EXTERIOR	A	AS SPECIFIED	AS SPECIFIED	AS SPECIFIED	AS SPECIFIED	-	-		
101L	14'-0"	14'-0"	EXTERIOR	A	AS SPECIFIED	AS SPECIFIED	AS SPECIFIED	AS SPECIFIED	-	-		
101M	14'-0"	14'-0"	EXTERIOR	A	AS SPECIFIED	AS SPECIFIED	AS SPECIFIED	AS SPECIFIED	-	-		
101N	14'-0"	14'-0"	EXTERIOR	A	AS SPECIFIED	AS SPECIFIED	AS SPECIFIED	AS SPECIFIED	-	-		
101O	14'-0"	14'-0"	EXTERIOR	A	AS SPECIFIED	AS SPECIFIED	AS SPECIFIED	AS SPECIFIED	-	-		
101P	14'-0"	14'-0"	EXTERIOR	A	AS SPECIFIED	AS SPECIFIED	AS SPECIFIED	AS SPECIFIED	-	-		
101Q	14'-0"	14'-0"	EXTERIOR	A	AS SPECIFIED	AS SPECIFIED	AS SPECIFIED	AS SPECIFIED	-	-		
101R	14'-0"	14'-0"	EXTERIOR	A	AS SPECIFIED	AS SPECIFIED	AS SPECIFIED	AS SPECIFIED	-	-		
101S	14'-0"	14'-0"	EXTERIOR	A	AS SPECIFIED	AS SPECIFIED	AS SPECIFIED	AS SPECIFIED	-	-		
101T	14'-0"	14'-0"	EXTERIOR	A	AS SPECIFIED	AS SPECIFIED	AS SPECIFIED	AS SPECIFIED	-	-		
101U	3'-0"	8'-0"	EXTERIOR	C	H.M.	PAINTED	H.M.	PAINTED	-	-	PANIC HARDWARE	
101W	14'-0"	14'-0"	EXTERIOR	A	AS SPECIFIED	AS SPECIFIED	AS SPECIFIED	AS SPECIFIED	-	-		
101X	14'-0"	14'-0"	EXTERIOR	A	AS SPECIFIED	AS SPECIFIED	AS SPECIFIED	AS SPECIFIED	-	-		
101Y	14'-0"	14'-0"	EXTERIOR	A	AS SPECIFIED	AS SPECIFIED	AS SPECIFIED	AS SPECIFIED	-	-		
101Z	14'-0"	14'-0"	EXTERIOR	A	AS SPECIFIED	AS SPECIFIED	AS SPECIFIED	AS SPECIFIED	-	-		
102A	3'-0"	8'-0"	EXTERIOR	C	H.M.	PAINTED	H.M.	PAINTED	-	-		
102B	3'-0"	8'-0"	EXTERIOR	C	H.M.	PAINTED	H.M.	PAINTED	-	-		
103A	3'-0"	8'-0"	EXTERIOR	C	H.M.	PAINTED	H.M.	PAINTED	-	-		
104A	8'-0"	8'-0"	EXTERIOR	A	STEEL COIL DOOR	FACTORY	STEEL	PAINTED	-	-		
105A	8'-0"	8'-0"	EXTERIOR	E	H.M.	PAINTED	H.M.	PAINTED	-	-		
106A	3'-0"	8'-0"	EXTERIOR	D	H.M.	PAINTED	H.M.	PAINTED	AS SPECIFIED	-		
106B	10'-0"	9'-0"	EXTERIOR	B	STEEL COIL DOOR	FACTORY	STEEL	PAINTED	-	-	INSULATED	
106C	10'-0"	9'-0"	EXTERIOR	B	STEEL COIL DOOR	FACTORY	STEEL	PAINTED	-	-	INSULATED	
107A	10'-0"	9'-0"	EXTERIOR	B	H.M.	PAINTED	H.M.	PAINTED	-	-		
107B	6'-0"	8'-0"	EXTERIOR	E	H.M.	PAINTED	H.M.	PAINTED	-	-	PANIC HARDWARE	
108A	6'-0"	8'-0"	EXTERIOR	E	H.M.	PAINTED	H.M.	PAINTED	-	-	PANIC HARDWARE	
108B	8'-0"	4'-0"	EXTERIOR	H	STEEL COIL DOOR	AS SPECIFIED	STEEL	PAINTED	-	-	COUNTER COIL DOOR	
109A	3'-0"	8'-0"	EXTERIOR	F	ALUM.	CLEAR ANODIZED	ALUM.	CLEAR ANODIZED	AS SPECIFIED	-		
110A	3'-0"	8'-0"	EXTERIOR	F	ALUM.	CLEAR ANODIZED	ALUM.	CLEAR ANODIZED	AS SPECIFIED	-		
111A	3'-0"	7'-0"	EXTERIOR	C	H.M.	PAINTED	H.M.	PAINTED	-	-		
112A	3'-0"	8'-0"	EXTERIOR	F	ALUM.	CLEAR ANODIZED	ALUM.	CLEAR ANODIZED	AS SPECIFIED	-		
112B	3'-0"	8'-0"	EXTERIOR	C	H.M.	PAINTED	H.M.	PAINTED	-	-		
113A	3'-0"	8'-0"	EXTERIOR	C	H.M.	PAINTED	H.M.	PAINTED	-	-		
114A	3'-0"	8'-0"	EXTERIOR	C	H.M.	PAINTED	H.M.	PAINTED	-	-		
115A	3'-0"	8'-0"	EXTERIOR	F	ALUM.	CLEAR ANODIZED	ALUM.	CLEAR ANODIZED	AS SPECIFIED	-		
116A	3'-0"	8'-0"	EXTERIOR	C	H.M.	PAINTED	H.M.	PAINTED	AS SPECIFIED	-	PANIC HARDWARE	
117A	3'-0"	8'-0"	EXTERIOR	F	ALUM.	CLEAR ANODIZED	ALUM.	CLEAR ANODIZED	AS SPECIFIED	-	PANIC HARDWARE	
118A	3'-0"	8'-0"	EXTERIOR	C	H.M.	PAINTED	H.M.	PAINTED	-	-		
119A	3'-0"	8'-0"	EXTERIOR	F	ALUM.	CLEAR ANODIZED	ALUM.	CLEAR ANODIZED	AS SPECIFIED	-	PANIC HARDWARE	
120A	3'-0"	8'-0"	EXTERIOR	C	H.M.	PAINTED	H.M.	PAINTED	-	-		
121A	3'-0"	8'-0"	EXTERIOR	C	H.M.	PAINTED	H.M.	PAINTED	-	-		
122A	3'-0"	8'-0"	EXTERIOR	C	H.M.	PAINTED	H.M.	PAINTED	-	-	1HR PANIC HARDWARE	
122B	3'-0"	8'-0"	EXTERIOR	C	H.M.	PAINTED	H.M.	PAINTED	-	-	1HR PANIC HARDWARE	
122C	3'-0"	8'-0"	EXTERIOR	C	H.M.	PAINTED	H.M.	PAINTED	-	-		
123A	3'-0"	8'-0"	EXTERIOR	C	H.M.	PAINTED	H.M.	PAINTED	-	-		
201A	3'-0"	7'-0"	EXTERIOR	C	H.M.	PAINTED	H.M.	PAINTED	-	-		
203A	3'-0"	8'-0"	EXTERIOR	C	H.M.	PAINTED	H.M.	PAINTED	-	-		
203B	6'-0"	7'-0"	EXTERIOR	D	H.M.	PAINTED	H.M.	PAINTED	-	-		
204A	3'-0"	8'-0"	EXTERIOR	C	H.M.	PAINTED	H.M.	PAINTED	-	-		
205A	3'-0"	8'-0"	EXTERIOR	C	H.M.	PAINTED	H.M.	PAINTED	-	-	PANIC HARDWARE	
208A	3'-0"	8'-0"	EXTERIOR	C	H.M.	PAINTED	H.M.	PAINTED	-	-		
209A	3'-0"	8'-0"	EXTERIOR	C	H.M.	PAINTED	H.M.	PAINTED	-	-		
211A	3'-0"	8'-0"	EXTERIOR	C	H.M.	PAINTED	H.M.	PAINTED	-	-		
G-1	8'-3"	6'-6"	-	G	STEEL	PAINTED	GALV. STEEL	PAINTED	-	-	DUMPSTER ENCLOSURE GATE	
G-2	8'-3"	6'-6"	-	G	STEEL	PAINTED	GALV. STEEL	PAINTED	-	-	DUMPSTER ENCLOSURE GATE	

6/3/2026 9:46:48 AM

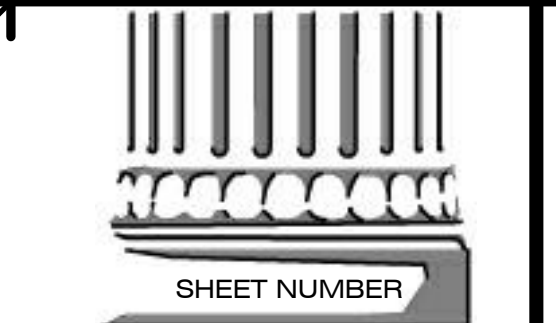


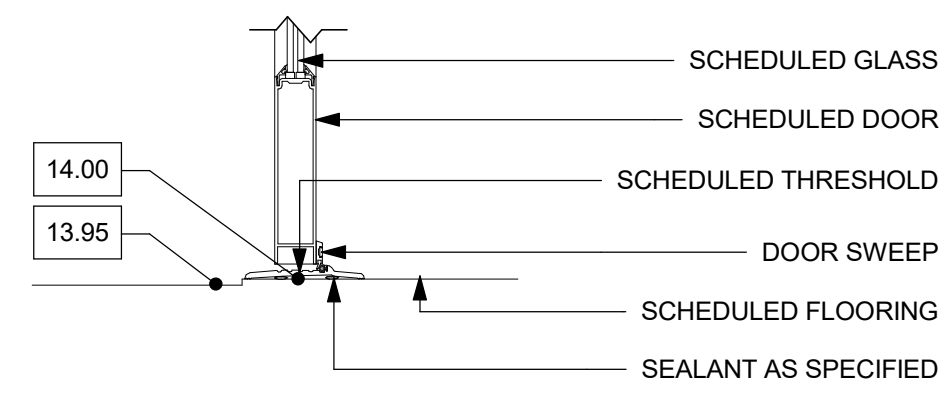
LA. LICENSE NO. 4086

NEW CONSTRUCTION  
**FORD PRO**  
 FOR  
**MIKE WILLIS**  
 2010 PATTON ST.

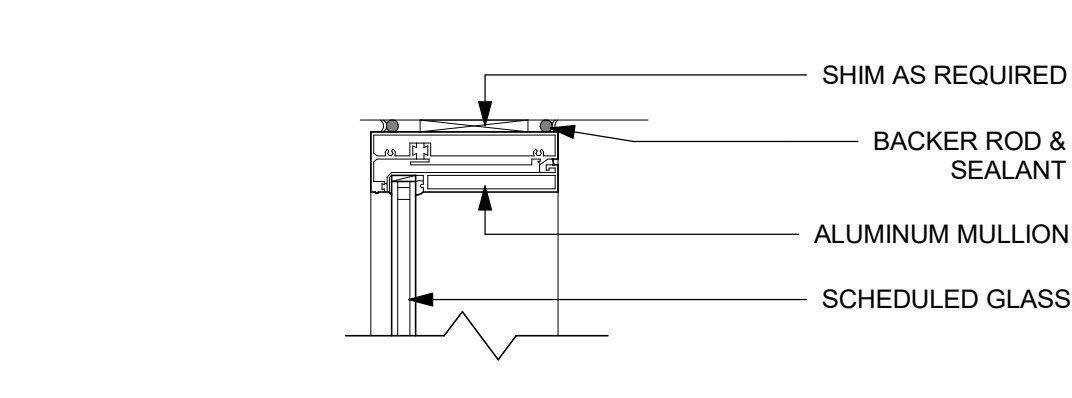
© COPYRIGHT 2026, RANDY M. GOODLOE, A.I.A. APAC. ALL INFORMATION, EITHER DRAWN, WRITTEN, OR MARKED APPEARING IN THIS DOCUMENT SHALL NOT BE DUPLICATED, DISCLOSED, OR OTHERWISE USED WITHOUT THE WRITTEN PERMISSION OF THE AUTHOR, RANDY M. GOODLOE, A.I.A. APAC. THIS DOCUMENT IS AN INSTRUMENT OF SERVICE AND IS THE SOLE PROPERTY OF THE AUTHOR. FURTHERMORE, THE USE OF THIS DOCUMENT FOR ANY PURPOSE SHALL BE REVOKED, IF THE INTENT OF THE DESIGN OR THE CONSTRUCTION TECHNIQUES OR DETAILS SHOWN HEREIN ARE NOT ADHERED TO OR THE CONTRACTUAL AGREEMENT GOVERNING THEIR USE ARE NOT STRICTLY ADHERED TO.

PROJECT NO.	25012
PROJECT MANAGER	TM
DATE ISSUED	2026.05.22
REVISED	
A	ADDENDUM 1 2026.06.03

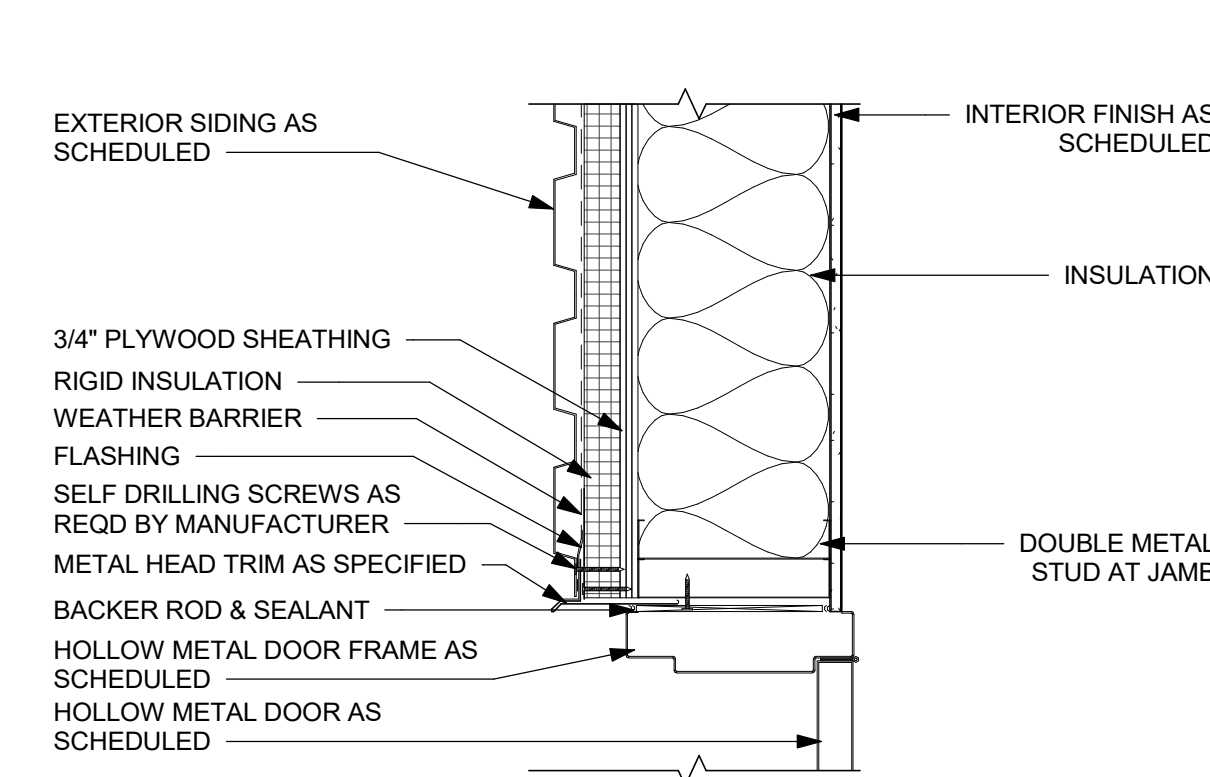




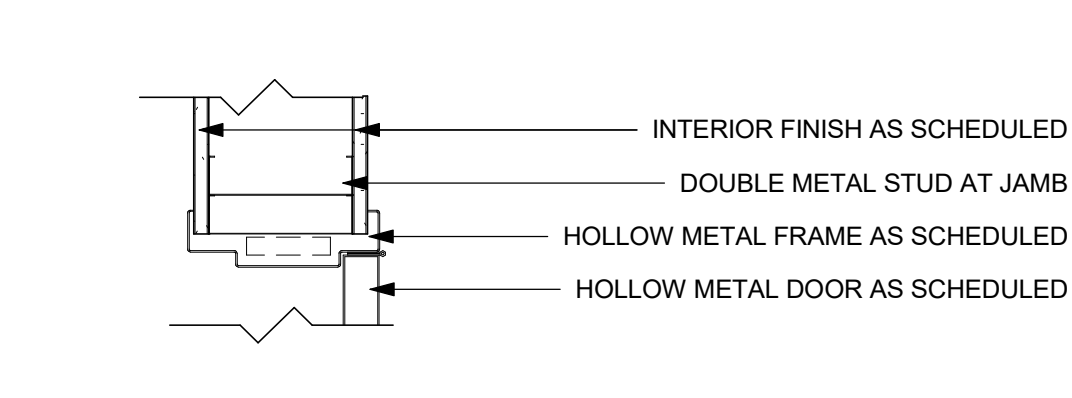
1A STOREFRONT DOOR THRESHOLD DETAIL (EXTERIOR) TYP.  
1 1/2" = 1'-0"



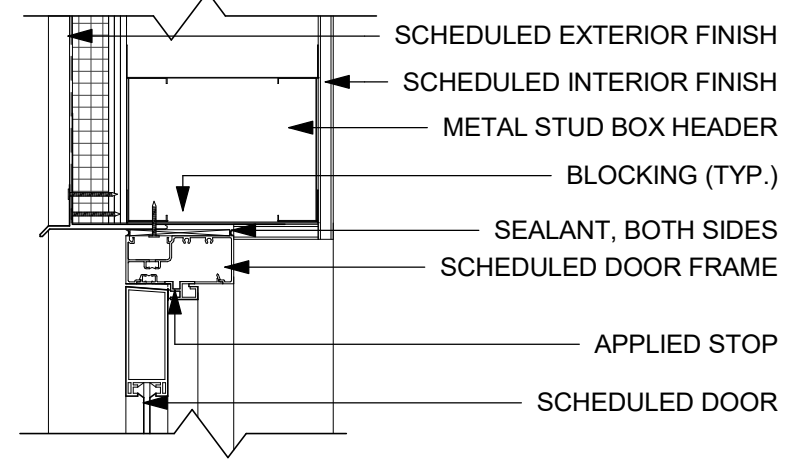
3A STOREFRONT MULLION HEAD DETAIL (EXTERIOR) TYP.  
1 1/2" = 1'-0"



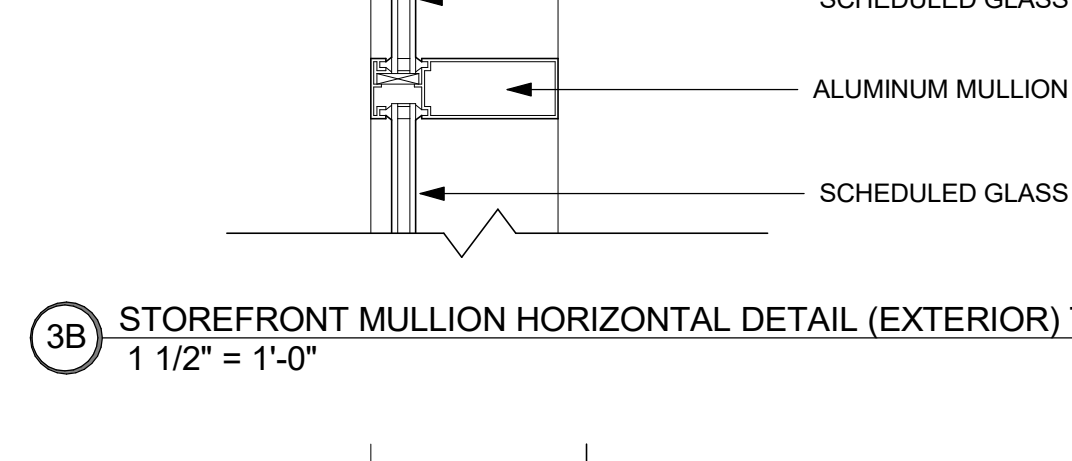
5A HOLLOW METAL DOOR HEAD DETAIL (EXTERIOR) TYP.  
1 1/2" = 1'-0"



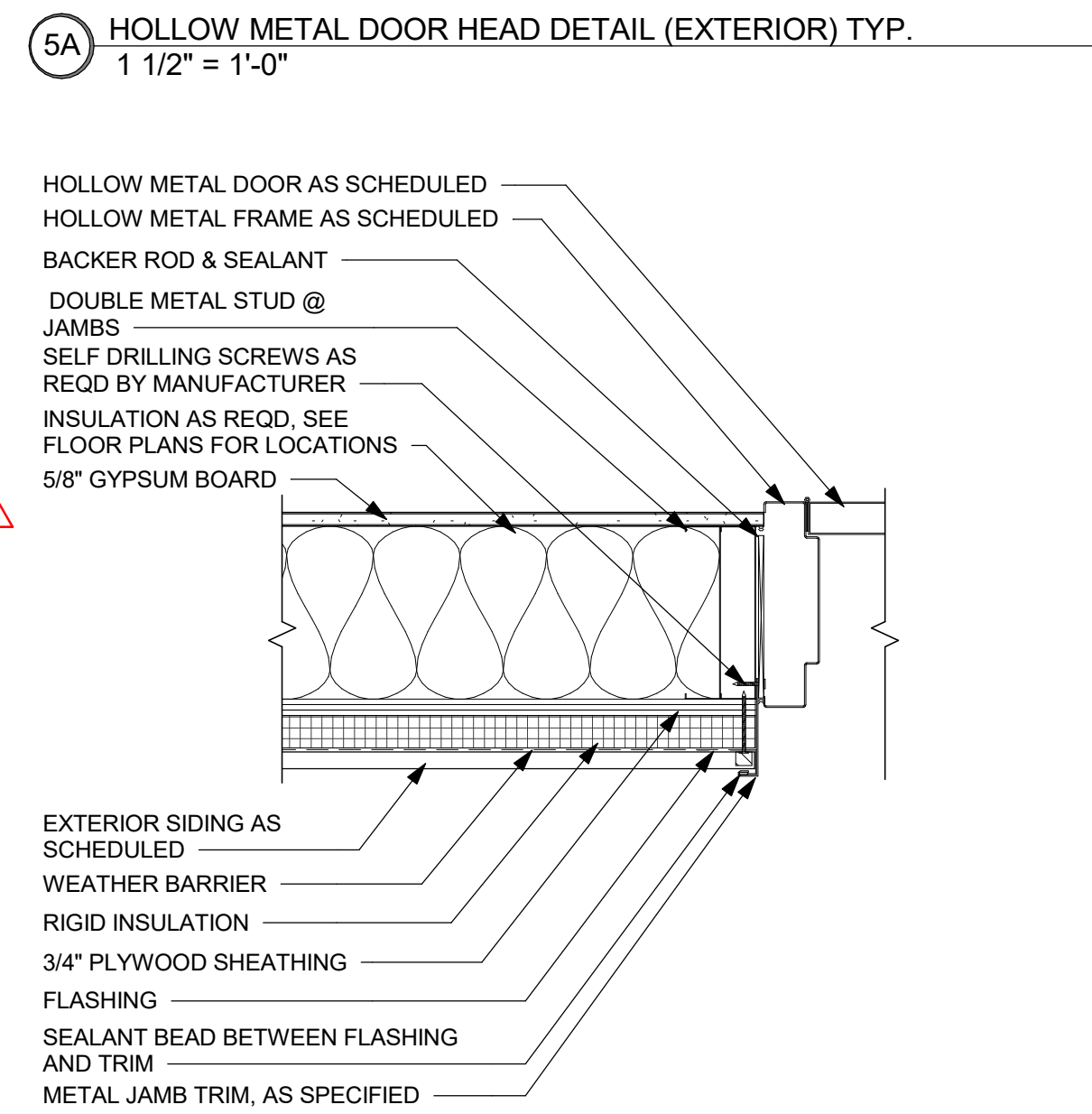
6A HOLLOW METAL DOOR HEAD DETAIL (INTERIOR) TYP.  
1 1/2" = 1'-0"



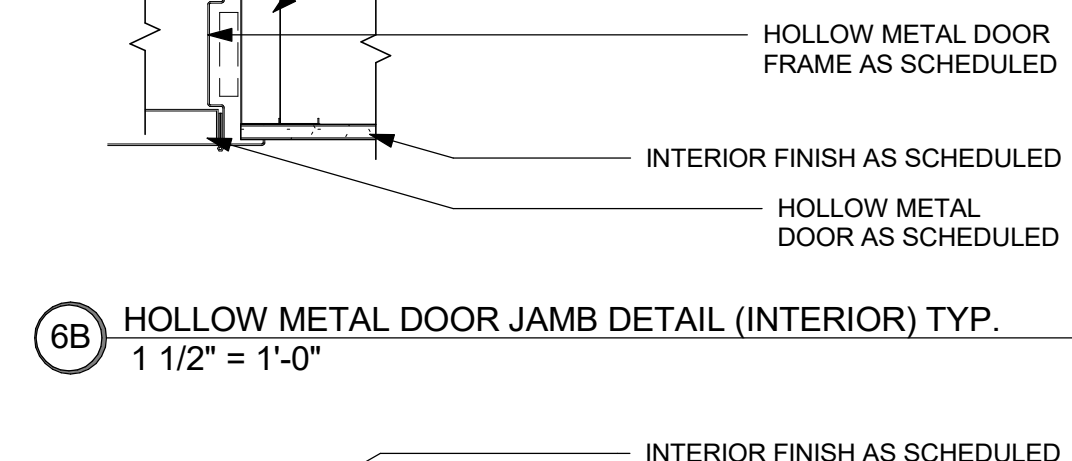
1B STOREFRONT DOOR HEAD DETAIL (EXTERIOR) TYP.  
1 1/2" = 1'-0"



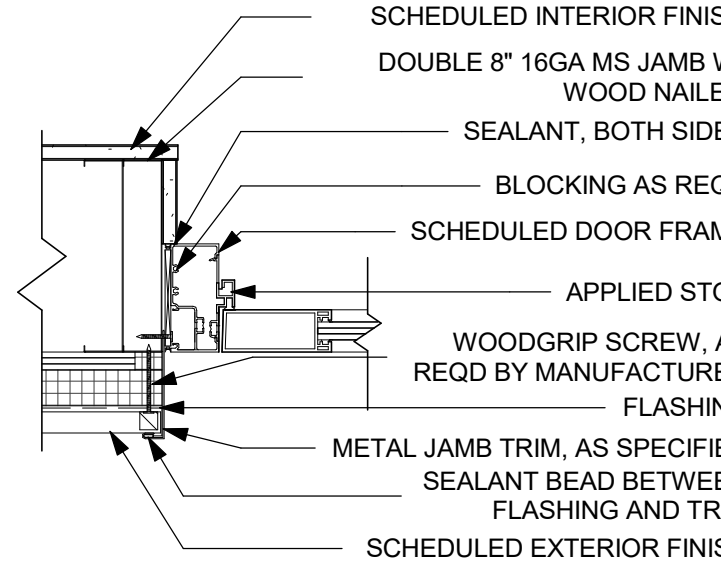
3B STOREFRONT MULLION HORIZONTAL DETAIL (EXTERIOR) TYP.  
1 1/2" = 1'-0"



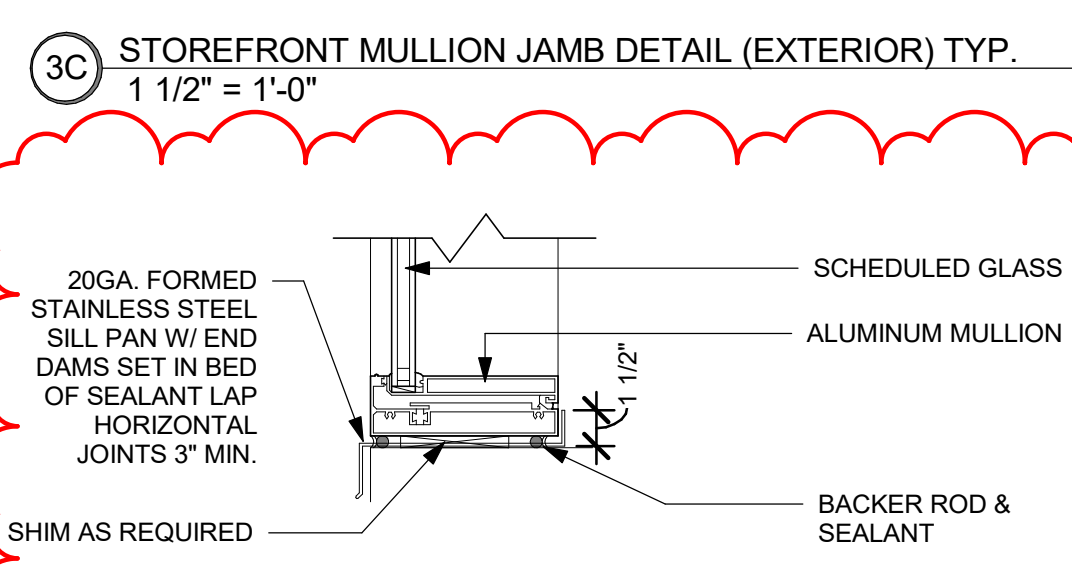
5B HOLLOW METAL DOOR JAMB DETAIL (EXTERIOR) TYP.  
1 1/2" = 1'-0"



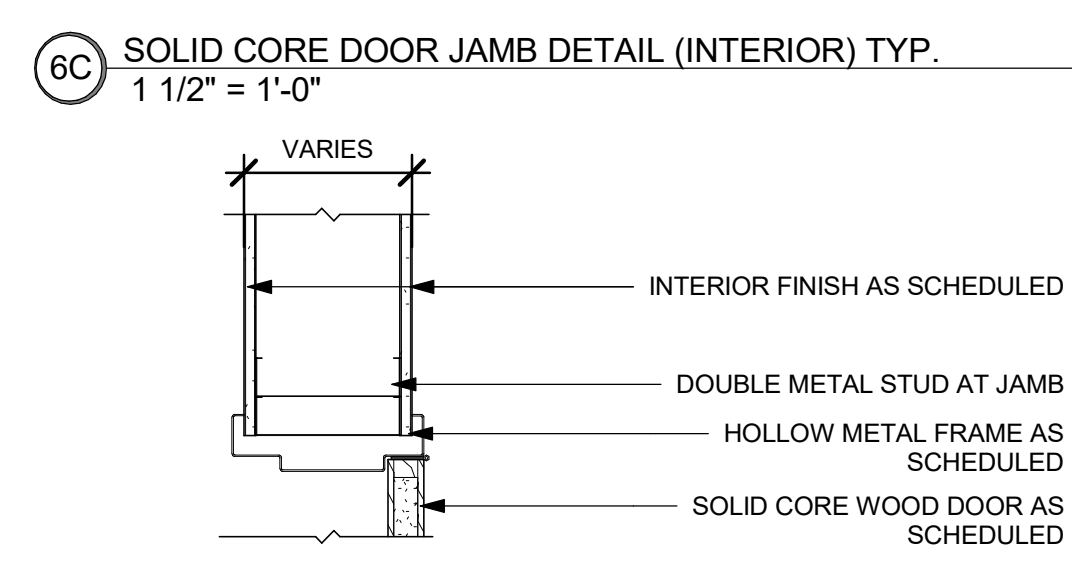
6B HOLLOW METAL DOOR JAMB DETAIL (INTERIOR) TYP.  
1 1/2" = 1'-0"



1C STOREFRONT DOOR JAMB DETAIL (EXTERIOR) TYP.  
1 1/2" = 1'-0"



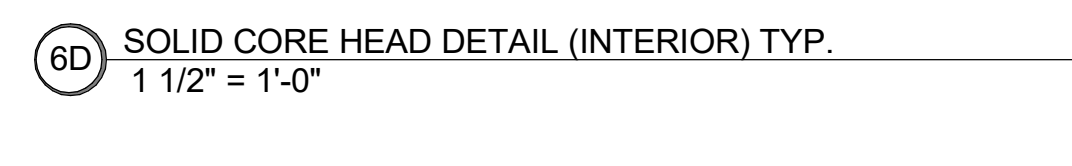
3C STOREFRONT MULLION JAMB DETAIL (EXTERIOR) TYP.  
1 1/2" = 1'-0"



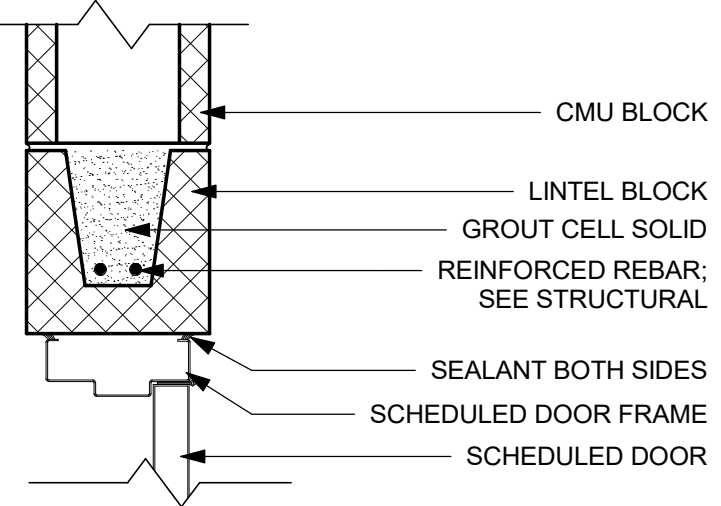
6C SOLID CORE DOOR JAMB DETAIL (INTERIOR) TYP.  
1 1/2" = 1'-0"



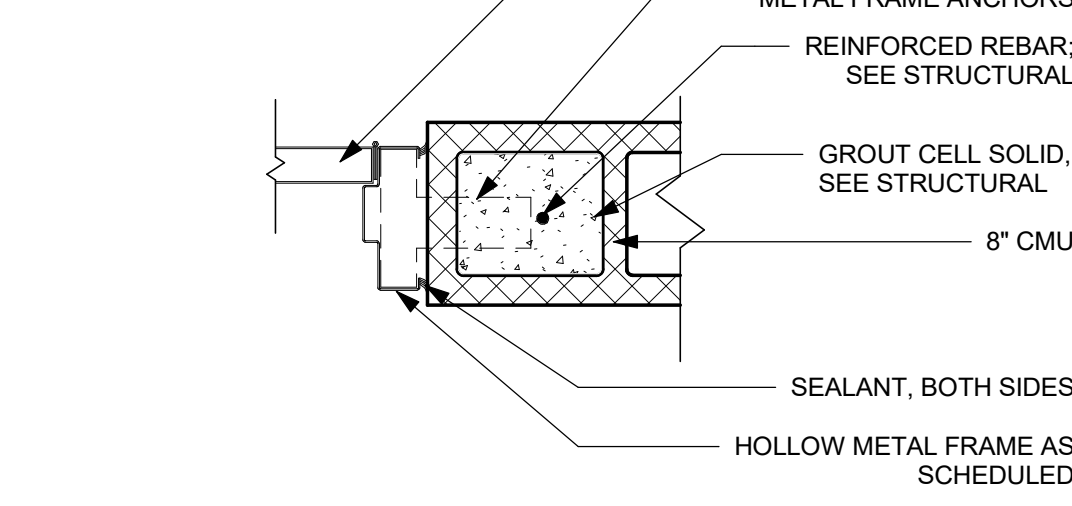
3D STOREFRONT MULLION SILL DETAIL (EXTERIOR) TYP.  
1 1/2" = 1'-0"



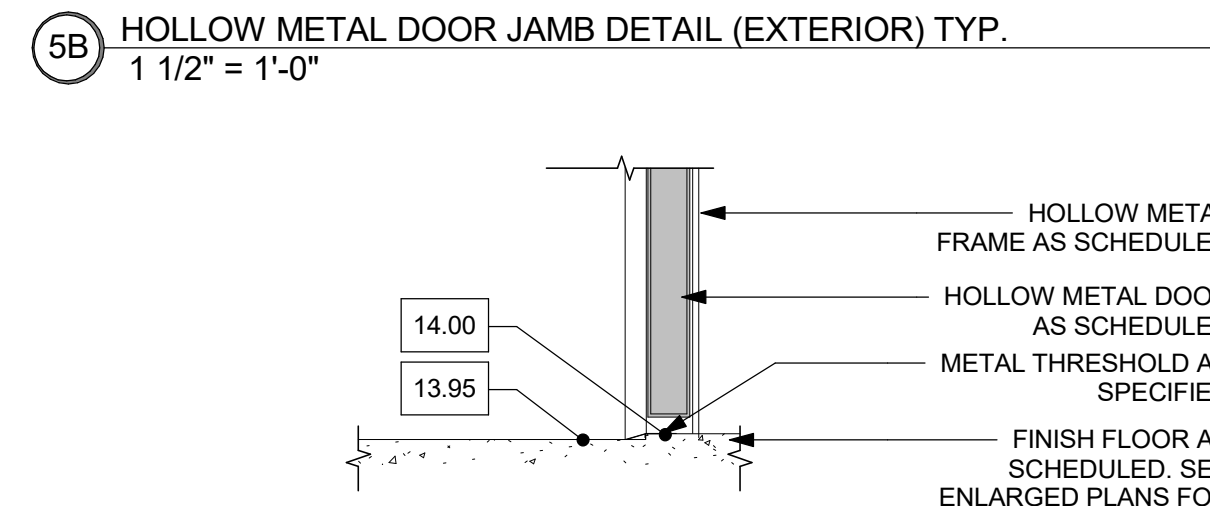
6D SOLID CORE HEAD DETAIL (INTERIOR) TYP.  
1 1/2" = 1'-0"



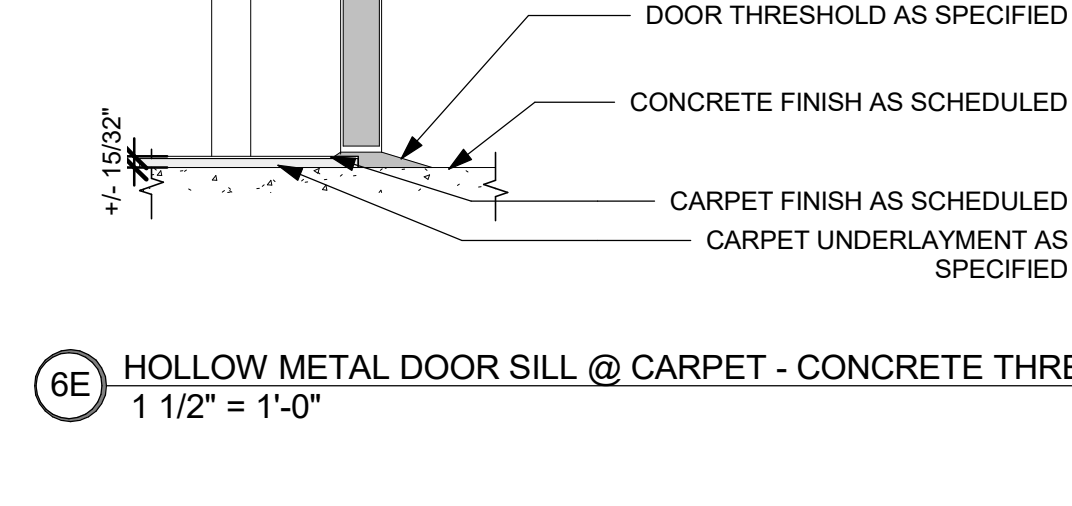
2 HOLLOW METAL DOOR JAMB DETAIL @ 8" CMU WALL TYP.  
1 1/2" = 1'-0"



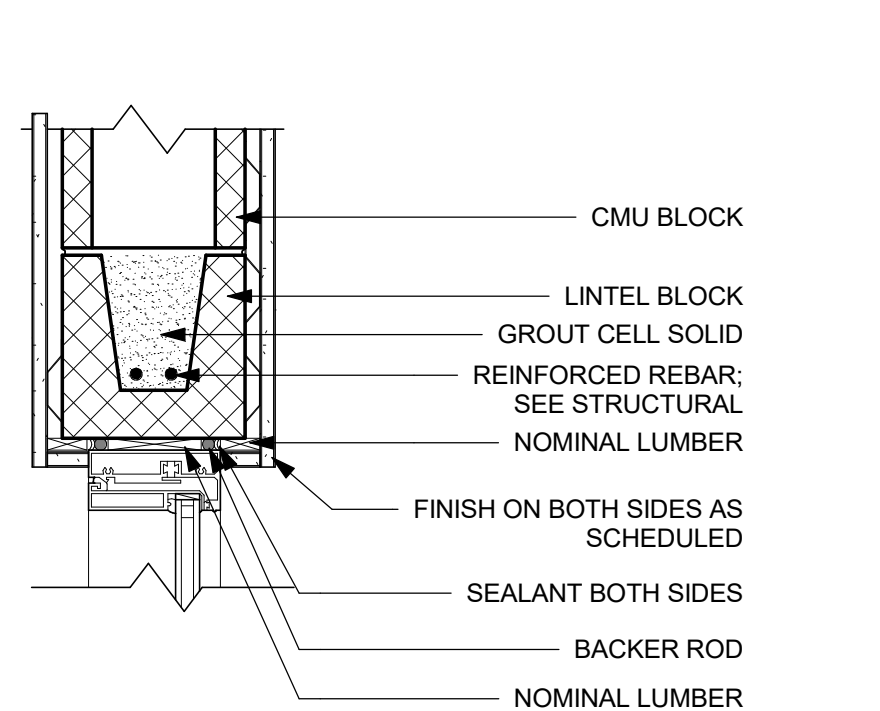
4 ANCHORED DOOR JAMB DETAIL @ 8" CMU WALL TYP.  
1 1/2" = 1'-0"



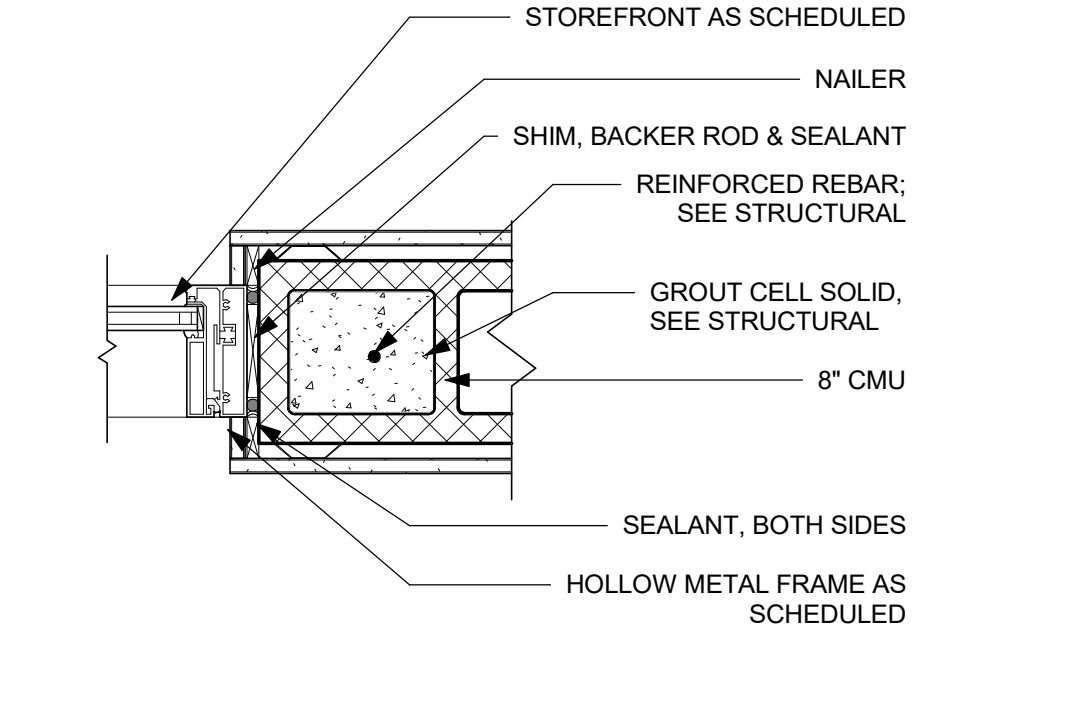
5C HOLLOW METAL DOOR SILL DETAIL (EXTERIOR) TYP.  
1 1/2" = 1'-0"



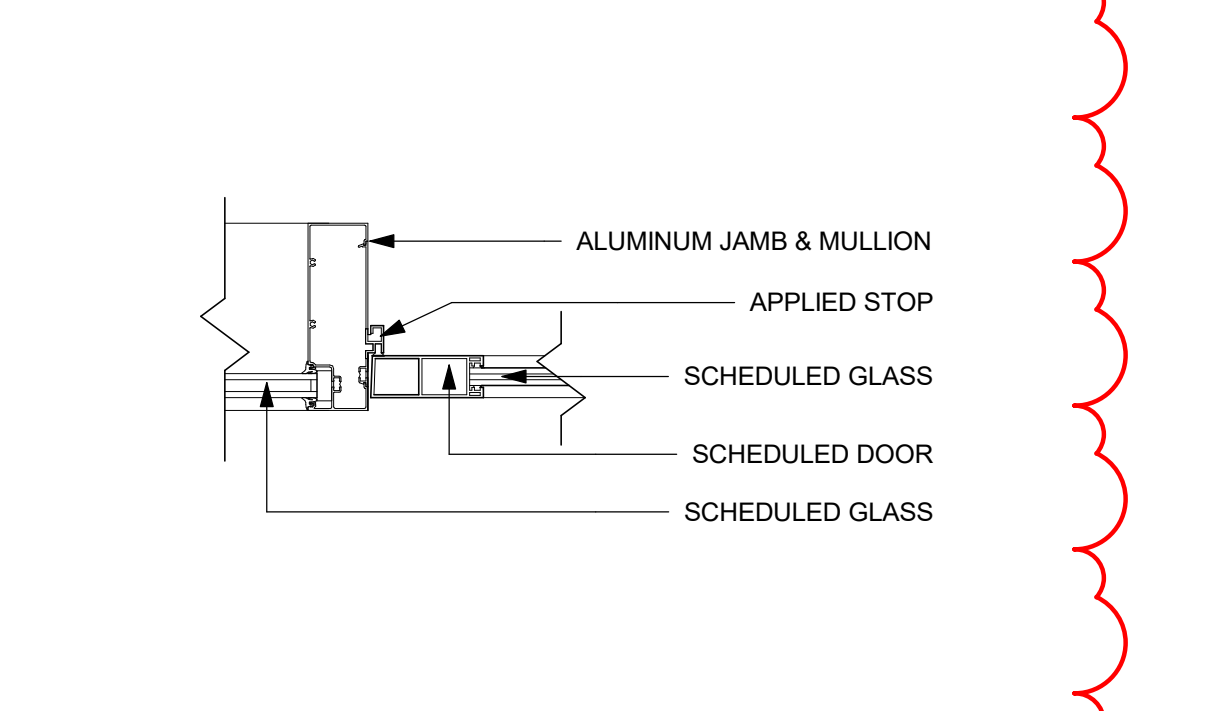
6E HOLLOW METAL DOOR SILL @ CARPET - CONCRETE THRESHOLD TYP.  
1 1/2" = 1'-0"



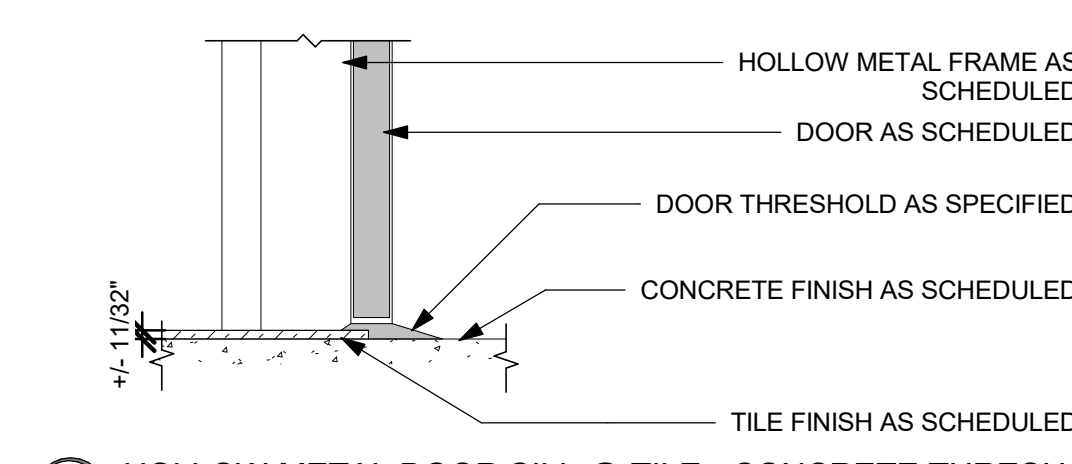
3 STOREFRONT HEAD DETAIL (INTERIOR) @ 8" CMU WALL  
1 1/2" = 1'-0"



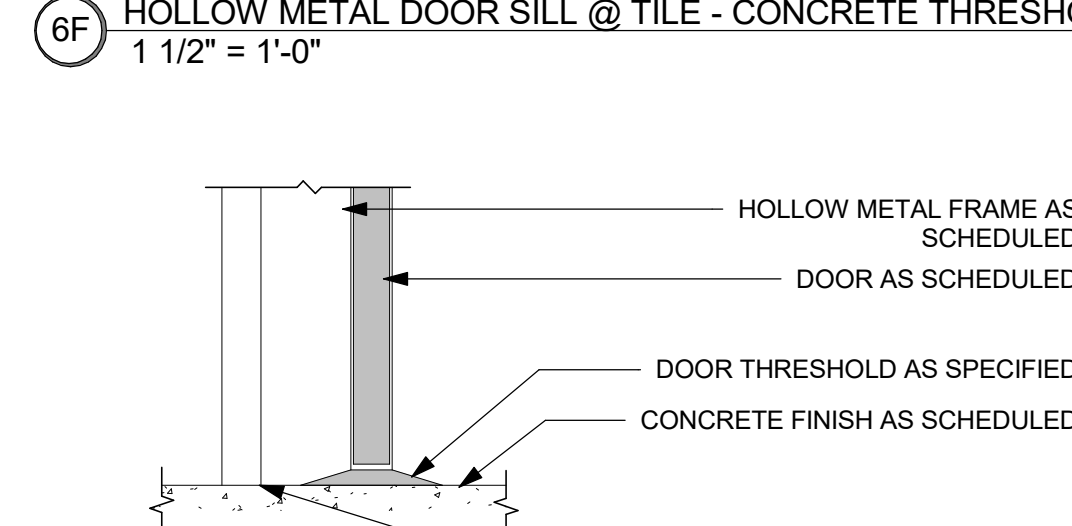
1 STOREFRONT DOOR JAMB DETAIL @ 8" CMU WALL TYP.  
1 1/2" = 1'-0"



5 STOREFRONT DOOR JAMB & MULLION DETAIL  
1 1/2" = 1'-0"



6F HOLLOW METAL DOOR SILL @ TILE - CONCRETE THRESHOLD TYP.  
1 1/2" = 1'-0"



6G HOLLOW METAL DOOR SILL @ CONCRETE THRESHOLD TYP.  
1 1/2" = 1'-0"

6/3/2026 9:46:49 AM

**RMG**  
 RANDY M. GOODLOE, AIA, APAC  
 755 KIRBY STREET  
 LAKE CHARLES, LOUISIANA  
 OFFICE: 337.456.3036  
 FAX: 337.456.3773

**ARCHITECT**  
 RANDY MICHAEL GOODLOE  
 No. 4086  
 ARCHITECT  
 REGISTERED ARCHITECT  
 L.A. LICENSE NO. 4086

NEW CONSTRUCTION  
**FORD PRO**  
 FOR  
**MIKE WILLIS**  
 2010 PATTON ST.

**© COPYRIGHT 2026,**  
 RANDY M. GOODLOE, A.I.A. APAC  
 ALL INFORMATION, EITHER DRAWN, WRITTEN,  
 OR IMPLIED APPEARING IN THIS DOCUMENT  
 SHALL NOT BE DUPLICATED, DISCLOSED, OR  
 OTHERWISE USED WITHOUT THE WRITTEN  
 PERMISSION OF THE AUTHOR, RANDY M.  
 GOODLOE, A.I.A. APAC. THIS DOCUMENT IS AN  
 INSTRUMENT OF SERVICE AND IS THE SOLE  
 PROPERTY OF THE AUTHOR. FURTHERMORE,  
 THE USE OF THIS DOCUMENT FOR ANY  
 PURPOSE SHALL BE REVOKED IF THE INTENT  
 OF THE DESIGN OR THE CONSTRUCTION  
 TECHNIQUES OR DETAILS SHOWN HEREIN  
 ARE NOT ADHERED TO OR THE  
 CONTRACTUAL AGREEMENT GOVERNING  
 THEIR USE ARE NOT STRICTLY ADHERED TO.

PROJECT NO.  
**25012**

PROJECT MANAGER  
**TM**

DATE ISSUED  
**2026.05.22**

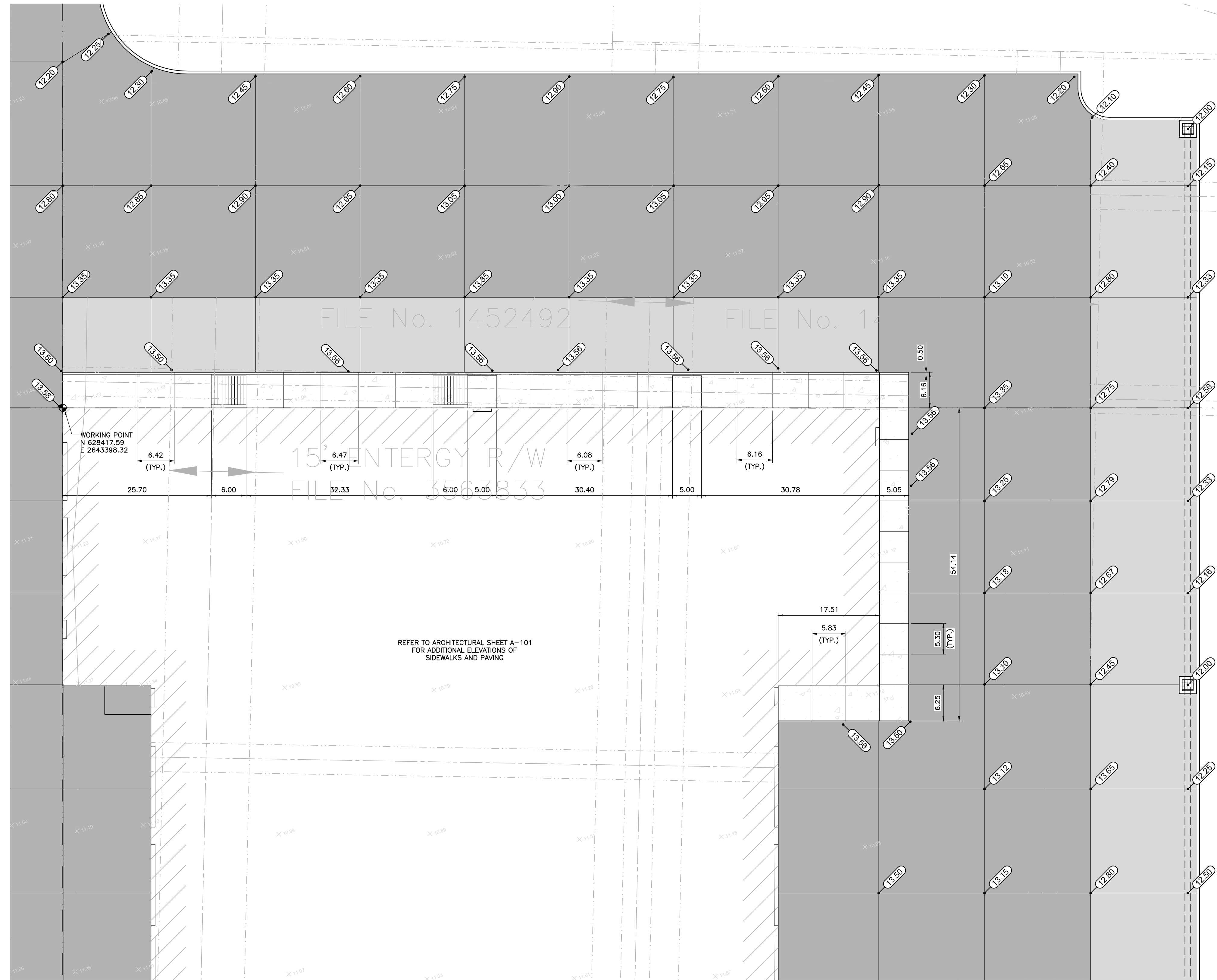
REVISED

NO.	DESCRIPTION	DATE
A	ADDENDUM 1	2026.06.03

SHEET NUMBER  
**A-250**  
 HEAD, JAMB, & SILL  
 DETAILS







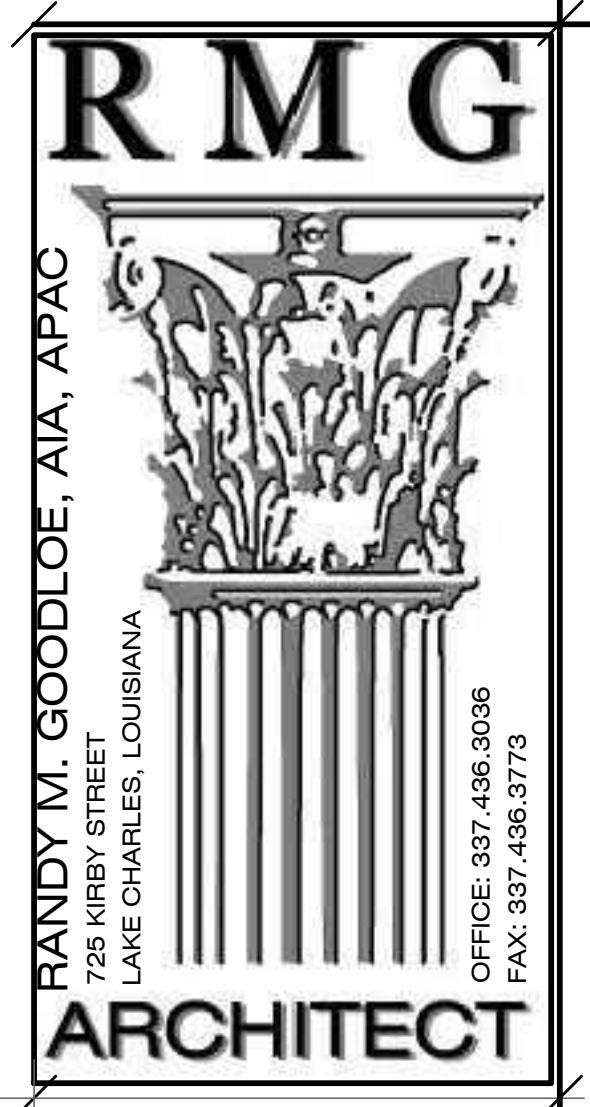
1 ENLARGED SITE LAYOUT PLAN  
SCALE: 1" = 10'-0"



**SUBGRADE PREPARATION AND STRUCTURAL FILL NOTES (CIVIL ONLY)**

- CONTRACTOR SHALL BE RESPONSIBLE FOR CONTACTING LA ONE CALL TO IDENTIFY ALL UTILITIES PRIOR TO COMMENCEMENT OF ANY CONSTRUCTION ACTIVITIES.
- CONTRACTOR TO LOCATE ALL UTILITIES AND VERIFY NO CONFLICTS EXIST WITH ANY PROPOSED STORMWATER AND/OR UTILITY ROUTING PRIOR TO COMMENCEMENT OF ANY CONSTRUCTION ACTIVITIES. IF ANY CONFLICTS ARE IDENTIFIED THE CONTRACTOR SHALL NOTIFY THE ARCHITECT FOR RESOLUTION PRIOR TO COMMENCEMENT OF CONSTRUCTION.
- FOR AREAS IMMEDIATELY UNDER BUILDING PAD AND 3 FEET OUTSIDE OF PAVING LINE, CONTRACTOR SHALL REMOVE ALL VEGETATION, TOPSOIL, ORGANIC MATTER AND EXISTING IMPROVEMENTS, INCLUDING FOUNDATIONS, GRAVEL, ASPHALT, AND CONCRETE PAVING, TO AN ELEVATION OF TWO (2) FEET BELOW EXISTING GRADE. REMOVE ANY EXISTING FOUNDATIONS AND IN THEIR ENTIRETY AND BACKFILL WITH STRUCTURAL FILL PER DIRECTIONS BELOW. THE CUT DEPTH SHALL BE A MINIMUM; ADDITIONAL CUT SHALL BE ALLOWED AS REQUIRED FOR DRAINAGE OF THE EXCAVATION. DEPTH OF EXCAVATION SHALL BE POSITIVELY IDENTIFIED AND DOCUMENTED BY TESTING AGENCY AND PROVIDED TO ARCHITECT AND ENGINEER FOR REVIEW PRIOR TO INSTALLATION OF STRUCTURAL FILL MATERIAL.
- ANY SOILS REMOVED WITHOUT THE PROPER AUTHORIZATION FROM THE ARCHITECT/ENGINEER WILL BE FILLED WITH STRUCTURAL FILL AS REQUIRED AT NO ADDITIONAL COST TO THE OWNER.
- DISPOSE OF ALL EXISTING SOILS/VEGETATION PER OWNER'S DIRECTIVE ACCORDING TO FEDERAL, STATE, AND LOCAL REGULATIONS.
- AFTER ALL MATERIALS HAVE BEEN REMOVED TO THE PROPER SUBGRADE ELEVATION, THE CONTRACTOR SHALL PROOF ROLL THE SUBGRADE WITH A LOADED TANDEM AXLE DUMP TRUCK. ANY SUBGRADE FAILURES, "SOFT SPOTS", SHALL BE REMOVED AND REPLACED WITH STRUCTURAL FILL. ENGINEER TO BE ADVISED A MINIMUM OF 24 HOURS PRIOR TO PERFORMANCE OF PROOFROLL AND PROOFROLL TO BE OBSERVED BY TESTING AGENCY.  
  
NO "EXTRAS" WILL BE AWARDED FOR EFFORTS NECESSARY TO REPAIR AREAS THAT FAIL PROOF ROLL AS A RESULT OF DEGRADATION BY EXPOSURE TO RAIN AND EXCESSIVE CONSTRUCTION TRAFFIC. THIS DETERMINATION WILL BE MADE SOLELY BY THE ARCHITECT/ENGINEER.
- ALL STRUCTURAL FILL MATERIAL SHALL BE INSTALLED IN 6" THICK LOOSE LIFTS AND COMPACTED TO 95% STANDARD PROCTOR DENSITY AT +/-2% OF THE OPTIMUM MOISTURE CONTENT (ASTM D 698). STRUCTURAL FILL MATERIAL SHALL BE A LIME-TREATED SILTY OR SANDY CLAY WITH A LIQUID LIMIT BETWEEN 30-42 AND A PLASTICITY INDEX (P.I.) BETWEEN 12 AND 22. PROPERTIES OF FILL MATERIAL ARE TO BE VERIFIED BY A TESTING AGENCY PRIOR TO INSTALLATION. LIME TREATMENT PERCENTAGE TO BE DETERMINED USING LA DOTR TR 416, REFER TO SECTION 31200 "EARTH MOVING" FOR FURTHER BIDDING DIRECTIONS. PROPOSED LIME MATERIAL AND APPLICATION RATE, BASED ON RESULTS OF TR 416, TO BE SUBMITTED FOR REVIEW BY ENGINEER PRIOR TO MIXING. LIME TO BE PIT MIXED - NO SITE MIXING PERMITTED.  
  
BID SUBMISSION SHALL CONSIDER 19 LBS OF LIME (HYDRATED OR GRANULAR QUICKLIME) PER SQUARE YARD APPLIED TO A DEPTH OF 12". ANY REQUIRED INCREASE OR DECREASE OF APPLICATION RATE (BASED ON RESULTS OF TR 416 TESTING) WILL BE ADDRESSED BY A CONTRACT MODIFICATION AND CONSIDER (ONLY) THE COST OF THE QUANTITY CHANGE OF MATERIAL.
- COMPACTION OF EACH LIFT SHALL BE VERIFIED BY LAB TEST PRIOR TO INSTALLING NEXT LIFT. A MINIMUM TESTING FREQUENCY OF ONE (1) TEST PER 2,500 SQUARE FEET, BUT NO LESS THAN 3 TESTS, PER LIFT SHALL BE PERFORMED. A QUALIFIED INDEPENDENT GEOTECHNICAL ENGINEERING TESTING AGENCY SHALL VERIFY PROPERTIES OF THE STRUCTURAL FILL MATERIALS AS WELL AS IN SITU COMPACTION OF FILL MATERIALS.  
  
REFER TO SPECIFICATION SECTION 31200 "EARTH MOVING" FOR ADDITIONAL MATERIAL AND TESTING REQUIREMENTS.  
  
INITIAL (BORROW PIT) SOIL SAMPLE AND ANALYSIS, TR 416 TESTING, LIME TREATMENT OBSERVATION, AND POST LIME APPLICATION TESTING TO BE PROCURED BY CONTRACTOR TO ENSURE PROPER AND TIMELY COORDINATION OF THIS EFFORT DURING THE SUBMITTAL PROCESS. TESTING AGENCY TO HAVE A LOUISIANA LICENSED CIVIL P.E. ON STAFF. SUBMIT THE LICENSE INFORMATION OF THIS INDIVIDUAL PRIOR TO THE PRE-CONSTRUCTION MEETING FOR REVIEW BY THE ENGINEER.  
  
EXCAVATION DEPTH OBSERVATION, PROOFROLL OBSERVATION, AND COMPACTION TESTING TO BE PROCURED BY OWNER.  
  
CONTRACTOR SHALL PROVIDE A UNIT PRICE (CUBIC YARD) FOR EXCAVATION OF EXISTING MATERIAL AND INSTALLATION AND COMPACTION OF LIME-TREATED STRUCTURAL FILL MATERIAL. THIS UNIT PRICE WILL INCLUDE BOTH EXCAVATION AND INSTALLATION OF THE MATERIAL.
- CONTRACTOR IS TO MAINTAIN DRAINAGE PATHS TO SHED RUNOFF AWAY FROM ALL STRUCTURAL FILL AREAS UNTIL THEY ARE COMPLETED.
- CONTRACTOR SHALL KEEP THE EXCAVATED AREAS, AND SURFACES OF IMPORTED FILL, FREE FROM STANDING WATER AT ALL TIME. SHOULD THIS EFFORT INCLUDE ADDITIONAL EXCAVATION, GRADING, PUMPING OF WATER, ETC., THIS WILL NOT BE CONSIDERED AN "EXTRA" AND NO CONTRACT MODIFICATIONS WILL BE AWARDED.  
  
SUBGRADE PREPARATION AND STRUCTURAL FILL NOTES BASED ON RECOMMENDATIONS CONTAINED IN GEOTECHNICAL REPORT (DJH FILE 25-032, DATED 19 NOVEMBER 2026) AS PREPARED BY DANIEL J. HOLDER, P.E., INC., LAKE CHARLES, LOUISIANA AS DIRECTED FOR USE BY THE ARCHITECT.

ADDENDUM NO. 1 REV 1: MAY 27, 2026

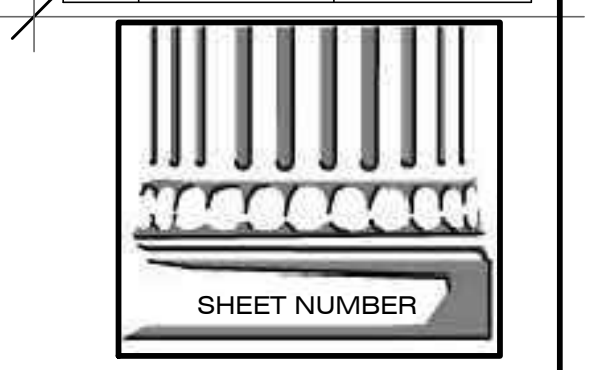


LA. LICENSE NO. 4086

NEW CONSTRUCTION  
**FORD PRO**  
FOR  
**MIKE WILLIS**  
2010 PATTON ST.

© COPYRIGHT 2019, RANDY M. GOODLOE, A.I.A. APAC. ALL INFORMATION, EITHER DRAWN, WRITTEN, OR IMPLIED APPEARING IN THIS DOCUMENT, SHALL NOT BE DUPLICATED, DISCLOSED, OR OTHERWISE USED WITHOUT THE WRITTEN PERMISSION OF THE AUTHOR, RANDY M. GOODLOE, AIA, APAC. THIS DOCUMENT IS AN INSTRUMENT OF SERVICE AND IS THE SOLE PROPERTY OF THE AUTHOR. FURTHERMORE, THE USE OF THIS DOCUMENT FOR ANY PURPOSE SHALL BE REVOKED, IF THE INTENT OF THE DESIGN OR THE CONSTRUCTION TECHNIQUES OR DETAILS SHOWN HEREIN ARE NOT ADHERED TO OR THE CONTRACTUAL AGREEMENT GOVERNING THEIR USE ARE NOT STRICTLY ADHERED TO.

PROJECT NO.	25012
PROJECT MANAGER	TM
DATE ISSUED	05.22.26
REVISED	



**DUHON + PLEASANT**  
CONSULTING ENGINEERS, LLC  
337 564 5918 5393 BIG LAKE ROAD  
WWW.DANDPENGINERS.COM LAKE CHARLES LA 70605  
CIVIL & STRUCTURAL ENGINEERS

**C-102 R1**  
ENLARGED PLAN

10/21/2025 4:32:02 PM