

Asbestos Inspection and Lead-Containing Paint Screening Report

St. Landry Bank – Eunice Branch

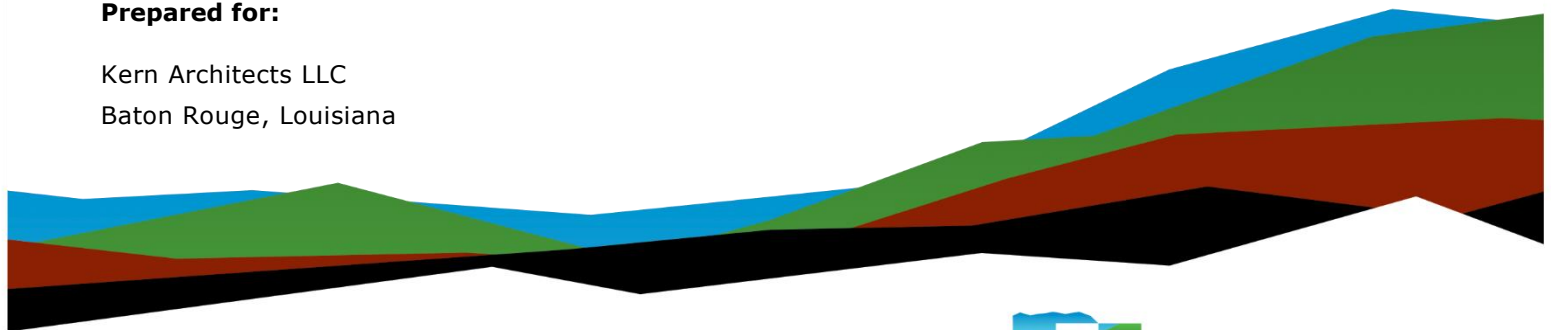
101 North 2nd Street

Eunice, LA 70535

January 14, 2025 | Terracon Project Number: EH247233

Prepared for:

Kern Architects LLC
Baton Rouge, Louisiana



Nationwide
[Terracon.com](https://www.terracon.com)

- Facilities
- Environmental
- Geotechnical
- Materials



2822 O'Neal Lane, Building B
Baton Rouge, Louisiana 70816
P (225) 344-6052
Terracon.com

January 14, 2025

Kern Architects LLC
11822 Justice Avenue
Baton Rouge, LA 70816

Attn: Mr. Daniel Kern
E: daniel.kern@kernarchitects.com

RE: Asbestos Inspection and Lead-Containing Paint Screening Report
St. Landry Bank - Eunice Branch
101 North 2nd Street
Eunice, LA 70535
Terracon Project Number: EH247233

Dear Mr. Kern:

Terracon Consultants, Inc. (Terracon) is pleased to present the findings of this asbestos inspection and lead-containing paint (LCP) screening performed at the above referenced facility. The assessment was conducted in general accordance with Terracon Proposal No. PEH247233, dated December 4, 2024. Terracon understands that this assessment was requested due to the planned renovation of the structure.

Asbestos-containing materials were identified in the samples collected and analyzed as part of this assessment. Lead-containing paint was not identified in the samples collected and analyzed as part of this assessment. Please refer to the attached report for details.

Terracon appreciates the opportunity to provide this service to Kern Architects LLC. If you have any questions regarding this report, please contact the undersigned at (225) 344-6052.

Sincerely,

Terracon Consultants, Inc.

A handwritten signature in black ink, appearing to read "Jeremiah Garms".

Jeremiah Garms
Senior Staff Industrial Hygienist

A handwritten signature in black ink, appearing to read "Jeff A. Delise".

Jeff A. Delise
Senior Project Manager

Table of Contents

1.0	Introduction	1
1.1	Project Objective	1
1.2	Site Limitations Inaccessible Areas	1
1.3	Asbestos Inspection	1
1.4	Limited Lead-Containing Paint Screening.....	2
2.0	Building Description.....	2
3.0	Asbestos Inspection.....	2
3.1	Field Activities	2
3.2	Visual Assessment	3
3.3	Physical Assessment.....	3
3.4	Sample Collection and Analysis.....	3
4.0	Asbestos Regulatory Overview	4
5.0	Asbestos Findings.....	6
6.0	Asbestos Recommendations	7
6.1	Special Conditions.....	7
7.0	Limited Lead-Containing Paint Screening.....	8
7.1	Field Activites	8
7.2	Sample Analysis.....	8
7.3	Regulatory Overview	8
7.4	Findings.....	9
7.5	Recommendations.....	9
8.0	Reliance	10
9.0	General Comments.....	10
APPENDIX A	Asbestos Sample Summary	
APPENDIX B	Laboratory Analytical Reports	
APPENDIX C	Sample Location Drawings	
APPENDIX D	Photograph Log	
APPENDIX E	Licenses and Certifications	

1.0 Introduction

Terracon Consultants, Inc. (Terracon) conducted an asbestos inspection and LCP screening of the facility located at 101 North 2nd Street, Eunice, Louisiana. The assessment was conducted on December 13, 2024 by a Louisiana Department of Environmental Quality (LDEQ) accredited asbestos inspector and accredited lead inspector.

1.1 Project Objective

The objective of this assessment is to identify the presence, quantity, and location of asbestos-containing materials (ACM) and lead-containing paint (LCP) that may be subject to impact during proposed renovation activities.

Terracon's scope of work was limited to the interior and exterior of the existing two-story, 10,000 square foot concrete structure. The areas included in this scope of work define Terracon's Project Area. The results for the limited sampling are not meant to apply to the site as a whole and are limited to impacted areas only.

1.2 Site Limitations Inaccessible Areas

At the time of the asbestos inspection, Terracon could not access the roof area. The roof access ladder had been removed and the access point was not safely reachable from a standard ladder. Areas not accessible during this inspection should be assessed prior to performing activities that may disturb materials in these areas.

1.3 Asbestos Inspection

The scope of services included an inspection for asbestos-containing materials (ACM) as required by the United States Environmental Protection Agency (USEPA) regulation 40 CFR 61, Subpart M, National Emission Standards for Hazardous Air Pollutants (NESHAP), and the Louisiana Environmental Regulatory Code (ERC) Title 33, Part III, Section 5151 (Chapter 51), which prohibit the release of asbestos fibers to the atmosphere during renovation or demolition activities. The asbestos NESHAP regulation and Chapter 51 require that potentially regulated asbestos-containing building materials be identified, classified, and quantified prior to planned disturbances or demolition/renovation activities.

1.4 Limited Lead-Containing Paint Screening

The limited lead-containing paint screening was included utilizing paint chip bulk sampling techniques to identify lead concentrations in various painted surfaces which will be impacted by renovation activities. Lead is regulated by the USEPA through the Louisiana Department of Environmental Quality (LDEQ) and the United States Occupational Safety and Health Administration (OSHA). As such, lead safe work practices will be required if lead containing paints are identified. USEPA and LDEQ regulations would also apply for disposal of lead-containing demolition waste. All occupational exposure to lead occurring in the course of construction work, including renovation activities, painting, alteration and repairs is subject to the OSHA lead standard (29 CFR 1926.62).

2.0 Building Description

BUILDING INFORMATION			
Commercial Building			
Address	101 North 2nd Street		
Building Use	Bank		
Building Square Footage	10,000	Number of Floors	2
Construction Date(s)	Not Reported		
Roof Type	Built-Up-Roof System (BUR)		
BUILDING CONSTRUCTION			
Foundation	Slab-on-grade		
Flooring Substrate	Reinforced concrete		
Interior Wall Finishes	Cement with plaster		

3.0 Asbestos Inspection

3.1 Field Activities

The asbestos inspection was conducted by Mr. Jeremiah Garms, a Louisiana Department of Environmental Quality (LDEQ) accredited asbestos inspector (Accreditation Number: 140570). Applicable accreditations are included in Appendix E. The inspection was performed in general accordance with the sample collection protocols established in EPA regulation 40 CFR 763, the Asbestos Hazard Emergency Response Act (AHERA). A summary of inspection activities is provided below.

3.2 Visual Assessment

Our inspection activities began with visual observations of the interior and exterior of the Project Area to identify homogeneous areas of suspect ACM. A homogeneous area consists of building materials that appear similar throughout in terms of color, and texture with consideration given to the date of application. The assessment was conducted throughout visually accessible areas of the Project Area. Building materials identified as glass, wood, metal, or rubber were not considered suspect ACM.

3.3 Physical Assessment

A physical assessment of each homogeneous area of suspect ACM was conducted to assess the friability and condition of the materials. A friable material is defined by the EPA as a material that can be crumbled, pulverized, or reduced to powder by hand pressure when dry. Friability was assessed by physically touching suspect materials.

3.4 Sample Collection and Analysis

Based on the visual assessment, bulk samples of suspect ACM were collected in general accordance with the sampling protocols outlined in 40 CFR Part 763, Subpart E (AHERA). Random samples of suspect materials were collected in each homogeneous area. The inspector collected bulk samples using wet methods as applicable to reduce the potential for fiber release. Samples were placed in sealable containers and labeled with unique sample numbers using an indelible marker.

The selection of sample locations and frequency of sampling were based on Terracon's observations and the assumption that like materials in the same area are homogeneous.

Terracon collected a total of 86 bulk samples from 22 homogeneous areas of suspect ACM from the Project Area. A summary of suspected ACM materials collected during the inspection is included as Appendix A. Selected photographs are presented in Appendix D.

Bulk samples were submitted under chain-of-custody to a laboratory accredited under the National Voluntary Laboratory Accreditation Program (NVLAP) and Louisiana Environmental Laboratory Accreditation Program (LELAP) for analysis by polarized light microscopy (PLM) per EPA methods (40 CFR 763, Appendix E, Subpart E, Section 1). The asbestos content, where applicable, was determined by microscopic visual estimation. The laboratory analytical report is included in Appendix B.

Laboratory analysis was performed by EMSL Analytical, Inc. of Baton Rouge, Louisiana (NVLAP Accreditation No 200375-0; LELAP Accreditation No 01950).

4.0 Asbestos Regulatory Overview

Federal regulations pertaining to asbestos are included in AHERA (US EPA 40 CFR 763); NESHAP (EPA 40 CFR 61); OSHA Asbestos Standards (29 CFR 1910.1001 and 29 CFR 1926.1101), and ASHARA (Asbestos School Hazard Abatement Reauthorization Act). Many states have additional requirements including state-specific licensing and certification. In Louisiana, these regulations include, but are not limited to: LDEQ Chapter 27 of the ERC (LAC 33:III.Chapter 27) and LDEQ Chapter 51 of the ERC (LAC 33:III.Chapter 51).

The federal asbestos NESHAP standard (40 CFR Part 61, Subpart M) regulates asbestos fiber emissions and asbestos waste disposal practices. NESHAP also requires the identification and classification of existing ACM according to friability prior to demolition or renovation activity. Under NESHAP, ACM is identified as either friable, Category I nonfriable or Category II nonfriable ACM.

Friable materials are those that, when dry, may be crumbled, pulverized, or reduced to powder by hand pressure. Category I nonfriable ACM includes packings, gaskets, resilient floor coverings and asphalt roofing products containing more than 1% asbestos. Category II nonfriable ACM are any materials other than Category I materials that contain more than 1% asbestos.

Friable ACM, along with Category I and Category II nonfriable ACM, which is in poor condition and has become friable or which will be subjected to drilling, sanding, grinding, cutting, or abrading and which could be crushed or pulverized during anticipated renovation or demolition activities are considered regulated ACM (RACM). Building materials confirmed to be ACM through the collection of bulk sampling and subsequent laboratory analysis, or presumed ACM, must be removed prior to intentional disturbance during planned renovation/demolition activities. Asbestos abatement must be conducted by Cal/OSHA-accredited asbestos abatement contractors. Third-party air monitoring should be conducted during the abatement activities.

Category I nonfriable ACM are exclusively asbestos-containing packings, gaskets, resilient floor coverings, resilient floor covering mastics and asphalt roofing products that contain more than 1% asbestos. Category II nonfriable ACM are all other nonfriable materials other than Category I nonfriable ACM that contain more than 1% asbestos. Category II nonfriable ACM generally includes but is not limited to cementitious material such as: cement pipes, cement siding, cement panels, glazing, mortar and grouts.

The State of Louisiana has established Chapter 27 of the ERC (LAC 33:III.Chapter 27) to regulate the identification, management, and abatement of ACM in schools and state buildings. Chapter 27 requires any asbestos-related activity in a school or state building to be performed by an individual or company accredited by the State of Louisiana, through the LDEQ. An asbestos-related activity consists of the disturbance (whether intentional or unintentional) or abatement of ACM, the performance of asbestos inspections, the development of management plans and response actions, asbestos project design, the collection or analysis of asbestos samples, monitoring for airborne asbestos or any other activity required to be accredited under Louisiana Department of Environmental Quality Chapter 27 Appendix A.

In non-state, non-school buildings, the State of Louisiana sets forth emission standards for asbestos under Chapter 51 of the ERC (LAC 33:III.Chapter 51). Per Chapter 51 Section P, the following activities, when conducted, must be performed by accredited individuals: asbestos inspections, asbestos abatement, and monitoring for airborne asbestos fibers.

The Louisiana Air Quality Regulations (LAC 33:III.Chapter 51, Subchapter M) require that an inspection be conducted by a person currently accredited as an LDEQ asbestos inspector. LDEQ requires a notification by submitting either an AAC-2 (a) form or AAC-2 (b) form. An AAC 2 (a) form is required when requesting Asbestos Disposal Verification Forms (ADVF) for Asbestos Contaminated Debris Activities (ACDA), Demolition, Renovation, and/or Response Action projects where Regulated Asbestos Containing Material (RACM) is present, or assumed to be present, above the established thresholds or as otherwise required by LAC 33:III.5151.F.1. The AAC-2 (a) form must be either postmarked or hand delivered to the Department at least 10 working days prior to the scheduled dates of asbestos removal. An AAC 2 (b) form is required when greater than 64 square feet of Vinyl Asbestos Tile (VAT) is removed without the intent of making it RACM, or when lab analysis of properly sampled materials indicates that no ACM is present; that ACM present is not RACM and will not be made RACM by the demolition; or that all RACM present is less than established thresholds. The established thresholds per LAC 33:III.5151.F.1 include the combined amount of RACM less than 60 linear feet on pipes, 64 square feet on other facility components or 27 cubic feet of material where length or area could not be measured previously. A Form AAC-2 (b) must be postmarked or hand delivered to the Department at least 5 working days prior to the scheduled date of asbestos removal or 3 working days if the removal only includes resilient floor covering per LAC 33:III.5151.F.2.c.

Any individual or company contracted to perform a demolition or renovation activity that disturbs RACM in excess of the established thresholds must be recognized by the Louisiana Licensing Board for Contractors to perform asbestos abatement.

The United States Occupational Safety and Health Administration (USOSHA) asbestos standard for construction (29 CFR 1926.1101) regulates workplace exposure to asbestos. The USOSHA standard requires that employee exposure to airborne asbestos must not exceed 0.1 fibers per cubic centimeter of air (0.1 f/cc) as an eight-hour time weighted average (TWA) and not exceed 1.0 fibers per cubic centimeter of air (1.0 f/cc) over a 30-minute time known as an excursion limit (EL). The TWA and EL are known as USOSHA’s asbestos permissible exposure limits (PELs). The USOSHA standard classifies construction and maintenance activities that could disturb ACM and specifies work practices and precautions that employers must follow when engaging in each class of regulated work. The standard also specifies requirements for handling materials containing asbestos in concentrations less than or equal to 1%.

5.0 Asbestos Findings

Laboratory analysis confirmed the following asbestos-containing materials:

**TABLE 1
 CONFIRMED ASBESTOS CONTAINING MATERIALS**

**St. Landry Bank - Eunice Branch
 101 North 2nd Street
 Eunice, Louisiana 70535**

HA No.	Description	Material Location	Percent/Type Asbestos	NESHAP Classification	Condition	Estimated Quantity
3	9"x9" White and Beige Vinyl Floor Tile with Black Mastic	Hallways, Customer Areas, Teller Areas	Floor Tile - 7% Chrysotile Adhesive - ND Mastic - 10% Chrysotile	CAT I	Good	2,800 SF
9	9"x9" Grey Floor Tile with Black Mastic	Bank Vault and Side room in vault	Floor Tile - 6% Chrysotile Mastic - 10% Chrysotile	CAT I	Good	200 SF
10	Black Asphalt Patching at Pipe Connection Points	Mechanical Room	8% Chrysotile	CAT I	Good	20 Units
11	Grey and White Plaster Patching at Pipe Connection Points	Mechanical Room	4% Chrysotile	RACM	Good	11 Units
23	Roof Core	Roof	Assumed (Not accessible for sampling)	CAT I	Good	8,500 SF

***Quantities listed are approximate for the total square footage of material observed during the inspection. Total quantities of materials to be abated is to be determined by the contractor.**

Legend:

CH – Chrysotile

RACM - Regulated Asbestos

Containing Material
Cat. I - Category I Non-Friable
Asbestos Containing Material
Cat. II - Category II Non-Friable
Asbestos Containing Material

SF - Square Feet; LF - Linear Feet

Please refer to the Asbestos Inspection Sample Summary in Appendix A for a summary of all materials collected.

6.0 Asbestos Recommendations

The results of this inspection identified ACM. Terracon understands that the identified ACM will be made RACM in quantities in excess of the established regulatory thresholds. Therefore, these materials should be removed and disposed of by a Louisiana-licensed asbestos abatement contractor prior disturbance. This would require that all sections of the AAC-2 (a) Form be completed and submitted to LDEQ prior to renovation or demolition activities and an Asbestos Disposal Verification Form (ADVF) requested in accordance with the requirements of as indicated in LAC 33:III.5151 Subclause F.1.a. An ADVF is required for each load of RACM disposed. Upon proper notification, the LDEQ will issue an ADVF to provide approval to begin renovation or demolition activities. An active AAC-2 (a) form must be on site during all RACM removal activities.

Terracon recommends preparing specifications (Project Design) for ACM removal. The specifications should include the scope of work, personal protective equipment, work procedures, air monitoring, and documentation.

It should be noted that suspect materials, other than those identified during this inspection may exist within the Project Area. If additional but un-sampled suspect ACMs are revealed during demolition activities, the material(s) must be assumed to contain asbestos and treated as such unless sampled by an accredited inspector and laboratory analysis determines otherwise.

6.1 Special Conditions

Contractors performing renovation work should be advised of the locations of materials containing asbestos and their responsibilities with respect to protection of employee exposures to asbestos found in the OSHA Asbestos standard for construction (29 CFR 1926.1101).

According to LDEQ regulations, asbestos-containing resilient floor coverings that are removed by using dry ice, heat, wet methods, and chemicals where the tiles are removed intact (with only minor tears or minor breakage) are not considered regulated asbestos-containing materials (RACM). Additionally, asbestos-containing mastic used to

attach resilient flooring to the floor surface that are removed by chemical or other means that results in the asbestos fibers in asbestos-containing waste material (ACWM) being bound within a macro substrate and cannot reasonably become airborne unless further forces are applied are also not considered RACM. These materials may remain in-place such that they remain in good condition.

An AAC-2 (b) form must be completed and submitted to LDEQ at least 3 working days prior to renovations where greater than 64 square feet of asbestos-containing resilient flooring is removed without the intent of creating RACM.

7.0 Limited Lead-Containing Paint Screening

7.1 Field Activities

The limited lead-containing paint screening included an evaluation of painted building components to be affected by the proposed renovation activities utilizing lead paint chip sampling techniques. Samples were placed in sealable containers and labeled with unique sample numbers using an indelible marker. Terracon collected 6 paint chip samples.

7.2 Sample Analysis

Bulk paint chips were collected from various surfaces/components and were submitted under chain of custody to an accredited laboratory for lead analysis by USEPA SW-846 Method 7000B Flame Atomic Absorption (FAA) Spectrophotometry.

Laboratory analysis was performed by EMSL Analytical, Inc. of Baton Rouge, Louisiana (A2LA Accreditation No 2845.03; LELAP Accreditation No 01950).

The laboratory's accreditation is included within Appendix D.

7.3 Regulatory Overview

OSHA 29 CFR 1926.62 Subpart D, Lead, applies to all renovation/demolition where an employee may be occupationally exposed to lead. The employer shall communicate information concerning lead hazards and communicating information concerning hazards and appropriate protective measures to employees, including training. Where lead is present, it should be assumed that workers will be exposed to lead above the action level and personal protective measures (based on the type of disturbance) should be implemented until an exposure assessment is completed.

7.4 Findings

Analytical results of the collected paint chips are available below:

TABLE 2
SUMMARY OF PAINT CHIP SAMPLES

Sample ID	Location	Component	Substrate	Color	Lead Content (Percent weight)
Pb-1	Customer Area	Doorframe	Metal	Dark Beige	0.32
Pb-2	Restroom #2	Wall	Cement	Green	0.29
Pb-3	Hallway	Wall	Cement	Grey	0.039
Pb-4	Hallway	Doorframe	Metal	Beige	0.089
Pb-5	Teller Area	Door	Metal	Green	0.077
Pb-6	Small Vault Room	Wall	Cement	Green	0.14

7.5 Recommendations

OSHA does not define lead-containing coatings. Any detectable level of lead presents a potential source of exposure depending on how the material is disturbed. Therefore, Terracon recommends that potential contractors are made aware of the findings of this limited lead-containing paint survey. Personnel and/or contractors should utilize work practices pursuant to the OSHA lead standard (29 CFR 1926.62) when impacting lead-containing components. The full OSHA lead standard should be referenced for compliance.

At the time of the limited lead-containing paint survey the subject site does not meet the definition of "target housing". Target housing is a home or residential unit built before 1978. Therefore, the lead testing conducted herein was not intended to comply with regulations for target housing, including the HUD Lead Safe Housing Rule (LSHR) (24 CFR Part 35, subparts B-R), the EPA/HUD Lead Disclosure Rule (the identical 24 CFR 35, subpart A and 40 CFR 745, subpart F, or the EPA Renovation, Repair and Painting (RRP) Rule.

8.0 Reliance

This report is for the exclusive use of Kern Architects LLC for the project being discussed. Reliance by any other party on this report is prohibited without written authorization of Terracon and the Client. Reliance on this report by the Client and all authorized parties will be subject to the terms, conditions, and limitations stated in the proposal, this report, and Terracon's Agreement for Services. The limitations of liability defined in Terracon's Agreement for Services are the aggregate limit of Terracon's liability to the Client.

9.0 General Comments

These services were conducted in a manner consistent with the level of care and skill ordinarily exercised by members of the profession currently practicing under similar conditions in the same locale. The results, findings, conclusions and recommendations expressed in this report are based on conditions observed during our inspection of the building. The information contained in this report is relevant to the date on which this inspection was performed and should not be relied upon to represent conditions at a later date. This report has been prepared on behalf of and exclusively for use by the Client for specific application to their project as discussed. This report is not a bidding document. Contractors or consultants reviewing this report must draw their own conclusions regarding further investigation or remediation deemed necessary. Terracon does not warrant the work of regulatory agencies, laboratories or other third parties supplying information which may have been used in the preparation of this report. No warranty, express or implied is made.

APPENDIX A

ASBESTOS SAMPLE SUMMARY

APPENDIX A

St. Landry Bank - Eunice Branch
101 North 2nd Street
Eunice, Louisiana 70535

HA	Sample No.	Description	Locations	Condition	Friable/ Nonfriable	Result
1	CT5-1-1	White Popcorn Ceilings	Throughout 1st and 2nd Floors	Good	Friable	ND
	CT5-1-2					ND
	CT5-1-3					ND
	CT5-1-4					ND
	CT5-1-5					ND
	CT5-1-6					ND
	CT5-1-7					ND
2	MG7-2-8	Yellow Carpet Mastic	1st Floor customer area	Good	Nonfriable	ND
	MG7-2-9					ND
	MG7-2-10					ND
3	FT1-3-11	9"x9" White and Beige Vinyl Floor Tile with Black Mastic	Hallways, Customer Areas, Teller Areas	Good	Nonfriable	Floor Tile - 7% Chysotile Adhesive - ND
	FT1-3-12					Mastic - 10% Chrysotile
	FT1-3-13					Floor Tile - 7% Chysotile Adhesive - ND
	FT1-3-14					Mastic - 10% Chrysotile
	FT1-3-15					Floor Tile - 7% Chysotile Adhesive - ND
	FT1-3-16					Mastic - 10% Chrysotile
	FT1-3-17					Floor Tile - 7% Chysotile Adhesive - ND
FT1-3-17	Mastic - 10% Chrysotile					
4	FT5-4-18	1"x1" Green Ceramic Floor Tile with Grout	Restroom 1 and 4	Good	Nonfriable	ND
	FT5-4-19					ND
	FT5-4-20					ND
5	FT5-5-21	3.5"x3.5" Green Ceramic Wall Tile with Grout	Restroom 1	Good	Nonfriable	ND
	FT5-5-22					ND
	FT5-5-23					ND
6	FT5-6-24	3.5"x3.5" Grey Ceramic Wall Tile with Grout	Restroom 4	Good	Nonfriable	ND
	FT5-6-25					ND
	FT5-6-26					ND
7	MG3-7-27	4" Brown Cove Base with Mastic	Hallways	Good	Nonfriable	ND
	MG3-7-28					ND
	MG3-7-29					ND

HA	Sample No.	Description	Locations	Condition	Friable/ Nonfriable	Result
8	WB5-8-30	Beige and White Striped Wallpaper	Hallways	Good	Nonfriable	ND
	WB5-8-31					ND
	WB5-8-32					ND
	WB5-8-33					ND
	WB5-8-34					ND
	WB5-8-35					ND
	WB5-8-36					ND
9	FT1-9-37	9"x9" Grey Floor Tile with Black Mastic	Bank Vault and Sideroom in vault	Good	Nonfriable	Floor Tile - 6% Chrysotile Mastic - 10% Chrysotile
	FT1-9-38					Floor Tile - 6% Chrysotile Mastic - 10% Chrysotile
	FT1-9-39					Floor Tile - 6% Chrysotile Mastic - 10% Chrysotile
10	MIS-10-40	Black Asphalt Patching at Pipe Connection Points	Mechanical Room	Good	Friable	Patching - 8% Chrysotile
	MIS-10-41					Patching - 8% Chrysotile
	MIS-10-42					Patching - 8% Chrysotile
11	MIS-11-43	Grey and White Plaster Patching at Pipe Connection Points	Mechanical Room	Good	Friable	Plaster - 4% Chrysotile
	MIS-11-44					Plaster - 4% Chrysotile
	MIS-11-45					Plaster - 4% Chrysotile
12	MIS-12-46	Black HVAC Seal	Mechanical Room	Good	Nonfriable	ND
	MIS-12-47					ND
	MIS-12-48					ND
13	MG7-13-49	Yellow Carpet Mastic	Stairwells	Good	Nonfriable	ND
	MG7-13-50					ND
	MG7-13-51					ND
14	FT5-14-52	1"x1" Green Ceramic Floor Tile with Grout and Thinset	2nd Floor Kitchen	Good	Nonfriable	ND
	FT5-14-53					ND
	FT5-14-54					ND
15	FT5-15-55	1"x1" Black Ceramic Floor Tile with Grout and Thinset	2nd Floor Kitchen	Good	Nonfriable	ND
	FT5-15-56					ND
	FT5-15-57					ND
16	FT1-16-58	9"x9" Beige Vinyl Floor Tile with Mastic	2nd Floor - Conference Room, Meeting Room, Hallway, and Storage Area	Good	Nonfriable	ND
	FT1-16-59					ND
	FT1-16-60					ND
17	HP5-17-61	Beige Cement Wall Coating	1st and 2nd Floor Walls	Good	Nonfriable	ND
	HP5-17-62					ND
	HP5-17-63					ND
	HP5-17-64					ND
	HP5-17-65					ND
	HP5-17-66					ND
	HP5-17-67					ND

HA	Sample No.	Description	Locations	Condition	Friable/ Nonfriable	Result
18	FT5-18-68	12"x36" Green Vinyl Stair Treads with Mastic	Center Stairwell	Good	Nonfriable	ND
	FT5-18-69					ND
	FT5-18-70					ND
19	MA6-19-71	Exterior Stucco	Exterior	Good	Nonfriable	ND
	MA6-19-72					ND
	MA6-19-73					ND
20	MA2-20-74	CMU Blocks with Mortar	Exterior	Good	Nonfriable	ND
	MA2-20-75					ND
	MA2-20-76					ND
21	MA1-21-77	Red Bricks with Mortar	Exterior	Good	Nonfriable	ND
	MA1-21-78					ND
	MA1-21-79					ND
22	PL3-22-80	White Plaster Skim Coating over Cement Walls	Interior	Good	Friable	ND
	PL3-22-81					ND
	PL3-22-82					ND
	PL3-22-83					ND
	PL3-22-84					ND
	PL3-22-85					ND
	PL3-22-86					ND

Legend:

ND - None Detected

CH - Chrysotile, AM - Amosite, CR - Crocidolite

APPENDIX B

LABORATORY ANALYTICAL REPORTS



EMSL Analytical, Inc.

18369 Petroleum Drive Baton Rouge, LA 70809
Tel/Fax: (225) 755-1920 / (225) 755-1989
<http://www.EMSL.com> / batonrougelab@emsl.com

EMSL Order: 252500023
Customer ID: AQTE62
Customer PO: EH247233
Project ID:

Attention: Jerry Garms
Terracon Consultants, Inc.
2822 - B O'Neal Lane
Baton Rouge, LA 70816

Phone: (225) 305-9095
Fax: (225) 344-6346
Received Date: 12/16/2024 8:30 AM
Analysis Date: 12/18/2024 - 01/09/2025
Collected Date: 12/13/2024

Project: St. Landry Bank/ EH247233

Test Report: Asbestos Analysis of Bulk Materials via AHERA Method 40CFR 763 Subpart E Appendix E supplemented with EPA 600/R-93/116 using Polarized Light Microscopy

Sample	Description	Appearance	Non-Asbestos		Asbestos
			% Fibrous	% Non-Fibrous	% Type
CT5-1-1 252500023-0001	Customer Area - Popcorn Ceilings (White)	White Fibrous Homogeneous	15% Glass HA: 1	85% Non-fibrous (Other)	None Detected
CT5-1-2 252500023-0002	Hallway - Popcorn Ceilings (White)	White Fibrous Homogeneous	15% Glass HA: 1	85% Non-fibrous (Other)	None Detected
CT5-1-3 252500023-0003	Hallway - Popcorn Ceilings (White)	White Fibrous Homogeneous	15% Glass HA: 1	85% Non-fibrous (Other)	None Detected
CT5-1-4 252500023-0004	Hallway - Popcorn Ceilings (White)	White Fibrous Homogeneous	15% Glass HA: 1	85% Non-fibrous (Other)	None Detected
CT5-1-5 252500023-0005	Teller Area - Popcorn Ceilings (White)	White Fibrous Homogeneous	15% Glass HA: 1	85% Non-fibrous (Other)	None Detected
CT5-1-6 252500023-0006	Kitchen Area 2nd floor - Popcorn Ceilings (White)	White Fibrous Homogeneous	15% Glass HA: 1	85% Non-fibrous (Other)	None Detected
CT5-1-7 252500023-0007	Meeting Area 2nd floor - Popcorn Ceilings (White)	White Fibrous Homogeneous	15% Glass HA: 1	85% Non-fibrous (Other)	None Detected
MG7-2-8 252500023-0008	customer Area - yellow carpet mastic	Yellow Non-Fibrous Homogeneous	HA: 2	100% Non-fibrous (Other)	None Detected
MG7-2-9 252500023-0009	customer Area - yellow carpet mastic	Yellow Non-Fibrous Homogeneous	HA: 2	100% Non-fibrous (Other)	None Detected
MG7-2-10 252500023-0010	customer Area - yellow carpet mastic	Yellow Non-Fibrous Homogeneous	HA: 2	100% Non-fibrous (Other)	None Detected
FT1-3-11-Adhesive 252500023-0011	Customer Area - 9x9 White Beige Floor Tile w/ Black Mastic	Yellow Non-Fibrous Homogeneous	HA: 3	100% Non-fibrous (Other)	None Detected
FT1-3-11-Floor Tile 252500023-0011A	Customer Area - 9x9 White Beige Floor Tile w/ Black Mastic	Tan Non-Fibrous Homogeneous	HA: 3	93% Non-fibrous (Other)	7% Chrysotile

Initial report from: 01/09/2025 14:43:42



EMSL Analytical, Inc.

18369 Petroleum Drive Baton Rouge, LA 70809

Tel/Fax: (225) 755-1920 / (225) 755-1989

<http://www.EMSL.com/batonrougelab@emsl.com>

EMSL Order: 252500023
Customer ID: AQTE62
Customer PO: EH247233
Project ID:

Test Report: Asbestos Analysis of Bulk Materials via AHERA Method 40CFR 763 Subpart E Appendix E supplemented with EPA 600/R-93/116 using Polarized Light Microscopy

Sample	Description	Appearance	Non-Asbestos		Asbestos
			% Fibrous	% Non-Fibrous	% Type
FT1-3-11-Mastic 252500023-0011B	Customer Area - 9x9 White Beige Floor Tile w/ Black Mastic	Black Non-Fibrous Homogeneous	HA: 3	90% Non-fibrous (Other)	10% Chrysotile
FT1-3-12-Adhesive 252500023-0012	Hallway - 9x9 White Beige Floor Tile w/ Black Mastic	Yellow Non-Fibrous Homogeneous	HA: 3	100% Non-fibrous (Other)	None Detected
FT1-3-12-Floor Tile 252500023-0012A	Hallway - 9x9 White Beige Floor Tile w/ Black Mastic	Gray/Tan Non-Fibrous Homogeneous	HA: 3	93% Non-fibrous (Other)	7% Chrysotile
FT1-3-12-Mastic 252500023-0012B	Hallway - 9x9 White Beige Floor Tile w/ Black Mastic	Black Non-Fibrous Homogeneous	HA: 3	90% Non-fibrous (Other)	10% Chrysotile
FT1-3-13-Adhesive 252500023-0013	Hallway - 9x9 White Beige Floor Tile w/ Black Mastic	Yellow Non-Fibrous Homogeneous	HA: 3	100% Non-fibrous (Other)	None Detected
FT1-3-13-Floor Tile 252500023-0013A	Hallway - 9x9 White Beige Floor Tile w/ Black Mastic	Tan Non-Fibrous Homogeneous	HA: 3	93% Non-fibrous (Other)	7% Chrysotile
FT1-3-13-Mastic 252500023-0013B	Hallway - 9x9 White Beige Floor Tile w/ Black Mastic	Black Non-Fibrous Homogeneous	HA: 3	90% Non-fibrous (Other)	10% Chrysotile
FT1-3-14-Adhesive 252500023-0014	Hallway - 9x9 White Beige floor tile w/ Black Mastic		HA: 3		Insufficient Material
FT1-3-14-Floor Tile 252500023-0014A	Hallway - 9x9 White Beige floor tile w/ Black Mastic	Tan Non-Fibrous Homogeneous	HA: 3	93% Non-fibrous (Other)	7% Chrysotile
FT1-3-14-Mastic 252500023-0014B	Hallway - 9x9 White Beige floor tile w/ Black Mastic	Black Non-Fibrous Homogeneous	HA: 3	90% Non-fibrous (Other)	10% Chrysotile
FT1-3-15-Adhesive 252500023-0015	Teller Area - 9x9 White Beige floor tile w/ Black Mastic		HA: 3		Insufficient Material
FT1-3-15-Floor Tile 252500023-0015A	Teller Area - 9x9 White Beige floor tile w/ Black Mastic	Tan Non-Fibrous Homogeneous	HA: 3	93% Non-fibrous (Other)	7% Chrysotile
FT1-3-15-Mastic 252500023-0015B	Teller Area - 9x9 White Beige floor tile w/ Black Mastic	Black Non-Fibrous Homogeneous	HA: 3	90% Non-fibrous (Other)	10% Chrysotile
FT1-3-16-Adhesive 252500023-0016	Teller Area - 9x9 White Beige floor tile w/ Black Mastic		HA: 3		Insufficient Material
FT1-3-16-Floor Tile 252500023-0016A	Teller Area - 9x9 White Beige floor tile w/ Black Mastic	Tan Non-Fibrous Homogeneous	HA: 3	93% Non-fibrous (Other)	7% Chrysotile

Initial report from: 01/09/2025 14:43:42



EMSL Analytical, Inc.

18369 Petroleum Drive Baton Rouge, LA 70809

Tel/Fax: (225) 755-1920 / (225) 755-1989

<http://www.EMSL.com/batonrougelab@emsl.com>

EMSL Order: 252500023
Customer ID: AQTE62
Customer PO: EH247233
Project ID:

Test Report: Asbestos Analysis of Bulk Materials via AHERA Method 40CFR 763 Subpart E Appendix E supplemented with EPA 600/R-93/116 using Polarized Light Microscopy

Sample	Description	Appearance	Non-Asbestos		Asbestos
			% Fibrous	% Non-Fibrous	% Type
FT1-3-16-Mastic 252500023-0016B	Teller Area - 9x9 White Beige floor tile w/ Black Mastic	Black Non-Fibrous Homogeneous	HA: 3	90% Non-fibrous (Other)	10% Chrysotile
FT1-3-17-Adhesive 252500023-0017	Teller Area - 9x9 White Beige floor tile w/ Black Mastic		HA: 3		Insufficient Material
FT1-3-17-Floor Tile 252500023-0017A	Teller Area - 9x9 White Beige floor tile w/ Black Mastic	Tan Non-Fibrous Homogeneous	HA: 3	93% Non-fibrous (Other)	7% Chrysotile
FT1-3-17-Mastic 252500023-0017B	Teller Area - 9x9 White Beige floor tile w/ Black Mastic	Black Non-Fibrous Homogeneous	HA: 3	90% Non-fibrous (Other)	10% Chrysotile
FT5-4-18-Ceramic Tile 252500023-0018	Restroom #1 - 1x1 Green floor tile w/grout	Green Non-Fibrous Homogeneous	HA: 4	100% Non-fibrous (Other)	None Detected
FT5-4-18-Grout 252500023-0018A	Restroom #1 - 1x1 Green floor tile w/grout	Gray Non-Fibrous Homogeneous	HA: 4	100% Non-fibrous (Other)	None Detected
FT5-4-19-Ceramic Tile 252500023-0019	Restroom #1 - 1x1 Green floor tile w/grout	Green Non-Fibrous Homogeneous	HA: 4	100% Non-fibrous (Other)	None Detected
FT5-4-19-Grout 252500023-0019A	Restroom #1 - 1x1 Green floor tile w/grout	Gray Non-Fibrous Homogeneous	HA: 4	100% Non-fibrous (Other)	None Detected
FT5-4-20-Ceramic Tile 252500023-0020	Restroom #4 - 1x1 Green floor tile w/grout	Blue Non-Fibrous Homogeneous	HA: 4	100% Non-fibrous (Other)	None Detected
FT5-4-20-Grout 252500023-0020A	Restroom #4 - 1x1 Green floor tile w/grout	Gray Non-Fibrous Homogeneous	HA: 4	100% Non-fibrous (Other)	None Detected
FT5-5-21-Ceramic Tile 252500023-0021	Restroom #1 - 3 1/2 x 3 1/2 Green ceramic wall tile w/Grout	Gray Non-Fibrous Homogeneous	HA: 5	100% Non-fibrous (Other)	None Detected
FT5-5-21-Grout 252500023-0021A	Restroom #1 - 3 1/2 x 3 1/2 Green ceramic wall tile w/Grout	Gray Non-Fibrous Homogeneous	HA: 5	100% Non-fibrous (Other)	None Detected
FT5-5-22-Ceramic Tile 252500023-0022	Restroom #1 - 3 1/2 x 3 1/2 Green ceramic wall tile w/Grout	Gray Non-Fibrous Homogeneous	HA: 5	100% Non-fibrous (Other)	None Detected
FT5-5-22-Grout 252500023-0022A	Restroom #1 - 3 1/2 x 3 1/2 Green ceramic wall tile w/Grout	Gray Non-Fibrous Homogeneous	HA: 5	100% Non-fibrous (Other)	None Detected

Initial report from: 01/09/2025 14:43:42



EMSL Analytical, Inc.

18369 Petroleum Drive Baton Rouge, LA 70809

Tel/Fax: (225) 755-1920 / (225) 755-1989

<http://www.EMSL.com/batonrougelab@emsl.com>

EMSL Order: 252500023
Customer ID: AQTE62
Customer PO: EH247233
Project ID:

Test Report: Asbestos Analysis of Bulk Materials via AHERA Method 40CFR 763 Subpart E Appendix E supplemented with EPA 600/R-93/116 using Polarized Light Microscopy

Sample	Description	Appearance	Non-Asbestos		Asbestos
			% Fibrous	% Non-Fibrous	% Type
FT5-5-23-Ceramic Tile 252500023-0023	Restroom #1 - 3 1/2 x 3 1/2 Green ceramic wall tile w/Grout	Blue Non-Fibrous Homogeneous	HA: 5	100% Non-fibrous (Other)	None Detected
FT5-5-23-Grout 252500023-0023A	Restroom #1 - 3 1/2 x 3 1/2 Green ceramic wall tile w/Grout	Gray Non-Fibrous Homogeneous	HA: 5	100% Non-fibrous (Other)	None Detected
FT5-6-24-Ceramic Tile 252500023-0024	Restroom #4 - 3 1/2 x 3 1/2 Grey ceramic wall tile w/Grout	Gray Non-Fibrous Homogeneous	HA: 6	100% Non-fibrous (Other)	None Detected
FT5-6-24-Grout 252500023-0024A	Restroom #4 - 3 1/2 x 3 1/2 Grey ceramic wall tile w/Grout	Gray Non-Fibrous Homogeneous	HA: 6	100% Non-fibrous (Other)	None Detected
FT5-6-25-Ceramic Tile 252500023-0025	Restroom #4 - 3 1/2 x 3 1/2 Grey ceramic wall tile w/Grout	Gray Non-Fibrous Homogeneous	HA: 6	100% Non-fibrous (Other)	None Detected
FT5-6-25-Grout 252500023-0025A	Restroom #4 - 3 1/2 x 3 1/2 Grey ceramic wall tile w/Grout	Gray Non-Fibrous Homogeneous	HA: 6	100% Non-fibrous (Other)	None Detected
FT5-6-26-Ceramic Tile 252500023-0026	Restroom #4 - 3 1/2 x 3 1/2 Grey ceramic wall tile w/Grout	Blue Non-Fibrous Homogeneous	HA: 6	100% Non-fibrous (Other)	None Detected
FT5-6-26-Grout 252500023-0026A	Restroom #4 - 3 1/2 x 3 1/2 Grey ceramic wall tile w/Grout	Gray Non-Fibrous Homogeneous	HA: 6	100% Non-fibrous (Other)	None Detected
MG3-7-27-Cove Base 252500023-0027	Hallway - 4 in Brown cove base w/ mastic (wallpaper Attached to Mastic)	Brown Non-Fibrous Homogeneous	HA: 7	100% Non-fibrous (Other)	None Detected
MG3-7-27-Mastic 252500023-0027A	Hallway - 4 in Brown cove base w/ mastic (wallpaper Attached to Mastic)	Yellow Non-Fibrous Homogeneous	HA: 7	100% Non-fibrous (Other)	None Detected
MG3-7-28-Cove Base 252500023-0028	Hallway - 4 in Brown cove base w/ mastic (wallpaper Attached to Mastic)	Brown Non-Fibrous Homogeneous	HA: 7	100% Non-fibrous (Other)	None Detected
MG3-7-28-Mastic 252500023-0028A	Hallway - 4 in Brown cove base w/ mastic (wallpaper Attached to Mastic)	Yellow Non-Fibrous Homogeneous	HA: 7	100% Non-fibrous (Other)	None Detected
MG3-7-29-Cove Base 252500023-0029	Hallway - 4 in Brown cove base w/ mastic (wallpaper Attached to Mastic)	Brown Non-Fibrous Homogeneous	HA: 7	100% Non-fibrous (Other)	None Detected

Initial report from: 01/09/2025 14:43:42



EMSL Analytical, Inc.

18369 Petroleum Drive Baton Rouge, LA 70809

Tel/Fax: (225) 755-1920 / (225) 755-1989

<http://www.EMSL.com> / batonrougelab@emsl.com

EMSL Order: 252500023
Customer ID: AQTE62
Customer PO: EH247233
Project ID:

Test Report: Asbestos Analysis of Bulk Materials via AHERA Method 40CFR 763 Subpart E Appendix E supplemented with EPA 600/R-93/116 using Polarized Light Microscopy

Sample	Description	Appearance	Non-Asbestos		Asbestos
			% Fibrous	% Non-Fibrous	% Type
MG3-7-29-Mastic 252500023-0029A	Hallway - 4 in Brown cove base w/ mastic (wallpaper Attached to Mastic)	Yellow Non-Fibrous Homogeneous		100% Non-fibrous (Other)	None Detected
			HA: 7		
WB5-8-30 252500023-0030	Hallway - Beige + White Stripped Wallpaper	Tan/White Fibrous Homogeneous	25% Cellulose	75% Non-fibrous (Other)	None Detected
			HA: 8		
WB5-8-31 252500023-0031	Hallway - Beige + White Stripped Wallpaper	Tan/White Fibrous Homogeneous	25% Cellulose	75% Non-fibrous (Other)	None Detected
			HA: 8		
WB5-8-32 252500023-0032	Hallway - Beige + White Stripped Wallpaper	Tan/White Fibrous Homogeneous	25% Cellulose	75% Non-fibrous (Other)	None Detected
			HA: 8		
WB5-8-33 252500023-0033	Office #1 - Beige + White Stripped Wallpaper	Tan/White Fibrous Homogeneous	25% Cellulose	75% Non-fibrous (Other)	None Detected
			HA: 8		
WB5-8-34 252500023-0034	Office #1 - Beige + White Stripped Wallpaper	Tan Fibrous Homogeneous	25% Cellulose	75% Non-fibrous (Other)	None Detected
			HA: 8		
WB5-8-35 252500023-0035	Hallway - Beige + White Stripped Wallpaper	Tan Fibrous Homogeneous	25% Cellulose	75% Non-fibrous (Other)	None Detected
			HA: 8		
WB5-8-36 252500023-0036	Office #1 - Beige + White Stripped Wallpaper	Tan Fibrous Homogeneous	25% Cellulose	75% Non-fibrous (Other)	None Detected
			HA: 8		
FT1-9-37-Floor Tile 252500023-0037	Bank Vault - 9x9 Grey Floor tile w/ Black Mastic	Gray Non-Fibrous Homogeneous		94% Non-fibrous (Other)	6% Chrysotile
			HA: 9		
FT1-9-37-Mastic 252500023-0037A	Bank Vault - 9x9 Grey Floor tile w/ Black Mastic	Black Non-Fibrous Homogeneous		90% Non-fibrous (Other)	10% Chrysotile
			HA: 9		
FT1-9-38-Floor Tile 252500023-0038	Bank Vault - 9x9 Grey Floor tile w/ Black Mastic	Gray Non-Fibrous Homogeneous		94% Non-fibrous (Other)	6% Chrysotile
			HA: 9		
FT1-9-38-Mastic 252500023-0038A	Bank Vault - 9x9 Grey Floor tile w/ Black Mastic	Black Non-Fibrous Homogeneous		90% Non-fibrous (Other)	10% Chrysotile
			HA: 9		
FT1-9-39-Floor Tile 252500023-0039	Bank Vault - 9x9 Grey Floor tile w/ Black Mastic	Gray Non-Fibrous Homogeneous		94% Non-fibrous (Other)	6% Chrysotile
			HA: 9		
FT1-9-39-Mastic 252500023-0039A	Bank Vault - 9x9 Grey Floor tile w/ Black Mastic	Black Non-Fibrous Homogeneous		90% Non-fibrous (Other)	10% Chrysotile
			HA: 9		

Initial report from: 01/09/2025 14:43:42



EMSL Analytical, Inc.

18369 Petroleum Drive Baton Rouge, LA 70809

Tel/Fax: (225) 755-1920 / (225) 755-1989

<http://www.EMSL.com> / batonrougelab@emsl.com

EMSL Order: 252500023
Customer ID: AQTE62
Customer PO: EH247233
Project ID:

Test Report: Asbestos Analysis of Bulk Materials via AHERA Method 40CFR 763 Subpart E Appendix E supplemented with EPA 600/R-93/116 using Polarized Light Microscopy

Sample	Description	Appearance	Non-Asbestos		Asbestos
			% Fibrous	% Non-Fibrous	% Type
M15-10-40 252500023-0040	Mech Room - Black Asphalt Patching on connection points	Yellow Non-Fibrous Homogeneous	HA: 10	92% Non-fibrous (Other)	8% Chrysotile
M15-10-41 252500023-0041	Mech Room - Black Asphalt Patching on connection points	Yellow Non-Fibrous Homogeneous	HA: 10	92% Non-fibrous (Other)	8% Chrysotile
M15-10-42 252500023-0042	Mech Room - Black Asphalt Patching on connection points	Black Non-Fibrous Homogeneous	HA: 10	92% Non-fibrous (Other)	8% Chrysotile
M15-11-43 252500023-0043	Mech Room - Grey/White Plaster Patching at connection Points	Gray Non-Fibrous Heterogeneous	HA: 11	96% Non-fibrous (Other)	4% Chrysotile
M15-11-44 252500023-0044	Mech Room - Grey/White Plaster Patching at connection Points	Gray Non-Fibrous Heterogeneous	HA: 11	96% Non-fibrous (Other)	4% Chrysotile
M15-11-45 252500023-0045	Mech Room - Grey/White Plaster Patching at connection Points	Gray Non-Fibrous Homogeneous	HA: 11	96% Non-fibrous (Other)	4% Chrysotile
M15-12-46 252500023-0046	Mech Room - Black HVAC seal	Gray Fibrous Heterogeneous	HA: 12	25% Cellulose 75% Non-fibrous (Other)	None Detected
M15-12-47 252500023-0047	Mech Room - Black HVAC seal	Gray Fibrous Heterogeneous	HA: 12	25% Cellulose 75% Non-fibrous (Other)	None Detected
M15-12-48 252500023-0048	Mech Room - Black HVAC seal	Gray Non-Fibrous Homogeneous	HA: 12	25% Cellulose 75% Non-fibrous (Other)	None Detected
MG7-13-49 252500023-0049	Stairwell - Yellow carpet mastic	Yellow Non-Fibrous Homogeneous	HA: 13	100% Non-fibrous (Other)	None Detected
MG7-13-50 252500023-0050	Stairwell - Yellow carpet mastic	Yellow Non-Fibrous Homogeneous	HA: 13	100% Non-fibrous (Other)	None Detected
MG7-13-51 252500023-0051	Stairwell - Yellow carpet mastic	Yellow Non-Fibrous Homogeneous	HA: 13	100% Non-fibrous (Other)	None Detected
FT5-14-52-Ceramic Tile 252500023-0052	Kitchen - 1x1 green ceramic tile w/Grout and thinset	Green Non-Fibrous Homogeneous	HA: 14	100% Non-fibrous (Other)	None Detected
FT5-14-52-Grout 252500023-0052A	Kitchen - 1x1 green ceramic tile w/Grout and thinset	Black Non-Fibrous Homogeneous	HA: 14	100% Non-fibrous (Other)	None Detected

Initial report from: 01/09/2025 14:43:42



EMSL Analytical, Inc.

18369 Petroleum Drive Baton Rouge, LA 70809

Tel/Fax: (225) 755-1920 / (225) 755-1989

<http://www.EMSL.com/batonrougelab@emsl.com>

EMSL Order: 252500023
Customer ID: AQTE62
Customer PO: EH247233
Project ID:

Test Report: Asbestos Analysis of Bulk Materials via AHERA Method 40CFR 763 Subpart E Appendix E supplemented with EPA 600/R-93/116 using Polarized Light Microscopy

Sample	Description	Appearance	Non-Asbestos		Asbestos
			% Fibrous	% Non-Fibrous	% Type
FT5-14-52-Thinset 252500023-0052B	Kitchen - 1x1 green ceramic tile w/Grout and thinset	Tan Non-Fibrous Homogeneous	HA: 14	100% Non-fibrous (Other)	None Detected
FT5-14-53-Ceramic Tile 252500023-0053	Kitchen - 1x1 green ceramic tile w/Grout and thinset	Green Non-Fibrous Homogeneous	HA: 14	100% Non-fibrous (Other)	None Detected
FT5-14-53-Grout 252500023-0053A	Kitchen - 1x1 green ceramic tile w/Grout and thinset	Black Non-Fibrous Homogeneous	HA: 14	100% Non-fibrous (Other)	None Detected
FT5-14-53-Thinset 252500023-0053B	Kitchen - 1x1 green ceramic tile w/Grout and thinset	Tan Non-Fibrous Homogeneous	HA: 14	100% Non-fibrous (Other)	None Detected
FT5-14-54-Ceramic Tile 252500023-0054	Kitchen - 1x1 green ceramic tile w/Grout and thinset	Blue Non-Fibrous Homogeneous	HA: 14	100% Non-fibrous (Other)	None Detected
FT5-14-54-Grout 252500023-0054A	Kitchen - 1x1 green ceramic tile w/Grout and thinset	Gray Non-Fibrous Homogeneous	HA: 14	100% Non-fibrous (Other)	None Detected
FT5-14-54-Thinset 252500023-0054B	Kitchen - 1x1 green ceramic tile w/Grout and thinset	Gray Non-Fibrous Homogeneous	HA: 14	100% Non-fibrous (Other)	None Detected
FT1-15-55-Ceramic Tile 252500023-0055	Kitchen - 1x1 black ceramic tile w/Grout and thinset	Black Non-Fibrous Homogeneous	HA: 15	100% Non-fibrous (Other)	None Detected
FT1-15-55-Grout 252500023-0055A	Kitchen - 1x1 black ceramic tile w/Grout and thinset	Black Non-Fibrous Homogeneous	HA: 15	100% Non-fibrous (Other)	None Detected
FT1-15-55-Thinset 252500023-0055B	Kitchen - 1x1 black ceramic tile w/Grout and thinset		HA: 15		Layer Not Present
FT1-15-55-Glue 252500023-0055C	Kitchen - 1x1 black ceramic tile w/Grout and thinset	Yellow Non-Fibrous Homogeneous	HA: 15	100% Non-fibrous (Other)	None Detected
FT5-15-56-Ceramic Tile 252500023-0056	Kitchen - 1x1 black ceramic tile w/Grout and thinset	Black Non-Fibrous Homogeneous	HA: 15	100% Non-fibrous (Other)	None Detected
FT5-15-56-Grout 252500023-0056A	Kitchen - 1x1 black ceramic tile w/Grout and thinset	Black Non-Fibrous Homogeneous	HA: 15	100% Non-fibrous (Other)	None Detected
FT5-15-56-Thinset 252500023-0056B	Kitchen - 1x1 black ceramic tile w/Grout and thinset		HA: 15		Layer Not Present

Initial report from: 01/09/2025 14:43:42



EMSL Analytical, Inc.

18369 Petroleum Drive Baton Rouge, LA 70809

Tel/Fax: (225) 755-1920 / (225) 755-1989

<http://www.EMSL.com/batonrougelab@emsl.com>

EMSL Order: 252500023
Customer ID: AQTE62
Customer PO: EH247233
Project ID:

**Test Report: Asbestos Analysis of Bulk Materials via AHERA Method 40CFR 763 Subpart E
Appendix E supplemented with EPA 600/R-93/116 using Polarized Light Microscopy**

Sample	Description	Appearance	Non-Asbestos		Asbestos
			% Fibrous	% Non-Fibrous	% Type
FT5-15-56-Glue 252500023-0056C	Kitchen - 1x1 black ceramic tile w/Grout and thinset	Yellow Non-Fibrous Homogeneous	HA: 15	100% Non-fibrous (Other)	None Detected
FT5-15-57-Ceramic Tile 252500023-0057	Kitchen - 1x1 black ceramic tile w/Grout and thinset	Black Non-Fibrous Homogeneous	HA: 15	100% Non-fibrous (Other)	None Detected
FT5-15-57-Grout 252500023-0057A	Kitchen - 1x1 black ceramic tile w/Grout and thinset	Black Non-Fibrous Homogeneous	HA: 15	100% Non-fibrous (Other)	None Detected
FT5-15-57-Thinset 252500023-0057B	Kitchen - 1x1 black ceramic tile w/Grout and thinset		HA: 15		Layer Not Present
FT5-15-57-Glue 252500023-0057C	Kitchen - 1x1 black ceramic tile w/Grout and thinset	Tan Non-Fibrous Homogeneous	HA: 15	100% Non-fibrous (Other)	None Detected
FT5-16-58-Floor Tile 252500023-0058	Conference Rm - 9x9 Beige floor tile w/ mastic	Tan Non-Fibrous Homogeneous	HA: 16	100% Non-fibrous (Other)	None Detected
FT5-16-58-Mastic 252500023-0058A	Conference Rm - 9x9 Beige floor tile w/ mastic	Yellow Non-Fibrous Homogeneous	HA: 16	100% Non-fibrous (Other)	None Detected
FT5-16-58-Grout 252500023-0058B	Conference Rm - 9x9 Beige floor tile w/ mastic	Gray Non-Fibrous Homogeneous	HA: 16	100% Non-fibrous (Other)	None Detected
FT5-16-59-Floor Tile 252500023-0059	Hallway - 9x9 Beige floor tile w/ mastic	Tan Non-Fibrous Homogeneous	HA: 16	100% Non-fibrous (Other)	None Detected
FT5-16-59-Mastic 252500023-0059A	Hallway - 9x9 Beige floor tile w/ mastic	Yellow Non-Fibrous Homogeneous	HA: 16	100% Non-fibrous (Other)	None Detected
FT5-16-59-Grout 252500023-0059B	Hallway - 9x9 Beige floor tile w/ mastic	Gray Non-Fibrous Homogeneous	HA: 16	100% Non-fibrous (Other)	None Detected
FT5-16-60-Floor Tile 252500023-0060	Storage Rm - 9x9 Beige floor tile w/ mastic	Tan Non-Fibrous Homogeneous	HA: 16	100% Non-fibrous (Other)	None Detected
FT5-16-60-Mastic 252500023-0060A	Storage Rm - 9x9 Beige floor tile w/ mastic	Brown Non-Fibrous Homogeneous	HA: 16	100% Non-fibrous (Other)	None Detected
FT5-16-60-Grout 252500023-0060B	Storage Rm - 9x9 Beige floor tile w/ mastic	Gray Non-Fibrous Homogeneous	HA: 16	100% Non-fibrous (Other)	None Detected
HP5-17-61 252500023-0061	Storage #2 - Beige cement wall coating	Gray Non-Fibrous Heterogeneous		100% Non-fibrous (Other)	None Detected

Initial report from: 01/09/2025 14:43:42



EMSL Analytical, Inc.

18369 Petroleum Drive Baton Rouge, LA 70809

Tel/Fax: (225) 755-1920 / (225) 755-1989

<http://www.EMSL.com> / batonrougelab@emsl.com

EMSL Order: 252500023
Customer ID: AQTE62
Customer PO: EH247233
Project ID:

Test Report: Asbestos Analysis of Bulk Materials via AHERA Method 40CFR 763 Subpart E Appendix E supplemented with EPA 600/R-93/116 using Polarized Light Microscopy

Sample	Description	Appearance	Non-Asbestos		Asbestos
			% Fibrous	% Non-Fibrous	% Type
			HA: 17		
HP5-17-62 252500023-0062	Storage #2 - Beige cement wall coating	Gray Non-Fibrous Heterogeneous		100% Non-fibrous (Other)	None Detected
			HA: 17		
HP5-17-63 252500023-0063	Hallway - Beige cement wall coating	Gray Non-Fibrous Heterogeneous		100% Non-fibrous (Other)	None Detected
			HA: 17		
HP5-17-64 252500023-0064	Storage #3 - Beige cement wall coating	Gray Non-Fibrous Heterogeneous		100% Non-fibrous (Other)	None Detected
			HA: 17		
HP5-17-65 252500023-0065	Storage #3 - Beige cement wall coating	Tan Non-Fibrous Homogeneous		100% Non-fibrous (Other)	None Detected
			HA: 17		
HP5-17-66 252500023-0066	Hallway 1st floor - Beige cement wall coating	Tan Non-Fibrous Homogeneous		100% Non-fibrous (Other)	None Detected
			HA: 17		
HP5-17-67 252500023-0067	Hallway 1st floor - Beige cement wall coating	Tan Non-Fibrous Homogeneous		100% Non-fibrous (Other)	None Detected
			HA: 17		
FT5-18-68-Flooring 252500023-0068	Stairwell - 12x36 Green vinyl tile stair tread w/ Mastic	Gray Non-Fibrous Homogeneous		100% Non-fibrous (Other)	None Detected
			HA: 18		
FT5-18-68-Mastic 252500023-0068A	Stairwell - 12x36 Green vinyl tile stair tread w/ Mastic	Yellow Non-Fibrous Homogeneous		100% Non-fibrous (Other)	None Detected
			HA: 18		
FT5-18-69-Flooring 252500023-0069	Stairwell - 12x36 Green vinyl tile stair tread w/ Mastic	Gray Non-Fibrous Homogeneous		100% Non-fibrous (Other)	None Detected
			HA: 18		
FT5-18-69-Mastic 252500023-0069A	Stairwell - 12x36 Green vinyl tile stair tread w/ Mastic	Yellow Non-Fibrous Homogeneous		100% Non-fibrous (Other)	None Detected
			HA: 18		
FT5-18-70-Flooring 252500023-0070	Stairwell - 12x36 Green vinyl tile stair tread w/ Mastic	Blue Non-Fibrous Homogeneous		100% Non-fibrous (Other)	None Detected
			HA: 18		
FT5-18-70-Mastic 252500023-0070A	Stairwell - 12x36 Green vinyl tile stair tread w/ Mastic	Brown Non-Fibrous Homogeneous		100% Non-fibrous (Other)	None Detected
			HA: 18		
MA6-18-71 252500023-0071	Exterior - Exterior Stucco	Gray Non-Fibrous Homogeneous		100% Non-fibrous (Other)	None Detected
			HA: 19		
MA6-18-72 252500023-0072	Exterior - Exterior Stucco	Gray Non-Fibrous Homogeneous		100% Non-fibrous (Other)	None Detected
			HA: 19		

Initial report from: 01/09/2025 14:43:42



EMSL Analytical, Inc.

18369 Petroleum Drive Baton Rouge, LA 70809

Tel/Fax: (225) 755-1920 / (225) 755-1989

<http://www.EMSL.com/batonrougelab@emsl.com>

EMSL Order: 252500023
Customer ID: AQTE62
Customer PO: EH247233
Project ID:

Test Report: Asbestos Analysis of Bulk Materials via AHERA Method 40CFR 763 Subpart E Appendix E supplemented with EPA 600/R-93/116 using Polarized Light Microscopy

Sample	Description	Appearance	Non-Asbestos		Asbestos
			% Fibrous	% Non-Fibrous	% Type
MA6-18-73 252500023-0073	Exterior - Exterior Stucco	Various Non-Fibrous Homogeneous	HA: 19	100% Non-fibrous (Other)	None Detected
MA2-20-74-Block 252500023-0074	Exterior - CMU Blocks w/ mortar	Gray Non-Fibrous Homogeneous	HA: 20	100% Non-fibrous (Other)	None Detected
MA2-20-74-Mortar 252500023-0074A	Exterior - CMU Blocks w/ mortar	White Non-Fibrous Homogeneous	HA: 20	100% Non-fibrous (Other)	None Detected
MA2-20-75-Block 252500023-0075	Exterior - CMU Blocks w/ mortar	Gray Non-Fibrous Homogeneous	HA: 20	100% Non-fibrous (Other)	None Detected
MA2-20-75-Mortar 252500023-0075A	Exterior - CMU Blocks w/ mortar	White Non-Fibrous Homogeneous	HA: 20	100% Non-fibrous (Other)	None Detected
MA2-20-76-Block 252500023-0076	Exterior - CMU Blocks w/ mortar	Gray Non-Fibrous Homogeneous	HA: 20	100% Non-fibrous (Other)	None Detected
MA2-20-76-Mortar 252500023-0076A	Exterior - CMU Blocks w/ mortar	Gray Non-Fibrous Homogeneous	HA: 20	100% Non-fibrous (Other)	None Detected
MA1-21-77-Brick 252500023-0077	Exterior - Red bricks w/ mortar	Tan Non-Fibrous Homogeneous	HA: 21	100% Non-fibrous (Other)	None Detected
MA1-21-77-Mortar 252500023-0077A	Exterior - Red bricks w/ mortar	Red Non-Fibrous Homogeneous	HA: 21	100% Non-fibrous (Other)	None Detected
MA1-21-78-Brick 252500023-0078	Exterior - Red bricks w/ mortar	Tan Non-Fibrous Homogeneous	HA: 21	100% Non-fibrous (Other)	None Detected
MA1-21-78-Mortar 252500023-0078A	Exterior - Red bricks w/ mortar	Red Non-Fibrous Homogeneous	HA: 21	100% Non-fibrous (Other)	None Detected
MA1-21-79-Brick 252500023-0079	Exterior - Red bricks w/ mortar	Red Non-Fibrous Homogeneous	HA: 21	100% Non-fibrous (Other)	None Detected
MA1-21-79-Mortar 252500023-0079A	Exterior - Red bricks w/ mortar	Red Non-Fibrous Homogeneous	HA: 21	100% Non-fibrous (Other)	None Detected

Initial report from: 01/09/2025 14:43:42

2525 00023



Asbestos Bulk Sample Log & Chain of Custody

Lab Use Only:

Lab Name: EMSL Terracon Billing Office: Atlanta Phone No. 285-305-9095 Page 1 of 5

Project Name: St. Landry Bank Project Number: EH247233 Project Manager: Jerry Gorms

Project Address: 101 N. 2nd Street City/State / Zip: Greenville, GA Email Results To: jerry.gorms@terracon.com

Site/Building: Bank

HA	Sample Number	Sample Location	HA Description: (Color, Dimensions, Descriptor, then Type)	HA General Location/Notes	Condition ¹	Frangible?	Estimated Quantity
1	CTS-1-1	Customer Area	Popcorn Ceilings (white)	Throughout 1st floor + 2nd floor	D SD	N	5,200 SF/LF/ Units
	-2	Hallway					
	-3	Hallway					
	-4	Hallway					
	-5	Teller Area					
	-6	Waiting Area 2nd floor					
	-7	Waiting Area 2nd floor					
2	MG-7-2-8	Customer Area	Yellow carpet mastic	1st Floor Customer Area	D SD	N	1,700 SF/LF/ Units
	-9	↓					
	-10	↓					
3	FTI-3-11	Customer Area	9x9 ^{white} Beige Floor Tile w/ Black Mastic	Hallways, Customer Area, Teller Area	D SD	N	2,000 SF/LF/ Units
	-12	Hallway					
	-13	Hallway					

Sampling Date: 12-13-24 Collected by (print): Jerry Gorms Inspector's Signature: [Signature]

Relinquished by: [Signature] Date/Time: 12-13-24 Received by: [Signature] Date/Time: 12/14/24 9:30 AM

Analysis: PLM EPA 800/R-29/116 - PLM 400 Point Count - TEM - Other

Turnaround Time: 6 Hrs - 24 Hrs - 2 Days - 3 Days - 5 Days - Other

Positive Stop: Number of samples: _____

NOV 2024

¹ G = Good (no damage); D = Damaged (<10% distributed or <25% localized); or SD = Significantly Damaged (>10% distributed or >25% localized), F=Frangible NF=Non-Frangible



Asbestos Bulk Sample Log & Chain of Custody

252500023

Lab Use Only:

Lab Name: EMSL

Terracon Billing Office: Baton Rouge

Phone No. _____

Page 2 of 5

HA	Sample Number	Sample Location	HA Description (Color, Dimensions, Descriptor, then Type)	HA General Location/Notes	Condition ¹ Friable? ²	Estimated Quantity
3	F71-3-14	Hallway	9x9 Beige floor tile w/ Black Mastic	Hallways Customer Area	G ¹ D ² SD	2800 SF/LF/ Units
	↓	Teller Area	↓	Teller Area	G ¹ D ² SD	125 SF/LF/ Units
	↓	Teller Area	↓		G ¹ D ² SD	125 SF/LF/ Units
	↓	Teller Area	↓		G ¹ D ² SD	125 SF/LF/ Units
4	F75-4-18	Restroom #2	1x1 Green floor tile w/grout	Restroom #2 + 4	G ¹ D ² SD	125 SF/LF/ Units
	↓	Restroom #2	↓		G ¹ D ² SD	125 SF/LF/ Units
	↓	Restroom #4	↓		G ¹ D ² SD	125 SF/LF/ Units
5	F75-5-21	Restroom #1	3 1/2 x 3 1/2 Green ceramic tile w/Grout	Restroom #1	G ¹ D ² SD	125 SF/LF/ Units
	↓	↓	↓		G ¹ D ² SD	125 SF/LF/ Units
	↓	↓	↓		G ¹ D ² SD	125 SF/LF/ Units
6	F75-6-24	Restroom #4	3 1/2 x 3 1/2 Grey ceramic wall tile w/Grout	Restroom #4	G ¹ D ² SD	125 SF/LF/ Units
	↓	↓	↓		G ¹ D ² SD	125 SF/LF/ Units
	↓	↓	↓		G ¹ D ² SD	125 SF/LF/ Units
7	M63-7-27	Hallway	4" Brown core base w/mastic (wallpaper attached to mastic)	Hallways	G ¹ D ² SD	800 SF/LF/ Units
	↓	Hallway	↓		G ¹ D ² SD	800 SF/LF/ Units
	↓	Hallway	↓		G ¹ D ² SD	800 SF/LF/ Units
8	WBS-8-30	Hallway	Beige + White Striped Wallpaper	Hallways	G ¹ D ² SD	3800 SF/LF/ Units
	↓	Hallway	↓		G ¹ D ² SD	3800 SF/LF/ Units
	↓	Hallway	↓		G ¹ D ² SD	3800 SF/LF/ Units

¹G = Good (no damage); D = Damaged (<10% distributed or <25% localized); or SD = Significantly Damaged (>10% distributed or >25% localized), F=Friable NF=Non-Friable



2525 00023

Asbestos Bulk Sample Log & Chain of Custody

Lab Use Only:

Lab Name: EMSL

Terracon Billing Office: Byron Boyce

Phone No. _____

Page 3 of 5

HA	Sample Number	Sample Location	HA Description (Color, Dimensions, Descriptor, then Type)	HA General Location/Notes	Condition ¹ Frangible?	Estimated Quantity
8	WB5-8-33	Office #1	Beige + white wallpaper Striped	↓	D SD	3,800 SF/LF/ Units
	↓ -34	Office #1				
	↓ -35	Hallway				
	↓ -36	Office #1				
9	F71-9-37	Bank vault	9x9 Grey floor tile w/ Black Mastic	Bank vault + Side Rm.	D SD	200 SF/LF/ Units
	↓ -38	↓				
	↓ -39	↓				
10	M15-10-40	Mech Room	Black Asphalt Patching on connection Paints	Mechanical Room	D SD	20 SF/LF/ Units
	↓ -41	↓				
	↓ -42	↓				
11	M15-11-43	Mech Room	Grey/white Plaster Patching at connection points	Mechanical Room	D SD	10 SF/LF/ Units
	↓ -44	↓				
	↓ -45	↓				
12	M15-12-46	Mech Room	Black HVAC seal	Mechanical Room	D SD	20 SF/LF/ Units
	↓ -47	↓				
	↓ -48	↓				
13	M67-13-49	Stairwell	Yellow carpet mastic	Stairwells	D SD	250 SF/LF/ Units
	↓ 50	↓				
	↓ 51	↓				

¹ G = Good (no damage); D = Damaged (<10% distributed or <25% localized); or SD = Significantly Damaged (>10% distributed or >25% localized), F = Frangible NF = Non-Frangible



Asbestos Bulk Sample Log & Chain of Custody

2525 00023

Lab Use Only:

Lab Name: EMSC

Terracon Billing Office: Baton Rouge

Phone No. _____

Page 4 of 5

HA	Sample Number	Sample Location	HA Description (Color, Dimensions, Descriptor, then Type)	HA General Location/Notes	Condition ¹ Friable? ²	Estimated Quantity
14	F75-14-50	Kitchen	1x1 green ceramic tile w/grout and thinset	2nd floor Kitchen	G D SD	150 700
	↓ ↓ - 53					SP/LF/ Units
	↓ ↓ - 54					Units
15	F75-15-55		1x1 black ceramic tile w/grout and thinset	2nd floor Kitchen	G D SD	150 700
	↓ ↓ - 56					SP/LF/ Units
	↓ ↓ - 57					Units
16	F77-16-58	Conference Rm	9x9 Beige floor tile w/mastic	2nd floor Conference Rm Storage Area Meeting Rm Hallway	G D SD	2000
	↓ ↓ - 59	Hallway				SP/LF/ Units
	↓ ↓ - 60	Storage Rm				Units
17	HPS-17-61	Storage #2				
	HPS-17-62	Storage #2	Beige cement wall coating	2nd floor Walls 1st floor Walls (Could not make many holes)	G D SD	8,000
	↓ ↓ - 63	Hallway				SP/LF/ Units
17	↓ - 64	Storage #3				
	↓ - 65	Storage #3				
	↓ - 66	Storage #3	Hallway 1st floor			
17	↓ ↓ - 67	Storage #3	Hallway 1st floor			
	↓ - 68					
	↓ - 69					
18	F75-18-68	Stairwell	18x36 Green vinyl tile Stair tread w/mastic	Center Stairwell	G D SD	225
	↓ ↓ - 69					SP/LF/ Units
	↓ ↓ - 70					Units

¹ G = Good (no damage); D = Damaged (<10% distributed or <25% localized); or SD = Significantly Damaged (>10% distributed or >25% localized), F=Friable NF=Non-Friable

2525 00023



Asbestos Bulk Sample Log & Chain of Custody

Lab Use Only:

Lab Name: EMSK

Terracon Billing Office: *Betha Kugel*

Phone No. 225-305-9095

Page 5 of 5

HA	Sample Number	Sample Location	HA Description (Color, Dimensions, Descriptor, then Type)	HA General Location/Notes	Condition ¹ Friable? ²	Estimated Quantity
19	MA6-19-71	Exterior	Exterior Stucco	Exterior	Ⓞ ^D SD	4,800 SF/LF/ Units
	↓	Exterior			Y/N	
	↓	Exterior			Y/N	
20	MA2-20-74	Exterior	CMU Blocks w/mortar	Exterior	Ⓞ ^D SD	1,800 SF/LF/ Units
	↓	Exterior			Y/N	
	↓	Exterior			Y/N	
21	MA1-21-77	Exterior	Redbricks w/mortar	Exterior	Ⓞ ^D SD	3,800 SF/LF/ Units
	↓	Exterior			Y/N	
	↓	Exterior			Y/N	

¹ G = Good (no damage); D = Damaged (<10% distributed or <25% localized); or SD = Significantly Damaged (>10% distributed or >25% localized); F = Friable NF = Non-Friable



EMSL Analytical, Inc.

18369 Petroleum Drive Baton Rouge, LA 70809
Tel/Fax: (225) 755-1920 / (225) 755-1989
<http://www.EMSL.com/batonrougelab@emsl.com>

EMSL Order: 252500024
Customer ID: AQTE62
Customer PO: EH247233
Project ID:

Attention: Jerry Garms
Terracon Consultants, Inc.
2822 - B O'Neal Lane
Baton Rouge, LA 70816

Phone: (225) 305-9095
Fax: (225) 344-6346
Received Date: 12/17/2024 4:00 PM
Analysis Date: 12/19/2024
Collected Date: 12/13/2024

Project: St. Landry Bank/ EH247233

Test Report: Asbestos Analysis of Bulk Materials via AHERA Method 40CFR 763 Subpart E Appendix E supplemented with EPA 600/R-93/116 using Polarized Light Microscopy

Sample	Description	Appearance	Non-Asbestos		Asbestos
			% Fibrous	% Non-Fibrous	% Type
252500024-0001 PL3-22-80-Skim Coat	Restroom #2 - Hard Plaster (white) material over all cement walls + ceiling	White Non-Fibrous Homogeneous	HA: 22	100% Non-fibrous (Other)	None Detected
252500024-0001A PL3-22-80-Plaster	Restroom #2 - Hard Plaster (white) material over all cement walls + ceiling		HA: 22		Insufficient Material
252500024-0002 PL3-22-81-Skim Coat	Hallway 1st Floor - Hard Plaster (white) material over all cement walls + ceiling	White Non-Fibrous Homogeneous	HA: 22	100% Non-fibrous (Other)	None Detected
252500024-0002A PL3-22-81-Plaster	Hallway 1st Floor - Hard Plaster (white) material over all cement walls + ceiling	Tan Non-Fibrous Homogeneous	HA: 22	100% Non-fibrous (Other)	None Detected
252500024-0003 PL3-22-82-Skim Coat	Hallway 1st Floor - Hard Plaster (white) material over all cement walls + ceiling	White Non-Fibrous Homogeneous	HA: 22	100% Non-fibrous (Other)	None Detected
252500024-0003A PL3-22-82-Plaster	Hallway 1st Floor - Hard Plaster (white) material over all cement walls + ceiling		HA: 22		Insufficient Material
252500024-0004 PL3-22-83-Skim Coat	Small vault Area - Hard Plaster (white) material over all cement walls + ceiling	White Non-Fibrous Homogeneous	HA: 22	100% Non-fibrous (Other)	None Detected
252500024-0004A PL3-22-83-Plaster	Small vault Area - Hard Plaster (white) material over all cement walls + ceiling	Tan Non-Fibrous Homogeneous	HA: 22	100% Non-fibrous (Other)	None Detected
252500024-0005 PL3-22-84-Skim Coat	Hallway 2nd Floor - Hard Plaster (white) material over all cement walls + ceiling	White Non-Fibrous Homogeneous	HA: 22	100% Non-fibrous (Other)	None Detected
252500024-0005A PL3-22-84-Plaster	Hallway 2nd Floor - Hard Plaster (white) material over all cement walls + ceiling	Tan Non-Fibrous Homogeneous	HA: 22	100% Non-fibrous (Other)	None Detected

Initial report from: 01/09/2025 17:05:52



EMSL Analytical, Inc.

18369 Petroleum Drive Baton Rouge, LA 70809
Tel/Fax: (225) 755-1920 / (225) 755-1989
<http://www.EMSL.com / batonrougelab@emsl.com>

EMSL Order: 252500024
Customer ID: AQTE62
Customer PO: EH247233
Project ID:

Test Report: Asbestos Analysis of Bulk Materials via AHERA Method 40CFR 763 Subpart E Appendix E supplemented with EPA 600/R-93/116 using Polarized Light Microscopy

Sample	Description	Appearance	Non-Asbestos		Asbestos
			% Fibrous	% Non-Fibrous	% Type
PL3-22-85-Skim Coat 252500024-0006	Storage #1 2nd Floor - Hard Plaster (white) material over all cement walls + ceiling	White Non-Fibrous Homogeneous	HA: 22	100% Non-fibrous (Other)	None Detected
PL3-22-85-Plaster 252500024-0006A	Storage #1 2nd Floor - Hard Plaster (white) material over all cement walls + ceiling	Tan Non-Fibrous Homogeneous	HA: 22	100% Non-fibrous (Other)	None Detected
PL3-22-86-Skim Coat 252500024-0007	Hallway 2nd Floor - Hard Plaster (white) material over all cement walls + ceiling	White Non-Fibrous Homogeneous	HA: 22	100% Non-fibrous (Other)	None Detected
PL3-22-86-Plaster 252500024-0007A	Hallway 2nd Floor - Hard Plaster (white) material over all cement walls + ceiling	Tan Non-Fibrous Homogeneous	HA: 22	100% Non-fibrous (Other)	None Detected

Analyst(s)

Ariel Steib (6)
Bailey Gunter (6)

Martiana Beach, Laboratory Manager
or Other Approved Signatory

EMSL maintains liability limited to cost of analysis. Interpretation and use of test results are the responsibility of the client. This report relates only to the samples reported above, and may not be reproduced, except in full, without written approval by EMSL. EMSL bears no responsibility for sample collection activities or analytical method limitations. The report reflects the samples as received. Results are generated from the field sampling data (sampling volumes and areas, locations, etc.) provided by the client on the Chain of Custody. Samples are within quality control criteria and met method specifications unless otherwise noted. The above analyses were performed in general compliance with Appendix E to Subpart E of 40 CFR (previously EPA 600/M4-82-020 "Interim Method") but augmented with procedures outlined in the 1993 ("final") version of the method. This report must not be used by the client to claim product certification, approval, or endorsement by NVLAP, NIST or any agency of the federal government. Non-friable organically bound materials present a problem matrix and therefore EMSL recommends gravimetric reduction prior to analysis. Unless requested by the client, building materials manufactured with multiple layers (i.e. linoleum, wallboard, etc.) are reported as a single sample. Estimation of uncertainty is available on request.

Samples analyzed by EMSL Analytical, Inc. Baton Rouge, LA NVLAP Lab Code 200375-0, LELAP 01950, TX 300238

Initial report from: 01/09/2025 17:05:52

2525 00024



Asbestos Bulk Sample Log & Chain of Custody

Lab Use Only:

Lab Name: EMSC Terracon Billing Office: Boston College Phone No. 225-305-9095 Page 1 of 1

Project Name: St. Looney Bank Project Number: EH0470233 Project Manager: Jerry Gorms

Project Address: 101 N. 2nd Street City/State / Zip: Cambridge, MA Email Results To: Jerry.Gorms@terracon.com

Site/Building: Bank

HA	Sample Number	Sample Location	HA Description (Color, Dimensions, Descriptor, then Type)	HA General Location/Notes	Condition ¹	Friable? ²	Estimated Quantity
22	83-22-80	Restroom #2	Hard Plaster (White) material over all cement walls & ceiling	Throughout	G D SD	N	SF/LF/ Units
	-81	Hallway 1st floor					
	-82	Hallway 1st floor					
	-83	Small court area					
	-84	Hallway 2nd floor					
	-85	Storage #1 2nd floor					
22	-86	Hallway 2nd floor	G D SD	N	SF/LF/ Units		
22			G D SD	N	SF/LF/ Units		
22			G D SD	N	SF/LF/ Units		
22			G D SD	N	SF/LF/ Units		

Sampling Date: 12-13-24 Collected by (print): Jerry Gorms Inspector's Signature: [Signature]

Relinquished by: Jerry Gorms Date/Time: 12-17-24 Received by: [Signature] Date/Time: 12-17-24 2:00pm

Analysis: BB0025-60074-000006 - PLM 400 Point Count - TEM - Other

Turnaround Time: 6 Hrs - 24 Hrs - 2 Days - 5 Days - Other Positive Stop: Number of samples: _____

WALKIN

¹ G = Good (no damage); D = Damaged (<10% distributed or <2.5% localized); or SD = Significantly Damaged (>10% distributed or >25% localized); F = Friable NF = Non-Friable

**EMSL Analytical, Inc.**

18369 Petroleum Drive, Baton Rouge, LA, 70809
 Telephone: (225)-755-1920 Fax:(225)-755-1989
 EMSL-BR-25

EMSL Order ID: 252550008
LIMS Reference ID: PD50008
EMSL Customer ID: AQTE62

Attention: Jerry Garms
 Terracon Consultants, Inc. [AQTE62]
 2822 - B O'Neal Lane
 Baton Rouge, LA 70816
 (225) 305-9095
 Jerry.Garms@terracon.com

Project Name: EH247233

Customer PO:
EMSL Sales Rep: Jason McDonald
Received: 12/16/2024 00:00
Reported: 01/06/2025 16:46

Analytical Results

Analyte	Results	RL	Weight(g)	Prep Date & Tech	Prep Method	Analysis Date & Analyst	Analytical Method	Q	DF
Client Sample ID: Pb-1/Dark Beige - Metal Doorframe							Date Sampled: 12/13/24		
Matrix: Chips							LIMS Reference ID: PD50008-01		
Lead	0.32 % wt	0.006 % wt	0.2521	01/06/25 MzB	SW-846 3050B	01/06/25 MzB	SW 846-7000B	1	
Sample Comments:									
Client Sample ID: Pb-2/Green - cement - wall							Date Sampled: 12/13/24		
Matrix: Chips							LIMS Reference ID: PD50008-02		
Lead	0.29 % wt	0.006 % wt	0.253	01/06/25 MzB	SW-846 3050B	01/06/25 MzB	SW 846-7000B	1	
Sample Comments:									
Client Sample ID: Pb-3/Grey - cement - wall							Date Sampled: 12/13/24		
Matrix: Chips							LIMS Reference ID: PD50008-03		
Lead	0.039 % wt	0.006 % wt	0.2518	01/06/25 MzB	SW-846 3050B	01/06/25 MzB	SW 846-7000B	1	
Sample Comments:									
Client Sample ID: Pb-4/Beige - Metal - Doorframe							Date Sampled: 12/13/24		
Matrix: Chips							LIMS Reference ID: PD50008-04		
Lead	0.089 % wt	0.006 % wt	0.2531	01/06/25 MzB	SW-846 3050B	01/06/25 MzB	SW 846-7000B	1	
Sample Comments:									
Client Sample ID: Pb-5/Green - Metal - Doorframe							Date Sampled: 12/13/24		
Matrix: Chips							LIMS Reference ID: PD50008-05		
Lead	0.077 % wt	0.008 % wt	0.2091	01/06/25 MzB	SW-846 3050B	01/06/25 MzB	SW 846-7000B	1	
Sample Comments:									
Client Sample ID: Pb-6/Green - cement - wall							Date Sampled: 12/13/24		
Matrix: Chips							LIMS Reference ID: PD50008-06		
Lead	0.14 % wt	0.006 % wt	0.252	01/06/25 MzB	SW-846 3050B	01/06/25 MzB	SW 846-7000B	1	
Sample Comments:									



EMSL Analytical, Inc.

18369 Petroleum Drive, Baton Rouge, LA, 70809
Telephone: (225)-755-1920 Fax:(225)-755-1989
EMSL-BR-25

EMSL Order ID: 252550008
LIMS Reference ID: PD50008
EMSL Customer ID: AQTE62

Attention: Jerry Garms
Terracon Consultants, Inc. [AQTE62]
2822 - B O'Neal Lane
Baton Rouge, LA 70816
(225) 305-9095
Jerry.Garms@terracon.com

Project Name: EH247233

Customer PO:
EMSL Sales Rep: Jason McDonald
Received: 12/16/2024 00:00
Reported: 01/06/2025 16:46

Certified Analyses included in this Report

Analyte	Certifications
SW 846-7000B in Chips	
Lead	25-A2LA Lead and Micro,25-LA (LELAP)

List of Certifications

Code	Description	Number	Expires
25-LA (LELAP)	Lead, Fungi, PCM. TEM, PLM	01950	06/30/2025
25-A2LA Lead and Micro	A2LA for Environmental Lead and Micro	2845.03	03/31/2025

Please see the specific Field of Testing (FOT) on www.emsl.com for a complete listing of parameters for which EMSL is certified.

Notes and Definitions

Item	Definition
(Dig)	For metals analysis, sample was digested.
[2C]	Reported from the second channel in dual column analysis.
DF	Dilution Factor
MDL	Method Detection Limit.
ND	Analyte was NOT DETECTED at or above the detection limit.
NR	Spike/Surrogate showed no recovery.
Q	Qualifier
RL	Reporting Limit
Wet	Sample is not dry weight corrected.

Measurement of uncertainty and any applicable definitions of method modifications are available upon request. Per EPA NLLAP policy, sample results are not blank corrected.

Martiana Beach Laboratory Manager or other approved signatory

EMSL maintains liability limited to cost of analysis. Interpretation and use of test results are the responsibility of the client. This report relates only to the samples reported above and may not be reproduced, except in full, without written approval by EMSL. EMSL bears no responsibility for sample collection activities or analytical method limitations. The report reflects the samples as received. Results are generated from the field sampling data (sampling volumes and areas, locations, etc.) provided by the client on the Chain of Custody. QC sample results are within quality control criteria and met method specifications unless otherwise noted. All results for soil samples are reported on a dry weight basis, unless otherwise noted.

Analysis following EMSL SOP for the Determination of Environmental Lead by FLAA. The laboratory has a reporting limit of 0.008% by wt., based upon a minimum sample weight of 0.25g submitted to the lab, and is not responsible for any result or reporting limit provided in mg/cm2 since it is dependent upon an area value provided by non-lab personnel. A "<" (less than) result signifies that the analyte was not detected at or above the reporting limit. Measurement of uncertainty and definitions of modifications are available upon request. Results in this report are not blank corrected unless specified.



Lead Chain of Custody

EMSL Order Number / Lab Use Only

EMSL Analytical, Inc.
18369 Petroleum Drive
Baton Rouge, LA 70809

PHONE: (225) 755-1920

EMAIL: batonrougelab@emsl.com

EMSL ANALYTICAL, INC.
TESTING LABS • PRODUCTS • TRAINING

PD50008/25055008

Customer ID:		Billing ID:	
Company Name: <u>Terracon</u>		Company Name:	
Contact Name: <u>Jerry Garms</u>		Billing Contact:	
Street Address: <u>8825 O'Neal Lane</u>		Street Address: <u>SAME</u>	
City, State, Zip: <u>Baton Rouge, La 70816</u> Country: <u>U.S.A.</u>		City, State, Zip:	
Phone: <u>225-305-9095</u>		Phone:	
Email(s) for Report: <u>jerry.garms@terracon.com</u>		Email(s) for Invoice:	

Project Name/No: <u>EH24233</u>		Purchase Order:	
EMSL LIMS Project ID: (If applicable, EMSL will provide)		US State where samples collected: <u>LA</u> State of Connecticut (CT) must select project location: <input type="checkbox"/> Commercial (Taxable) <input type="checkbox"/> Residential (Non-Taxable)	
Sampled By Name: <u>Jerry Garms</u>		Sampled By Signature: <u>[Signature]</u>	

Turn-Around-Time (TAT)

3 Hour 6 Hour 24 Hour 32 Hour 48 Hour 72 Hour 96 Hour 1 Week 2 Week

Please call ahead for large projects and/or turnaround times 6 Hours or Less. *32 Hour TAT available for select tests only; samples must be submitted by 11:30am.

MATRIX	METHOD	INSTRUMENT	REPORTING LIMIT	SELECTION
CHIPS <input checked="" type="checkbox"/> by wt. <input type="checkbox"/> ppm (mg/kg) <input type="checkbox"/> mg/cm ²	SW 846-7000B	Flame Atomic Absorption	0.008% (80ppm)	<input checked="" type="checkbox"/>
Reporting Limit based on a minimum 0.25g sample weight	SW 846-6010D	ICP-OES	0.0004% (4ppm)	<input type="checkbox"/>
AIR	NIOSH 7082	Flame Atomic Absorption	4µg/filter	<input type="checkbox"/>
	NIOSH 7300M / NIOSH 7303M	ICP-OES	0.5µg/filter	<input type="checkbox"/>
	NIOSH 7300M / NIOSH 7303M	ICP-MS	0.05µg/filter	<input type="checkbox"/>
WIPE <input type="checkbox"/> ASTM <input type="checkbox"/> NON-ASTM	SW 846-7000B	Flame Atomic Absorption	10µg/wipe	<input type="checkbox"/>
If no box is checked, non-ASTM Wipe is assumed	SW 846-6010D	ICP-OES	1.0µg/wipe	<input type="checkbox"/>
TCLP	SW 846-1311 / 7000B / SM 3111B	Flame Atomic Absorption	0.4 mg/L (ppm)	<input type="checkbox"/>
	SW 846-1311 / SW 846-6010D*	ICP-OES	0.1 mg/L (ppm)	<input type="checkbox"/>
SPLP	SW 846-1312 / 7000B / SM 3111B	Flame Atomic Absorption	0.4 mg/L (ppm)	<input type="checkbox"/>
	SW 846-1312 / SW 846-6010D*	ICP-OES	0.1 mg/L (ppm)	<input type="checkbox"/>
TTLIC	22 CCR App. II, 7000B	Flame Atomic Absorption	40mg/kg (ppm)	<input type="checkbox"/>
	22 CCR App. II, SW 846-6010D*	ICP-OES	2mg/kg (ppm)	<input type="checkbox"/>
STLC	22 CCR App. II, 7000B	Flame Atomic Absorption	0.4 mg/L (ppm)	<input type="checkbox"/>
	22 CCR App. II, SW 846-6010D*	ICP-OES	0.1 mg/L (ppm)	<input type="checkbox"/>
Soil	SW 846-7000B	Flame Atomic Absorption	40mg/kg (ppm)	<input type="checkbox"/>
	SW 846-6010D*	ICP-OES	2mg/kg (ppm)	<input type="checkbox"/>
SM 3111B / SW 846-7000B	Flame Atomic Absorption	0.4 mg/L (ppm)	<input type="checkbox"/>	
Wastewater	EPA 200.7	ICP-OES	0.020 mg/L (ppm)	<input type="checkbox"/>
Unpreserved <input type="checkbox"/>	EPA 200.5	ICP-OES	0.003 mg/L (ppm)	<input type="checkbox"/>
Preserved with HNO3 <input type="checkbox"/> PH<2	EPA 200.8	ICP-MS	0.001 mg/L (ppm)	<input type="checkbox"/>
Drinking Water	40 CFR Part 50	ICP-OES	12 µg/filter	<input type="checkbox"/>
Unpreserved <input type="checkbox"/>				<input type="checkbox"/>
Preserved with HNO3 <input type="checkbox"/> PH<2				<input type="checkbox"/>
TSP/SPM Filter				<input type="checkbox"/>
Other:				<input type="checkbox"/>

Sample Number	Sample Location	Volume / Area	Date / Time Sampled
Pb-1	Dark Beige - Metal - Doorframe		12-13-24
Pb-2	Green - cement - Wall		
Pb-3	Grey - cement - wall		
Pb-4	Beige - Metal - Doorframe		
Pb-5	Green - Metal - Doorframe		

Method of Shipment:		Sample Condition Upon Receipt:	
Relinquished by: <u>[Signature]</u>	Date/Time: <u>12-13-24</u>	Received by: <u>[Signature]</u>	Date/Time: <u>12/16/24 8:30 AM</u>
Relinquished by: <u>[Signature]</u>	Date/Time:	Received by:	Date/Time:

Controlled Document - COC-25 Lead R16 4/19/2021

*6010C Available Upon Request

AGREE TO ELECTRONIC SIGNATURE (By checking, I consent to signing this Chain of Custody document by electronic signature.)

EMSL Analytical, Inc.'s Laboratory Terms and Conditions are incorporated into this Chain of Custody by reference in their entirety. Submission of samples to EMSL Analytical, Inc. acceptance and acknowledgment of all terms and conditions by Customer.

Prophet



EMSL ANALYTICAL, INC.
TESTING LABS • PRODUCTS • TRAINING

Lead Chain of Custody

EMSL Order Number / Lab Use Only

EMSL Analytical, Inc.
18369 Petroleum Drive
Baton Rouge, LA 70809

PHONE: (225) 755-1920

EMAIL: batonrougelab@emsl.com

PP 50008 | 252550008

Customer ID:		Billing ID:		
Company Name: Terracon		Company Name:		
Contact Name: Jerry Garms		Billing Contact:		
Street Address: 8825 O'Neal Lane		Street Address: SAME		
City, State, Zip: Baton Rouge, La 70816 Country: U.S.A.		City, State, Zip:		
Phone: 225-305-9095		Phone:		
Email(s) for Report: jerry.garms@terracon.com		Email(s) for Invoice:		
Project Information				
Project Name/No: EH247233		Purchase Order:		
EMSL LIMS Project ID: (If applicable, EMSL will provide)		US State where samples collected: LA State of Connecticut (CT) must select project location: <input type="checkbox"/> Commercial (Taxable) <input type="checkbox"/> Residential (Non-Taxable)		
Sampled By Name: Jerry Garms		Sampled By Signature: <i>[Signature]</i>		
Turn-Around-Time (TAT) <input type="checkbox"/> 3 Hour <input type="checkbox"/> 6 Hour <input type="checkbox"/> 24 Hour <input type="checkbox"/> 32 Hour <input type="checkbox"/> 48 Hour <input checked="" type="checkbox"/> 72 Hour <input type="checkbox"/> 96 Hour <input type="checkbox"/> 1 Week <input type="checkbox"/> 2 Week				
Please call ahead for large projects and/or turnaround times 6 Hours or Less. *32 Hour TAT available for select tests only; samples must be submitted by 11:30am.				
MATRIX	METHOD	INSTRUMENT	REPORTING LIMIT	SELECTION
CHIPS <input checked="" type="checkbox"/> % by wt. <input type="checkbox"/> ppm (mg/kg) <input type="checkbox"/> mg/cm ²	SW 846-7000B	Flame Atomic Absorption	0.008% (80ppm)	<input checked="" type="checkbox"/> <i>MM</i>
Reporting Limit based on a minimum 0.25g sample weight	SW 846-6010D	ICP-OES	0.0004% (4ppm)	<input type="checkbox"/>
AIR	NIOSH 7082	Flame Atomic Absorption	4µg/filter	<input type="checkbox"/>
	NIOSH 7300M / NIOSH 7303M	ICP-OES	0.5µg/filter	<input type="checkbox"/>
	NIOSH 7300M / NIOSH 7303M	ICP-MS	0.05µg/filter	<input type="checkbox"/>
WIPE <input type="checkbox"/> ASTM <input type="checkbox"/> NON-ASTM	SW 846-7000B	Flame Atomic Absorption	10µg/wipe	<input type="checkbox"/>
If no box is checked, non-ASTM Wipe is assumed	SW 846-6010D	ICP-OES	1.0µg/wipe	<input type="checkbox"/>
TCLP	SW 846-1311 / 7000B / SM 3111B	Flame Atomic Absorption	0.4 mg/L (ppm)	<input type="checkbox"/>
	SW 846-1311 / SW 846-6010D*	ICP-OES	0.1 mg/L (ppm)	<input type="checkbox"/>
SPLP	SW 846-1312 / 7000B / SM 3111B	Flame Atomic Absorption	0.4 mg/L (ppm)	<input type="checkbox"/>
	SW 846-1312 / SW 846-6010D*	ICP-OES	0.1 mg/L (ppm)	<input type="checkbox"/>
TTLIC	22 CCR App. II, 7000B	Flame Atomic Absorption	40mg/kg (ppm)	<input type="checkbox"/>
	22 CCR App. II, SW 846-6010D*	ICP-OES	2mg/kg (ppm)	<input type="checkbox"/>
STLC	22 CCR App. II, 7000B	Flame Atomic Absorption	0.4 mg/L (ppm)	<input type="checkbox"/>
	22 CCR App. II, SW 846-6010D*	ICP-OES	0.1 mg/L (ppm)	<input type="checkbox"/>
Soil	SW 846-7000B	Flame Atomic Absorption	40mg/kg (ppm)	<input type="checkbox"/>
	SW 846-6010D*	ICP-OES	2mg/kg (ppm)	<input type="checkbox"/>
Wastewater	SM 3111B / SW 846-7000B	Flame Atomic Absorption	0.4 mg/L (ppm)	<input type="checkbox"/>
Unpreserved <input type="checkbox"/>	EPA 200.7	ICP-OES	0.020 mg/L (ppm)	<input type="checkbox"/>
Preserved with HNO3 <input type="checkbox"/> PH<2	EPA 200.5	ICP-OES	0.003 mg/L (ppm)	<input type="checkbox"/>
Drinking Water	EPA 200.8	ICP-MS	0.001 mg/L (ppm)	<input type="checkbox"/>
Unpreserved <input type="checkbox"/>	40 CFR Part 50	ICP-OES	12 µg/filter	<input type="checkbox"/>
Preserved with HNO3 <input type="checkbox"/> PH<2				<input type="checkbox"/>
TSP/SPM Filter				<input type="checkbox"/>
Other:				<input type="checkbox"/>
				<input type="checkbox"/>
Sample Number	Sample Location	Volume / Area	Date / Time Sampled	
	Pb-6 Green - Cement - wall		12-13-24	
Method of Shipment:		Sample Condition Upon Receipt:		
Relinquished by: <i>[Signature]</i>	Date/Time: 12-13-24	Received by: * see first page	Date/Time:	
Relinquished by:	Date/Time:	Received by:	Date/Time:	

Controlled Document - COC-25 Lead R16 4/19/2021

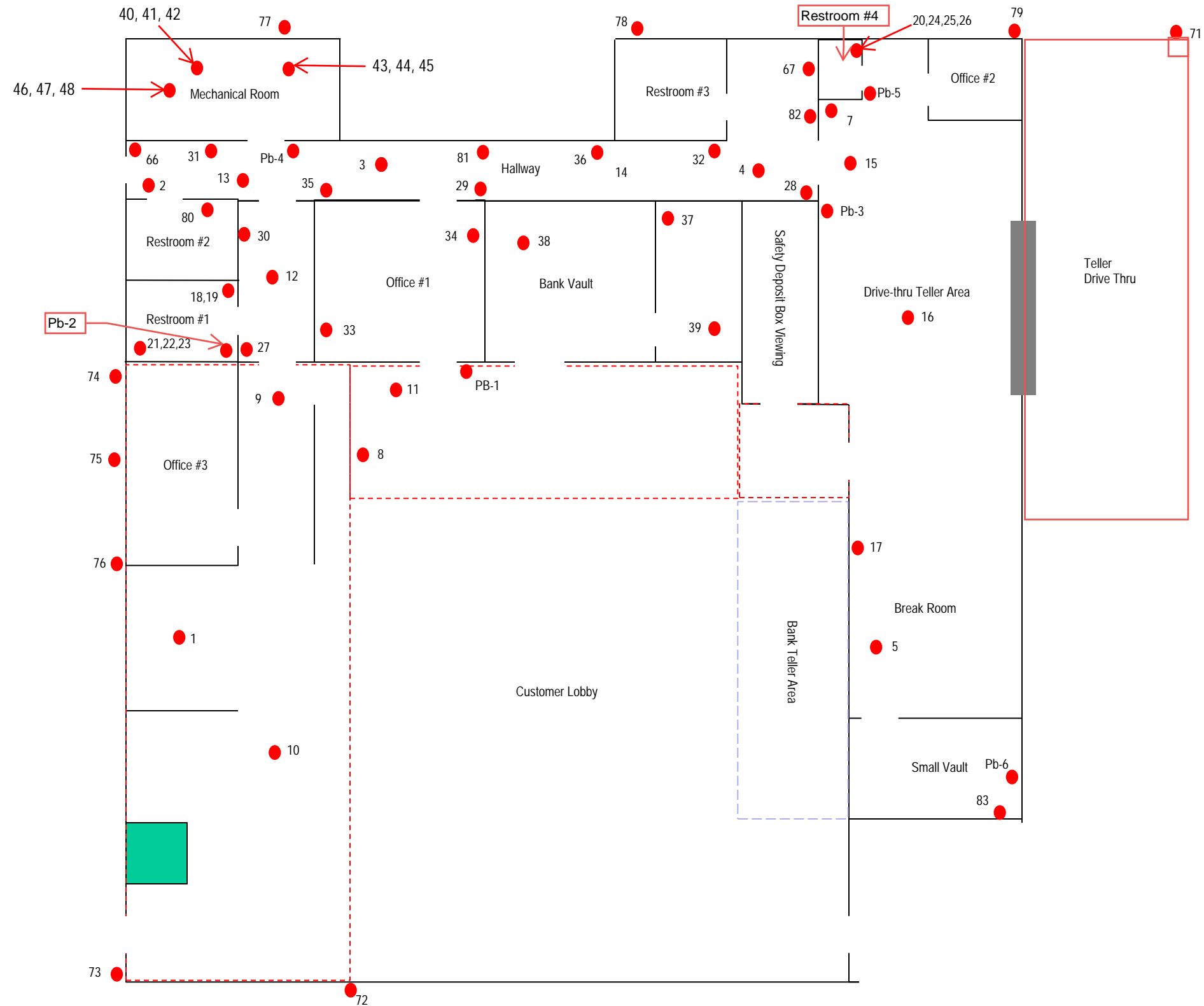
*6010C Available Upon Request

AGREE TO ELECTRONIC SIGNATURE (By checking, I consent to signing this Chain of Custody document by electronic signature.)

EMSL Analytical, Inc.'s Laboratory Terms and Conditions are incorporated into this Chain of Custody by reference in their entirety. Submission of samples to EMSL Analytical, acceptance and acknowledgment of all terms and conditions by Customer.

APPENDIX C

EXHIBITS



- Carpeted area
- Drive-thru Teller Area
- Stairs to 2nd Floor

DIAGRAM IS FOR GENERAL LOCATION ONLY, AND IS NOT INTENDED FOR CONSTRUCTION PURPOSES

Project Manager: JG	Project No.: EH247233
Drawn by: JG	Scale: NTS
Checked by: JD	File Name:
Approved by: JD	Date: Dec. 2024



2822 O'Neal Lane Building B
Baton Rouge, Louisiana 70816
PH. (225) 239 2636

1st Floor Sample Location Map

St. Landry Bank – Eunice Branch
101 North 2nd Street
Eunice, LA

Figure

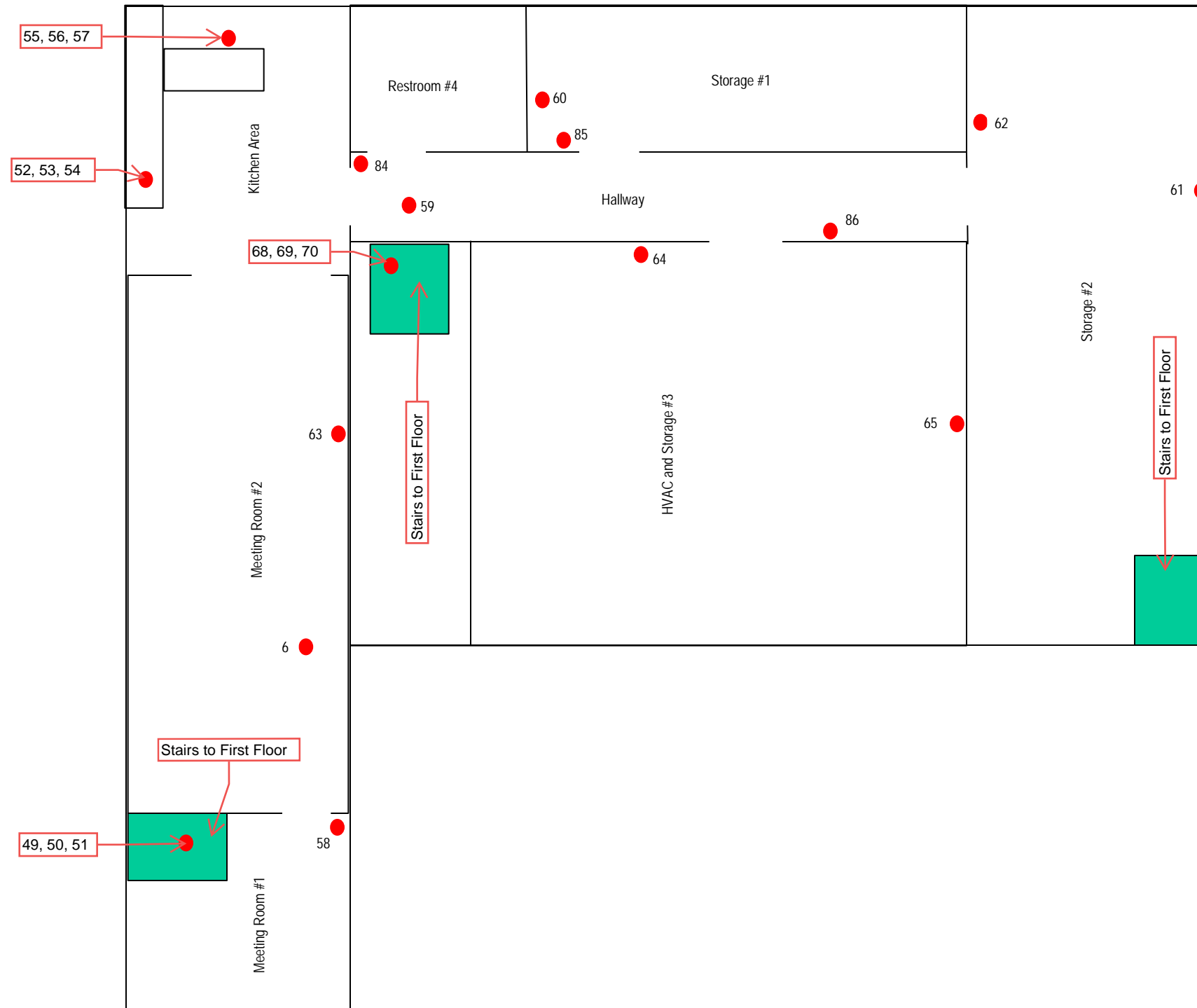


DIAGRAM IS FOR GENERAL LOCATION ONLY, AND IS NOT INTENDED FOR CONSTRUCTION PURPOSES

Project Manager:	JG	Project No.:	EH247233
Drawn by:	JG	Scale:	NTS
Checked by:	JD	File Name:	
Approved by:	JD	Date:	Dec. 2024



2822 O'Neal Lane Building B
Baton Rouge, Louisiana 70816
PH. (225) 239 2636

2nd Floor Sample Location Map

St. Landry Bank – Eunice Branch
101 North 2nd Street
Eunice, LA

Figure

APPENDIX D

PHOTOGRAPH LOG



Photo 1 HA-1: White popcorn ceiling



Photo 2 HA-2: Yellow carpet mastic



Photo 3 HA-3: 9"x9" White and beige floor tile with black mastic

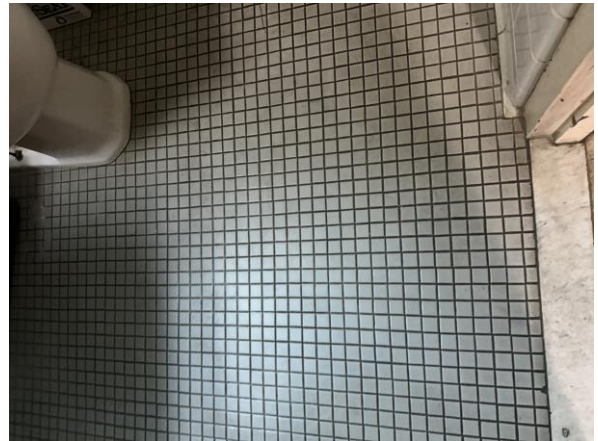


Photo 4 HA-4: 1"x1" Green ceramic floor tile with grout



Photo 5 HA-5: 3.5"x3.5" Green ceramic wall tile with grout



Photo 6 HA-7: 4" Brown cove base with mastic



Photo 7 HA-8: Beige and white striped wallpaper



Photo 8 HA-9: 9"x9" Grey and white floor tile with black mastic



Photo 9 HA-10: Black asphalt patching at pipe connection joints



Photo 10 HA-11: Grey and white plaster patching at connection points



Photo 11 HA-12: Black HVAC seal



Photo 12 HA-13: Yellow carpet mastic (stairwells)



Photo 13 HA-17: Beige cement wall coating



Photo 14 HA-19: Exterior stucco



Photo 15 HA-20: CMU blacks and mortar



Photo 16 HA-21: Red bricks and grey mortar



Photo 17 HA-22: Hard plaster material skim coat over cement walls

Asbestos Inspection and Lead-Containing Paint Screening Report
St. Landry Bank – Eunice Branch ■ Eunice, LA
Photos Taken: December 13, 2024 ■ Terracon Project No. EH247233



APPENDIX E

LICENSES AND CERTIFICATIONS

STATE OF LOUISIANA
DEPARTMENT OF ENVIRONMENTAL QUALITY

certifies that

Jeremiah A Garms

Has complied with all requirements of the Louisiana Department of Environmental Quality
and is authorized to perform the duties of

Asbestos Inspector

Accreditation No. NI140570

AI No. 140570

Date of Issuance November 7, 2024

Expiration November 17, 2025

Failure to comply with all applicable provisions of La. R.S. 2025.E. (1)(a) and La. R.S. 2025.F. (2)(a)
may result in civil and/or criminal enforcement actions by the State.

Charles Finley

Permit Support Services Division
Office of Environmental Services

LOUISIANA

STATE OF LOUISIANA
DEPARTMENT OF ENVIRONMENTAL QUALITY

certifies that

Jeremiah A Garms

Has complied with all requirements of the Louisiana Department of Environmental Quality
and is authorized to perform the duties of

Lead Risk Assessor

Accreditation No. MR140570

AI No. 140570

Date of Issuance March 12, 2024

Expiration March 8, 2025

Failure to comply with all applicable provisions of La. R.S. 2025.E. (1)(a) and La. R.S. 2025.F. (2)(a)
may result in civil and/or criminal enforcement actions by the State.

Charles Finley

Public Participation & Permit Support Division
Office of Environmental Services



STATE OF LOUISIANA
DEPARTMENT OF ENVIRONMENTAL QUALITY



Is hereby granting a Louisiana Environmental Laboratory Accreditation to

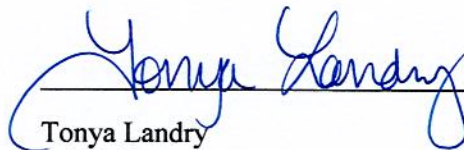
EMSL Analytical Inc
18369 Petroleum Dr
Baton Rouge, Louisiana 70809

Agency Interest No. 205208
Activity No. ACC20220001

According to the Louisiana Administrative Code, Title 33, Part I, Subpart 3, LABORATORY ACCREDITATION, the State of Louisiana formally recognizes that this laboratory is technically competent to perform the environmental analyses listed on the scope of accreditation detailed in the attachment.

The laboratory agrees to perform all analyses listed on this scope of accreditation according to the Part I, Subpart 3 requirements and acknowledges that continued accreditation is dependent on successful ongoing compliance with the applicable requirements of Part I. Please contact the Department of Environmental Quality, Louisiana Environmental Laboratory Accreditation Program (LELAP) to verify the laboratory's scope of accreditation and accreditation status.

Accreditation by the State of Louisiana is not an endorsement or a guarantee of validity of the data generated by the laboratory. Accreditation of the environmental laboratory does not imply that a product, process, system, or person is approved by LELAP. To be accredited initially and maintain accreditation, the laboratory agrees to participate in two single-blind, single-concentration PT studies, where available, per year for each field of testing for which it seeks accreditation or maintains accreditation as required in LAC 33:I.4711.



Tonya Landry
Administrator
Public Participation and Permit Support Division

Issued Date: 6/11/2024
Effective Date: July 1, 2024
Expiration Date: June 30, 2025
Certificate Number: 01950



STATE OF LOUISIANA
DEPARTMENT OF ENVIRONMENTAL QUALITY

Effective Date: July 1, 2024

18369 Petroleum Dr, Baton Rouge, Louisiana 70809

Certificate Number: 01950

EMSL Analytical Inc
AI Number: 205208
Activity No. ACC20220001
Expiration Date: June 30, 2025

Air Emissions

Analyte	Method Name	Method Code	Type	AB
1520 - Asbestos	40 CFR Part 763, Subpart E, Appendix A (Mandatory TEM)	2062	ISO 17025	NVLAP
100683 - Fungal - Direct Examination (Air)	EMSL Micro-SOP-201	9321	State	A2LA
1075 - Lead	NIOSH 7082, Rev.2	90012230	State	A2LA

Non Potable Water

Analyte	Method Name	Method Code	Type	AB
NONE	NONE	NONE	NONE	NONE

Solid Chemical Materials

Analyte	Method Name	Method Code	Type	AB
100095 - Asbestos in Bulk Insulation	40 CFR 763, Subpart E, Appendix E (Section 1.PLM)	2004	ISO 17025	NVLAP
100681 - Fungal - Direct Examination (Bulk)	EMSL Micro-SOP-200	9322	State	A2LA
100682 - Fungal - Direct Examination (Surface)	EMSL Micro-SOP-200	9322	State	A2LA
1075 - Lead	EPA 3050	10135203	NLLAP	A2LA
1075 - Lead	EPA 7000	10157401	NLLAP	A2LA
1520 - Asbestos	EPA 600/R-93/116	10294583	ISO 17025	NVLAP

Biological Tissue

Analyte	Method Name	Method Code	Type	AB
NONE	NONE	NONE	NONE	NONE

United States Department of Commerce
National Institute of Standards and Technology



Certificate of Accreditation to ISO/IEC 17025:2017

NVLAP LAB CODE: 200375-0

EMSL Analytical, Inc.
Baton Rouge, LA

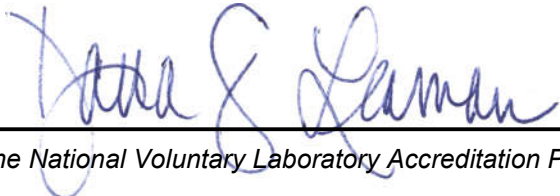
*is accredited by the National Voluntary Laboratory Accreditation Program for specific services,
listed on the Scope of Accreditation, for:*

Asbestos Fiber Analysis

*This laboratory is accredited in accordance with the recognized International Standard ISO/IEC 17025:2017.
This accreditation demonstrates technical competence for a defined scope and the operation of a laboratory quality
management system (refer to joint ISO-ILAC-IAF Communique dated January 2009).*

2024-01-01 through 2024-12-31

Effective Dates



For the National Voluntary Laboratory Accreditation Program

SCOPE OF ACCREDITATION TO ISO/IEC 17025:2017

EMSL Analytical, Inc.

18369 Petroleum Drive

Baton Rouge, LA 70809

Martiana Beach

Phone: 225-755-1920

Email: mbeach@emsl.com

<http://www.emsl.com>

ASBESTOS FIBER ANALYSIS

NVLAP LAB CODE 200375-0

Bulk Asbestos Analysis

Code

Description

18/A01

EPA -- 40 CFR Appendix E to Subpart E of Part 763, Interim Method of the Determination of Asbestos in Bulk Insulation Samples

18/A03

EPA 600/R-93/116: Method for the Determination of Asbestos in Bulk Building Materials

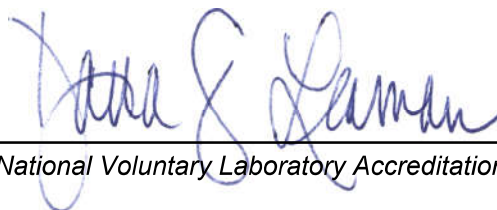
Airborne Asbestos Analysis

Code

Description

18/A02

U.S. EPA's "Interim Transmission Electron Microscopy Analytical Methods-Mandatory and Nonmandatory-and Mandatory Section to Determine Completion of Response Actions" as found in 40 CFR, Part 763, Subpart E, Appendix A.



For the National Voluntary Laboratory Accreditation Program