



**CENTRALBIDDING**  
FROM CENTRAL AUCTION HOUSE

**13-26 -- Lakeshore Elementary Office Renovation and Canopy**  
Ouachita Parish School Board

Project documents obtained from [www.CentralBidding.com](http://www.CentralBidding.com)

15-Jan-2026 11:43:45 AM



## ADDENDUM No. 1

Date: January 14th, 2026

Project: **Lakeshore Elementary School Canopy Additions and Main Office Renovations**

### NOTICE TO CONTRACTORS

The following does hereby become a part of the Contract Documents and all provisions of the Documents shall apply to the changes. Include related changes throughout the various drawings and all sections of the specifications, which would result from these changes.

GENERAL CONTRACTORS ARE ADVISED TO NOTIFY ALL AFFECTED SUBCONTRACTORS OF CHANGES INVOLVED IN THE FOLLOWING ADDENDUM AS THIS OFFICE DOES NOT HAVE A COMPLETE RECORD OF ALL SUBCONTRACTORS, FIGURING THIS WORK.

GENERAL:

GENERAL NOTES:

1. The bid date has changed to January 27<sup>th</sup>. Bids will be opened at 2pm at the Ouachita Parish School Board.
2. See cut sheet for V- Groove Spruce Board as basis of design for the wood slat wall below. Provide Moelven or equal.
3. All plastic laminate-faced architectural cabinets will be a frameless flush overlay construction as per the specifications.
4. Provide porcelain cove tile base at all restrooms with porcelain floor tile. Schluter trim will not be used in this project.
5. The cove base and porcelain wall tile will both be unpolished.
6. Provide a marble threshold at all porcelain tile floor transitions. Provide Daltile or equal, architect to select color from manufacturer's full range.
7. See below for addenda sheet 'ADD 1.01' for a detail of the ADA ramp
8. Sheets SP1.01, D1.01, A.103, A2.01, A3.01, A4.01, and A5.01 have been replaced.
9. Remove, store, and reinstall existing ACT ceiling and grid in Existing Corridor 122 for new gypsum board with wall graphic. Protect existing ceiling during construction.
10. See Pre-Bid Sign in sheet below.
11. See MEP Addenda items below.
12. Impact-resistant gypsum board is only required at CWG-4.
13. Provide wall types and heights as tagged and specified on LS1.02 and LS1.03.
14. The existing double layer of gypsum board at wall type D is assumed to be present based on the existing building documents. Field verification is required during construction.
15. Provide Custom Digital Wallcoverings per the specifications, the architect will provide reference photos for the manufacturer to produce the digital image used for the graphic. The manufacturer will need to format the image and adjust the image to the designer's requests, which can be, but is not limited to: color adjustments, size adjustments, and filter adjustments.

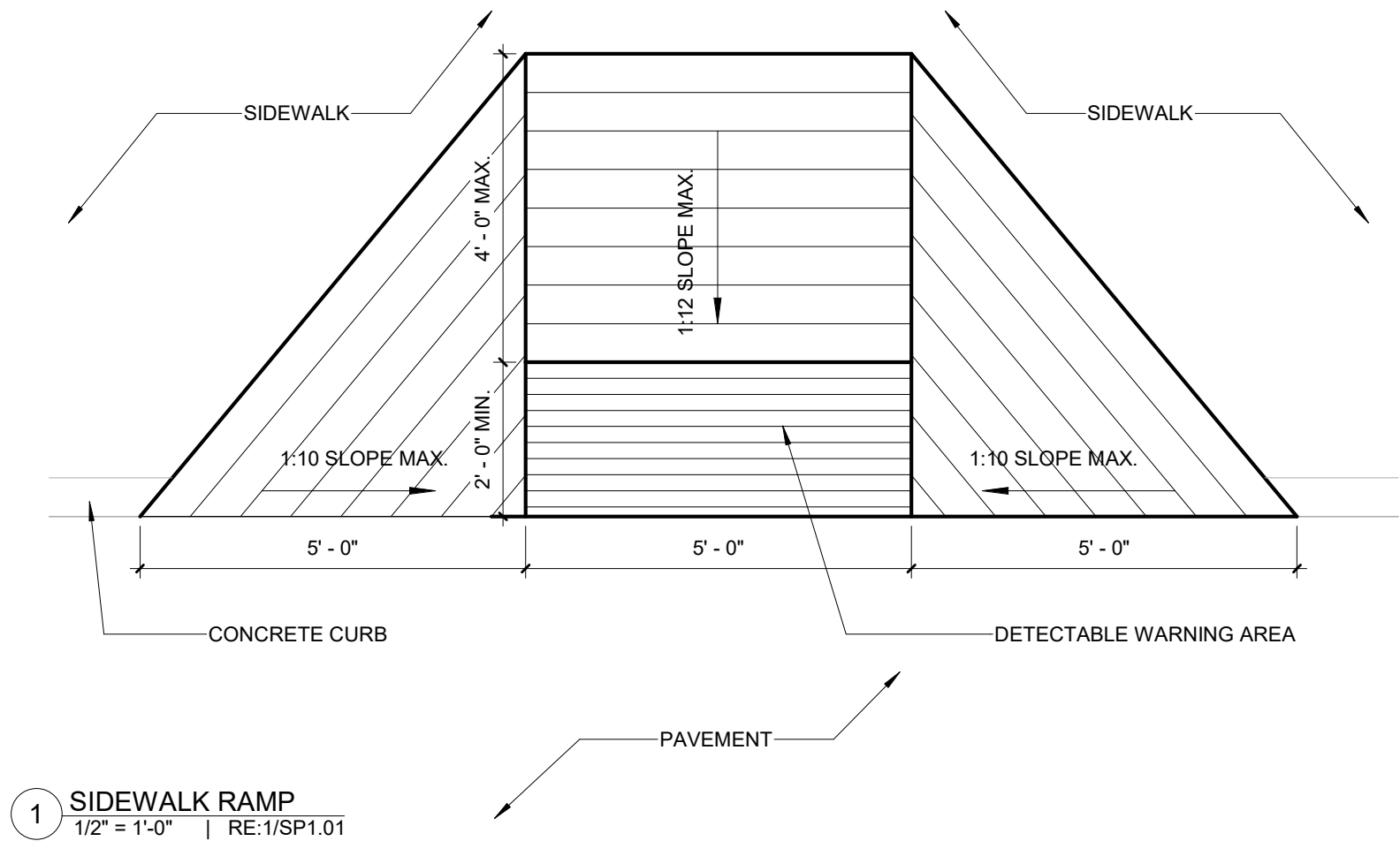


**APPROVED EQUALS:**

The products listed below are approved bidding but must comply with the project specifications. It is the suppliers/manufactures responsibility to submit products for approval that are equal to or better than shown in the specifications. No verbal approvals will be allowed. Note that prior approvals are based on limited, cursory review of information sent by multiple manufacturers. The contractor is cautioned that the prior approval for bidding does not guarantee final acceptance during construction. A more thorough review will be conducted during shop drawing review:

Section  
075419

Manufacturer  
Soprema PVC Roofing



1 SIDEWALK RAMP  
1/2" = 1'-0" | RE:1/SP1.01

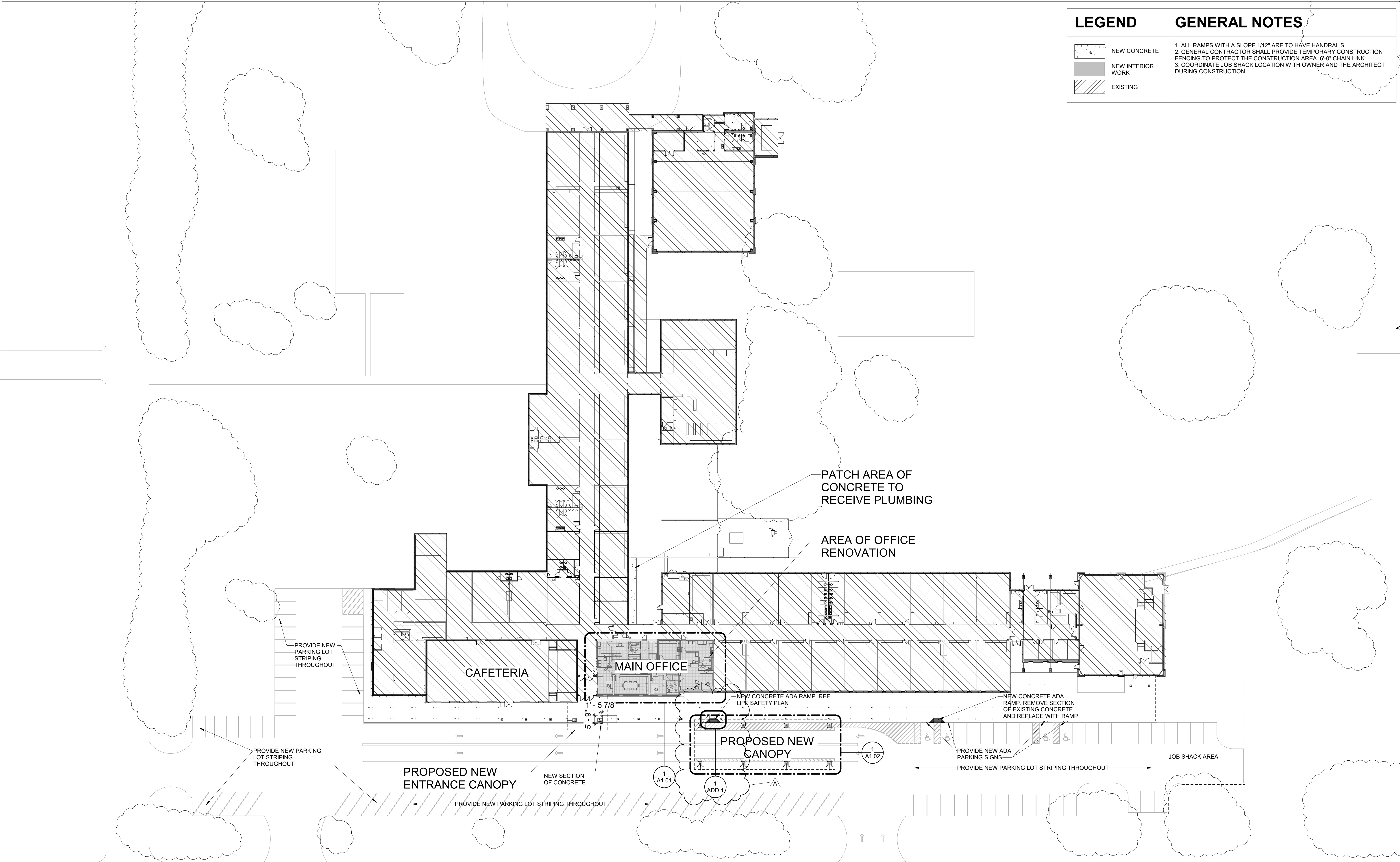
Timothy M. Brandon  
Architect APC  
103 Cypress Street  
West Monroe, LA 71291  
Tel. 318.340.1550  
Fax. 318.998.1315  
www.tbastudio.com

TBA

DRAWN BY: GS  
Date: 1/12/2026  
Project No.: 25-WM0039  
Checked By: CW

SHEET ADD 1.01  
DESCRIPTION:  
RAMP DETAIL





## LEGEND

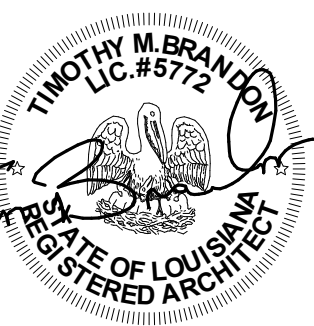
|  |                   |
|--|-------------------|
|  | NEW CONCRETE      |
|  | NEW INTERIOR WORK |
|  | EXISTING          |

## GENERAL NOTES

1. ALL RAMPS WITH A SLOPE 1/12" ARE TO HAVE HANDRAILS.
2. GENERAL CONTRACTOR SHALL PROVIDE TEMPORARY CONSTRUCTION FENCING TO PROTECT THE CONSTRUCTION AREA. 6'-0" CHAIN LINK
3. COORDINATE JOB SHACK LOCATION WITH OWNER AND THE ARCHITECT DURING CONSTRUCTION.

TBA STUDIO  
ARCHITECTURE  
103 Cypress Street  
West Monroe, LA 71291  
Tel. 318.340.1550  
Fax. 318.998.1315  
www.tbastudio.com

# TBA



## Lakeshore Elementary School Office Renovation and Canopy Repair

550 Balboa Dr, Monroe, LA 71203

## DRAWING REVISIONS

| No. | Description | Date      |
|-----|-------------|-----------|
| A   | Addenda #1  | 1/12/2026 |
|     |             |           |
|     |             |           |
|     |             |           |

DRAWN BY: CJ, GS

CHECKED BY: CW

SHEET

# SP1.01

Date: 2025

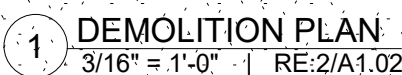
Project No.: 25-WM0039

File Name:

DESCRIPTION:

SITE PLAN

1 SITE PLAN  
1" = 30'-0" | RE:2/A1.02



\*COPYRIGHT\* THESE DRAWINGS ARE THE SOLE OWNERSHIP OF TBA STUDIO

Lakeshore Elementary School Office  
Renovation and Canopy Repair

**D1.01**

---

Date: 1/12/2026

---

Project No.: 25-WM0039

---

File Name:

---

**DESCRIPTION:**

---

**DEMOLITION PLAN**

**TBA STUDIO**  
ARCHITECTURE  
103 Cypress Street  
West Monroe, LA 71291  
Tel. 318.340.1550  
Fax. 318.998.1315  
[www.tbastudio.com](http://www.tbastudio.com)



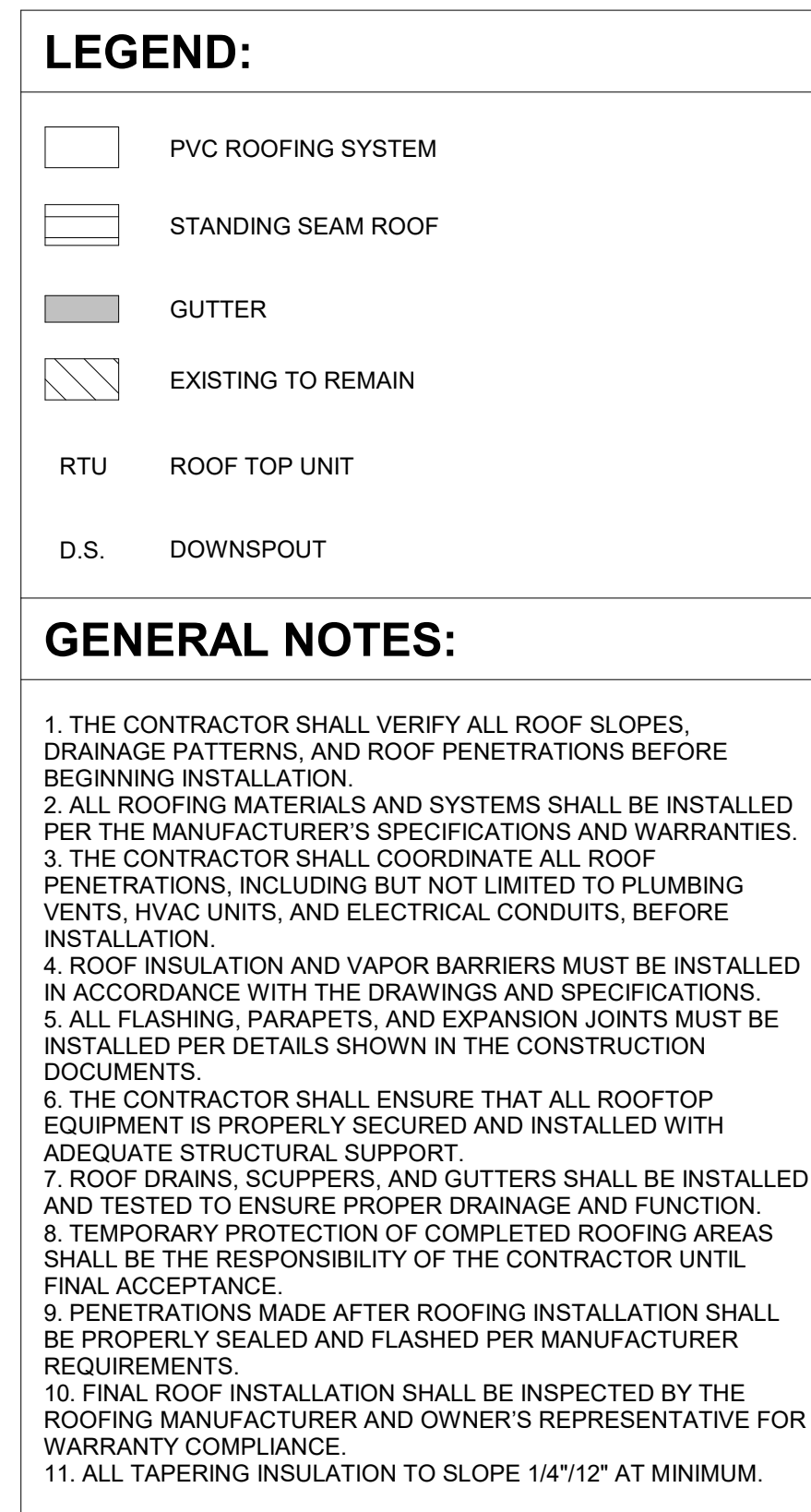


Diagram illustrating the installation details for a roof edge assembly, showing the relationship between various components and their dimensions.

**Labels and Components:**

- SEALANT
- INSTALL COMPRESSIBLE ELASTOMERIC SEALANT OR TAPE TO SPAN IRREGULARITIES
- MASONRY FASTENERS
- TERMINATION BAR FASTENED W/ APPROPRIATE FASTENERS APPROX. 12" O.C.
- SHEET METAL COUNTERFLASHING
- FLASHING MEMBRANE (8" MIN. HEIGHT)
- SEALANT OR PER MANUF. REQUIREMENT
- PVC ROOF MEMBRANE OVER 1/2" COVERBOARD OVER TAPERED INSULATION BD.
- EXISTING BRICK PROTECT THROUGHOUT CONSTRUCTION

**Dimensions:**

- 8" MIN. (Height of flashing membrane)

**6 ENLARGED DETAIL**  
 1 1/2" = 1'-0" | RE: 1/A.103

| No. | Description | Date      |
|-----|-------------|-----------|
| A   | Addenda #1  | 1/12/2026 |
|     |             |           |
|     |             |           |
|     |             |           |
|     |             |           |



| NUMBER | ROOM NAME               | FLOOR | BASE   | WALLS    |       |           |       | CEILING TYPE | CEILING HT. |
|--------|-------------------------|-------|--------|----------|-------|-----------|-------|--------------|-------------|
|        |                         |       |        | NORTH    | EAST  | SOUTH     | WEST  |              |             |
| 100    | RECEPTION               | LVT   | RB     | PNT-1    | CWG-1 | PNT-1     | PNT-1 | ACT-1        | 9'-0"       |
| 101    | SENSORY ROOM            | LVT   | RB     | PNT-1    | PNT-1 | PNT-1     | WG-3  | ACT-1        | 9'-0"       |
| 102    | PANTRY/SUPPLIES         | LVT   | RB     | PNT-1    | PNT-1 | PNT-1     | PNT-1 | ACT-1        | 9'-0"       |
| 103    | CONFERENCE ROOM         | LVT   | RB     | PNT-1    | PNT-1 | WW        | PNT-1 | ACT-1        | 9'-0"       |
| 104    | WORK AREA               | LVT   | RB     | PNT-1    | PNT-1 | CWG-2     | PNT-1 | ACT-1        | 9'-0"       |
| 105    | OFFICE                  | LVT   | RB     | PNT-1    | PNT-1 | PNT-1     | PNT-1 | ACT-1        | 9'-0"       |
| 106    | SUPPLY                  | LVT   | RB     | PNT-1    | PNT-1 | PNT-1     | PNT-1 | ACT-1        | 9'-0"       |
| 107    | DATA CLOSET             | LVT   | RB     | PNT-1    | PNT-1 | PNT-1     | PNT-1 | ACT-1        | 9'-0"       |
| 108    | MEP                     | LVT   | RB     | PNT-1    | PNT-1 | PNT-1     | PNT-1 | ACT-1        | 9'-0"       |
| 109    | VICE PRINCIPAL'S OFFICE | LVT   | RB     | WW       | PNT-1 | CWG-3     | PNT-1 | ACT-1        | 9'-0"       |
| 110    | CLOSET                  | LVT   | RB     | PNT-1    | PNT-1 | PNT-1     | PNT-1 | ACT-1        | 9'-0"       |
| 111    | CLOSET                  | LVT   | RB     | PNT-1    | PNT-1 | PNT-1     | PNT-1 | ACT-1        | 9'-0"       |
| 112    | BREAK ROOM              | LVT   | RB     | PNT-1    | PNT-1 | PNT-1     | PNT-1 | ACT-1        | 9'-0"       |
| 113    | NURSE'S OFFICE          | LVT   | RB     | PNT-1    | PNT-1 | PNT-1     | PNT-1 | ACT-1        | 9'-0"       |
| 114    | ASSESSMENT ROOM         | LVT   | RB     | WG-6     | PNT-1 | PNT-1     | PNT-1 | ACT-1        | 9'-0"       |
| 115    | PRINCIPAL'S OFFICE      | LVT   | RB     | PNT-1/WW | CWG-3 | PNT-1     | PNT-1 | ACT-1        | 9'-0"       |
| 116    | RR                      | PFT   | PTB    | PWT-1    | PWT-1 | PWT-1     | PWT-1 | ACT-2        | 9'-0"       |
| 117    | RR                      | PFT   | PTB    | PWT-1    | PWT-1 | PWT-1     | PWT-1 | ACT-2        | 9'-0"       |
| 118    | RR                      | PFT   | PTB    | PWT-1    | PWT-1 | PWT-1     | PWT-1 | ACT-2        | 9'-0"       |
| 119    | CORRIDOR                | LVT   | RB     | PNT-1    | PNT-1 | PNT-1     | PNT-1 | ACT-1        | 9'-0"       |
| 120    | CORRIDOR                | LVT   | RB     | PNT-1    | PNT-1 | PNT-1     | PNT-1 | ACT-1        | 9'-0"       |
| 121    | VESTIBULE               | LVT   | RB     | PNT-1    | PNT-1 | PNT-1     | PNT-1 | ACT-1        | 9'-0"       |
| 122    | EXISTING CORRIDOR       | ETR   | ETR/RB | ETR      | ETR   | CWG-4/ETR | ETR   | ETR          |             |

## FINISHES

|                                       |   |        |   |
|---------------------------------------|---|--------|---|
| FLOORS - REFERENCE FLOOR PATTERN PLAN |   | WALLS  | ONLY REPRESENTS FINISH LAYER OF WALL ASSEMBLY UNLESS NOTED OTHERWISE  |
| LVT                                   | LUXURY VINYL TILE - SEE SPECIFICATIONS                | GYP 1  | 5/8" GYPSUM BOARD - TAPE, FLOAT, AND PAINT - SEE SPECIFICATIONS   |
| PFT                                   | PROCELAINE FLOOR TILE - SEE SPECIFICATIONS            | PWT-1  | PORCELAIN WALL TILE 1 - SEE SPECIFICATIONS  |
|                                       |   | CWG -1 | WALL GRAPHIC 1 - SEE SPECIFICATIONS<br>NOTE: GYP TO BE INSTALLED IN ALL LOCATIONS WHERE WALLCOVERINGS ARE INDICATED.                  |
| BASE                                  |   | CWG -2 | WALL GRAPHIC 2 - SEE SPECIFICATIONS<br>NOTE: GYP TO BE INSTALLED IN ALL LOCATIONS WHERE WALLCOVERINGS ARE INDICATED.                  |
| RB                                    | 4" RUBBER BASE - SEE SPECIFICATIONS                   | CWG -3 | WALL GRAPHIC 3 - SEE SPECIFICATIONS<br>NOTE: GYP TO BE INSTALLED IN ALL LOCATIONS WHERE WALLCOVERINGS ARE INDICATED.                  |
| PTB                                   | PORCELINE TILE BASE - SEE SPECIFICATIONS              | CWG -4 | WALL GRAPHIC 4 - SEE SPECIFICATIONS<br>NOTE: IMPACT RESISTANT GYP TO BE INSTALLED IN ALL LOCATIONS WHERE WALLCOVERINGS ARE INDICATED. |
| CEILING                               |   | WW     | WOOD SLAT WALL - SEE SPECIFICATIONS   |
| ACT 1                                 | 2' x 2' ACOUSTICAL TILE - SEE SPECIFICATIONS          |        |   |
| ACT 2                                 | 2' x 2' WASHABLE ACOUSTICAL TILE - SEE SPECIFICATIONS |        |   |

1. ALL FINISH COLORS ARE TO BE APPROVED BY OWNER AND ARCHITECT ONCE PHYSICAL SAMPLES ARE RECEIVED FROM CONTRACTOR FOR EVERY MATERIAL IN THE PROJECT. EVERY MATERIAL COLOR IN THE PROJECT WILL BE APPROVED AT ONE TIME. THE CONTRACTOR'S DELAY IN PROVIDING ALL SUBMITTAL SAMPLES FOR REVIEW AND APPROVAL WILL NOT CONSTITUTE AN EXTENSION OF PROJECT TIME. THE ARCHITECT WILL NOT APPROVE ONE COLOR WITHOUT ALL MATERIAL SAMPLES FOR CONSIDERATION. A COLOR BOARD WILL BE PRODUCED FOR THE OWNER TO APPROVE ALL COLORS AT ONE TIME.
2. ALL EXPOSED STRUCTURAL STEEL AT WALLS & CEILINGS ARE TO BE PAINTED. SEE SPECS.

| Door Schedule |       |        |               |       |                |          |        |       |       |             |                |       |
|---------------|-------|--------|---------------|-------|----------------|----------|--------|-------|-------|-------------|----------------|-------|
| MARK          | WIDTH | HEIGHT | DOOR MATERIAL |       | FRAME MATERIAL |          | DETAIL |       | ELEV. | FIRE RATING | ACCESS CONTROL | NOTES |
|               |       |        |               |       |                |          | JAMB   | HEAD  |       |             |                |       |
| 1             | 3'-0" | 7'-0"  | GLASS         | ALUM. | 7/IA2.01       | 8/A2.01  | C      | 20min |       |             |                |       |
| 2             | 3'-0" | 7'-0"  | GLASS         | ALUM. | 7/IA2.01       | 8/A2.01  | C      |       |       |             |                |       |
| 3             | 3'-0" | 7'-0"  | P. LAM.       | H.M.  | 7/IA2.01       | 8/A2.01  | D      |       |       |             |                |       |
| 4             | 3'-0" | 7'-0"  | P. LAM.       | H.M.  | 7/IA2.01       | 8/A2.01  | D      |       |       |             |                |       |
| 5             | 3'-0" | 7'-0"  | P. LAM.       | H.M.  | 7/IA2.01       | 8/A2.01  | A      |       |       |             |                |       |
| 6             | 3'-0" | 7'-0"  | P. LAM.       | H.M.  | 9/A2.01        | 10/A2.01 | D      |       |       |             |                |       |
| 7             | 6'-0" | 7'-0"  | P. LAM.       | H.M.  | 7/IA2.01       | 8/A2.01  | B      |       |       |             |                |       |
| 8             | 3'-0" | 7'-0"  | P. LAM.       | H.M.  | 7/IA2.01       | 8/A2.01  | A      |       |       |             |                |       |
| 9             | 3'-0" | 7'-0"  | P. LAM.       | H.M.  | 9/A2.01        | 10/A2.01 | D      | 20min |       |             |                |       |
| 10            | 3'-0" | 7'-0"  | P. LAM.       | H.M.  | 7/IA2.01       | 8/A2.01  | A      |       |       |             |                |       |
| 11            | 3'-0" | 7'-0"  | P. LAM.       | H.M.  | 7/IA2.01       | 8/A2.01  | A      |       |       |             |                |       |
| 12            | 3'-0" | 7'-0"  | P. LAM.       | H.M.  | 7/IA2.01       | 8/A2.01  | D      |       |       |             |                |       |
| 13            | 3'-0" | 7'-0"  | GLASS         | ALUM. |                |          | C      |       |       |             |                |       |
| 14            | 3'-0" | 7'-0"  | P. LAM.       | H.M.  | 7/IA2.01       | 8/A2.01  | D      |       |       |             |                |       |
| 15            | 3'-0" | 7'-0"  | P. LAM.       | H.M.  | 7/IA2.01       | 8/A2.01  | A      |       |       |             |                |       |
| 16            | 3'-0" | 7'-0"  | P. LAM.       | H.M.  | 7/IA2.01       | 8/A2.01  | A      |       |       |             |                |       |
| 17            | 3'-0" | 7'-0"  | P. LAM.       | H.M.  | 9/A2.01        | 10/A2.01 | A      |       |       |             |                |       |
| 18            | 3'-0" | 7'-0"  | P. LAM.       | H.M.  | 9/A2.01        | 10/A2.01 | A      |       |       |             |                |       |
| 19            | 3'-0" | 7'-0"  | P. LAM.       | H.M.  | 12/A2.01       | 11/A2.01 | D      |       |       |             |                |       |
| 20            | 3'-0" | 7'-0"  | P. LAM.       | H.M.  | 7/IA2.01       | 8/A2.01  | D      |       |       |             |                |       |
| 21            | 3'-0" | 7'-0"  | P. LAM.       | H.M.  | 7/IA2.01       | 8/A2.01  | D      |       |       |             |                |       |
| 22            | 3'-0" | 7'-0"  | P. LAM.       | H.M.  | 9/A2.01        | 10/A2.01 | D      | 20min |       |             |                |       |
| 23            | 3'-0" | 7'-0"  | P. LAM.       | H.M.  | 7/IA2.01       | 8/A2.01  | A      |       |       |             |                |       |

The diagrams illustrate the dimensions for four types of doors, each with a dashed diagonal line indicating the schedule's placement. The dimensions are labeled as follows:

- TYPE A:** A standard door with a dashed diagonal line from the top-left to the bottom-right. The width is labeled "RE: DOOR SCHEDULE", the height is labeled "RE: DOOR SCHEDULE", and the depth is labeled "RE: DOOR SCHEDULE".
- TYPE B:** A door with a central vertical panel and a dashed diagonal line from the top-left to the bottom-right. The width is labeled "RE: DOOR SCHEDULE", the height is labeled "RE: DOOR SCHEDULE", and the depth is labeled "RE: DOOR SCHEDULE".
- TYPE C:** A door with a central rectangular panel and a dashed diagonal line from the top-left to the bottom-right. The width is labeled "RE: DOOR SCHEDULE", the height is labeled "RE: DOOR SCHEDULE", and the depth is labeled "RE: DOOR SCHEDULE".
- TYPE D:** A door with a central rectangular panel and a dashed diagonal line from the top-left to the bottom-right. The width is labeled "RE: DOOR SCHEDULE", the height is labeled "RE: DOOR SCHEDULE", and the depth is labeled "RE: DOOR SCHEDULE".

5/8" GYP. BD. SEE SCHEDULE FOR TYPE

6" METAL STUD HEADER

DOOR SEE SCHEDULE

3 5/8" METAL STUDS @ 16" O.C.

1/2"

1/2"

7'-0" A.F.F.

2" HOLLOW METAL FRAME TO SWALLOW WALL

**8 HEAD DETAIL**  
1 1/2" = 1'-0"

5/8" GYP. BD. SEE SCHEDULE FOR TYPE

3 5/8" METAL STUDS @ 16" O.C.

(2) 3 5/8" METAL STUDS

1/2"

1/2"

3 JAMB ANCHORS PER JAMB

DOOR SEE SCHEDULE

2" HOLLOW METAL FRAME TO SWALLOW WALL

**7 JAMB DETAIL**  
1 1/2" = 1'-0"

5/8" GYP. BD. SEE SCHEDULE FOR TYPE

8" METAL STUD HEADER

SHIM AS REQ.

3 5/8" METAL STUDS @ 16" O.C.

BACKER ROD & SEALANT (BOTH SIDES)

2"x4 1/2" STOREFRONT FRAME

WINDOW, SEE SCHEDULE

**6 WINDOW HEAD**  
1 1/2" = 1'-0" | RE: B/A2.01

3 5/8" METAL STUDS @ 16" O.C.

5/8" GYP. BD. SEE SCHEDULE FOR TYPE

(2) 3 5/8" METAL STUDS

BACKER ROD & SEALANT (BOTH SIDES)

SHIM AS REQ.

WINDOW, SEE SCHEDULE

2"x4 1/2" STOREFRONT FRAME

**5 WINDOW JAMB**  
1 1/2" = 1'-0" | RE: B/A2.01

5/8" GYP. BD. SEE SCHEDULE FOR TYPE

SHIM AS REQ.

DOOR SEE SCHEDULE

7 3/4"

2 1/2" METAL STUDS @ 16" O.C.

BACKER ROD & SEALANT BOTH SIDES

7'-0" A.F.F.

**12 HEAD DETAIL**  
1 1/2" = 1'-0"

5/8" GYP. BD. SEE SCHEDULE FOR TYPE

3 JAMB ANCHORS PER JAMB

DOOR SEE SCHEDULE

7 3/4"

2 1/2" METAL STUDS @ 16" O.C.

SHIM AS REQUIRED

BACKER ROD & SEALANT (BOTH SIDES)

2" HOL. MTL. FRAME. PAINTED.

**11 JAMB DETAIL**  
1 1/2" = 1'-0"

5/8" GYP. BD. SEE SCHEDULE FOR TYPE

6" METAL STUD HEADER

SHIM AS REQ.

DOOR SEE SCHEDULE

7 3/4"

2 1/2" METAL STUDS @ 16" O.C.

BACKER ROD & SEALANT BOTH SIDES

7'-0" A.F.F.

**10 HEAD DETAIL**  
1 1/2" = 1'-0"

5/8" GYP. BD. SEE SCHEDULE FOR TYPE

3 JAMB ANCHORS PER JAMB

DOOR SEE SCHEDULE

7 3/4"

3 5/8" METAL STUDS @ 16" O.C.

(2) 3 5/8" METAL STUDS

(2) 6" METAL STUDS

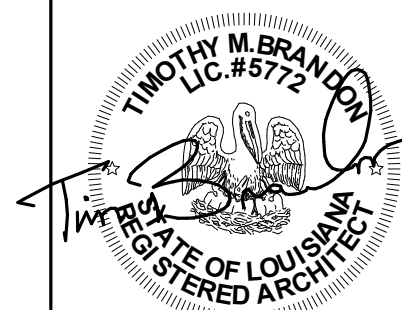
SHIM AS REQUIRED

BACKER ROD & SEALANT (BOTH SIDES)

**9 JAMB DETAIL**  
1 1/2" = 1'-0"

\*COPYRIGHT\* THESE DRAWINGS ARE THE SOLE OWNERSHIP OF TBA STUDIO

பு



# Lakeshore Elementary School Office Renovation and Canopy Repair

550 Balboa Dr, Monroe, LA 71203

| No. | Description | Date      |
|-----|-------------|-----------|
|     | Addenda #1  | 1/12/2026 |
|     |             |           |
|     |             |           |
|     |             |           |
|     |             |           |

SHEET

## A2.01

Full Name: \_\_\_\_\_

ROOM FINISH

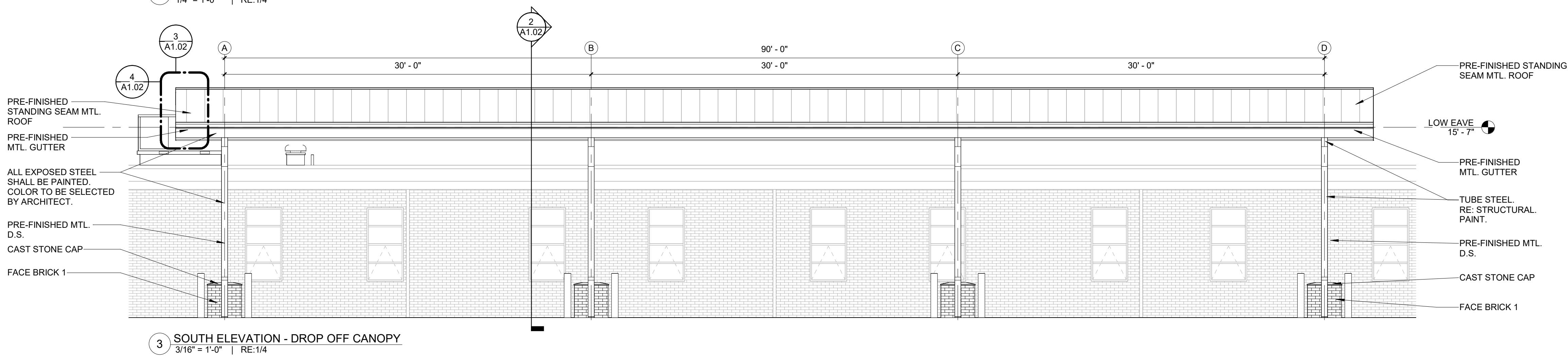
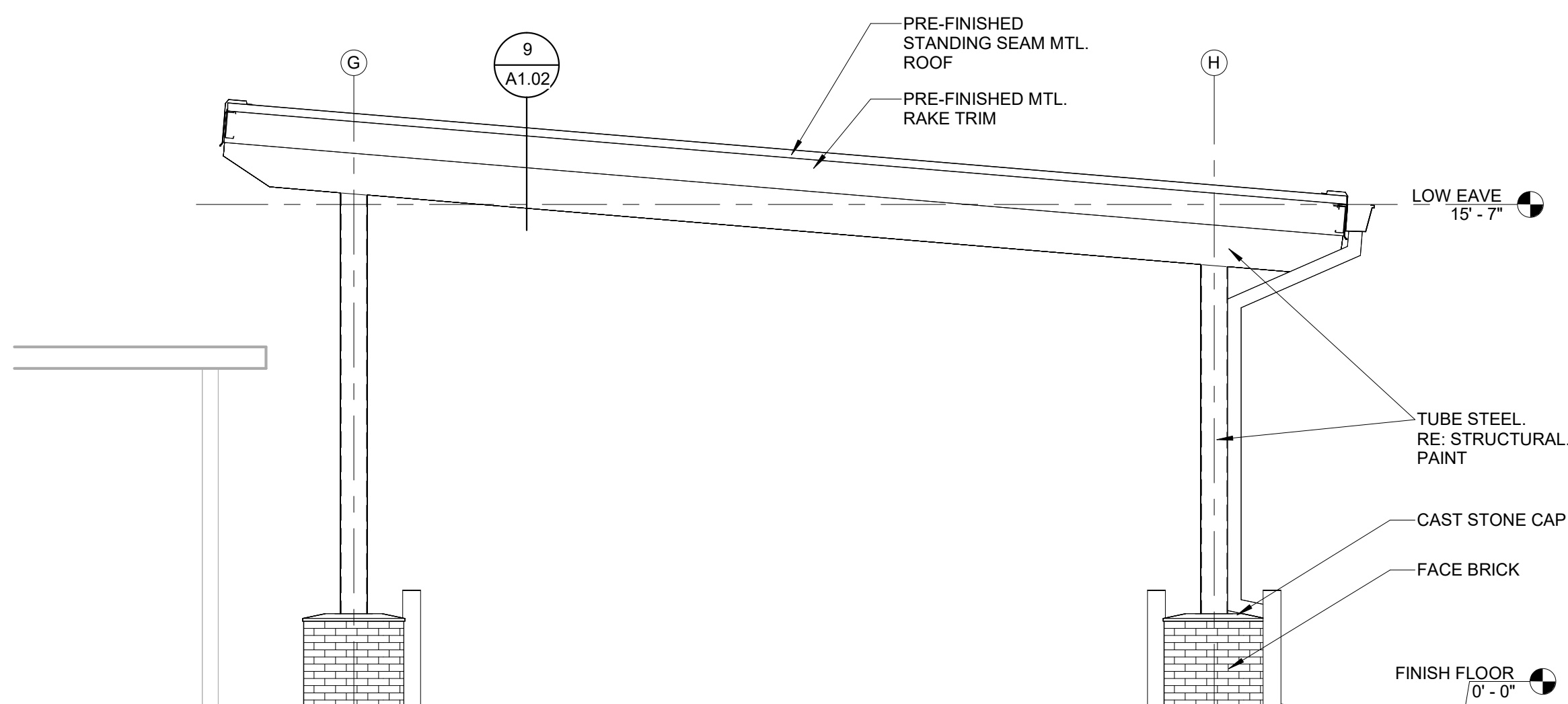
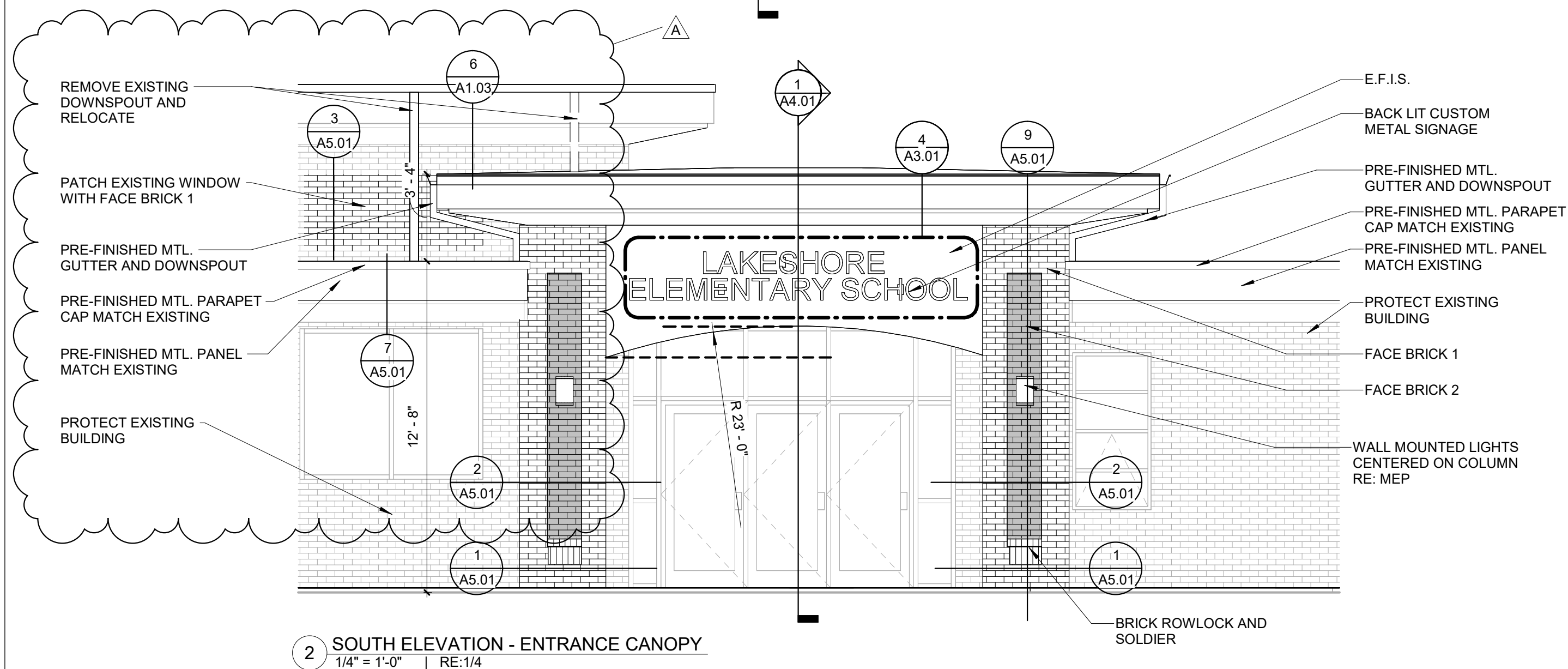
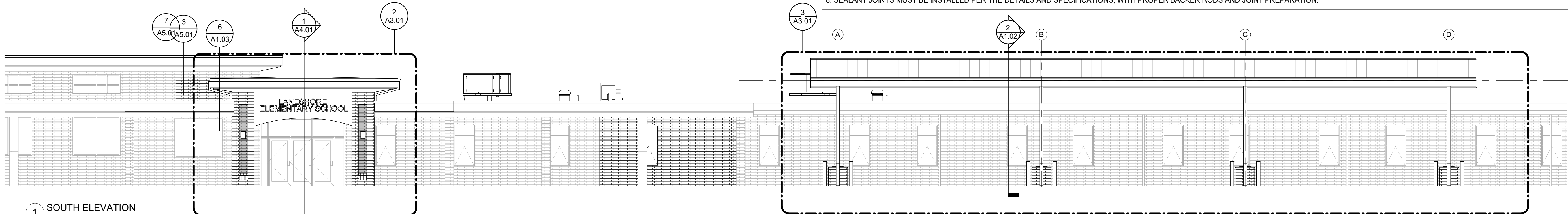
## ROOM FINISH SCHEDULE

GENERAL NOTES

1. THE CONTRACTOR SHALL VERIFY ALL EXTERIOR MATERIAL TRANSITIONS AND ENSURE PROPER ALIGNMENT AND INSTALLATION PER THE APPROVED DRAWINGS.
2. ALL EXTERIOR CLADDING, INCLUDING MASONRY, STUCCO, METAL PANELS, AND SIDING, SHALL BE INSTALLED PER MANUFACTURER INSTRUCTIONS AND SPECIFICATIONS.
3. THE CONTRACTOR SHALL COORDINATE ALL EXTERIOR PENETRATIONS, INCLUDING ELECTRICAL, MECHANICAL, AND PLUMBING COMPONENTS, TO ENSURE PROPER INTEGRATION WITH THE FAÇADE.
4. FLASHING AND WATERPROOFING DETAILS AROUND WINDOWS, DOORS, AND OTHER OPENINGS MUST BE INSTALLED PER APPROVED DETAILS AND SHOP DRAWINGS.
5. ALL EXPOSED FASTENERS, EXPANSION JOINTS, AND TRIM PIECES MUST BE INSTALLED PER THE DESIGN INTENT AND PROJECT SPECIFICATIONS.
6. EXTERIOR FINISHES SHALL BE PROTECTED FROM CONSTRUCTION DAMAGE AND SHALL BE CLEANED PRIOR TO PROJECT COMPLETION.
7. THE CONTRACTOR SHALL ENSURE PROPER INSTALLATION OF EXTERIOR SUNSHADES, CANOPIES, AND DECORATIVE ELEMENTS IN COORDINATION WITH STRUCTURAL SUPPORTS.
8. SEALANT JOINTS MUST BE INSTALLED PER THE DETAILS AND SPECIFICATIONS, WITH PROPER BACKER RODS AND JOINT PREPARATION.

LEGEND

- FACE BRICK 1
- FACE BRICK 2
- STANDING SEAM MTL. ROOF



DRAWING REVISIONS

| No. | Description | Date      |
|-----|-------------|-----------|
| A   | Addenda #1  | 1/12/2026 |
|     |             |           |
|     |             |           |
|     |             |           |
|     |             |           |

DRAWN BY: Author

CHECKED BY: Checker

SHEET

A3.01

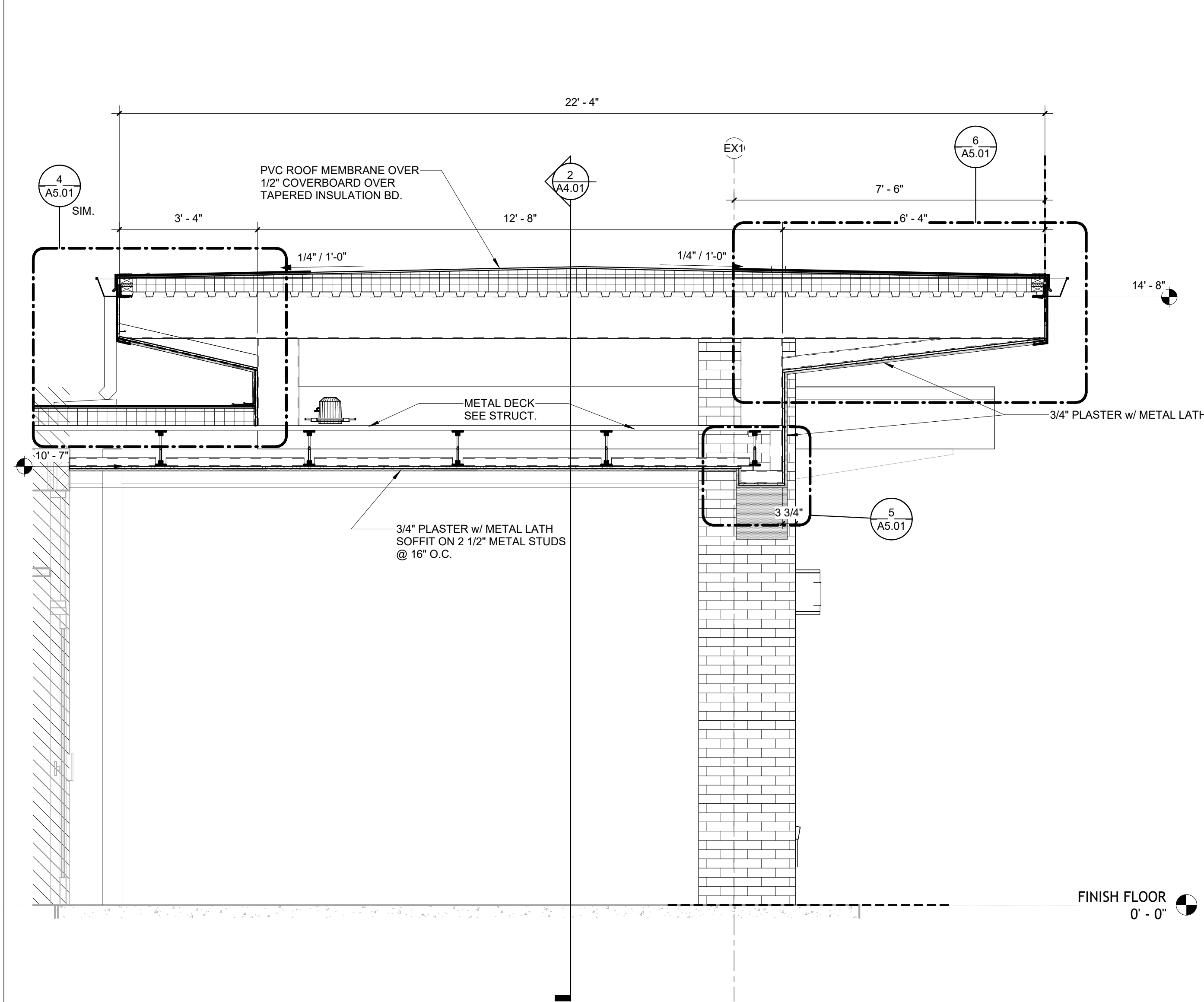
Date: 1/12/2026

Project No.: 25-WM0039

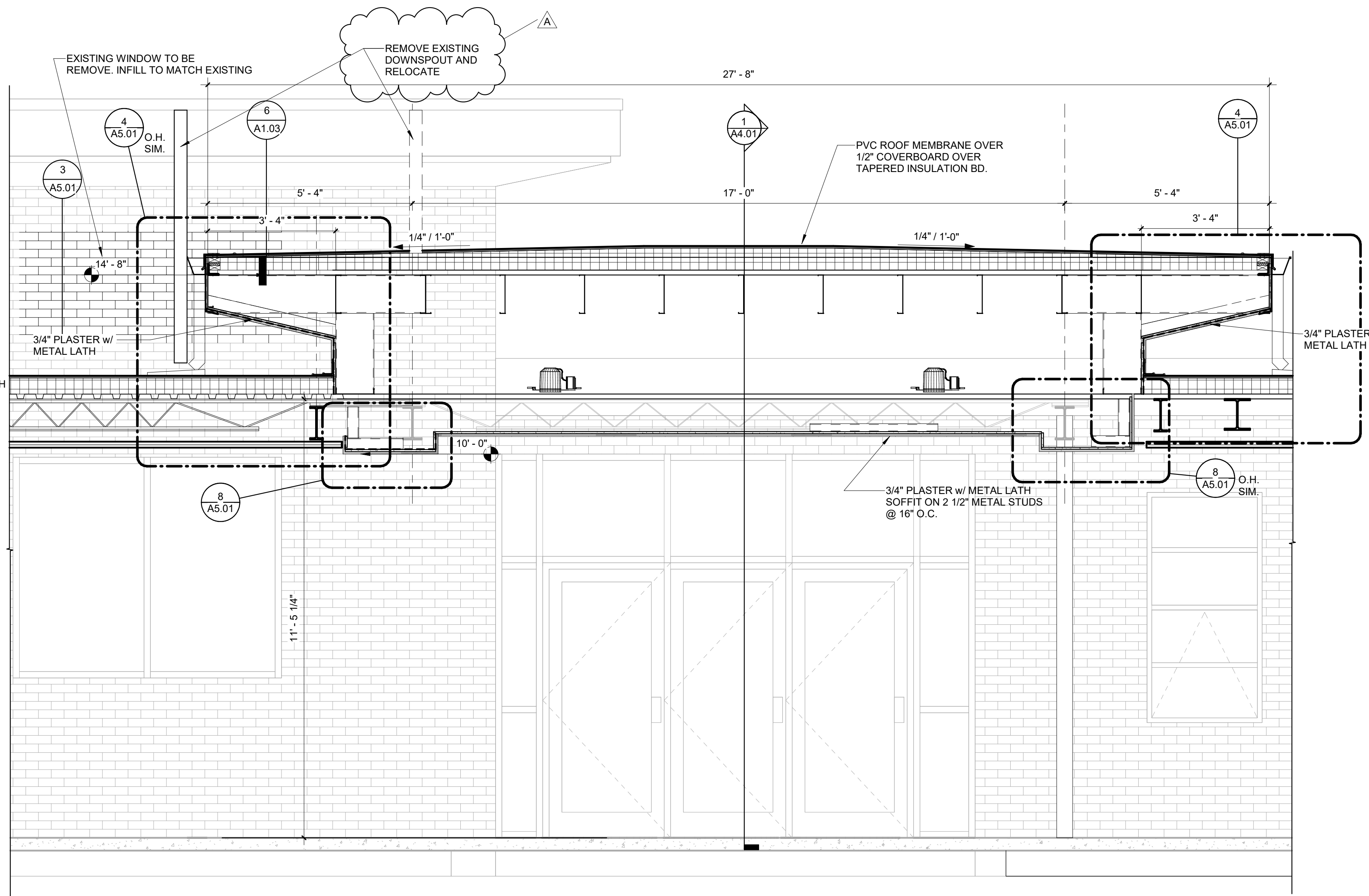
File Name:

DESCRIPTION:

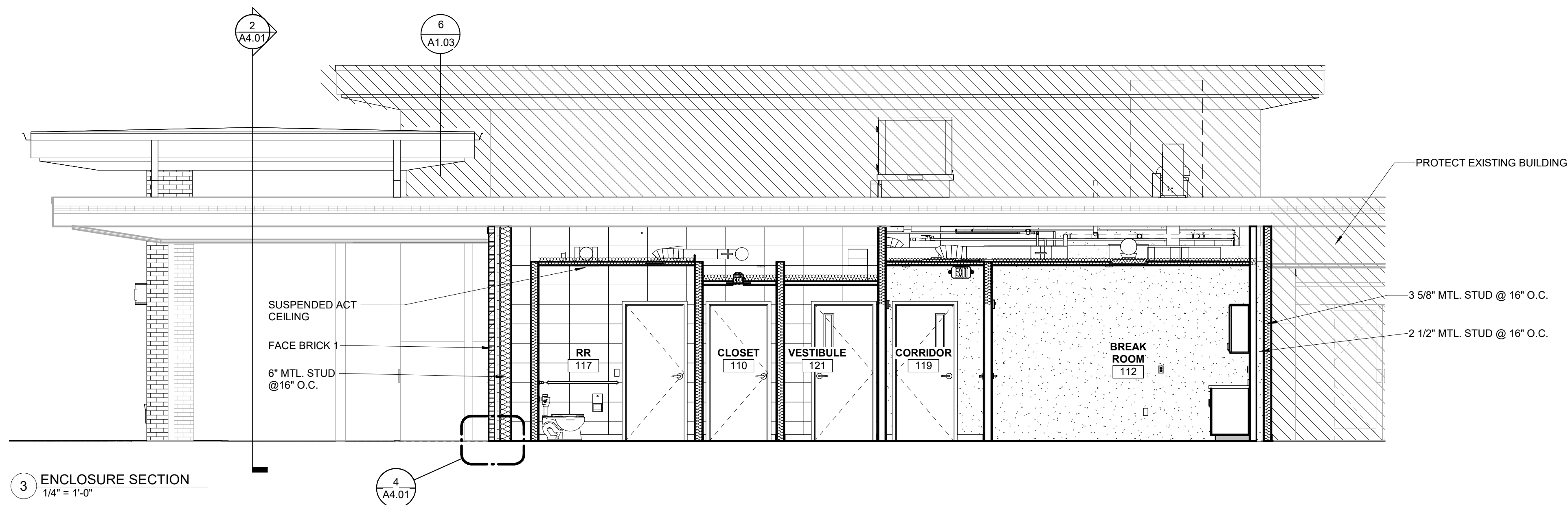
EXTERIOR  
ELEVATIONS



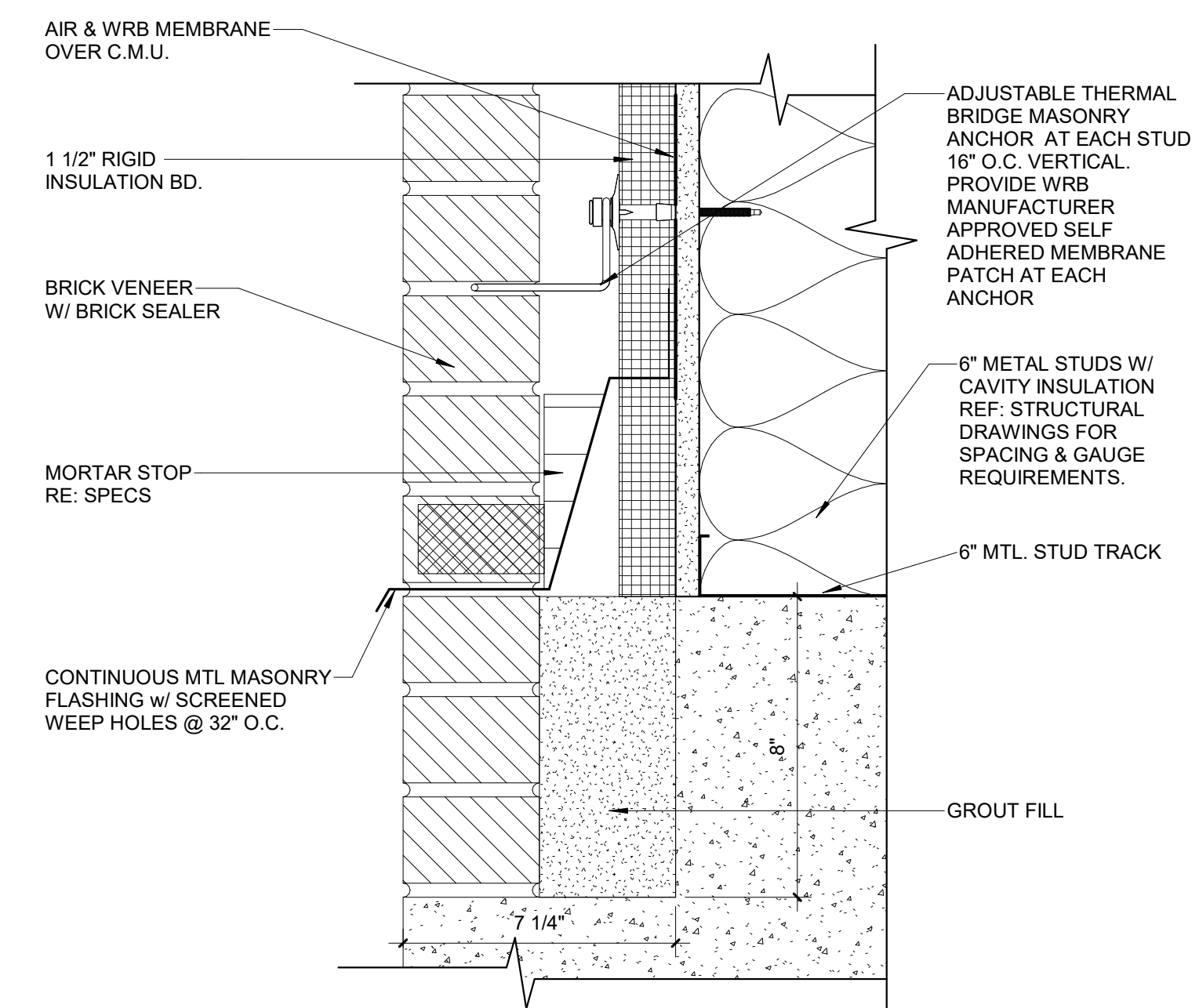
1 ENTRANCE CANOPY SECTION  
1/2" = 1'-0" | RE:1/4



2 ENTRANCE CANOPY SECTION  
1/2" = 1'-0" | RE:1/4



3 ENCLOSURE SECTION  
1/4" = 1'-0"



4 ENLARGED WALL BASE DETAIL  
3\"/>

TBA STUDIO  
ARCHITECTURE  
103 Cypress Street  
West Monroe, LA 71291  
Tel. 318.340.1550  
Fax. 318.998.1315  
www.tbastudio.com

**TBA**



Lakeshore Elementary School Office  
Renovation and Canopy Repair

550 Balboa Dr., Monroe, LA 71203

#### DRAWING REVISIONS

| No. | Description | Date      |
|-----|-------------|-----------|
| A   | Addenda #1  | 1/12/2026 |
|     |             |           |
|     |             |           |
|     |             |           |

DRAWN BY: Author

CHECKED BY: Checker

SHEET

**A4.01**

Date: 1/12/2026

Project No.: 25-WM0039

File Name:

DESCRIPTION:

BUILDING  
SECTIONS





|   |                                       |                                      |
|---|---------------------------------------|--------------------------------------|
| <i>Document name</i><br>Declaration of performance<br>Machine or visually strength graded structural timber | <i>Document nr</i><br>CPR137          | <i>Page</i><br>1 of 2                |
| <i>Prepared by</i><br>Michaela Pfeiffer   | <i>Version</i><br>02                  |                                      |
| <i>Approved by</i><br>Anders Lindh  | <i>Replaces edition</i><br>2019-04-03 | <i>Date of edition</i><br>2022-12-05 |

## DECLARATION OF PERFORMANCE CPR137

### 1. Productgroup and identification

Strength graded structural timber with rectangular cross section

- Spruce and pine with spruce and pine with rectangular cross-sections up to C30

### 2. Construction products

Machine strength graded structural timber which fulfills the requirements according to EN 14081.

For further information or detail about product than given here, please see pack specification, Delivery note or invoice.

### 3. Intended use of the construction product

For load-bearing purposes in construction works designed according to Eurocode 5 (EN 1995) and for other uses where the strength and stiffness of the structure is **essential**.

### 4. Manufacturer

Company: Moelven Industrier ASA  
Address: Industrivegen 2, 2390 Moelv, Norge  
Phone: +47 6234 70 00  
E-mail: [cert@moelven.com](mailto:cert@moelven.com)  
Webbpage: [www.moelven.se/no/com](http://www.moelven.se/no/com)

### 5. System of assessment and verification of constancy of performance of the product

System 2+

### 6. Certifiering och angiven prestanda i enlighet med harmoniserad standard

The notified body Norsk Trelastkontroll (identification number 1070) has performed an initial inspection of the manufacturing plants and of their factory production control and performs continuous surveillance, assessment and evaluation of our factory production controls. Norsk Trelastkontroll has issued EC Certificate of Factory Production Control No. 1070 – CPR – 137.



|   |                                       |                                      |
|---|---------------------------------------|--------------------------------------|
| <i>Document name</i><br>Declaration of performance<br>Machine or visually strength graded structural timber | <i>Document nr</i><br>CPR137          | <i>Page</i><br>2 of 2                |
| <i>Prepared by</i><br>Michaela Pfeiffer   | <i>Version</i><br>02                  |                                      |
| <i>Approved by</i><br>Anders Lindh  | <i>Replaces edition</i><br>2019-04-03 | <i>Date of edition</i><br>2022-12-05 |

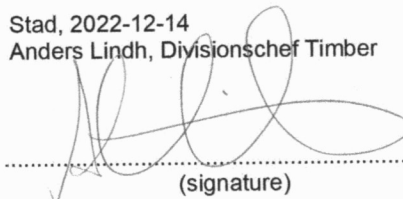
## 7. Declared performance

| Essential characteristics     | Declared values   |
|-------------------------------|---|
| Reaction to fire              | D-d2,d0 (according to EN 13501-1)   |
| Wood type                     | WPPA (Spruce and pine)  |
| Plant region                  | NE Europe   |
| Durability                    | 4 (according to SS EN 350-2)  |
| Density                       | 440 kg/m <sup>3</sup> (spruce) and 480 kg/m <sup>3</sup> (pine) (min average density) |
| Surface quality               | Sawn or planed  |
| Thickness                     | 24 – 100 mm   |
| Width                         | 75 – 300 mm   |
| Class of formaldehyde release | E1  |
| PCP (pentachlorophenol)       | NPD (no performance detected)   |
| Hazardous substances          | NPD (no performance detected)   |

## 8. Appropriate technical documentation

The property of the product declared in section no.1 and 2 is in accordance with the property stated in section no.7. This declaration of performance is prepared under the responsibility of the manufacturer specified in Section No. 4.

Stad, 2022-12-14  
Anders Lindh, Divisionschef Timber



(signature)

## Product Data Sheet

**Product Name:** V-Cut Spruce Board (Reversible Profile) **Supplier:** Gaiennie Lumber

**Manufacturer/Source:** Moelven (Sweden) **Profile Reference:** EMA Global - Edge & Center Bead Face /V Groove Back – Whitewood Spruce

---

### 1. Product Description

- **Name:** V-Cut Spruce Board (V-groove cladding/profile). This board features a prominent V-groove on one face. Based on the drawing reference, it may be reversible, with an Edge & Center Bead profile on the reverse side (please confirm with supplier if dual-profile is intended).
  - **Supplier:** Gaiennie Lumber
  - **Manufacturer/Origin:** Moelven (Sweden)
  - **Species:** Nordic Spruce (*Picea abies*), often referred to as Whitewood Spruce.
  - **Intended Use:** Exterior or interior cladding, facades, soffits, ceilings, feature walls.
- 

### 2. Dimensions (Refer to provided technical drawing for visual details)

- **Nominal (Imperial):** 1 x 6 x 16 ft (approximate market reference)
  - **Actual (Metric - derived from drawing):**
    - **Total Board Width:** 135.0 mm
    - **Effective Cover Width (Visible Face):** 127.0 mm (when installed)
    - **Overall Thickness:** 18.3 mm
    - **Tongue Thickness:** 8.0 mm (base), 6.4 mm (tip)
    - **Tongue Length:** 7.1 mm
    - **Groove Depth (Internal):** 11.1 mm
    - **V-Groove Detail:** R2.38 radius in the V-cut.
    - **Flat Face Sections:** 54.0 mm each side of the central V-groove.
  - **Typical Lengths:** 4.8 meters (16 ft) or other standard Moelven lengths.
  - **Profile:** V-cut (V-joint) on the primary visible face, with a tongue-and-groove (T&G) connection. (As noted, drawing reference suggests potential for reversible Edge & Center Bead profile on the opposite face.)
  - **Tolerance:** Per EN 336/EN 1313-1 (typical); verify specific mill tolerance sheet from Moelven.
- 

### 3. Material and Grading

- **Grade:** Visual cladding grade for appearance applications, or strength class C24 if structural properties are required (specify at order).
- **Moisture Content (MC):** Kiln Dried (KD).
  - For interior use: 12% ±2%.
  - For exterior use: 16–18% (specify required MC at time of order).
- **Surface Finish:** Planed (PNS). Optional fine-sawn face for enhanced coating adhesion may be available.
- **Finger-jointed/Laminated:** Specify if continuous lengths beyond standard stock or enhanced stability are required.

---

#### 4. Physical and Mechanical Properties (Typical for Spruce at ~12% MC)

- **Density:** 400–470 kg/m<sup>3</sup>
  - **Modulus of Elasticity (E):** ~10–12 kN/mm<sup>2</sup>
  - **Bending Strength (fm,k):** If graded C24, then 24 N/mm<sup>2</sup>
  - **Thermal Conductivity:** ~0.12 W/m·K
  - **Dimensional Movement:** Low to moderate. Design for seasonal expansion/contraction, allowing for movement at the V-joint.
- 

#### 5. Durability and Treatment

- **Natural Durability:** Class 4–5 (EN 350) – not naturally durable for exterior use without protection.
  - **Exterior Use:** Requires appropriate protective coating or impregnation treatment.
  - **Treatment Options:** Factory priming, industrial coating systems, or impregnation per EN 15228 standards. End-grain sealing is highly recommended for all exterior applications.
  - **Fire Performance:** Euroclass D-s2,d0 for untreated timber. Options for flame-retardant treatment to achieve higher Euroclasses may be available.
- 

#### 6. Sustainability and Compliance

- **Certification:** FSC or PEFC certification available from Moelven (specify chain-of-custody requirements at order).
  - **Trade Compliance:** EUTR/UKTR compliant.
  - **Product Marking:** CE/UKCA marking available for applicable uses.
  - **Emissions:** Formaldehyde: Not applicable (solid wood). VOC: Low.
- 

#### 7. Installation Guidelines

- **Acclimation:** Acclimate boards to site moisture conditions prior to installation.
  - **Fixings:** Use corrosion-resistant fasteners (e.g., stainless steel A2/A4) for exterior applications. Fasten through the tongue or face depending on the specific profile and desired aesthetic.
  - **Expansion Gaps:** Allow 3–5 mm expansion gap at board ends and between boards for proper movement.
  - **Exterior Cladding:** Install with a drained and ventilated cavity (minimum 20 mm recommended) behind the cladding. Ensure a suitable Weather-Resistive Barrier (WRB) is in place.
  - **Coatings:** For exterior use, prime all sides (especially end grain) before installation. Apply topcoats as per the coating manufacturer's specifications. Maintain according to the coating manufacturer's schedule.
- 

#### 8. Packaging and Handling

- **Supply:** Typically supplied strapped and wrapped for protection.

- **Storage:** Store timber in a cool, dry, covered, and well-ventilated area, off the ground, and protected from direct sunlight and moisture. Keep in original wrapping until just prior to installation.
- 

## **9. Health & Safety**

- **Cutting:** Always use appropriate dust extraction and wear personal protective equipment (PPE), including eye protection and respiratory protection (e.g., dust mask).

# TBA

## NAME

## ORGANIZATION

## CONTACT INFORMATION

Ryan Watson Ryan Watson Const. Phone: 318-366-1688

Email: rwatson@w/hcapp.net

Caleb Mosher Triad Phone: 318-570-1002

Email: Caleb@Triadruston.com

Daniel Rugg Rugg Commercial Const. Phone: 318-376-8911

Email: ruggcc@gmail.com

Rodney Simmons MSS (Sub) Phone: 318-594-8535

Email: estimating@mechsys.net

Carson White Grindstone Construction Phone: 318-718-1200

Email: carson@grindstoneconstructionllc.com

Tyler Ragan Ragan Builders Inc Phone: 318-372-5725

Email: tyler@raganbuilders.net

Damon Mayfield Dand Lot Puchita dba Mayfield construction Phone: 318-644-4442

Email: damon@mayfieldconstruction.net

\_\_\_\_\_  
Phone: \_\_\_\_\_

Email: \_\_\_\_\_



**Lakeshore Elementary School Canopy Additions and Main Office  
Renovations Pre-Bid Meeting  
IN SHEET**

Date of Conference: January 9, 2026

Time of Conference: 10 AM

| NAME                   | ORGANIZATION                 | CONTACT INFORMATION  |
|------------------------|------------------------------|--|
| <u>Christian Jones</u> | <u>TBA Studio</u>            | Phone: <u>(318) 340-1550 EXT. 102</u><br>Email: <u>cjones@tbastudio.com</u>  |
| <u>Rich Nadler</u>     | <u>TBA Studio</u>            | Phone: <u>(318) 340-1550 EXT. 119</u><br>Email: <u>rnadler@tbastudio.com</u> |
| <u>Keith Bamberg</u>   | <u>Faith Heat &amp; Cool</u> | Phone: <u>318-777-2665</u><br>Email: <u>Faithheatandcool@gmail.com</u>       |
| <u>Daniel Moore</u>    | <u>Mann's Construction</u>   | Phone: <u>318-322-3051</u><br>Email: <u>Patricia@Mannsconst.com</u>          |
| <u>Ram Foster</u>      | <u>Gentry Construction</u>   | Phone: <u>318-855-8987</u><br>Email: <u>gentryconstine@bellsouth.net</u>     |
| <u>Heath Fruge</u>     | <u>Ryan Watson Const.</u>    | Phone: <u>318-372-7309</u><br>Email: <u>hfruge@wlhcorp.net</u>               |



## **ADDENDUM NO.: 1**

### **PROJECT: LAKESHORE OFFICE RENOVATION AND CANOPY REPAIR**

**ALTA PROJECT NO.: 005-010-2025**

**January 13, 2026**

#### **GENERAL:**

The following list identifies products, materials, and/or manufacturers that are approved as acceptable for bidding purposes only. Such approval does not constitute acceptance of any particular product, does not waive any requirement of the Contract Documents, and shall not relieve the Contractor of responsibility to provide materials and equipment that comply fully with the Drawings and Specifications. All products shall meet or exceed all requirements of the Contract Documents and remain subject to review and approval through the shop drawing and submittal process. Only the manufacturers specifically listed herein are approved under this addendum. No other substitutions will be considered unless submitted in accordance with Division 01 requirements for substitution requests.

#### **Lighting**

| <u>Mark</u> | <u>Manufacturer</u>            | <u>Model No.</u>  |
|-------------|--------------------------------|---|
| CN1*        | STONCO<br>ILP                  | GC60-SCT-G2-SM-5-10-BZ<br>VCS-3L/5L/7L-U-CCTS-M-BRZ-MWS-PCU |
| LA2         | DAY-BRITE<br>HE WILLIAMS, INC. | 2FGXG48L835-4-RS-UNV-DIM<br>LT-24-L52/835-AF-(L48)-DIM1-UNV |
| LA3         | DAY-BRITE<br>HE WILLIAMS, INC. | 2FGXG30L835-4-RS-UNV-DIM<br>LT-24-L40/835-AF-(L30)-DIM1-UNV |
| LA4         | DAY-BRITE<br>HE WILLIAMS, INC. | 2FGXG43L835-4-RS-UNV-DIM<br>LT-24-L40/835-AF-DIM1-UNV       |
| LB1         | DAY-BRITE<br>HE WILLIAMS, INC. | 2FGXG20L835-2-RS-UNV-DIM<br>LT-22-L27/835-AF-(L20)-DIM1-UNV |
| LC1         | DAY-BRITE                      | FLP440LHE935-R-UNV-DIM                                      |
| LD1*        | HE WILLIAMS, INC.              | 6DR-TL-L30/850-DIM1-UNV-ON-OFF-CS-N-F1                      |



|     |                                  |  |
|-----|----------------------------------|--|
| LD3 | LIGHTOLIER<br>HE WILLIAMS, INC.  | M6RDL109CSWCLZ10U/6RNSR<br>6DR-TL-L10/835-(L5)-DIM1-UNV-OM-OF-CS-N-F1      |
| SC1 | FC LIGHTING<br>HE WILLIAMS, INC. | FCC800-12-WM-UNV-940-40L-FINISH-40-LD<br>W6CR-09-L40/840-DBZ-DIM1-UNV-W-WM |
| X3  | CHLORIDE<br>COMPASS              | CLCNRW<br>CCR COMBO EXIT/UNIT LED HEADS UNV FACE                           |

\* Fixture approved as submitted. Provide with CCT of 4000 degree K.

**ELECTRICAL:**

**Plans:**

**Sheet E1.02:**

1. Exterior downlights at entry canopy labeled "LD8" (quantity 6) shall be type "LD1" as indicated in lighting fixture schedule.
2. Type "LA1" fixtures shall not be used.
3. Type "LC1" fixtures shall be 4' LED strip light equal to Lithonia CLX L48 4000LM HEF RDL MVOLT 35K 90 CRI, 3500 degree K, 4000 lumens, surface mount.
4. Exterior fixtures, Types "LD1", "SC1", and "CN1" shall have a CCT of 4000 degree K.