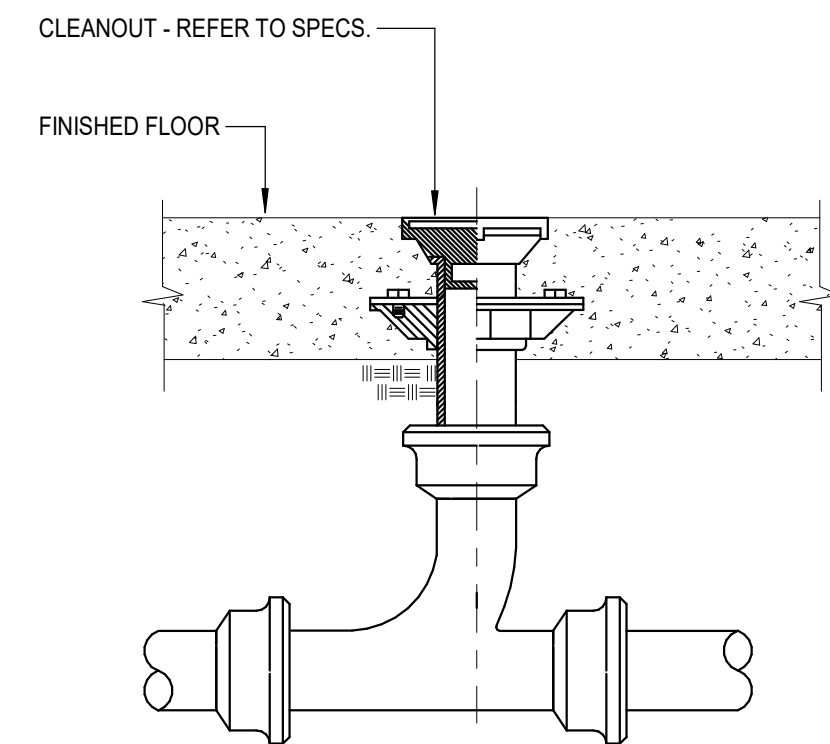
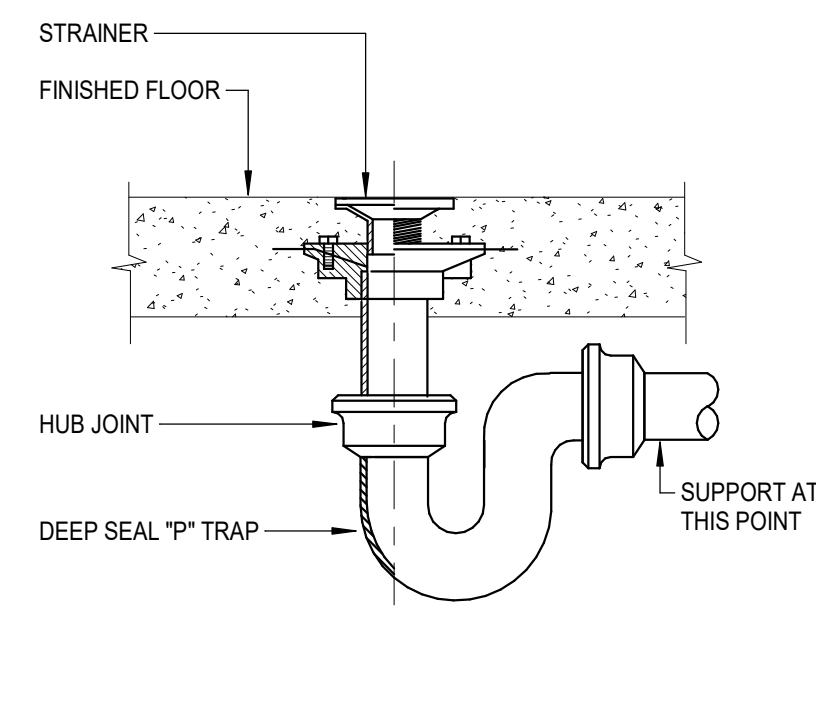


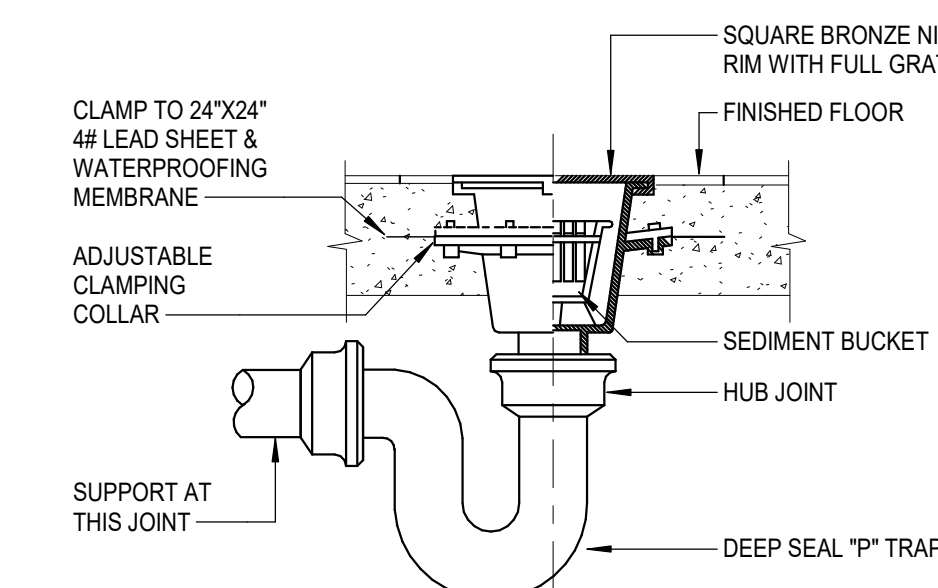
1 EXTERIOR CLEANOUT
SCALE: NONE



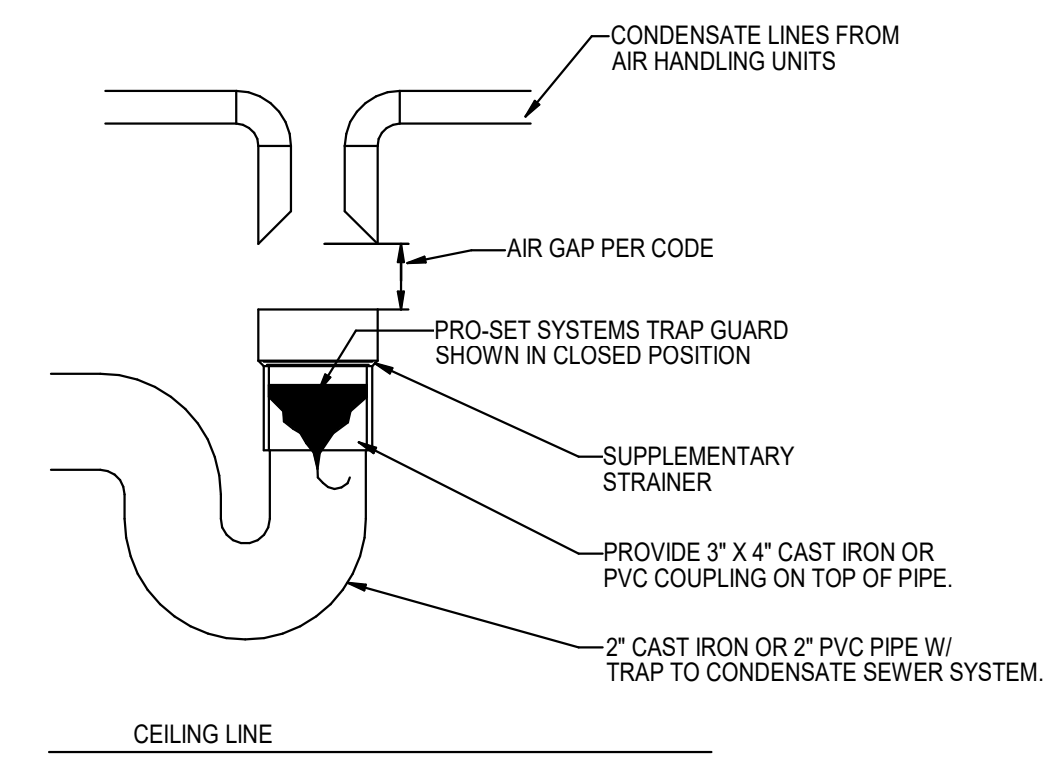
2 FLOOR CLEANOUT
SCALE: NONE



3 FLOOR DRAIN
SCALE: NONE



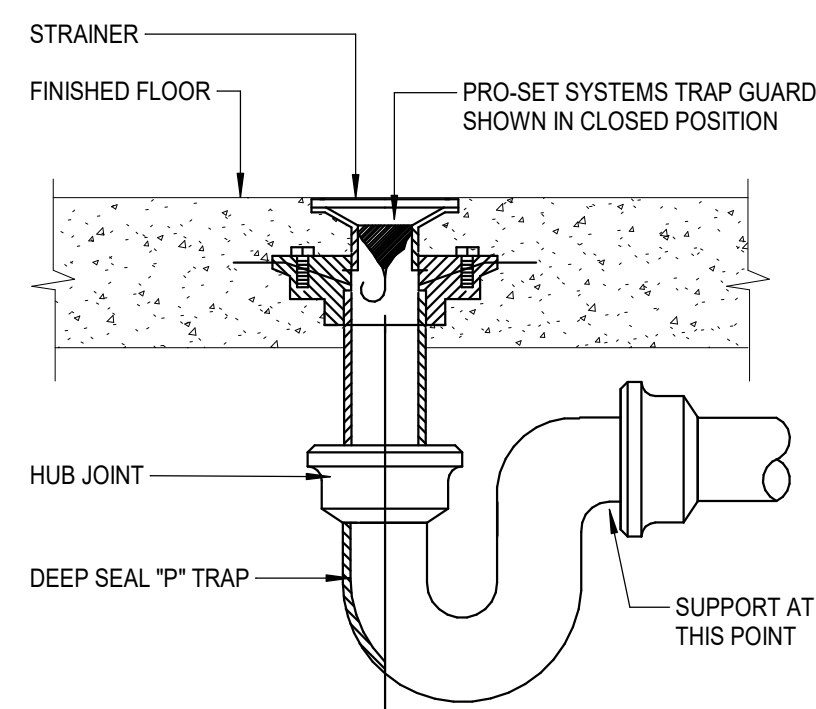
4 FLOOR SINK
SCALE: NONE



NOTES:

1. TRAP GUARD SHALL BE FACTORY FITTED TO MATCH EACH HUB DRAIN BY SIZE, MODEL, AND MANUFACTURER.
2. INSTALLATION OF TRAP GUARD TO BE IN ACCORDANCE WITH MANUFACTURER'S RECOMMENDATIONS.
3. INSERT TRAP GUARD ONLY AFTER FINAL RODDING OF DRAINS. INSTALL TRAP GUARD WITH CLEAR SILICONE CAULK FOR GAS TITE SEAL. FOR DRAIN RODDING AFTER INSTALLATION, INSERT SEWER TAPE THROUGH LIGHTLY GREASED 1-1/2" PVC PIPE TO PROTECT TRAP GUARD.

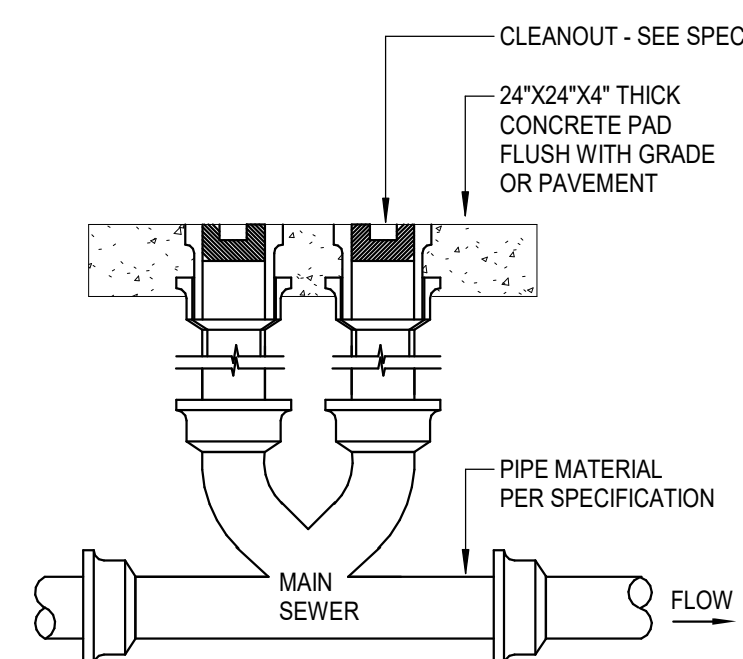
5 HUB DRAIN DETAIL
SCALE: NONE



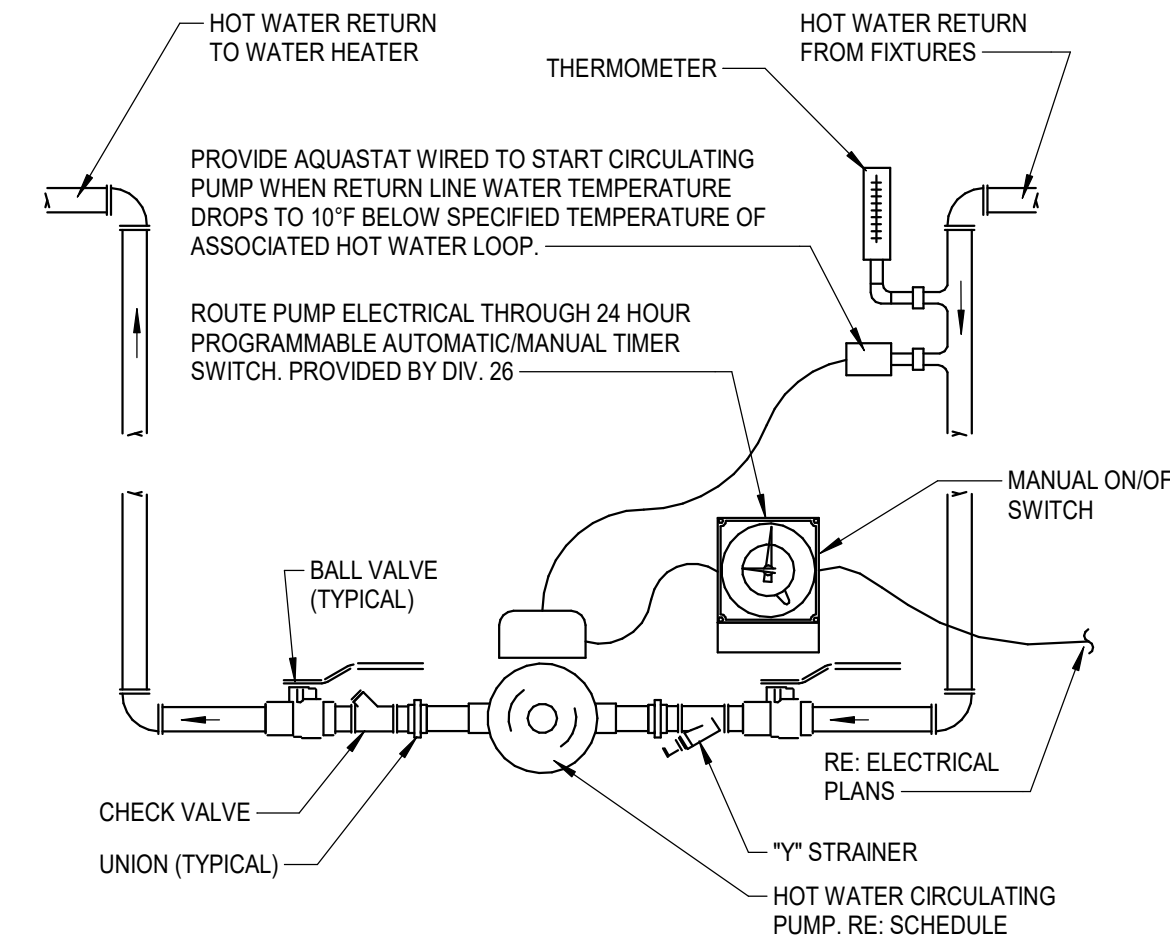
NOTES

1. TRAP GUARD SHALL BE FACTORY FITTED TO MATCH EACH FLOOR DRAIN (AND FLOOR SINK) BY SIZE, MODEL, AND MANUFACTURER.
2. CONTACT LOCAL REP OR MANUFACTURER FOR CORRECT MODEL NUMBER.
3. FLOOR SINK TRAP GUARD INSTALLATION IS SIMILAR.
4. INSTALLATION OF TRAP GUARD TO BE IN ACCORDANCE WITH MANUFACTURER'S RECOMMENDATIONS.
5. INSERT TRAP GUARD ONLY AFTER FINAL RODDING OF DRAINS. INSTALL TRAP GUARD WITH CLEAR SILICONE CAULK FOR GAS TITE SEAL. FOR DRAIN RODDING AFTER INSTALLATION, INSERT SEWER TAPE THROUGH LIGHTLY GREASED 1-1/2" PVC PIPE TO PROTECT TRAP GUARD.

6 TRAP SEAL PROTECTION
SCALE: NONE

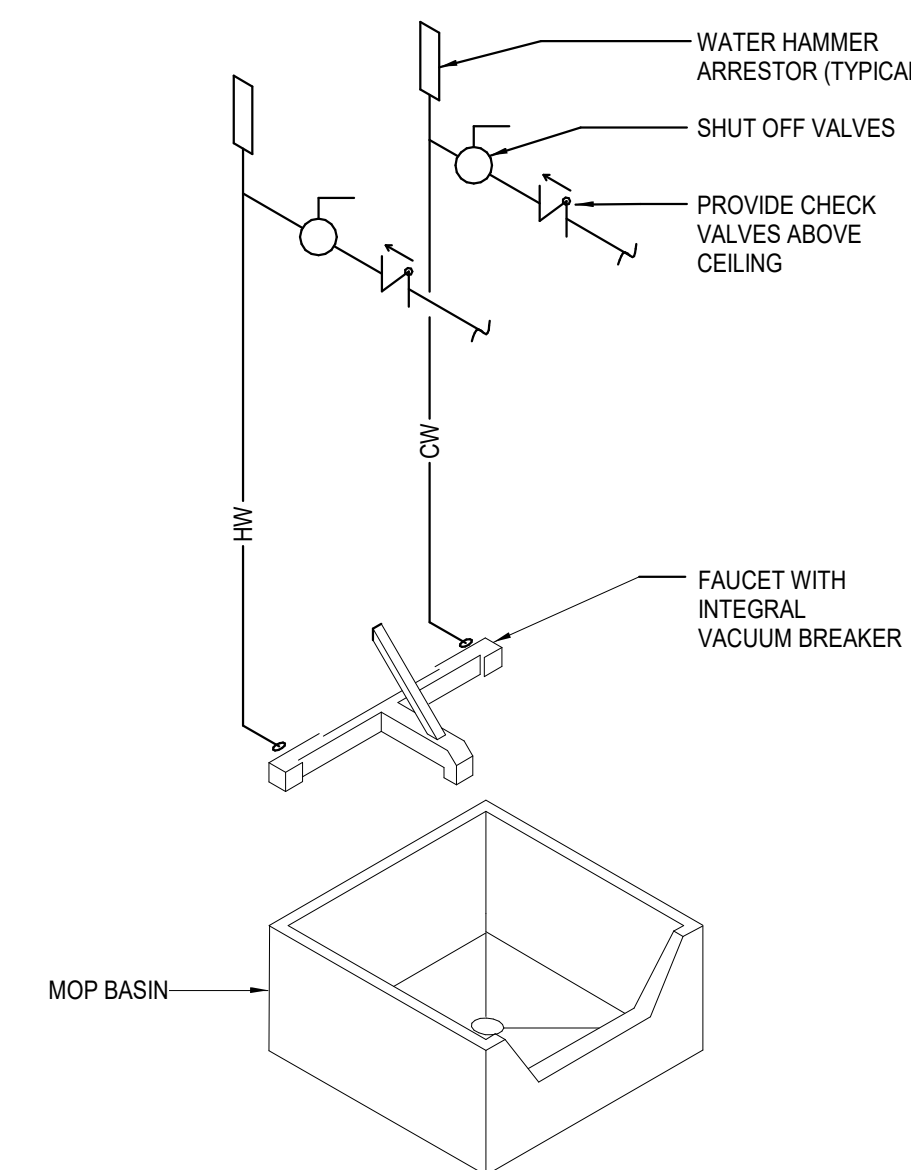


7 TWO-WAY EXTERIOR CLEANOUT
SCALE: NONE

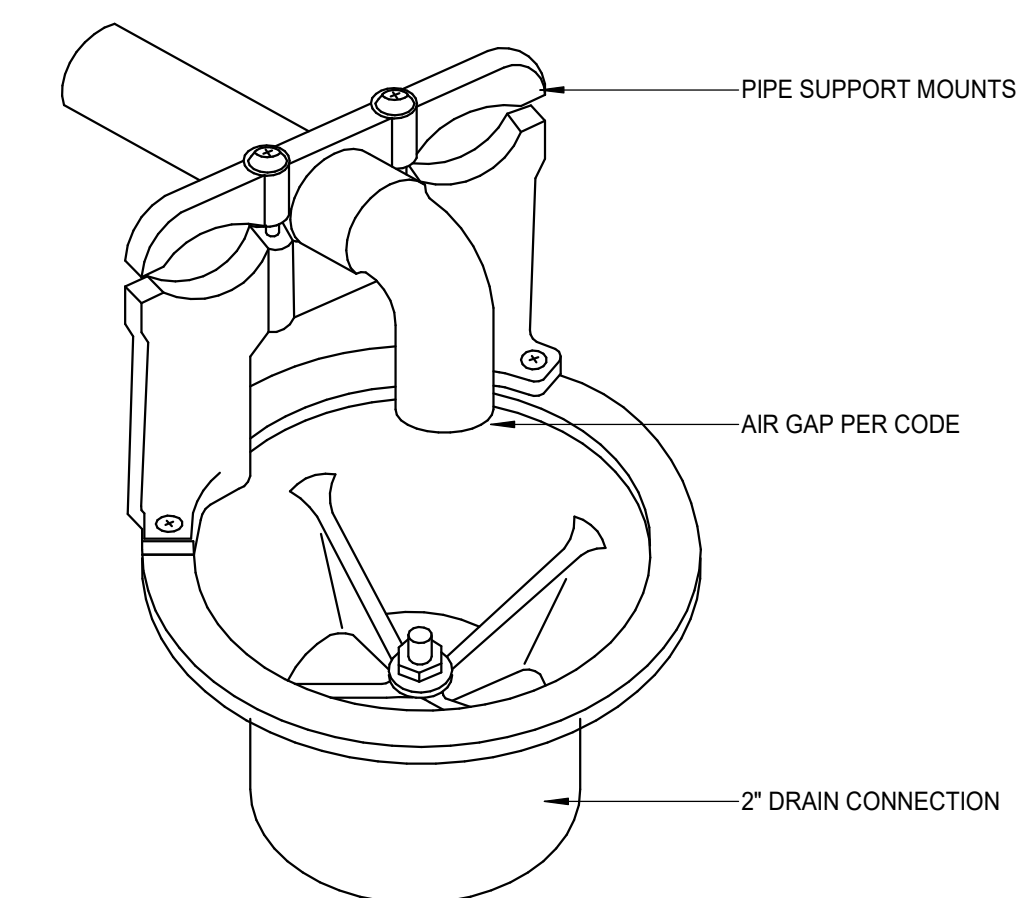


NOTE: MOUNT AT 54"-60" A.F.F. UNLESS NOTED OTHERWISE ON PLANS

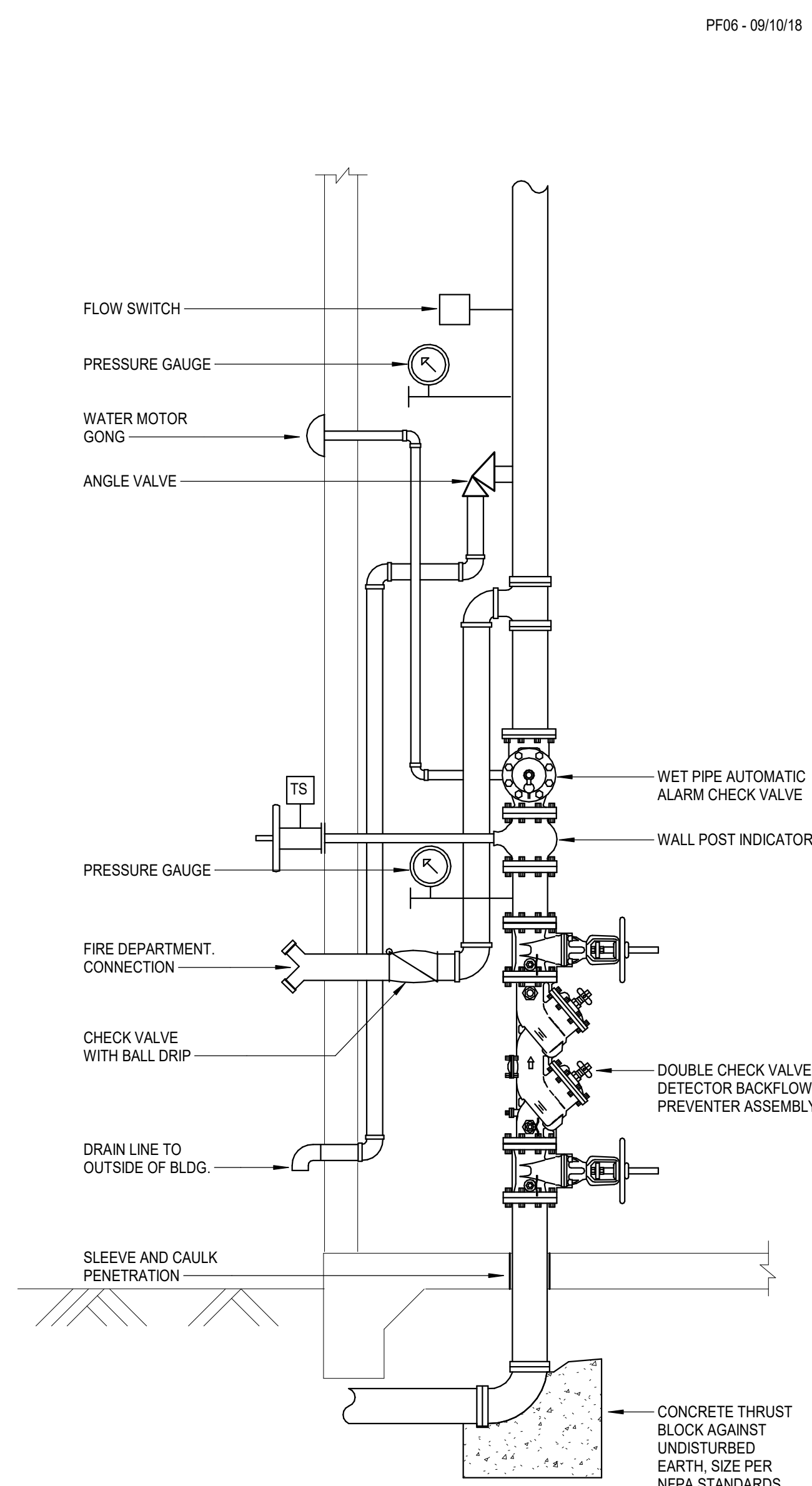
8 HOT WATER CIRCULATING PUMP
SCALE: NONE



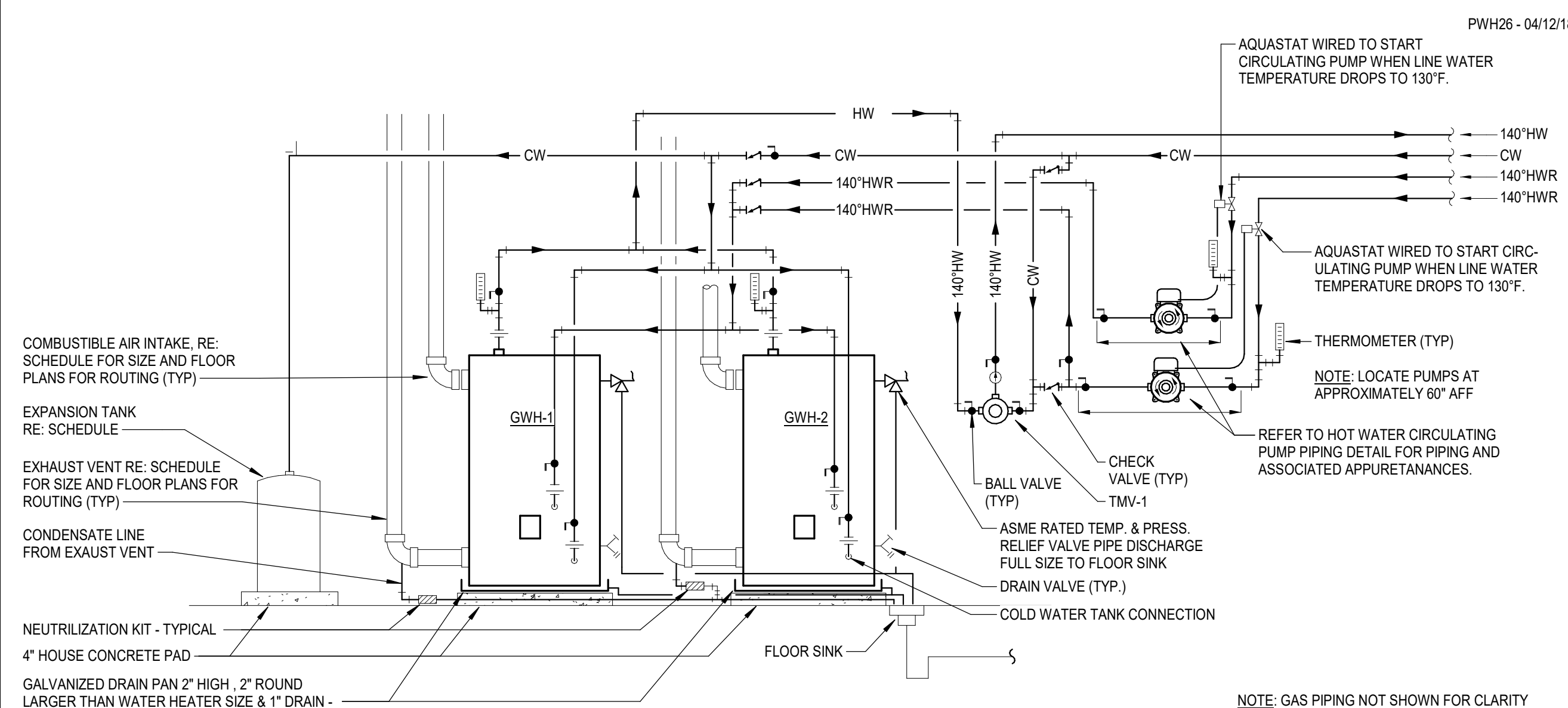
9 MOP SINK
SCALE: NONE



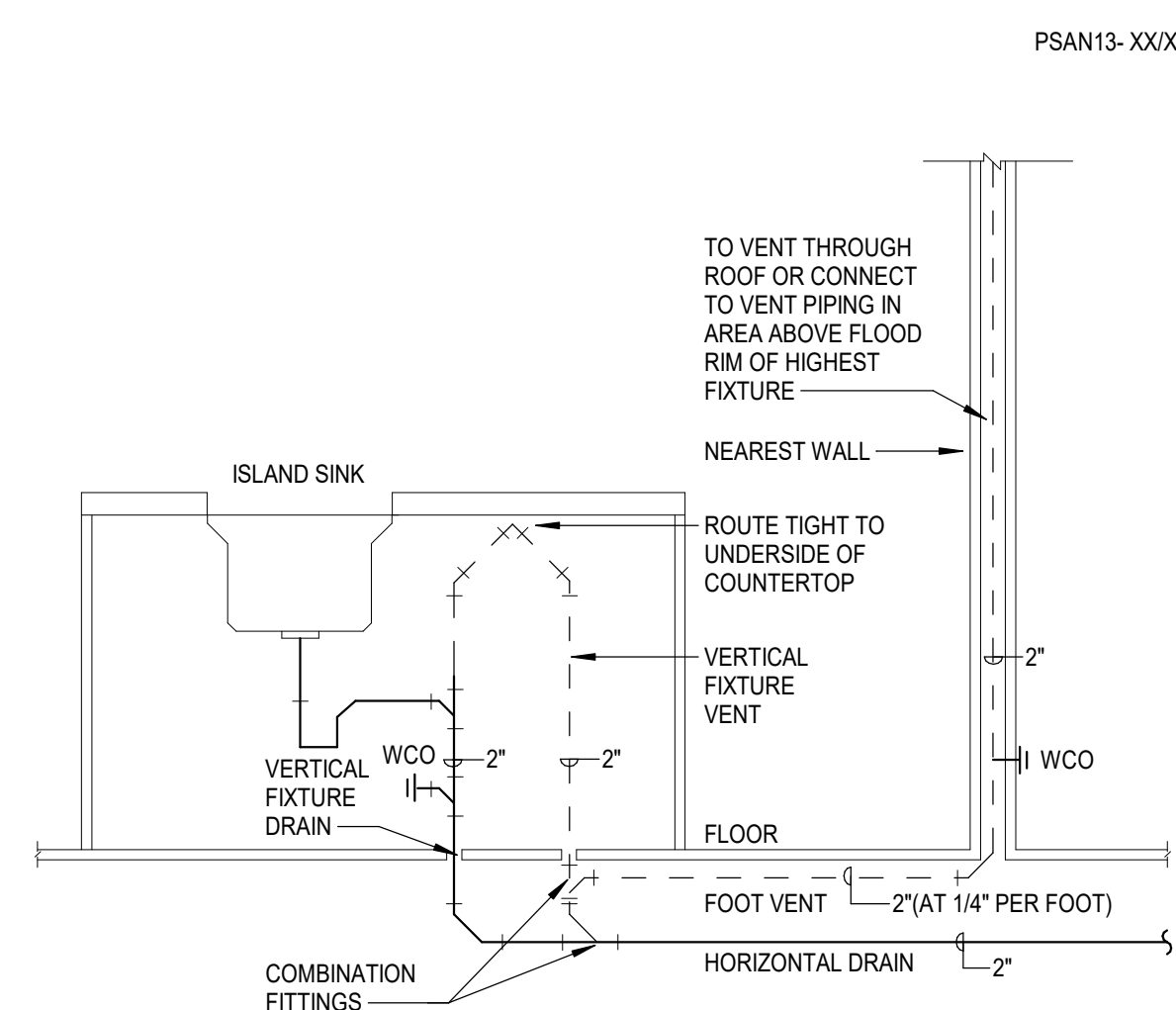
10 TRU-GAP FITTING
SCALE: NONE



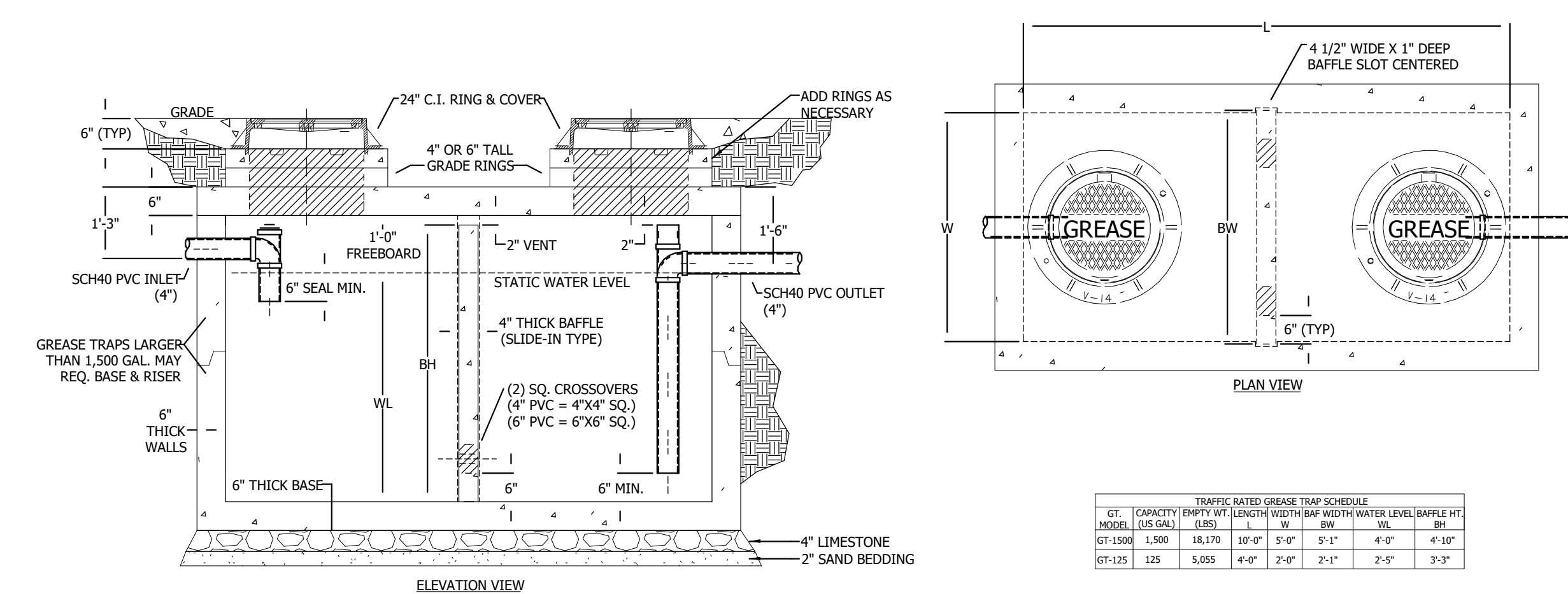
DOUBLE CHECK VALVE DETECTOR
BACKFLOW-FIRE



12 DOMESTIC GAS WATER HEATER PIPING
SCALE: NONE



14 TYPICAL ISLAND SINK PIPING
SCALE: NONE



SPECIFICATIONS

1. CONCRETE: CLASS 1/II CONCRETE W/ DESIGN STRENGTH OF 5,000 PSI AT 28 DAYS. UNIT IS OF MONOLITHIC CONSTRUCTION AT FLOOR, FIRST STAGE OF WALL W/ SECTIONAL RISER TO REQUIRED DEPTH. (BAFFLE IS SLIDE-IN TYPE)
2. REINFORCEMENT: GRADE 60 REINFORCED W/ STEEL REBAR CONFORMING TO ASTM A615 ON REQUIRED CENTERS OR EQUAL.
3. C.I. CASTINGS: MANHOLE FRAMES, COVERS OR GRATES ARE MANUFACTURED OF GRAY CAST IRON CONFORMING TO ASTM A48 CLASS 30. MANHOLE SHALL BE NOMINAL 24" DIAMETER AND BE TRAFFIC DUTY.

13 GREASE INTERCEPTOR DETAIL