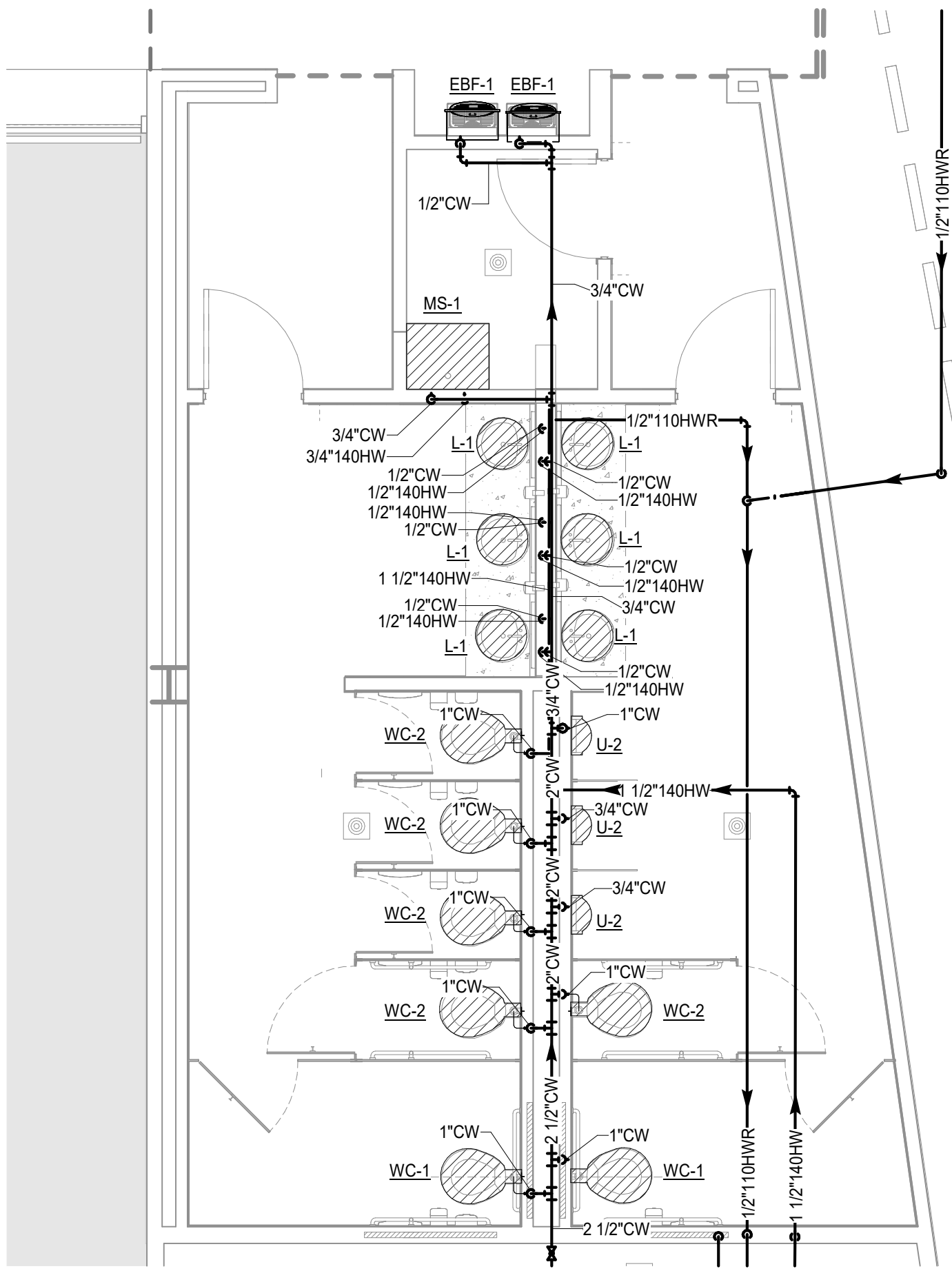


2 THIRD FLOOR COMMON RESTROOMS SANITARY
Scale: 1/4" = 1'-0"



1 THIRD FLOOR COMMON RESTROOMS DOMESTIC WATER SUPPLY
Scale: 1/4" = 1'-0"

PLUMBING GENERAL NOTES

1. HOT WATER IS PROVIDED AND CIRCULATED AT 140° F LIMITED AT THE CENTRAL PLANT VIA A MASTER MIXING VALVE IN ORDER TO HELP ELIMINATE DEVELOPEMENT OF LEGIONELLA IN DOMESTIC HOT WATER SYSTEM.

2. HOT WATER TEMPERATURE IS REDUCED FROM 140° F TO 110° F VIA INDIVIDUAL MIXING VALVES AT EACH SINK / LAVATORY, REFER TO PLUMBING FIXTURE SCHEDULE ON SHEET P401.

3. FIXTURES USED FOR FOOD SERVICE (KITCHEN) UTILIZE 140° F.