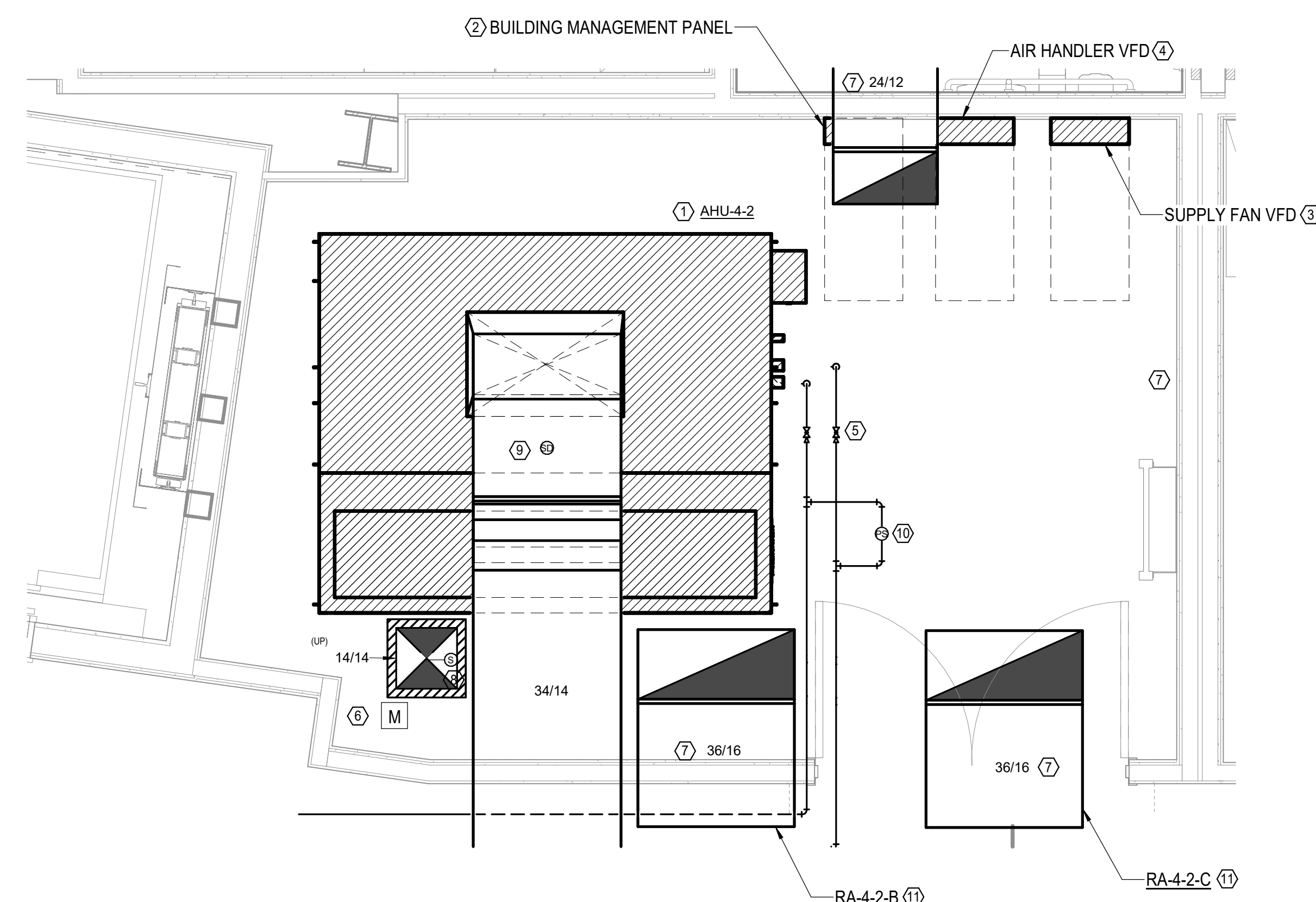


MECHANICAL KEYED NOTES

1. PROVIDE AND INSTALL NEW AIR HANDLER. TRANSITION CHILLED PIPING AS REQUIRED FOR CONNECTIONS TO AIR HANDLER (VALE INSTALLED HIGH NEAR MAIN PIPING TAP). COORDINATE EXACT REQUIREMENT FOR DUCT CONNECTION TO NEW UNIT. ROUTE UNITS FULL SIZE INSULATED (2" MIN) LINES TO FLOOR OR ROOF. PROVIDE 10' MIN. CLEARANCE FROM TOP OF UNIT IF PRIMARY DRAIN FALS. MAINLINE MANUFACTURERS RECOMMENDED CLEARANCE AROUND UNIT. PROVIDE EXACT FINAL CONNECTION WITH CONTROLS CONTRACTOR. REFER TO SCHEDULE AND DETAILS FOR MORE INFORMATION.
2. PROVIDE AND INSTALL BUILDING MANAGEMENT SYSTEM PANEL (BMS) IN MECHANICAL ROOM. COORDINATE EXACT MOUNTING LOCATION TO MAINTAIN PROPER CLEARANCES RECOMMENDED BY MANUFACTURER.
3. PROVIDE AND INSTALL SUPPLY FAN VARIABLE FREQUENCY DRIVE (VFD) IN MECHANICAL ROOM. COORDINATE EXACT MOUNTING LOCATION TO MAINTAIN PROPER CLEARANCES RECOMMENDED BY MANUFACTURER. VFD SHALL MODULATE BASED UPON DUCT MOUNTED, ADJUSTABLE PRESSURE SENSOR.
4. PROVIDE AND INSTALL AIR HANDLER VARIABLE FREQUENCY DRIVE (VFD) IN MECHANICAL ROOM. COORDINATE EXACT MOUNTING LOCATION TO MAINTAIN PROPER CLEARANCES RECOMMENDED BY MANUFACTURER.
5. PROVIDE AND INSTALL NEW CHILLED WATER ISOLATION VALVES LOCATED HIGH IN SPACE TO FACILITATE UNIT REPLACEMENT SERVICE.
6. PROVIDE AND INSTALL NEW VENTURIZED DAMPER. DAMPER TO BE INTERLOCKED WITH ASSOCIATED MECHANICAL EQUIPMENT OPERATION. DAMPER TO BE CLOSED WHEN UNIT IS 60°F. FIELD VERIFY EXACT LOCATION.
7. NEW TRANSFER AIR DUCT ACROSS WALL TO DECK. MINIMUM SIZE OF 24" BY 12" UNLESS OTHERWISE INDICATED ON PLAN. REFER TO DETAILS.
8. PROVIDE AND INSTALL NEW DIFFERENTIAL PRESSURE SENSOR IN OUTSIDE AIR DUCT. INTERLOCK CONTROL OF SUPPLY FAN VFD.
9. PROVIDE AND INSTALL NEW SMOKE DETECTOR. SMOKE DETECTOR SHALL CONSIST OF A CLEAR MOLDED PLASTIC ENCLOSURE (OR REMOVED MOUNTED LED STATUS INDICATOR SHALL BE PROVIDED NEXT TO THE SMOKE DETECTOR) WITH INTEGRAL KNOCKOUTS TO PROVIDE VISUAL VIEWING OF DETECTOR SENSOR FOR SMOKE SENSOR. DETECTOR SHALL BE MOUNTED TO THE TOP OF THE DETECTOR ENCLOSURE PROVIDED WITH GASKET SEAL TO INSURE PROPER SEATING OF THE HOUSING TO THE ASSOCIATED DUCTWORK. EACH UNIT'S SAMPING TUBES SHALL EXTEND THE WIDTH OF THE DUCT AND BE PROVIDED WITH TUBING TO REDUCE THE RISK OF VIBRATION. DETECTOR SHALL BE PROVIDED WITH A CONNECTION WITH NATIONAL FIRE PROTECTION ASSOCIATION (NFPA) SECTION NFPA 72, NFPA 90A, NFPA 101, ACCEPTABLE MANUFACTURERS: AUTOCALL, SIMPLEX, SIEMENS, NOTIFIER, GEMWELL, PYROTONICS. TYPICAL OF ALL TYPES.
10. PROVIDE AND INSTALL NEW DIFFERENTIAL PRESSURE SENSOR. DAMPER TO BE INTERLOCKED WITH BUILDING MANAGEMENT SYSTEM. COORDINATE EXACT MOUNTING LOCATION WITH CONTROLS CONTRACTOR.
11. PROVIDE AN INSTALL DUCT SILENCER IN TRANSFER/RETURN DUCT BOOT. REFER TO SCHEDULE AND DETAILS.

MECHANICAL GENERAL NOTES

- | | |
|----|---|
| 1 | ALL DUCT SIZES SHOWN ARE INSIDE CLEAR, INCREASE ACCORDINGLY WHERE INTERIOR LINER IS SHOWN OR SPECIFIED. |
| 2 | COORDINATE IN THE FIELD THE EXACT LOCATION OF ALL CEILING MOUNTED GRILLES AND DIFFUSERS WITH LIGHT FIXTURES AND (ARCHITECT'S) REFLECTED CEILING PLAN. |
| 3 | CONTRACTOR TO PROPERLY SEAL ALL NEW OR MODIFIED DUCTWORK. |
| 4 | SHOP PRINT ALL MISCELLANEOUS BRACKET, CLAMP, AND HANGERS UNLESS GALVANIZED OR STAINLESS STEEL. ALL EXTERIOR BRACKETS, CLAMPS, AND HANGERS SHALL BE HOT DIPPED GALVANIZED. COAT ALL CUT ENDS AND WELDS WITH "ZRC" COAT GALVANIZING COMPOUND. |
| 5 | FIELD COORDINATE WITH STRUCTURAL, OFFSET AND TRANSITION DUCTWORK AS REQUIRED. |
| 6 | THESE CONSTRUCTION DETAILS ARE NOT TO BE USED AS A NECESSARILY REFLECT ACTUAL DIMENSIONS. IT IS THE RESPONSIBILITY OF THE CONTRACTOR TO FIELD-VERIFY ALL DIMENSIONS AND COORDINATE PLACEMENT OF ALL EQUIPMENT AND ROUTING OF ALL PIPING AND DUCT SYSTEMS. |
| 7 | ALL CONSTRUCTION IS TO CONFORM TO MORE STRINGENT OF PLAN, SPECIFICATION REQUIREMENTS AND CODES. CONFORM TO THE MOST STRINGENT OF ALL APPLICABLE STANDARDS AS A MINIMUM WHERE NO OTHER SPECIFICATIONS OR CODE REQUIREMENTS APPLY. |
| 8 | RETURN AIR IS THROUGH RETURN GRILLES AND BACK THROUGH RETURN AIR OPENINGS TO THE MECHANICAL ROOM. CONTRACTOR TO MAINTAIN RETURN AIR PATH. PROVIDE OPENINGS OR RETURN AIR GRILLES AS REQUIRED. |
| 9 | ALL DUCTWORK 15" FEET DOWNSTREAM OF AHU'S AND 10' FEET DOWNSTREAM OF FFB'S TO BE PROVIDED WITH KNAUF PERFORMANCE [®] INTERNAL LINER OR APPROVED ALTERNATE. |
| 10 | ALL TRANSFER AIR DUCTS/BOOTS TO BE PROVIDED WITH INTERNAL LINING. |
| 11 | PROVIDE RETURN AIR BOOT/ON ALL RETURN GRILLES FOR OFFICES, CONFERENCE ROOMS, ETC ON 4TH |



1 ENLARGED MECHANICAL PLAN - MECHANICAL ROOM 432

Scale: 1/2" = 1'-0"