

- MECHANICAL KEYED NOTES**
- 1 NEW COOLING/HEATING FAN POWERED BOX. PROVIDE UNIT WITH ISOLATION VALVES. REFER TO MECHANICAL PLANS FOR MORE INFORMATION.
 - 2 PROVIDE AND INSTALL NEW CHILLED WATER/HOT WATER FAN COIL UNIT. PROVIDE UNITS CHILLED WATER AND HOT WATER COIL WITH ISOLATION VALVES. REFER TO MECHANICAL PLANS FOR MORE INFORMATION.
 - 3 NEW CABINET EXHAUST FAN. REFER TO MECHANICAL PLANS FOR MORE INFORMATION.
 - 4 NEW WALL MOUNTED DX EVAPORATOR. REFER TO MECHANICAL PLANS FOR MORE INFORMATION.
 - 5 REFRIGERANT PIPING DOWN THROUGH CHASE TO FLOOR BELOW. FIELD VERIFY THE EXACT ROUTING IN FIELD. REFER TO MECHANICAL HYDRONIC PLANS FOR MORE INFORMATION.
 - 6 ROUTE NEW CHILLED/HOT WATER PIPING HIGH AND TIGHT TO STRUCTURE. FIELD VERIFY ALL ROUTING OF PIPING THROUGH SPACE IN COORDINATION WITH DUCTWORK, PIPING, ELECTRICAL, ETC... PROVIDE TRANSITIONS/ TURNS AS NECESSARY TO MAKE CONNECTIONS.
 - 7 REFER TO ENLARGED MECHANICAL ROOM PLAN FOR ALL MECHANICAL KEYED NOTES AND INFORMATION.
 - 8 REFER TO ENLARGED COOLING TOWER PLAN FOR ALL MECHANICAL KEYED NOTES AND INFORMATION.
 - 9 PROVIDE AND INSTALL NEW DIFFERENTIAL PRESSURE SENSOR. SENSOR TO BE INTERLOCKED WITH BUILDING MANAGEMENT SYSTEM. COORDINATE EXACT FINAL LOCATION WITH CONTROLS CONTRACTOR.

CONSULTANTS
Monsieur & Associates, LLC
CABDO Landscape Architecture, LLC
Fox Nease Engineering, Inc.
S&S O'Brien
Mechanical Design Group, Inc.
Electrical Design Group, Inc.
Specialty Architect

ASHE BROUSSARD | WEINZETTLE ARCHITECTS

TIPTON ASSOCIATES

ISSUE FOR BID
LOUISIANA STATE UNIVERSITY OF ALEXANDRIA
DOWNTOWN HEALTH SERVICES CENTER
800 JACKSON ST.
ALEXANDRIA, LA 71301

PROJECT # 2450-70798 WBS: F-19002488
ARCH PROJECT # 2023.20 / 1031.00-23
SITE ID: NEW SITE CODE: 4-40-023
DATE OCTOBER 10, 2023
Ashe Broussard Weinzettelle Architects, LLP
Tipton Associates APAC, A Joint Venture
301 Jackson Street, Suite 205
Alexandria, LA 71301

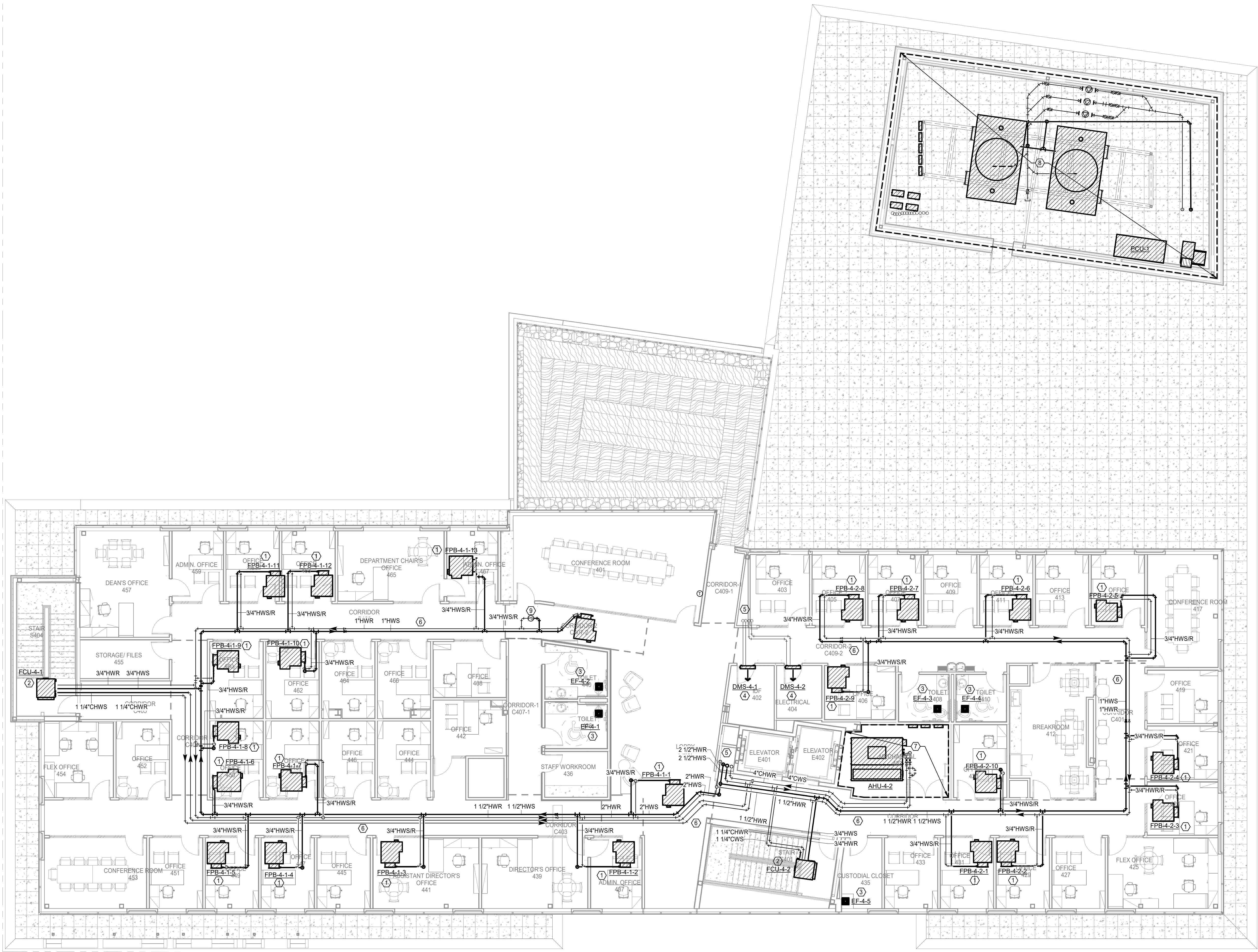
NO.	REVISION	DATE

STATE OF LOUISIANA
DOUGLAS CORREY, JR.
Professional Engineer
10/10/2025

FOURTH FLOOR
MECHANICAL
HYDRONIC PLAN

M114

- MECHANICAL GENERAL NOTES**
- 1 ALL DUCT SIZES SHOWN ARE INSIDE CLEAR. INCREASE ACCORDINGLY WHERE INTERIOR LINER IS SHOWN OR SPECIFIED.
 - 2 COORDINATE IN THE FIELD THE EXACT LOCATION OF ALL CEILING MOUNTED GRILLES AND DIFFUSERS WITH LIGHT FIXTURES AND ARCHITECT'S REFLECTED CEILING PLAN.
 - 3 CONTRACTOR TO PROPERLY SEAL ALL NEW OR MODIFIED DUCTWORK.
 - 4 SHOP PRIME ALL MISCELLANEOUS INTERIOR BRACKETS AND HANGERS UNLESS GALVANIZED OR STAINLESS STEEL. ALL EXTERIOR BRACKETS, CLAMPS, AND HANGERS SHALL BE HOT DIPPED GALVANIZED. COAT ALL CUT ENDS AND WELDS WITH ZINC COLD GALVANIZING COMPOUND.
 - 5 FIELD COORDINATE WITH STRUCTURAL. OFFSET AND TRANSITION DUCTWORK AS REQUIRED.
 - 6 THESE CONSTRUCTION DRAWINGS ARE DIAGRAMMATIC, AND DO NOT NECESSARILY REFLECT ACTUAL DIMENSIONS. IT IS THE RESPONSIBILITY OF THE CONTRACTOR TO FIELD VERIFY ALL DIMENSIONS AND COORDINATE PLACEMENT OF ALL EQUIPMENT AND ROUTING OF ALL PIPING AND/OR DUCT SYSTEMS.
 - 7 ALL CONSTRUCTION IS TO CONFORM TO MORE STRINGENT OF PLAN, SPECIFICATION REQUIREMENTS AND LOCAL CODES. CONFORM TO SMACNA HVAC CONSTRUCTION STANDARDS AS A MINIMUM WHERE NO OTHER SPECIFICATIONS OR CODE REQUIREMENTS APPLY.
 - 8 RETURN AIR IS THROUGH RETURN GRILLES AND BACK THROUGH RETURN AIR OPENINGS TO THE MECHANICAL ROOM. CONTRACTOR TO MAINTAIN RETURN AIR PATH. PROVIDE OPENINGS OR RETURN AIR BOOTS AS REQUIRED.
 - 9 ALL DUCTWORK 15 FEET DOWNSTREAM OF AHU'S AND 10 FEET DOWNSTREAM OF FPB'S TO BE PROVIDED WITH KNAUF PERFORMANCE+ INTERNAL LINER OR APPROVED EQUAL.
 - 10 ALL TRANSFER AIR DUCTS/BOOTS TO BE PROVIDED WITH INTERNAL LINING.
 - 11 PROVIDE RETURN AIR BOOTS ON ALL RETURN GRILLES FOR OFFICES, CONFERENCE ROOMS, ETC ON 4TH FLOOR.



1 FOURTH FLOOR MECHANICAL HYDRONIC PLAN
Scale: 1/8" = 1'-0"