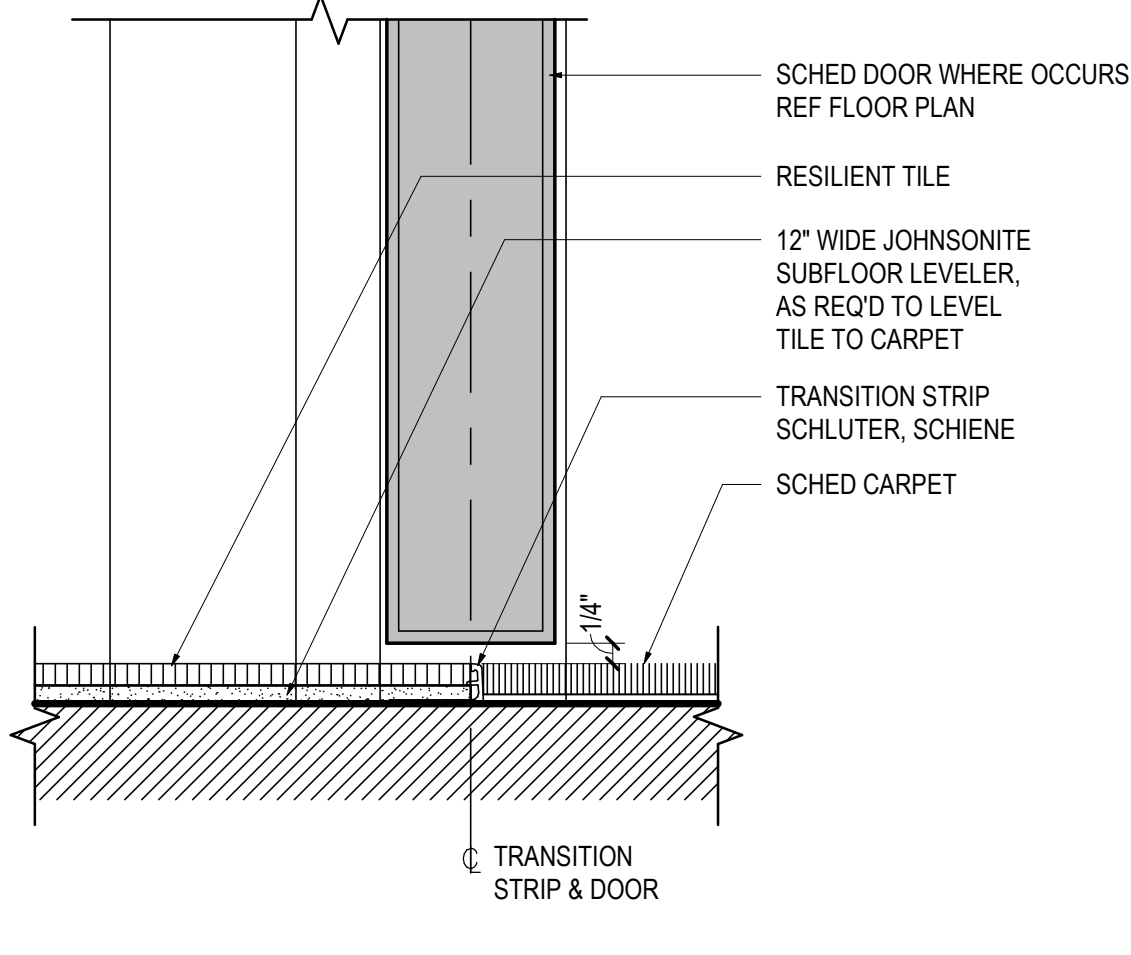
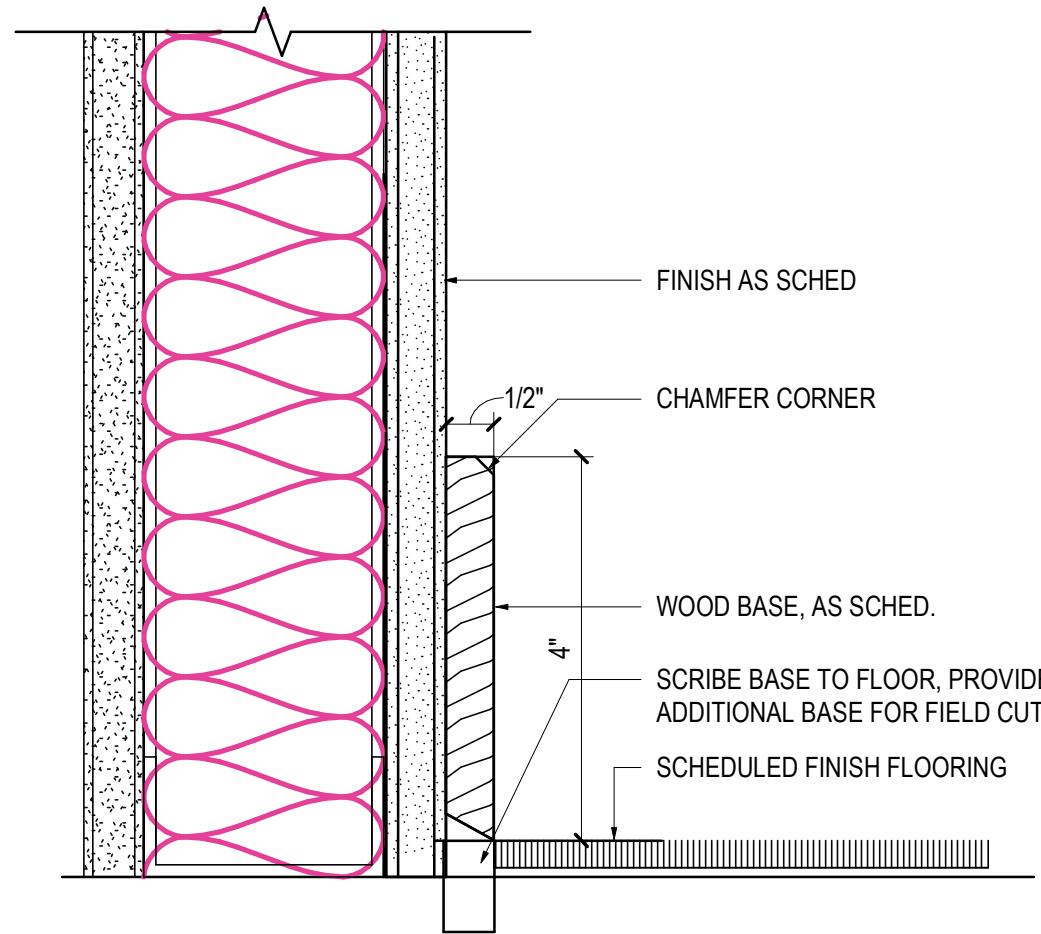


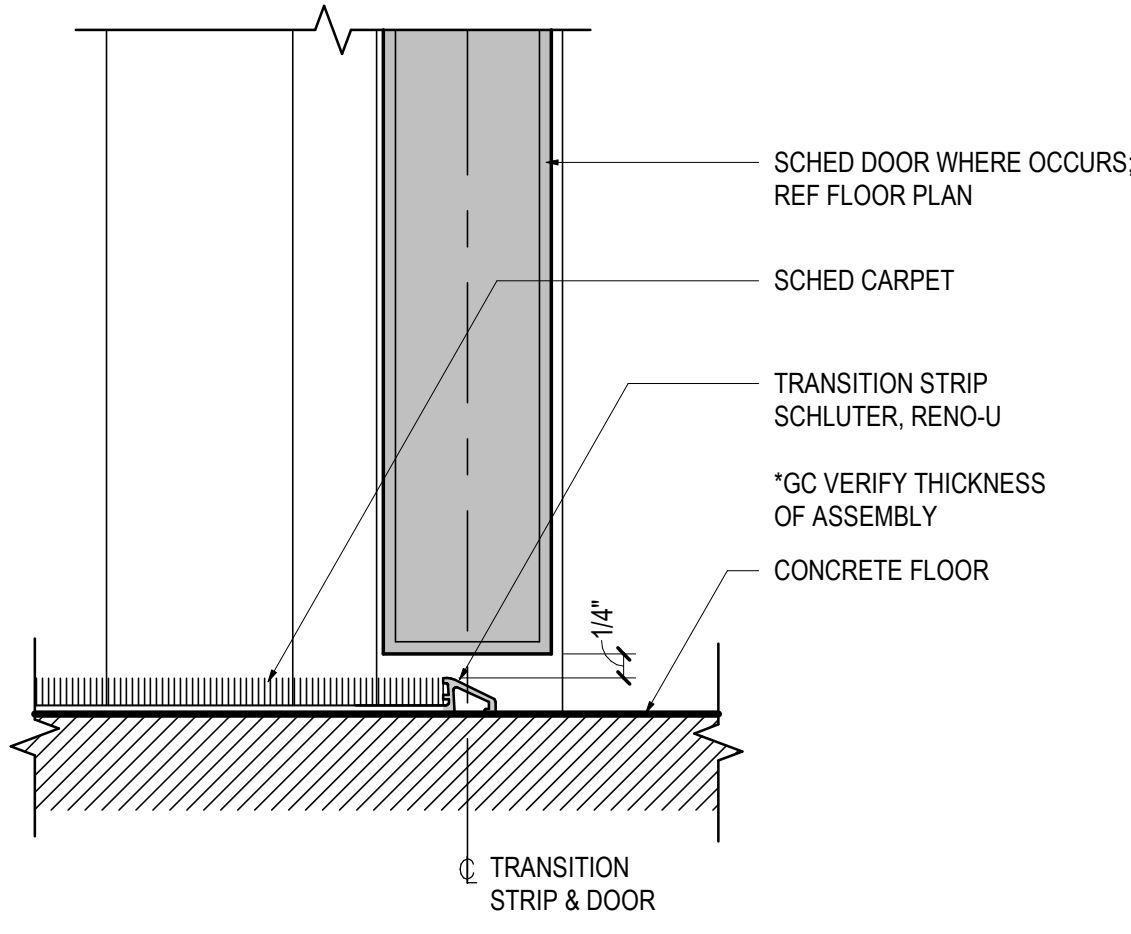
06 RESILIENT TO CONCRETE TRANSITION  
SCALE: 6" = 1'-0" REF: /



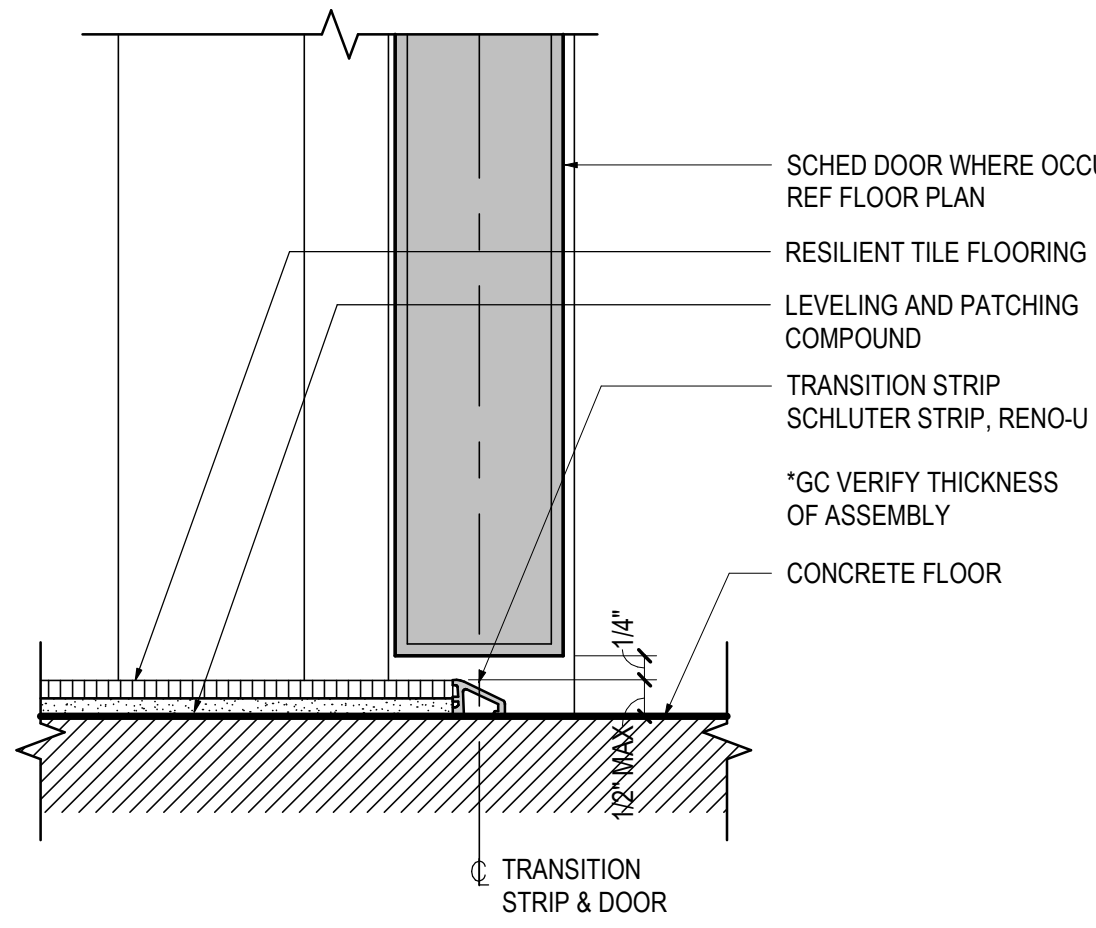
07 CARPET TO RESILIENT TRANSITION  
SCALE: 6" = 1'-0" REF: /



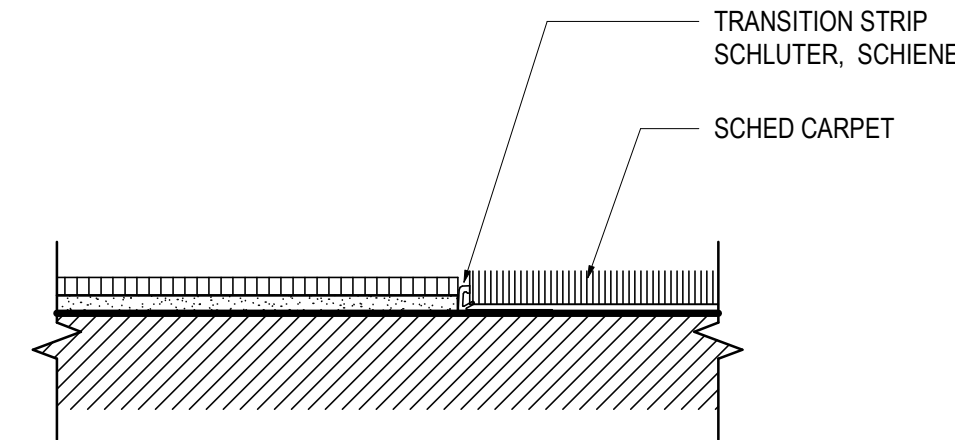
04 SURFACE APPLIED WOOD BASE  
SCALE: 6" = 1'-0" REF: /



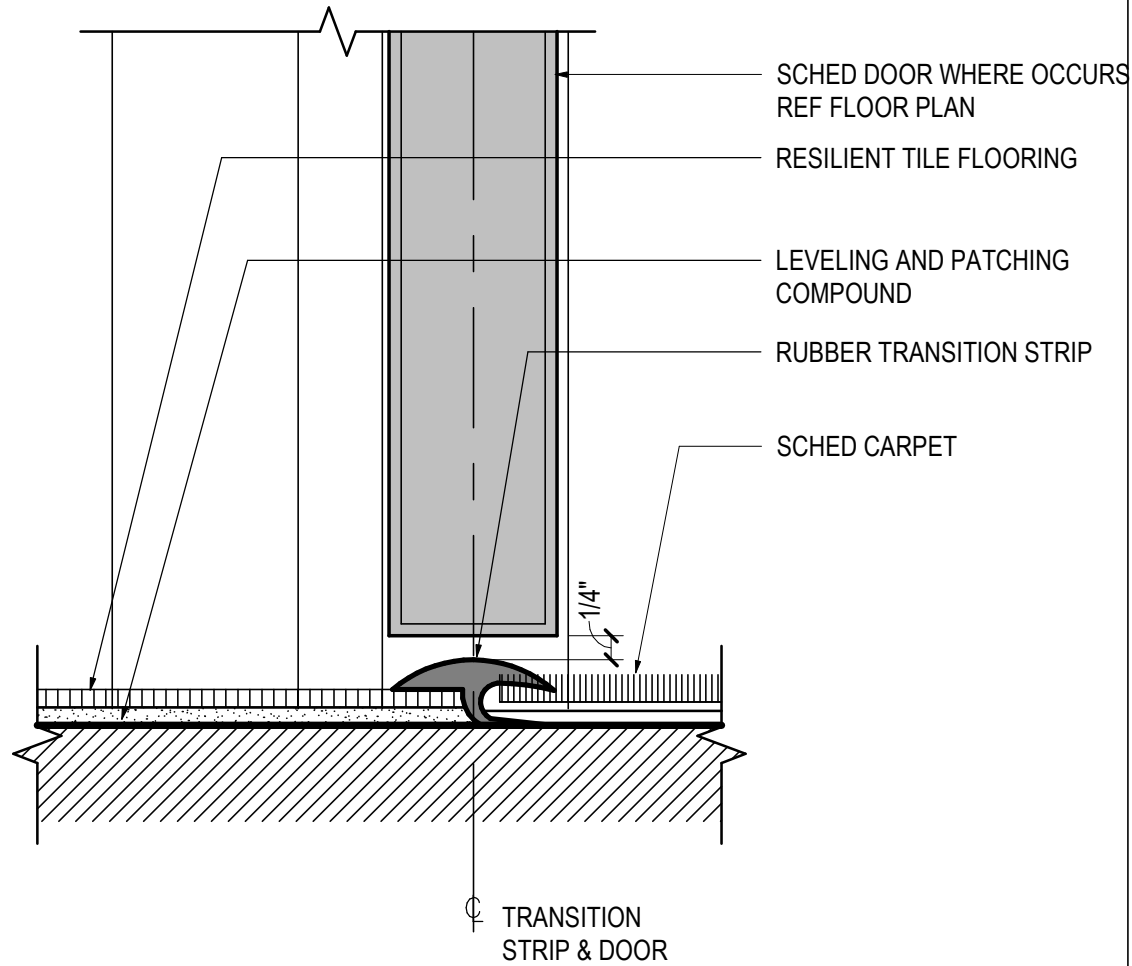
05 CARPET TO CONCRETE TRANSITION  
SCALE: 6" = 1'-0" REF: /



02 RESILIENT TO CONCRETE TRANSITION  
SCALE: 6" = 1'-0" REF: /



03 CARPET TO RESILIENT TRANSITION  
SCALE: 6" = 1'-0" REF: /



01 CARPET TO RESILIENT TRANSITION  
SCALE: 6" = 1'-0" REF: /

GENERAL NOTES

KEYNOTES