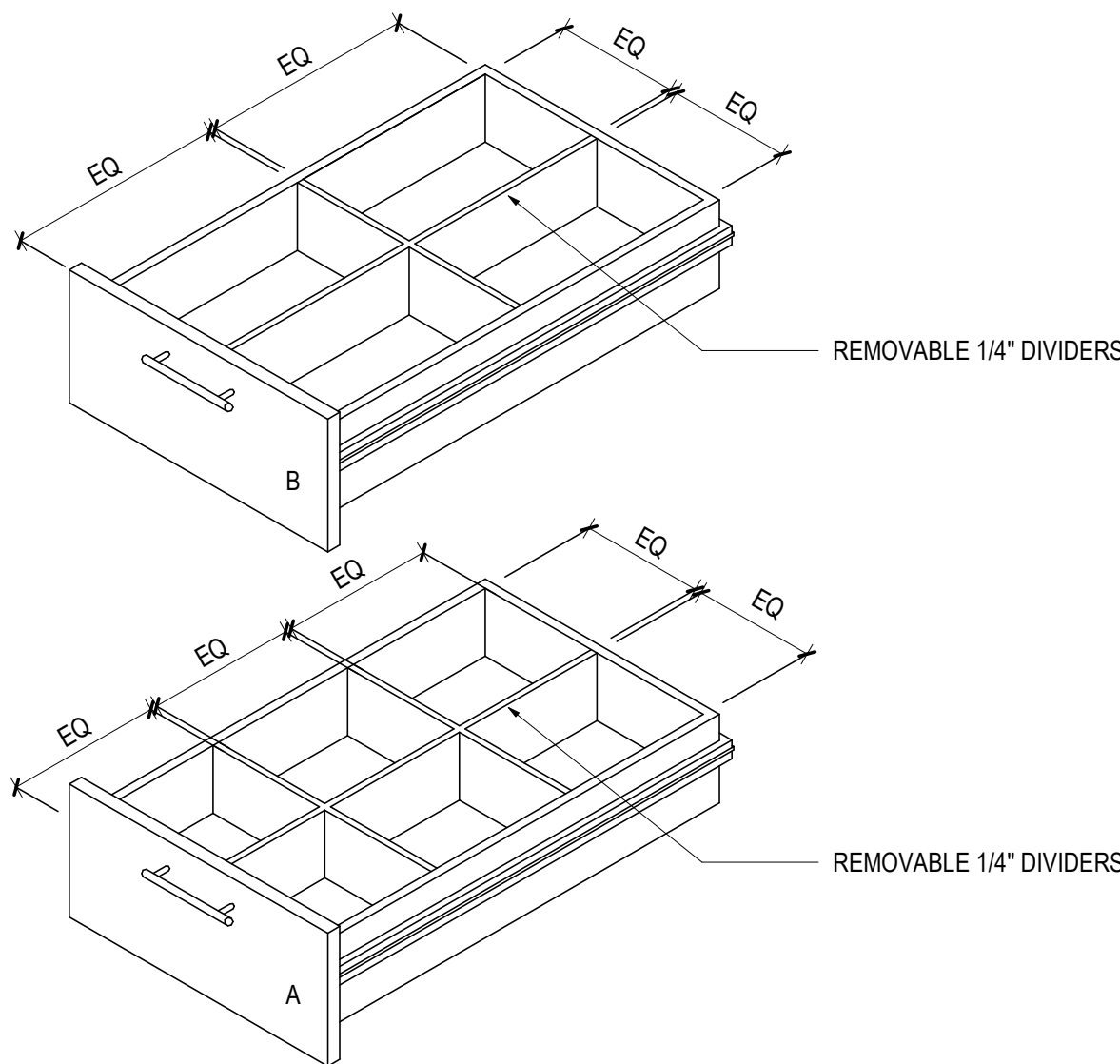


DOOR & DRAWER PULLS UNO:
PULL B, REF ELEV
DOUG MOCKETT, NO. DP3A, 3" WIDE TAB PULL
FINISH: SATIN CHROME (28D)

12 TYPICAL CABINET PULLS - TAB PULL

SCALE: 1" = 1'-0"

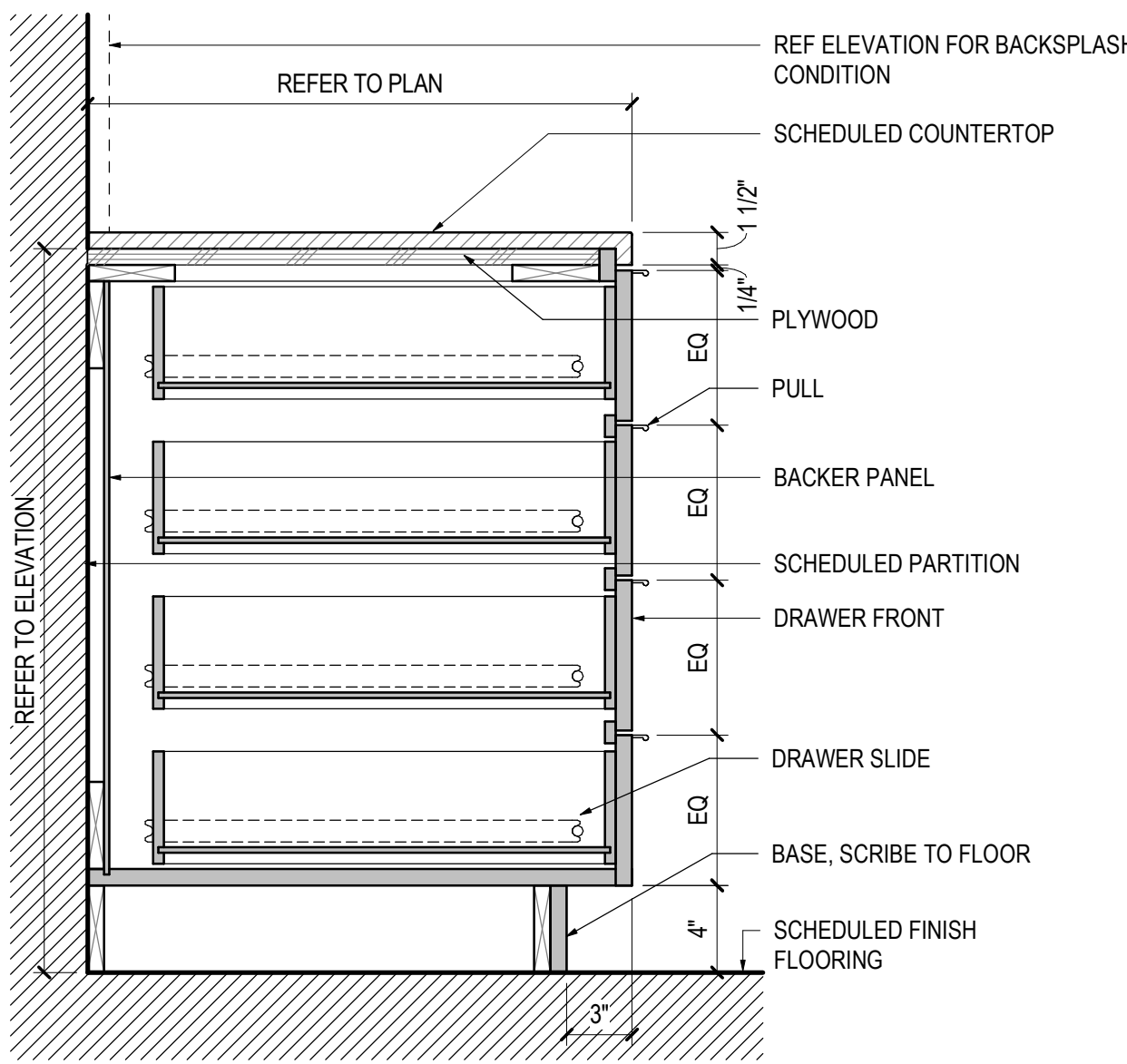
REF: /



08 CONDIMENT DRAWERS

SCALE: 1 1/2" = 1'-0"

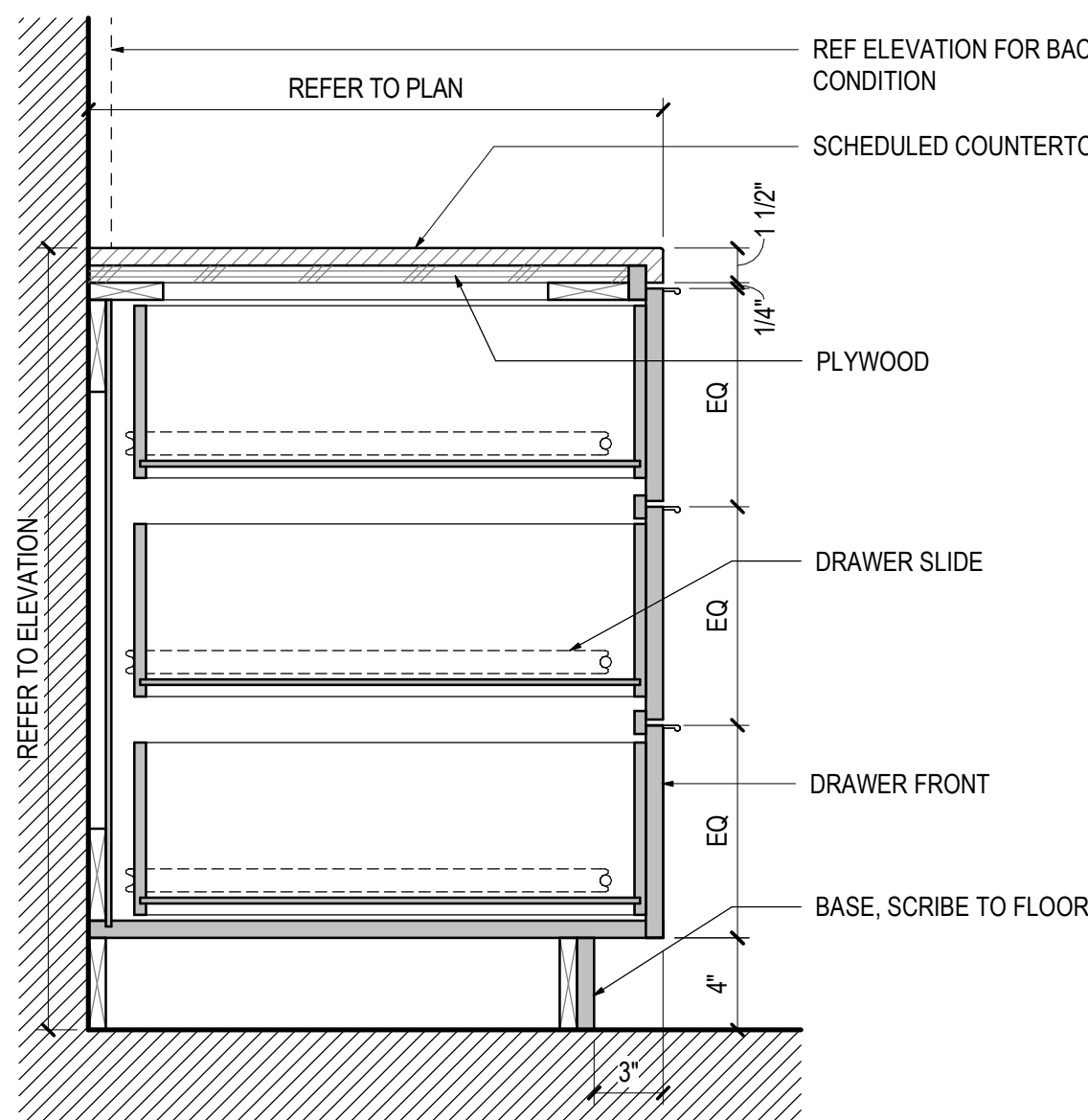
REF: /



13 BC - DRAWERS (4 EQ)

SCALE: 1 1/2" = 1'-0"

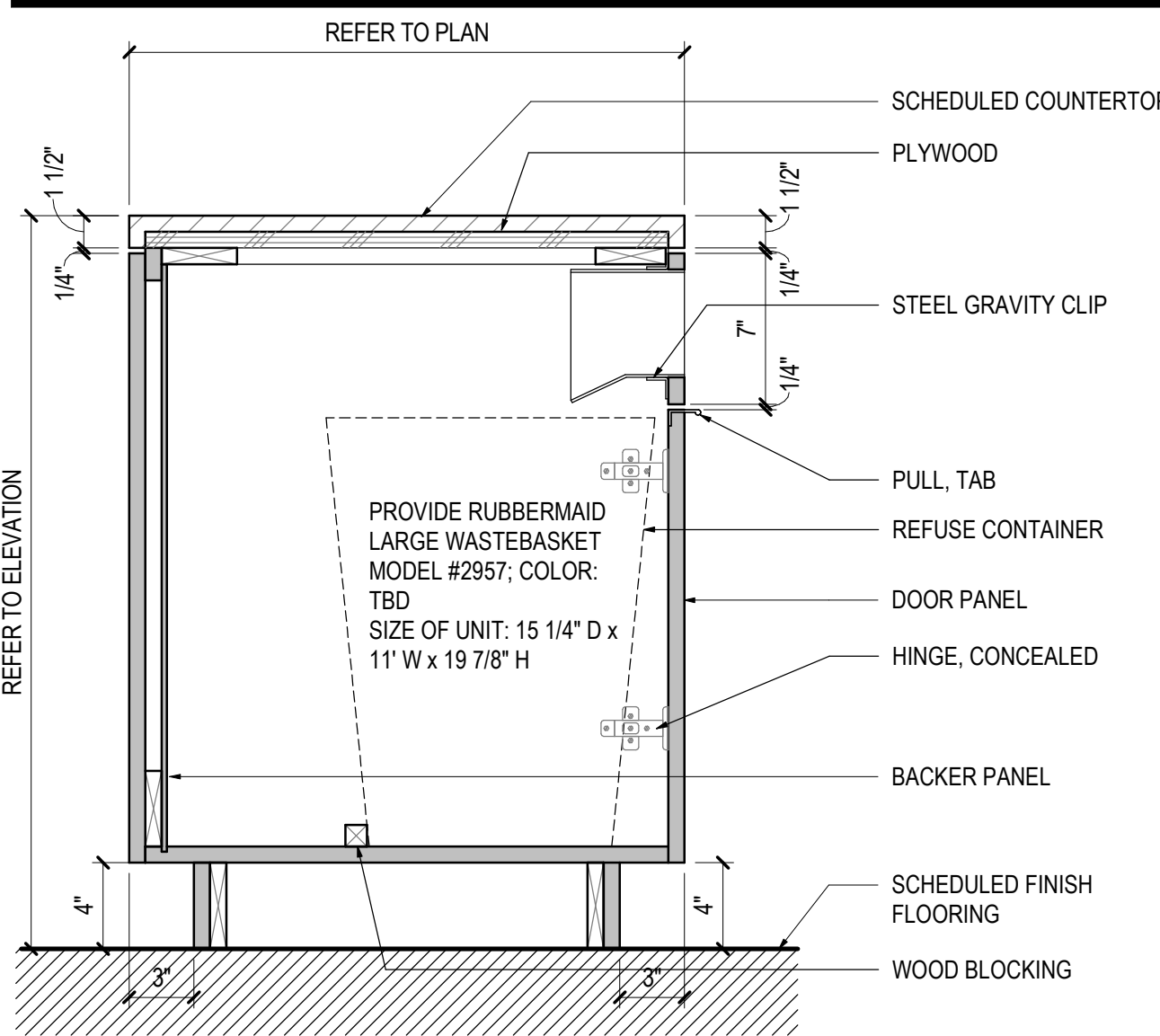
REF: 01 / A733



09 BC - DRAWERS (3 EQ)

SCALE: 1 1/2" = 1'-0"

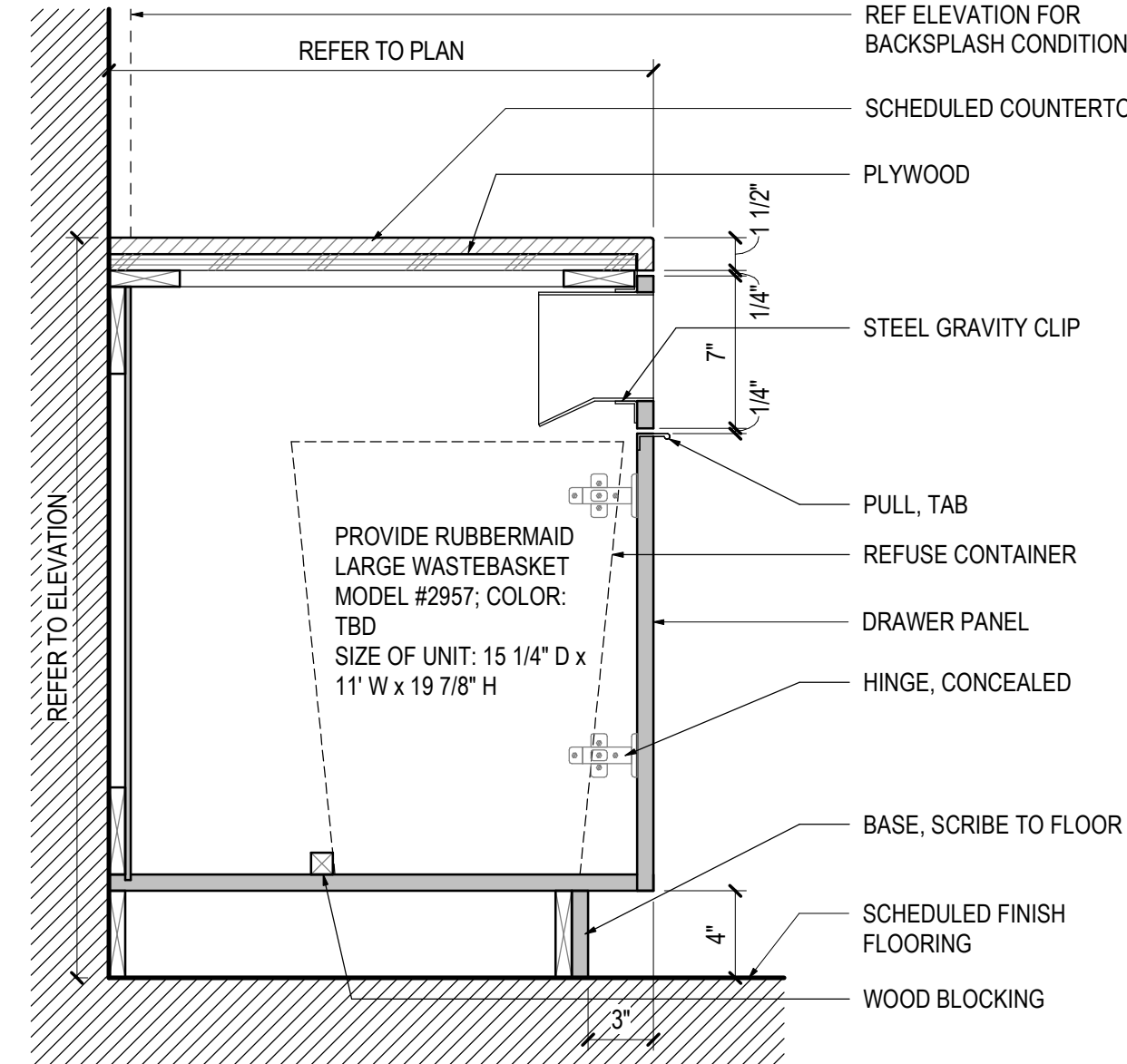
REF: 03 / A731



05 BC ISLAND - TRASH - DOOR GROMMET

SCALE: 1 1/2" = 1'-0"

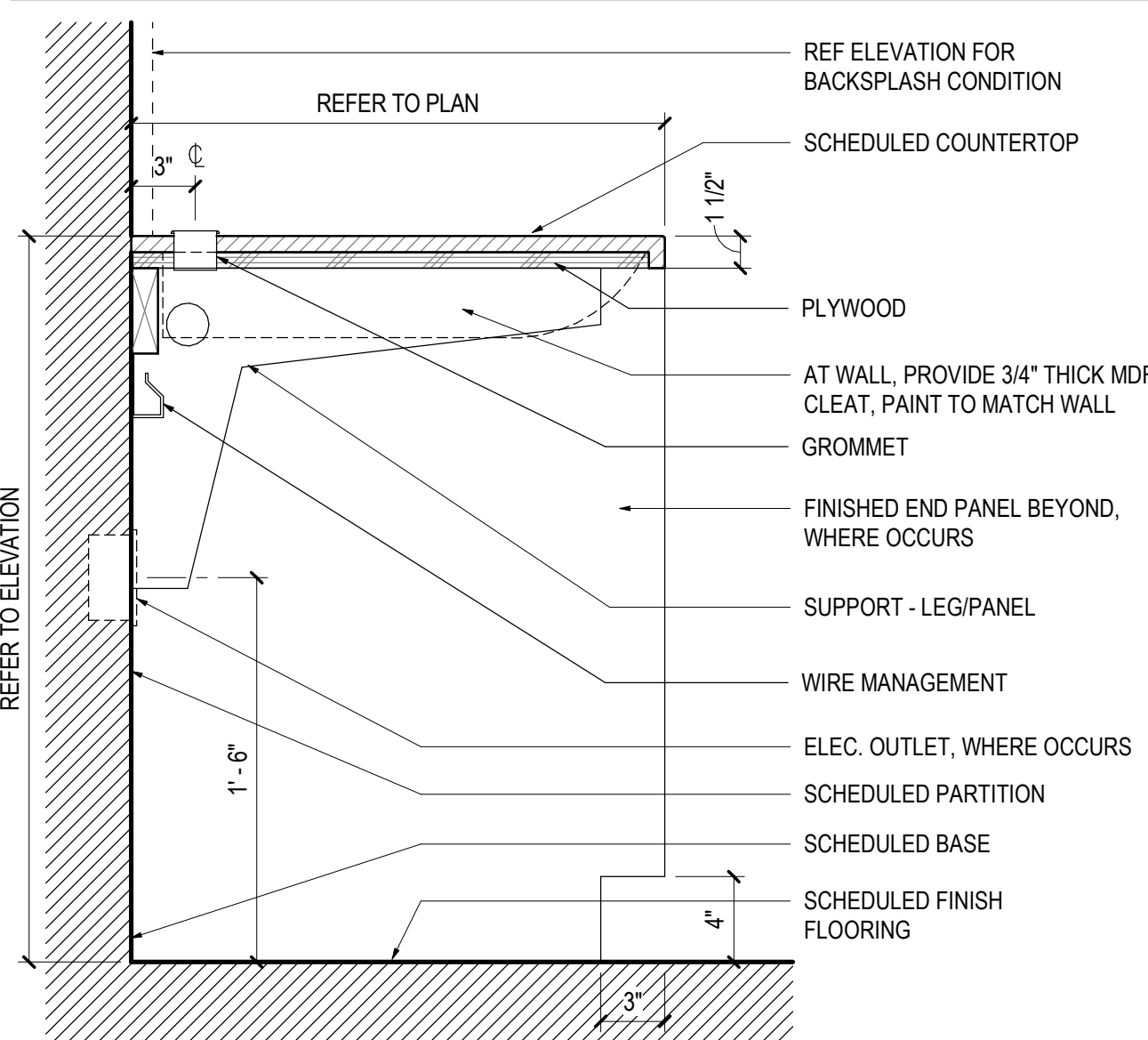
REF: 08 / A730



14 BC - TRASH - DOOR GROMMET

SCALE: 1 1/2" = 1'-0"

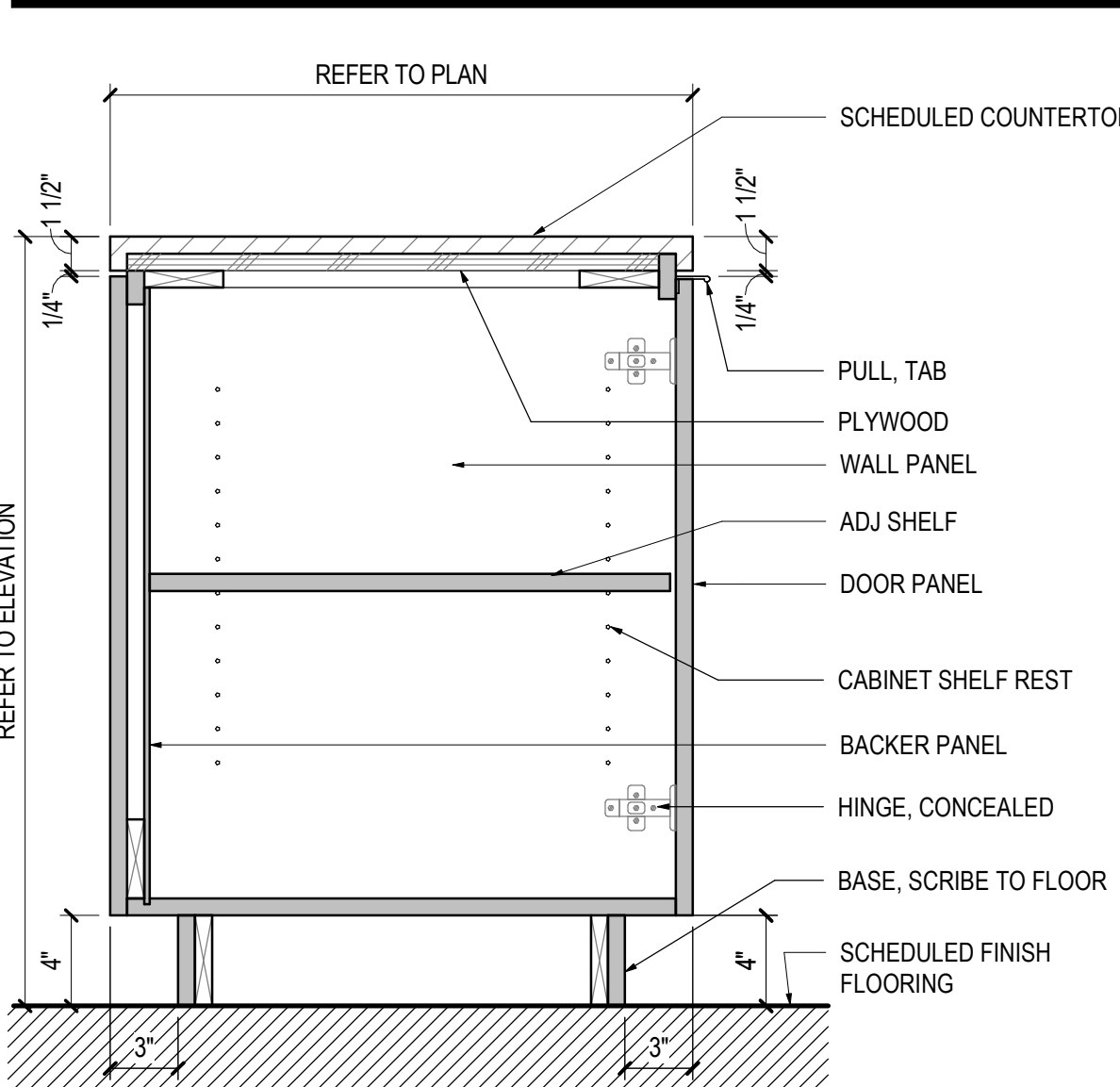
REF: 01 / A733



10 COUNTER W/ SUPPORT BRACKET

SCALE: 1 1/2" = 1'-0"

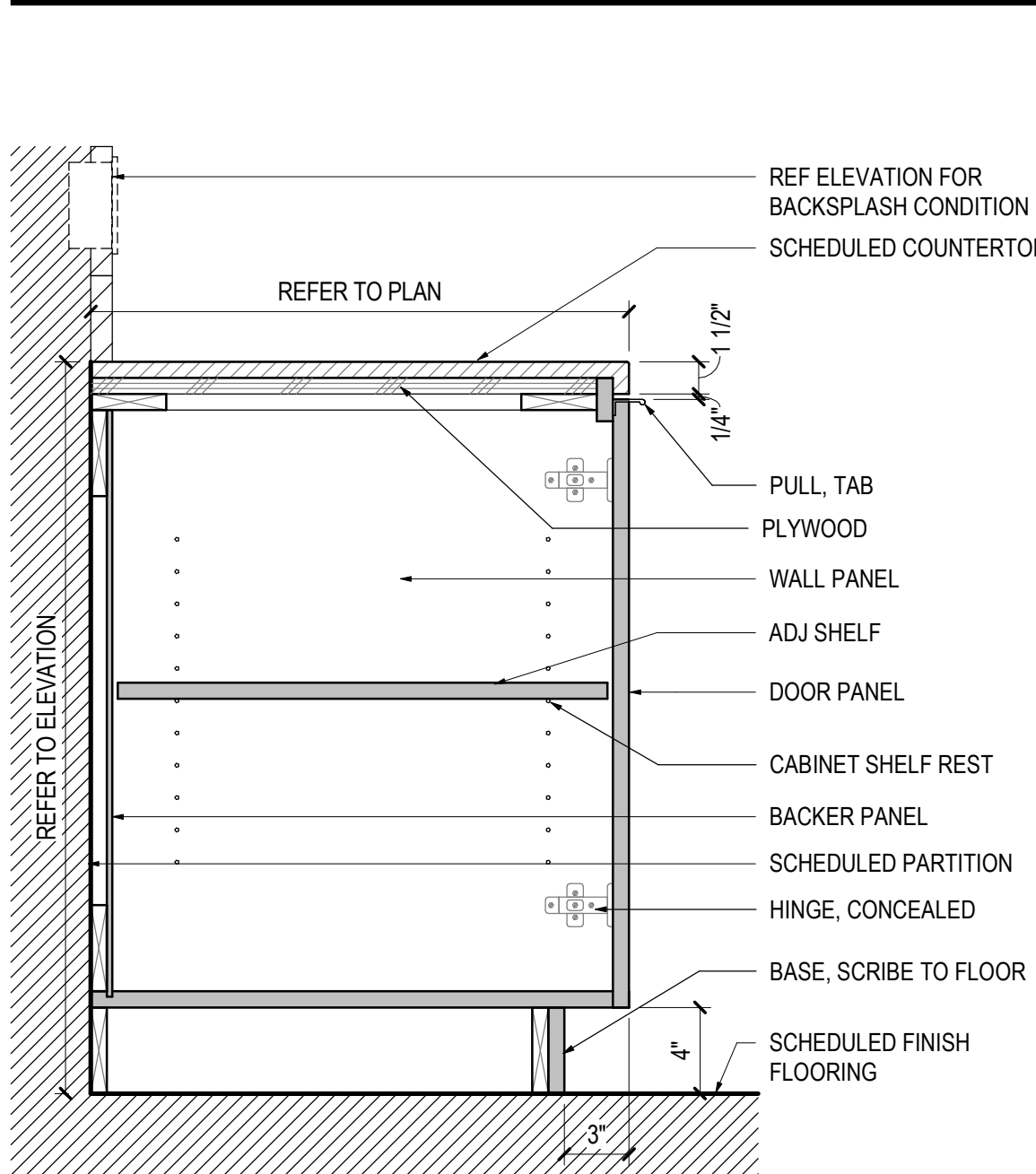
REF: 01 / A730



06 BC ISLAND - ADJ SHELF

SCALE: 1 1/2" = 1'-0"

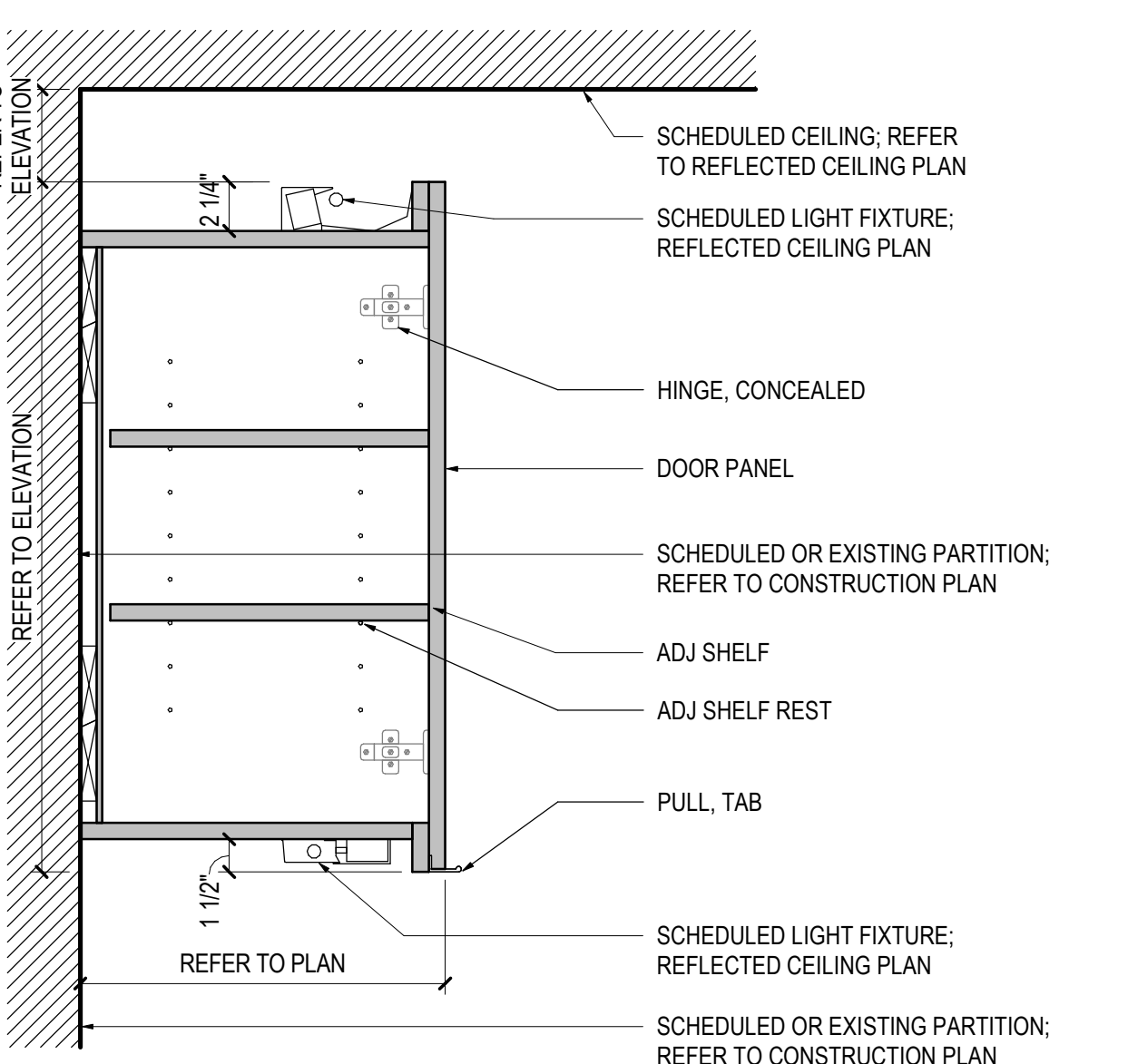
REF: 10 / A730



03 BC - ADJ SHELF W/ RACEWAY

SCALE: 1 1/2" = 1'-0"

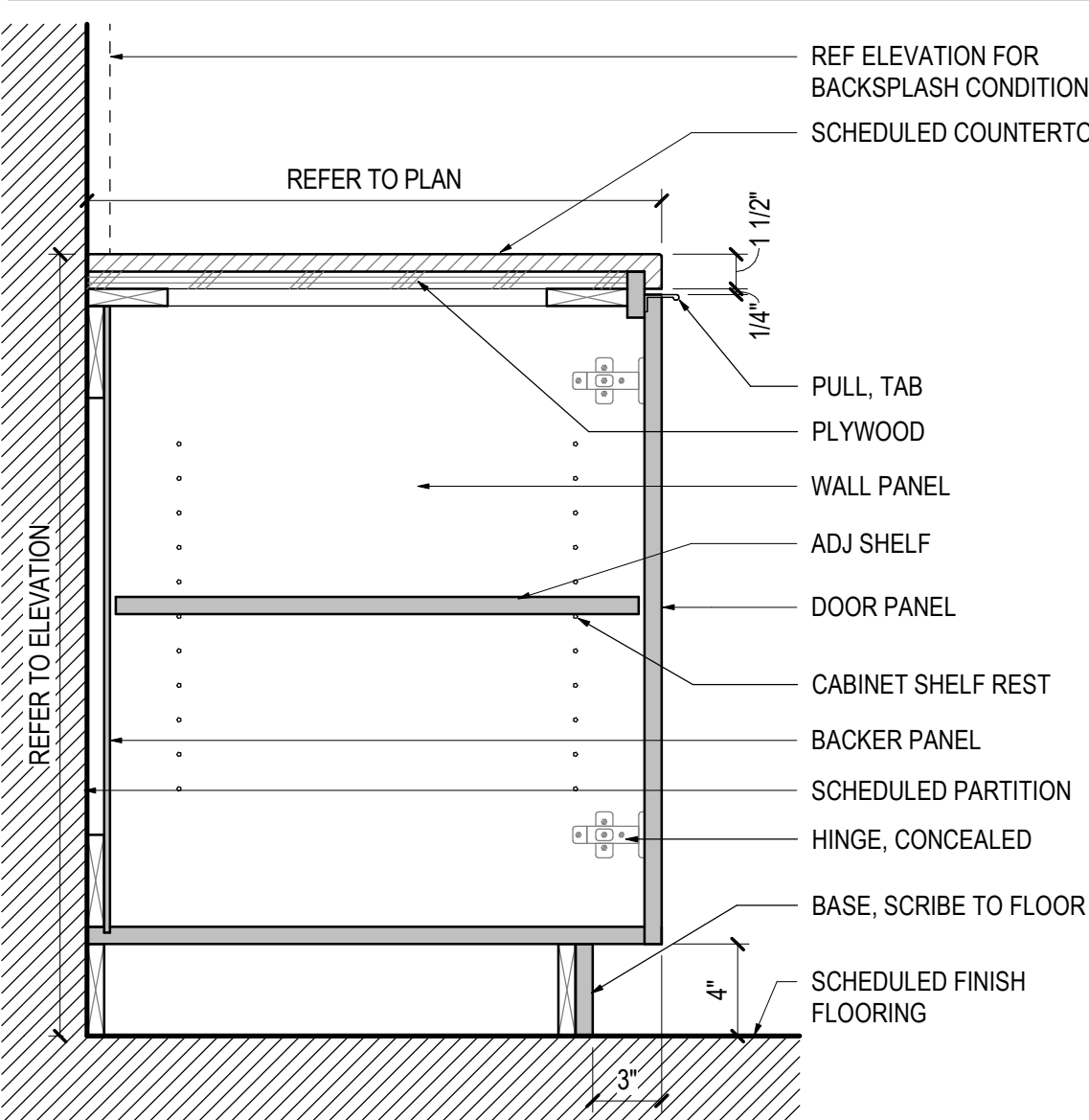
REF: 01 / A731



15 UC - UNDER & OVER LIGHTS

SCALE: 1 1/2" = 1'-0"

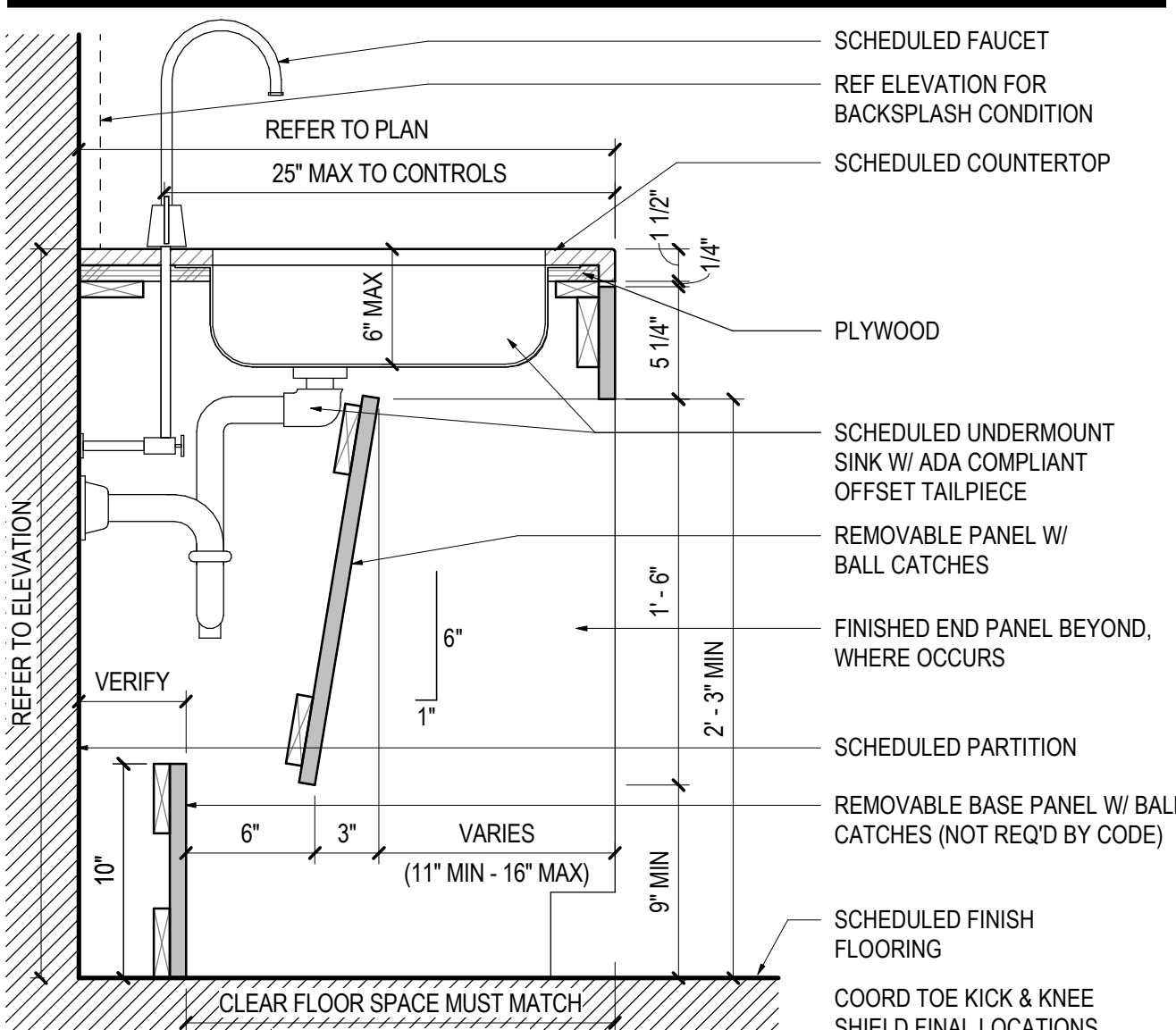
REF: 02 / A731



11 BC - ADJ SHELF

SCALE: 1 1/2" = 1'-0"

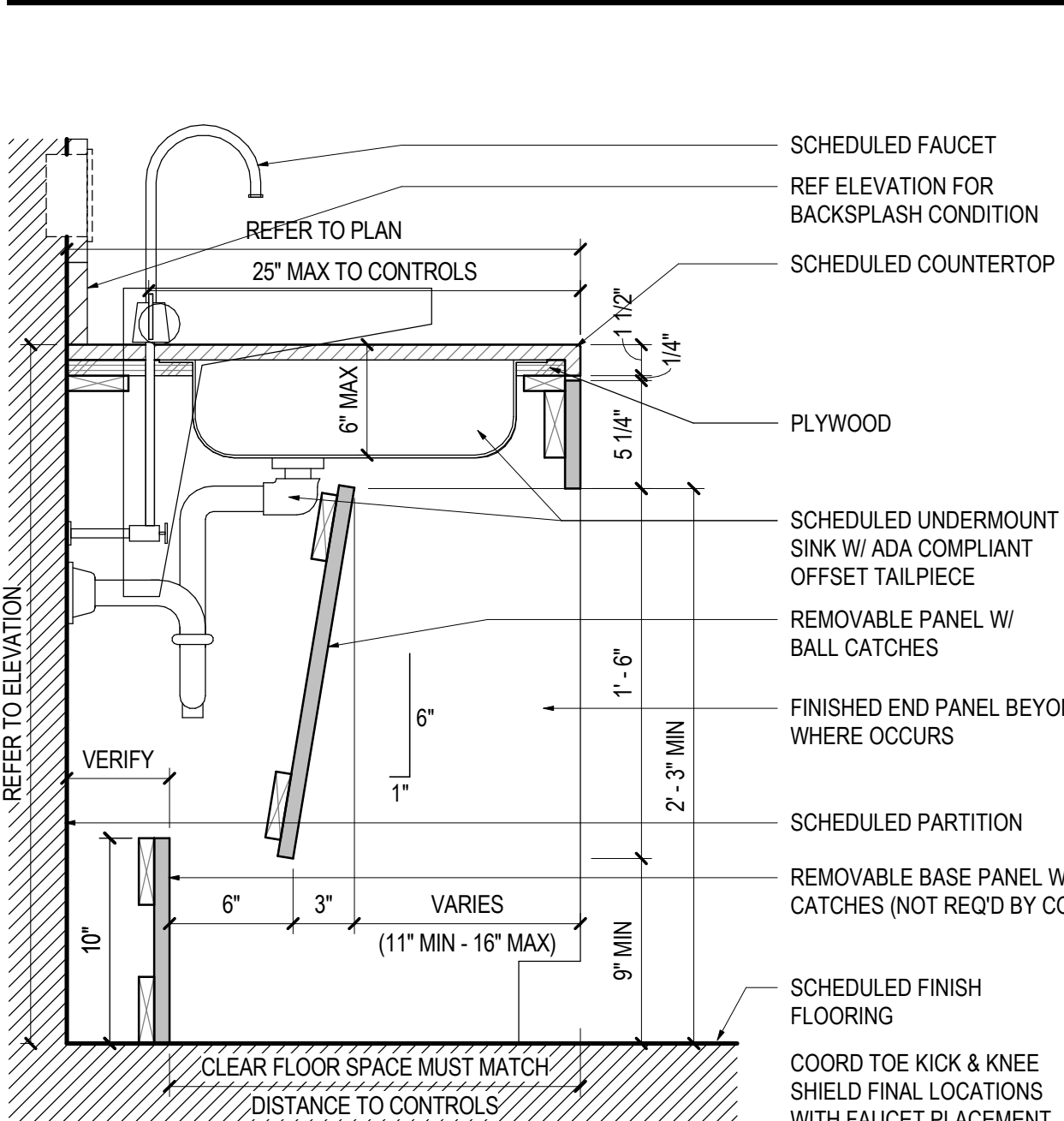
REF: 07 / A730



07 BC - ADA LAVATORY

SCALE: 1 1/2" = 1'-0"

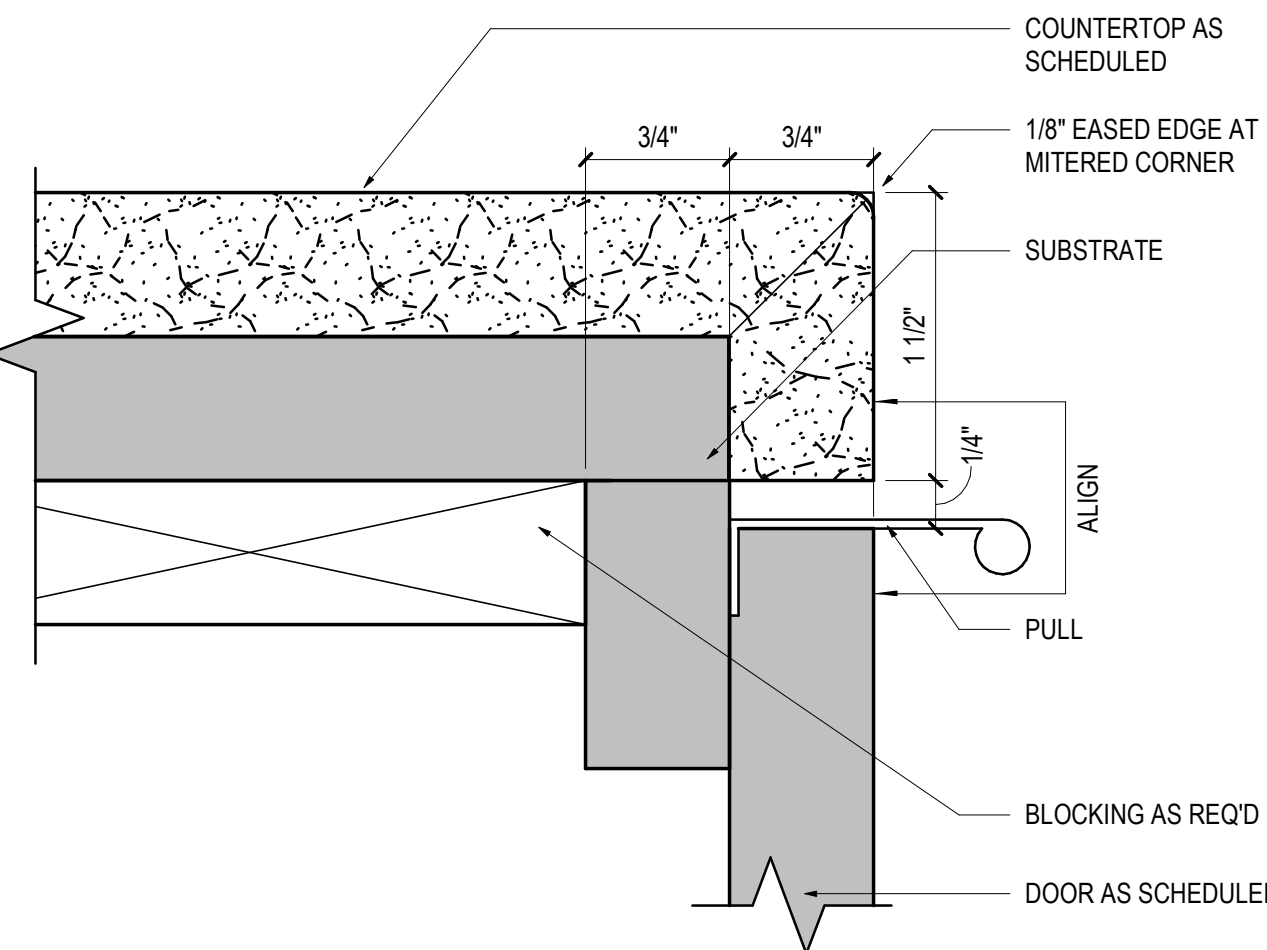
REF: 02 / A731



04 BC - ADA LAVATORY W/ RACEWAY

SCALE: 1 1/2" = 1'-0"

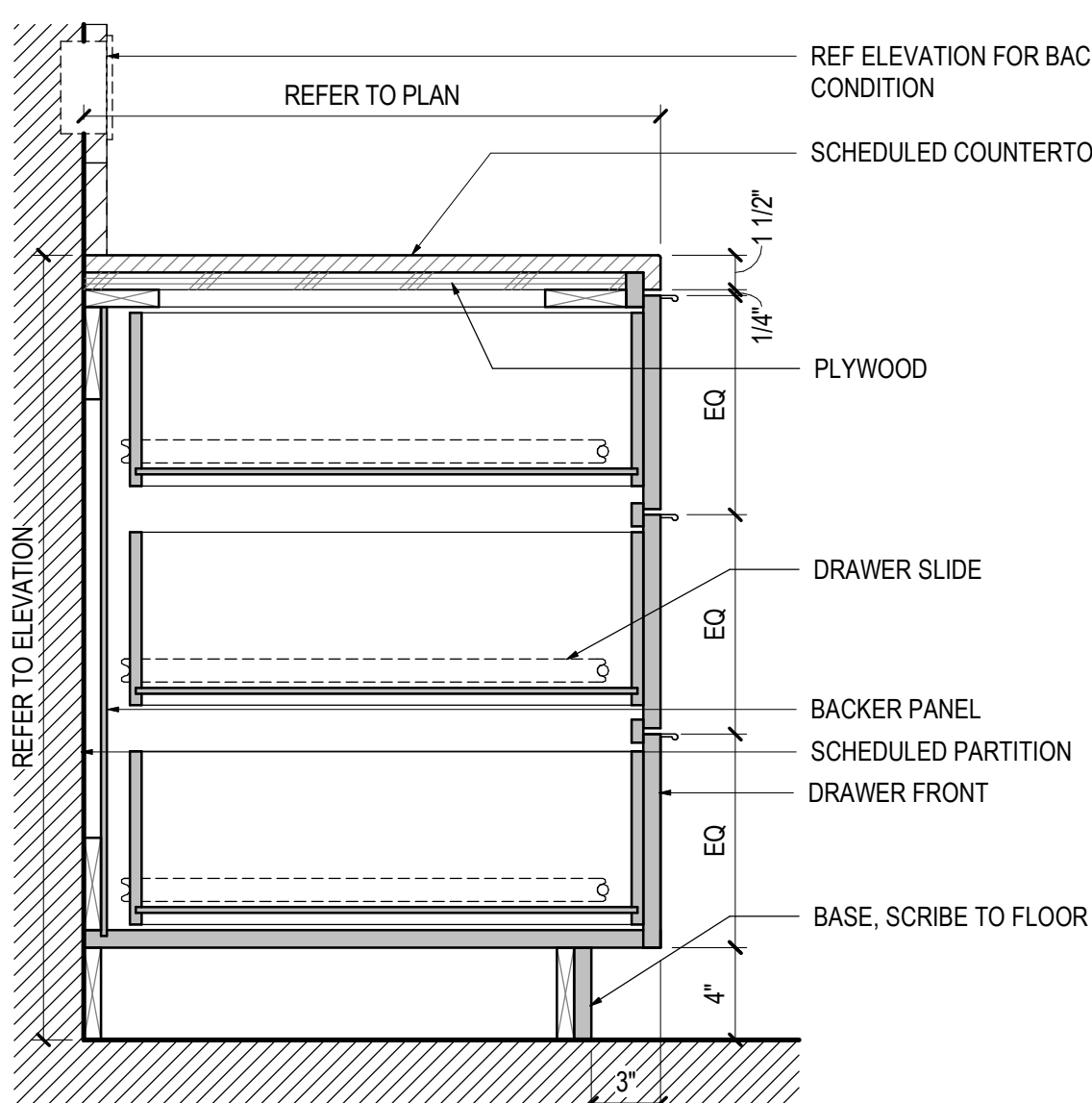
REF: 01 / A731



01 TYPICAL COUNTERTOP PROFILE

SCALE: 12" = 1'-0"

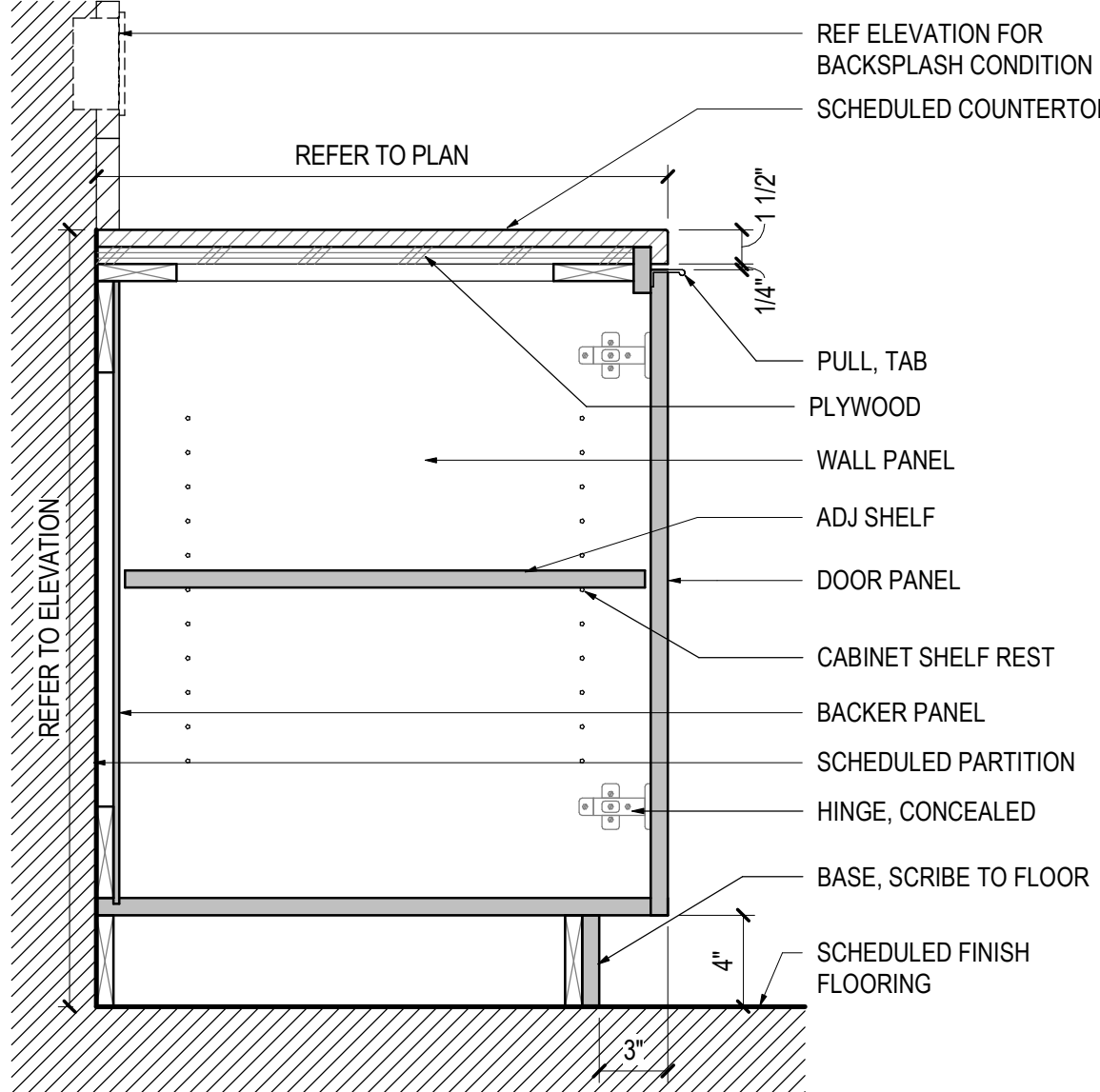
REF: /



02 BC - DRAWERS (3 EQ) W/ RACEWAY

SCALE: 1 1/2" = 1'-0"

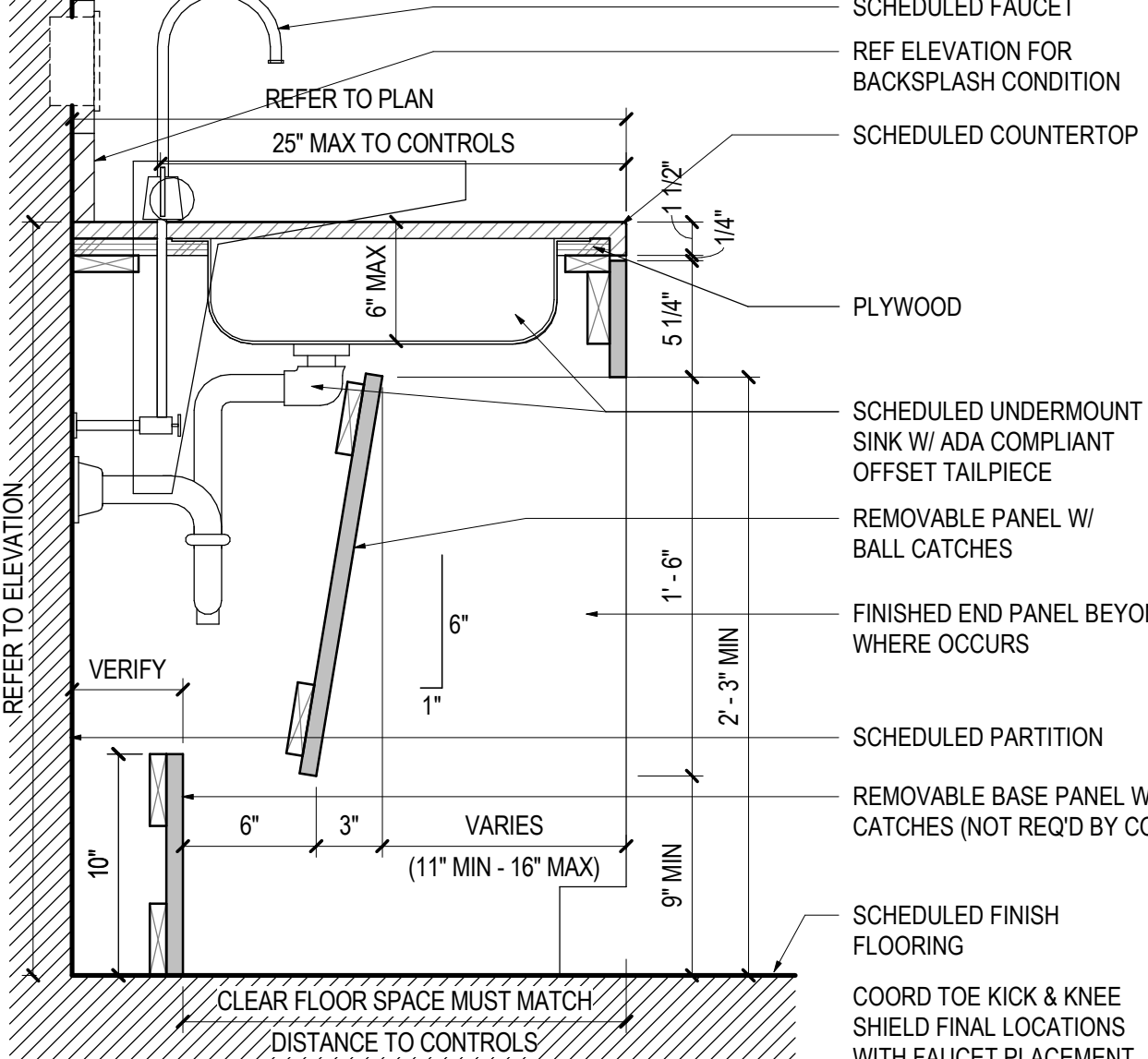
REF: 01 / A731



03 BC - ADJ SHELF W/ RACEWAY

SCALE: 1 1/2" = 1'-0"

REF: 01 / A731



04 BC - ADA LAVATORY W/ RACEWAY

SCALE: 1 1/2" = 1'-0"

REF: 01 / A731

GENERAL NOTES

KEYNOTES

ASHE I BROUSSARD I WEINZETTLE
ARCHITECTS

TIPTON
ASSOCIATES

CONSULTANTS
Microaux/Suiter & Associates, Civil
CABDO Landscape Architecture, LLC
Fox-Nash Engineering, LLC
Structural
S&S Mechanical, Inc.
Mechanical, Plumbing, Acoustic
Associated Design Group, Inc.
Civil
Specialty Architecture

OWNER REVIEW
LOUISIANA STATE UNIVERSITY
ALEXANDRIA
DOWNTOWN HEALTH SERVICES CENTER

800 JACKSON ST.
ALEXANDRIA, LA 71301

PROJECT # 0023360.000 WBS: F:19002480
ARCH PROJECT # 2023.20 / 1031.00-23
SITE ID: NEW SITE CODE: 4-40-023
DATE OCTOBER 10, 2025
Ashe Broussard Weinzeitzle Architects, LLP
Tipton Associates APAC, A Joint Venture
301 Jackson Street, Suite 205
Alexandria, LA 71301
NO. REVISION DATE

JAMES D. WEINZETTLE
No. 3854
REGISTERED ARCHITECT
2025.09.05

STATE OF LOUISIANA
REGISTERED ARCHITECT
2025.09.05

KEYPLAN

MILLWORK
SECTIONS

A736