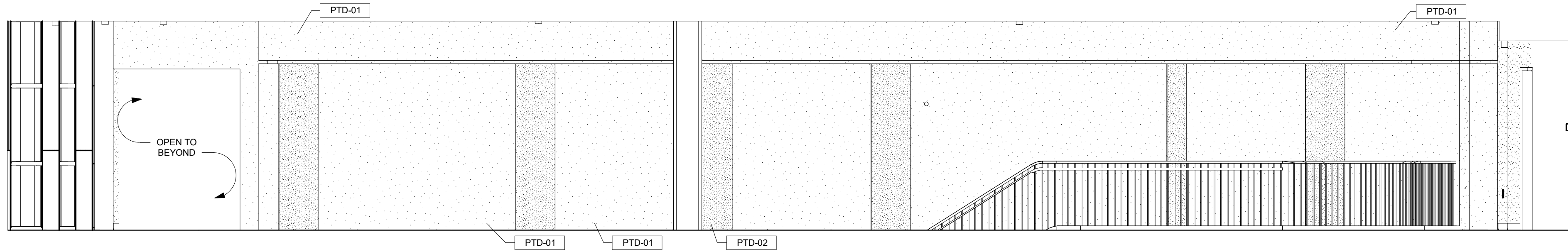
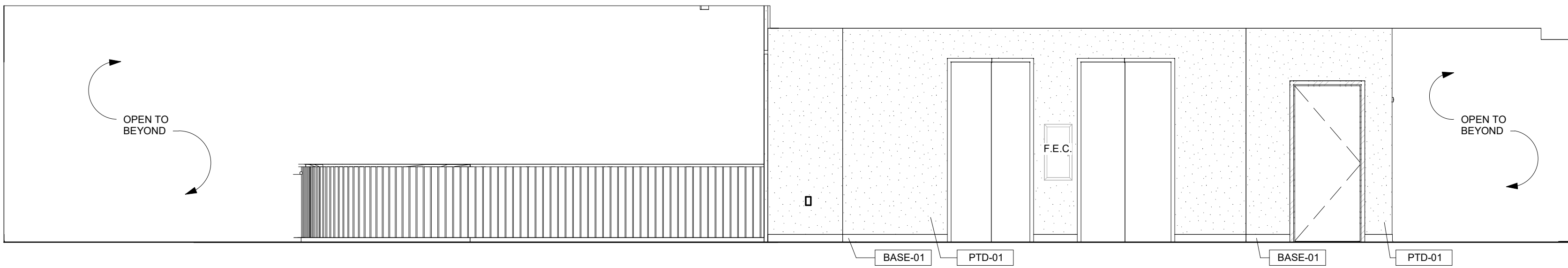


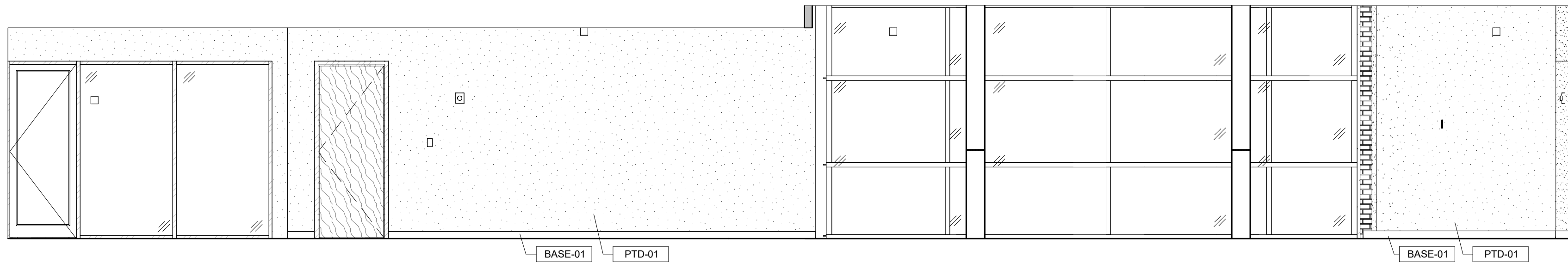
6 C307 CORRIDOR WEST
1/4" = 1'-0" | RE:11A103



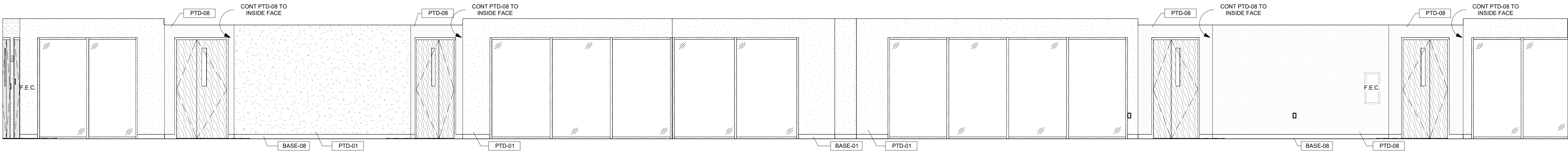
5 C307 CORRIDOR EAST
1/4" = 1'-0" | RE:11A103



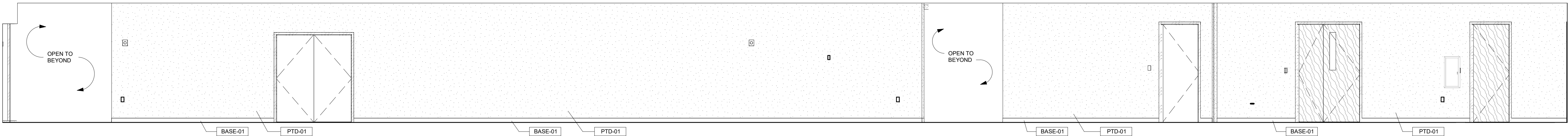
3 C304, C305 CORRIDORS NORTH
1/4" = 1'-0" | RE:11A103



4 C304, C305 CORRIDORS SOUTH
1/4" = 1'-0" | RE:11A103



2 C302, C303 CORRIDORS EAST
1/4" = 1'-0" | RE:11A103



1 C302, C303 CORRIDOR WEST
1/4" = 1'-0" | RE:11A103