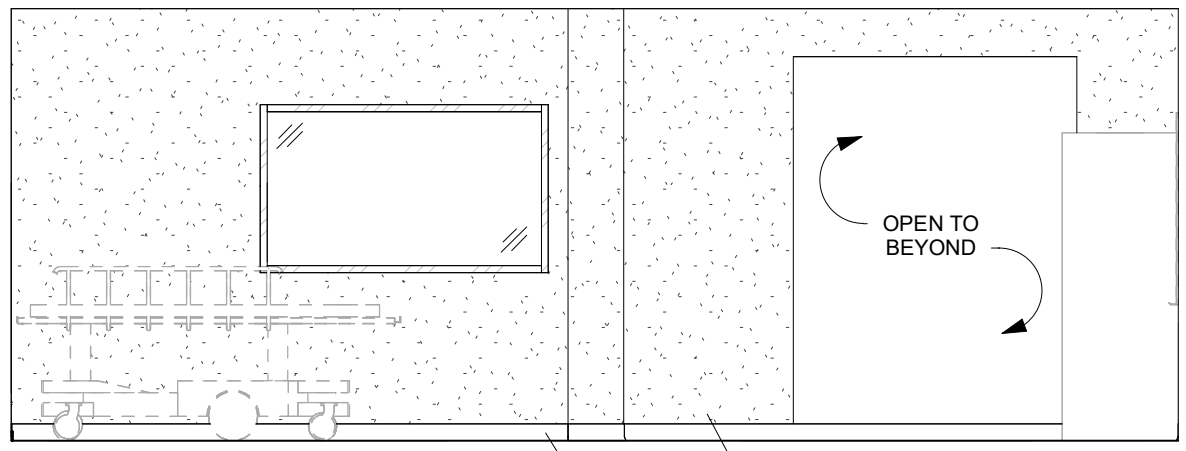
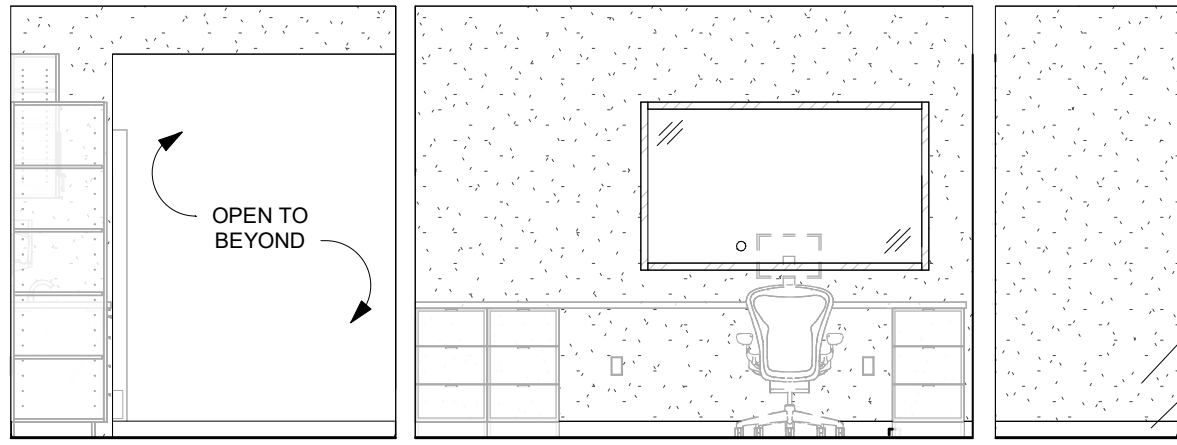


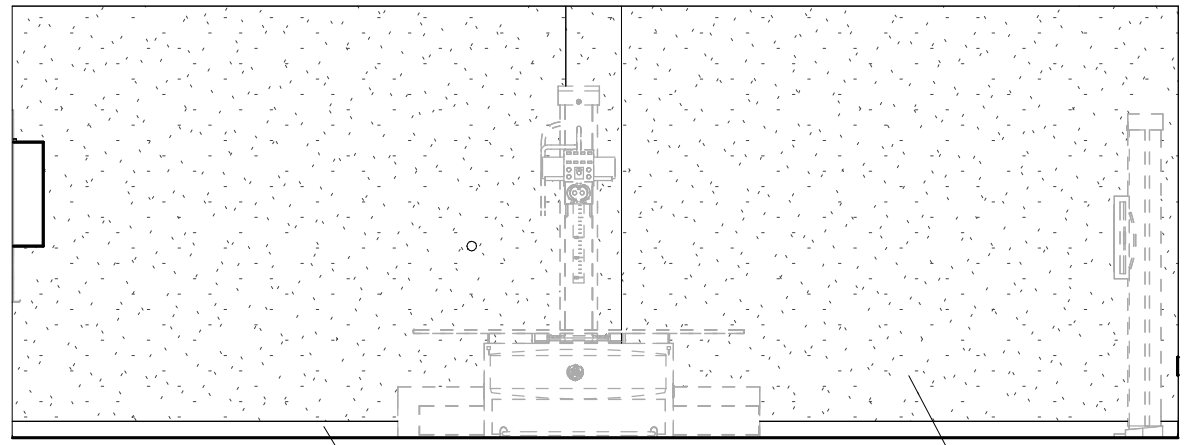
15 210 RADIOLOGIC TECH LAB WEST
1/4" = 1'-0" | RE:1/A102



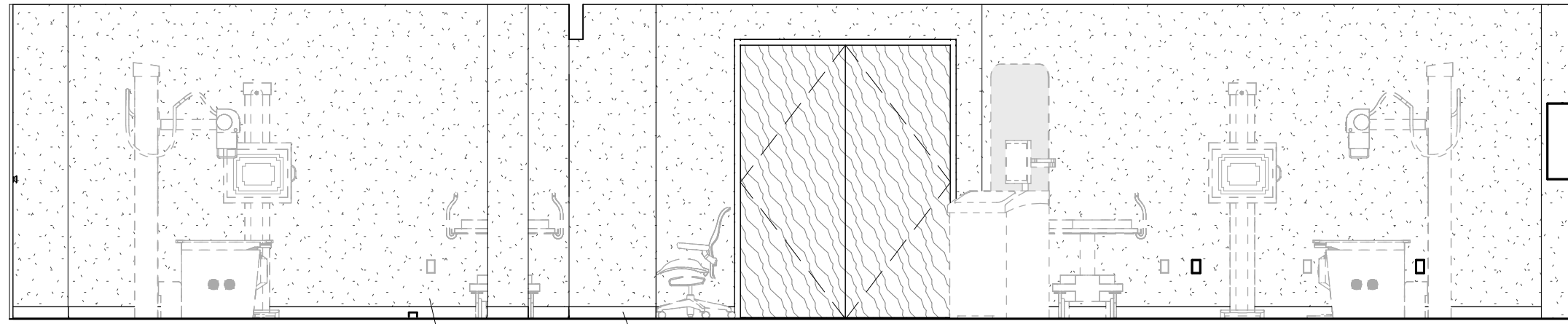
16 210 RADIOLOGIC TECH LAB WEST 2
1/4" = 1'-0" | RE:1/A102



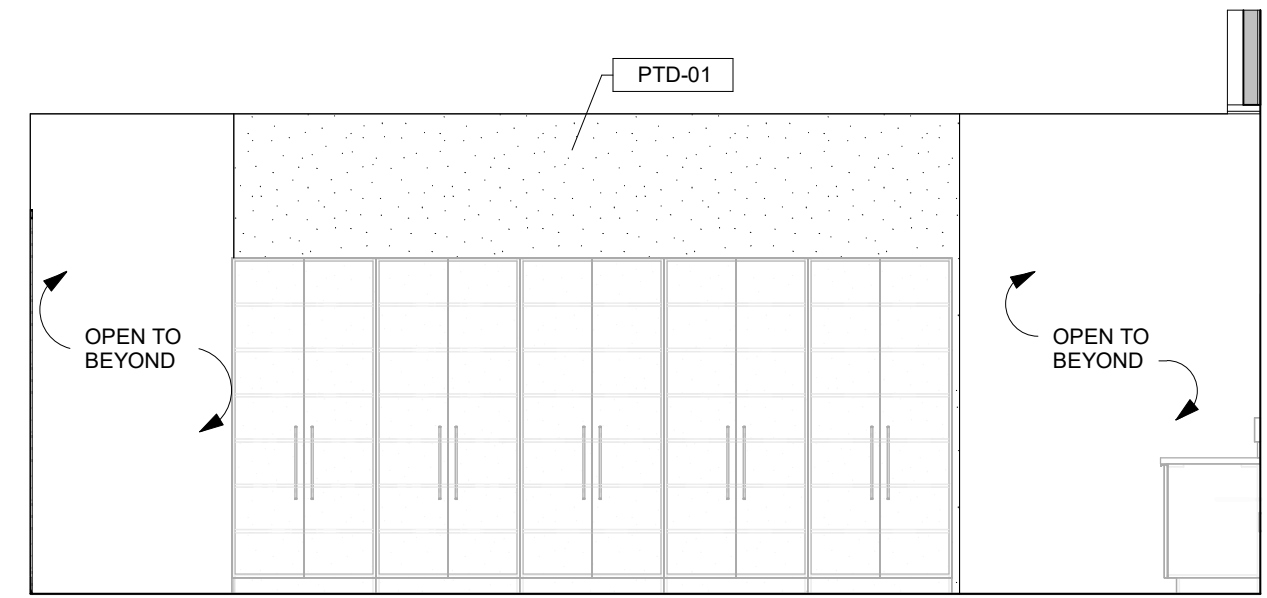
12 210 RADIOLOGIC TECH LAB EAST
1/4" = 1'-0" | RE:1/A102



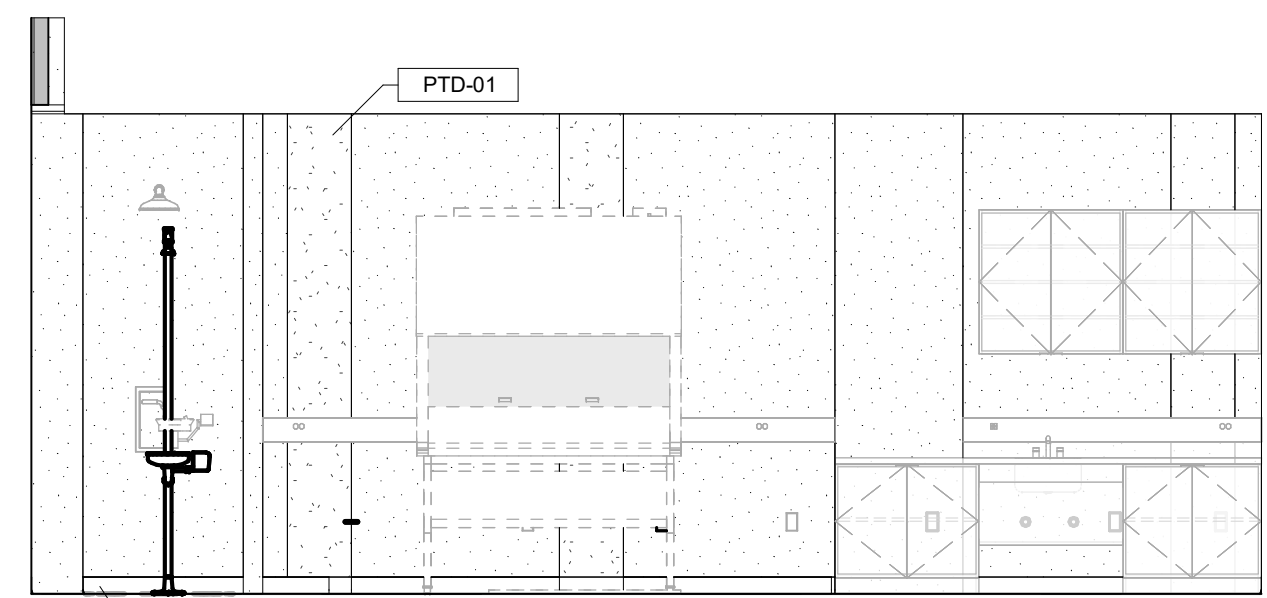
13 210 RADIOLOGIC TECH LAB EAST 2
1/4" = 1'-0" | RE:1/A102



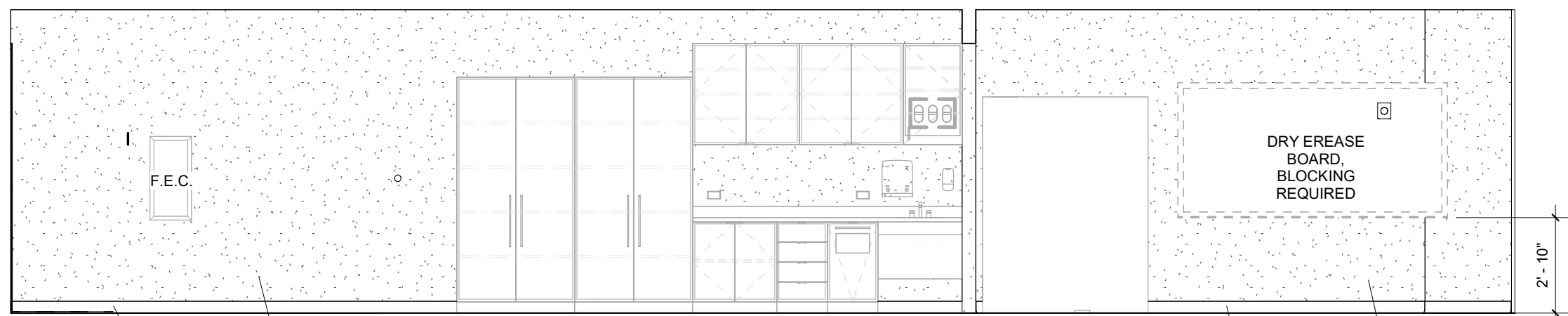
14 210 RADIOLOGIC TECH LAB SOUTH
1/4" = 1'-0" | RE:1/A102



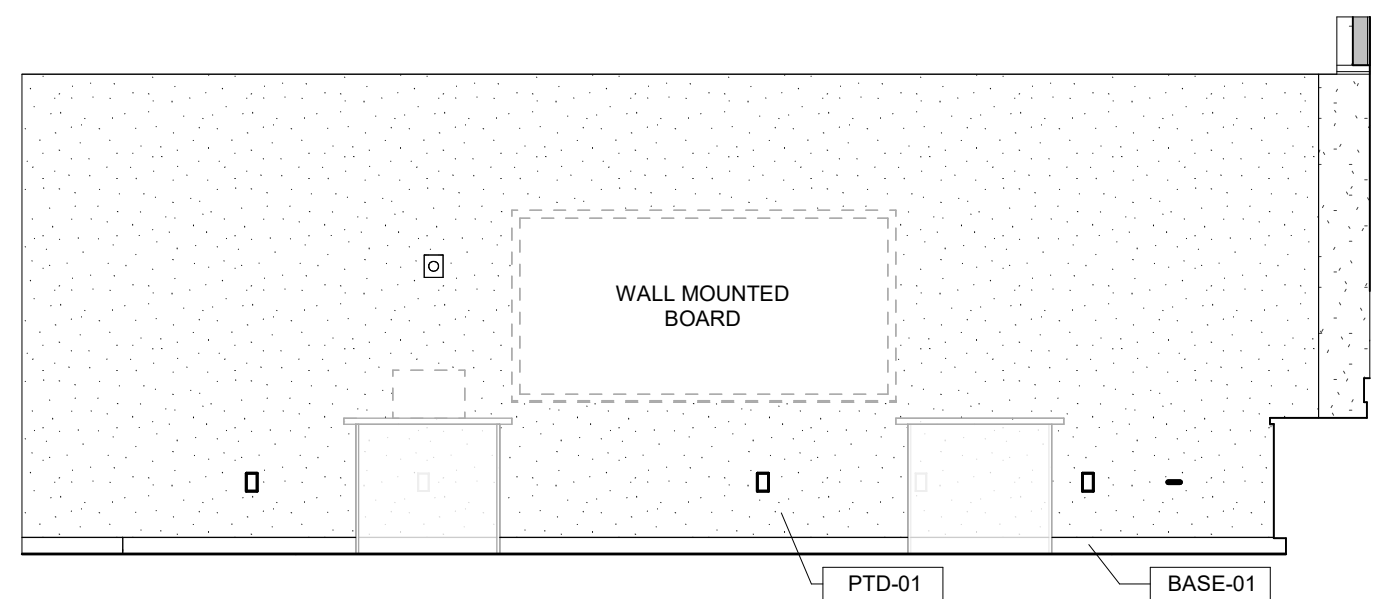
9 213 MEDICAL LAB EAST 2
1/4" = 1'-0" | RE:1/A102



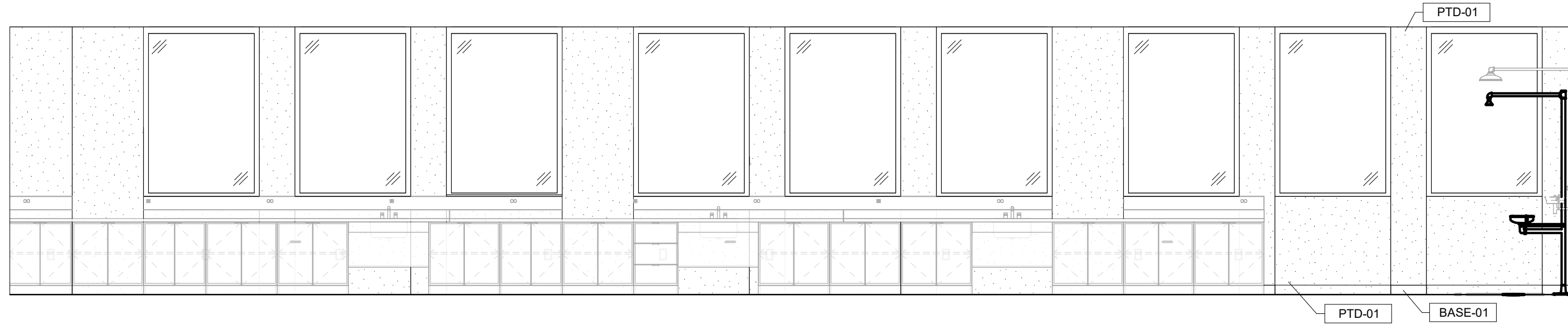
10 213 MEDICAL LAB WEST 2
1/4" = 1'-0" | RE:1/A102



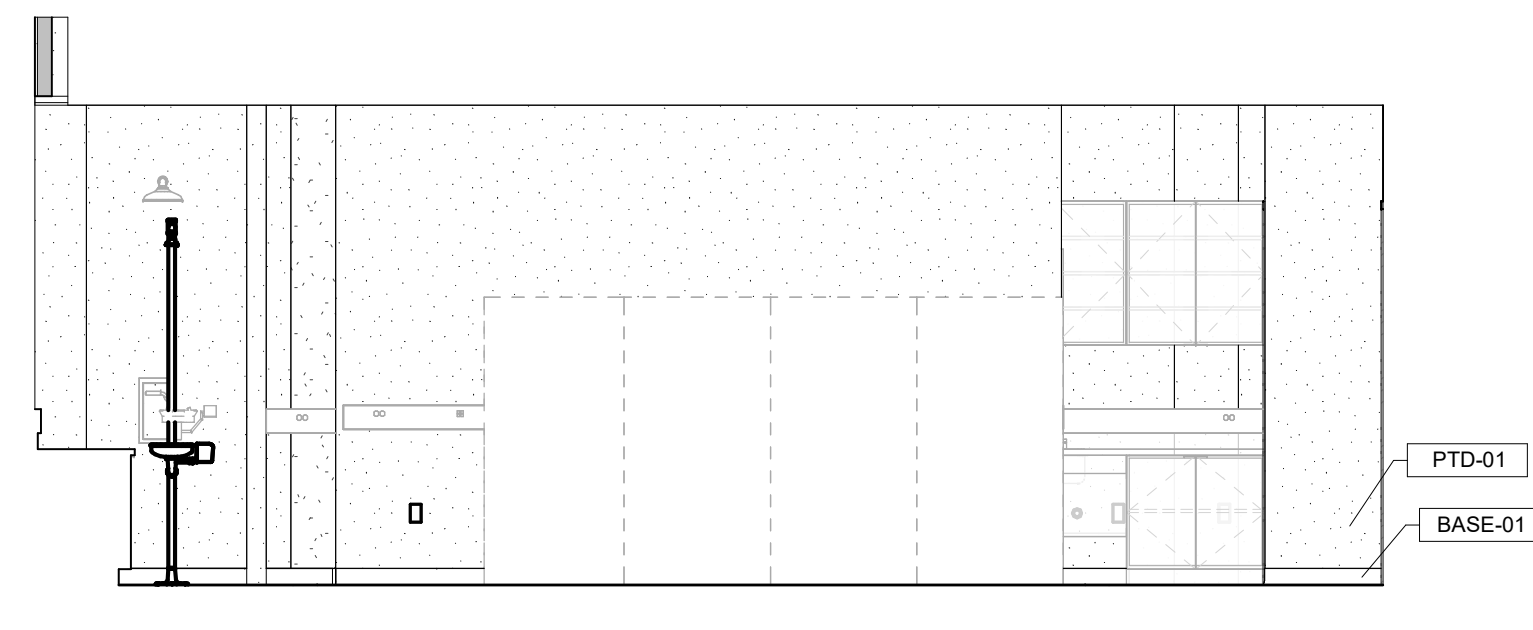
11 210 RADIOLOGIC TECH LAB NORTH
1/4" = 1'-0" | RE:1/A102



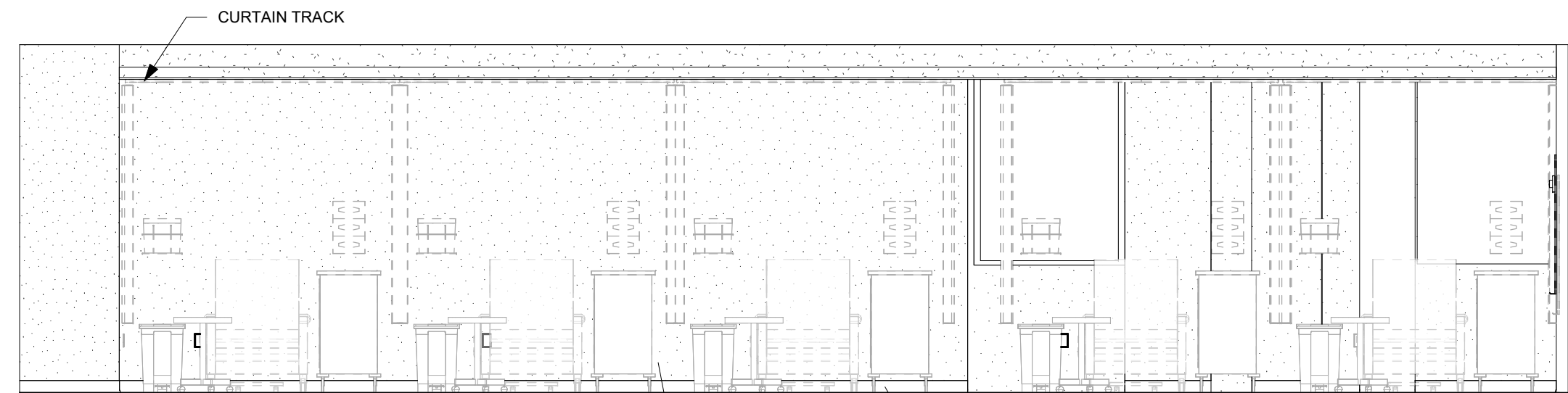
6 213 MEDICAL LAB EAST
1/4" = 1'-0" | RE:1/A102



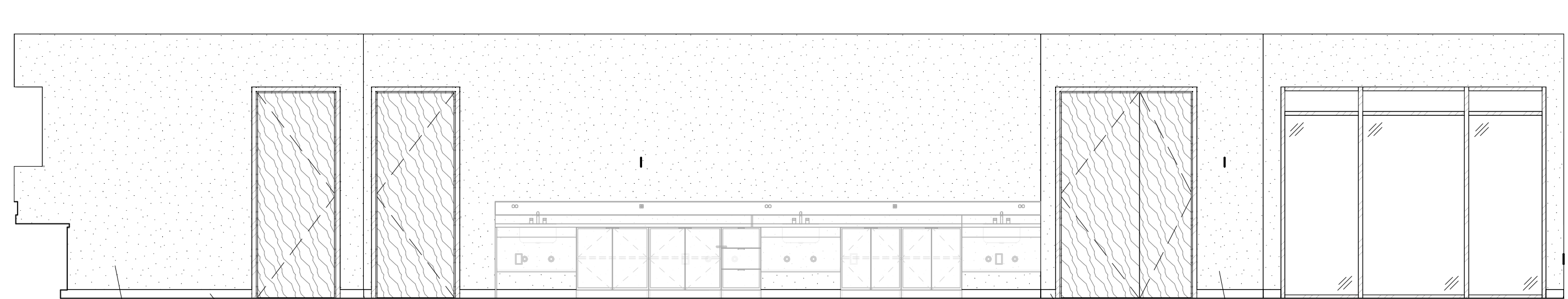
7 213 MEDICAL LAB SOUTH
1/4" = 1'-0" | RE:1/A102



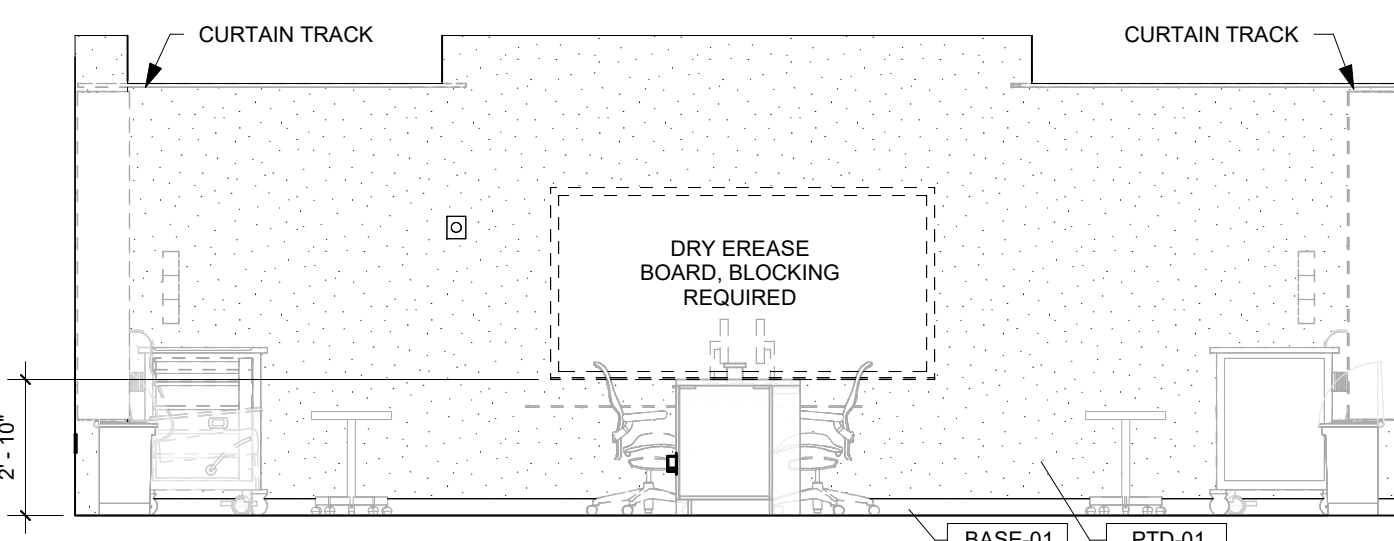
8 213 MEDICAL LAB WEST
1/4" = 1'-0" | RE:1/A102



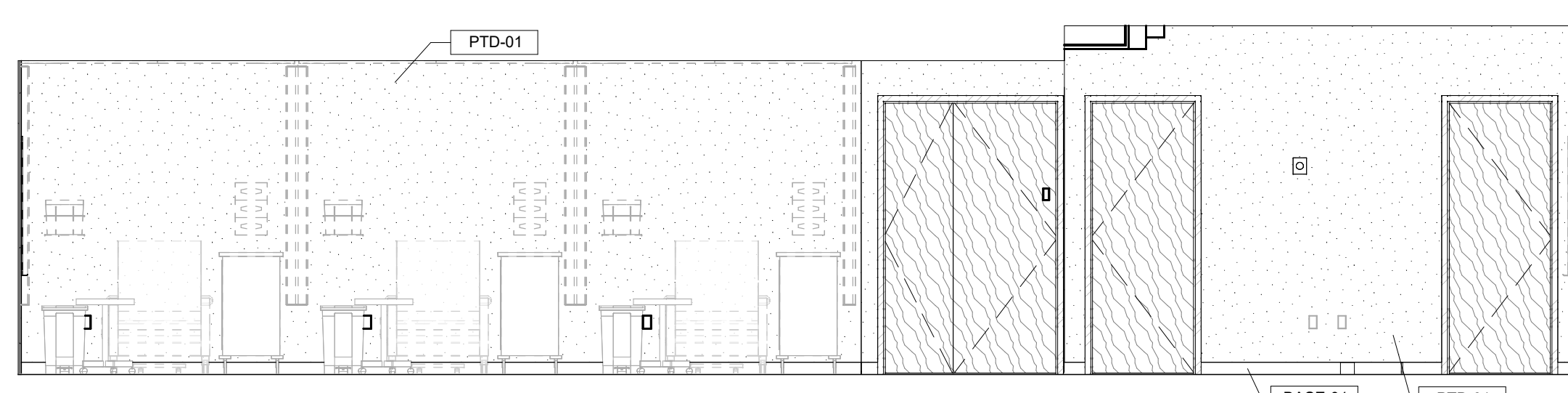
4 211 PHLEBOTOMY LAB WEST
1/4" = 1'-0" | RE:1/A102



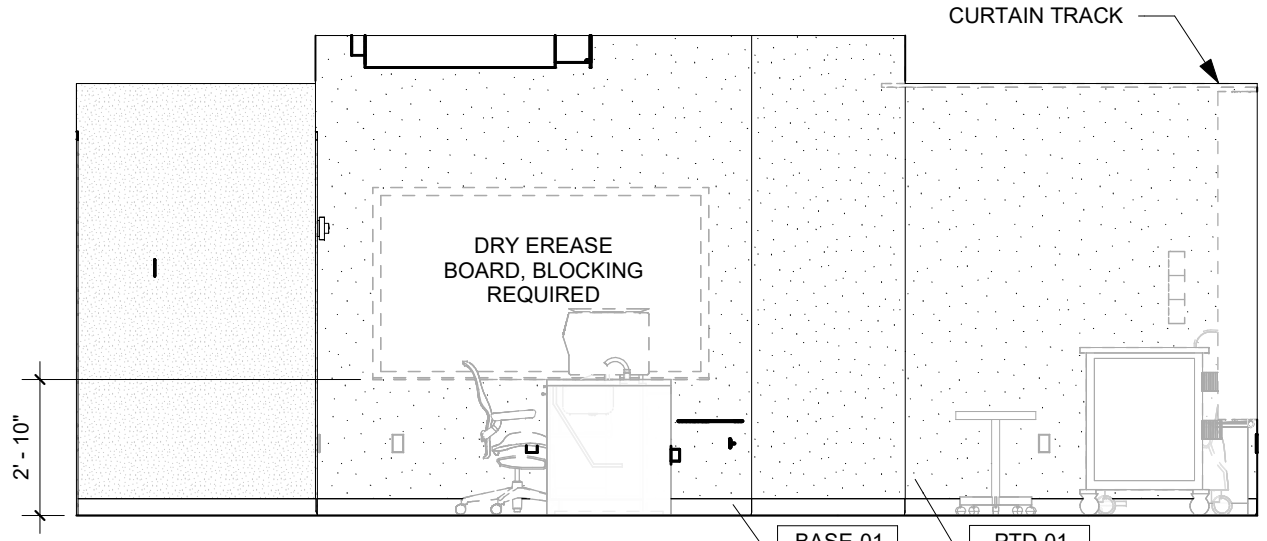
5 213 MEDICAL LAB NORTH
1/4" = 1'-0" | RE:1/A102



1 211 PHLEBOTOMY LAB NORTH
1/4" = 1'-0" | RE:1/A102



2 211 PHLEBOTOMY LAB EAST
1/4" = 1'-0" | RE:1/A102



3 211 PHLEBOTOMY LAB SOUTH
1/4" = 1'-0" | RE:1/A102