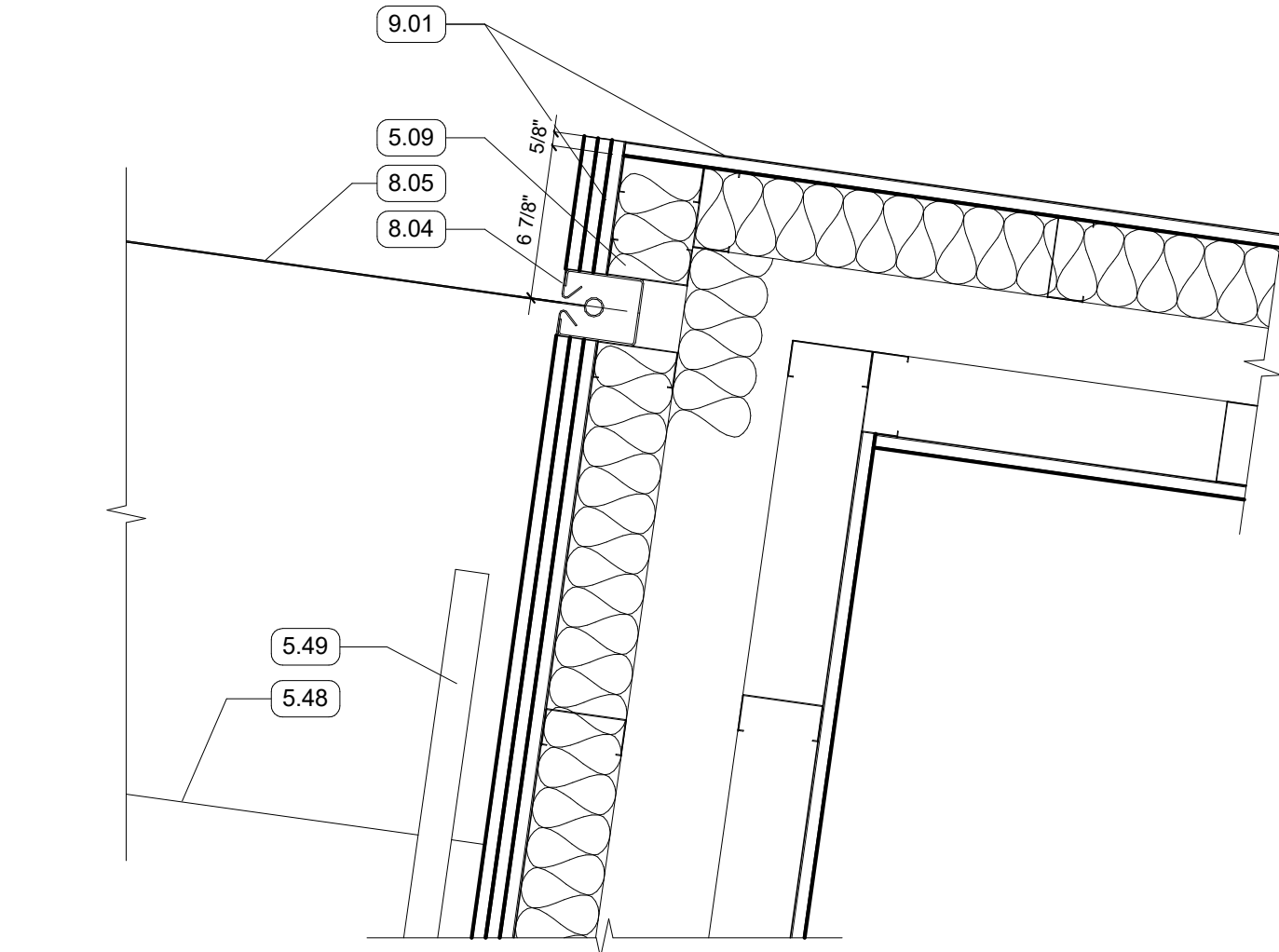
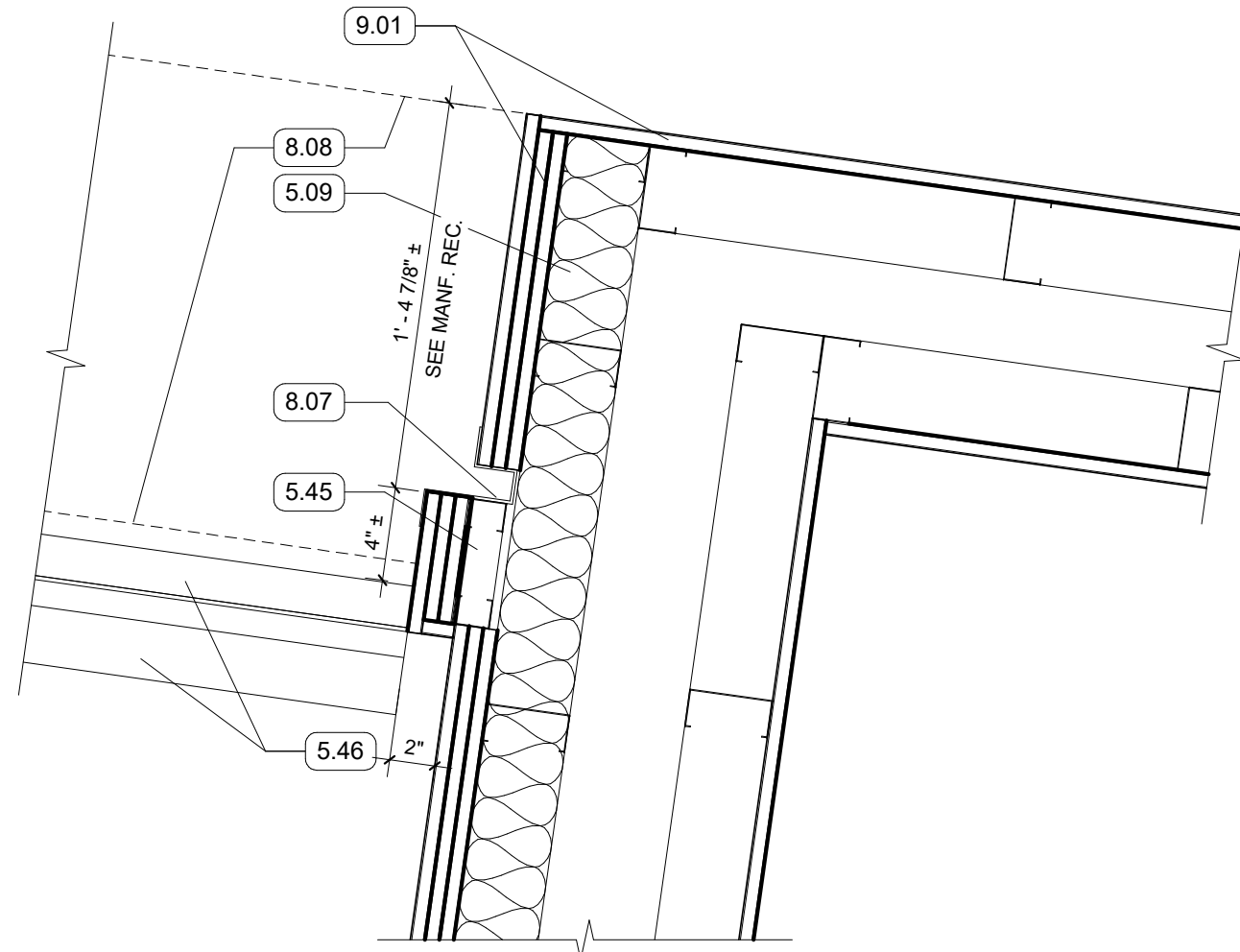


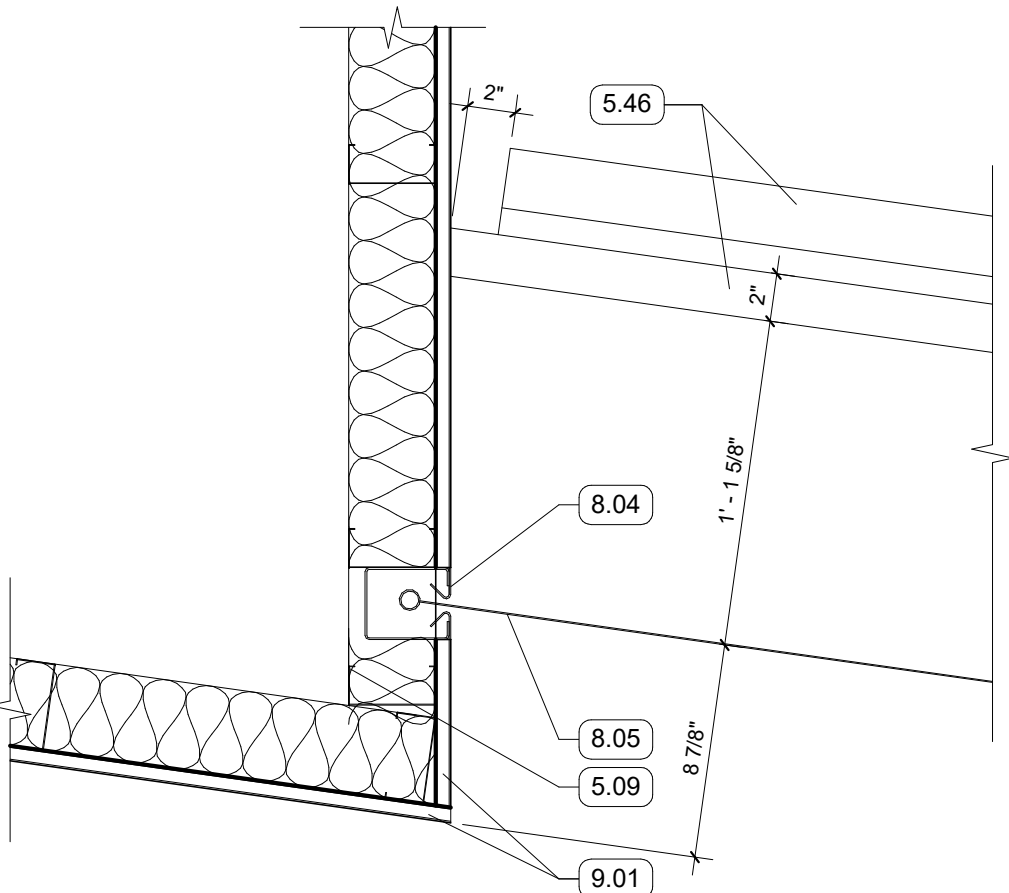
1 DETAIL- COILING OVERHEAD SMOKE CURTAIN JAMB
1 1/2" = 1'-0" RE:1/A102



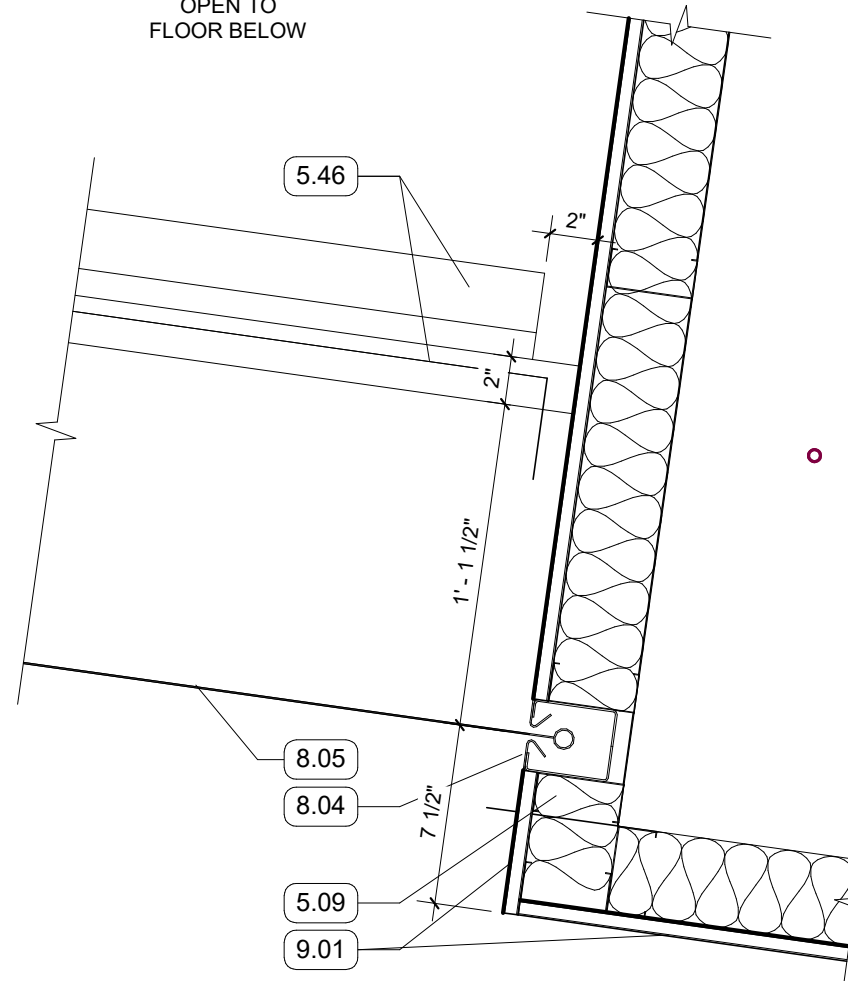
2 DETAIL- COILING OVERHEAD SMOKE CURTAIN JAMB
1 1/2" = 1'-0" RE:1/A102



3 DETAIL- PLEATED SMOKE CURTAIN JAMB- TYP.
1 1/2" = 1'-0" RE:1/A103



4 DETAIL- SOUTH COILING OVERHEAD SMOKE CURTAIN JAMB WEST
1 1/2" = 1'-0" RE:1/A102



5 DETAIL- SOUTH COILING OVERHEAD SMOKE CURTAIN JAMB- EAST
1 1/2" = 1'-0" RE:1/A102

GENERAL NOTES

- KEYNOTES
- 5.09 3/8" METAL STUD FRAMING
 - 5.45 FURR OUT WALL AS REQD. PER MANUFACTUER RECOMMENDATIONS
 - 5.46 TUBE STEEL AT EDGE OF FLOOR BELOW & GUARDRAIL
 - 5.48 EDGE OF STAIR TREAD BELOW
 - 5.49 WALL-MOUNTED HANDRAIL
 - 8.04 OVERHEAD COILING SMOKE CURTAIN, SIDE GUIDE
 - 8.05 OVERHEAD COILING SMOKE CURTAIN, SIDE GUIDE
 - 8.07 PLEATED SMOKE CURTAIN SIDE GUIDE
 - 8.08 EDGE OF SMOKE CURTAIN COVER; ALIGN EDGE WITH ADJACENT WALL
 - 9.01 5/8" GYPSUM BOARD; SEE FINISH PLAN FOR FINISH MATERIAL

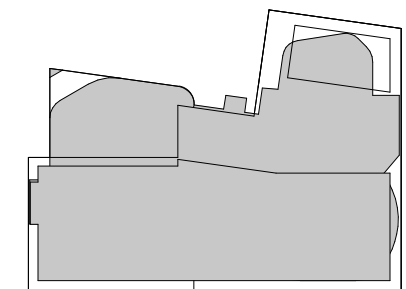
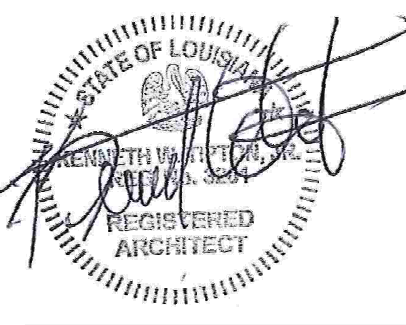
ASHE I BROUSSARD I WEINZETTLE ARCHITECTS

CONSULTANTS
Monsieur & Associates, LLC
CABDO Landscape Architecture, LLC
Fox Neust Engineering, LLC
S&S O'Brien
Mechanical Engineering
Associated Design Group, Inc.
Electrical Engineering
Specialty Architecture

ISSUE FOR BID
LOUISIANA STATE UNIVERSITY
ALEXANDRIA
DOWNTOWN HEALTH SERVICES CENTER
800 JACKSON ST.
ALEXANDRIA, LA 71301

PROJECT # 19-602-23-01
ARCH PROJECT # 2023.20 / 1031.00-23
SITE ID: NEW SITE CODE: 6-40-023
DATE OCTOBER 10, 2023
Ashe Broussard Weinzettte Architects, LLP
Tipton Associates APAC, A Joint Venture
301 Jackson Street, Suite 205
Alexandria, LA 71301

NO.	REVISION	DATE



INTERIOR PLAN
DETAILS

A530