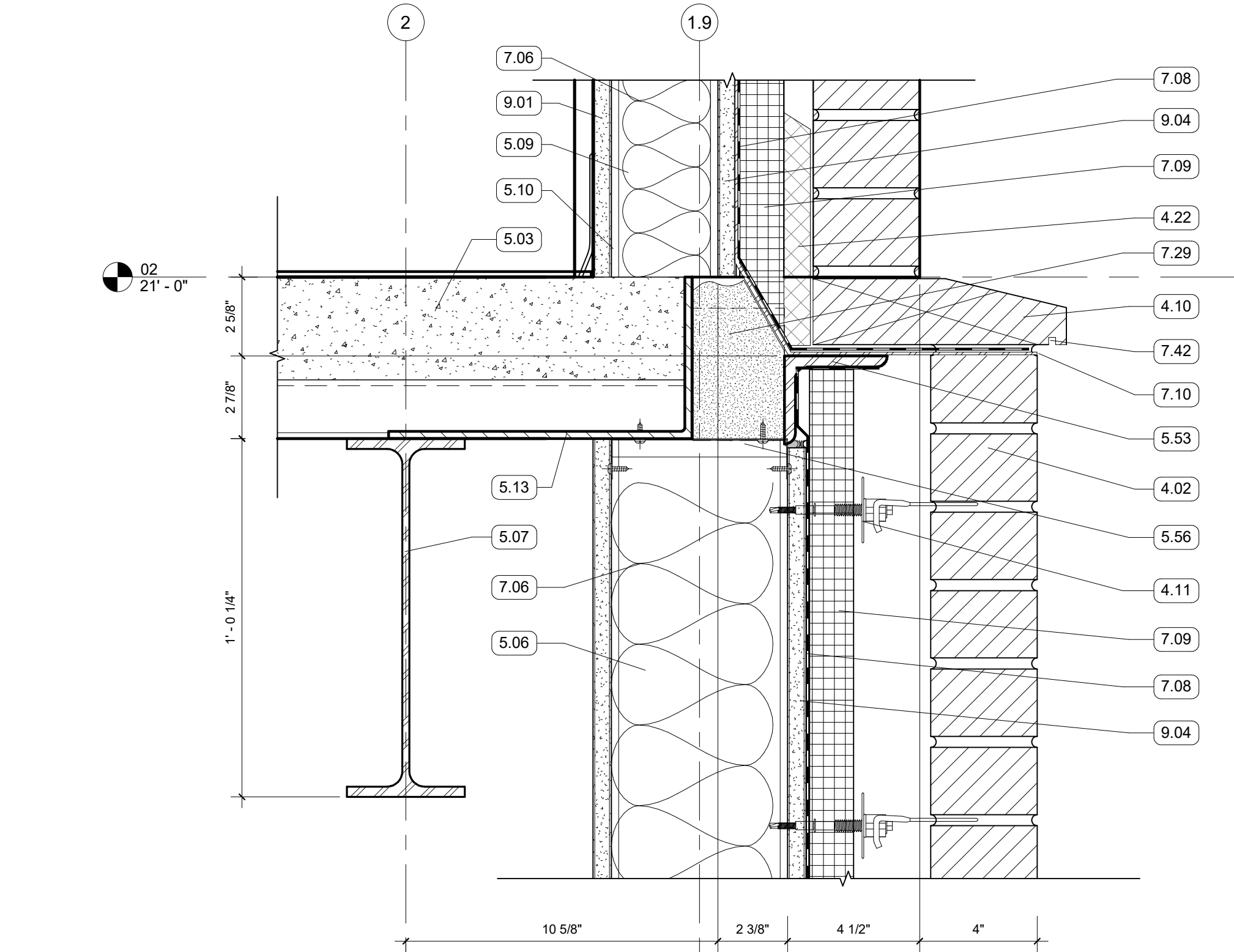
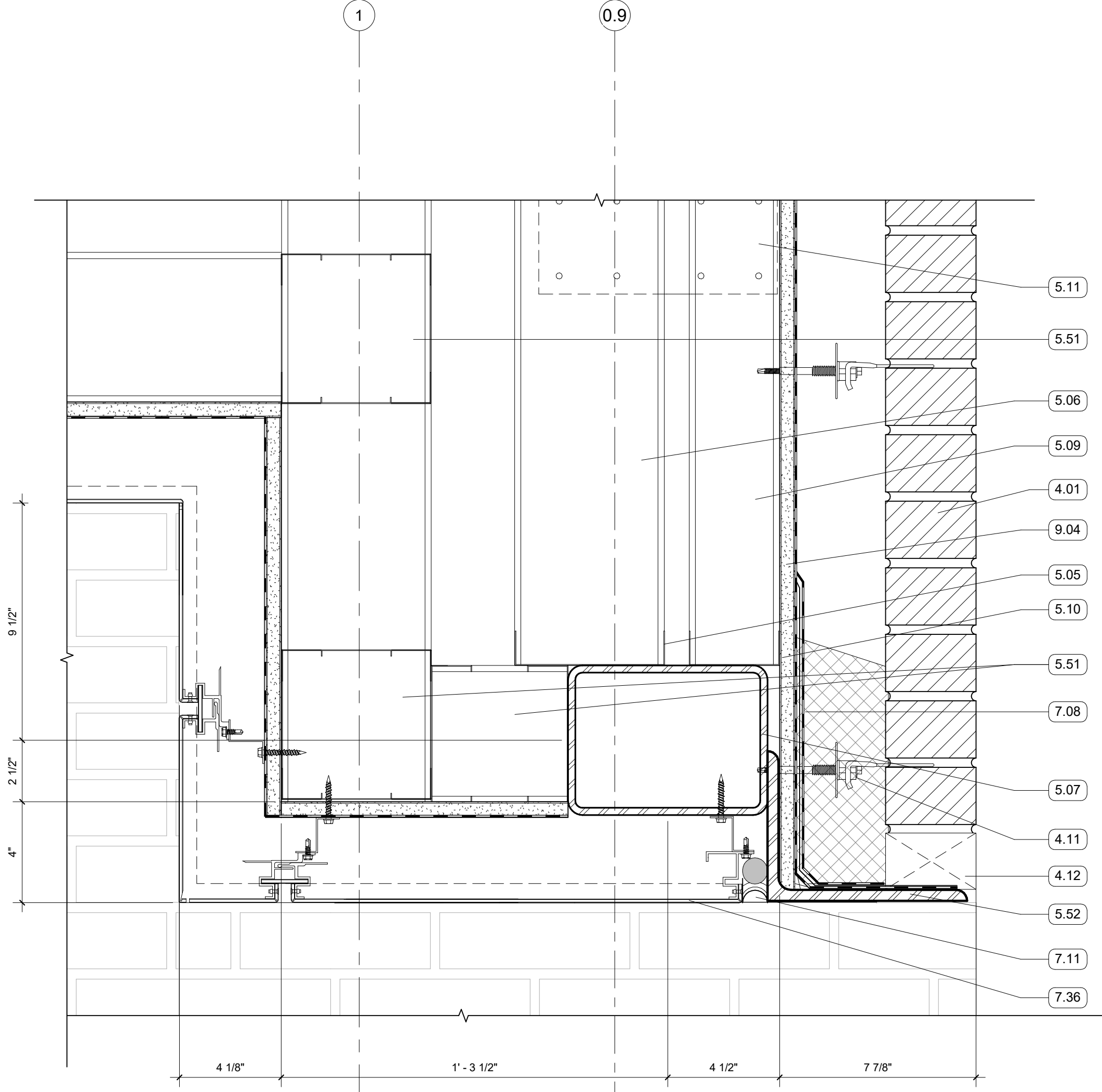


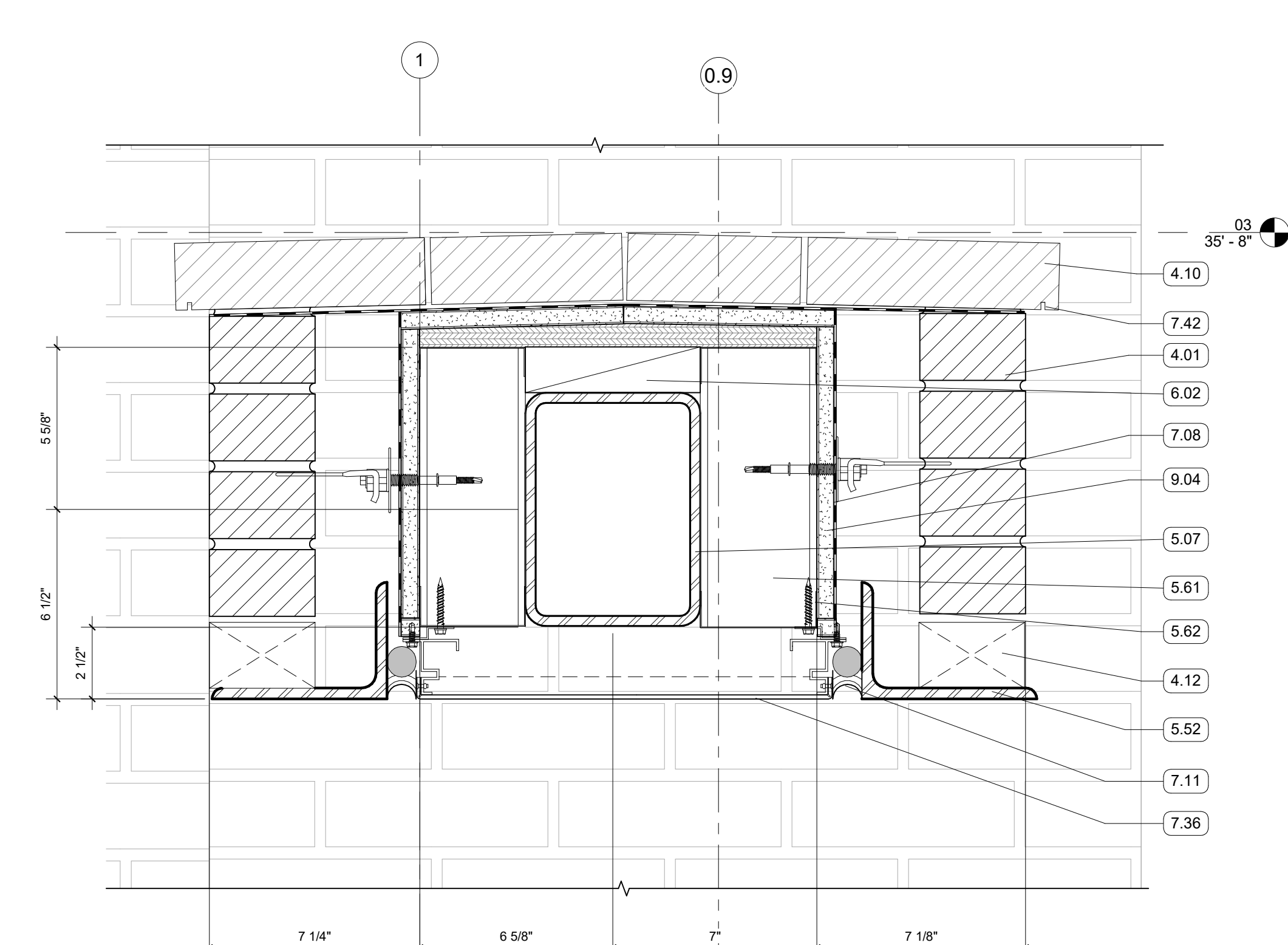
2 SECTION DETAIL - DOUBLE MASONRY  
3" = 1'-0" | RE:2/A356



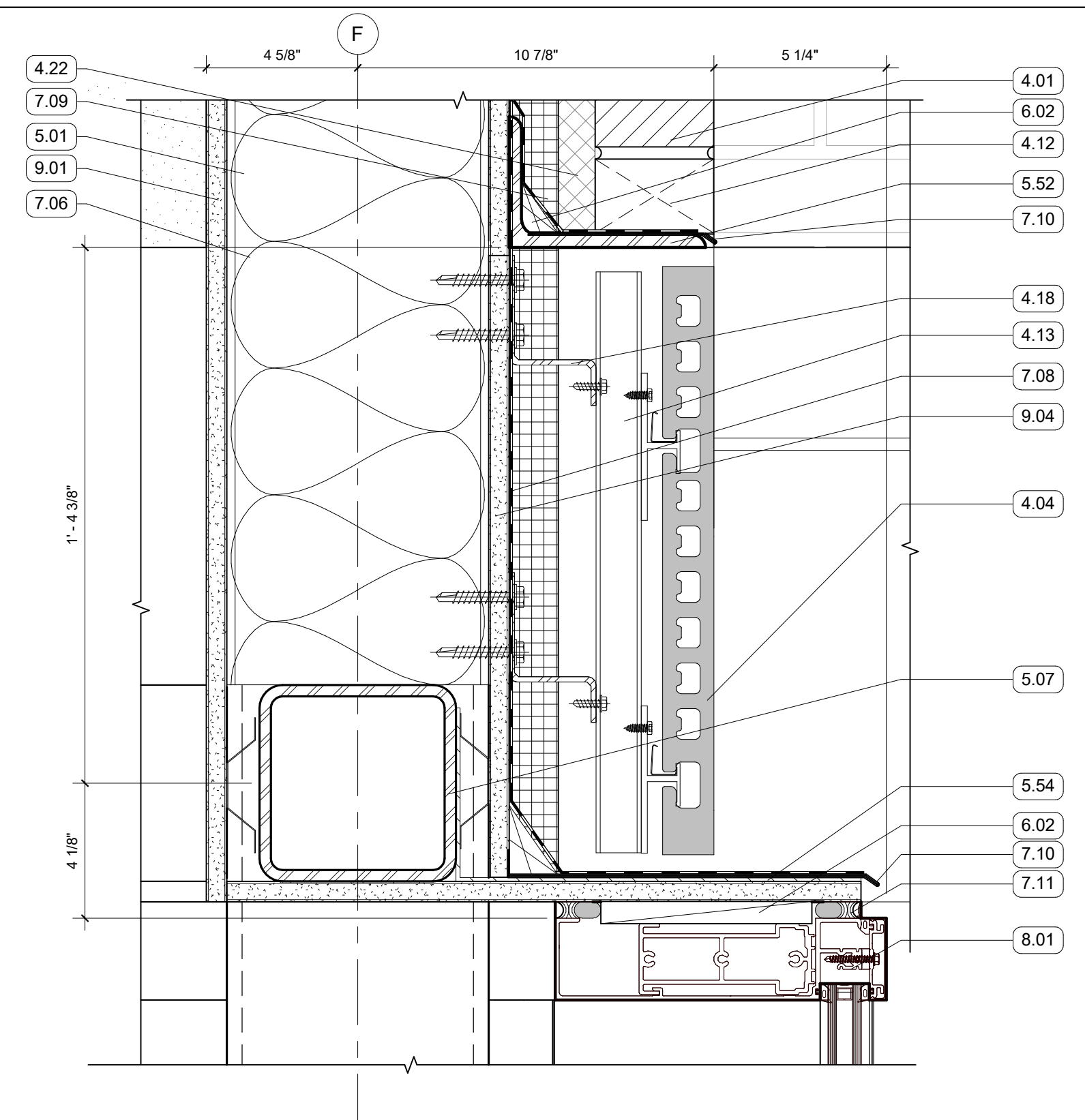
1 SECTION DETAIL  
3" = 1'-0" | RE:2/A356



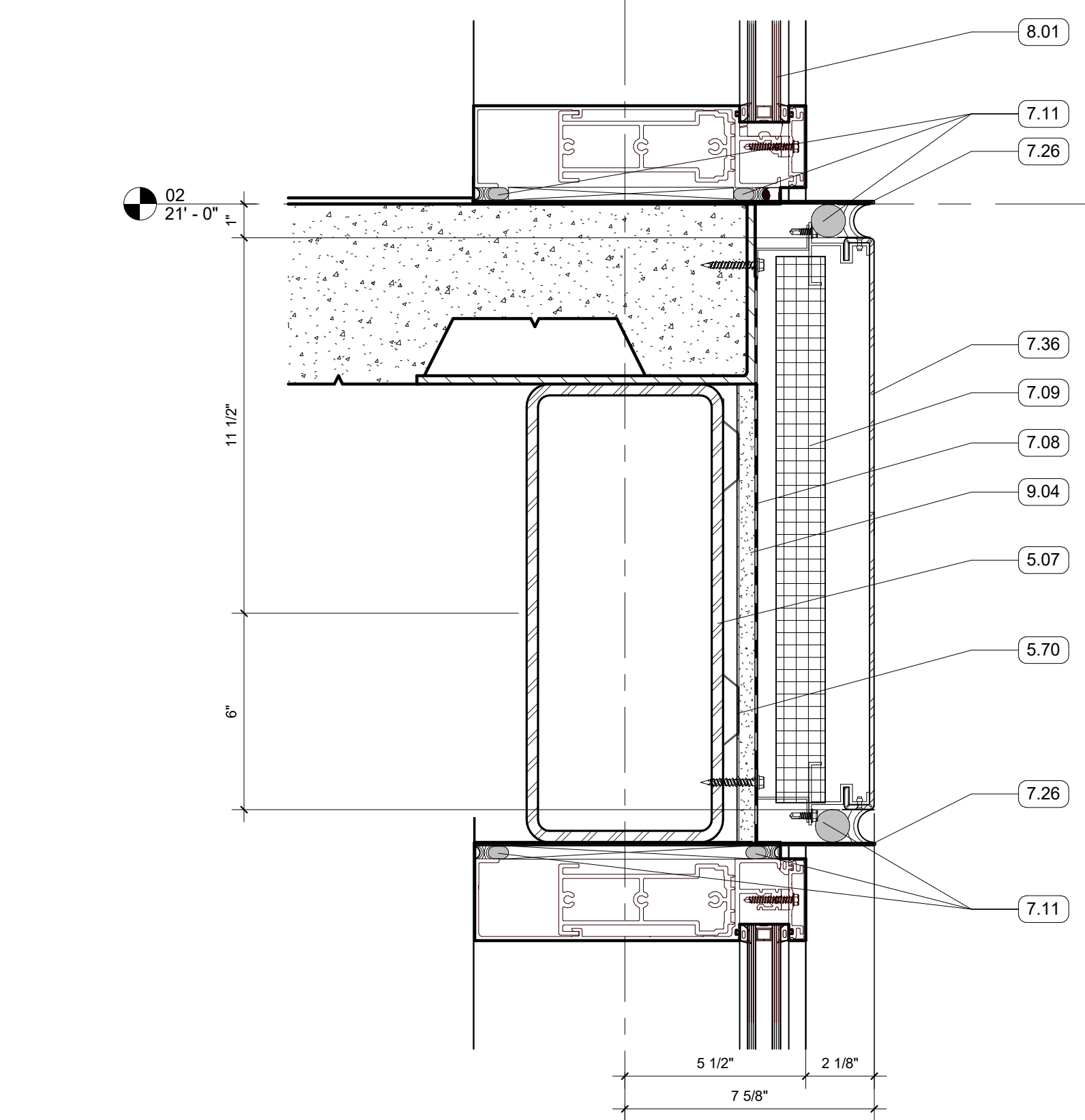
4 SECTION DETAIL - DOUBLE MASONRY LINTEL  
3" = 1'-0" | RE:2/A356



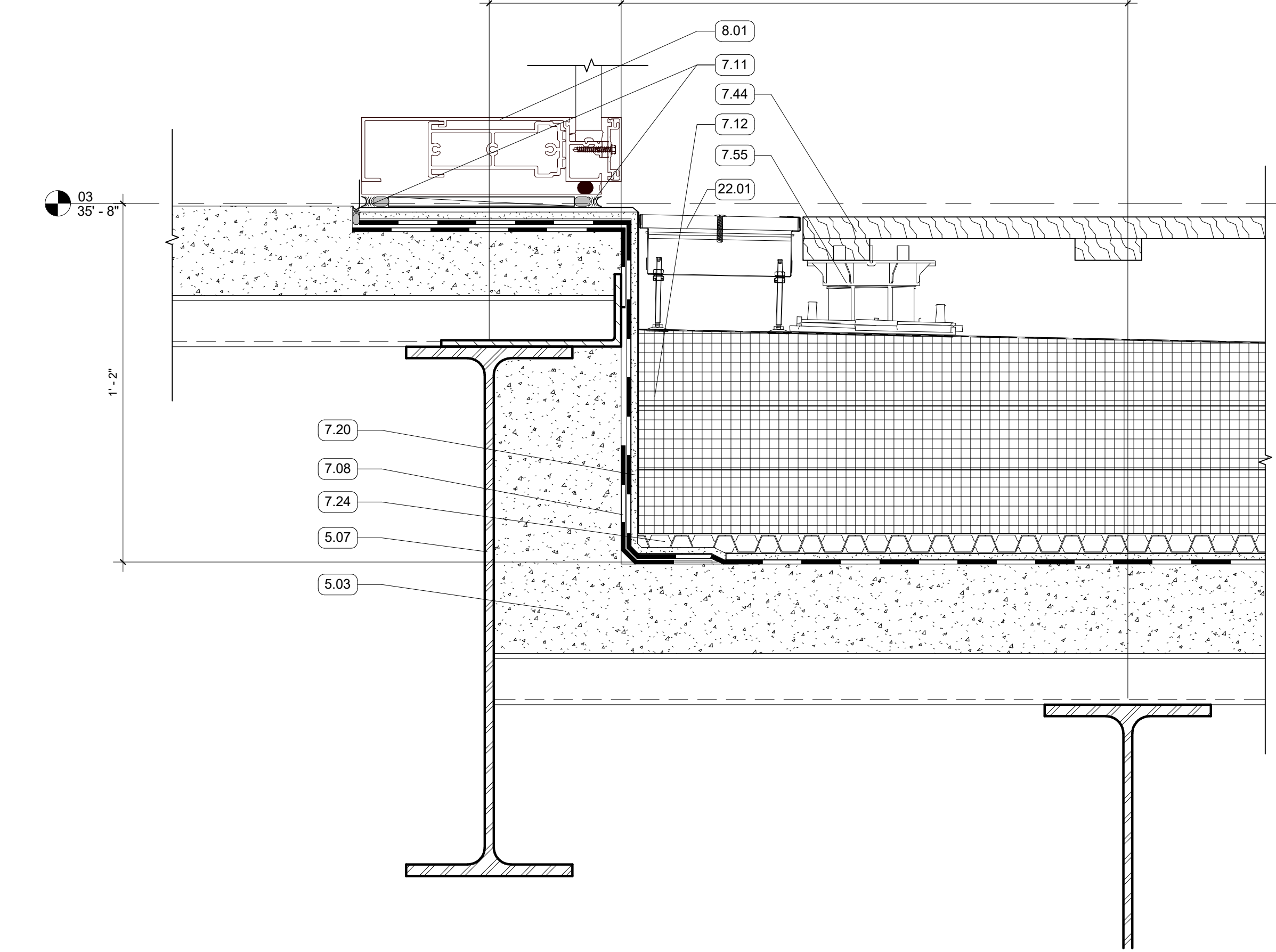
3 SECTION DETAIL  
3" = 1'-0" | RE:2/A356



7 SECTION DETAIL  
3" = 1'-0" | RE:4/A356



6 SECTION DETAIL - METAL HEAD AND SILL  
3" = 1'-0" | RE:1/A357



5 SECTION DETAIL - 3RD FLOOR TERRACE  
3" = 1'-0" | RE:3/A356

- GENERAL NOTES
- ALL EXPOSED STRUCTURAL FRAMING & DECKING TO BE PAINTED
- KEYNOTES
- FACE BRICK VENEER, RUNNING BOND
  - 4" RECESSED BRICK COURSE, RUNNING BOND, RECESS HORIZONTAL BANDS AN ADDITIONAL 1/2"
  - TERRA COTTA RAINSCREEN - STACK BOND, UNIT SIZE #1
  - FACE BRICK, SPECIAL SHAPE SILL
  - MASONRY ANCHORS
  - WEEP VENTS AT 24" O.C. MIN
  - NON-CONTINUOUS ALUMINUM SUBSTRUCTURE
  - CONTINUOUS ALUMINUM SUBSTRUCTURE
  - MORTAR NET
  - BONDED CORNER
  - 8" METAL STUD FRAMING
  - 8" METAL STUD TRACK
  - 5 1/2" COMPOSITE MTL DECK AND CONCRETE SLAB
  - 6" METAL TRACK
  - 6" METAL STUD FRAMING
  - STRUCTURAL STEEL FRAMING
  - 3 5/8" METAL STUD FRAMING
  - 3 5/8" METAL TRACK
  - BRIDGE STUD AS REQ'D
  - EDGE ANGLE
  - BOX BEAM
  - GALVANIZED LOOSE LINTEL - PAINT TO MATCH BRICK WHERE EXPOSED
  - SHELF ANGLE - RE: STRUCTURAL
  - BRAKE METAL TRIM
  - DEFLECTION TRACK
  - 4" MTL STUD FRAMING - SEE STRUCTURAL
  - 4" MTL TRACK
  - 1/2" HAT CHANNEL
  - WOOD BLOCKING
  - BATT INSULATION, SIZED TO MATCH STUD DEPTH
  - AWB
  - MINERAL FIBER BOARD INSULATION
  - THRU-WALL FLASHING, SLOPED TO DRAIN
  - BACKER ROD AND SEALANT
  - 2 1/2" POLYISO INSULATION
  - 1/4" COVERBOARD
  - ROOF DRAINAGE MAT
  - FORMED ALUMINUM SILL
  - SPRAYED FOAM INSULATION
  - MCM PANEL
  - DRIP EDGE
  - WOOD PAVER TILES; SEE LANDSCAPE FOR TILE LAYOUT PATTERN
  - ADJUSTABLE PEDESTALS
  - ALUM STOREFRONT, CURTAINWALL, OR WINDOW SYSTEM. SEE OPENING SCHEDULE
  - 5/8" GYPSUM BOARD; SEE FINISH PLAN FOR FINISH MATERIAL
  - 5/8" EXTERIOR SHEATHING
  - TRENCH DRAIN - CONNECT TO PLUMBING

ASHE I BROUSSARD I WEINZETTLE ARCHITECTS

TIPTON ASSOCIATES

CONSULTANTS

Monsieur & Associates, LLC  
CABDO Landscape Architecture, LLC  
Fox Neut Engineering and Structural  
Sela O'Brien  
Mechanical Engineering  
Associated Design Group, Inc.  
Electrical  
General Contractor  
Specialty Architect

ISSUE FOR BID

LOUISIANA STATE UNIVERSITY  
ALEXANDRIA  
DOWNTOWN HEALTH SERVICES CENTER  
800 JACKSON ST.  
ALEXANDRIA, LA 71301

PROJECT # 19-602-23-01  
ARCH PROJECT # 2023.20 / 1931.00-23  
SITE ID: NEW SITE CODE: 4-40-023  
DATE OCTOBER 10, 2023

Ashe Broussard Weinzettl Architects, LLP  
Tipton Associates APAC, A Joint Venture  
301 Jackson Street, Suite 205  
Alexandria, LA 71301

NO. REVISION DATE

SEAL OF THE STATE OF LOUISIANA  
JANUARY 1, 2024  
STATE OF LOUISIANA  
ARCHITECT  
RECEIVED  
ARCHITECT

EXTERIOR SECTION DETAILS

A518