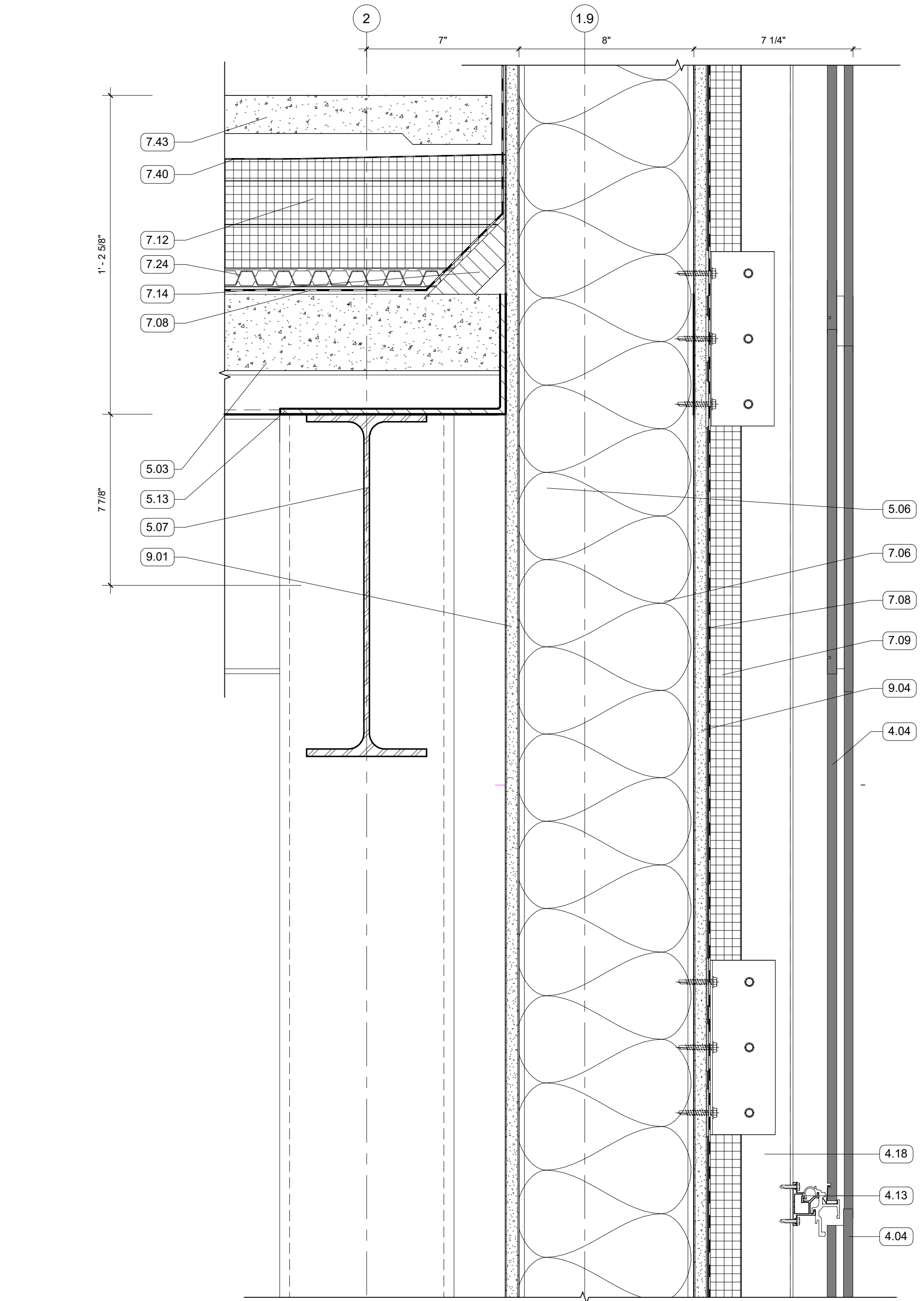
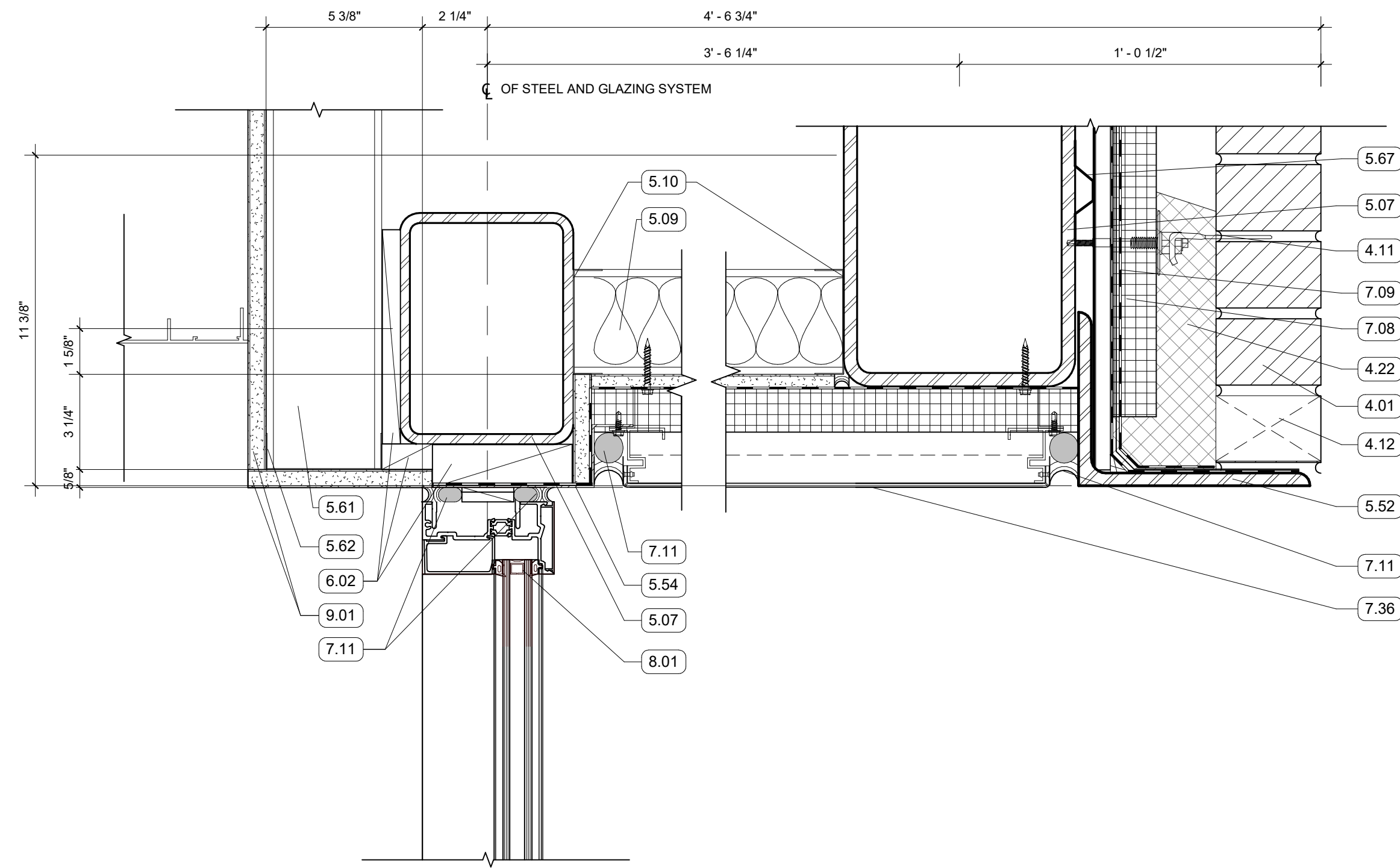


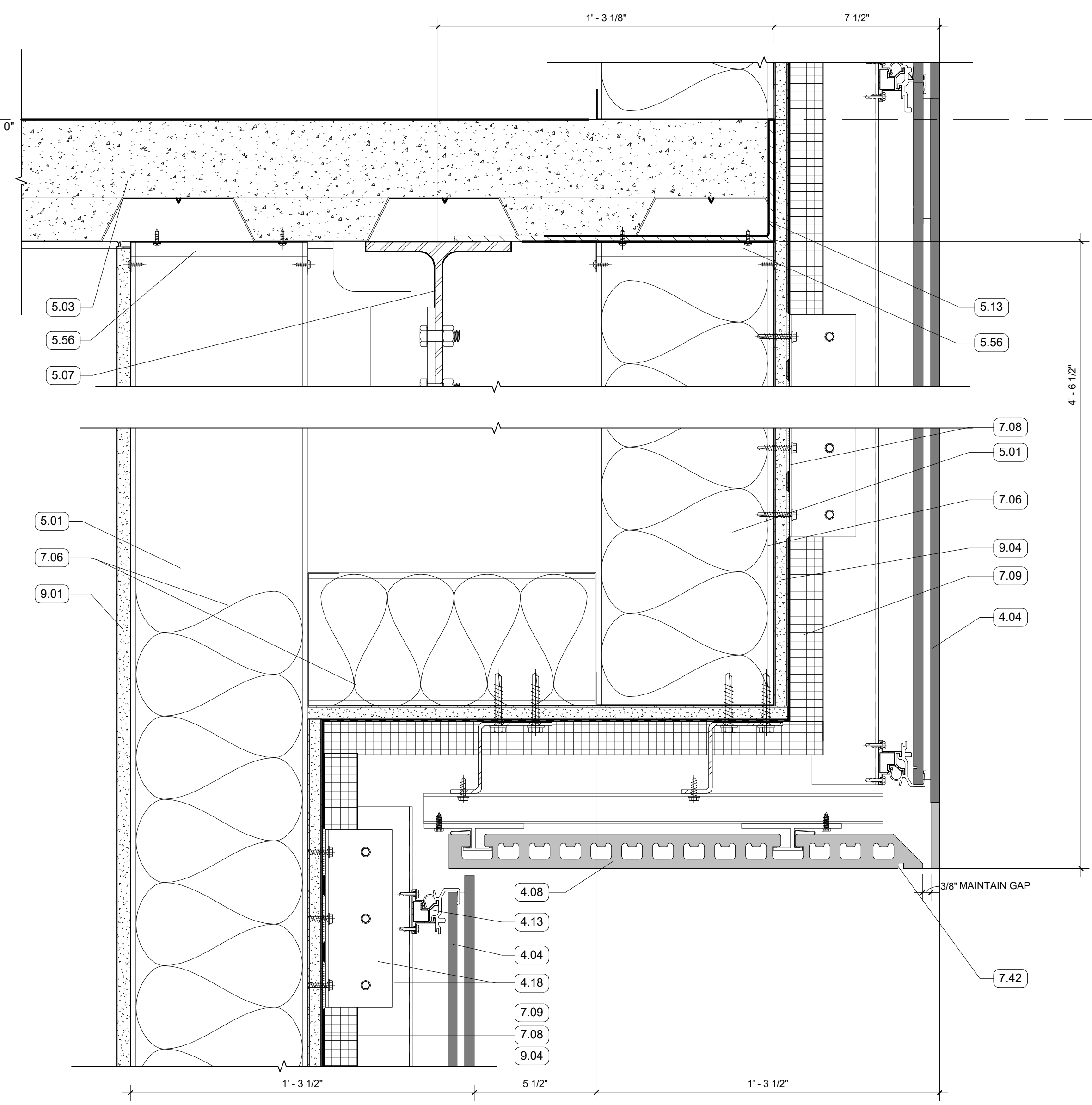
1 SECTION DETAIL
3" = 1'-0" | RE: 4/A354



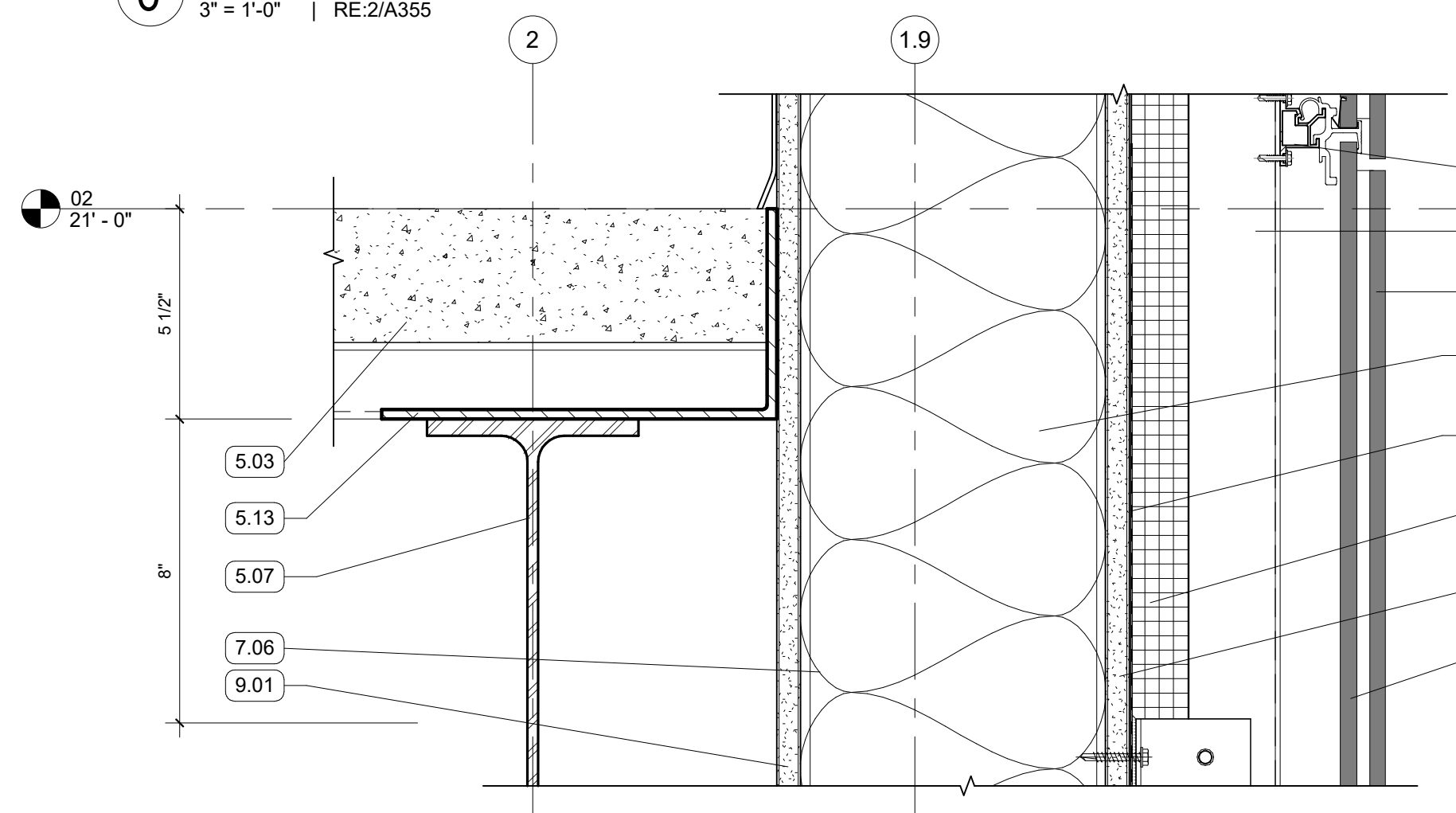
3 SECTION DETAIL
3" = 1'-0" | RE: 2/A355



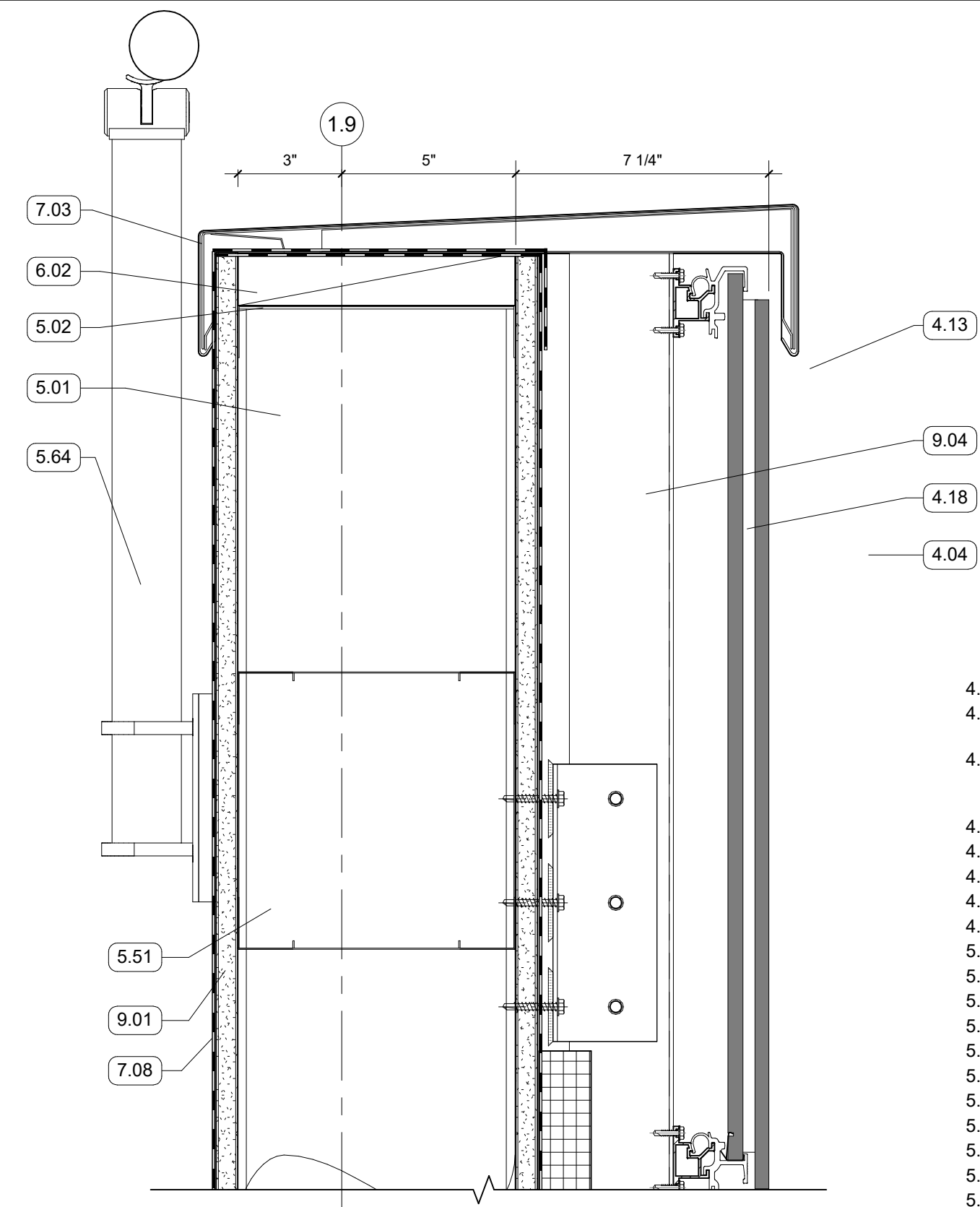
2 SECTION DETAIL - MCM SOFFIT 3RD FLOOR CLERESTORY
3" = 1'-0" | RE: 3/A355



4 SECTION DETAIL - TERRA COTTA SOFFIT DETAIL B
3" = 1'-0" | RE: 3/A355



6 SECTION DETAIL - PARAPET RAILING
3" = 1'-0" | RE: 2/A355



5 SECTION DETAIL
3" = 1'-0" | RE: 2/A355

- GENERAL NOTES
- ALL EXPOSED STRUCTURAL FRAMING & DECKING TO BE PAINTED
- KEYNOTES
- 4.01 FACE BRICK VENEER, RUNNING BOND
 - 4.04 TERRA COTTA RAINSCREEN - STACK BOND, UNIT SIZE #1
 - 4.08 PLASTER SOFFIT SYSTEM ON MTL. FRAMING - ALTERNATE NO. 2 REPLACES PLASTER SYSTEM WITH TERRA COTTA LARGE FORMAT SOFFIT PANELS
 - 4.11 MASONRY ANCHORS
 - 4.12 WEEP VENTS AT 24" O.C. MIN
 - 4.13 NON-CONTINUOUS ALUMINUM SUBSTRUCTURE
 - 4.18 CONTINUOUS ALUMINUM SUBSTRUCTURE
 - 4.22 MORTAR NET
 - 5.01 8" METAL STUD FRAMING
 - 5.02 8" METAL STUD TRACK
 - 5.03 5 1/2" COMPOSITE MTL. DECK AND CONCRETE SLAB
 - 5.05 6" METAL TRACK
 - 5.06 6" METAL STUD FRAMING
 - 5.07 STRUCTURAL STEEL FRAMING
 - 5.09 3 5/8" METAL STUD FRAMING
 - 5.10 3 5/8" METAL TRACK
 - 5.13 EDGE ANGLE
 - 5.51 BOX BEAM
 - 5.52 GALVANIZED LOOSE LINTEL - PAINT TO MATCH BRICK WHERE EXPOSED
 - 5.54 BRAKE METAL TRIM
 - 5.56 DEFLECTION TRACK
 - 5.61 4" MTL STUD FRAMING - SEE STRUCTURAL
 - 5.62 4" MTL TRACK
 - 5.64 STAINLESS STEEL DECORATIVE METAL RAILING
 - 5.67 FURRING CHANNEL
 - 6.02 WOOD BLOCKING
 - 7.03 PREFINISHED COPING FLASHING
 - 7.06 BATT INSULATION, SIZED TO MATCH STUD DEPTH
 - 7.08 AWB
 - 7.09 MINERAL FIBER BOARD INSULATION
 - 7.11 BACKER ROD AND SEALANT
 - 7.12 2 1/2" POLYISO INSULATION
 - 7.14 CAFT STRIP
 - 7.24 ROOF DRAINAGE MAT
 - 7.29 SPRAYED FOAM INSULATION
 - 7.36 MCM PANEL
 - 7.40 FILTER FABRIC
 - 7.42 DRIP EDGE
 - 7.43 PEDESTAL PAVER - SEE ROOF SYSTEM IN ALTERNATE NO. 1
 - 7.45 CUBE TRAYS
 - 7.55 ADJUSTABLE PEDESTALS
 - 8.01 ALUM STOREFRONT, CURTAINWALL, OR WINDOW SYSTEM. SEE OPENING SCHEDULE
 - 8.09 BACK PANEL
 - 8.10 STEEL CURTAIN WALL ANCHOR W/ NON-METALLIC SHIMS
 - 9.01 5/8" GYPSUM BOARD, SEE FINISH PLAN FOR FINISH MATERIAL
 - 9.04 5/8" EXTERIOR SHEATHING

ASHE I BROUSSARD I WEINZETTLE ARCHITECTS

TIPTON ASSOCIATES

CONSULTANTS

Monsieur & Associates, LLC
CABO Landscape Architecture, LLC
Fox Nease Engineering, LLC
Sela O'Brien
Mechanical Engineering
Associated Design Group, Inc.
Specialty Architects

LOUISIANA STATE UNIVERSITY ALEXANDRIA
DOWNTOWN HEALTH SERVICES CENTER
800 JACKSON ST.
ALEXANDRIA, LA 71301

ISSUE FOR BID

PROJECT # 19-002-23-01
ARCH PROJECT # 2023.20 / 1031.00-23
SITE ID: NEW SITE CODE: 4-00-023
DATE OCTOBER 10, 2023

Ashe Broussard Weinzettl Architects, LLP
Tipton Associates APAC, A Joint Venture
301 Jackson Street, Suite 205
Alexandria, LA 71301

NO. REVISION DATE

STATE OF LOUISIANA
JULY 1, 2023
RECEIVED
ARCHITECT

EXTERIOR SECTION DETAILS

A516