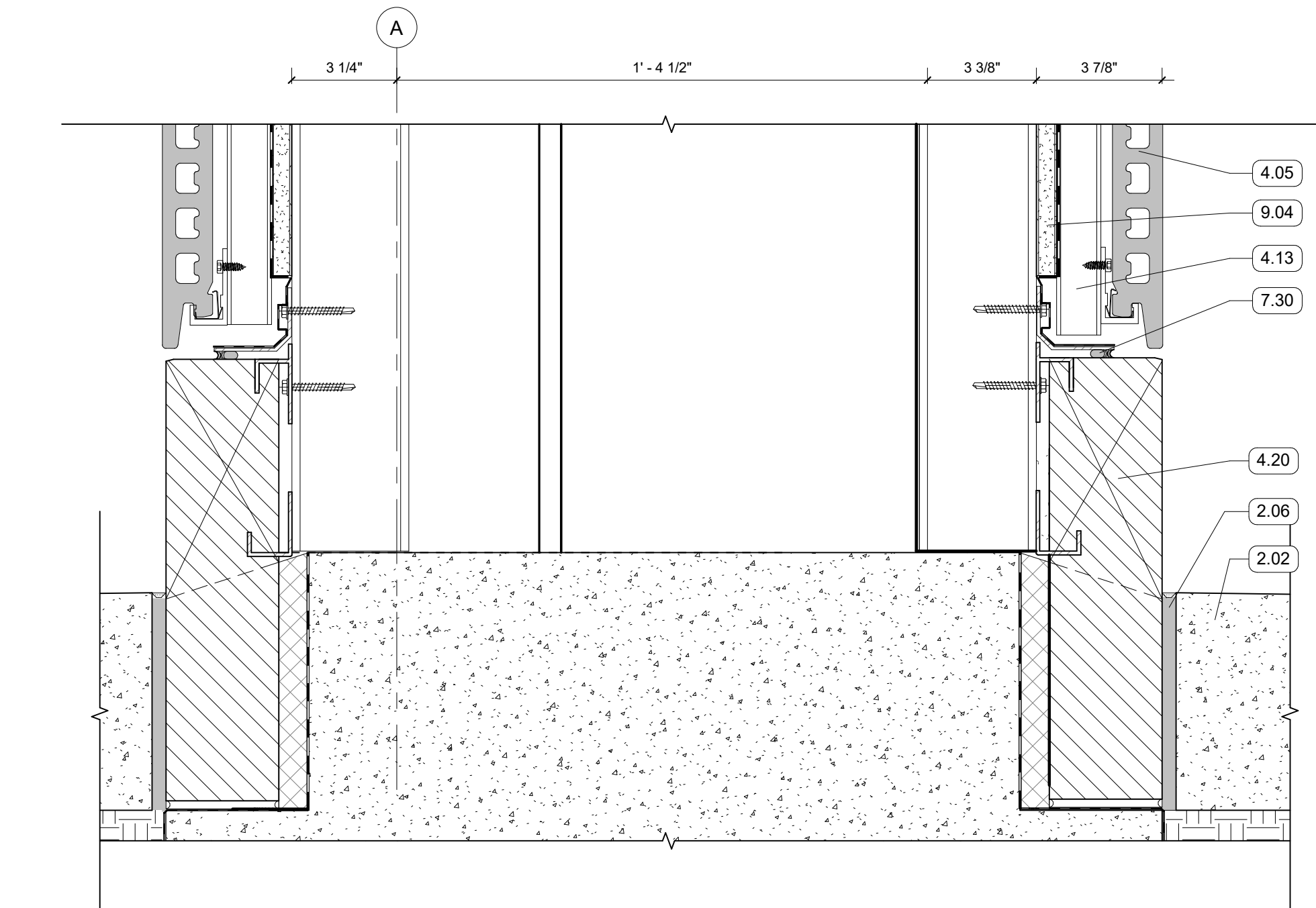
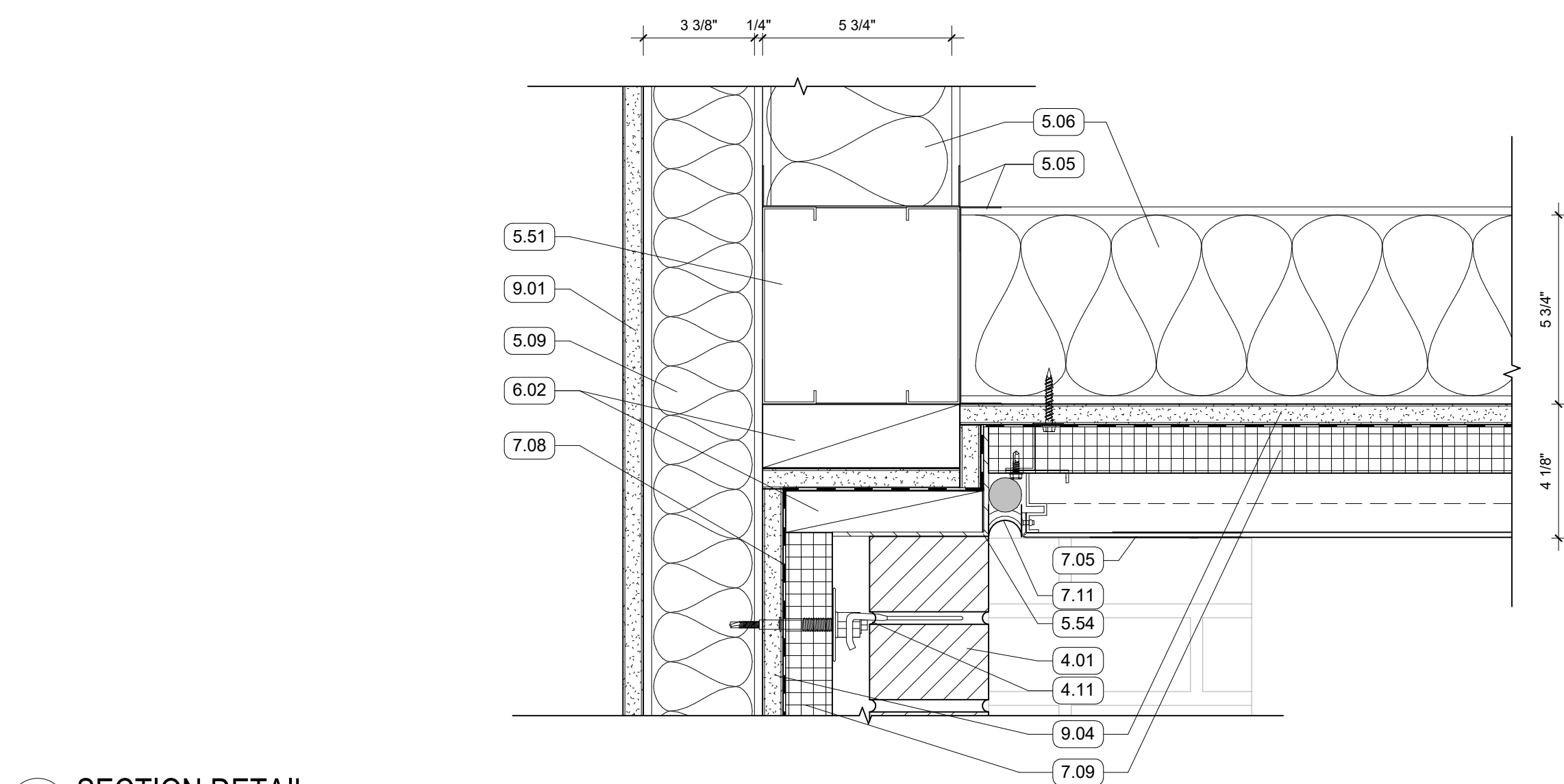


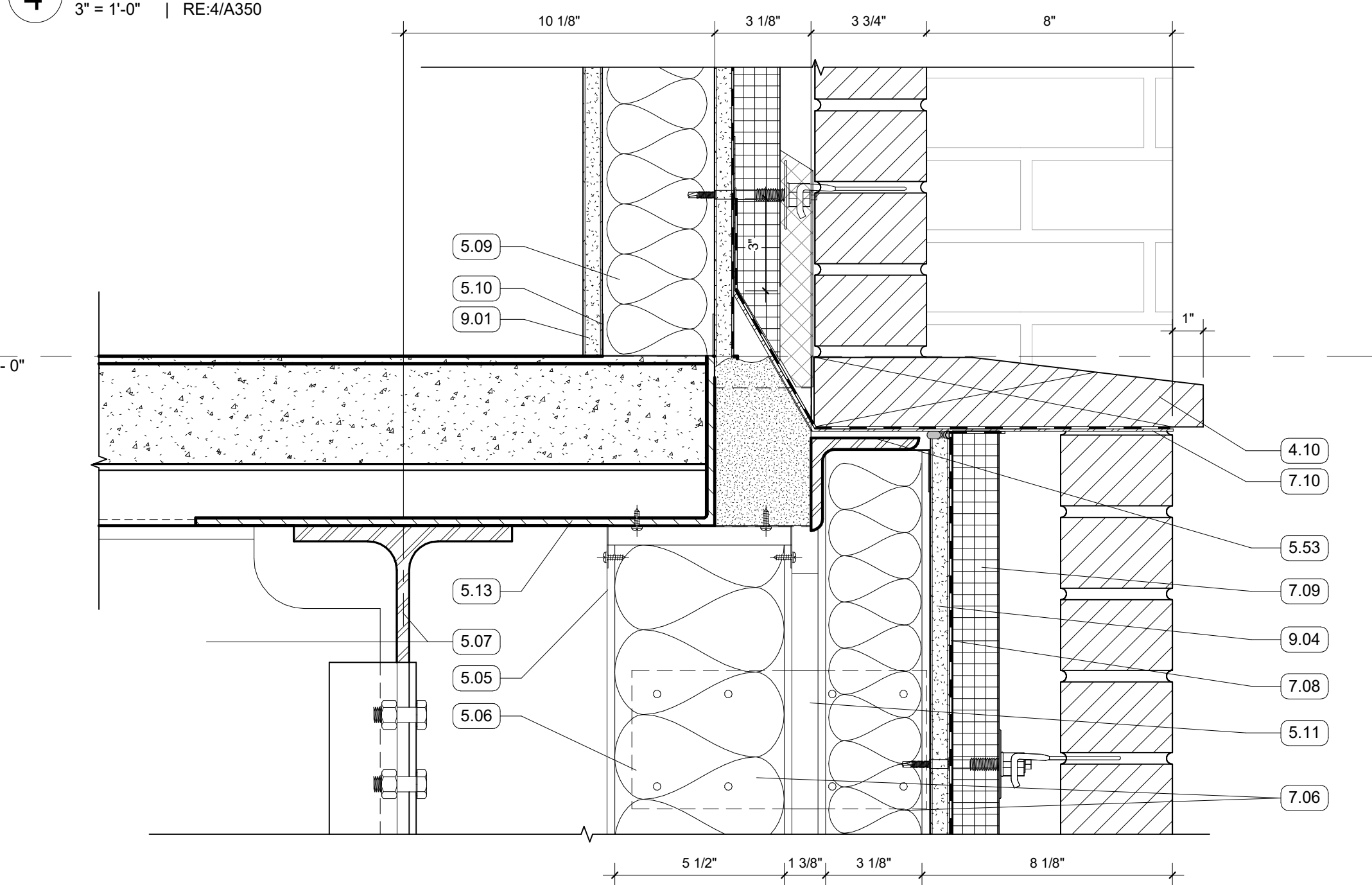
2 SECTION DETAIL  
3" = 1'-0" | RE:3/A350



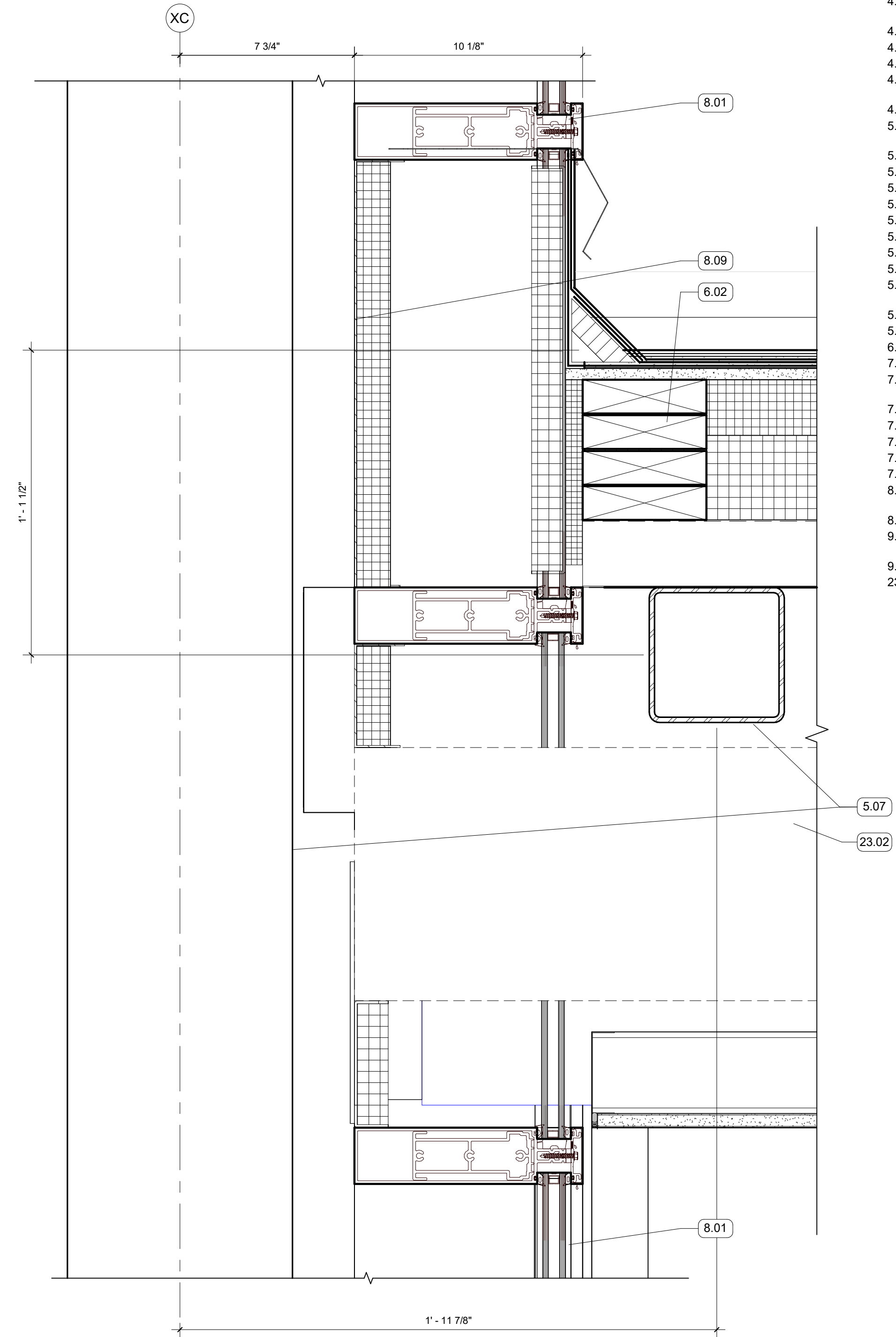
1 SECTION DETAIL - COLUMN WRAP BASE  
3" = 1'-0" | RE:3/A350



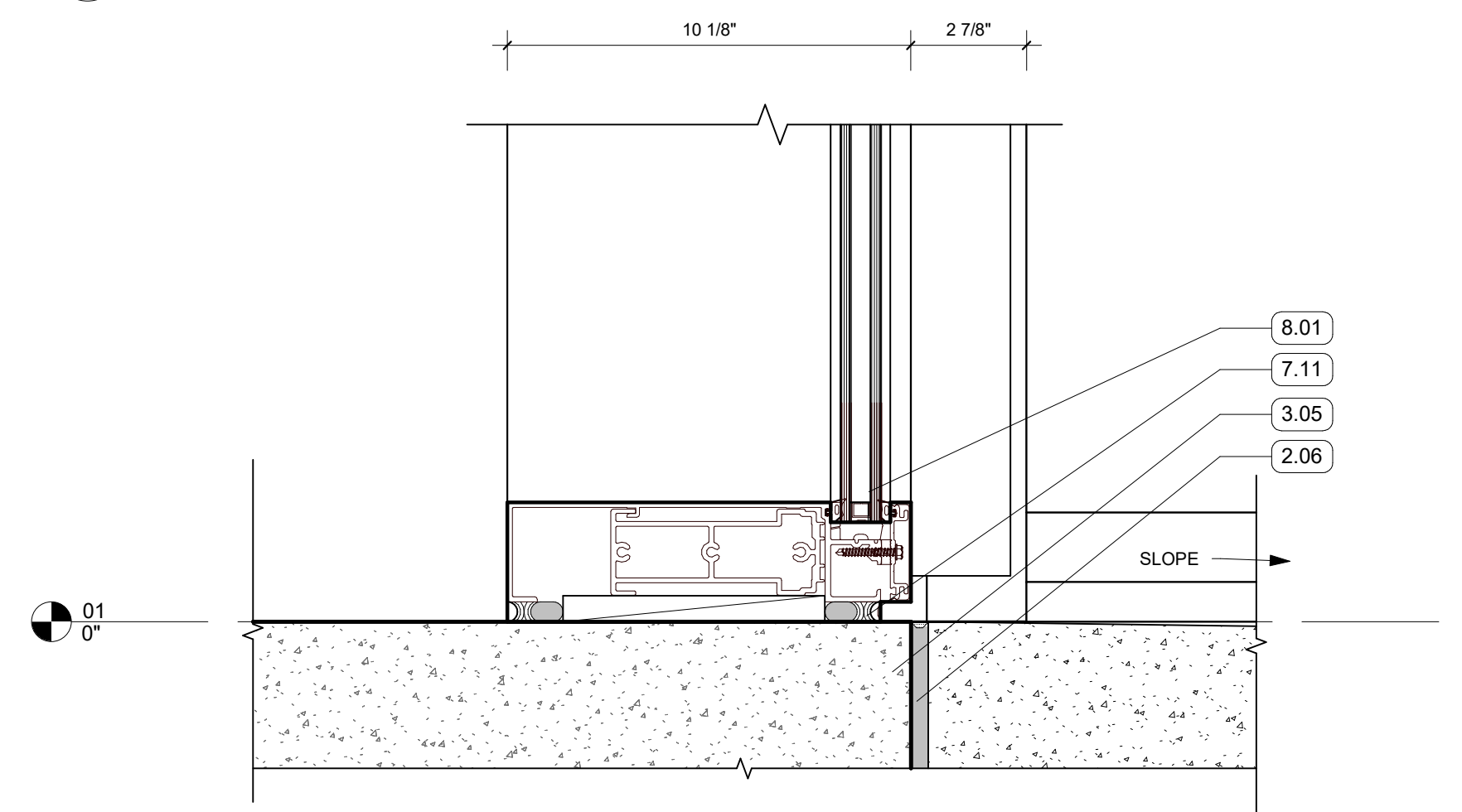
4 SECTION DETAIL  
3" = 1'-0" | RE:4/A350



3 SECTION DETAIL  
3" = 1'-0" | RE:4/A350



6 SECTION DETAIL  
3" = 1'-0" | RE:2/A351



5 SECTION DETAIL  
3" = 1'-0" | RE:1/A351

- GENERAL NOTES
1. ALL EXPOSED STRUCTURAL FRAMING & DECKING TO BE PAINTED
- KEYNOTES
- 2.02 CONCRETE SIDEWALK
  - 2.06 PREFORMED EXPANSION FILLER & SEALANT
  - 3.05 CEMENT PARGE COAT ON EXPOSED SLAB EDGE
  - 4.01 FACE BRICK VENEER, RUNNING BOND
  - 4.05 TERRA COTTA RAINSCREEN - COLUMN WRAP, UNIT SIZE #2
  - 4.10 FACE BRICK, SPECIAL SHAPE SILL
  - 4.11 MASONRY ANCHORS
  - 4.12 WEEP VENTS AT 24" O.C. MIN
  - 4.13 NON-CONTINUOUS ALUMINUM SUBSTRUCTURE
  - 4.20 CAST STONE PANEL
  - 5.03 5 1/2" COMPOSITE MTL DECK AND CONCRETE SLAB
  - 5.05 6" METAL TRACK
  - 5.06 6" METAL STUD FRAMING
  - 5.07 STRUCTURAL STEEL FRAMING
  - 5.09 3 5/8" METAL STUD FRAMING
  - 5.10 3 5/8" METAL TRACK
  - 5.11 BRIDGE STUD AS REQ'D
  - 5.13 EDGE ANGLE
  - 5.51 BOX BEAM
  - 5.52 GALVANIZED LOOSE LINTEL - PAINT TO MATCH BRICK WHERE EXPOSED
  - 5.53 SHELF ANGLE - RE: STRUCTURAL
  - 5.54 BRAKE METAL TRIM
  - 6.02 WOOD BLOCKING
  - 7.05 MCM PANEL SOFFIT
  - 7.06 BATT INSULATION, SIZED TO MATCH STUD DEPTH
  - 7.08 AWB
  - 7.09 MINERAL FIBER BOARD INSULATION
  - 7.10 THRU-WALL FLASHING, SLOPED TO DRAIN
  - 7.11 BACKER ROD AND SEALANT
  - 7.30 FORMED ALUMINUM TRIM
  - 8.01 ALUM STOREFRONT, CURTAINWALL, OR WINDOW SYSTEM. SEE OPENING SCHEDULE
  - 8.09 BACK PANEL
  - 9.01 5/8" GYPSUM BOARD. SEE FINISH PLAN FOR FINISH MATERIAL
  - 9.04 5/8" EXTERIOR SHEATHING
  - 23.02 DUCTWORK, SEE MECHANICAL