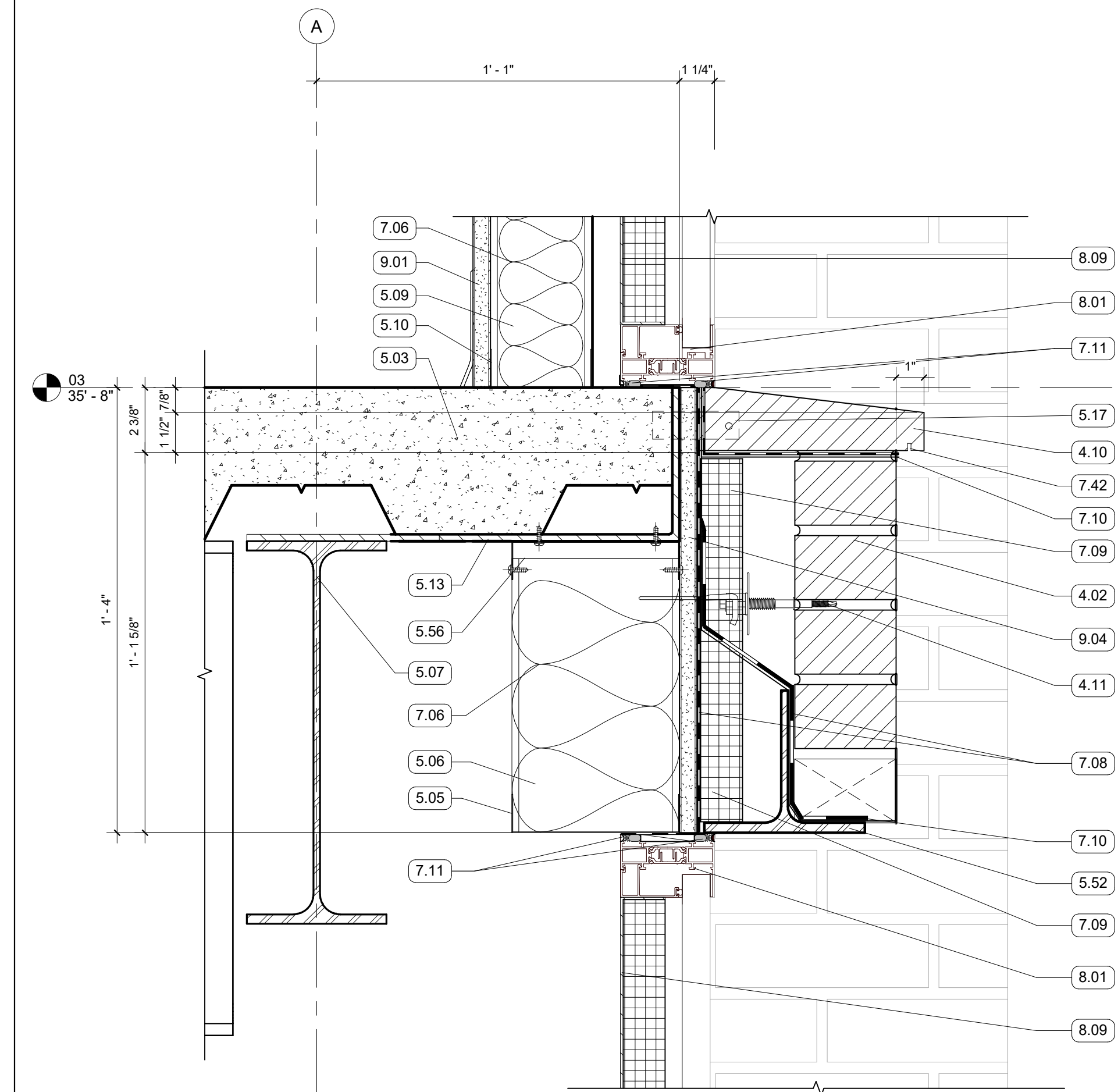
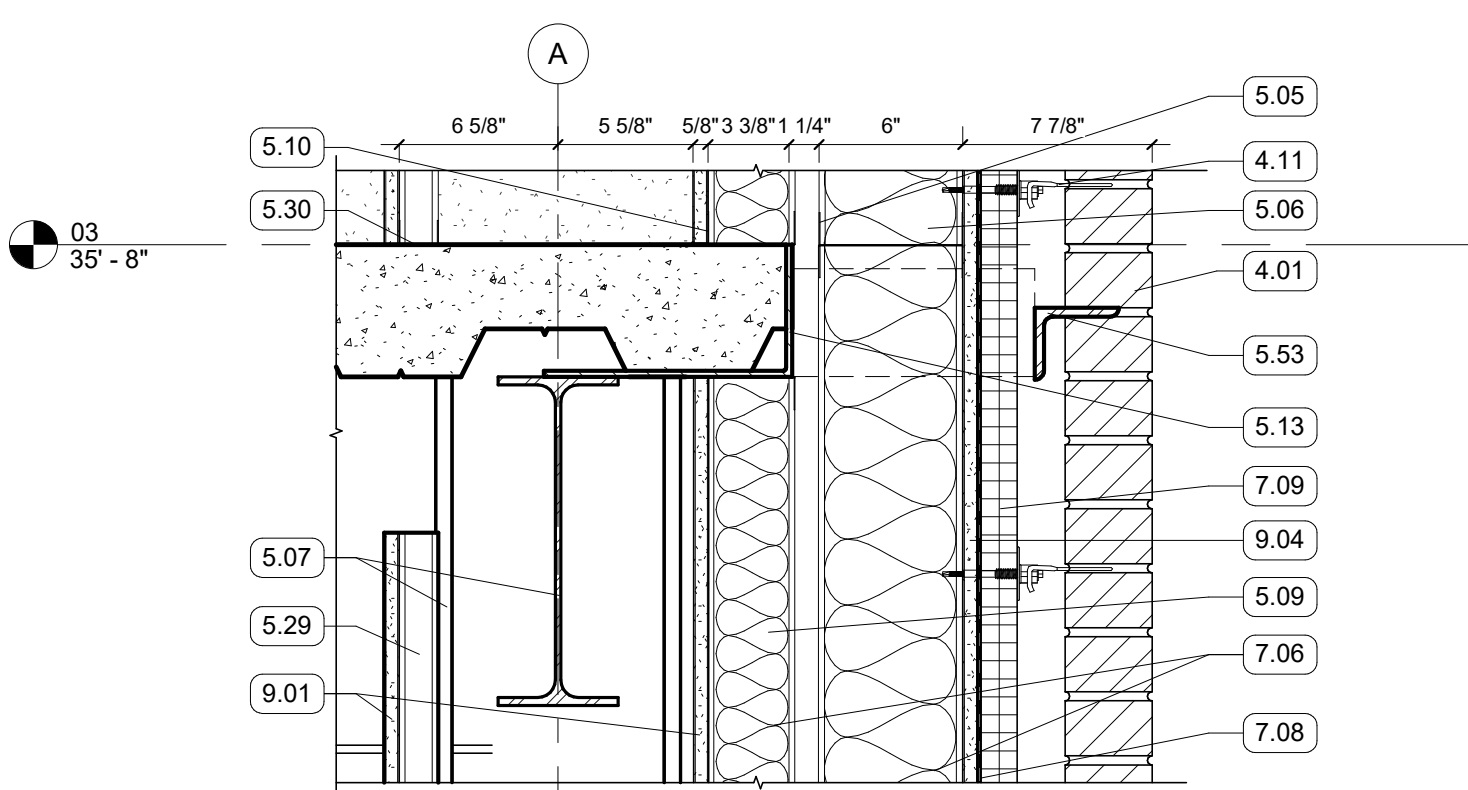


2 SECTION DETAIL
3" = 1'-0" | RE: 2/A350

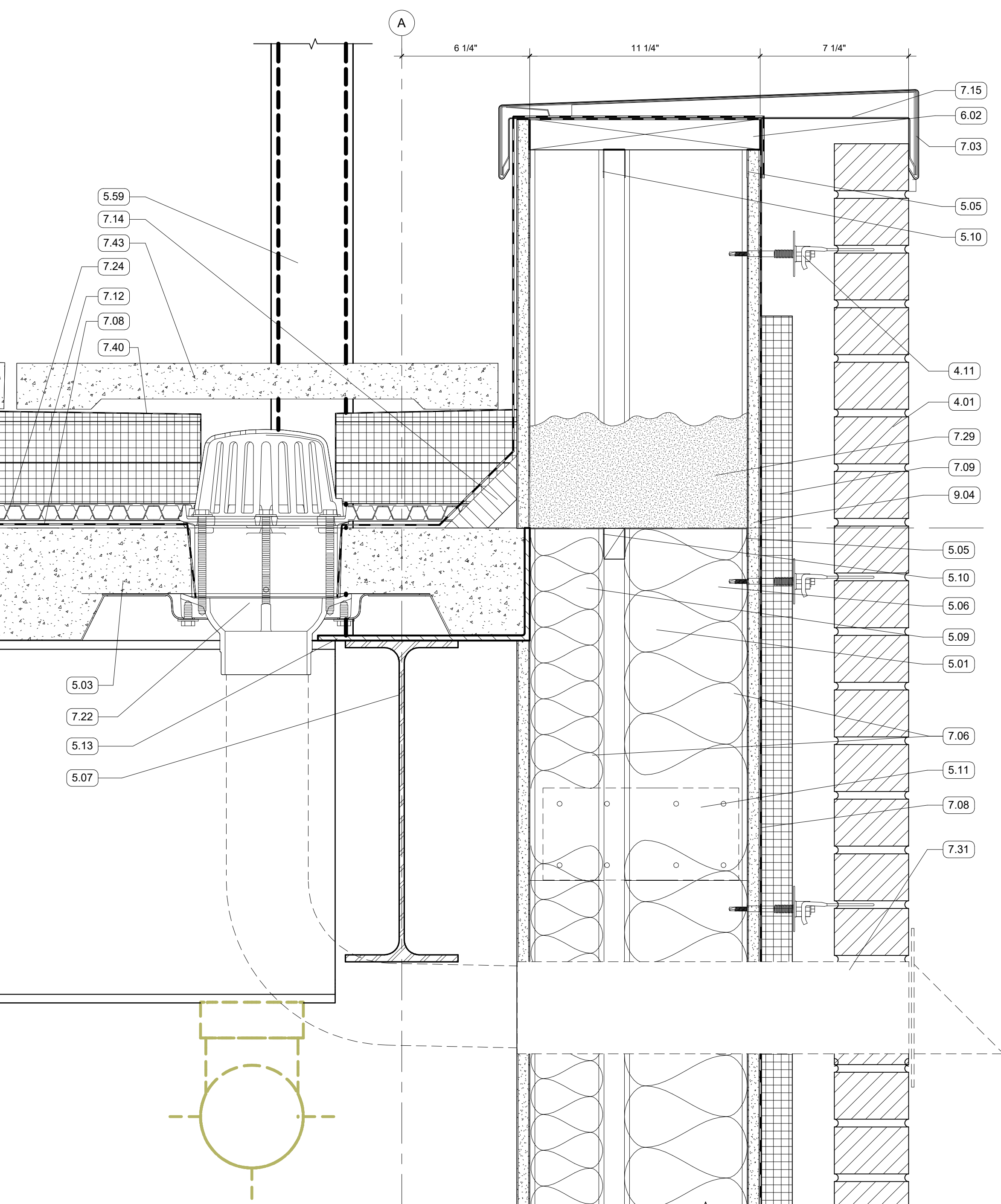


1 SECTION DETAIL - 3RD FLOOR MASONRY
3" = 1'-0" | RE: 2/A350

5 SECTION DETAIL
1 1/2" = 1'-0" | RE: 3/A350

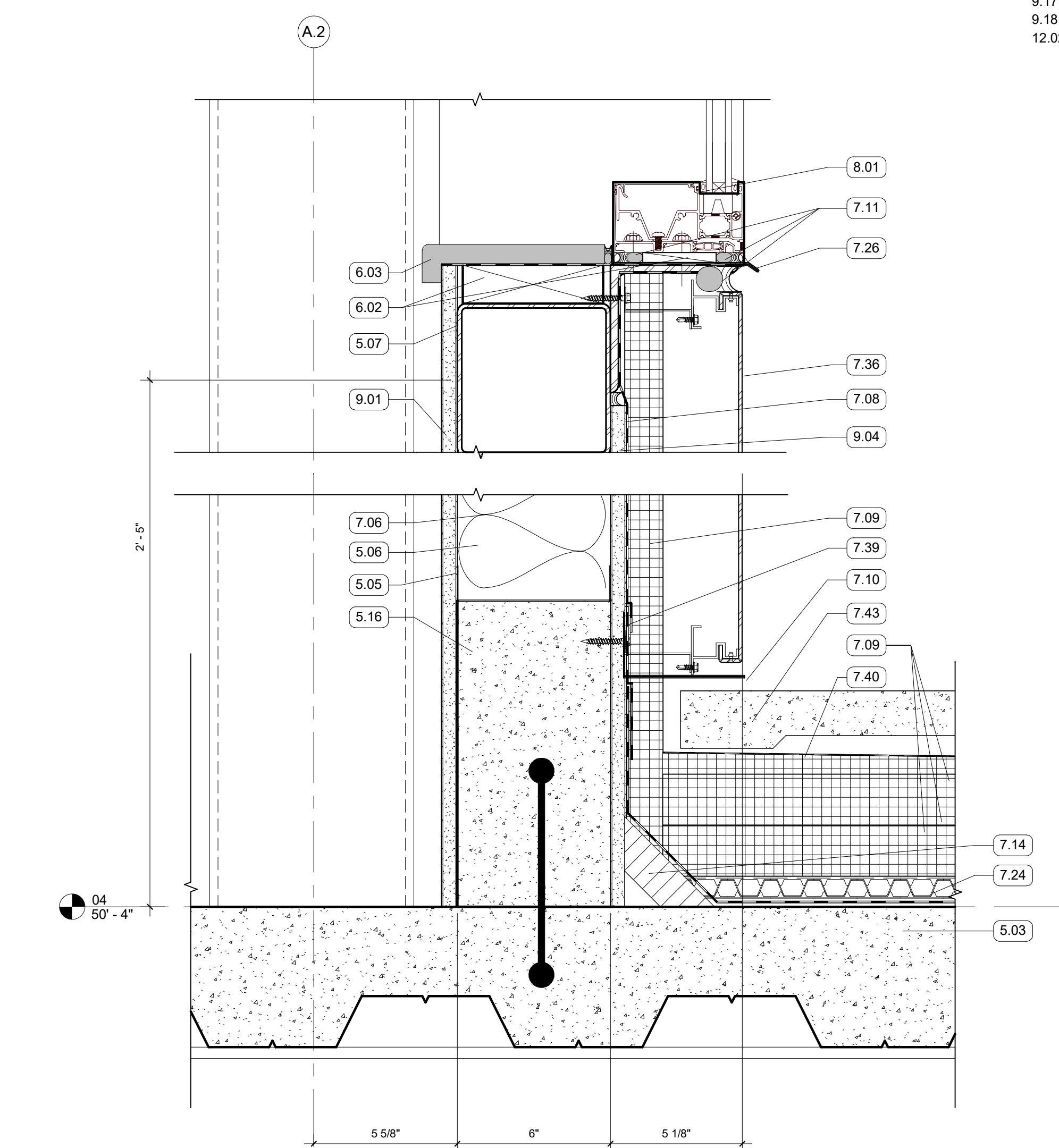


4 SECTION DETAIL
1 1/2" = 1'-0" | RE: 3/A350



3 SECTION DETAIL
3" = 1'-0" | RE: 2/A350

7 SECTION DETAIL
3" = 1'-0" | RE: 2/A350



6 SECTION DETAIL - 4TH FLOOR BASE
3" = 1'-0" | RE: 2/A350

GENERAL NOTES
1. ALL EXPOSED STRUCTURAL FRAMING & DECKING TO BE PAINTED

- KEYNOTES
- 4.01 FACE BRICK VENEER, RUNNING BOND
 - 4.02 4" RECESSED BRICK COURSE, RUNNING BOND, RECESS HORIZONTAL BANDS AN ADDITIONAL 1/2"
 - 4.10 FACE BRICK, SPECIAL SHAPE SILL
 - 4.11 MASONRY ANCHORS
 - 4.12 WEEP VENTS AT 24" O.C. MIN
 - 4.22 MORTAR NET
 - 5.01 8" METAL STUD FRAMING
 - 5.03 5 1/2" COMPOSITE MTL DECK AND CONCRETE SLAB
 - 5.04 2" MTL ROOF DECKING
 - 5.05 6" METAL TRACK
 - 5.06 6" METAL STUD FRAMING
 - 5.07 STRUCTURAL STEEL FRAMING
 - 5.09 3 5/8" METAL STUD FRAMING
 - 5.10 3 5/8" METAL STUD
 - 5.11 BRIDGE STUD AS REQ'D
 - 5.13 EDGE ANGLE
 - 5.16 CONCRETE CURB
 - 5.17 STL PLATE SUPPORT W/ WELDED DOWELS
 - 5.29 1 5/8" METAL STUD FRAMING - SEE STRUCTURAL
 - 5.30 1 5/8" METAL TRACK
 - 5.52 GALVANIZED LOOSE LINTEL - PAINT TO MATCH BRICK WHERE EXPOSED
 - 5.53 SHELF ANGLE - RE: STRUCTURAL
 - 5.54 BRAKE METAL TRIM
 - 5.56 DEFLECTION TRACK
 - 5.59 SIGNAGE SUPPORT
 - 6.02 WOOD BLOCKING
 - 6.03 SOLID SURFACE WINDOW STOOL WITH CHAMFERED EDGES
 - 7.03 PREFINISHED COPING FLASHING
 - 7.05 MCM PANEL SOFFIT
 - 7.06 BATT INSULATION, SIZED TO MATCH STUD DEPTH
 - 7.08 AWB
 - 7.09 MINERAL FIBER BOARD INSULATION
 - 7.10 THRU-WALL FLASHING, SLOPED TO DRAIN
 - 7.11 BACKER ROD AND SEALANT
 - 7.12 2 1/2" POLYISO INSULATION
 - 7.13 2 PLY SBS ROOFING SYSTEM
 - 7.14 CANT STRIP
 - 7.15 CLEAT, CONT
 - 7.22 ROOF DRAIN
 - 7.24 ROOF DRAINAGE MAT
 - 7.25 FORMED ALUMINUM WINDOW HEAD FLASHING
 - 7.26 FORMED ALUMINUM SILL
 - 7.29 SPRAYED FOAM INSULATION
 - 7.31 ST STL SCUPPER
 - 7.36 MCM PANEL
 - 7.39 TRANSITION MEMBRANE
 - 7.40 FILTER FABRIC
 - 7.42 DRIP EDGE
 - 7.43 PEDESTAL PAVER - SEE ROOF SYSTEM IN ALTERNATE NO. 1
 - 8.01 ALUM STOREFRONT, CURTAINWALL, OR WINDOW SYSTEM. SEE OPENING SCHEDULE
 - 8.09 BACK PANEL
 - 9.01 5/8" GYPSUM BOARD; SEE FINISH PLAN FOR FINISH MATERIAL
 - 9.04 5/8" EXTERIOR SHEATHING
 - 9.05 ACOUSTICAL CEILING TILE SYSTEM; SEE RCP AND FINISH SCHEDULE FOR TYPE
 - 9.07 1/2" COVER BOARD
 - 9.16 2-SIDED PERIMETER POCKET
 - 9.17 CEILING PERIMETER FACE PLATE 7"
 - 9.18 3-SIDED PERIMETER POCKET
 - 12.02 ROLLER SHADE

ASHE I BROUSSARD I WEINZETTLE ARCHITECTS

TIPTON ASSOCIATES

CONSULTANTS

MonsieurBuller & Associates, LLC
CABDO Landscape Architecture, LLC
Fox Nease Engineering, LLC
Sales O'Brien
Mechanical Engineering
Associated Design Group, Inc.
Specialty Architect

ISSUE FOR BID

LOUISIANA STATE UNIVERSITY
ALEXANDRIA
DOWNTOWN HEALTH SERVICES CENTER

800 JACKSON ST.
ALEXANDRIA, LA 71301

PROJECT #
SITE ID: NEW
DATE

19-602-23-01
2023.20 / 10.10.23
SITE CODE: 6-40-023
OCTOBER 10, 2023

Ashe Broussard Weinzettl Architects, LLP
Tipton Associates APAC, A Joint Venture
301 Jackson Street, Suite 205
Alexandria, LA 71301

NO. REVISION DATE

STATE OF LOUISIANA
NOTARY PUBLIC
COMMISSION EXPIRES 12/31/2024

STATE OF LOUISIANA
NOTARY PUBLIC
COMMISSION EXPIRES 12/31/2024

EXTERIOR SECTION DETAILS

A511