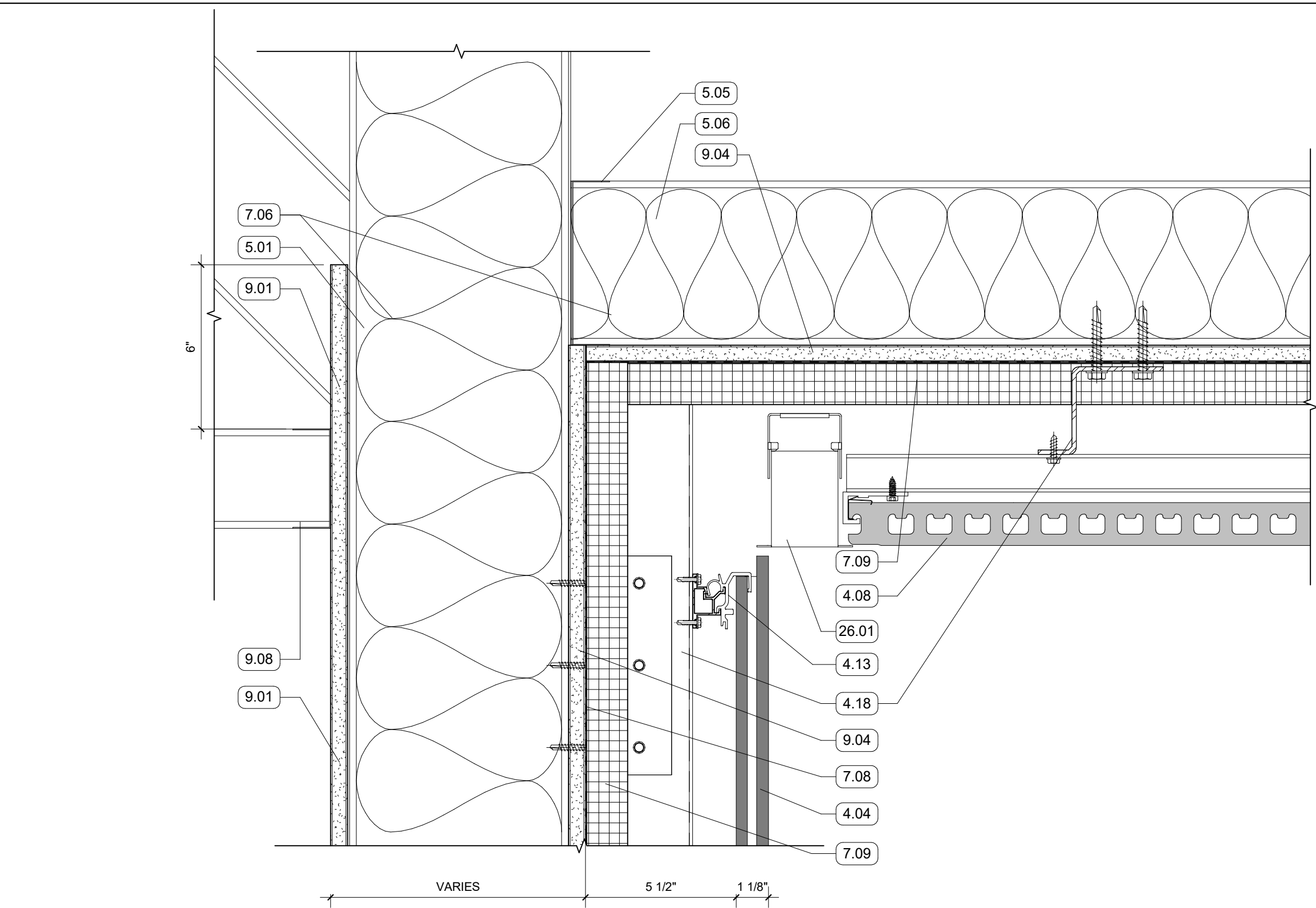
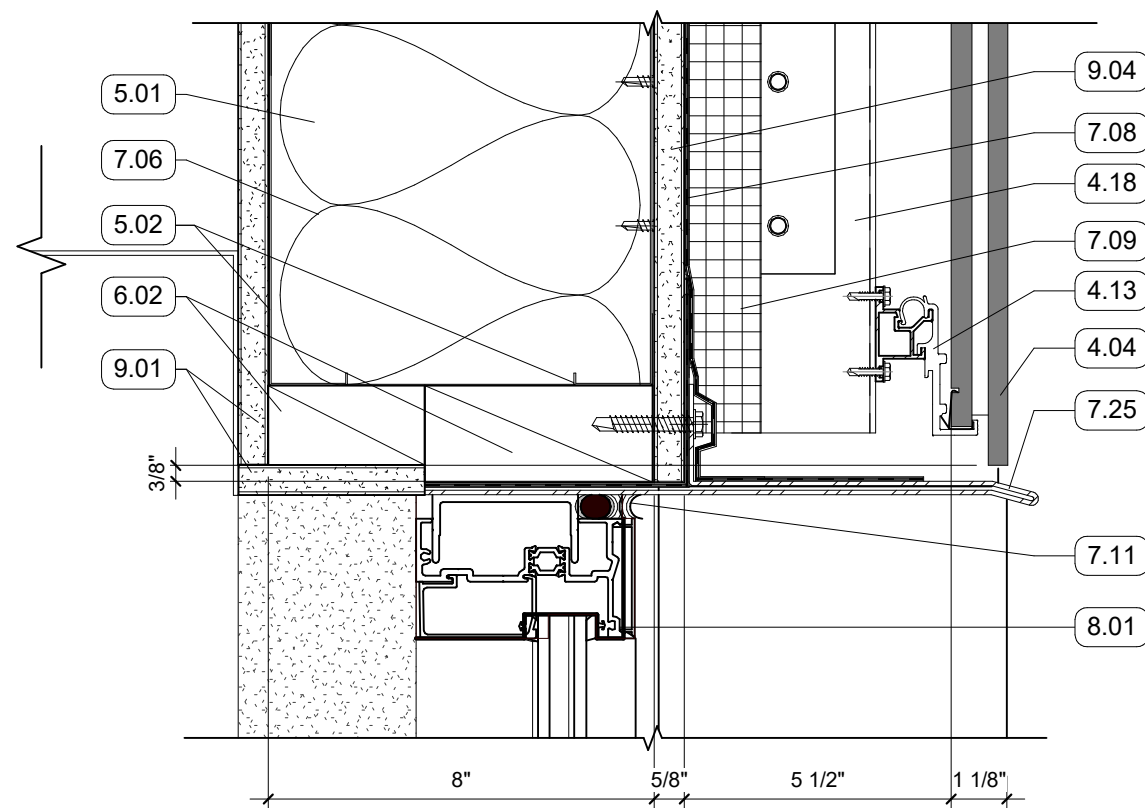


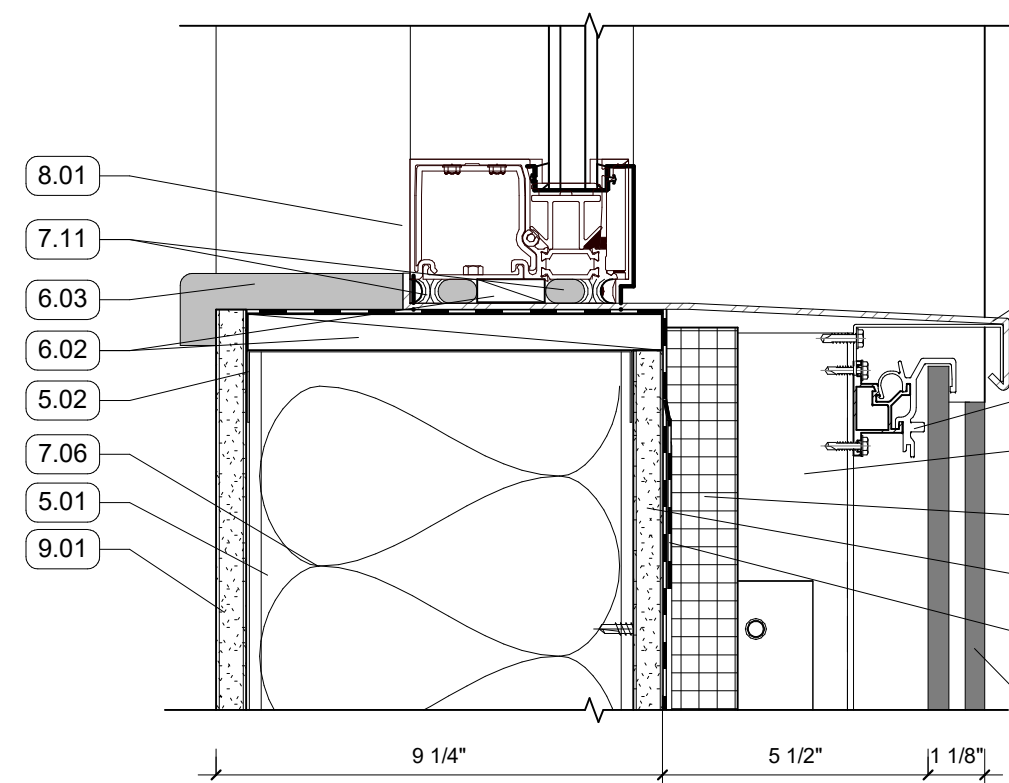
- KEYNOTES
- 2.02 CONCRETE SIDEWALK
 - 2.04 GRANULAR FILL
 - 2.05 COMPACTED FILL
 - 2.06 PREFORMED EXPANSION FILLER & SEALANT
 - 3.01 CONCRETE SLAB AND REINFORCEMENT
 - 3.02 STRUCTURAL GRADE BEAM
 - 4.01 FACE BRICK VENEER, RUNNING BOND
 - 4.04 TERRA COTTA RAINSCREEN - STACK BOND, UNIT SIZE #1
 - 4.07 TERRA COTTA RAINSCREEN, BASE CLOSURE ASSEMBLY
 - 4.08 PLASTER SOFFIT SYSTEM ON MTL. FRAMING - ALTERNATE NO. 2 REPLACES PLASTER SYSTEM WITH TERRA COTTA LARGE FORMAT SOFFIT PANELS
 - 4.09 TERRA COTTA SPECIAL SHAPE END ENCLOSURE
 - 4.10 FACE BRICK, SPECIAL SHAPE SILL
 - 4.11 MASONRY ANCHORS
 - 4.12 WEEP VENTS AT 24" O.C. MIN
 - 4.13 NON-CONTINUOUS ALUMINUM SUBSTRUCTURE
 - 4.18 CONTINUOUS ALUMINUM SUBSTRUCTURE
 - 4.20 CAST STONE PANEL
 - 4.22 MORTAR NET
 - 4.23 BONDED CORNER
 - 5.01 8" METAL STUD FRAMING
 - 5.02 8" METAL STUD TRACK
 - 5.03 5 1/2" COMPOSITE MTL. DECK AND CONCRETE SLAB
 - 5.05 6" METAL TRACK
 - 5.06 6" METAL STUD FRAMING
 - 5.07 STRUCTURAL STEEL FRAMING
 - 5.09 3 5/8" METAL STUD FRAMING
 - 5.10 3 5/8" METAL TRACK
 - 5.11 BRIDGE STUD AS REQ'D
 - 5.13 EDGE ANGLE
 - 5.14 STRUCTURAL BRICK SHELF
 - 5.17 STL. PLATE SUPPORT W/ WELDED DOWELS
 - 5.56 DEFLECTION TRACK
 - 6.02 WOOD BLOCKING
 - 6.03 SOLID SURFACE WINDOW STOOL WITH CHAMFERED EDGES
 - 7.06 BATT INSULATION, SIZED TO MATCH STUD DEPTH
 - 7.07 VAPOR RETARDER
 - 7.08 AWB
 - 7.09 MINERAL FIBER BOARD INSULATION
 - 7.10 THRU-WALL FLASHING, SLOPED TO DRAIN
 - 7.11 BACKER ROD AND SEALANT
 - 7.25 FORMED ALUMINUM WINDOW HEAD FLASHING
 - 7.26 FORMED ALUMINUM SILL SEALANT
 - 7.27 FORMED ALUMINUM TRIM
 - 7.42 DRIP EDGE
 - 8.01 ALUM. STOREFRONT, CURTAINWALL, OR WINDOW SYSTEM, SEE OPENING SCHEDULE
 - 8.09 BACK PANEL
 - 9.01 5/8" GYPSUM BOARD; SEE FINISH PLAN FOR FINISH MATERIAL
 - 9.02 WALL BASE, SEE FINISH PLAN FOR FINISH MATERIAL
 - 9.03 FLOORING, SEE FINISH PLAN FOR FINISH MATERIAL
 - 9.04 5/8" EXTERIOR SHEATHING
 - 9.08 GYP BD CEILING ON METAL FRAMING
 - 26.01 RECESSED LED FIXTURE



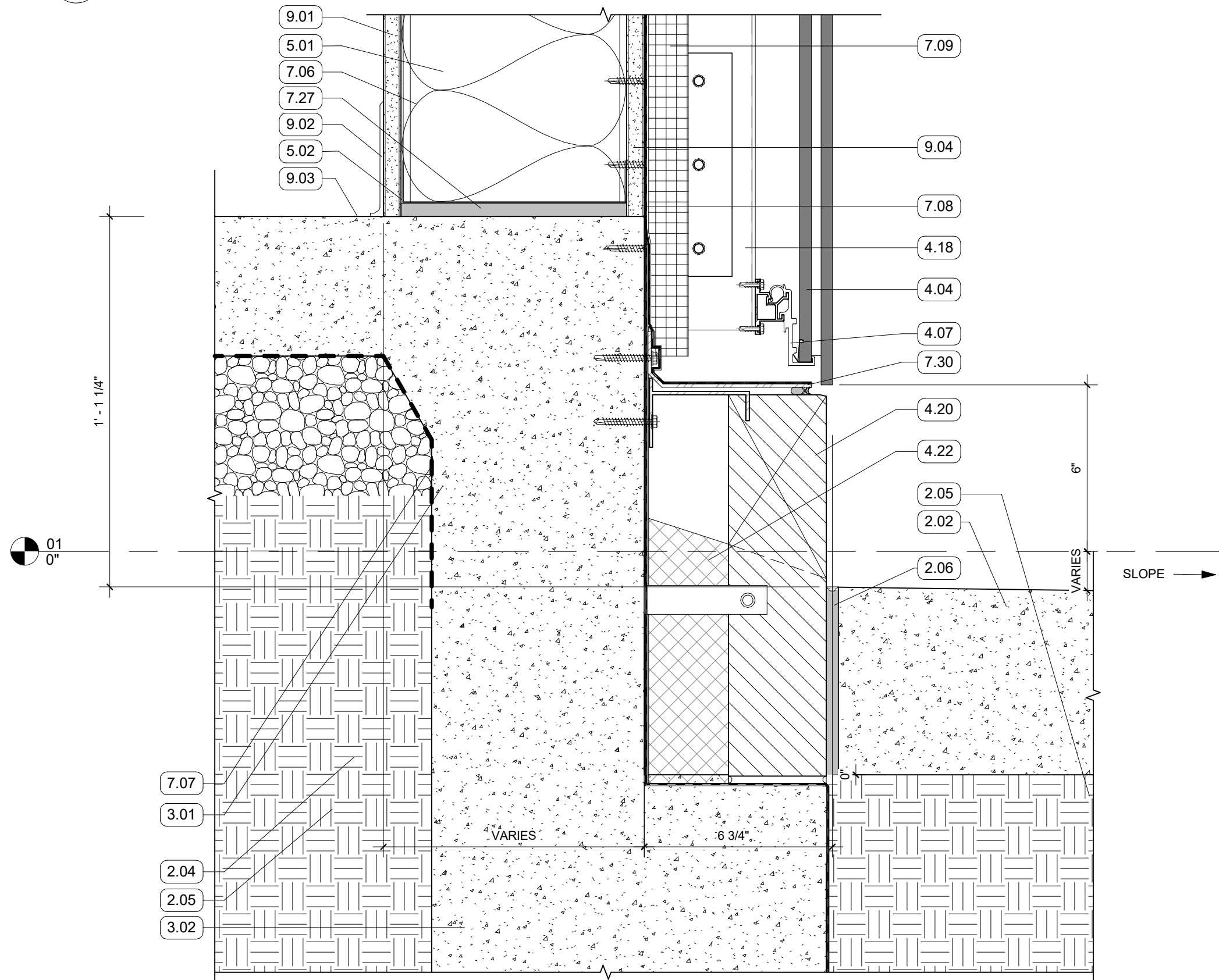
4 SECTION DETAIL - TERRA COTTA SOFFIT
3" = 1'-0" | RE:1/A350



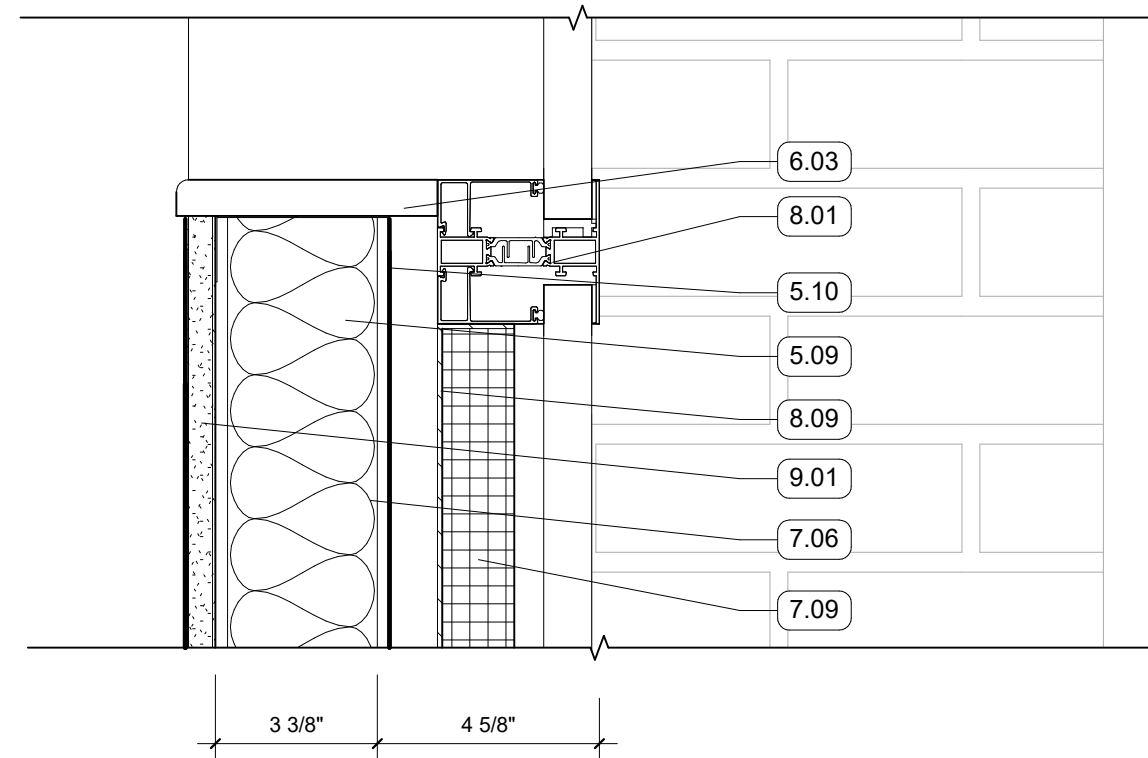
3 SECTION DETAIL - METAL HEADER
3" = 1'-0" | RE:1/A350



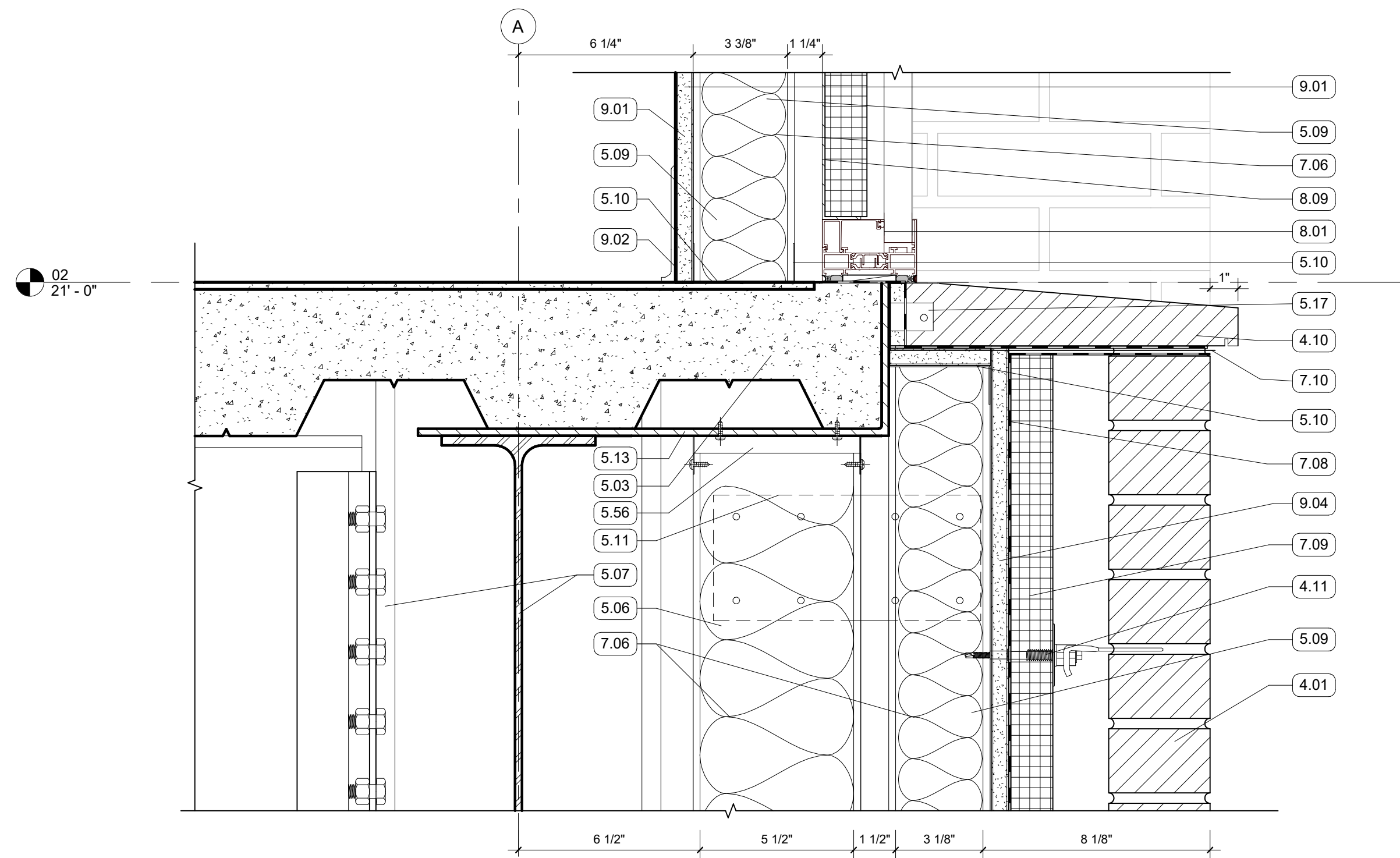
2 SECTION DETAIL - METAL SILL
3" = 1'-0" | RE:1/A350



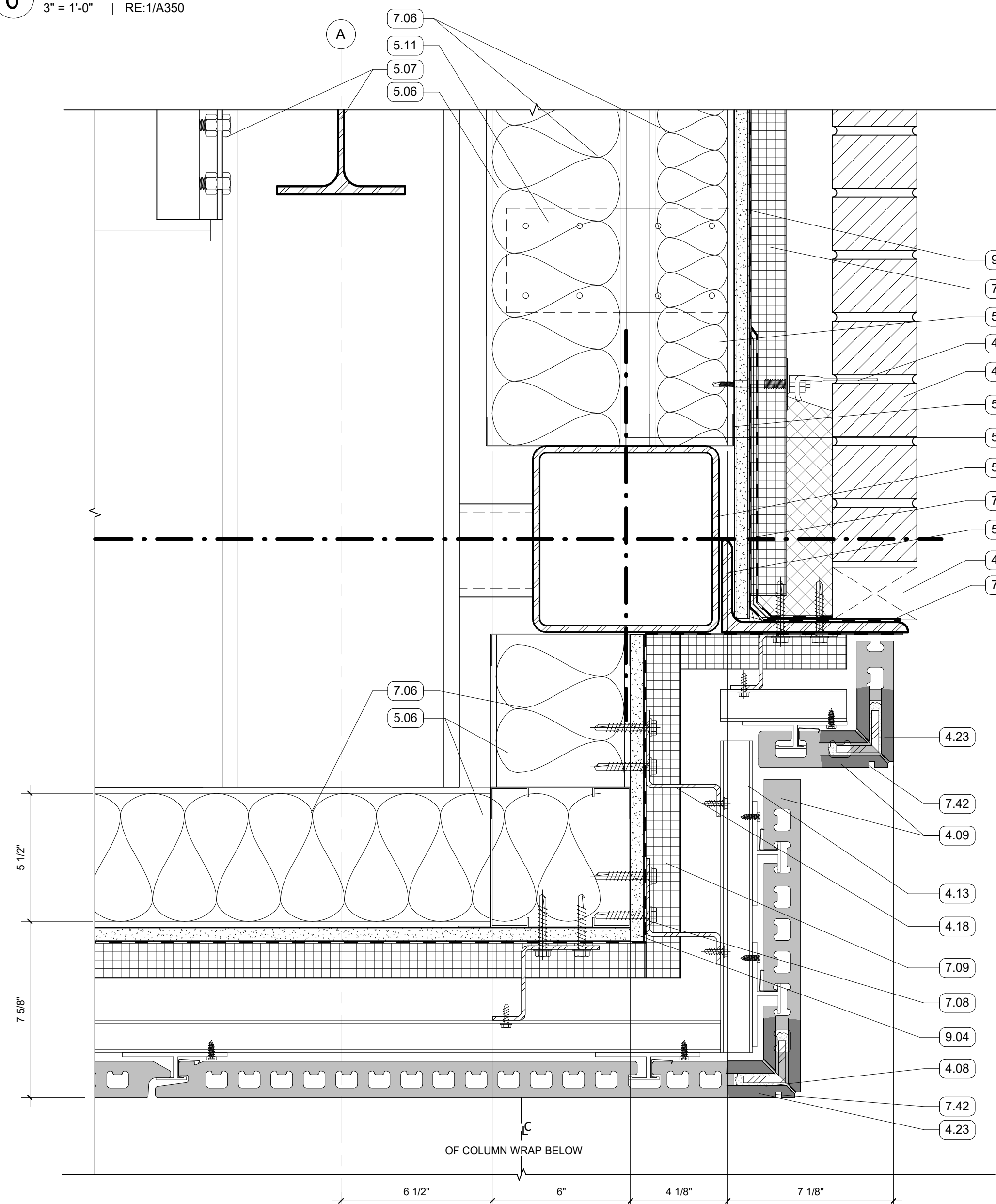
1 SECTION DETAIL - CAST STONE BASE
3" = 1'-0" | RE:1/A350



7 SECTION DETAIL
3" = 1'-0" | RE:1/A350



6 SECTION DETAIL
3" = 1'-0" | RE:1/A350



5 SECTION DETAIL - 2ND FLOOR TO SOFFIT
3" = 1'-0" | RE:1/A350