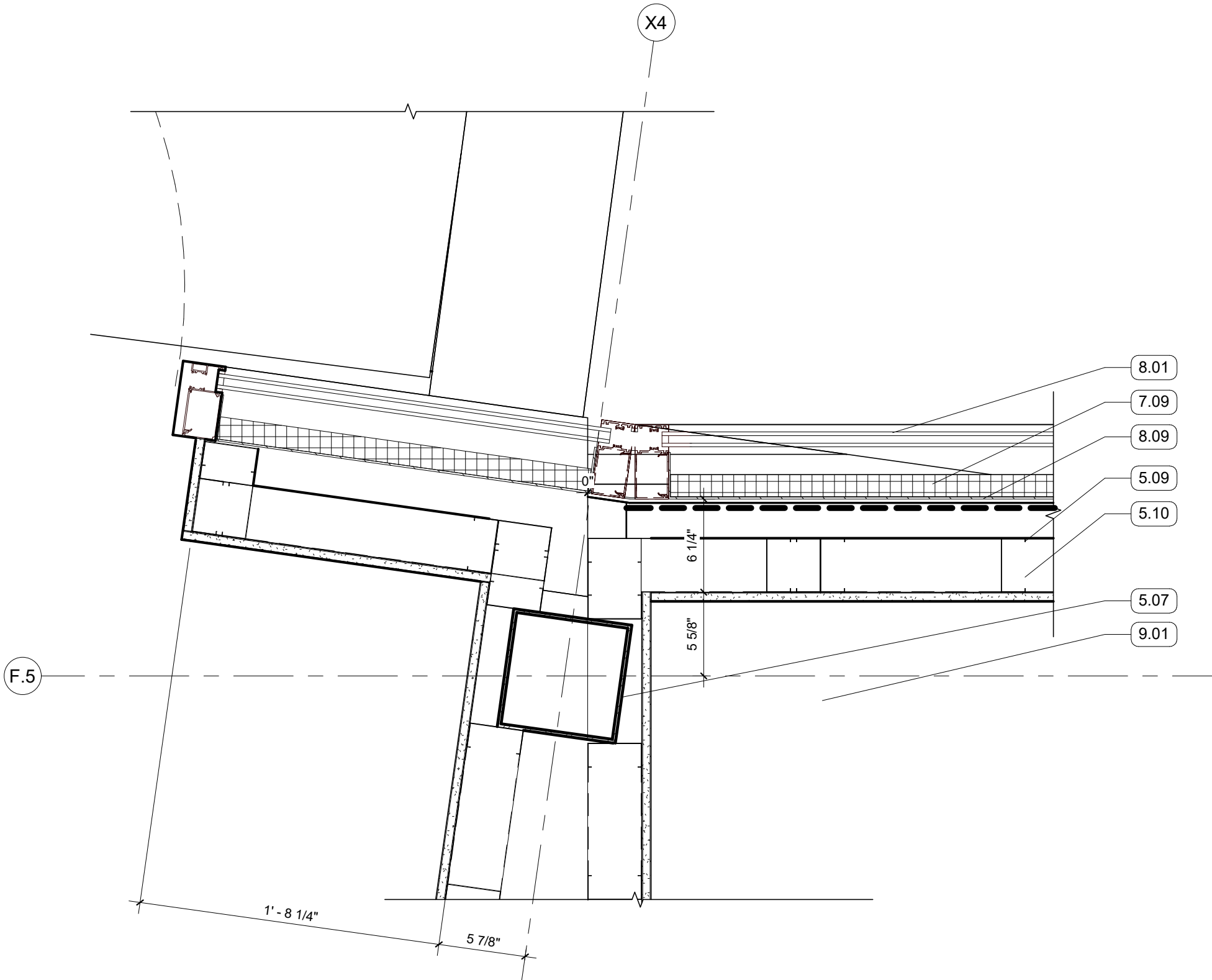
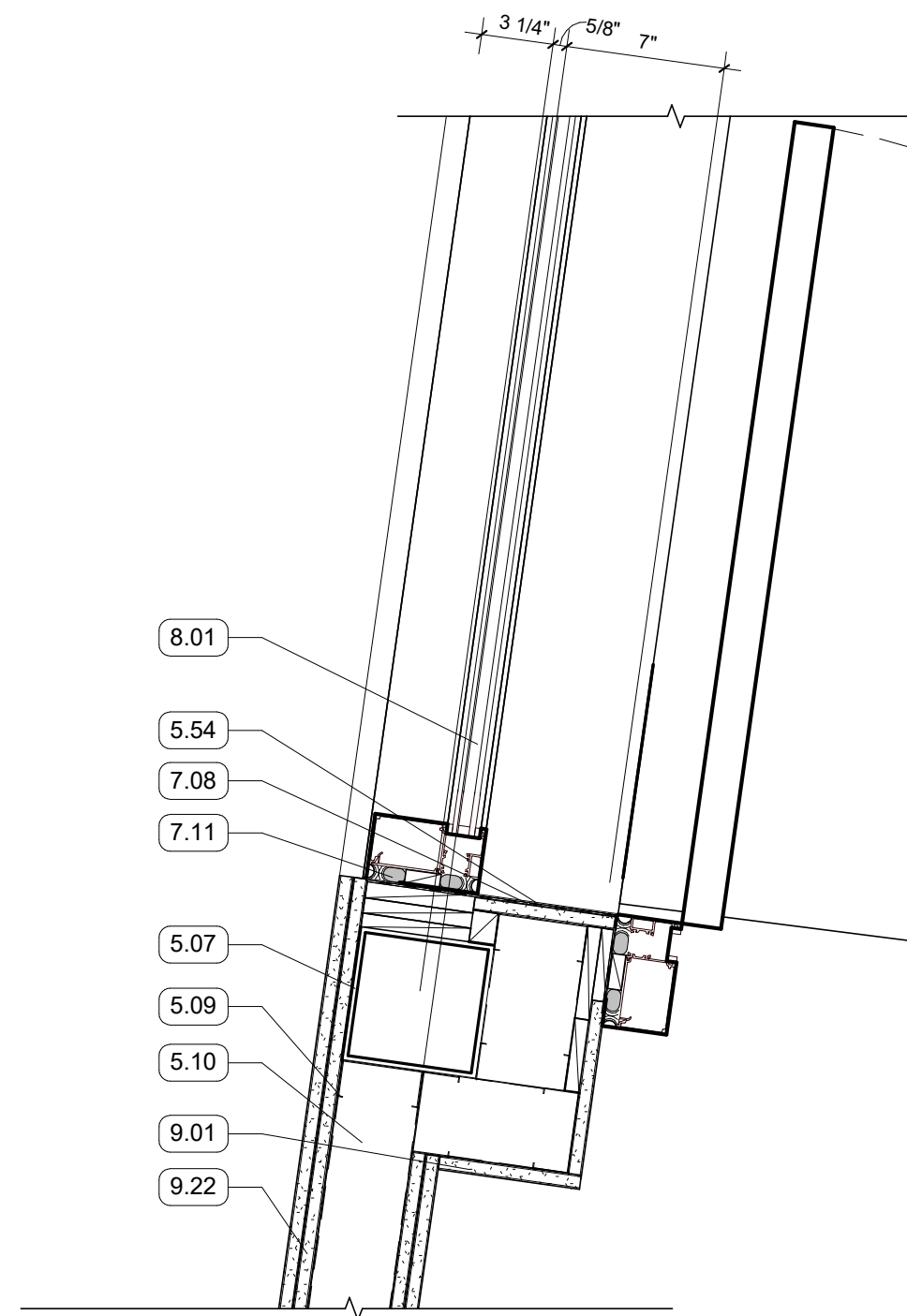


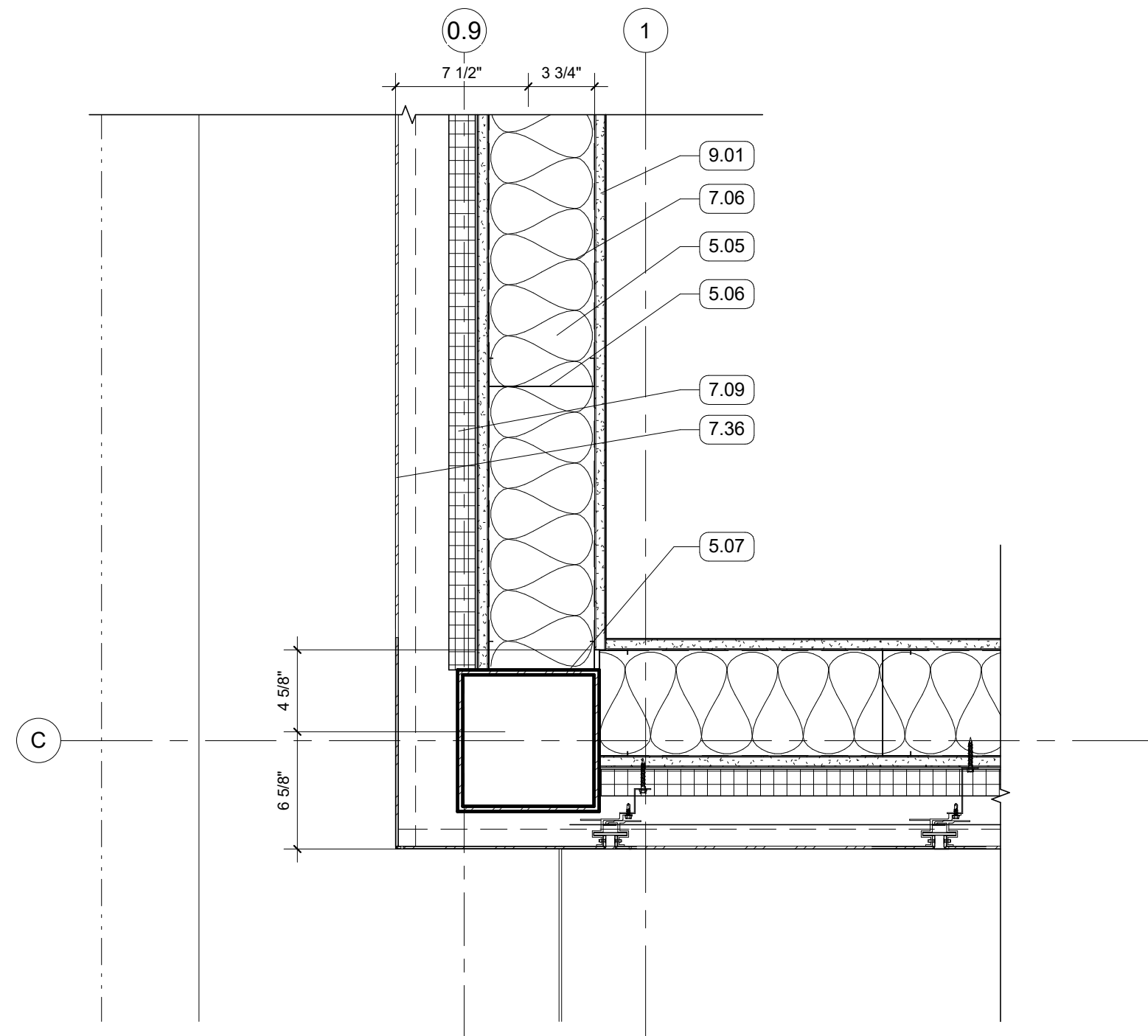
9 PLAN-LEVEL 04- NOTES - Callout 9
1 1/2" = 1'-0" RE:1/A104



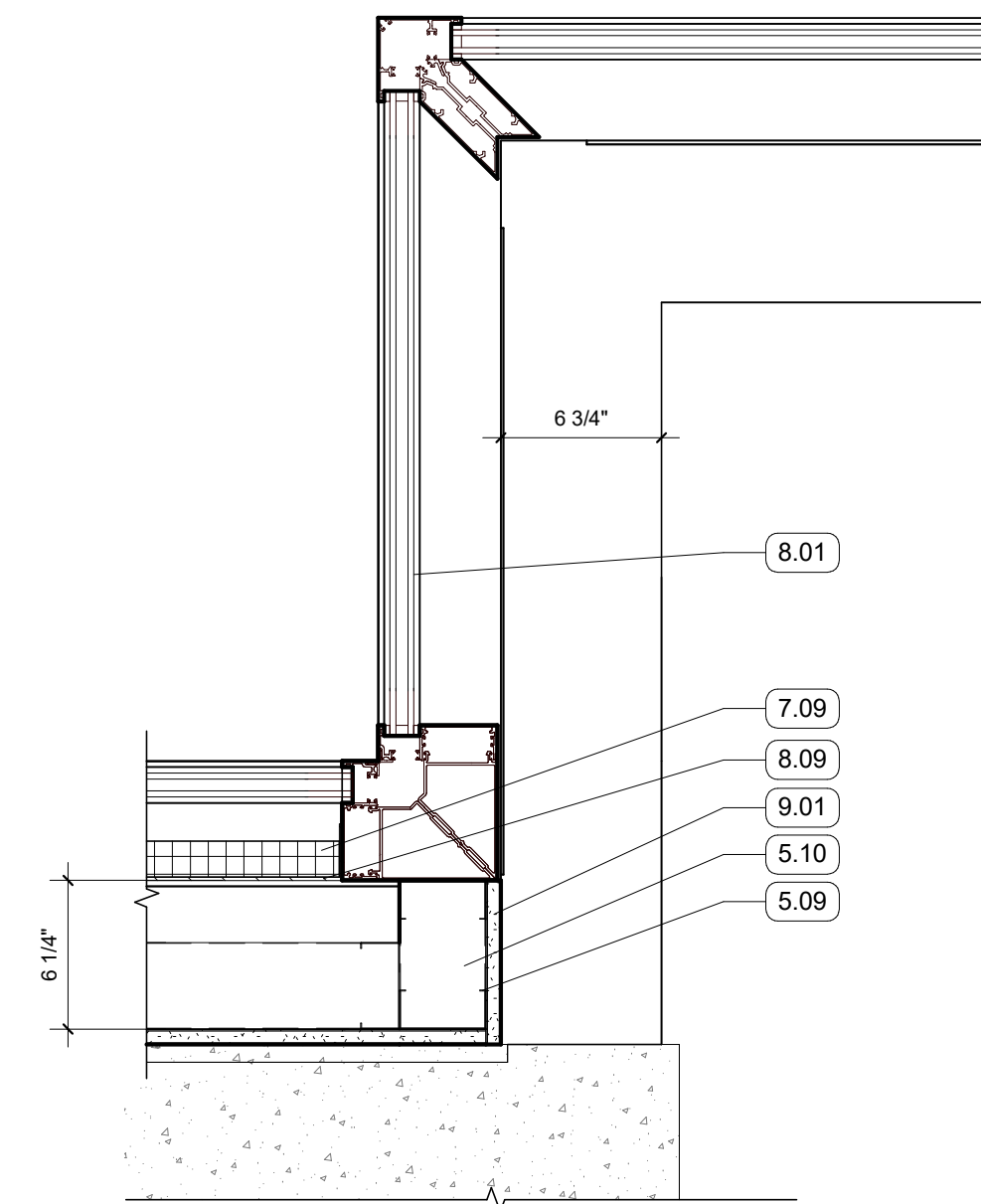
5 PLAN-LEVEL 04- NOTES - Callout 6
1 1/2" = 1'-0" RE:1/A104



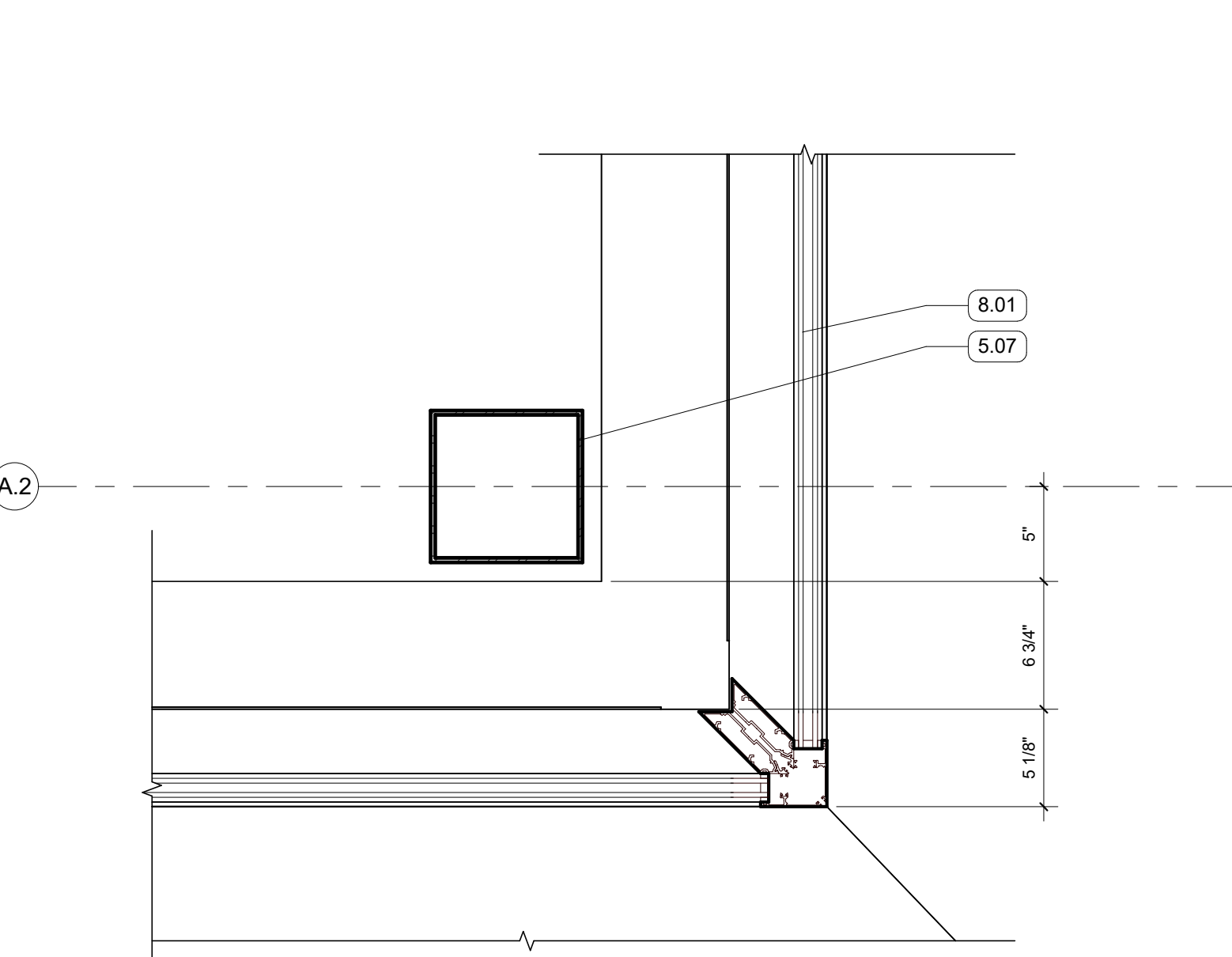
6 PLAN-LEVEL 04- NOTES - Callout 7
1 1/2" = 1'-0" RE:1/A104



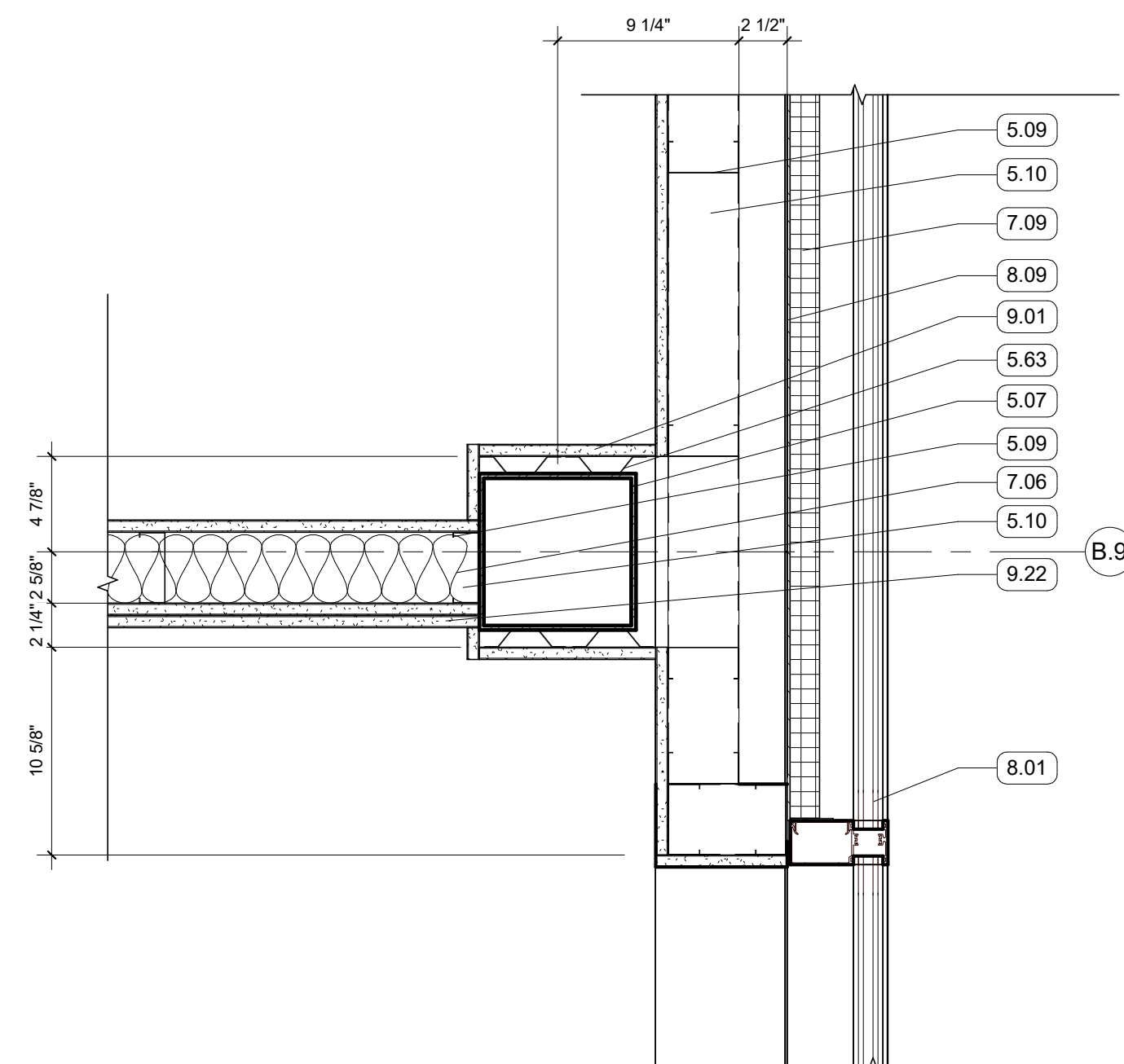
7 PLAN-LEVEL 04- NOTES - Callout 8
1 1/2" = 1'-0" RE:1/A104



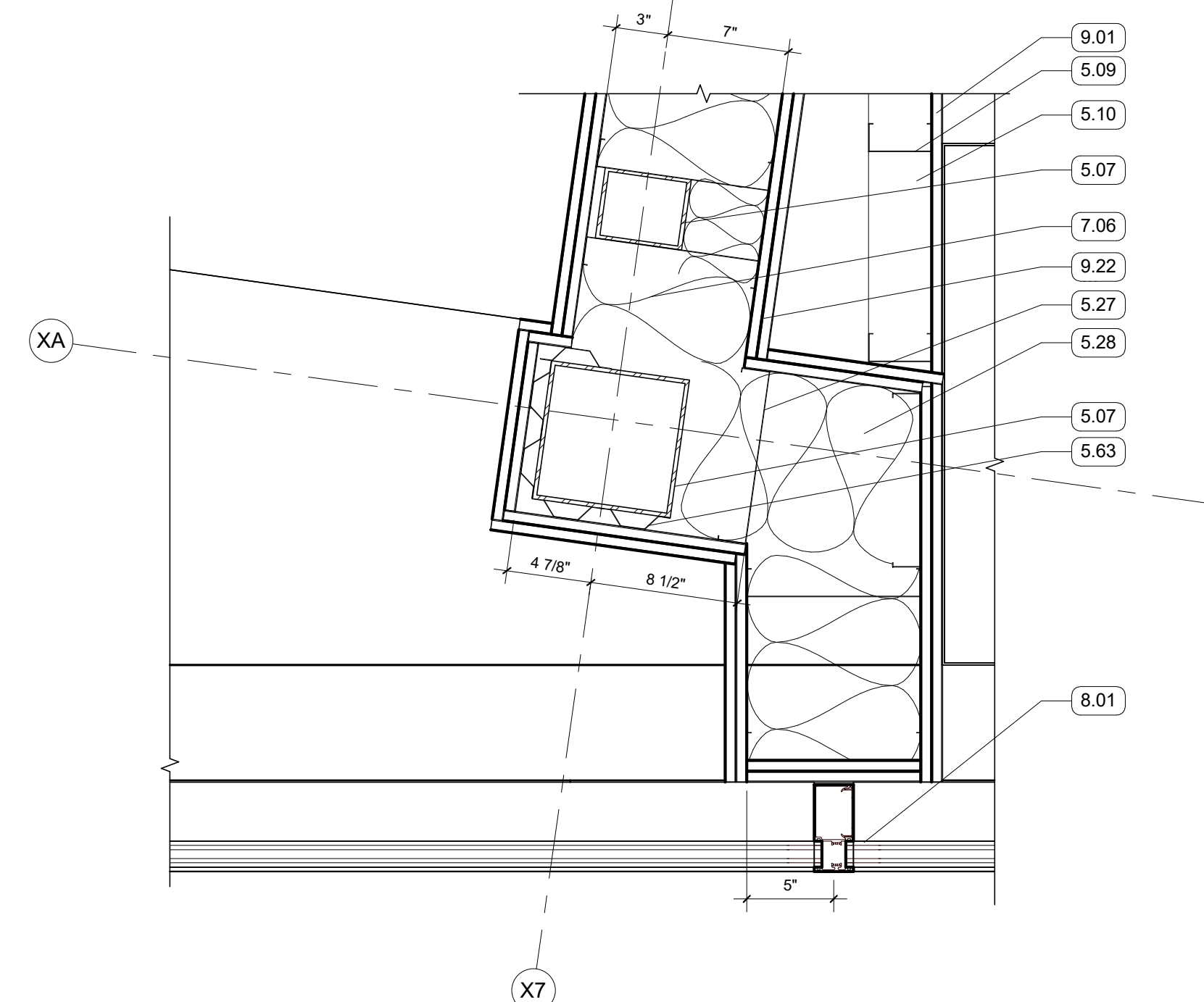
8 PLAN-LEVEL 04- NOTES - Callout 5
1 1/2" = 1'-0" RE:1/A104



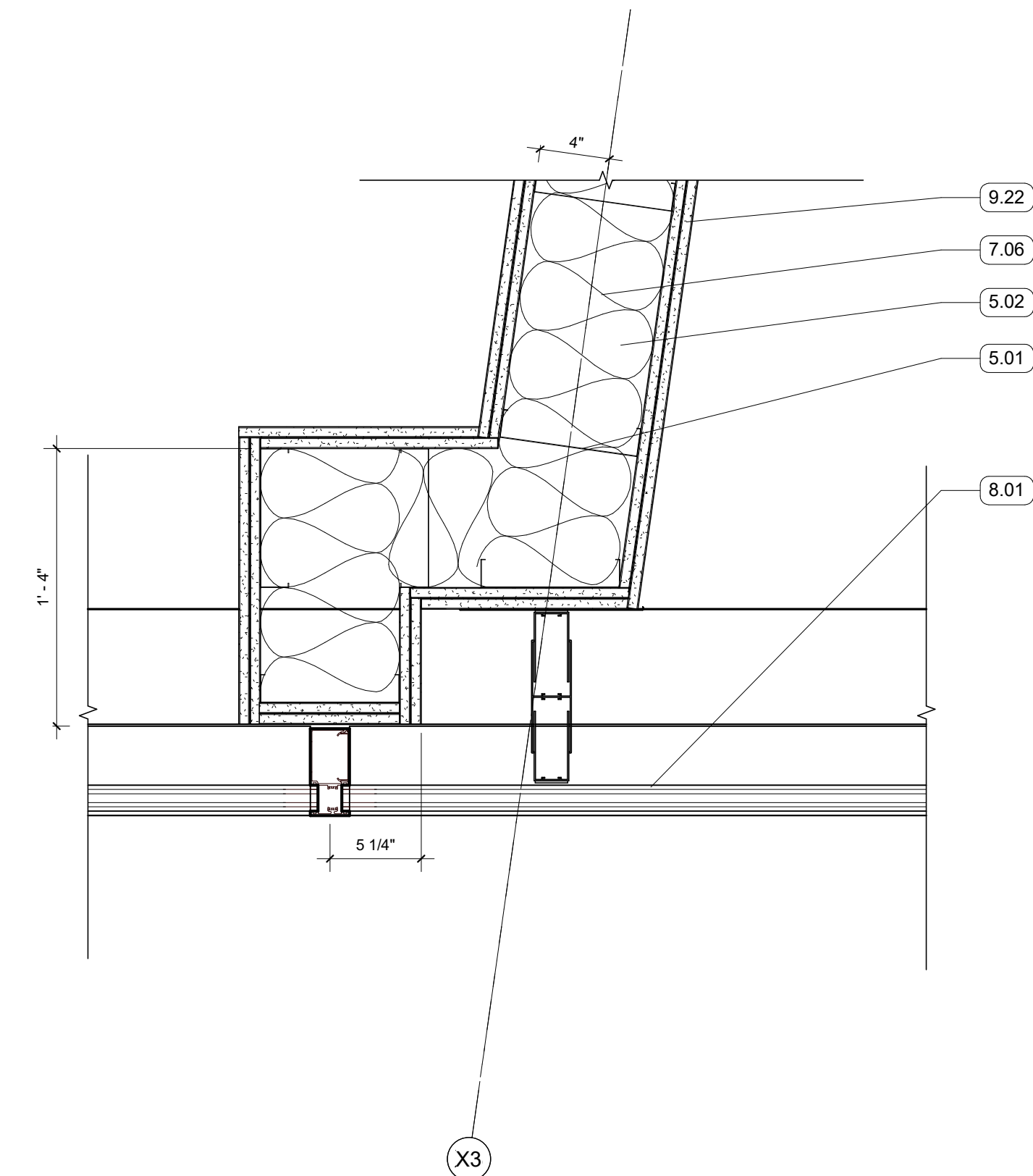
1 PLAN-LEVEL 04- NOTES - Callout 1
1 1/2" = 1'-0" RE:1/A104



2 PLAN-LEVEL 04- NOTES - Callout 2
1 1/2" = 1'-0" RE:1/A104



3 PLAN-LEVEL 04- NOTES - Callout 3
1 1/2" = 1'-0" RE:1/A104



4 PLAN-LEVEL 04- NOTES - Callout 4
1 1/2" = 1'-0" RE:1/A104

GENERAL NOTES

KEYNOTES

- 5.01 8" METAL STUD FRAMING
- 5.02 8" METAL STUD TRACK
- 5.05 6" METAL TRACK
- 5.06 6" METAL STUD FRAMING
- 5.07 STRUCTURAL STEEL FRAMING
- 5.09 3 5/8" METAL STUD FRAMING
- 5.10 3 5/8" METAL TRACK
- 5.27 10" METAL STUD - SEE STRUCTURAL
- 5.28 10" METAL TRACK
- 5.29 1 5/8" METAL STUD FRAMING - SEE STRUCTURAL
- 5.30 1 5/8" METAL TRACK
- 5.54 BRAKE METAL TRIM
- 5.63 7/8" HAT CHANNEL
- 7.06 BATT INSULATION, SIZED TO MATCH STUD DEPTH
- 7.08 AWB
- 7.09 MINERAL FIBER BOARD INSULATION
- 7.11 BACKER ROD AND SEALANT
- 7.36 MCM PANEL
- 8.01 ALUM STOREFRONT, CURTAINWALL, OR WINDOW SYSTEM, SEE OPENING SCHEDULE
- 8.09 BACK PANEL
- 9.01 5/8" GYPSUM BOARD, SEE FINISH PLAN FOR FINISH MATERIAL
- 9.22 (2) LAYERS 5/8" GYP BD

ASHE I BROUSSARD I WEINZETTLE
ARCHITECTS

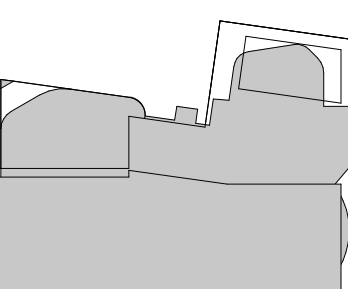
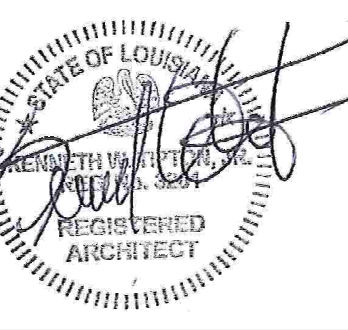
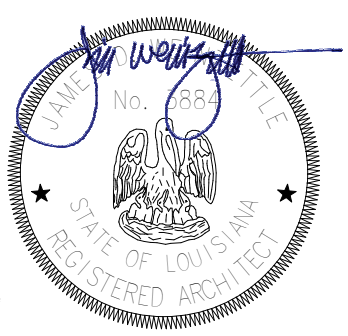
TIPTON
ASSOCIATES

CONSULTANTS
Monsieur & Associates, LLC
CABDO Landscape Architecture, LLC
Fox Nease Engineering, LLC
Sela O'Brien
Mechanical Engineering
Associated Design Group, Inc.
Electrical Engineering
Specialty Architects

ISSUE FOR BID
LOUISIANA STATE UNIVERSITY
ALEXANDRIA
DOWNTOWN HEALTH SERVICES CENTER
800 JACKSON ST.
ALEXANDRIA, LA 71301

PROJECT # 19-602-23-01
ARCH PROJECT # 2023.20 / 1031.00-23
SITE ID: NEW SITE CODE: 6-40-023
DATE OCTOBER 10, 2023
Ashe Broussard Weinzeite Architects, LLP
Tipton Associates APAC, A Joint Venture
301 Jackson Street, Suite 205
Alexandria, LA 71301

NO.	REVISION	DATE



EXTERIOR PLAN
DETAILS

A504