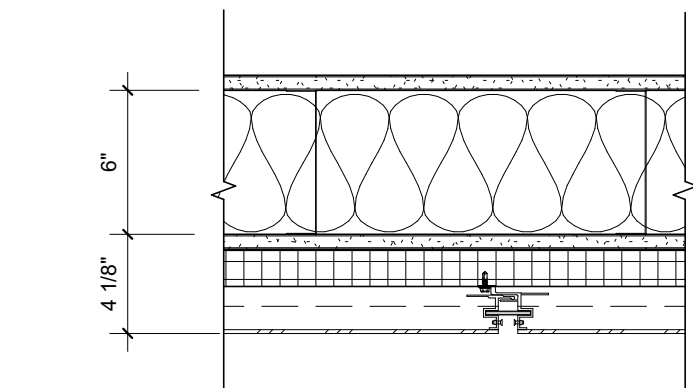
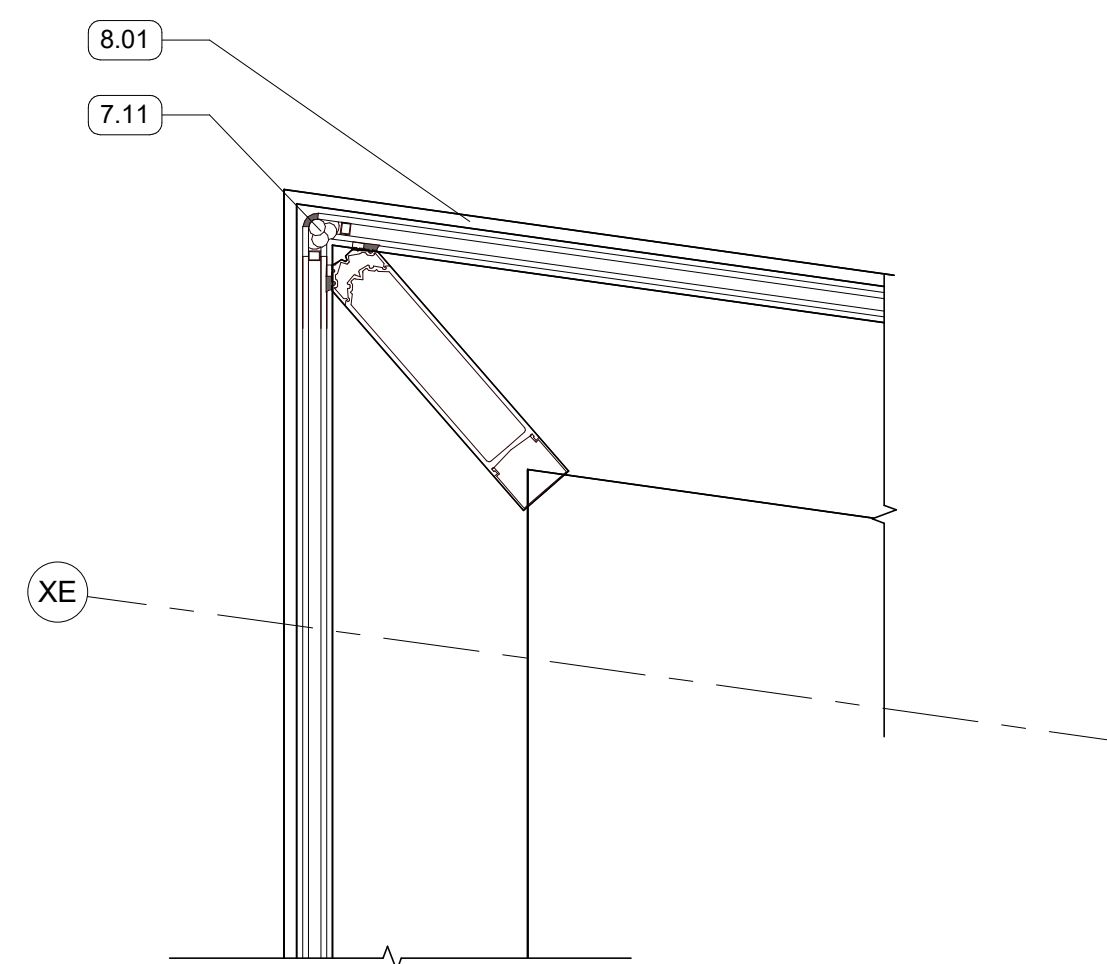


1 PLAN DETAIL - MASONRY - TYPICAL BRICK INFILL "BAY"
1 1/2" = 1'-0" RE: 1/A102



2 TYPICAL MCM PANEL VERTICAL JOINT
1 1/2" = 1'-0"



3 PLAN DETAIL - WINDOW SYSTEM CORNER
1 1/2" = 1'-0" RE: 1/A103

GENERAL NOTES

KEYNOTES

- 4.01 FACE BRICK VENEER, RUNNING BOND
- 4.11 MASONRY ANCHORS
- 5.05 6" METAL TRACK
- 5.06 6" METAL STUD FRAMING
- 5.07 STRUCTURAL STEEL FRAMING
- 5.09 3 5/8" METAL STUD FRAMING
- 5.10 3 5/8" METAL TRACK
- 5.15 2 1/2" METAL STUD FRAMING
- 5.18 2 1/2" METAL TRACK
- 5.29 1 5/8" METAL STUD FRAMING - SEE STRUCTURAL
- 5.30 1 5/8" METAL TRACK
- 7.06 BATT INSULATION, SIZED TO MATCH STUD DEPTH
- 7.08 AFB
- 7.09 MINERAL FIBER BOARD INSULATION
- 7.11 BACKER ROD AND SEALANT
- 8.01 ALUM STOREFRONT, CURTAINWALL, OR WINDOW SYSTEM. SEE OPENING SCHEDULE
- 9.01 5/8" GYPSUM BOARD, SEE FINISH PLAN FOR FINISH MATERIAL
- 9.04 5/8" EXTERIOR SHEATHING

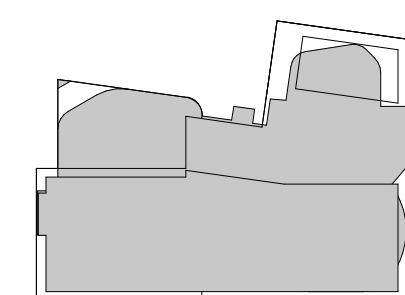
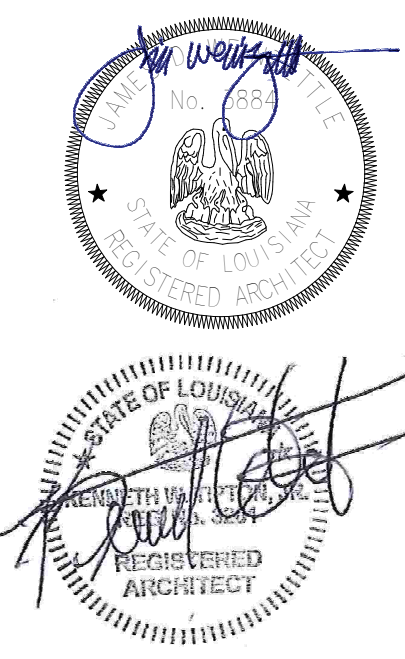
ASHE I BROUSSARD I WEINZETTLE
ARCHITECTS

CONSULTANTS
Monsieur & Associates, LLC
CABO Landscape Architecture, LLC
Fox Nease Engineering, LLC
S&S O'Brien
Mechanical Engineering
Associated Design Group, Inc.
Electrical Engineering
Specialty Architects

ISSUE FOR BID
LOUISIANA STATE UNIVERSITY
ALEXANDRIA
DOWNTOWN HEALTH SERVICES CENTER
800 JACKSON ST.
ALEXANDRIA, LA 71301

PROJECT # 19-602-23-01
ARCH PROJECT # 2023.20 / 1031.00-23
SITE ID: NEW SITE CODE: 4-40-023
DATE OCTOBER 10, 2023
Ashe Broussard Weinzettte Architects, LLP
Tipton Associates APAC, A Joint Venture
301 Jackson Street, Suite 205
Alexandria, LA 71301

NO.	REVISION	DATE



EXTERIOR PLAN
DETAILS

A503