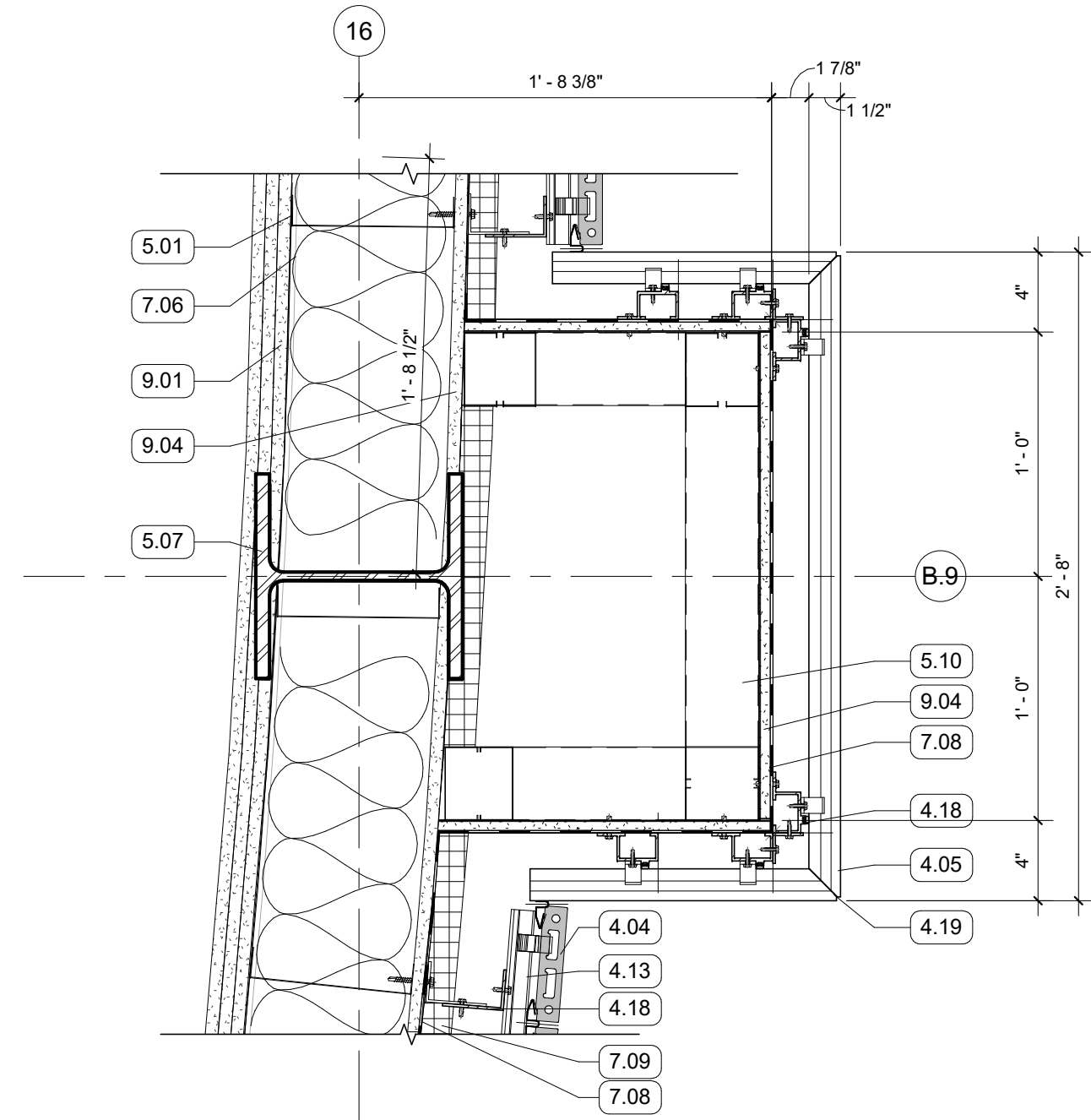
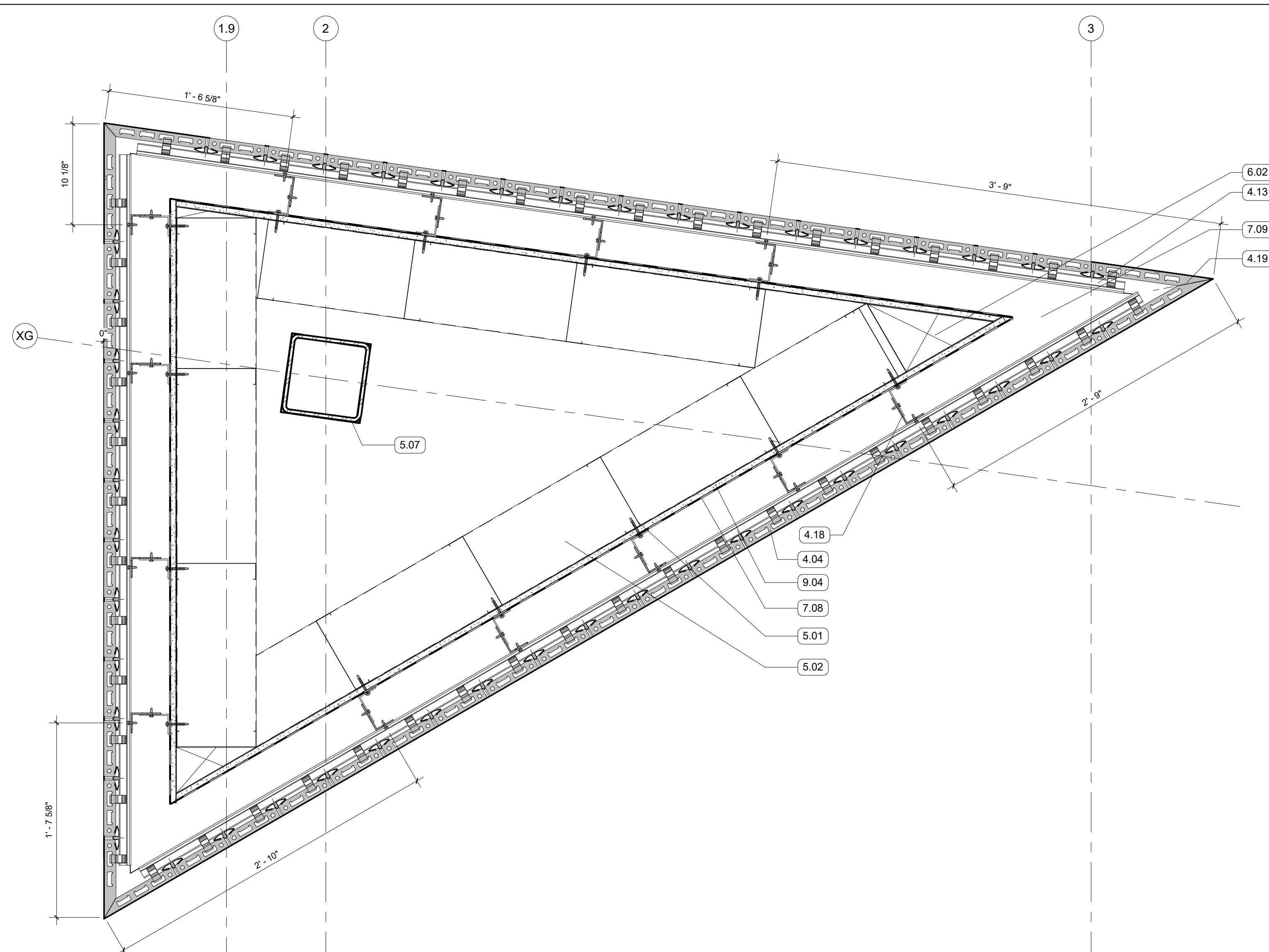


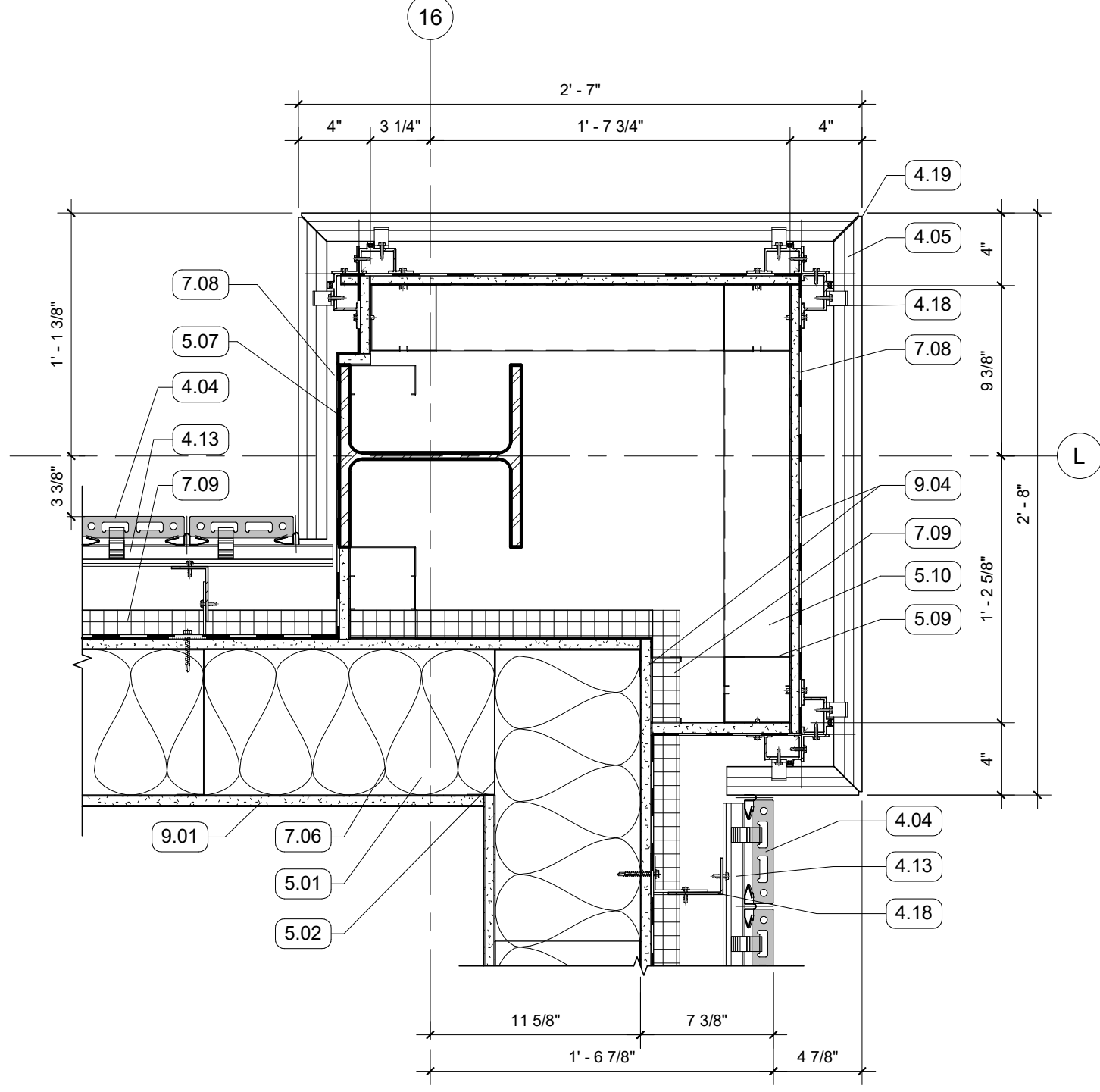
9 PLAN DETAIL - COLUMN WRAP J
1 1/2" = 1'-0" RE:1/A101



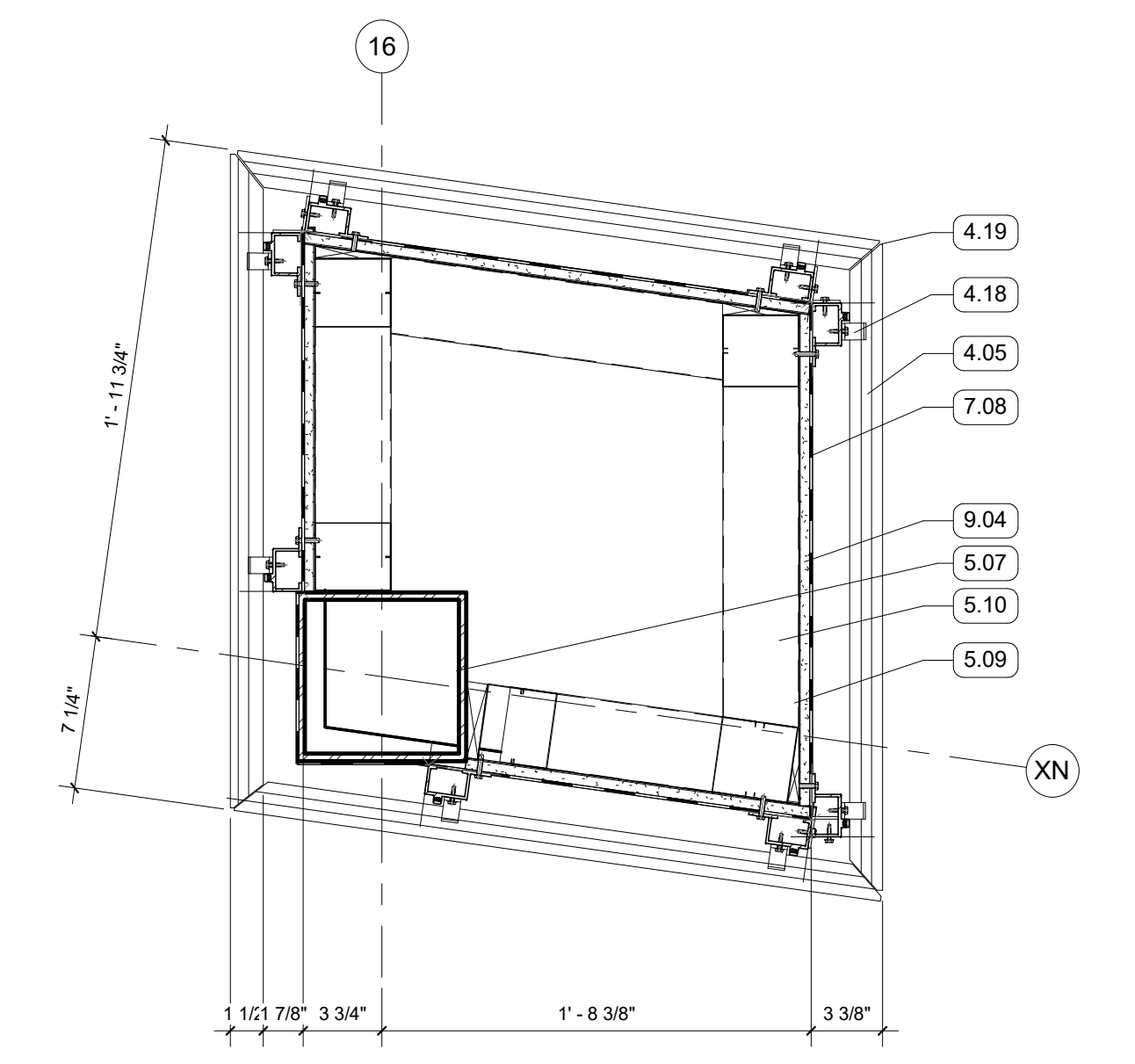
10 PLAN DETAIL - COLUMN WRAP D
1 1/2" = 1'-0" RE:1/A101



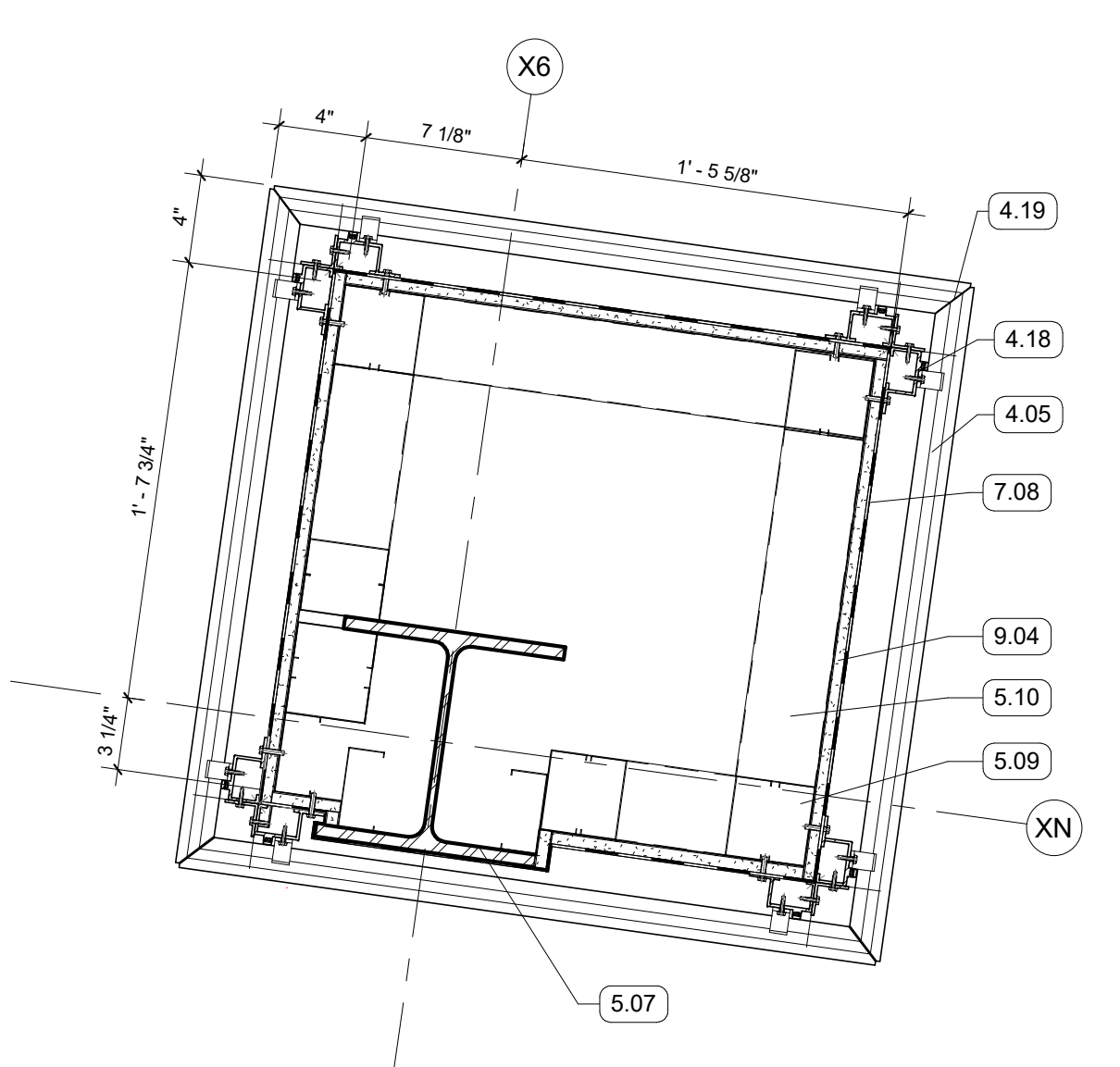
11 PLAN DETAIL - COLUMN WRAP K
1 1/2" = 1'-0" RE:1/A101



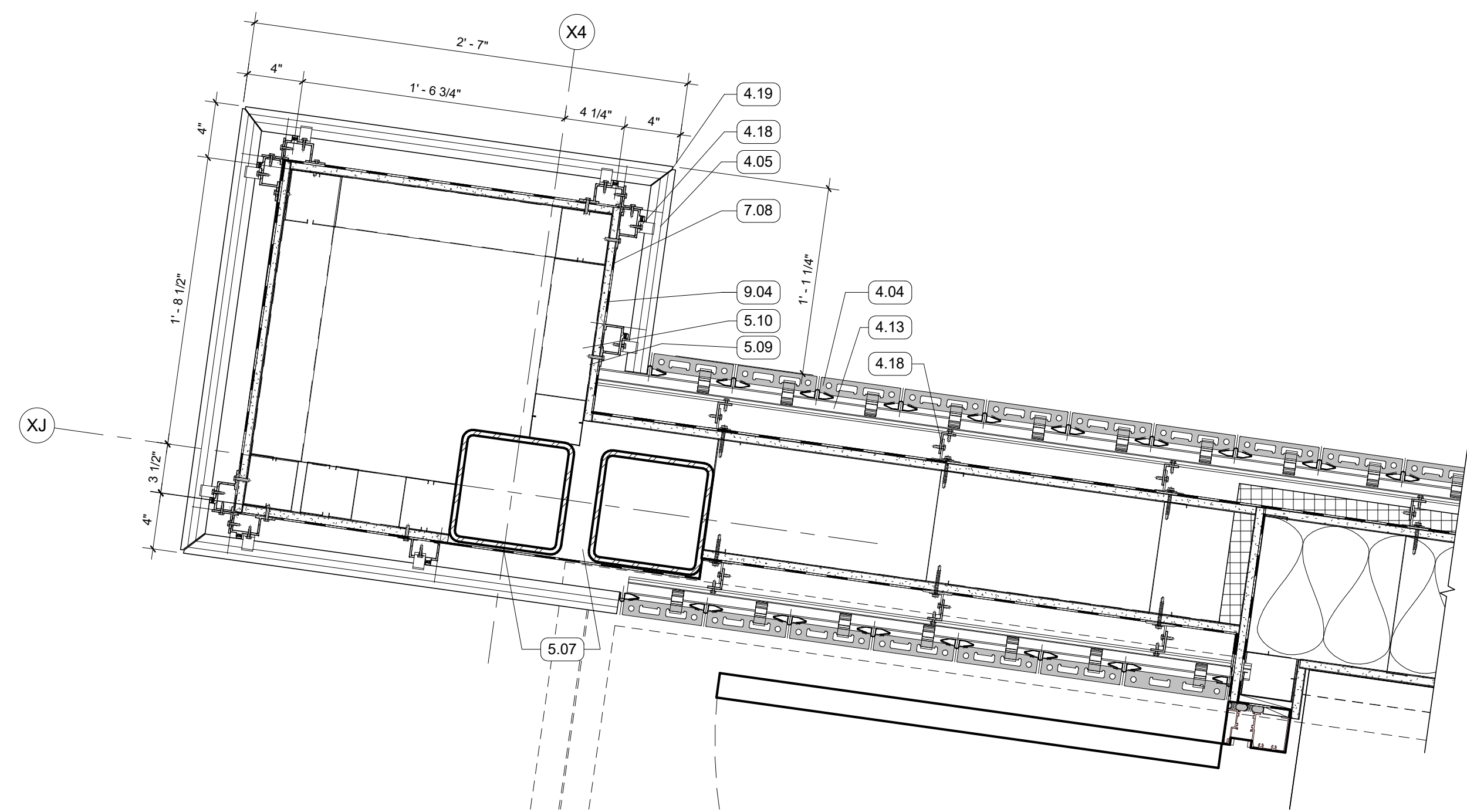
5 PLAN DETAIL - COLUMN WRAP E
1 1/2" = 1'-0" RE:1/A101



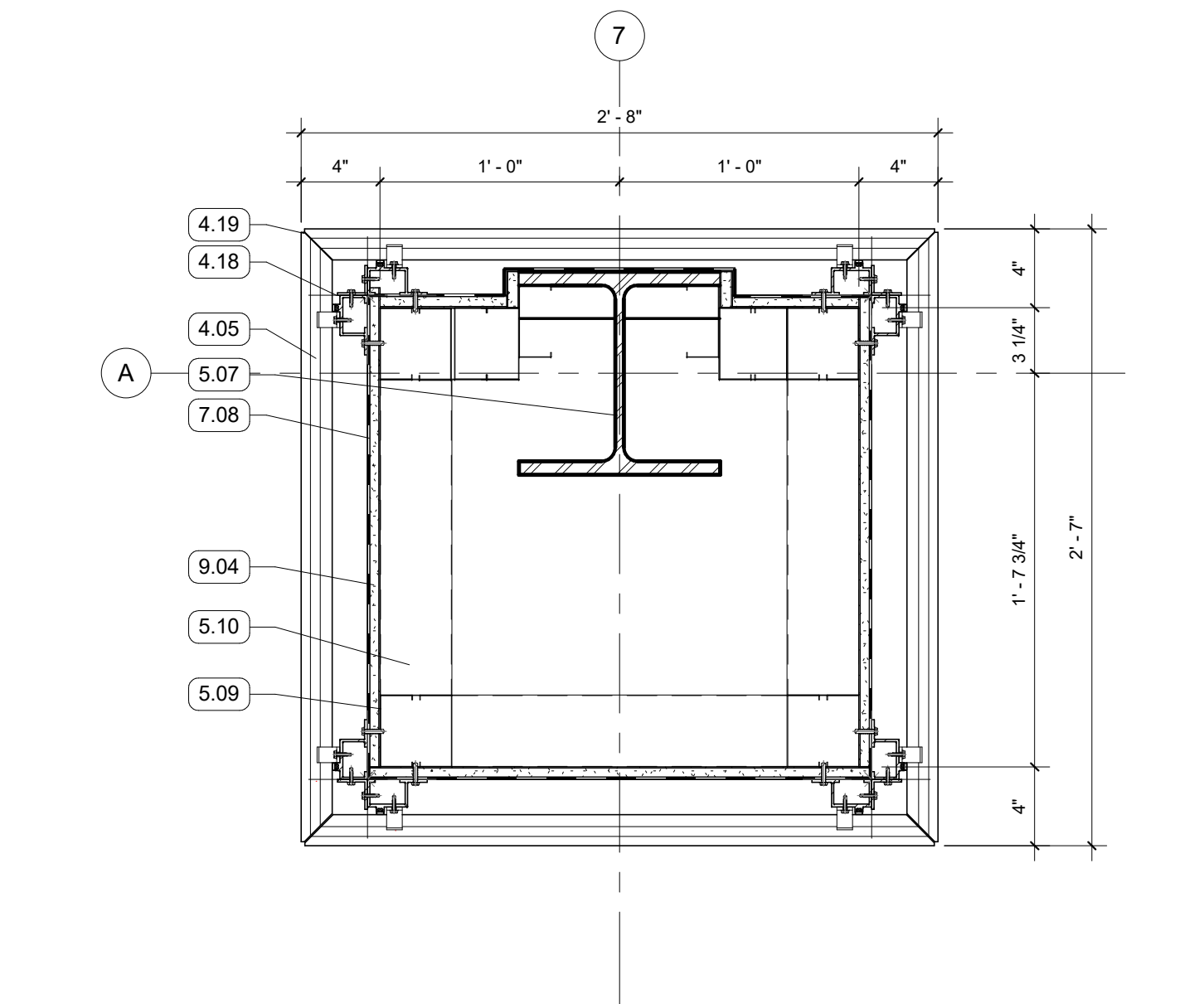
6 PLAN DETAIL - COLUMN WRAP F
1 1/2" = 1'-0" RE:1/A101



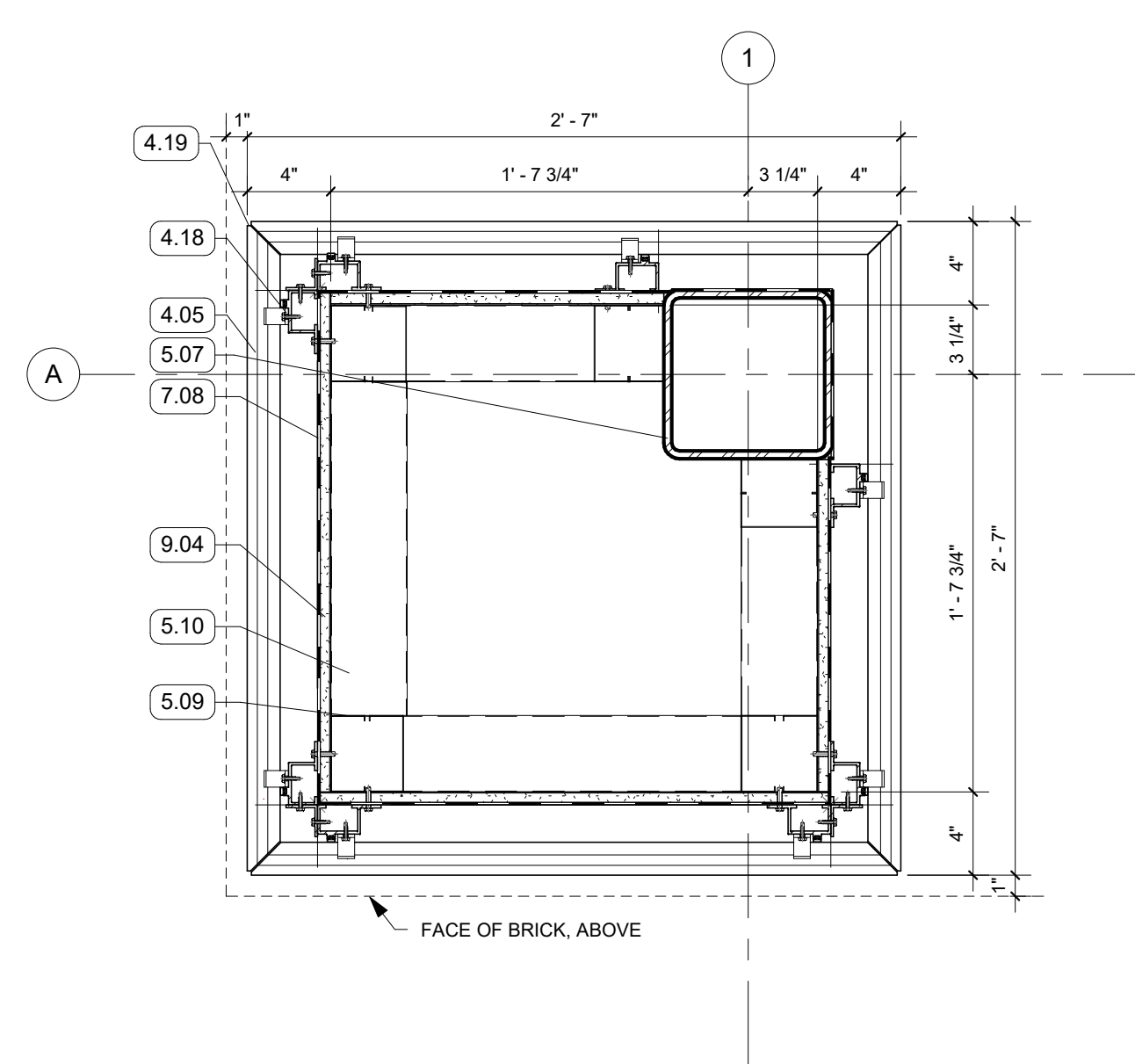
7 PLAN DETAIL - COLUMN WRAP G
1 1/2" = 1'-0" RE:1/A101



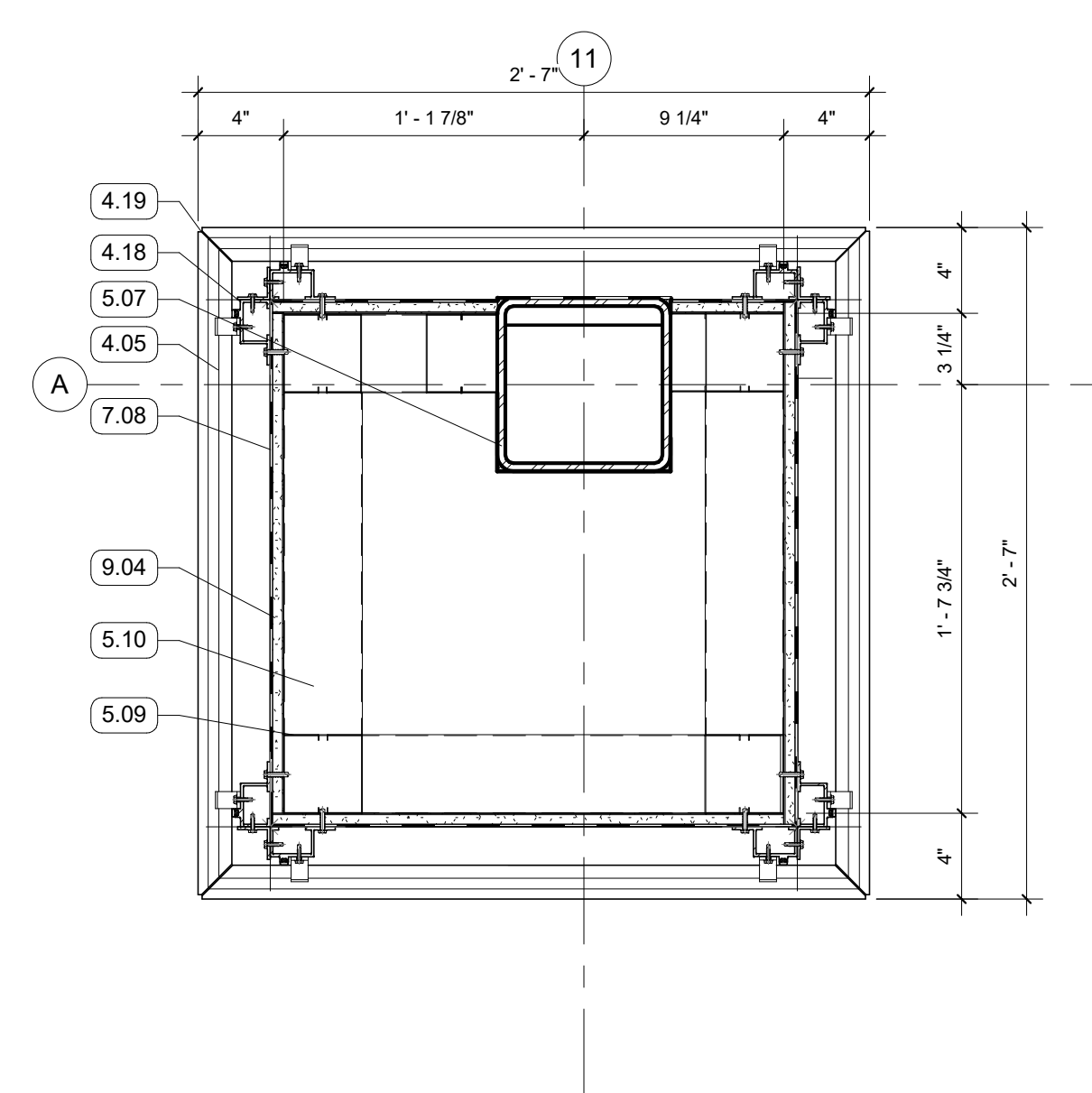
8 PLAN DETAIL - COLUMN WRAP I
1 1/2" = 1'-0" RE:1/A101



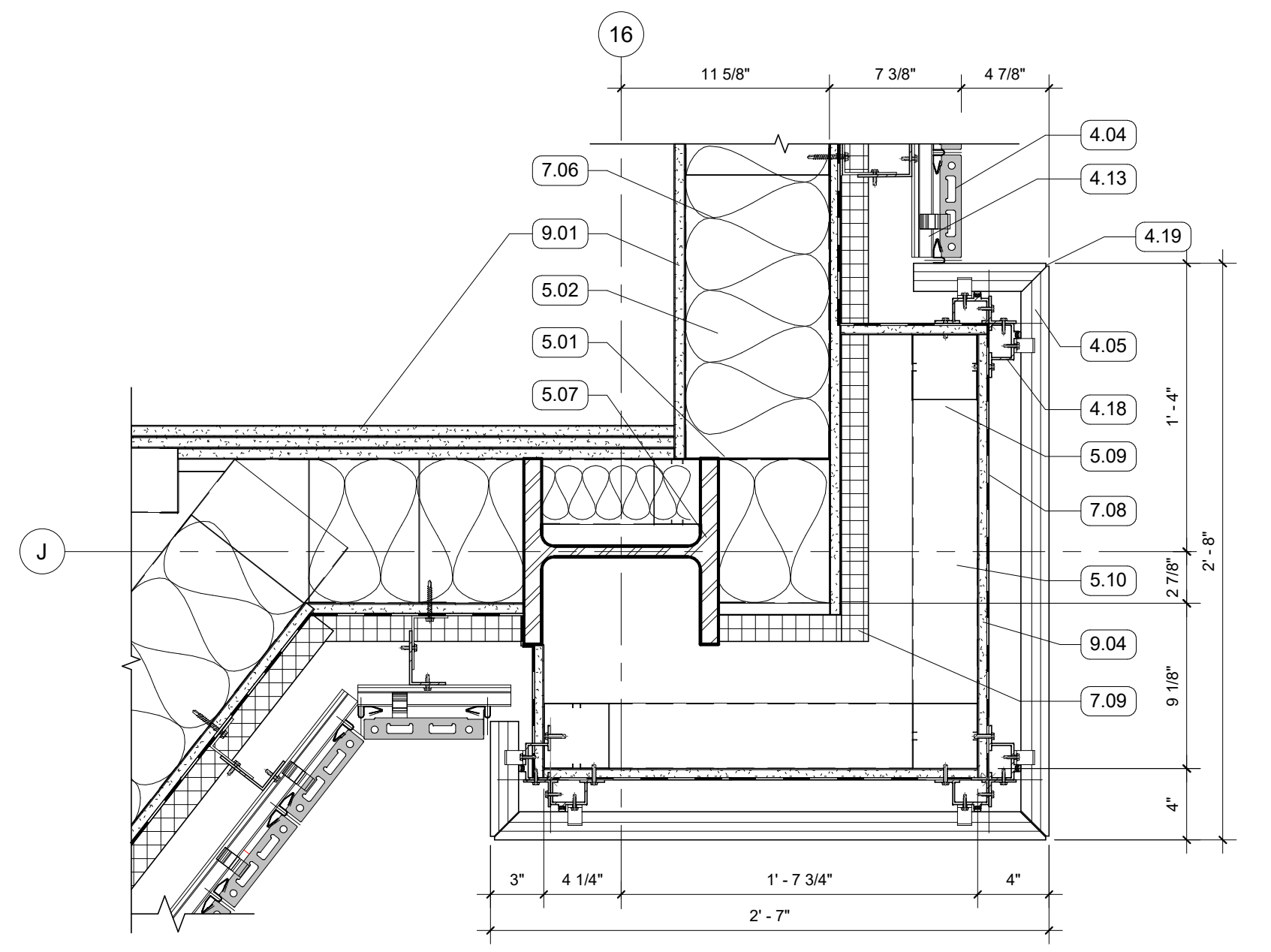
1 PLAN DETAIL - COLUMN WRAP A
1 1/2" = 1'-0" RE:1/A101



2 PLAN DETAIL - COLUMN WRAP B
1 1/2" = 1'-0" RE:1/A101



3 PLAN DETAIL - COLUMN WRAP C
1 1/2" = 1'-0" RE:1/A101



4 PLAN DETAIL - COLUMN WRAP D
1 1/2" = 1'-0" RE:1/A101

GENERAL NOTES

KEYNOTES

- 4.04 TERRA COTTA RAINSCREEN - STACK BOND, UNIT SIZE #1
- 4.05 TERRA COTTA RAINSCREEN - COLUMN WRAP, UNIT SIZE #2
- 4.13 NON-CONTINUOUS ALUMINUM SUBSTRUCTURE
- 4.18 CONTINUOUS ALUMINUM SUBSTRUCTURE
- 4.19 MITERED PANEL CONNECTION
- 5.01 6" METAL STUD FRAMING
- 5.02 8" METAL STUD TRACK
- 5.07 STRUCTURAL STEEL FRAMING
- 5.09 3 5/8" METAL STUD FRAMING
- 5.10 3 5/8" METAL TRACK
- 6.02 WOOD BLOCKING
- 7.06 BATT INSULATION, SIZED TO MATCH STUD DEPTH
- 7.08 AWB
- 7.09 MINERAL FIBER BOARD INSULATION
- 7.11 BACKER ROD AND SEALANT
- 8.01 ALUM STOREFRONT, CURTAINWALL, OR WINDOW SYSTEM. SEE OPENING SCHEDULE
- 9.01 5/8" GYPSUM BOARD, SEE FINISH PLAN FOR FINISH MATERIAL
- 9.04 5/8" EXTERIOR SHEATHING