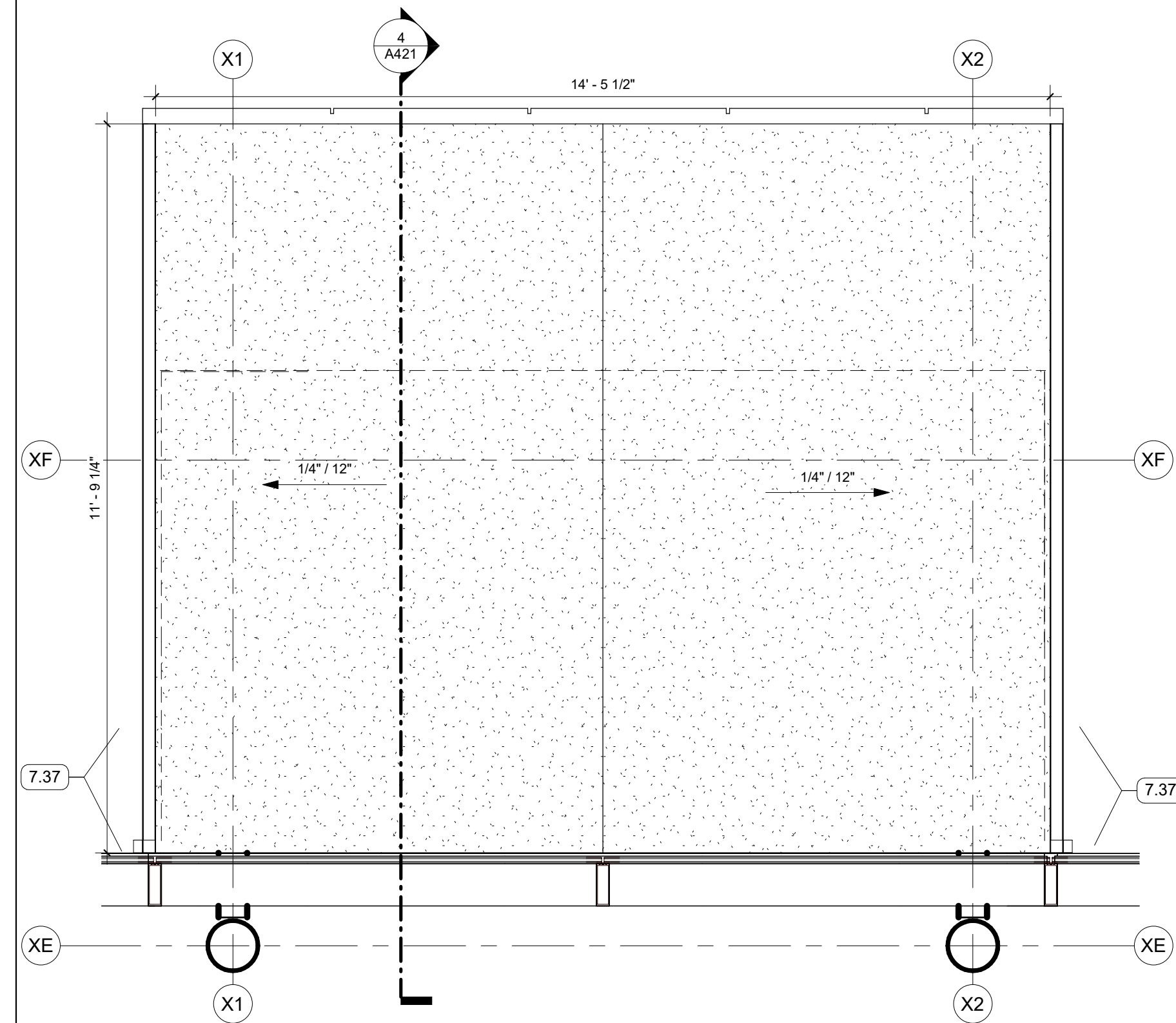
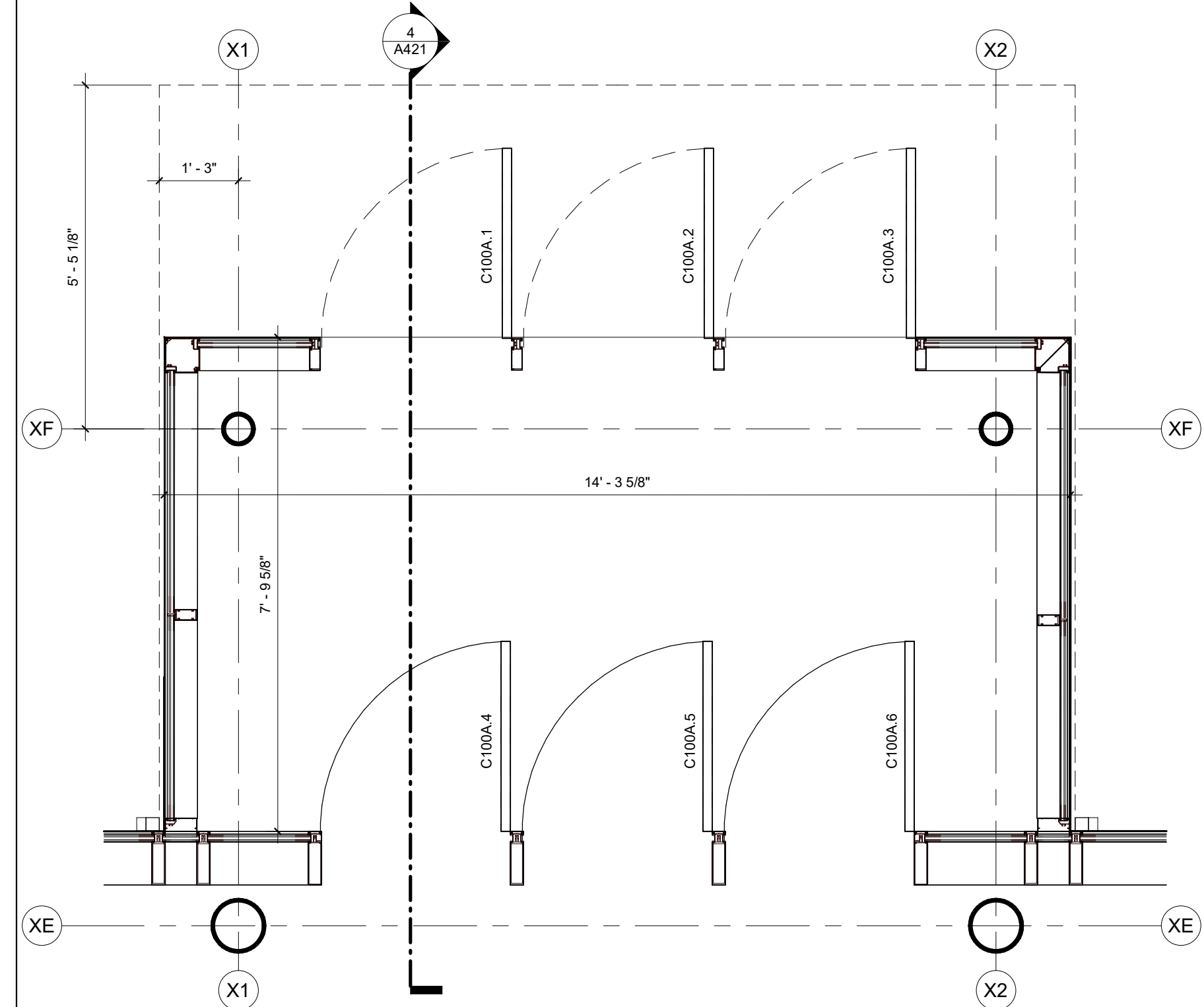


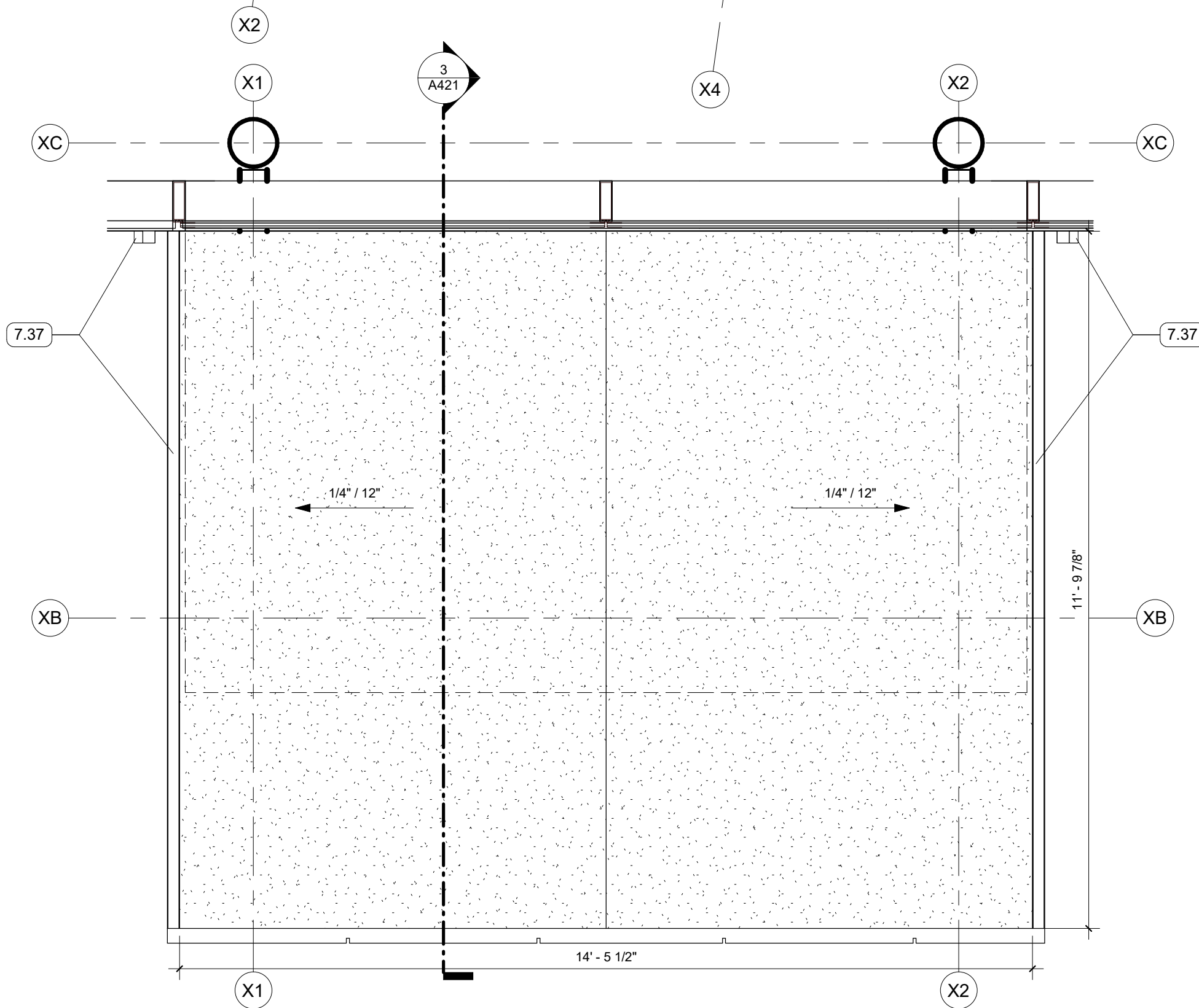
5 ALTERNATE NO. 3 - ENLARGED PLAN - ALUMINUM CANOPY
1/2" = 1'-0" | RE:1/A101



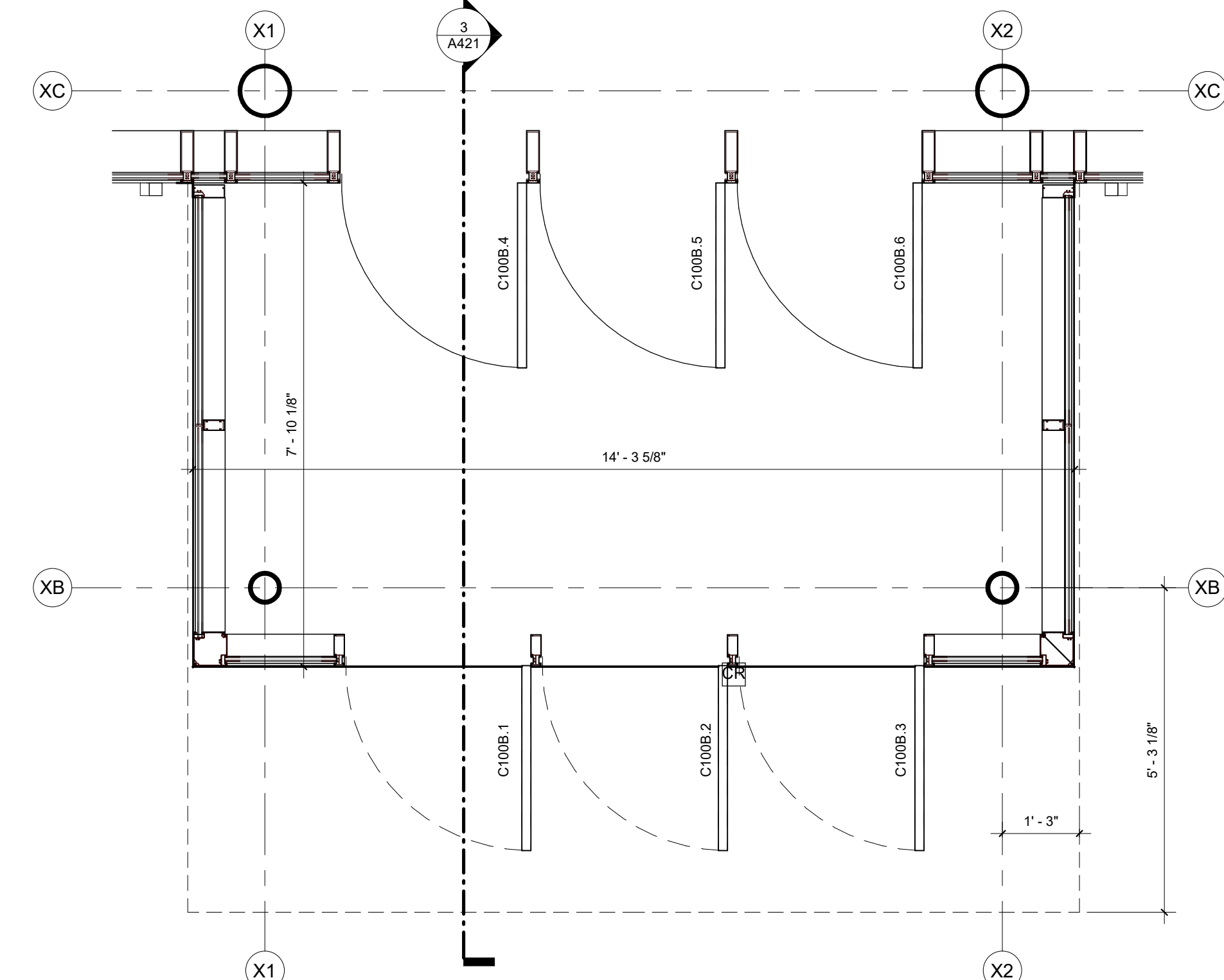
8 VESTIBULE NORTH - ROOF
1/2" = 1'-0"



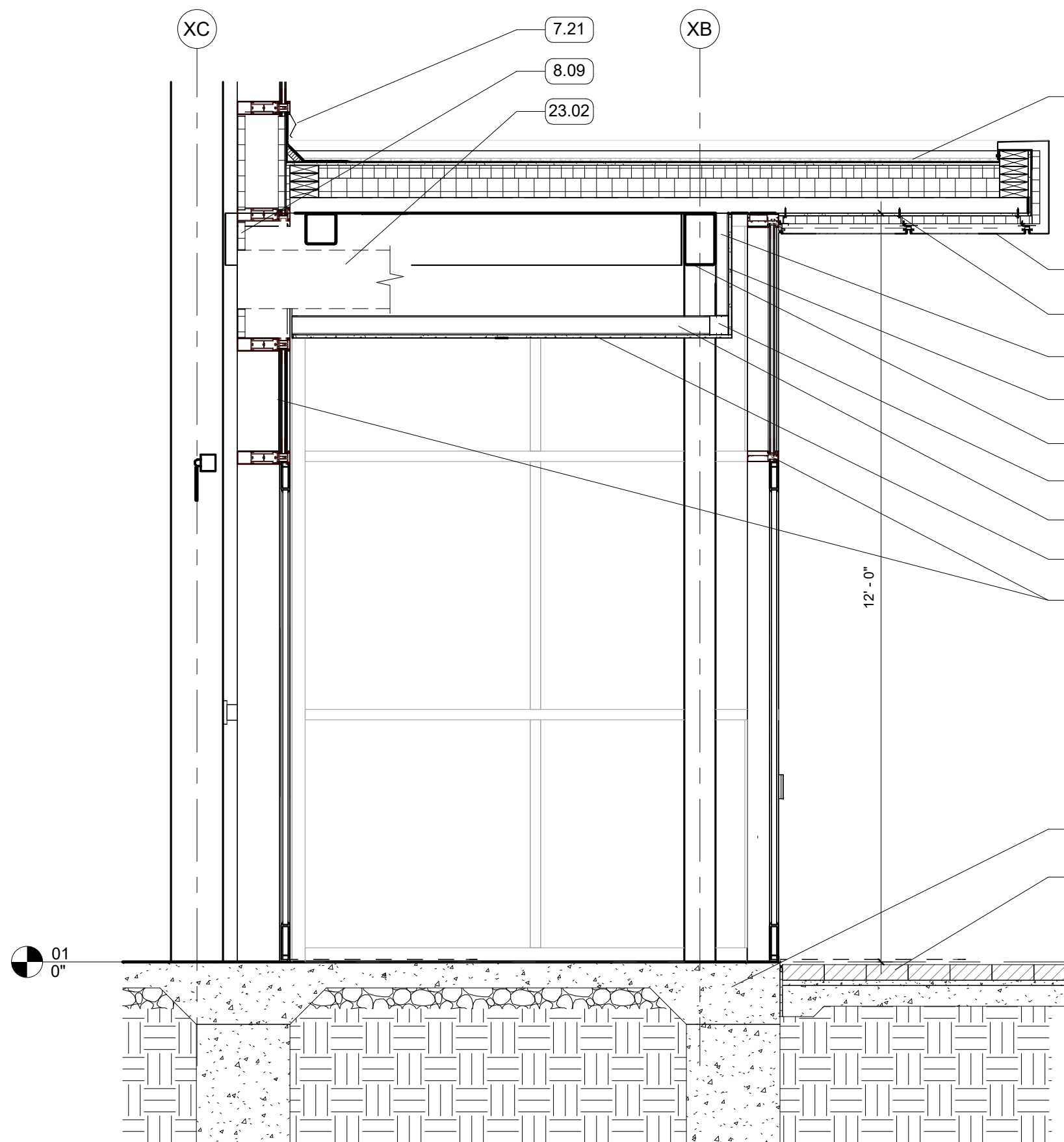
1 VESTIBULE NORTH
1/2" = 1'-0" | RE:1/A101



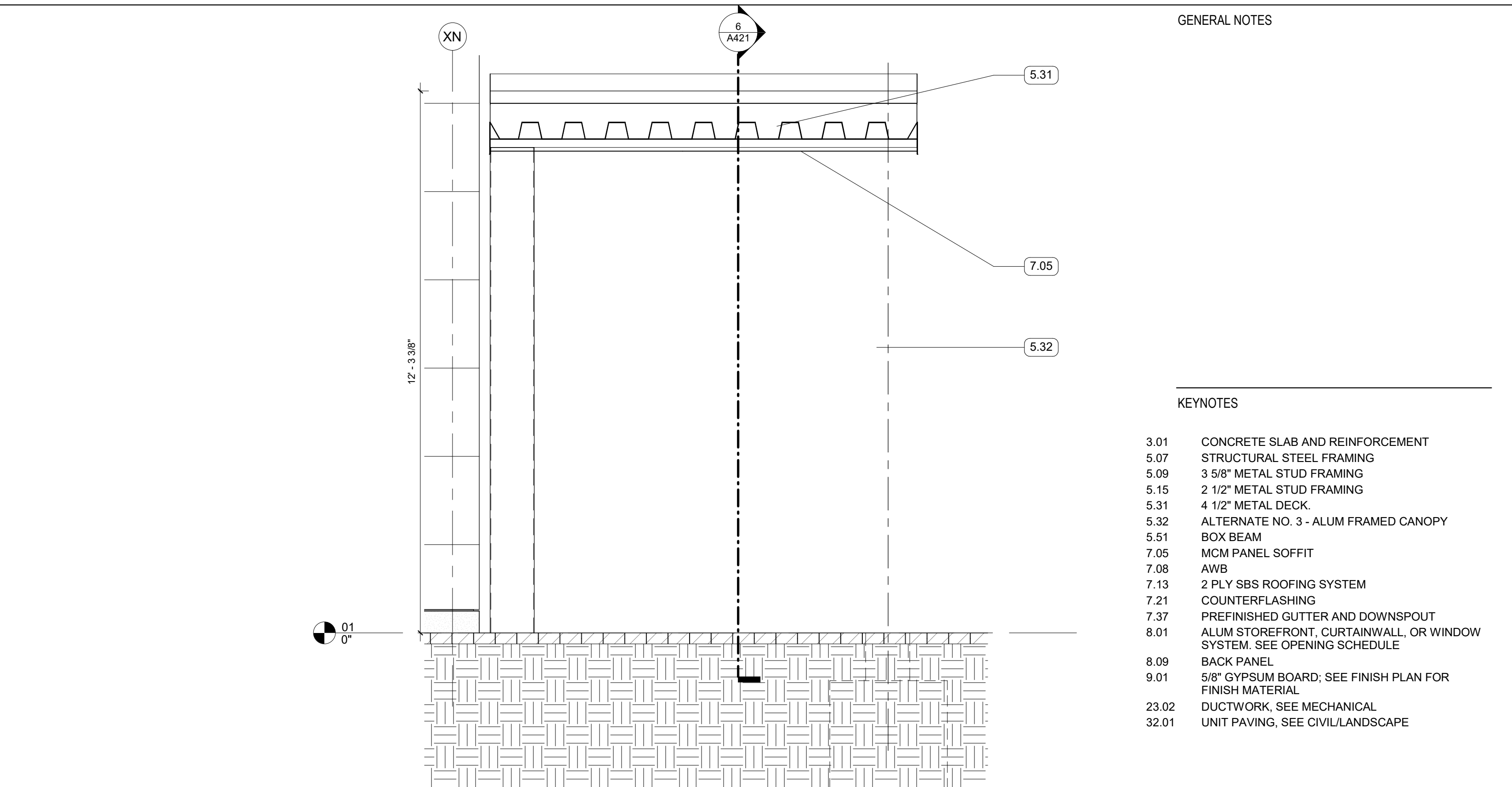
9 VESTIBULE SOUTH - ROOF
1/2" = 1'-0"



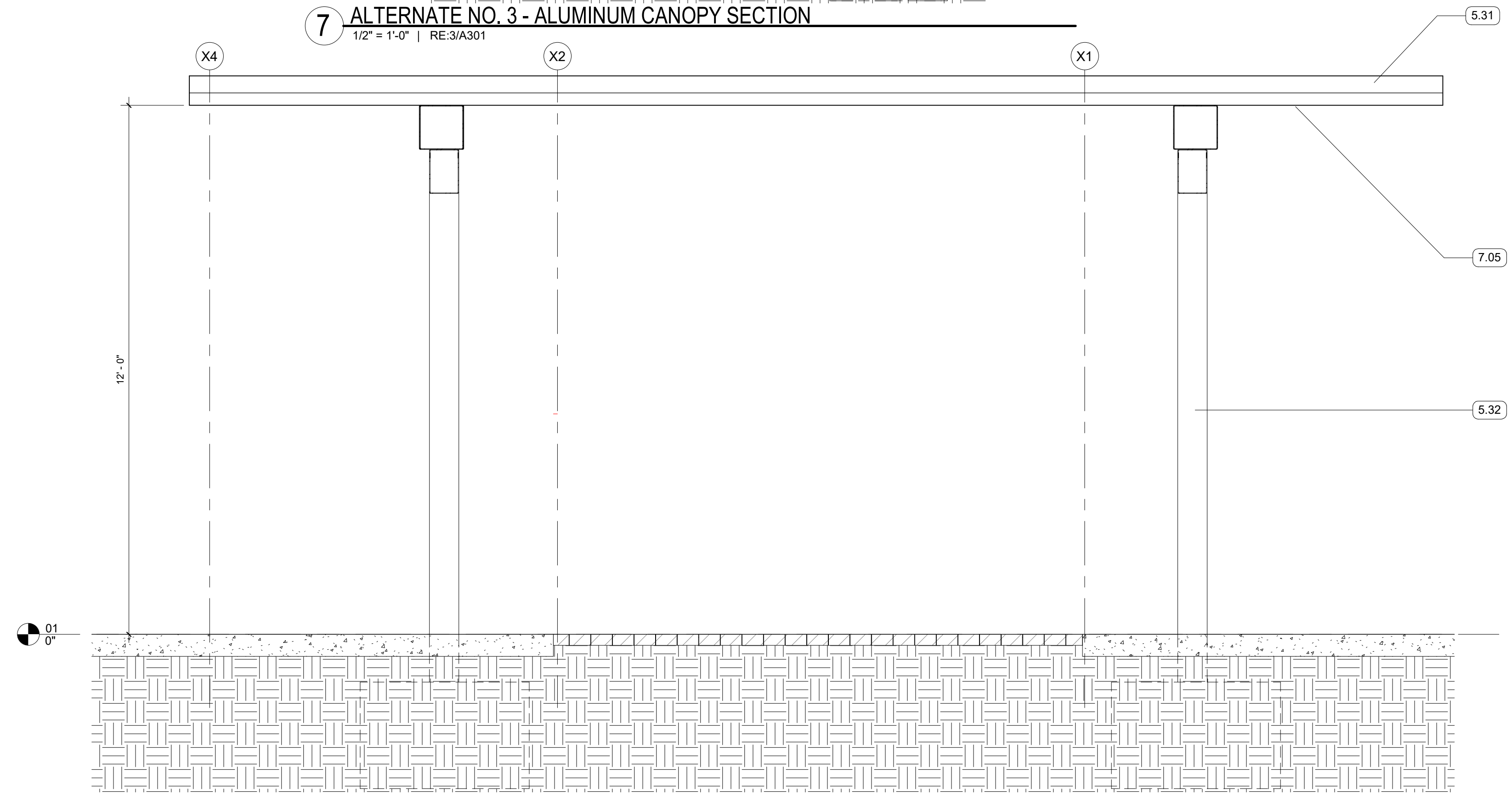
2 VESTIBULE SOUTH
1/2" = 1'-0" | RE:1/A101



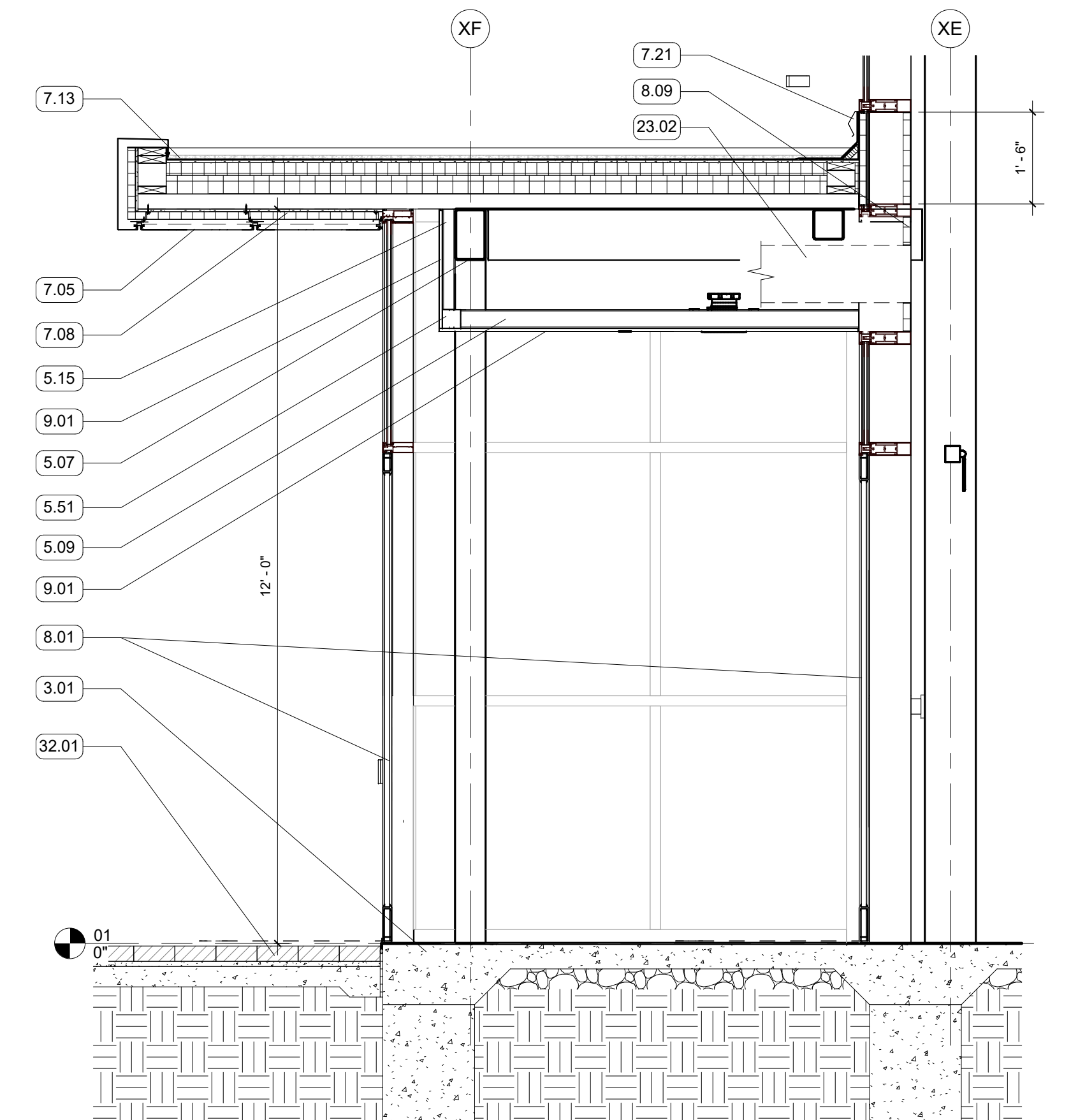
3 SECTION - SOUTH VESTIBULE
1/2" = 1'-0" | RE:2/A421



7 ALTERNATE NO. 3 - ALUMINUM CANOPY SECTION
1/2" = 1'-0" | RE:3/A301



6 ALTERNATE NO. 3 - ALUMINUM CANOPY LONGITUDINAL SECTION
1/2" = 1'-0" | RE:5/A421



4 SECTION - NORTH VESTIBULE
1/2" = 1'-0" | RE:1/A421

GENERAL NOTES

KEYNOTES

- 3.01 CONCRETE SLAB AND REINFORCEMENT
- 5.07 STRUCTURAL STEEL FRAMING
- 5.09 3 5/8" METAL STUD FRAMING
- 5.15 2 1/2" METAL STUD FRAMING
- 5.31 4 1/2" METAL DECK
- 5.32 ALTERNATE NO. 3 - ALUM FRAMED CANOPY
- 5.51 BOX BEAM
- 7.05 MCM PANEL SOFFIT
- 7.08 AWB
- 7.13 2 PLY SBS ROOFING SYSTEM
- 7.21 COUNTERFLASHING
- 7.37 PREFINISHED GUTTER AND DOWNSPOUT
- 8.01 ALUM STOREFRONT, CURTAINWALL, OR WINDOW SYSTEM. SEE OPENING SCHEDULE
- 8.09 BACK PANEL
- 9.01 5/8" GYPSUM BOARD; SEE FINISH PLAN FOR FINISH MATERIAL
- 23.02 DUCTWORK; SEE MECHANICAL
- 32.01 UNIT PAVING; SEE CIVIL/LANDSCAPE