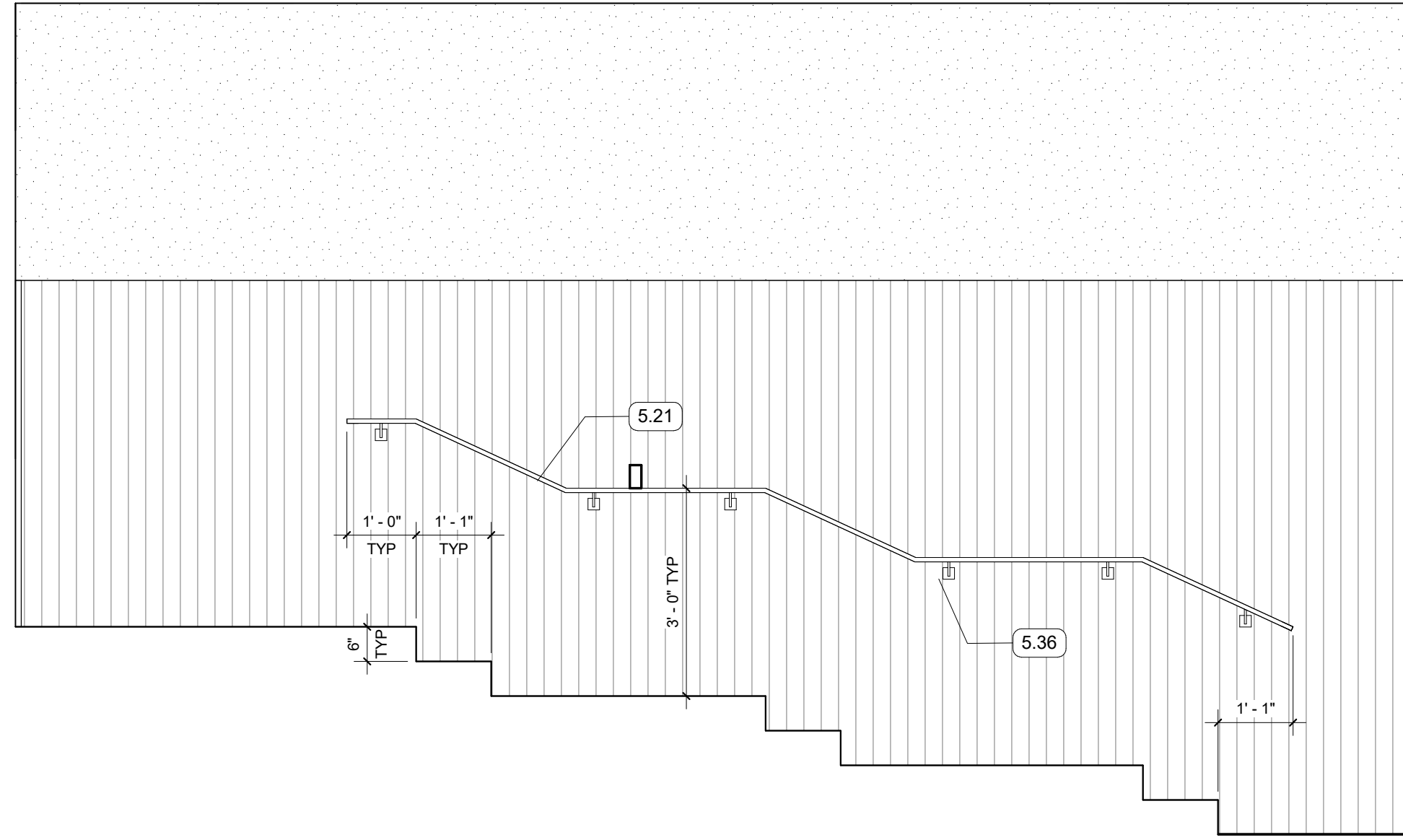
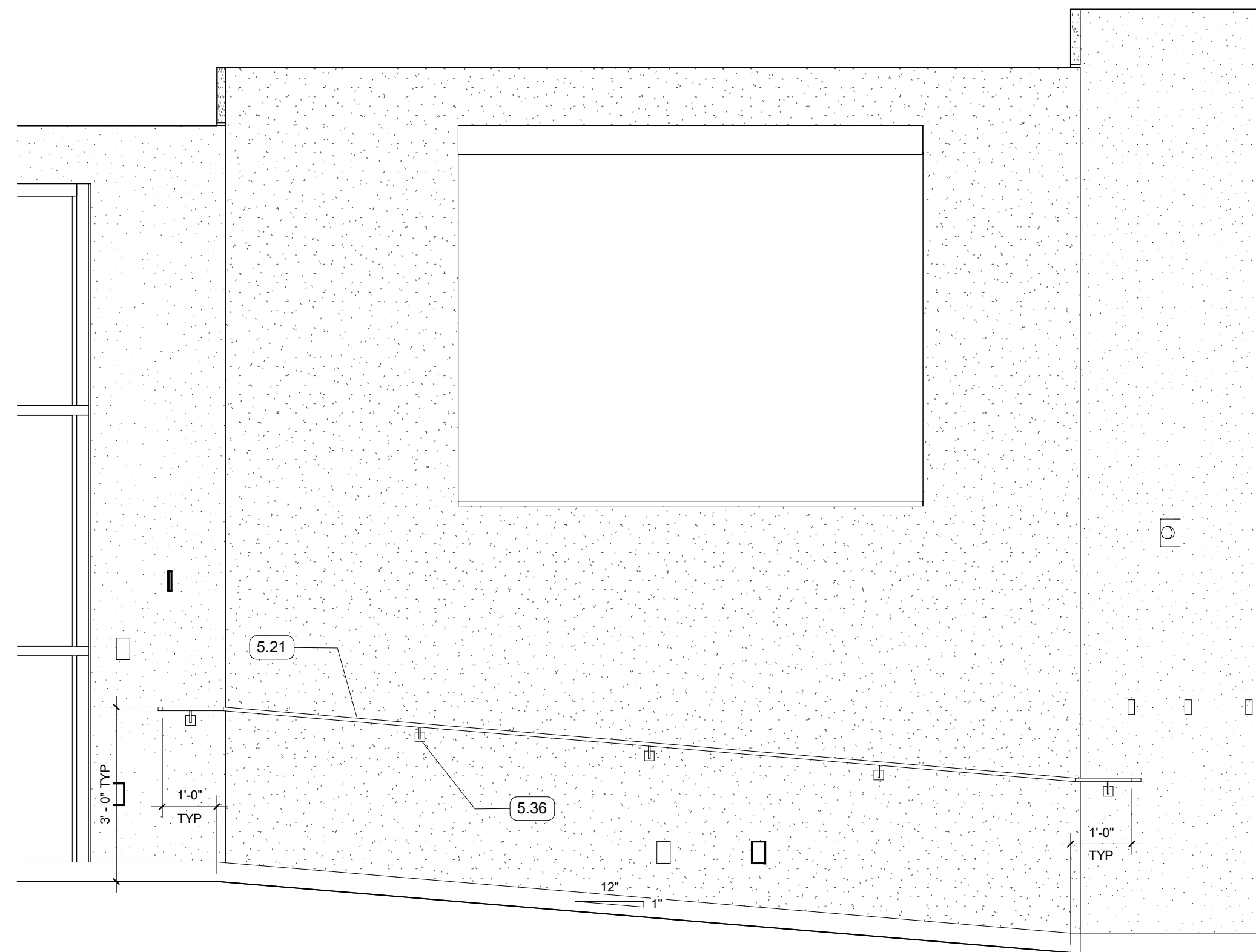


2 AUDITORIUM 101 - MID-AISLE HANDRAIL
1/2" = 1'-0" | RE:1/A414

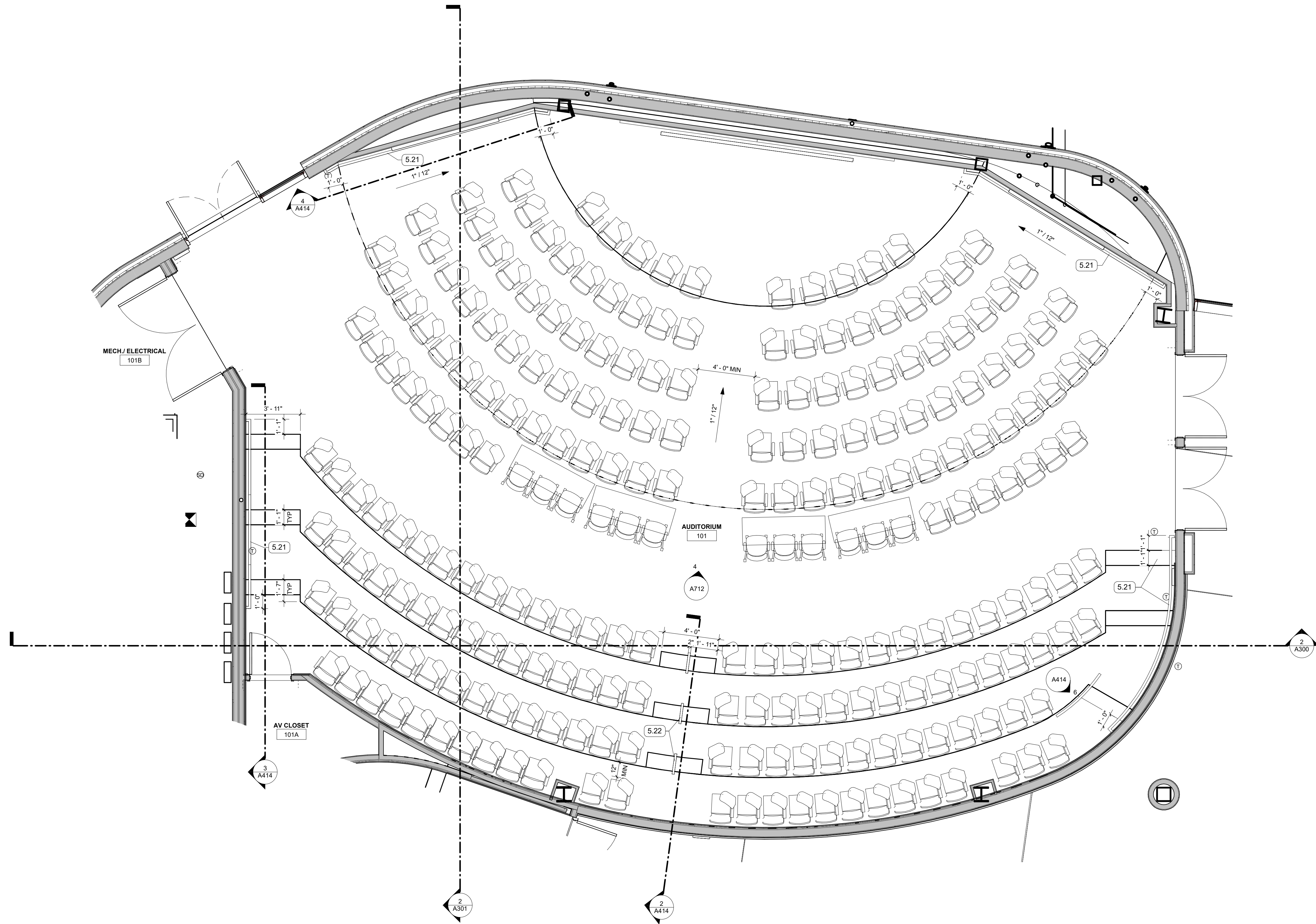


3 TYPICAL WALL MOUNTED STAIR
HANDRAIL AT ROOMS 101, 103 & 105
1/2" = 1'-0" | RE:1/A414

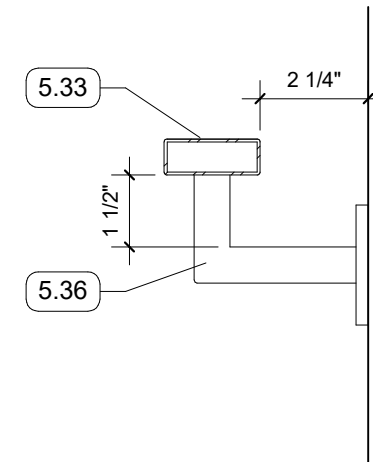


4 TYPICAL WALL MOUNTED RAMP
HANDRAIL AT ROOMS 101, 103 & 105
1/2" = 1'-0" | RE:1/A414

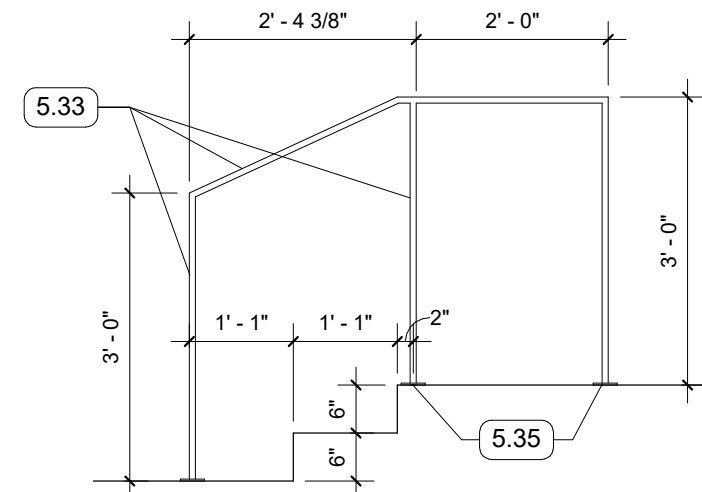
- KEYNOTES
- 5.21 WALL MOUNTED HANDRAIL, RETURN TO WALL AT ENDS, SEE 5/A414
- 5.22 FREESTANDING STAIR HANDRAIL W/OUT EXTENSIONS, SEE 2/A414
- 5.33 2" X 3/4" STAINLESS STEEL TUBE W/ EASED CORNERS - MITER CORNERS, & GRIND WELDS SMOOTH
- 5.34 1 1/2" X 1 1/2" STAINLESS STEEL TUBE W/ EASED CORNERS
- 5.35 3" X 4" RECTANGULAR BASE PLATE
- 5.36 1" X 3/8" BAR WALL BRACKET W/ 2" X 2" WALL PLATE, PROVIDE BLOCKING IN WALL AS REQUIRED



1 ENLARGED PLAN - AUDITORIUM 101
1/4" = 1'-0" | RE:1/A101



5 TYPICAL DETAIL FOR WALL MOUNTED
HANDRAILS AT ROOMS 101, 103 & 105
3" = 1'-0"



6 HANDRAIL ELEVATION AUDITORIUM 101
1/2" = 1'-0" | RE:1/A414

NO.	REVISION	DATE

