

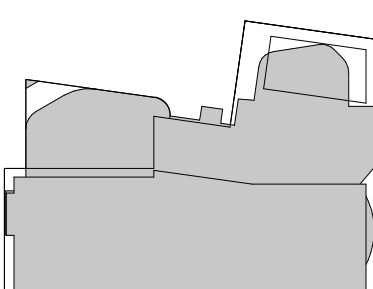
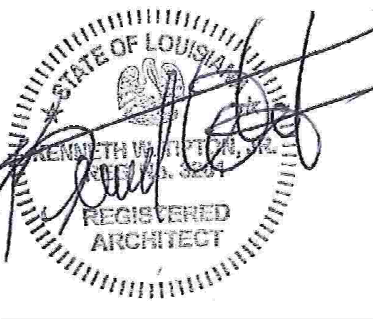
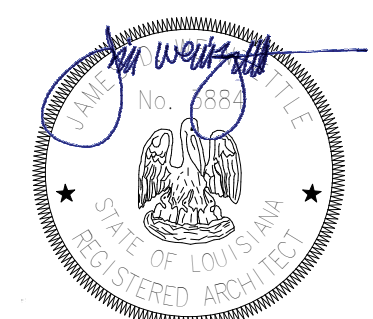
RESTROOM ACCESSORY SCHEDULE		
MARK	DESCRIPTION	COMMENTS
CH1	COAT HOOK	
GB2	GRAB BAR- HORIZONTAL- 36"	
GB3	GRAB BAR- HORIZONTAL- 42"	
GB5	GRAB BAR- VERTICAL- 18"	
ND1	SANITARY NAPKIN DISPOSAL	
SC1	SEAT COVER DISPENSER	
TP3	TP DISPENSER	
US1	URINAL SCREEN	

- KEYNOTES
- 10.01 WALL-MOUNTED TOILET PARTITIONS, PROVIDE BLOCKING AS RECD
  - 10.02 GRAB BARS, PROVIDE BLOCKING IN WALL
  - 10.03 MIRROR, SIZE SHOWN IN INTERIOR ELEVATIONS
  - 10.04 ADA-COMPLIANT WATER COOLER / BOTTLE FILLER, SEE PLUMB

CONSULTANTS  
Monsieur & Associates, LLC  
CABDO Landscape Architecture, LLC  
Fox Nease Engineering, LLC  
Sela O'Brien  
Mechanical Engineering  
Associated Design Group, Inc.  
Electrical Engineering  
Specialty Architecture

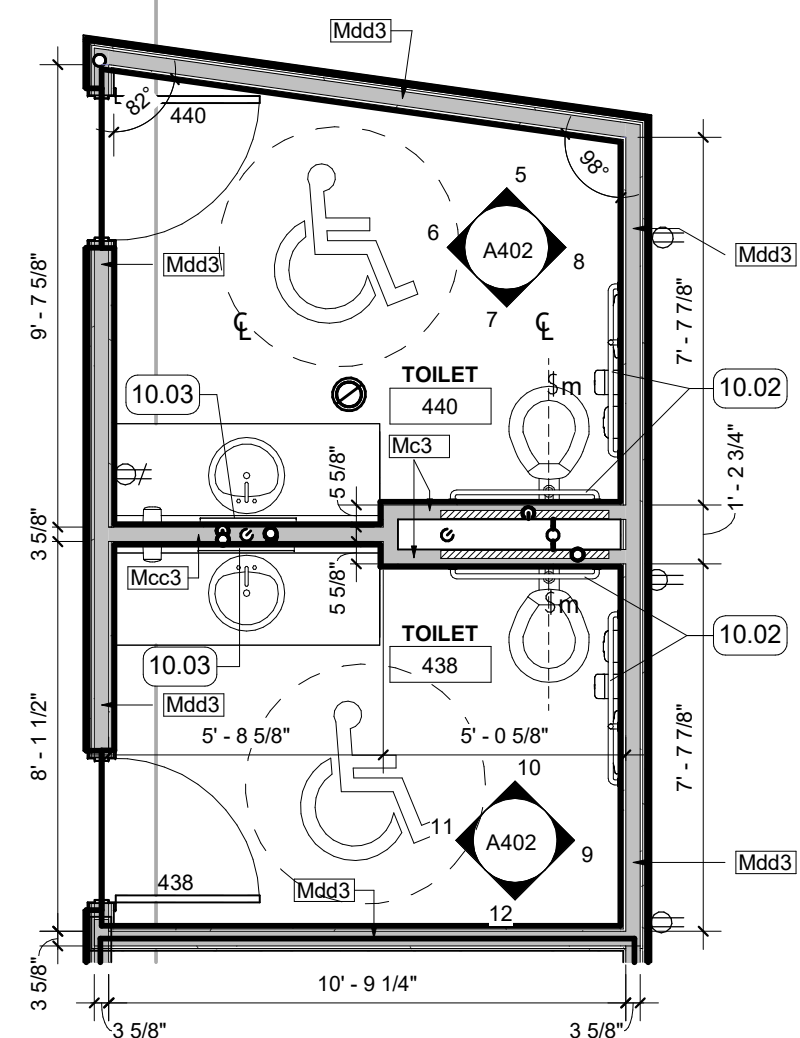
PROJECT # 19-602-23-01  
ARCH PROJECT # 2023.20 / 103160-23  
SITE ID: NEW SITE CODE: 6-40-023  
DATE OCTOBER 10, 2023  
Ashe Broussard Weinzettelle Architects, LLP  
Tipton Associates APAC, A Joint Venture  
301 Jackson Street, Suite 205  
Alexandria, LA 71301

NO.	REVISION	DATE

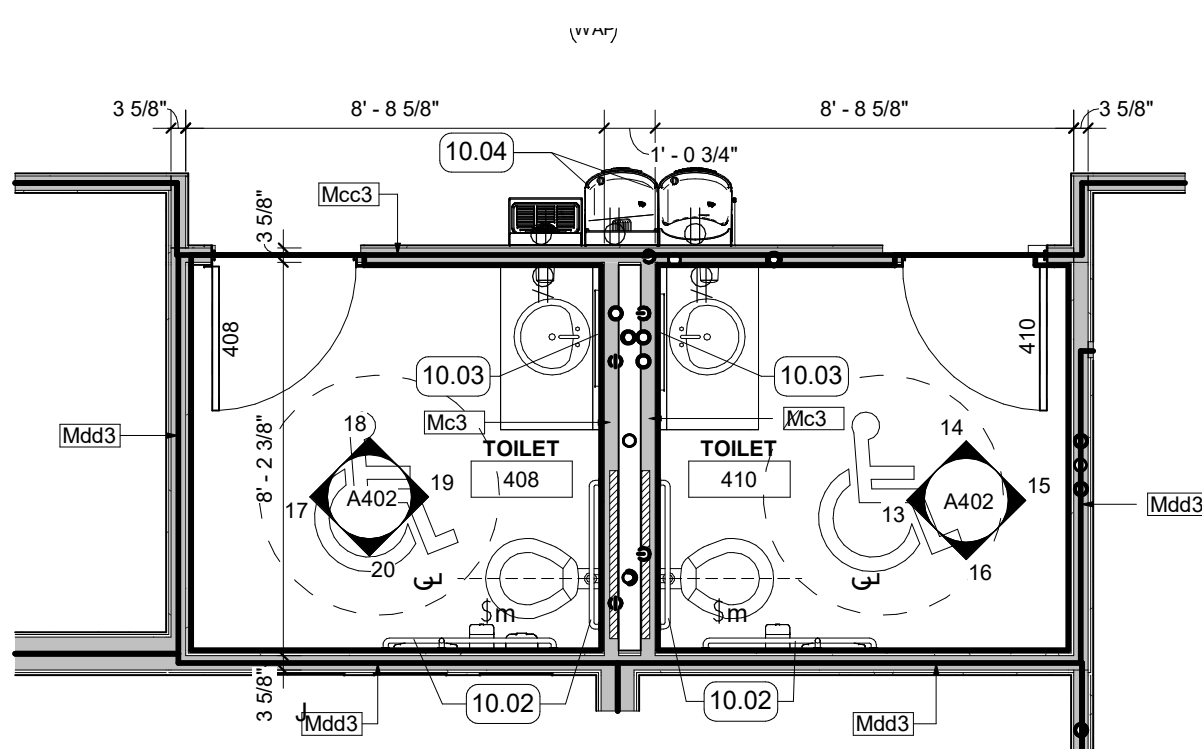


ENLARGED  
RESTROOM PLANS  
AND ELEVATIONS

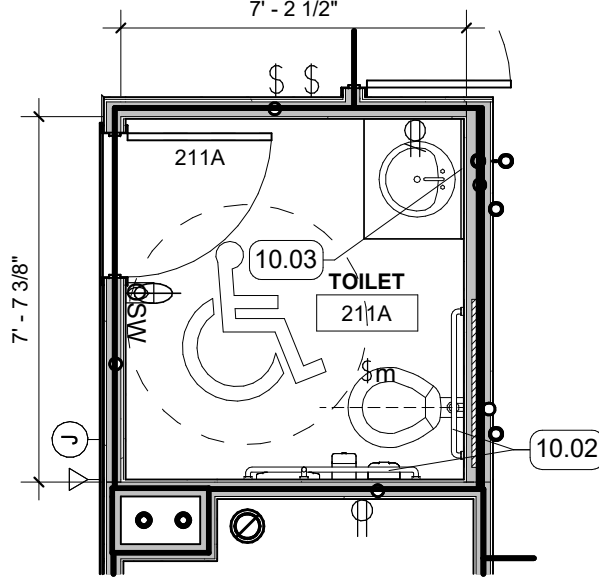
A400



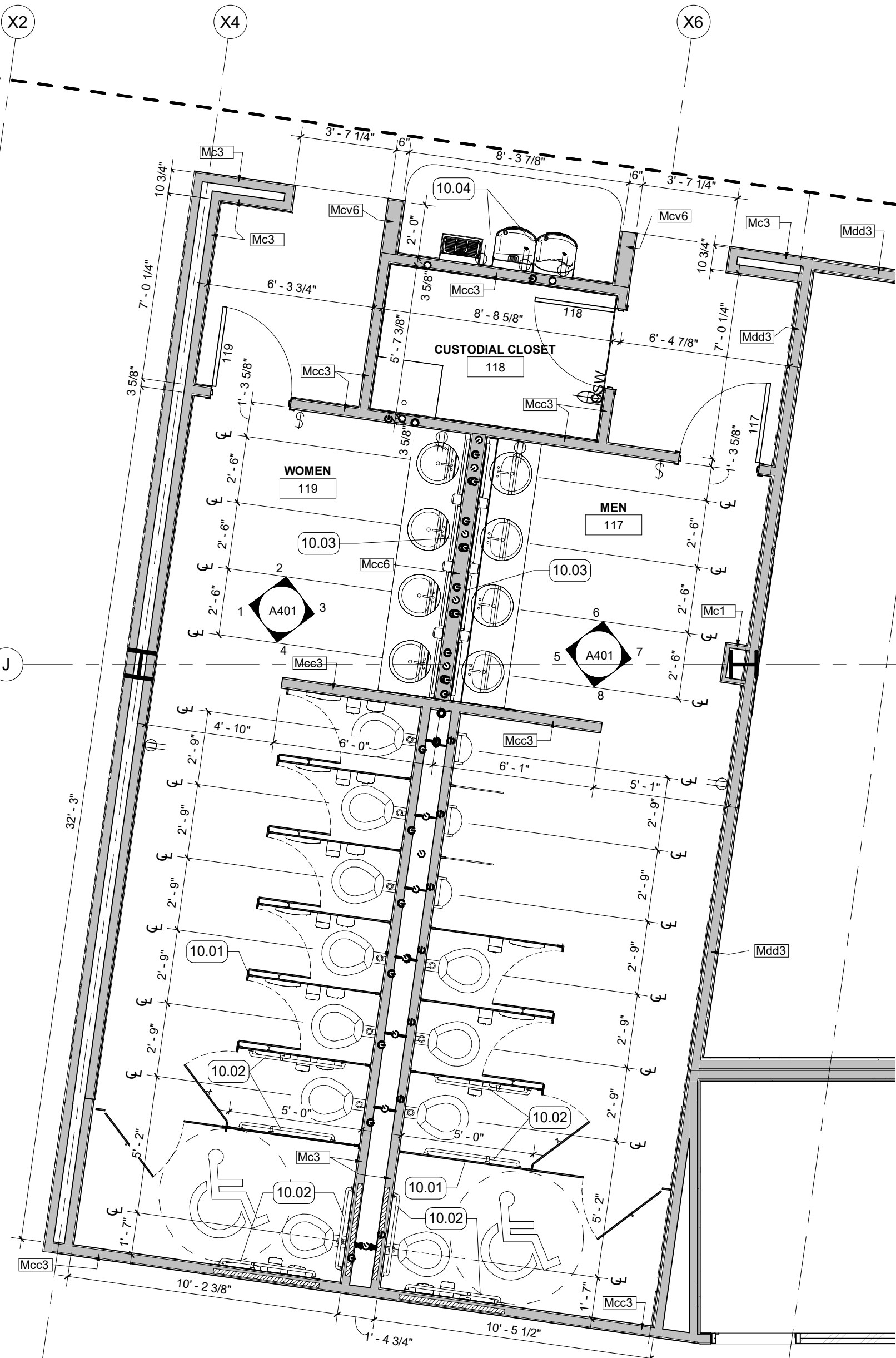
4 ENLARGED RESTROOM PLAN - 438, 440  
1/4" = 1'-0" | RE:1/A104



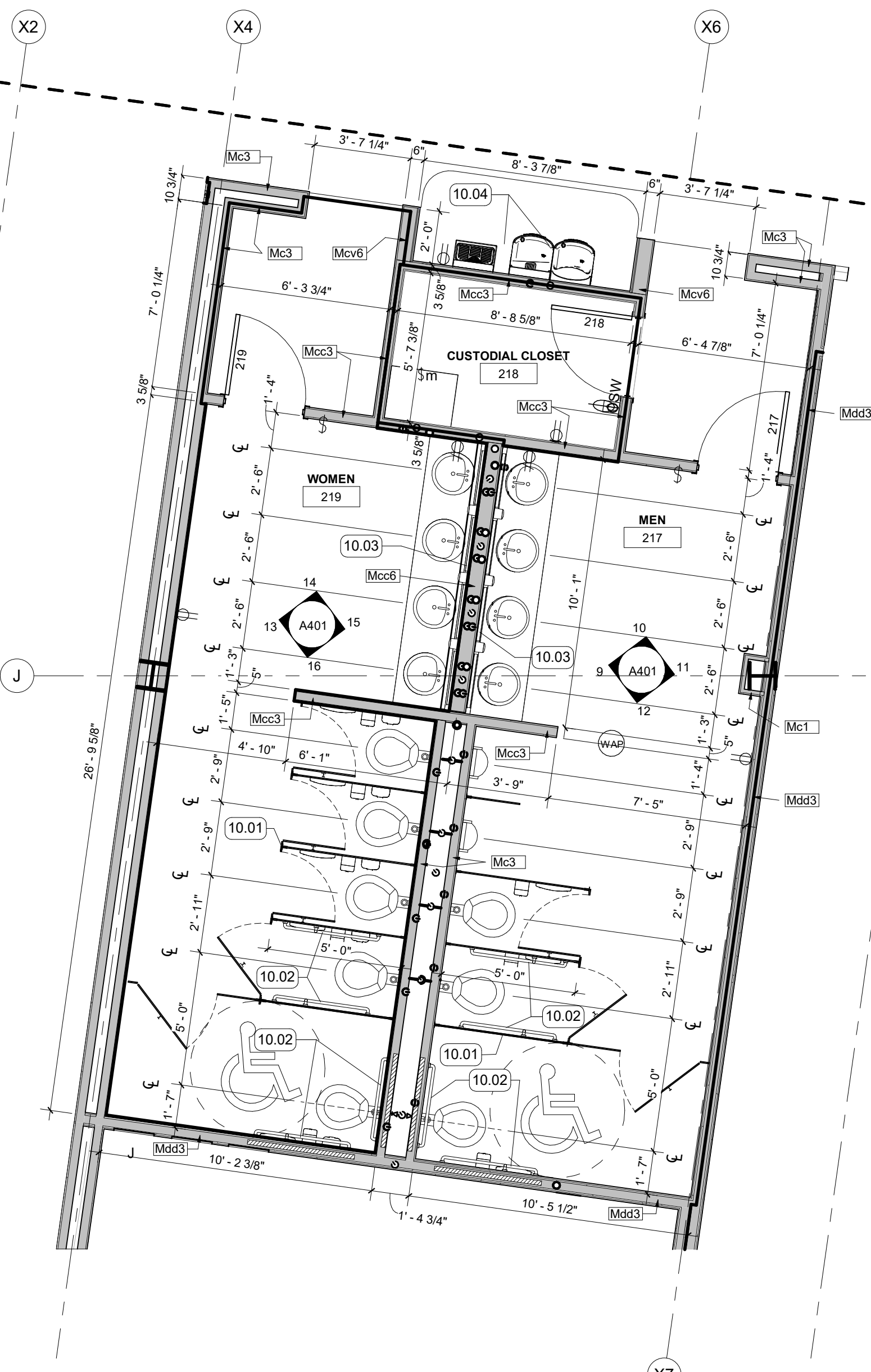
5 ENLARGED RESTROOM PLAN - 408, 410  
1/4" = 1'-0" | RE:1/A104



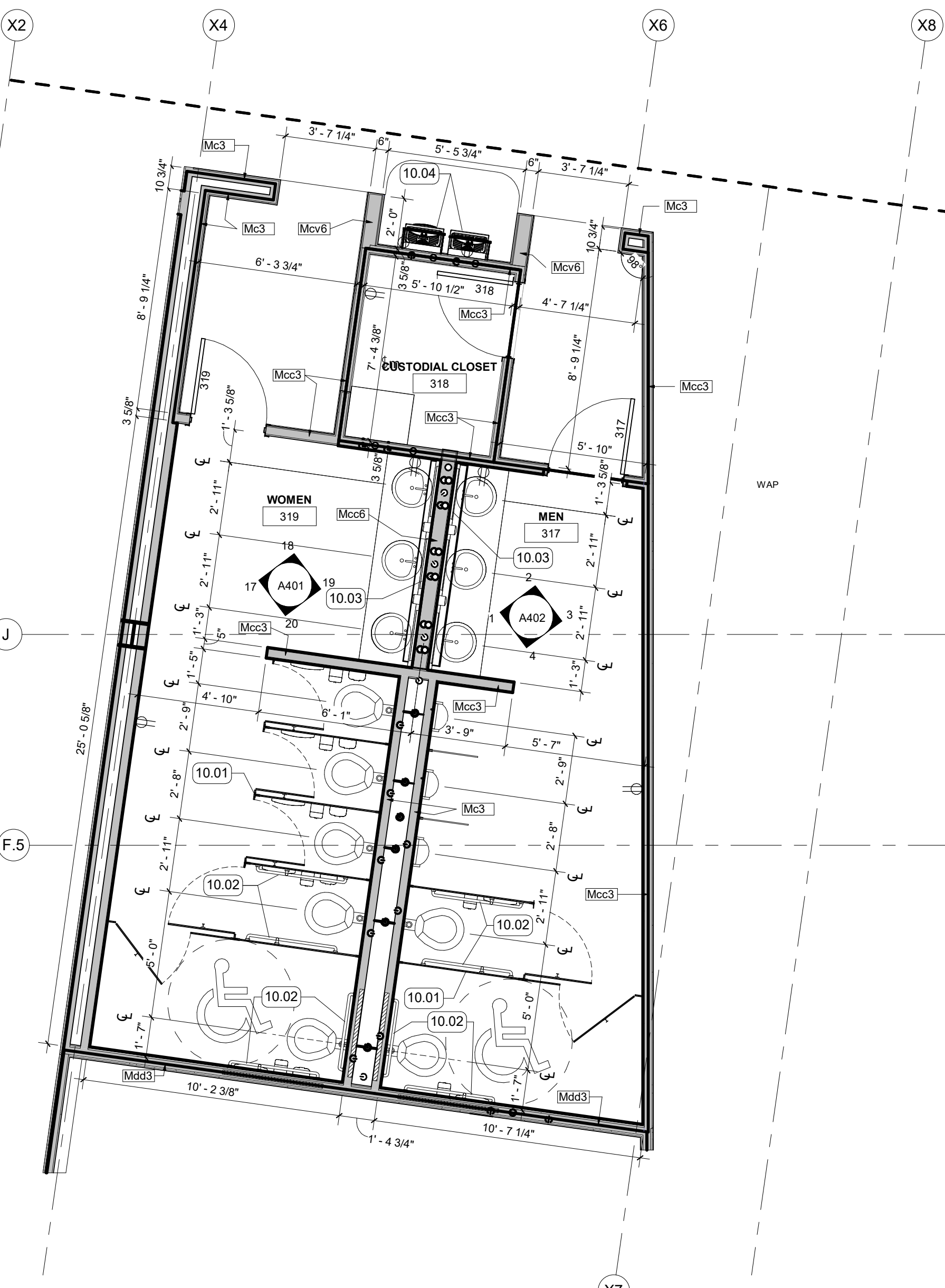
6 ENLARGED RESTROOM PLAN - 211A  
1/4" = 1'-0" | RE:1/A102



1 ENLARGED RESTROOM PLAN - 117, 118, 119  
1/4" = 1'-0" | RE:1/A101



2 ENLARGED RESTROOM PLAN - 217, 218, 219  
1/4" = 1'-0" | RE:1/A102



3 ENLARGED RESTROOM PLAN - MAIN 317, 318, 319  
1/4" = 1'-0" | RE:1/A103