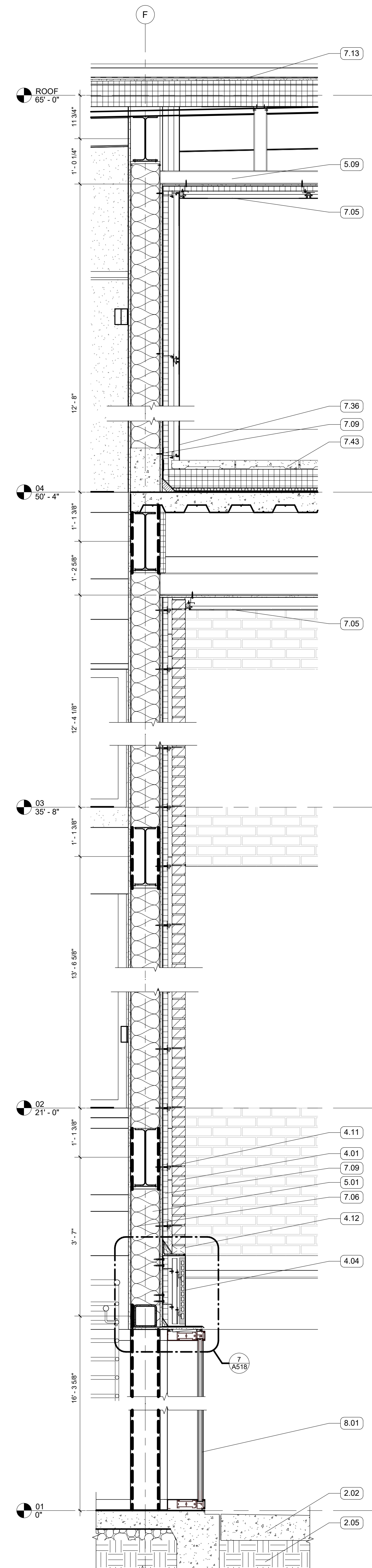


1 WALL SECTION
3/4" = 1'-0" | RE:1/A101

2 WALL SECTION
3/4" = 1'-0" | RE:1/A101

3 WALL SECTION
3/4" = 1'-0" | RE:1/A102



4 WALL SECTION
3/4" = 1'-0" | RE:1/A101

GENERAL NOTES

KEYNOTES

- 2.02 CONCRETE SIDEWALK
- 2.05 COMPACTED FILL
- 4.01 FACE BRICK VENEER, RUNNING BOND
- 4.02 4" RECESSED BRICK COURSE, RUNNING BOND, RECESS HORIZONTAL BANDS AN ADDITIONAL 1/2"
- 4.04 TERRA COTTA RAINSCREEN - STACK BOND, UNIT SIZE #1
- 4.08 PLASTER SOFFIT SYSTEM ON MTL. FRAMING - ALTERNATE NO. 2 REPLACES PLASTER SYSTEM WITH TERRA COTTA LARGE FORMAT SOFFIT PANELS
- 4.10 FACE BRICK, SPECIAL SHAPE SILL
- 4.11 MASONRY ANCHORS
- 4.12 WEEP VENTS AT 24" O.C. MIN
- 4.20 CAST STONE PANEL
- 4.23 BONDED CORNER
- 5.01 8" METAL STUD FRAMING
- 5.03 5 1/2" COMPOSITE MTL DECK AND CONCRETE SLAB
- 5.06 6" METAL STUD FRAMING
- 5.07 STRUCTURAL STEEL FRAMING
- 5.09 3 5/8" METAL STUD FRAMING
- 5.11 BRIDGE STUD AS REQ'D
- 5.13 EDGE ANGLE
- 5.51 BOX BEAM
- 5.52 GALVANIZED LOOSE LINTEL - PAINT TO MATCH BRICK WHERE EXPOSED
- 6.02 WOOD BLOCKING
- 6.03 SOLID SURFACE WINDOW STOOL WITH CHAMFERED EDGES
- 7.03 PREFINISHED COPING FLASHING
- 7.05 MCM PANEL SOFFIT
- 7.06 BATT INSULATION, SIZED TO MATCH STUD DEPTH
- 7.09 MINERAL FIBER BOARD INSULATION
- 7.12 2 1/2" POLYISO INSULATION
- 7.13 2 PLY SBS ROOFING SYSTEM
- 7.15 CLEAT, CONT.
- 7.29 SPRAYED FOAM INSULATION
- 7.32 GRAVEL STOP FASCIA
- 7.36 MCM PANEL
- 7.43 PEDESTAL PAVER - SEE ROOF SYSTEM IN ALTERNATE NO. 1
- 7.44 WOOD PAVER TILES; SEE LANDSCAPE FOR TILE LAYOUT PATTERN
- 7.55 ADJUSTABLE PEDESTALS
- 8.01 ALUM STOREFRONT, CURTAINWALL, OR WINDOW SYSTEM; SEE OPENING SCHEDULE
- 8.10 STEEL CURTAIN WALL ANCHOR W/ NON-METALLIC SHIMS
- 9.01 5/8" GYPSUM BOARD; SEE FINISH PLAN FOR FINISH MATERIAL
- 22.01 TRENCH DRAIN - CONNECT TO PLUMBING