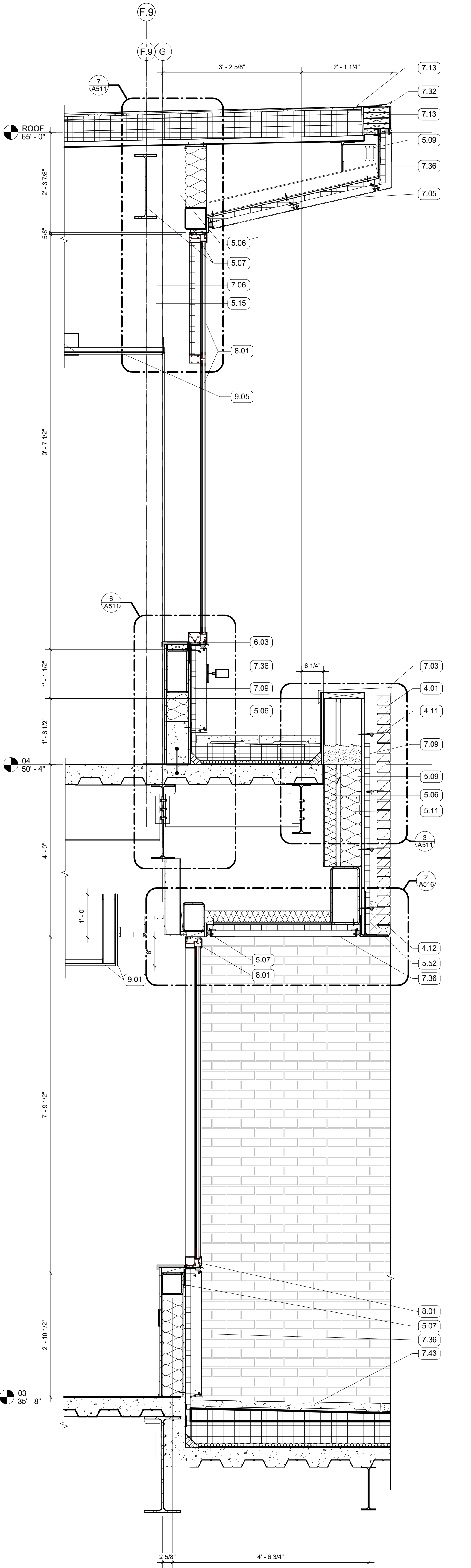
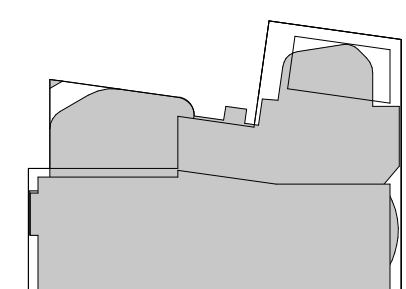
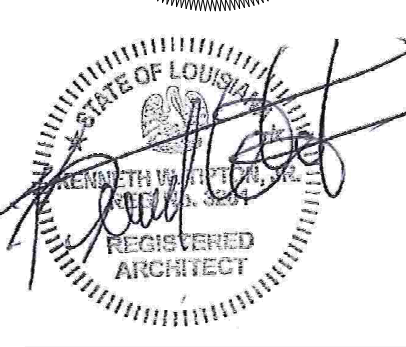
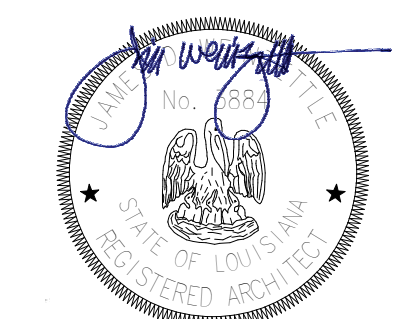
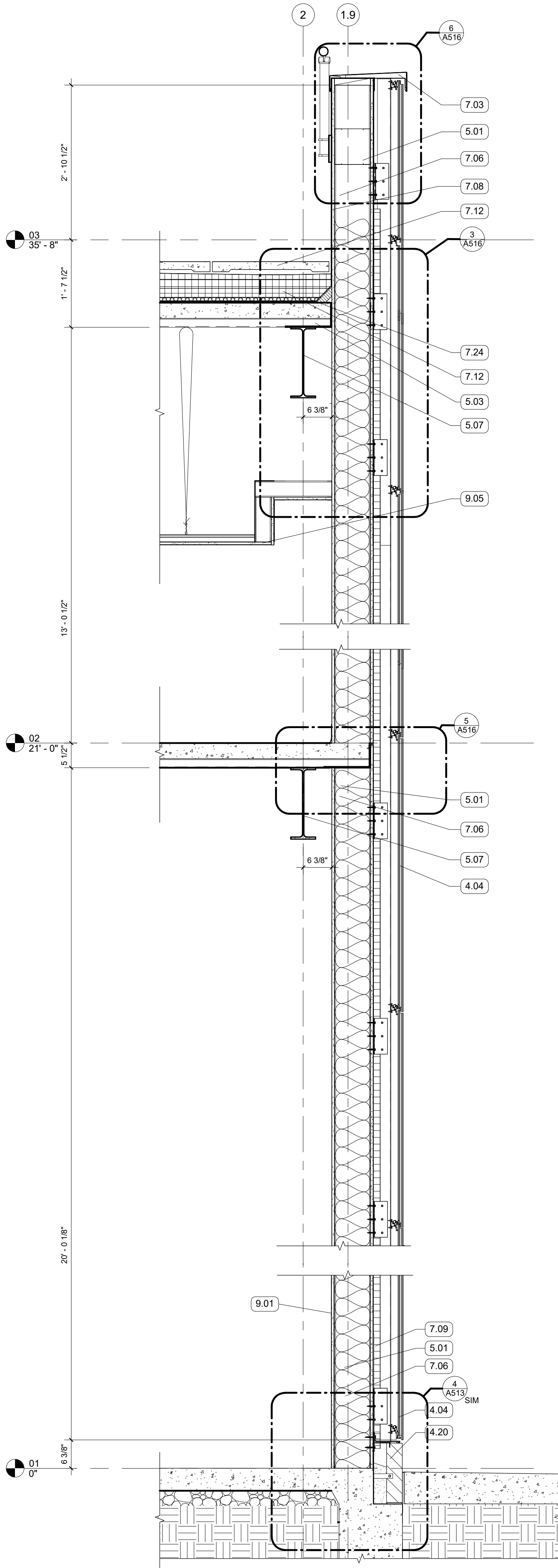


KEYNOTES

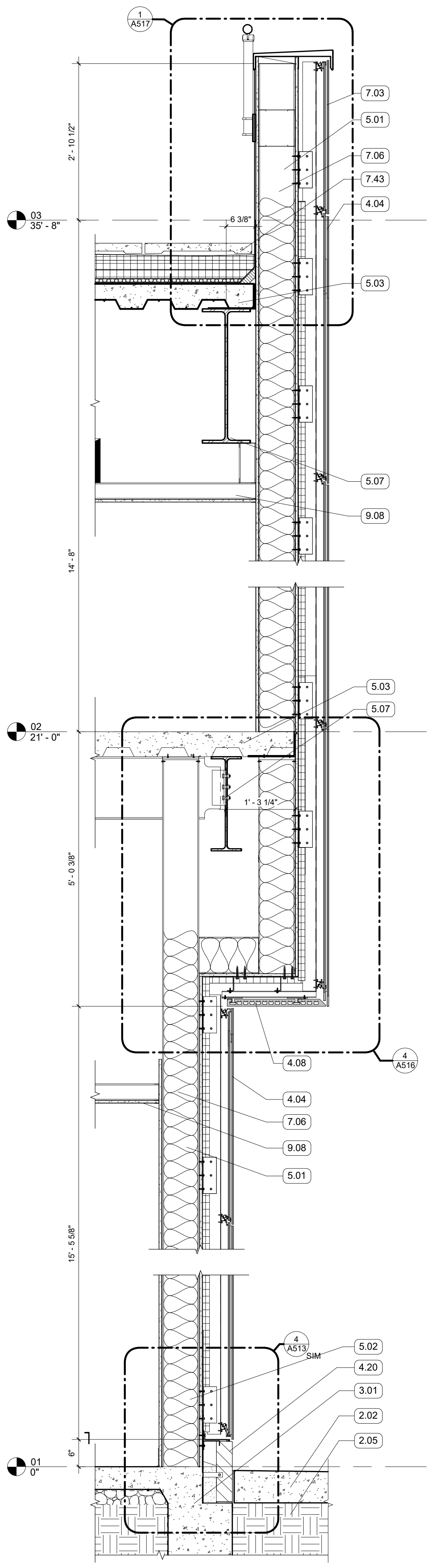
- 2.02 CONCRETE SIDEWALK
- 2.05 COMPACTED FILL
- 3.01 CONCRETE SLAB AND REINFORCEMENT
- 4.01 FACE BRICK VENEER, RUNNING BOND
- 4.04 TERRA COTTA RAINSCREEN - STACK BOND, UNIT SIZE #1
- 4.08 PLASTER SOFFIT SYSTEM ON MTL. FRAMING - ALTERNATE NO. 2 REPLACES PLASTER SYSTEM WITH TERRA COTTA LARGE FORMAT SOFFIT PANELS
- 4.11 MASONRY ANCHORS
- 4.12 WEEP VENTS AT 24" O.C. MIN
- 4.20 CAST STONE PANEL
- 5.01 8" METAL STUD FRAMING
- 5.02 8" METAL STUD TRACK
- 5.03 5 1/2" COMPOSITE MTL DECK AND CONCRETE SLAB
- 5.06 6" METAL STUD FRAMING
- 5.07 STRUCTURAL STEEL FRAMING
- 5.09 3 5/8" METAL STUD FRAMING
- 5.11 BRIDGE STUD AS REQ'D
- 5.12 2 1/2" METAL STUD FRAMING
- 5.15 GALVANIZED LOOSE UNTEL - PAINT TO MATCH BRICK WHERE EXPOSED
- 5.52 SOLID SURFACE WINDOW STOOL WITH CHAMFERED EDGES
- 6.03 PREFINISHED COPING FLASHING
- 7.03 MCM PANEL SOFFIT
- 7.05 BATT INSULATION, SIZED TO MATCH STUD DEPTH
- 7.08 AWB
- 7.09 MINERAL FIBER BOARD INSULATION
- 7.12 2 1/2" POLYISO INSULATION
- 7.13 2 PLY SBS ROOFING SYSTEM
- 7.24 ROOF DRAINAGE MAT
- 7.32 GRAVEL STOP FASCIA
- 7.36 MCM PANEL
- 7.43 PEDESTAL PAVER - SEE ROOF SYSTEM IN ALTERNATE NO. 1
- 8.01 ALUM STOREFRONT, CURTAINWALL, OR WINDOW SYSTEM - SEE OPENING SCHEDULE
- 9.01 5/8" GYPSUM BOARD; SEE FINISH PLAN FOR FINISH MATERIAL
- 9.05 ACOUSTICAL CEILING TILE SYSTEM; SEE RCP AND FINISH SCHEDULE FOR TYPE
- 9.08 GYP BD CEILING ON METAL FRAMING



1 WALL SECTION
3/4" = 1'-0" | RE: 3/A201



2 WALL SECTION
3/4" = 1'-0" | RE: 1/A101



3 WALL SECTION
3/4" = 1'-0" | RE: 2/A201