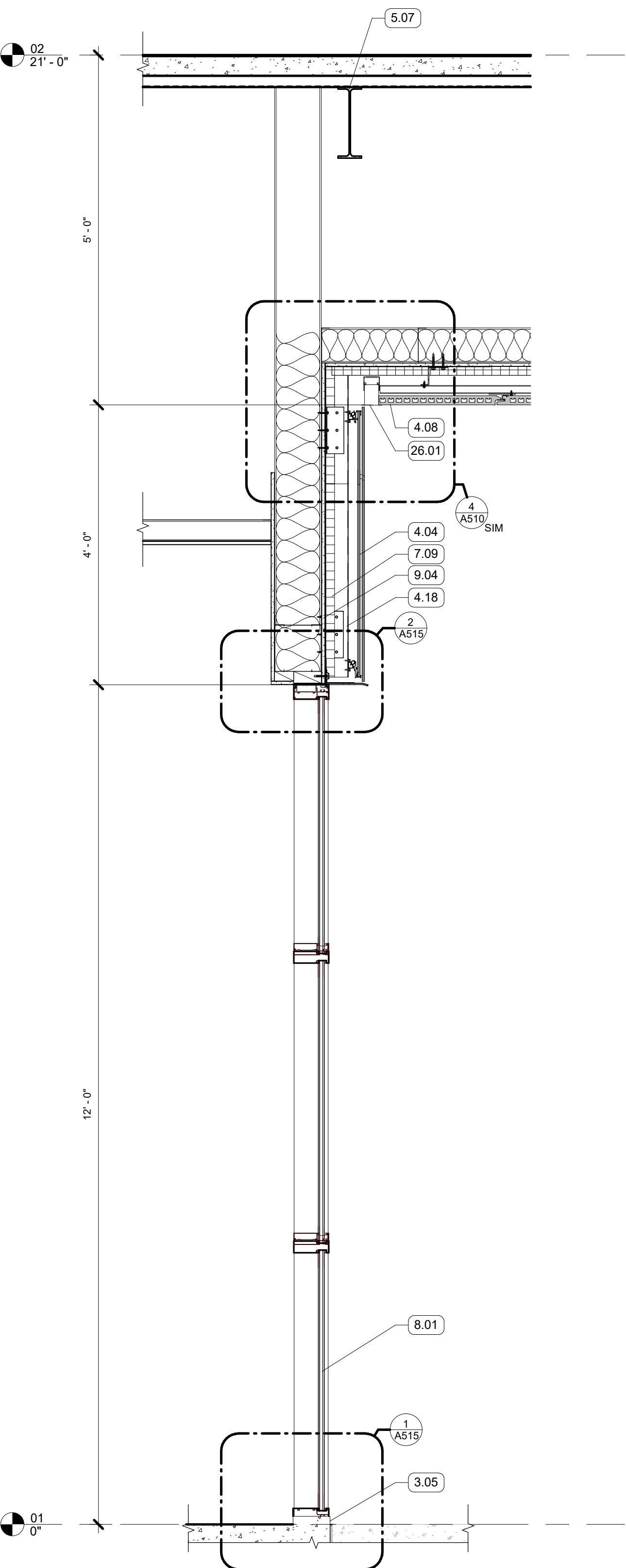
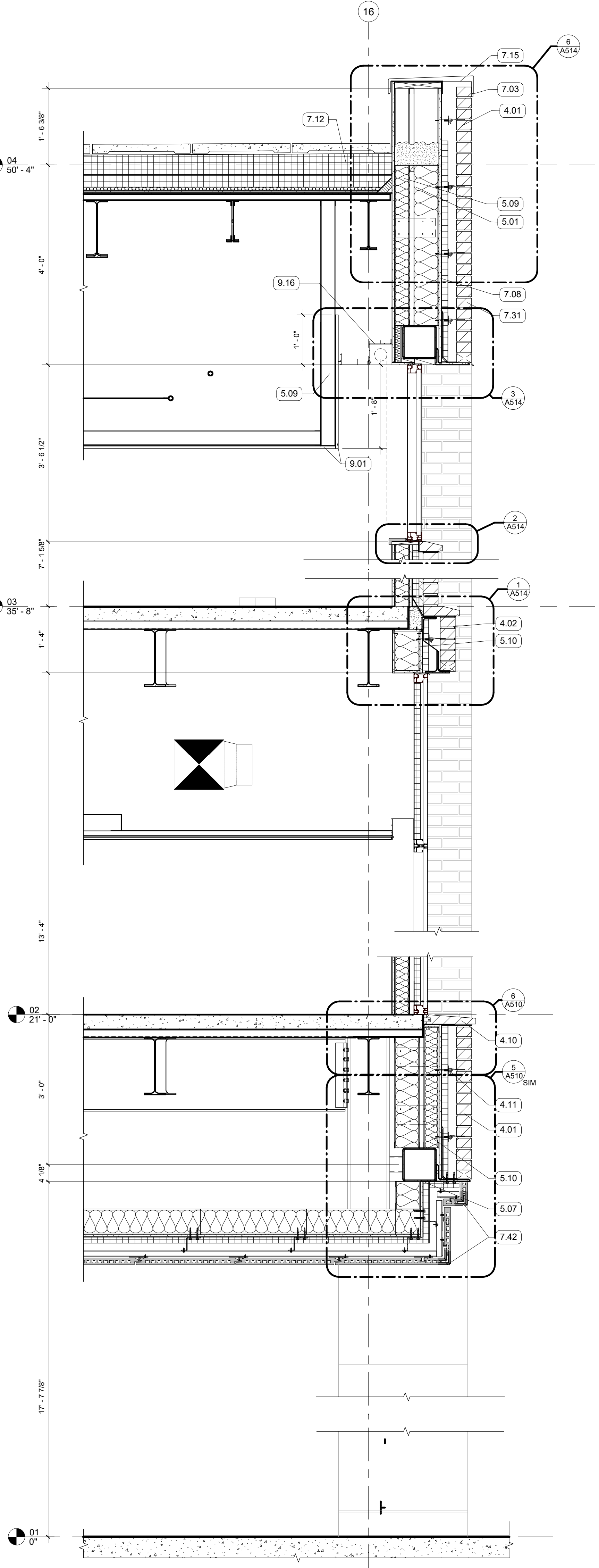


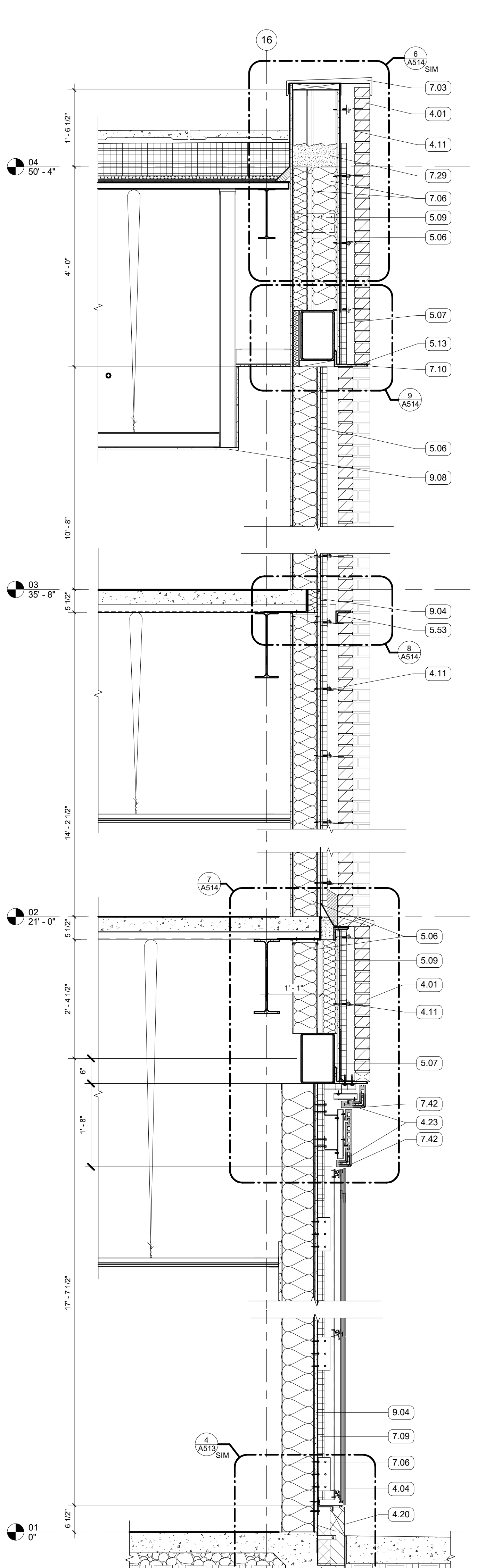
- KEYNOTES
- 3.05 CEMENT PARGE COAT ON EXPOSED SLAB EDGE
  - 4.01 FACE BRICK VENEER, RUNNING BOND
  - 4.02 4" RECESSED BRICK COURSE, RUNNING BOND, RECESS HORIZONTAL BANDS AN ADDITIONAL 1/2"
  - 4.04 TERRA COTTA RAINSCREEN - STACK BOND, UNIT SIZE #1
  - 4.08 PLASTER SOFFIT SYSTEM ON MTL. FRAMING - ALTERNATE NO. 2 REPLACES PLASTER SYSTEM WITH TERRA COTTA LARGE FORMAT SOFFIT PANELS
  - 4.10 FACE BRICK, SPECIAL SHAPE SILL
  - 4.11 MASONRY ANCHORS
  - 4.12 WEEP VENTS AT 24" O.C. MIN
  - 4.18 CONTINUOUS ALUMINUM SUBSTRUCTURE
  - 4.20 CAST STONE PANEL
  - 4.23 BONDED CORNER
  - 5.01 8" METAL STUD FRAMING
  - 5.06 6" METAL STUD FRAMING
  - 5.07 STRUCTURAL STEEL FRAMING
  - 5.09 3 5/8" METAL STUD FRAMING
  - 5.10 3 5/8" METAL TRACK
  - 5.13 EDGE ANGLE
  - 5.52 GALVANIZED LOOSE LINTEL - PAINT TO MATCH BRICK WHERE EXPOSED
  - 5.53 SHELF ANGLE - RE: STRUCTURAL
  - 7.03 PREFINISHED COPING FLASHING
  - 7.06 BATT INSULATION, SIZED TO MATCH STUD DEPTH
  - 7.08 AWB
  - 7.09 MINERAL FIBER BOARD INSULATION
  - 7.10 THRU-WALL FLASHING, SLOPED TO DRAIN
  - 7.12 2 1/2" POLYISO INSULATION
  - 7.15 GLEAT, CONT
  - 7.29 SPRAYED FOAM INSULATION
  - 7.31 ST STL SCUPPER
  - 7.42 DRIP EDGE
  - 8.01 ALUM STOREFRONT, CURTAINWALL, OR WINDOW SYSTEM, SEE OPENING SCHEDULE
  - 9.01 5/8" GYPSUM BOARD; SEE FINISH PLAN FOR FINISH MATERIAL
  - 9.04 5/8" EXTERIOR SHEATHING
  - 9.08 GYP BD CEILING ON METAL FRAMING
  - 9.16 2-SIDED PERIMETER POCKET
  - 26.01 RECESSED LED FIXTURE



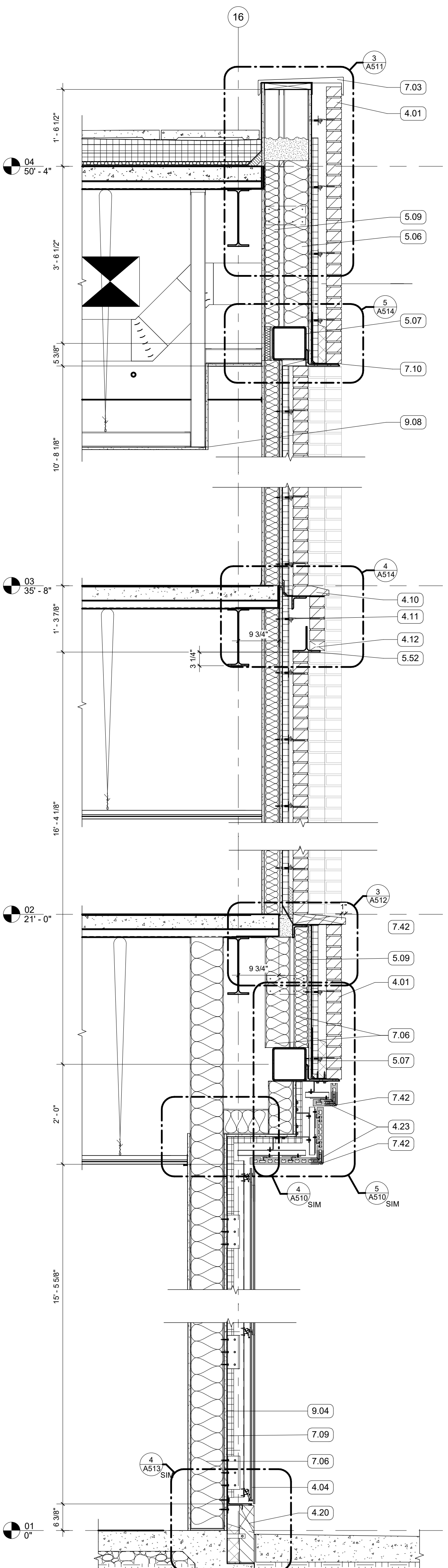
4 WALL SECTION  
3/4" = 1'-0" | RE:1/A101



3 WALL SECTION  
3/4" = 1'-0" | RE:1/A101



2 WALL SECTION  
3/4" = 1'-0" | RE:4/A200



1 WALL SECTION  
3/4" = 1'-0" | RE:1/A101