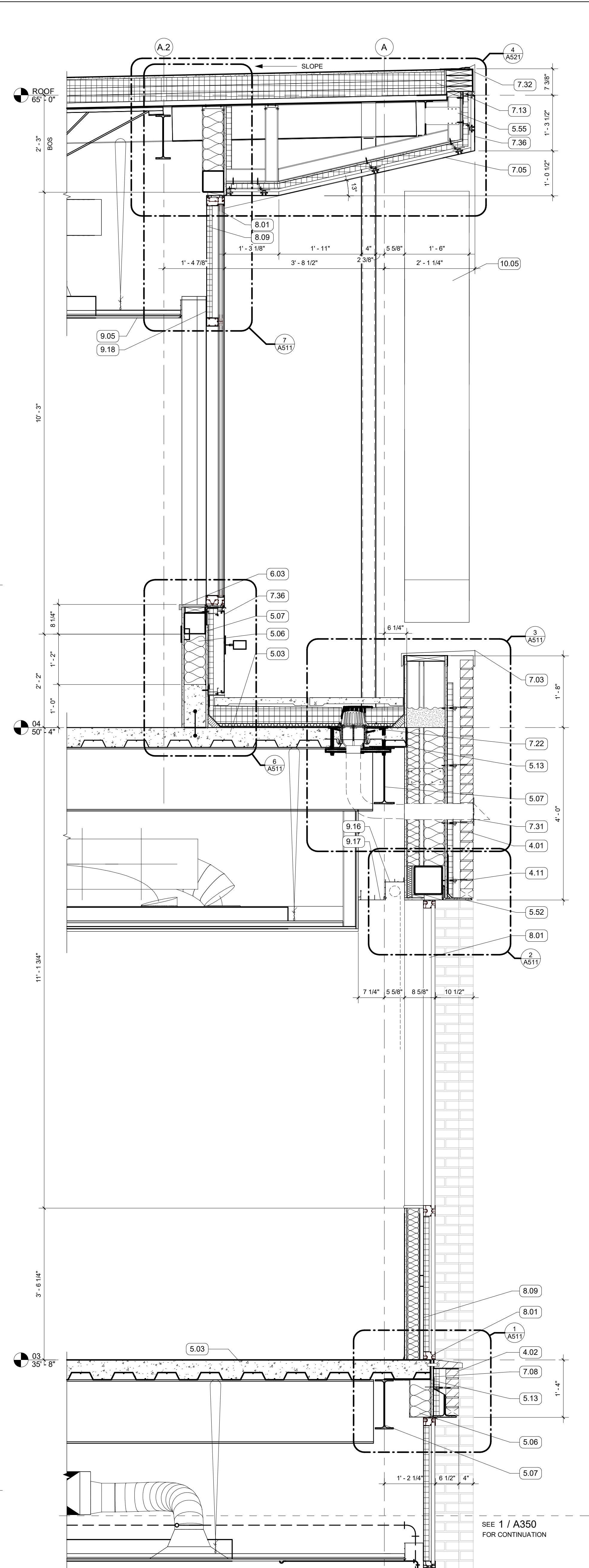
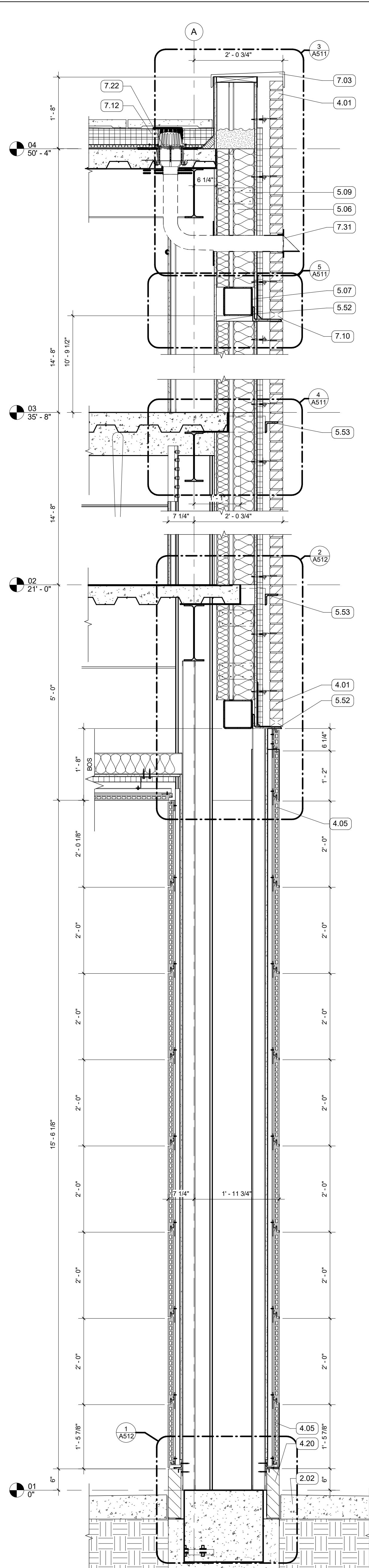


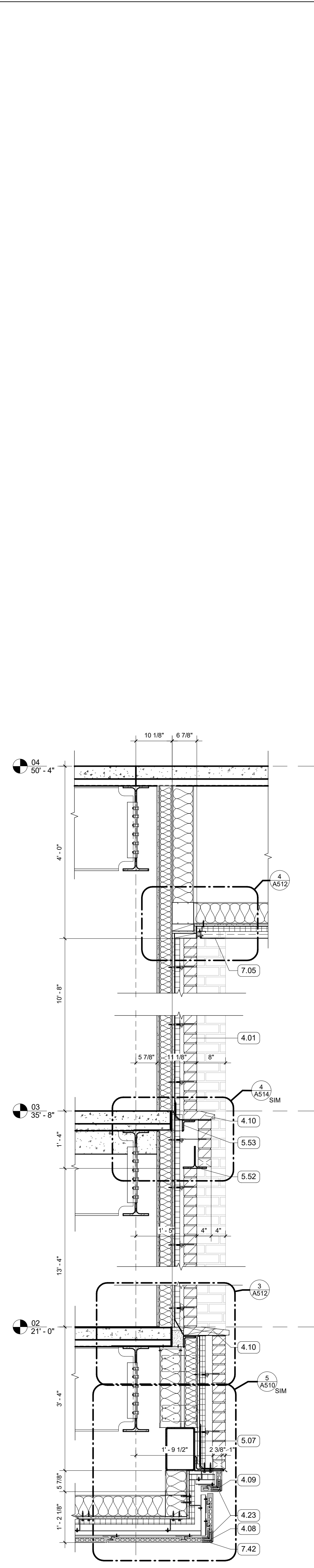
1 WALL SECTION
3/4" = 1'-0" | RE:1/A101



2 WALL SECTION
3/4" = 1'-0" | RE:1/A101



3 WALL SECTION
3/4" = 1'-0" | RE:1/A101



4 WALL SECTION
3/4" = 1'-0" | RE:1/A102

- KEYNOTES
- CONCRETE SIDEWALK
 - COMPACTED FILL
 - STRUCTURAL GRADE BEAM
 - FACE BRICK VENEER, RUNNING BOND
 - 4" RECESSED BRICK COURSE, RUNNING BOND, RECESS HORIZONTAL BANDS AN ADDITIONAL 1/2"
 - TERRA COTTA RAINSCREEN - STACK BOND, UNIT SIZE #1
 - TERRA COTTA RAINSCREEN - COLUMN WRAP, UNIT SIZE #2
 - PLASTER SOFFIT SYSTEM ON MTL. FRAMING - ALTERNATE NO. 2 REPLACES PLASTER SYSTEM WITH TERRA COTTA LARGE FORMAT SOFFIT PANELS
 - TERRA COTTA SPECIAL SHAPE END ENCLOSURE
 - FACE BRICK, SPECIAL SHAPE SILL
 - MASONRY ANCHORS
 - NON-CONTINUOUS ALUMINUM SUBSTRUCTURE
 - CONTINUOUS ALUMINUM SUBSTRUCTURE
 - CAST STONE PANEL
 - BONDED CORNER
 - 8" METAL STUD FRAMING
 - 5 1/2" COMPOSITE MTL. DECK AND CONCRETE SLAB
 - 6" METAL STUD FRAMING
 - STRUCTURAL STEEL FRAMING
 - 3 5/8" METAL STUD FRAMING
 - EDGE ANGLE
 - GALVANIZED LOOSE LITEL - PAINT TO MATCH BRICK WHERE EXPOSED
 - SHELF ANGLE - RE: STRUCTURAL
 - UNIVERSAL BYPASS STEEL CLIP
 - SOLID SURFACE WINDOW STOOL WITH CHAMFERED EDGES
 - PREFINISHED COPING FLASHING
 - AWB
 - MINERAL FIBER BOARD INSULATION
 - THRU-WALL FLASHING, SLOPED TO DRAIN
 - 2 1/2" POLYISO INSULATION
 - 2 PLY SBS ROOFING SYSTEM
 - ROOF DRAIN
 - FORMED ALUMINUM WINDOW HEAD FLASHING
 - FORMED ALUMINUM SILL
 - ST STL SCUPPER
 - GRAVEL STOP FASCIA
 - MCM PANEL
 - D RIP EDGE
 - ALUM STOREFRONT, CURTAINWALL, OR WINDOW SYSTEM. SEE OPENING SCHEDULE
 - BACK PANEL
 - 5/8" GYPSUM BOARD; SEE FINISH PLAN FOR FINISH MATERIAL
 - 5/8" EXTERIOR SHEATHING
 - ACOUSTICAL CEILING TILE SYSTEM. SEE RCP AND FINISH SCHEDULE FOR TYPE
 - 2-SIDED PERIMETER POCKET
 - CEILING PERIMETER FACE PLATE 7"
 - 3-SIDED PERIMETER POCKET
 - EXTERIOR DIMENSIONAL LOGO SIGNAGE
 - RECESSED LED FIXTURE

LEGEND

CONSULTANTS

Monsieur & Associates, LLC
 CABDO Landscape Architecture, LLC
 Fox Neust Engineering, LLC
 Sales O'Brien
 Mechanical and Electrical
 Associated Design Group, Inc.
 Specialty Architects

ASHE I BROUSSARD I WEINZETTLE
 ARCHITECTS

TIPTON
 ASSOCIATES

ISSUE FOR BID

LOUISIANA STATE UNIVERSITY
 ALEXANDRIA
 DOWNTOWN HEALTH SERVICES CENTER

800 JACKSON ST.
 ALEXANDRIA, LA 71301

PROJECT # 19-002-23-01
 ARCH PROJECT # 2023.20 / 1931.00-23
 SITE ID: NEW SITE CODE: 4-00-023
 DATE OCTOBER 10, 2023

Ashe Broussard Weinzettl Architects, LLP
 Tipton Associates APAC, A Joint Venture
 301 Jackson Street, Suite 205
 Alexandria, LA 71301

NO.	REVISION	DATE

WALL SECTIONS

A350