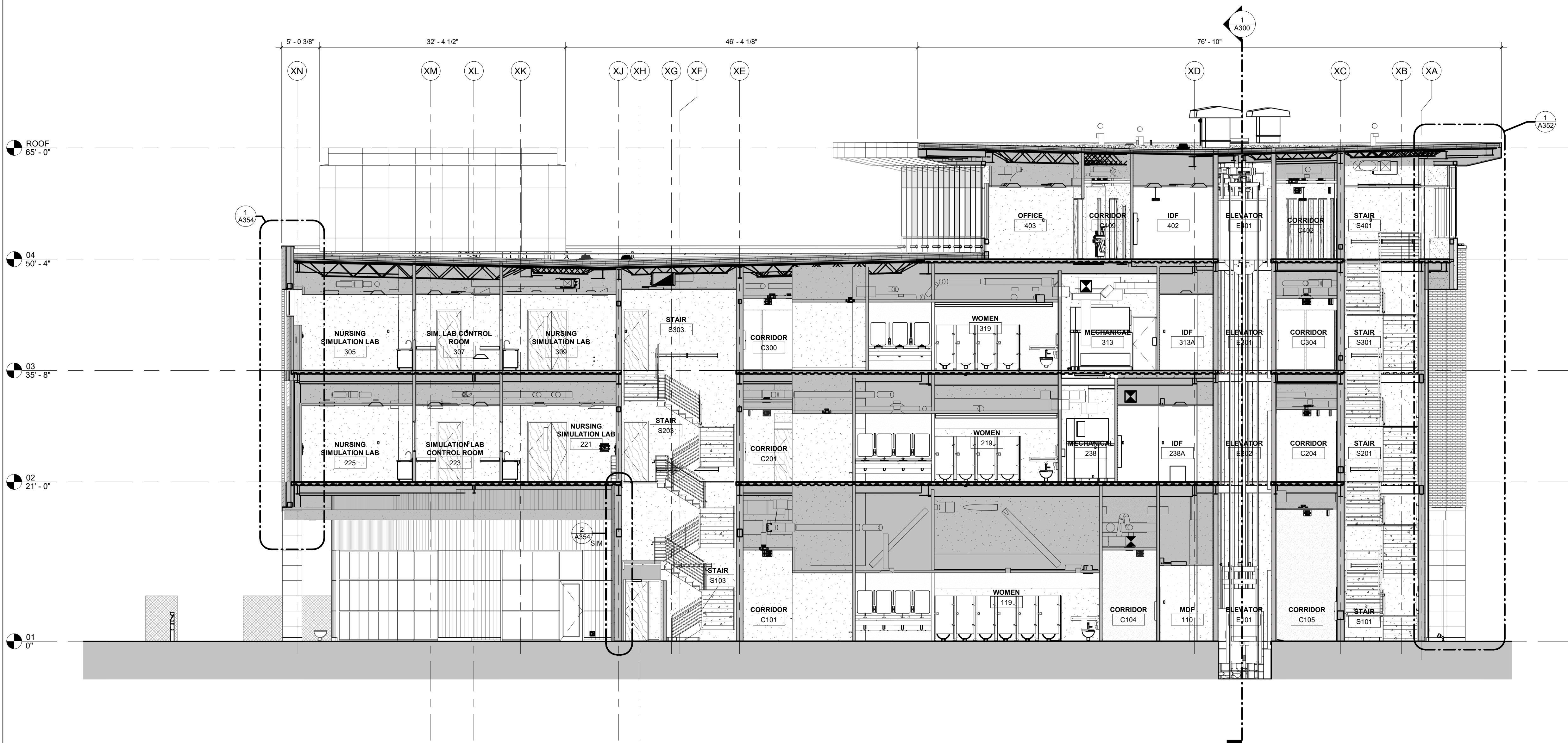


2 BUILDING SECTION - TRANSVERSE
1/8" = 1'-0" | RE:1/A101



1 BUILDING SECTION - TRANSVERSE
1/8" = 1'-0" | RE:1/A101

GENERAL NOTES

KEYNOTES

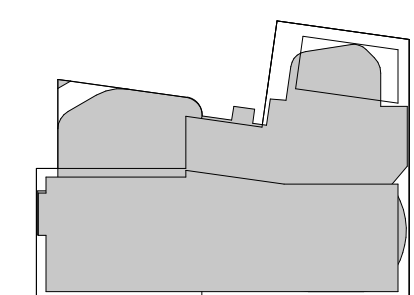
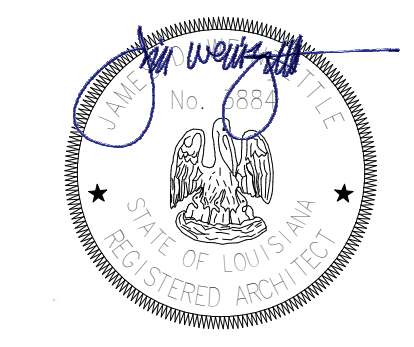
ASHE I BROUSSARD I WEINZETTLE
ARCHITECTS

CONSULTANTS
MonsieurBuller & Associates, LLC
CABDO Landscape Architecture, LLC
Fox Nease Engineering, LLC
Solas O'Brien
Mechanical Design Group, Inc.
Electrical Design Group, Inc.
Specialty Architects

ISSUE FOR BID
LOUISIANA STATE UNIVERSITY
ALEXANDRIA
DOWNTOWN HEALTH SERVICES CENTER
800 JACKSON ST.
ALEXANDRIA, LA 71301

PROJECT # 19-602-23-01
ARCH PROJECT # 2023.20 / 1031.00-23
SITE ID: NEW SITE CODE: 4-40-023
DATE OCTOBER 10, 2023
Ashe Broussard Weinzeite Architects, LLP
Tipton Associates APAC, A Joint Venture
301 Jackson Street, Suite 205
Alexandria, LA 71301

NO.	REVISION	DATE



BUILDING SECTIONS

A302