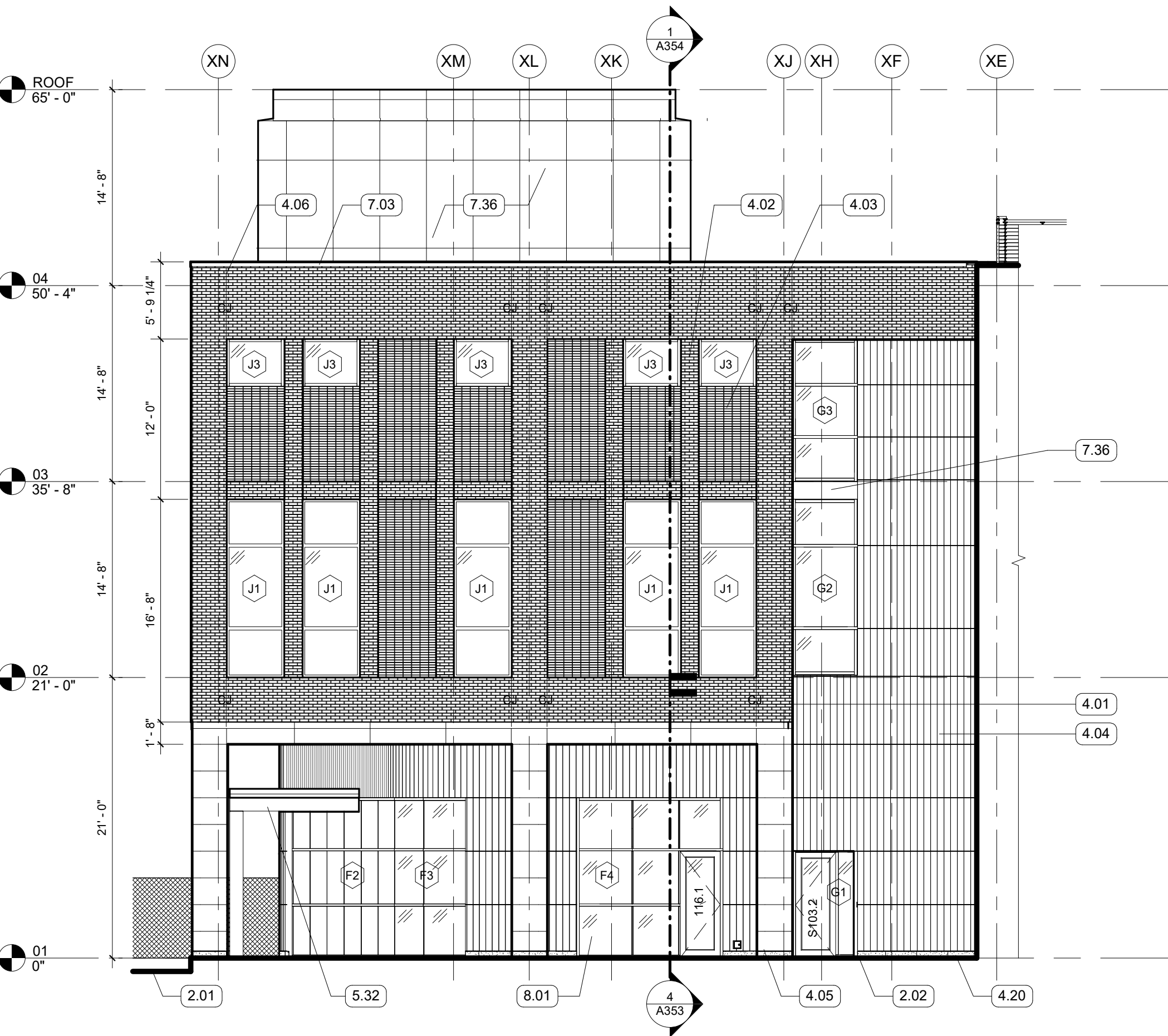
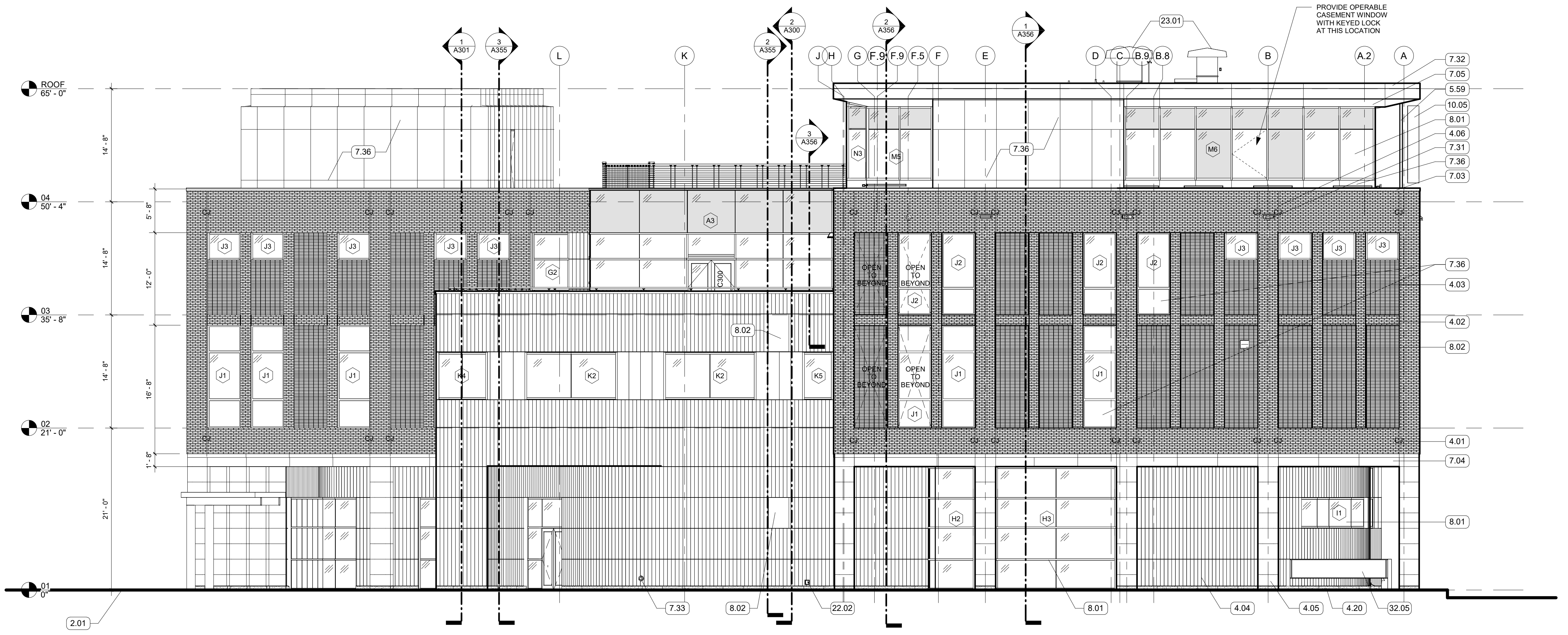


3 EXTERIOR ELEVATION - NORTH - 8TH STREET
1/8" = 1'-0" | RE-1/A101



1 ELEVATION-EXTERIOR-NORTH CENTER
1/8" = 1'-0" | RE-1/A101



2 EXTERIOR ELEVATION - WEST
1/8" = 1'-0" | RE-1/A101

GENERAL NOTES

KEYNOTES

- 2.01 APPROXIMATE LINE OF FINISHED GRADE. SEE CIVIL.
- 2.02 CONCRETE SIDEWALK.
- 4.01 FACE BRICK VENEER, RUNNING BOND.
- 4.02 4" RECESSED BRICK COURSE, RUNNING BOND, RECESS HORIZONTAL BANDS AN ADDITIONAL 1/2".
- 4.03 8" RECESSED BRICK COURSE, STACK BOND, PROJECT EVERY 3RD COURSE 1/2".
- 4.04 TERRA COTTA RAINSCREEN - STACK BOND, UNIT SIZE #1.
- 4.05 TERRA COTTA RAINSCREEN - COLUMN WRAP, UNIT SIZE #2.
- 4.06 MASONRY CONTROL JOINT.
- 4.08 PLASTER SOFFIT SYSTEM ON MTL. FRAMING - ALTERNATE NO. 2 REPLACES PLASTER SYSTEM WITH TERRA COTTA LARGE FORMAT SOFFIT PANELS.
- 4.20 CAST STONE PANEL.
- 5.32 ALTERNATE NO. 3 - ALUM. FRAMED CANOPY.
- 5.59 SIGNAGE SUPPORT.
- 7.03 PREFINISHED COPING FLASHING.
- 7.04 PREFINISHED CONCEALED FASTENER METAL SOFFIT WALL PANELS.
- 7.05 MCM PANEL SOFFIT.
- 7.31 ST STL SCUPPER.
- 7.32 GRAVEL STOP FASCIA.
- 7.33 DOWNSPOUT.
- 7.34 ROOF HATCH.
- 7.36 MCM PANEL.
- 8.01 ALUM. STOREFRONT, CURTAINWALL, OR WINDOW SYSTEM. SEE OPENING SCHEDULE.
- 8.02 MECHANICAL LOUVERS, PRE-FINISHED.
- 10.05 EXTERIOR DIMENSIONAL LOGO SIGNAGE.
- 22.02 WALL HYDRANT.
- 23.01 INTAKE HOOD.
- 23.04 CONDENSING UNIT. SEE MECH.
- 32.05 MONUMENT SIGN, SEE LANDSCAPE AND SPECS.

LEGEND

- VISION GLASS
- SPANDREL GLASS
- METAL PANEL
- CAST STONE PANEL
- MASONRY
- TERRACOTTA
- MASONRY CONTROL JOINT

ASHE BROUSSARD | WEINZETTLE ARCHITECTS

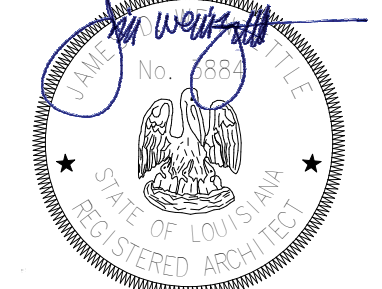
TIPTON ASSOCIATES

CONSULTANTS
Monsieur & Associates, LLC
CABDO Landscape Architecture, LLC
Fox Neust Engineering, LLC
Solas O'Brien
Mechanical Design Group, Inc.
Associated Design Group, Inc.
Specialty Architects

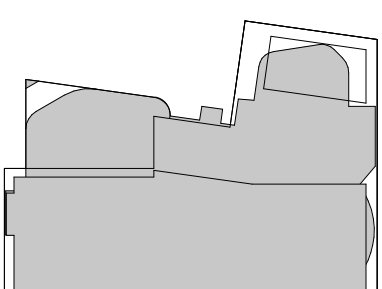
ISSUE FOR BID
LOUISIANA STATE UNIVERSITY
ALEXANDRIA
DOWNTOWN HEALTH SERVICES CENTER
800 JACKSON ST.
ALEXANDRIA, LA 71301

PROJECT # 19-602-23-01
ARCH PROJECT # 2023.20 / 1031.00-23
SITE ID: NEW SITE CODE: 4-40-023
DATE OCTOBER 10, 2023
Ashe Broussard Weinzettl Architects, LLP
Tipton Associates APAC, A Joint Venture
301 Jackson Street, Suite 205
Alexandria, LA 71301

NO. REVISION DATE



APPROVED FOR CONSTRUCTION
ARCHITECT



EXTERIOR ELEVATIONS

A201