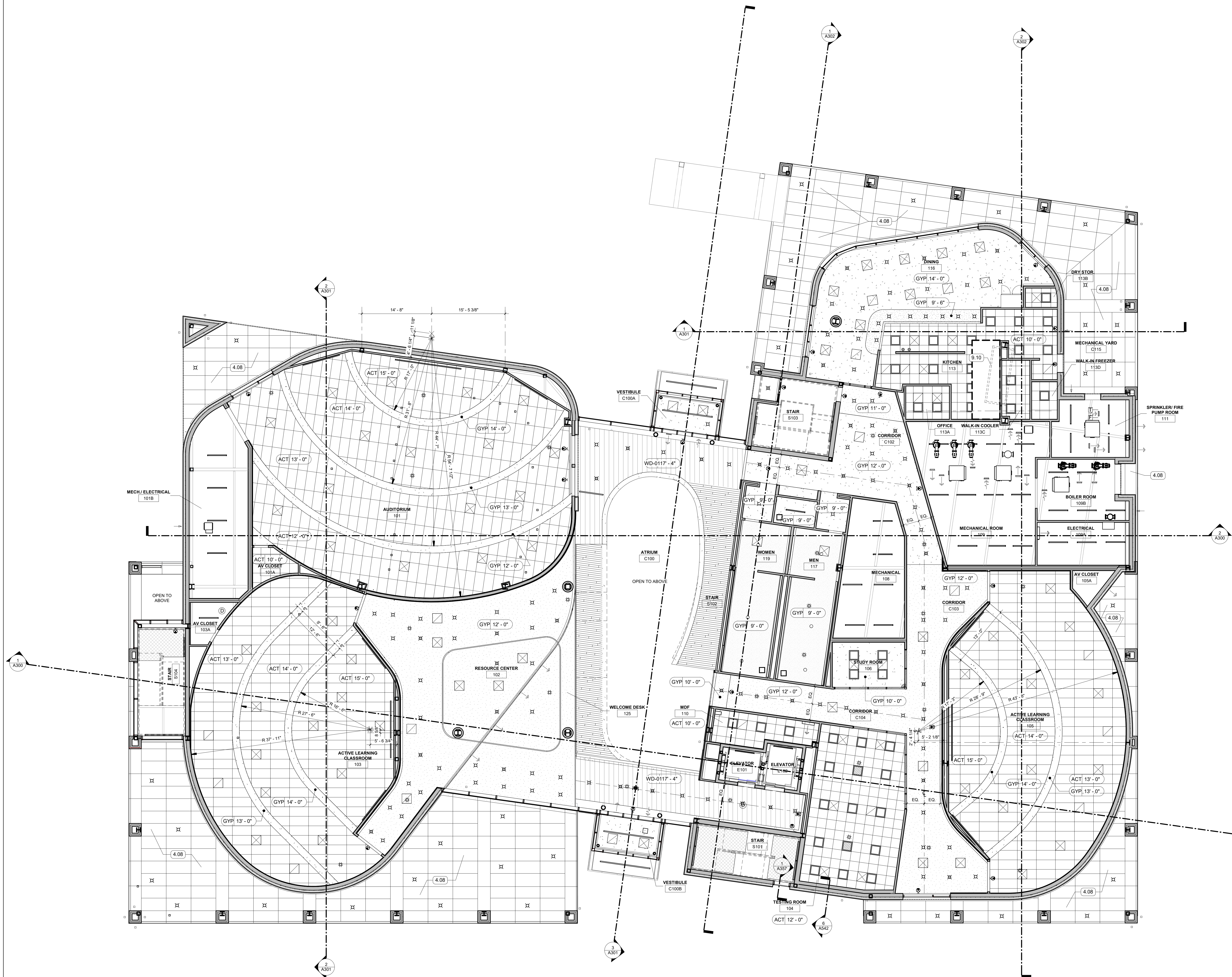


- KEYNOTES
- 4.08 PLASTER SOFFIT SYSTEM ON MTL. FRAMING -
ALTERNATE NO. 2 REPLACES PLASTER
SYSTEM WITH TERRA COTTA LARGE FORMAT
SOFFIT PANELS
- 9.10 2HR FIRE-RATED CHASE ABOVE CEILING FOR
HOOD EXHAUST



1 FIRST FLOOR REFLECTED CEILING PLAN

1/8" = 1'-0" | RE:1/A101



- LEGEND
- 2' x 2' SUSPENDED
ACOUSTICAL CEILING
- 2' x 4' SUSPENDED
ACOUSTICAL CEILING
- PAINTED DRYWALL
CEILING
- WOOD VENEER
ACOUSTICAL CEILING
- SUPPLY AIR DIFFUSER,
RE: MECH
- RETURN AIR GRILLE,
RE: MECH
- SMOKE DETECTOR,
RE: ELEC
- 2' x 2' LIGHT FIXTURE,
RE: ELEC
- SURFACE MOUNTED LIGHT
FIXTURE, RE: ELEC
- RECESSED DOWNLIGHT,
RE: ELEC
- EMERGENCY LIGHT,
RE: ELEC
- CEILING SENSOR,
RE: ELEC
- EXIT SIGN LIGHT
FIXTURE, RE: ELEC