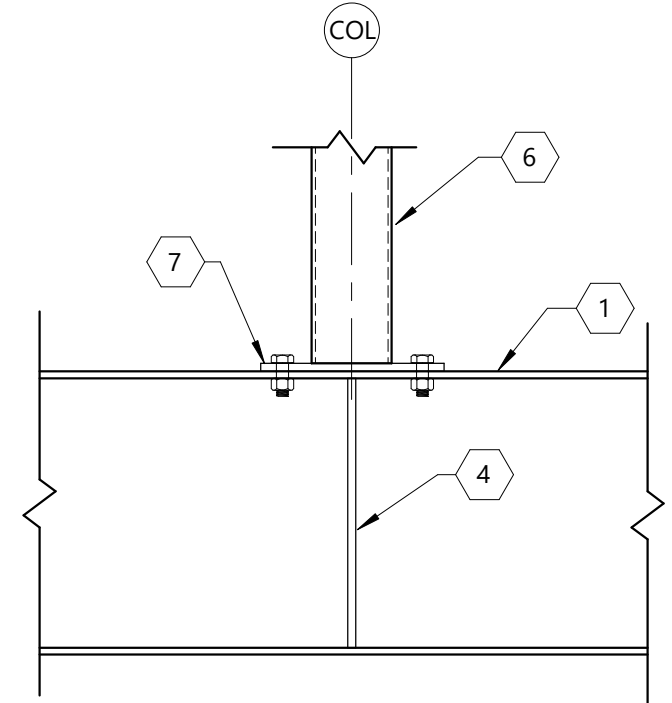
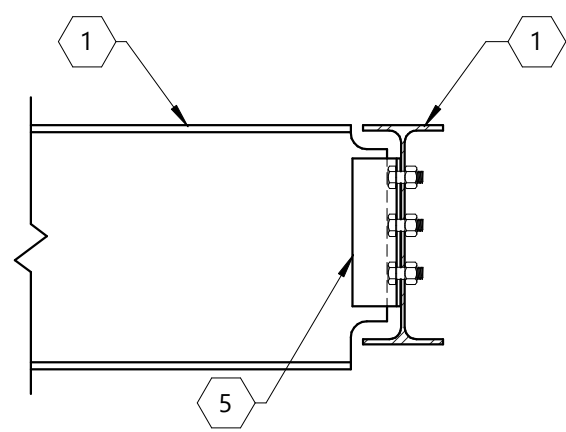


**1** Beam Over Column  
1" = 1'-0"

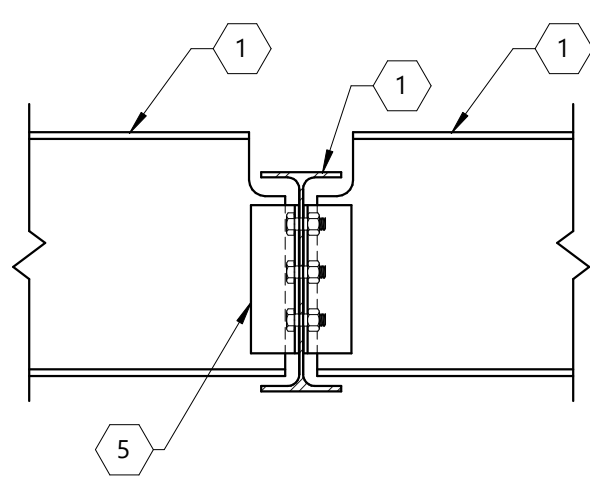
**NOTES:**  
AT LOCATIONS WHERE INTERSECTING BEAM IS PRESENT AT COLUMN LINE, FASTEN BEAM TO STIFFENER PLATE WITH MAX. ROWS OF 3/4" A325-TC BOLTS. EXTEND STIFFENER PLATE AS REQUIRED AND SET BOLTS 3 1/2" MAX. FROM BEAM CENTERLINE.  
AT LOCATIONS 14-XD AND 7-B-C AT 3RD FLOOR, INCREASE THICKNESS OF BASE PLATE TO 1-1/4" AND THICKNESS OF STIFFENER PLATE TO 1/2".



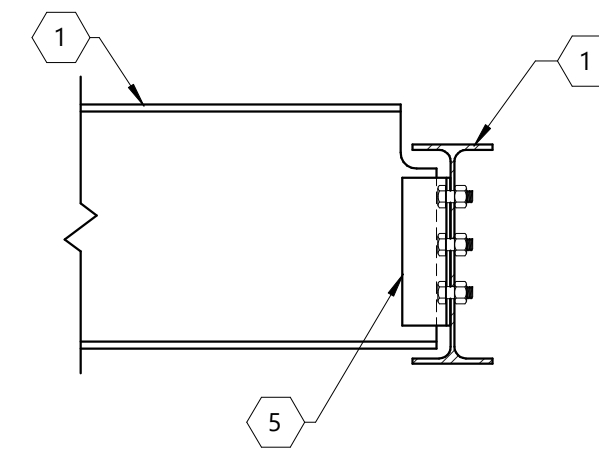
**2** Column On Beam Detail  
1" = 1'-0"



**3** Typical Beam To Beam  
1" = 1'-0"



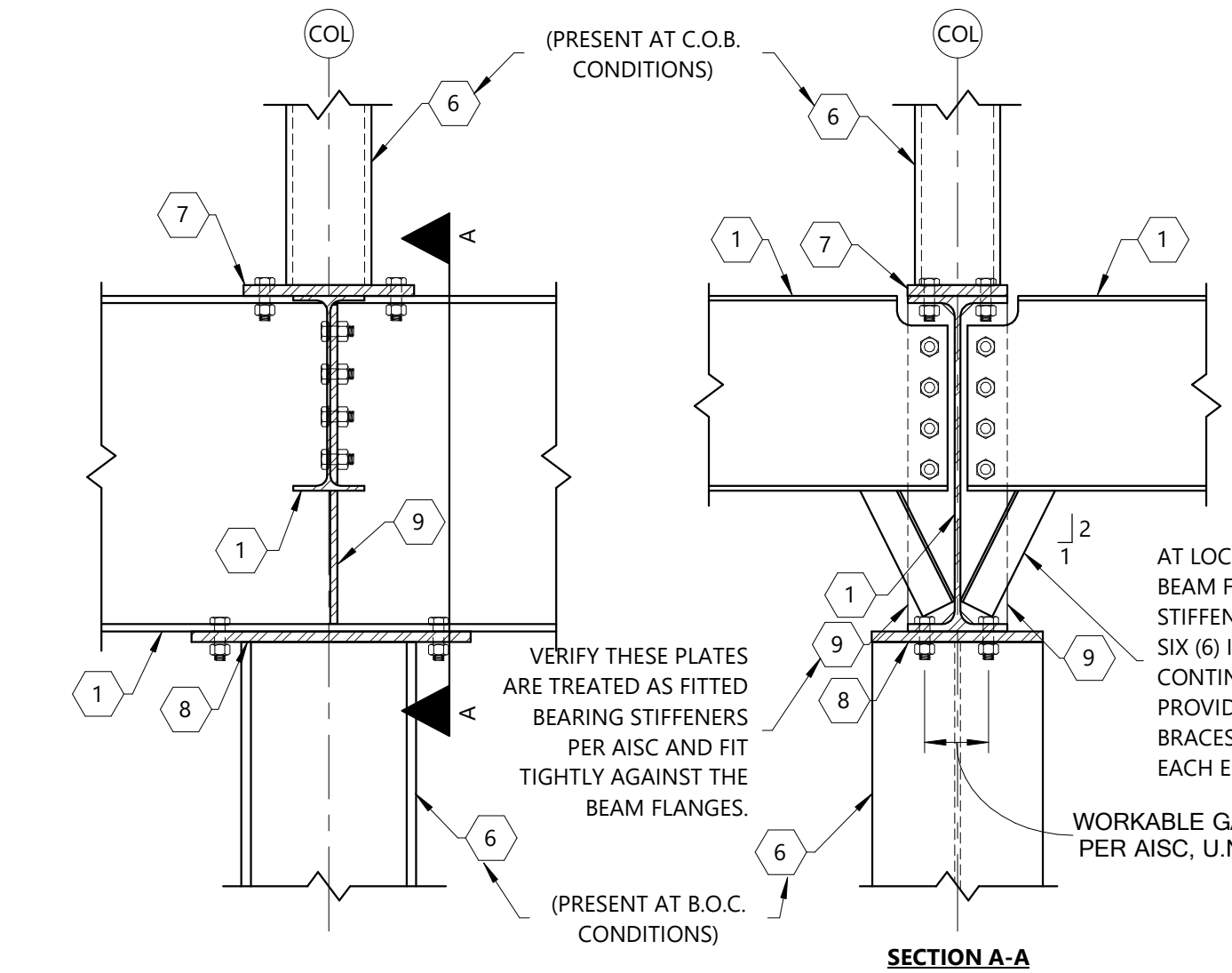
**4** Typical Interior Beam To Beam  
1" = 1'-0"



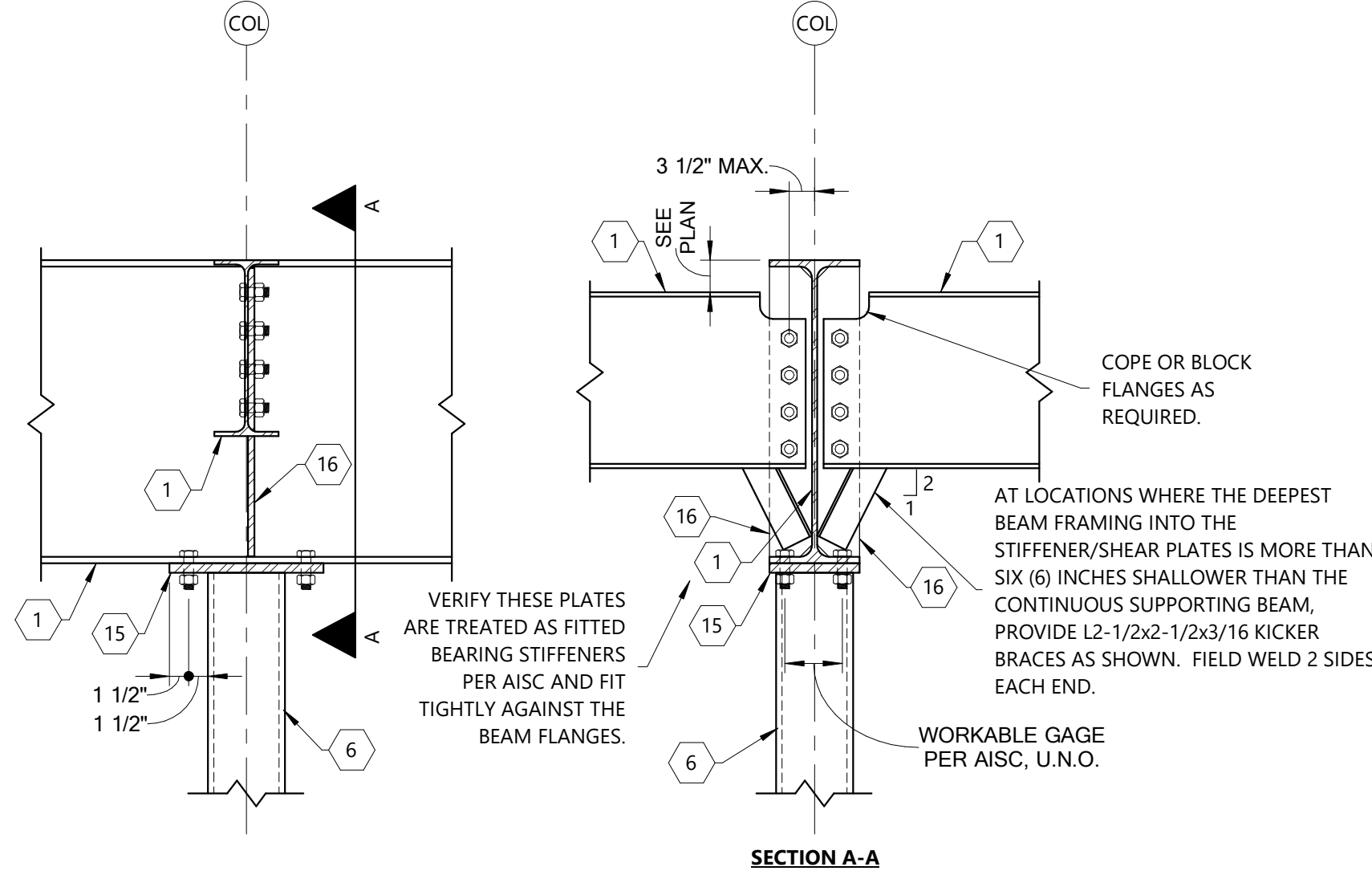
**5** Beam To Beam Connx.  
1" = 1'-0"

**Keynote Legend**

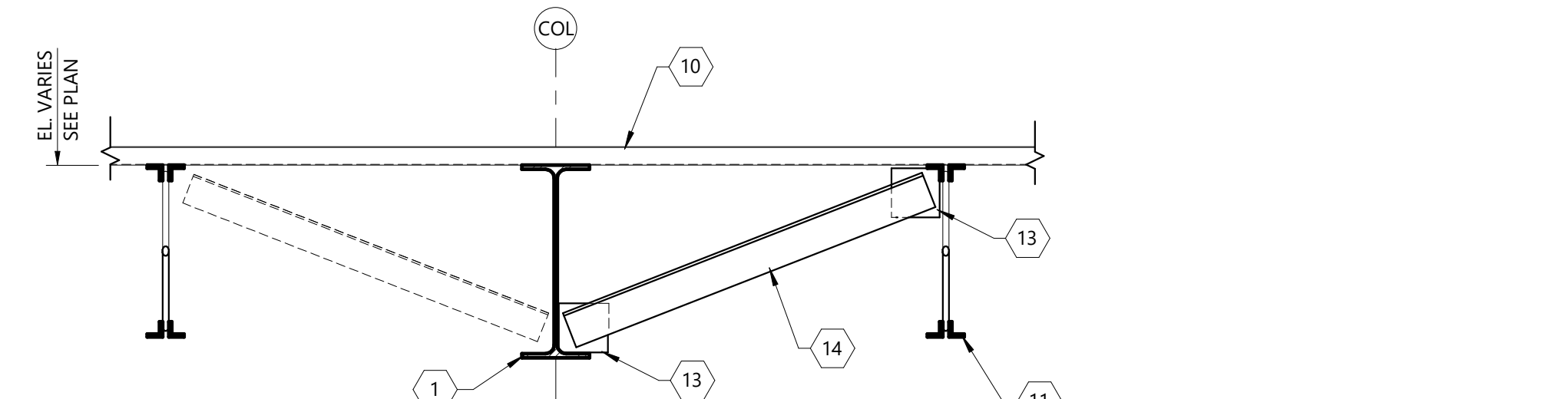
- STEEL BEAM - SEE PLAN FOR SIZE.
- 3/8" WEB PLATE CONNECTION EACH SIDE OF WEB.
- 3/4" CAP PLATE WITH (4)-3/4" DIA. BOLTS.
- 3/8" STIFFENER PLATE EACH SIDE OF BEAM WEB. WELD BOTH SIDES CONTINUOUS WITH 1/4" FILLET WELD.
- STANDARD DOUBLE ANGLE BEAM CONNECTION. RE: BEAM CONNECTION SCHEDULE AND DETAIL FOR INFORMATION.
- STEEL COLUMN - SEE PLAN FOR SIZE.
- 3/4" PLATE WITH (4)-3/4" DIA. A325-TC BOLTS.
- 1" THICK ASTM A572 GRADE 50 BEARING PLATE WITH (4)-3/4" DIA. A325 TENSION CONTROL BOLTS. SHOP WELD PLATE ALL AROUND TO COLUMN/POST. WIDTH OF PLATE SHALL BE WIDTH OF COLUMN PLUS 1" OR WIDTH OF BEAM, WHICHEVER IS GREATER.
- 5/8" STIFFENER/SHEAR ASTM A572 GRADE 50 PLATE. SHOP WELD BOTH SIDES CONTINUOUS TO BEAM WITH 5/16" FILLET WELD. PROVIDE MAXIMUM NUMBER OF 3/4" DIA. A325-TC BOLTS TO BEAM WEB. COPE BEAM FLANGE AS REQUIRED. ADJUST ANGLE OF PLATE AS REQUIRED AT SKEWED CONNECTIONS.
- GALVANIZED METAL ROOF DECK. RE: PLANS AND DECK FASTENER TABLE FOR INFORMATION.
- STEEL JOIST - SEE PLAN FOR SIZE.
- BRACE ALL INTERIOR BEAMS TO JOISTS WITH L2 1/2x2 1/2x3/16 BRACE. BRACE AT EVERY OTHER JOIST LINE. STAGGER BRACES SIDE TO SIDE OF EACH BRACED JOIST LINE. FIELD WELD EACH END 3 SIDES.
- 4"x4"x1/4" GUSSET PLATE. FIELD WELD TO BEAM OR JOIST TOP CHORD AT PANEL POINT LOCATION. PROVIDE CONTINUOUS 1/8" FILLET WELD ON ALL SIDES OF GUSSET PLATE.
- BRACE ALL ROOF BEAMS PARALLEL TO JOIST WITH L2 1/2x2 1/2x3/16 AT 8'-0" O.C. MAX. SPACING. FIELD WELD EACH END 3 SIDES TO GUSSET PLATE. STAGGER BRACE SIDE TO SIDE OF BEAM AT INTERIOR BEAMS.
- 3/4" THICK BEARING PLATE WITH (4)-3/4" DIA. A325 TENSION CONTROL BOLTS. INCREASE THICKNESS OF PLATE TO 1" AT BEAMS WITH DEPTH GREATER THAN 18 INCHES. OR AT COLUMNS WITH A WIDTH GREATER THAN 6 INCHES. SHOP WELD PLATE ALL AROUND TO COLUMN/POST WITH 1/4" FILLET WELD.
- 1/2" STIFFENER/SHEAR PLATE. SHOP WELD BOTH SIDES CONTINUOUS TO BEAM WITH 1/4" FILLET WELD. INCREASE THICKNESS OF PLATE TO 1" AND SIZE OF WELD TO 5/16" FOR BEAMS WITH DEPTH GREATER THAN 18 INCHES. OR AT COLUMNS WITH A WIDTH GREATER THAN 6 INCHES. PROVIDE MAXIMUM NUMBER OF 3/4" DIA. A325-TC BOLTS TO BEAM WEB. COPE BEAM FLANGE AS REQUIRED.
- CONTINUOUS UPLIFT BRIDGING BY JOIST SUPPLIER AS REQUIRED.
- 3/8" FULL-DEPTH STIFFENERS. SET STIFFENER LOCATION AT HORIZ. LEGS ON SHELF ANGLES. WELD ALL AROUND WITH 1/4" FILLET WELD.
- HSS BEAM - SEE PLAN FOR SIZE AND ELEVATION.
- L3x3x5/16 SHELF AT TOP AND BOTTOM OF HSS BEAM. SHOP WELD ALL AROUND TO COLUMN WITH 1/4" FILLET WELD.
- CONTINUOUS HSS COLLECTOR MEMBERS BETWEEN ALL JOISTS AT BEAMS INDICATED ON PLAN. USE HSS5x2 1/2x1/8 AT K-JOISTS AND HSS5x1/8 AT LH-JOISTS. PROVIDE 9" GAP BETWEEN COLLECTORS AT EACH JOIST. CENTER COLLECTOR MEMBER ON BEAM. HSS COLLECTOR MEMBER IS NOT REQUIRED BETWEEN JOISTS WITH CENTER-TO-CENTER SPACING OF 1'-6" OR LESS.
- FASTEN DECK TO HSS COLLECTORS WITH 5/8" DIA. PUDDLE WELDS AT 6" O.C. MAX. PROVIDE 16 GA. WELD WASHERS WITH 3/8" DIA. HOLES AT 24 GA. DECK.
- L3x3x5/16 CONNECTION ANGLE. SHOP WELD ALL AROUND TO COLUMN AND FIELD WELD 3 SIDES TO BEAM. USE 1/4" FILLET WELD. LENGTH OF ANGLES SHALL BE WIDTH OF BEAM OR COL. (WHICHEVER IS NARROWER) MINUS 2". CENTER EACH ANGLE ABOUT BEAM WIDTH. USE 5/16" THICK BENT PLATE WITH SAME DIMENSIONS AT SLOPED BEAM CONDITIONS.
- 3/8" THICK CAP PLATE SHOP WELDED ALL AROUND TO COLUMN AND FIELD WELDED 3 SIDES TO EACH BEAM WITH FLARE BEVEL GROOVE WELD OR 1/4" FILLET WELD.



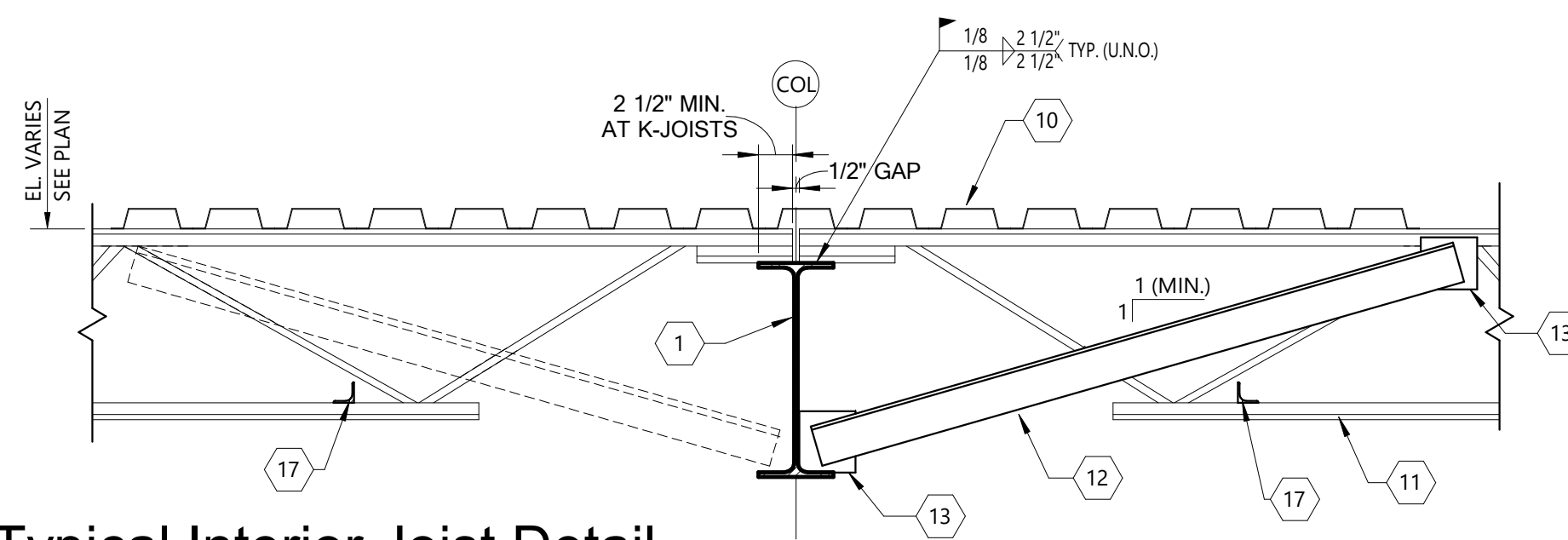
**6** Beam Over Column Connection/Column On Beam  
1" = 1'-0"



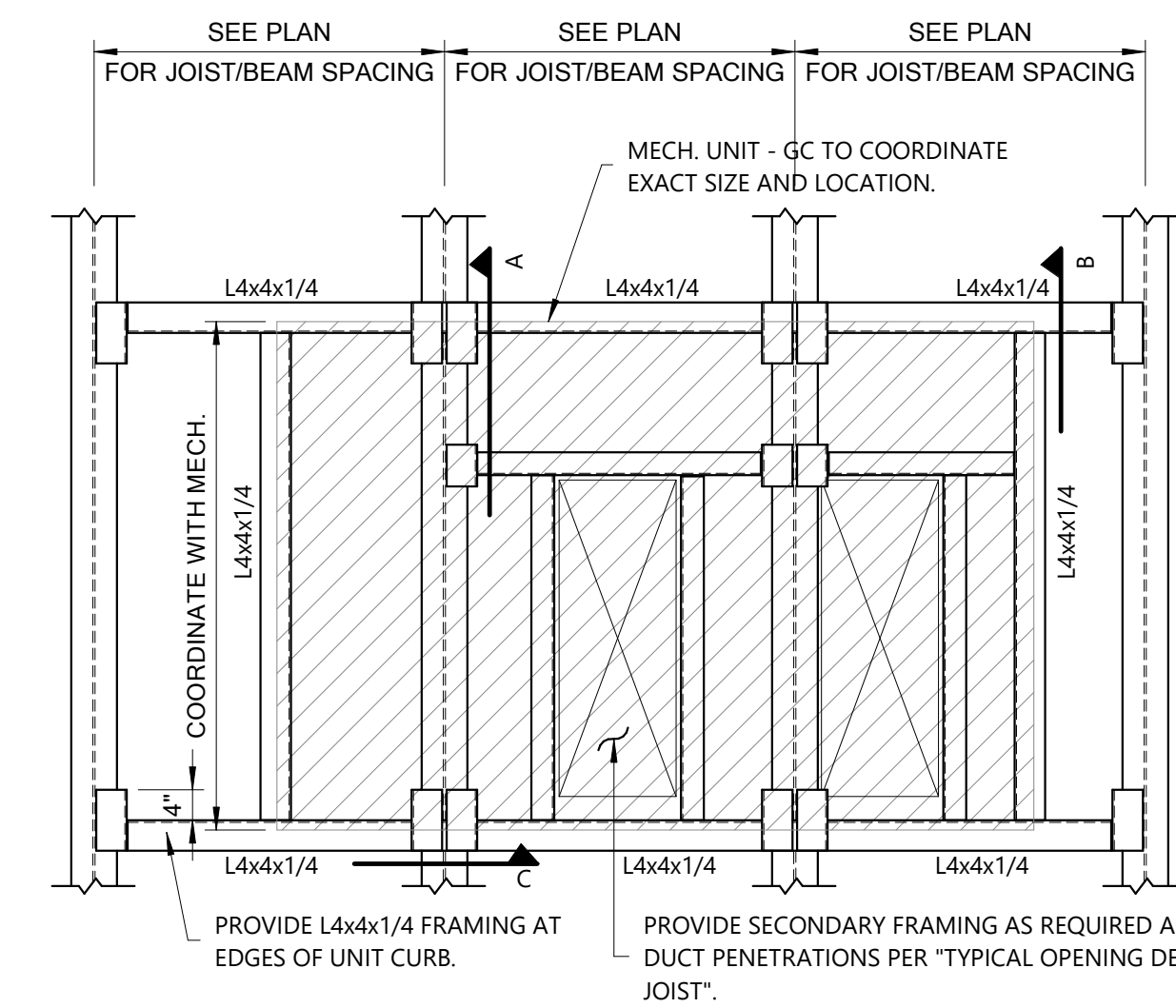
**7** Beam Over Column Connection  
1" = 1'-0"



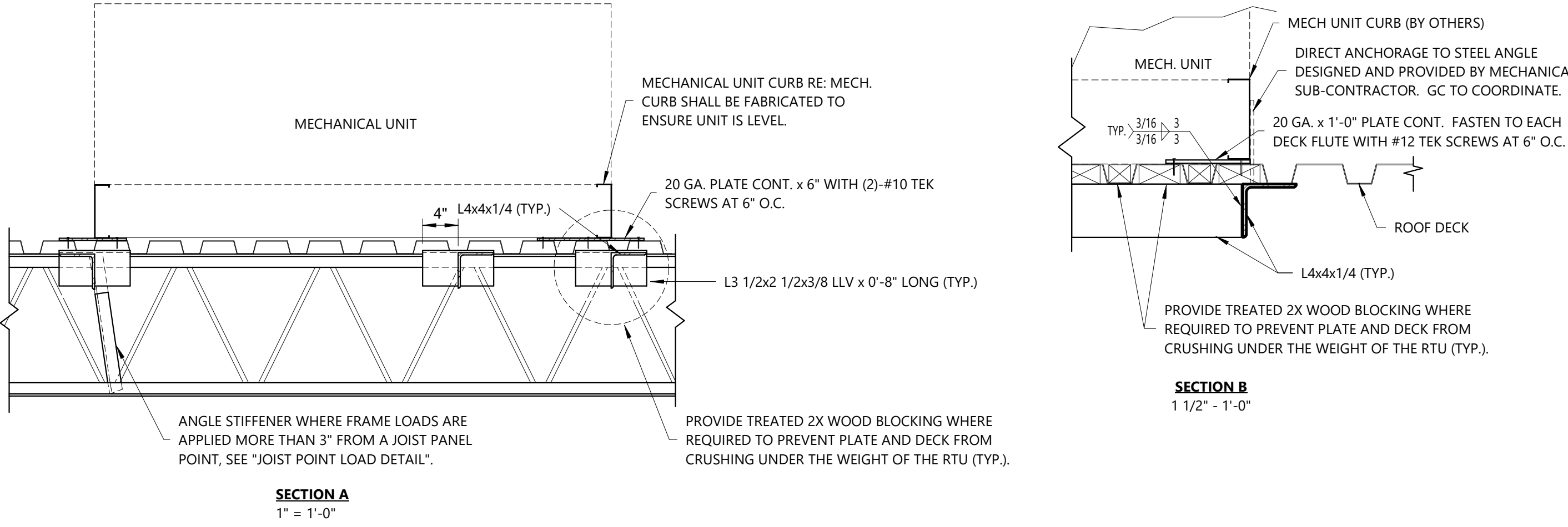
**8** Interior Beam At Bracing  
1" = 1'-0"



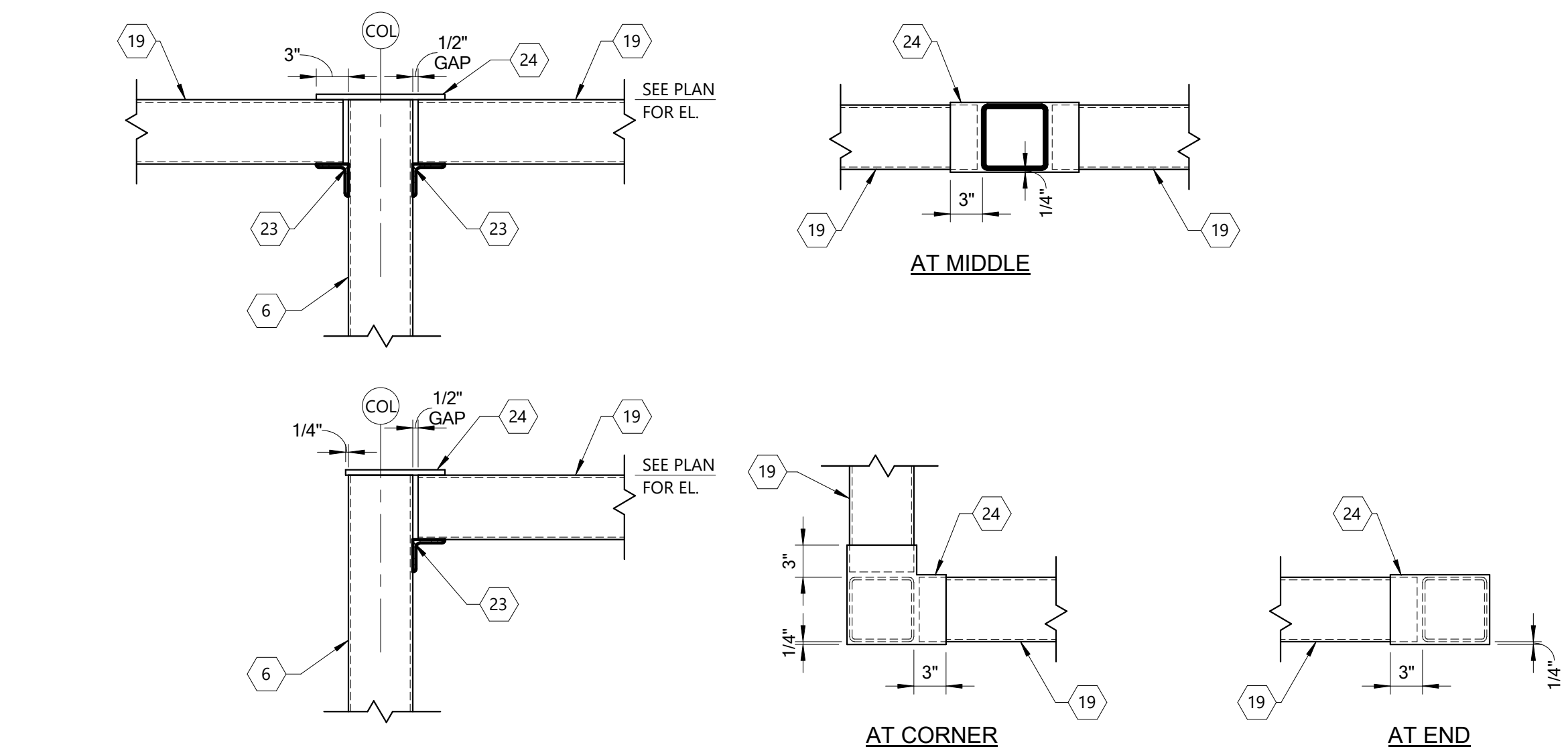
**9** Typical Interior Joist Detail  
1" = 1'-0"



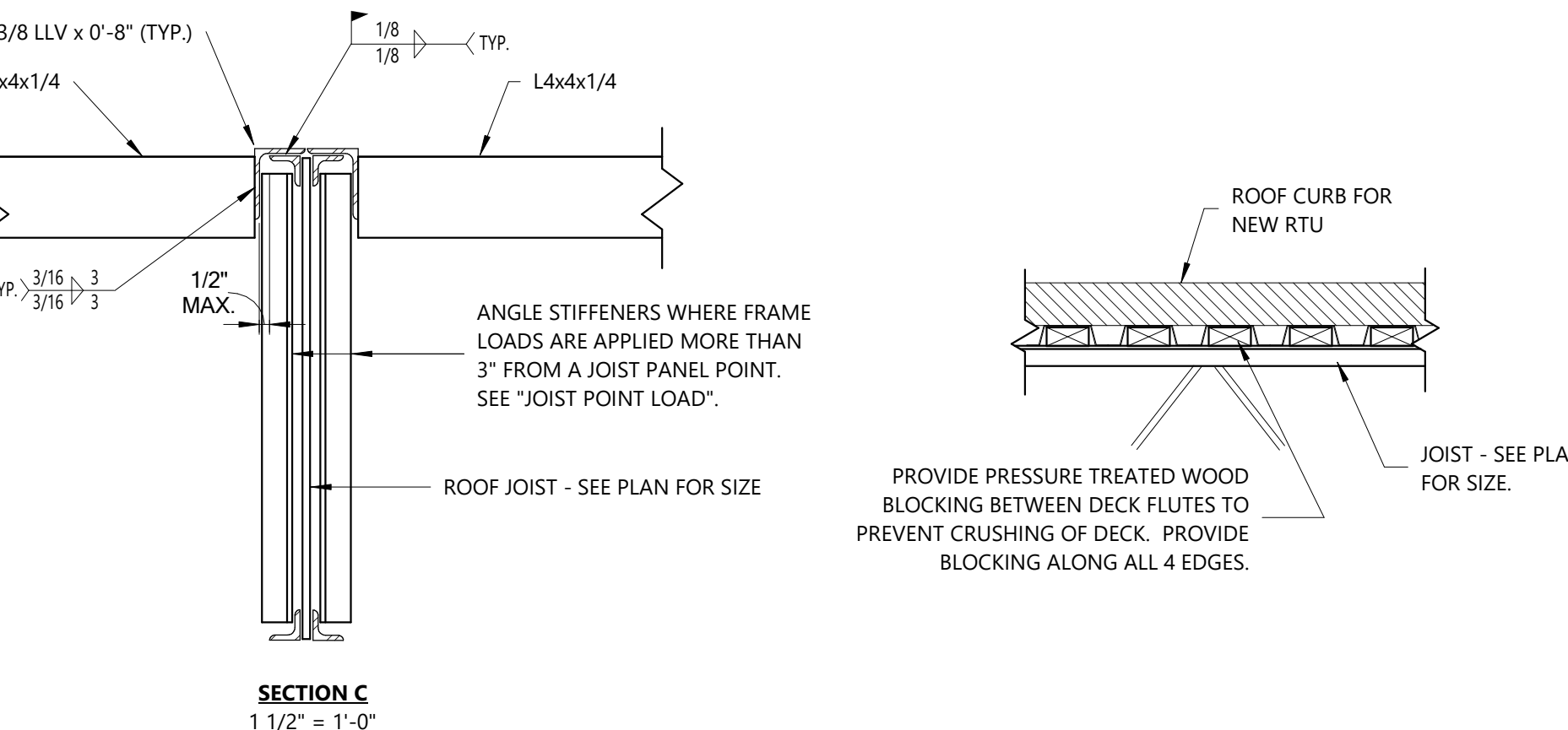
**10** Typ. Mech. Support Unit  
1/2" = 1'-0"



**11** Collector HSS At Joist  
1 1/2" = 1'-0"



**12** HSS Beam To Column At Top  
1" = 1'-0"



**13** HSS Beam To WF Col.  
1 1/2" = 1'-0"