

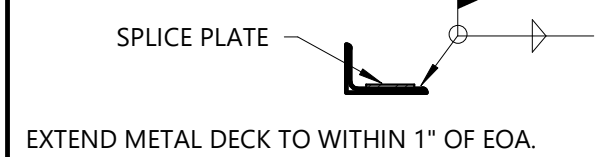
1 Typical Edge Angle/Bent Plate At Roof  
1" = 1'-0"

NOTES:

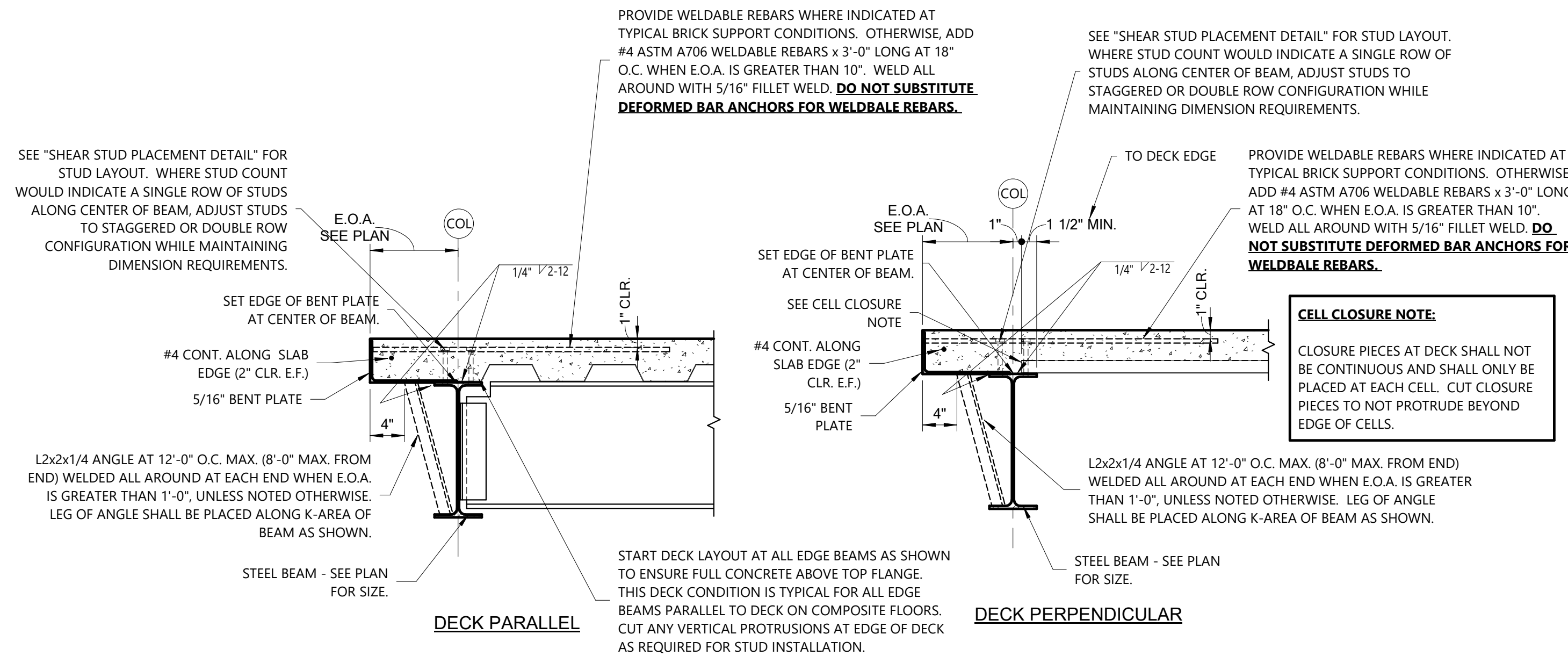
PROVIDE CONTINUOUS EDGE MEMBER (ANGLE OR BENT PLATE) AT ALL ROOF EDGES, UNLESS NOTED OTHERWISE WHERE E.O.D. DIMENSION IS INDICATED.

MINIMUM THICKNESS OF EDGE MEMBER IS 1/4".

PROVIDE 4"x2"x1/4" SPlice PLATE AT ALL JOINTS IN THE EDGE MEMBER. CENTER SPlice PLATE ON JOINT AND WELD BOTH SIDES.



EXTEND METAL DECK TO WITHIN 1" OF E.O.A.

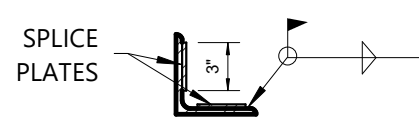


NOTES:

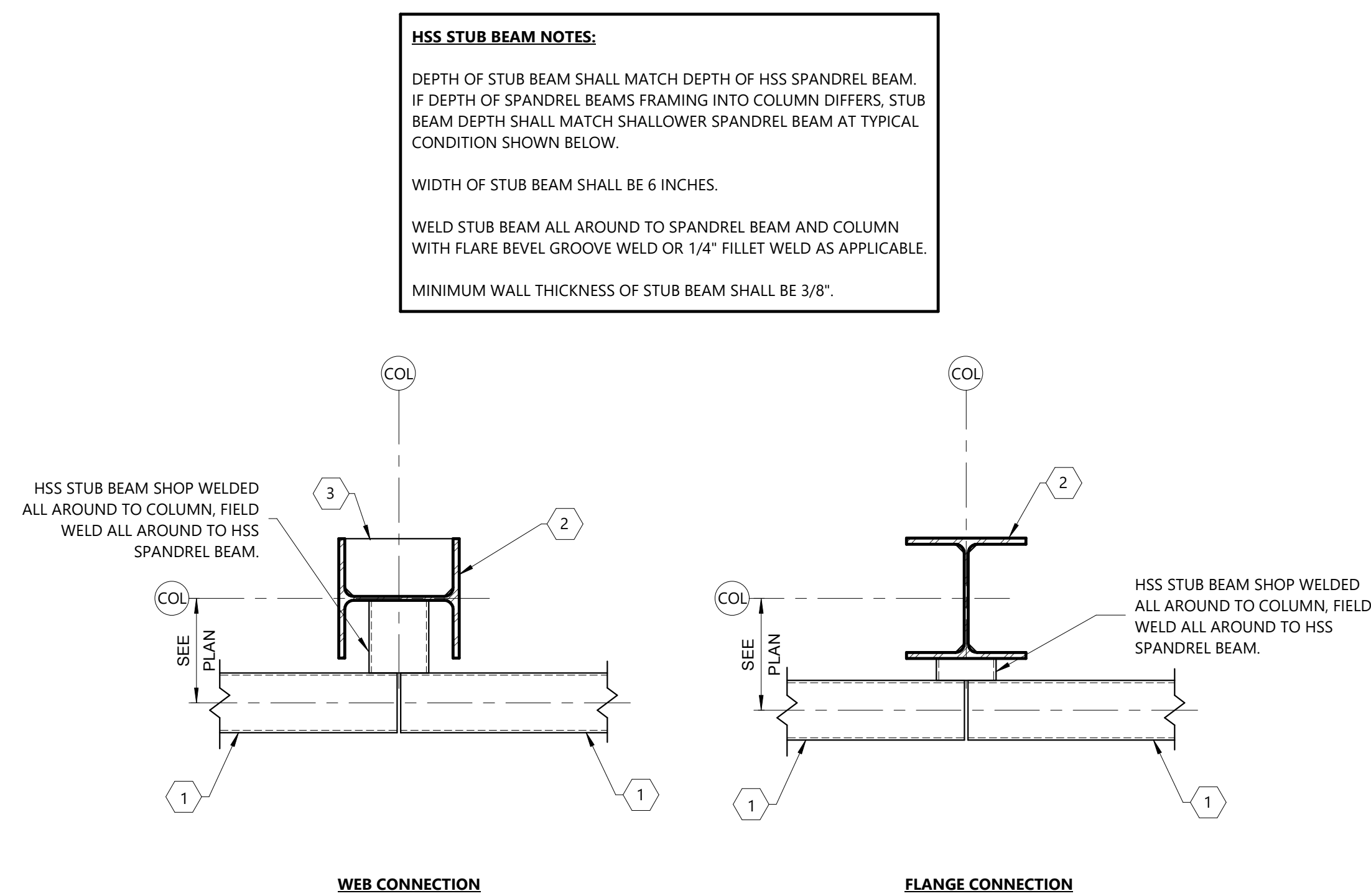
PROVIDE CONTINUOUS EDGE MEMBER (ANGLE OR L-SHAPED BENT PLATE) AT ALL FLOOR EDGES. MINIMUM THICKNESS OF EDGE MEMBER IS 5/16". THE VERTICAL LEG DIMENSION SHALL MATCH THE FLOOR THICKNESS. PROVIDE GROOVE WELD ALONG VERTICAL LEGS AT ALL CORNERS AND INTERSECTIONS.

PROVIDE FULL PENETRATION WELDED SPICES AT ALL CORNER CONDITIONS.

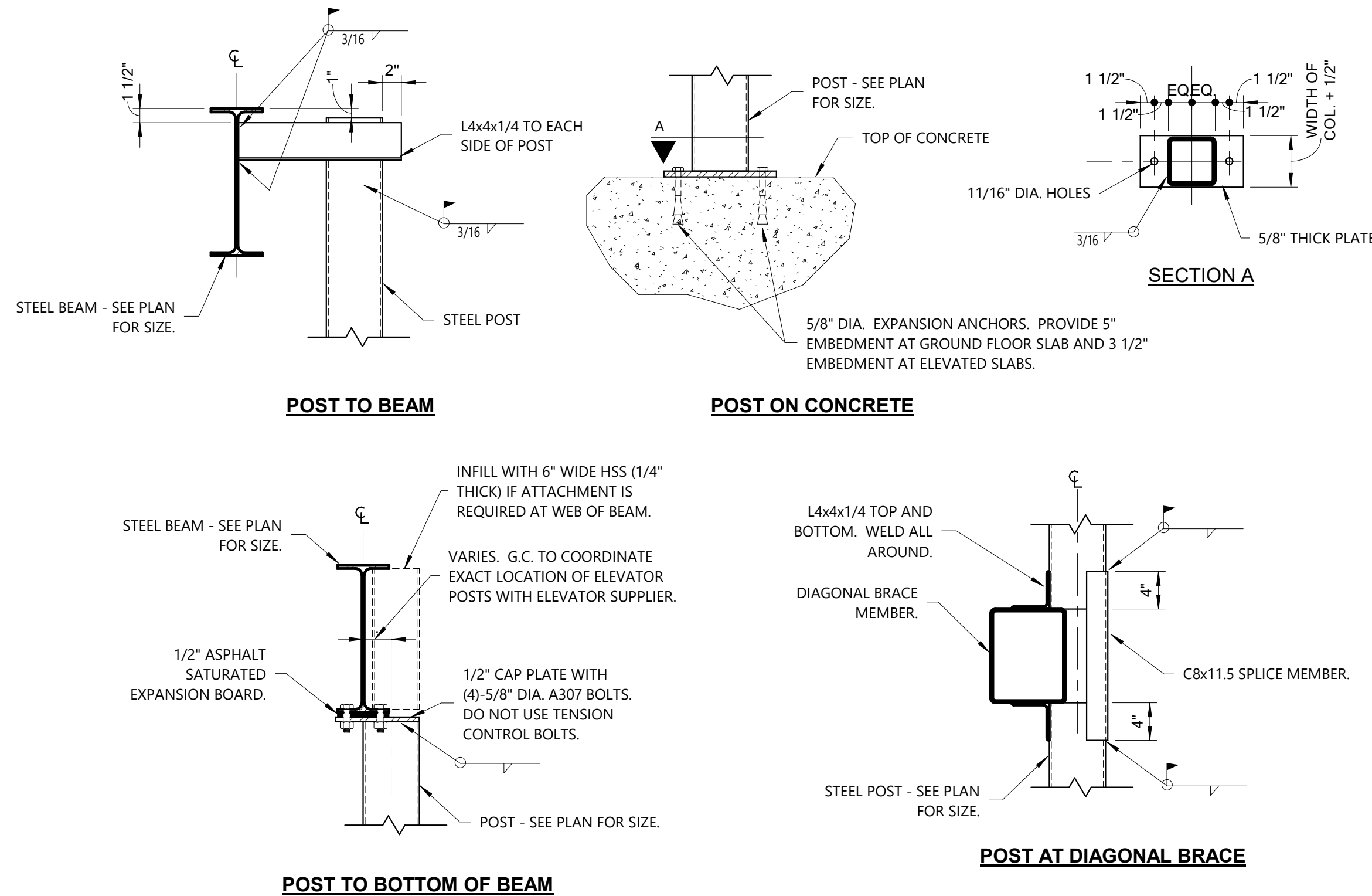
PROVIDE 4"x3"x1/4" SPICE PLATES AT ALL BUTT JOINTS IN THE EDGE MEMBER WITH 1/2" MAX. GAP. CENTER SPICE PLATES ON JOINT AND WELD BOTH SIDES ALL AROUND.



2 Typical Slab Edge Detail With Composite Beams  
1" = 1'-0"



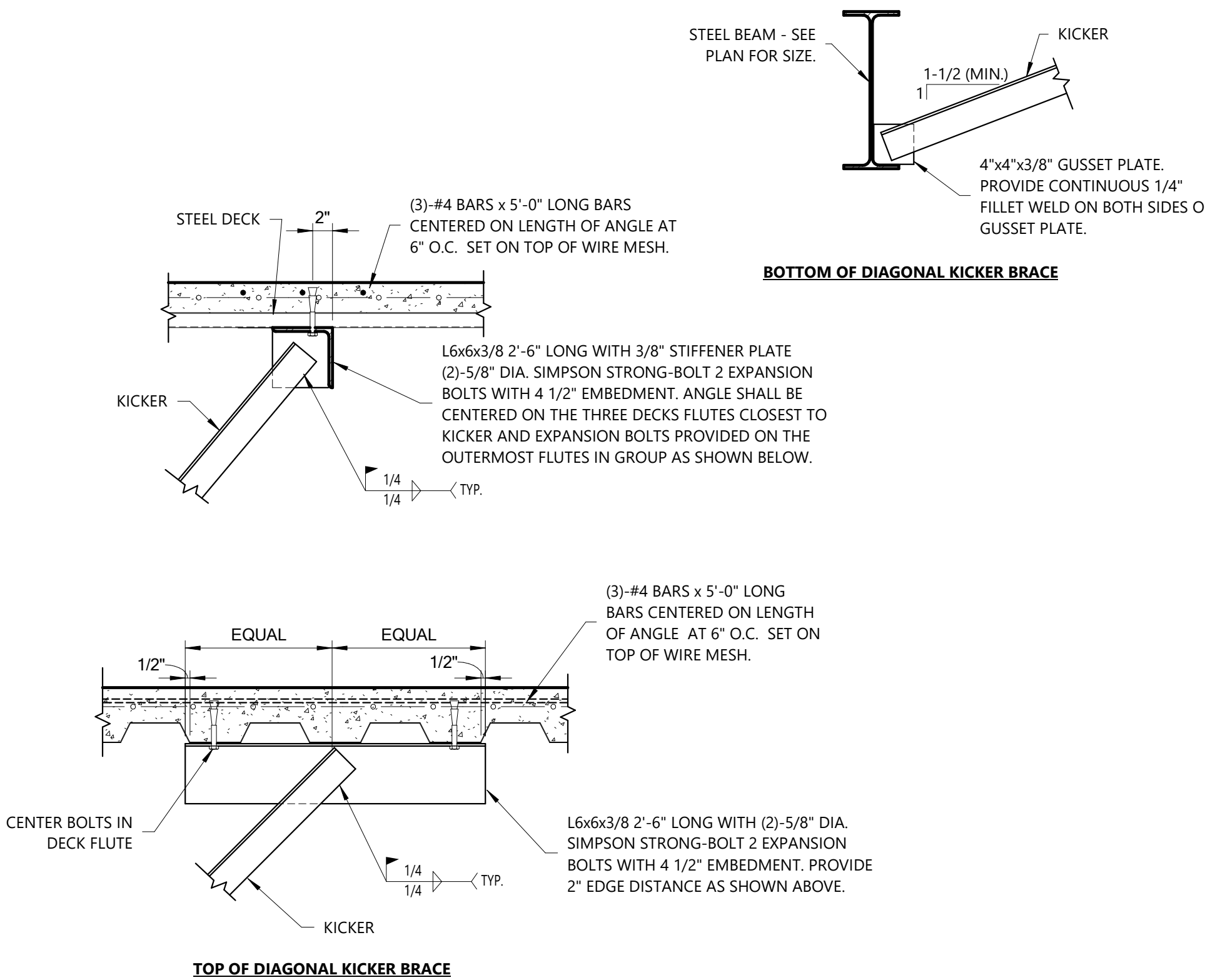
3 Spandrel To WF Column Connection  
1" = 1'-0"



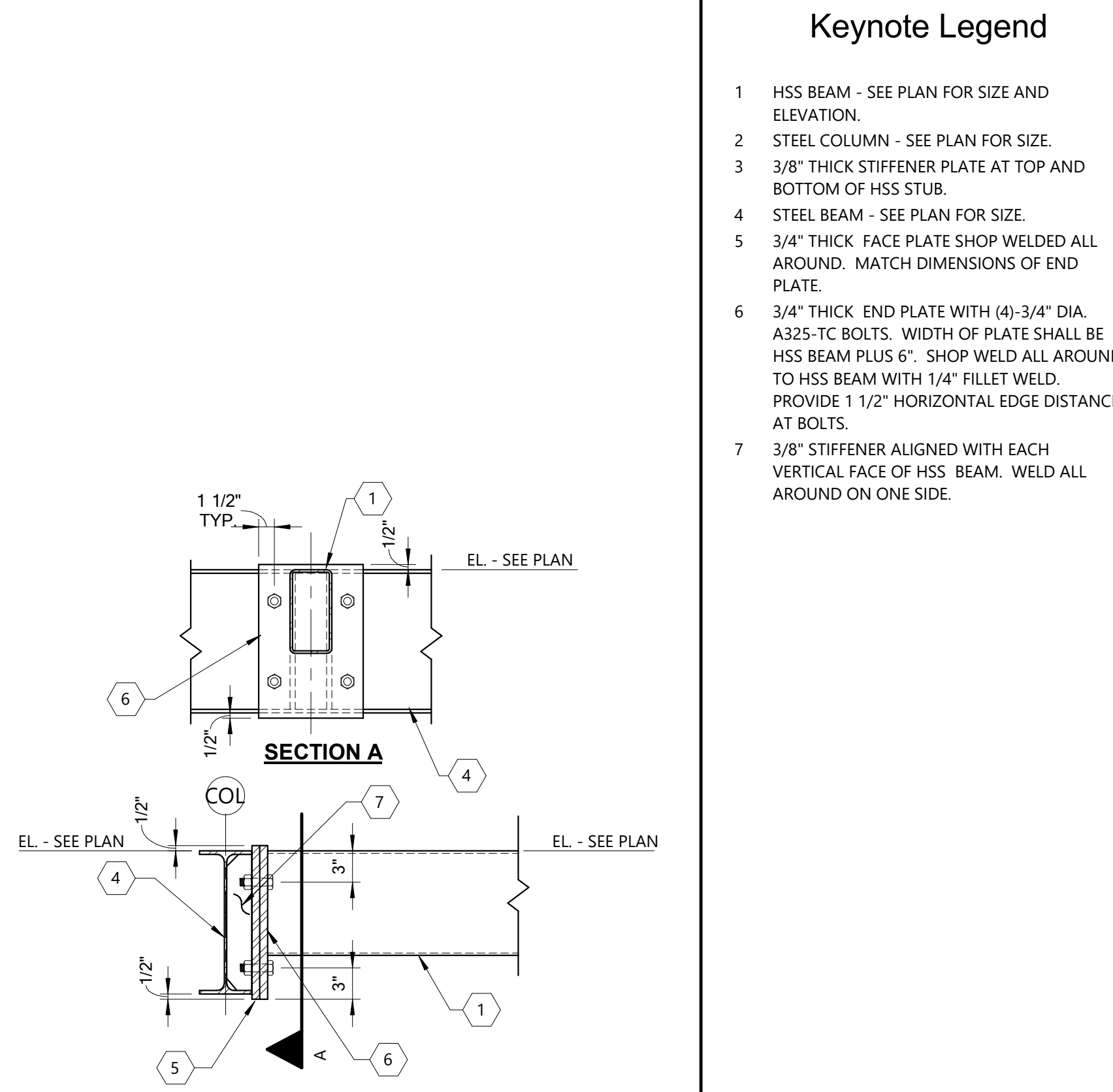
4 Elevator Post Details  
1" = 1'-0"

NOTE: ELEVATOR STEEL DIMENSIONS

ELEVATOR SUPPLIER SHALL PROVIDE SUBMITTAL TO ARCHITECT/ENGINEER FOR REVIEW AND APPROVAL INDICATING REQUIRED LOCATIONS OF ALL ELEVATOR POSTS RELATIVE TO GRIDLINES AT ELEVATOR SHAFT. SUBMITTAL SHALL ALSO INDICATE REQUIRED LOCATION OF HOIST BEAM RELATIVE TO GRIDLINES AT ELEVATOR SHAFT AND PLANNED ELEVATION OF HOIST BEAM ABOVE FINISHED FLOOR. ELEVATOR POSTS, HOIST BEAM, AND BEAMS WHICH SUPPORT ELEVATOR POSTS AND HOIST BEAMS SHALL NOT BE APPROVED FOR FABRICATION UNTIL THIS SUBMITTAL IS REVIEWED AND APPROVED.



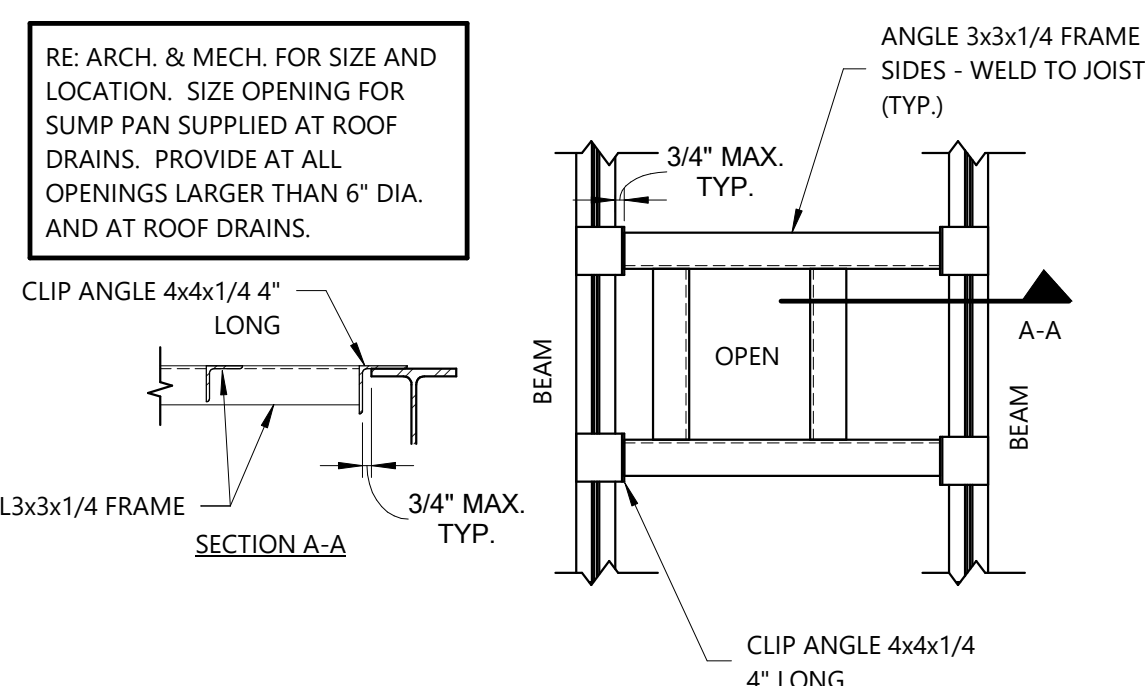
5 Typical Diagonal Brace To Deck  
1" = 1'-0"



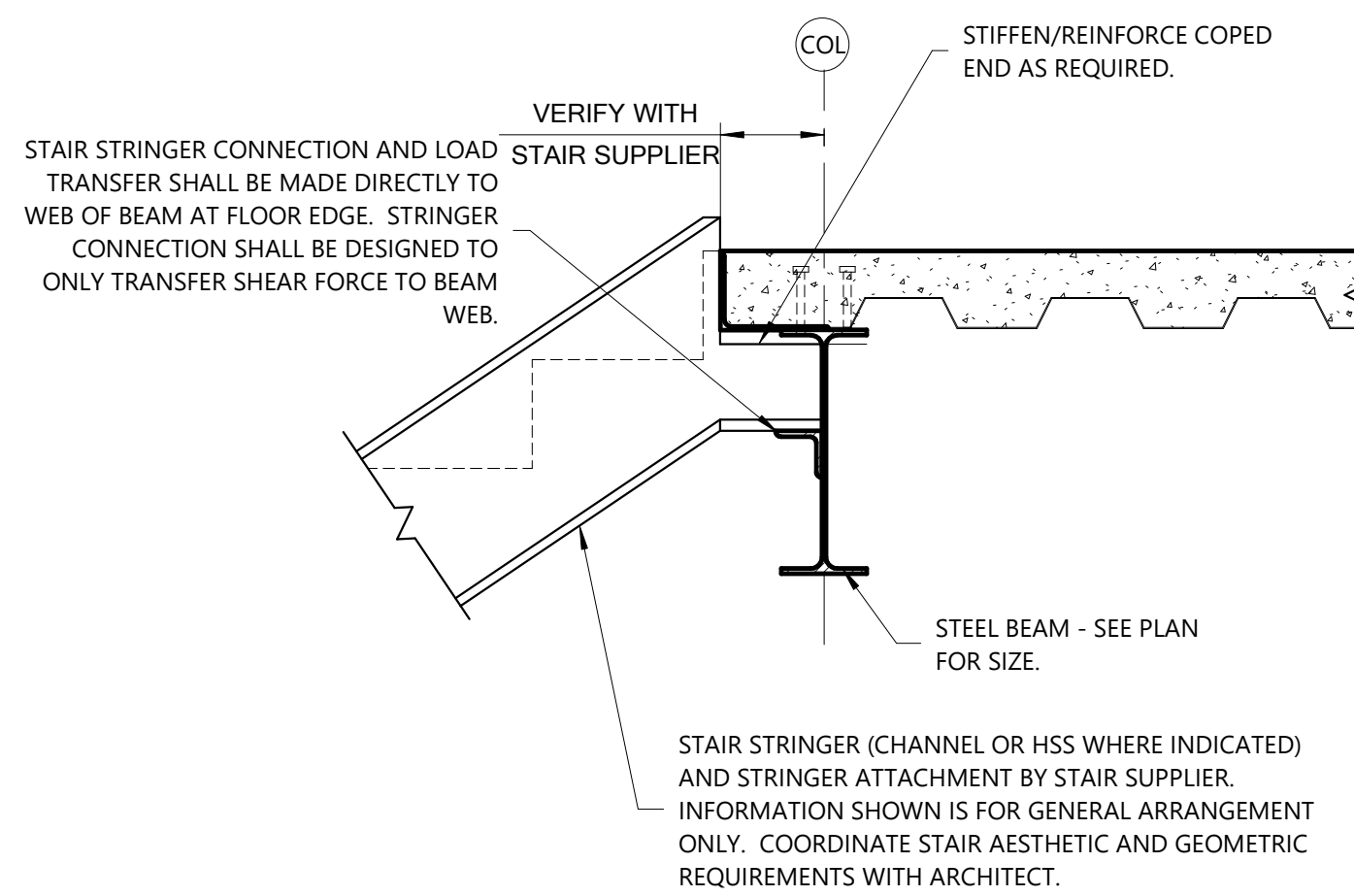
6 HSS Member To WF Beam  
1" = 1'-0"

Keynote Legend

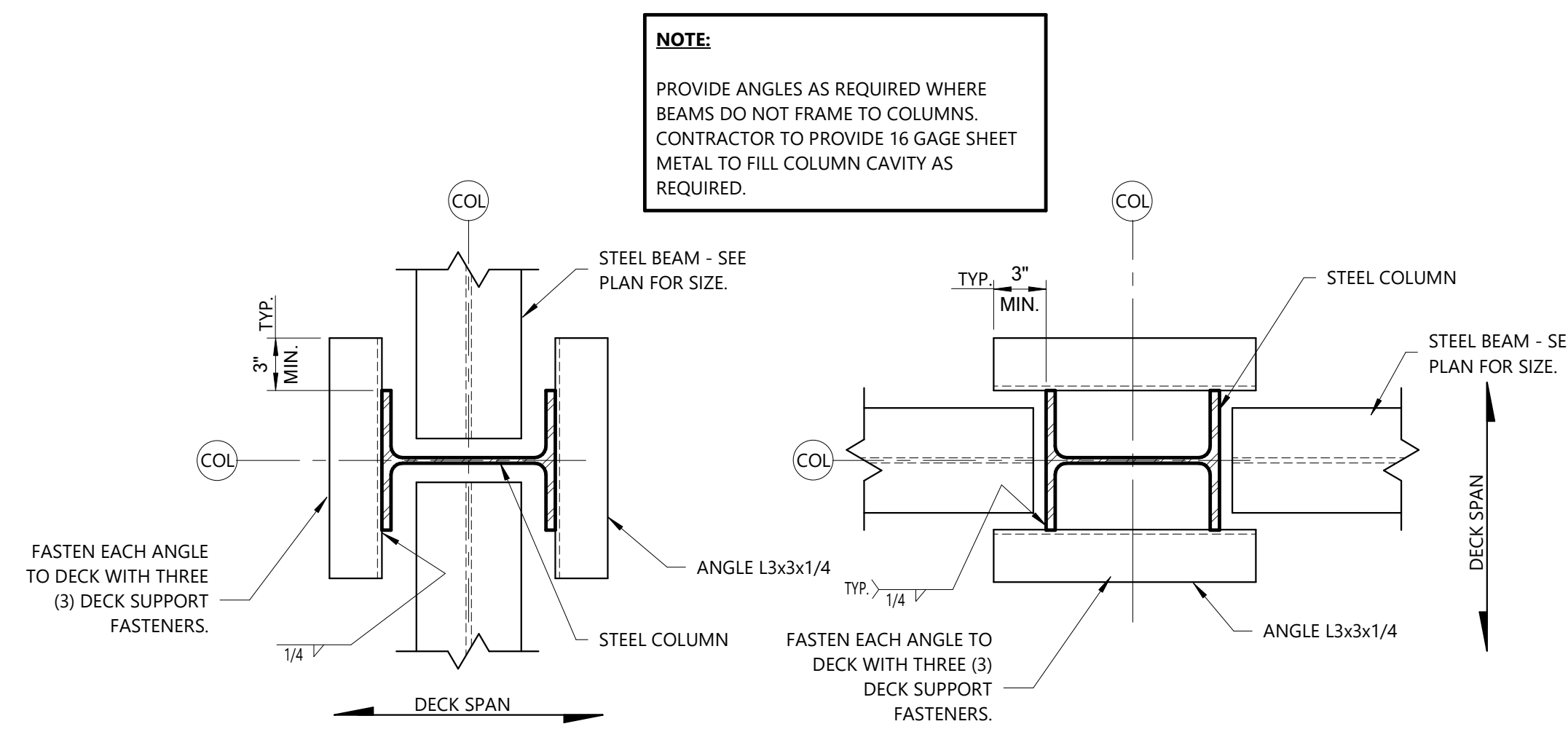
- 1 HSS BEAM - SEE PLAN FOR SIZE AND ELEVATION.
- 2 STEEL COLUMN - SEE PLAN FOR SIZE.
- 3 3/8" THICK STIFFENER PLATE AT TOP AND BOTTOM OF HSS STUB.
- 4 STEEL BEAM - SEE PLAN FOR SIZE.
- 5 3/4" THICK FACE PLATE SHOP WELDED ALL AROUND. MATCH DIMENSIONS OF END PLATE.
- 6 3/4" THICK END PLATE WITH (4)-3/4" DIA. A325-TC BOLTS. WIDTH OF PLATE SHALL BE HSS BEAM PLUS 6". SHOP WELD ALL AROUND TO HSS BEAM WITH 1/4" FILLET WELD. PROVIDE 1 1/2" HORIZONTAL EDGE DISTANCE AT BOLTS.
- 7 3/8" STIFFENER ALIGNED WITH EACH VERTICAL FACE OF HSS BEAM. WELD ALL AROUND ON ONE SIDE.



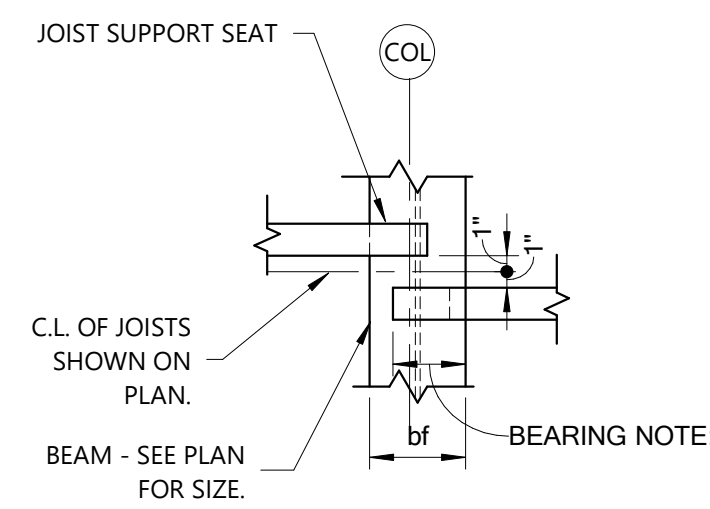
7 Typical Opening Detail At Roof  
3/4" = 1'-0"



8 Stair Stringer Detail  
1" = 1'-0"



9 Metal Deck Support At WF Column  
1 1/2" = 1'-0"



WHERE JOISTS ARE SHOWN ON PLAN TO ALIGN BUT BE ± MIN. BRG. LENGTH ± 1/2", STAGGER JOISTS AS SHOWN HERE.

10 Staggered Joist Plan  
1" = 1'-0"

