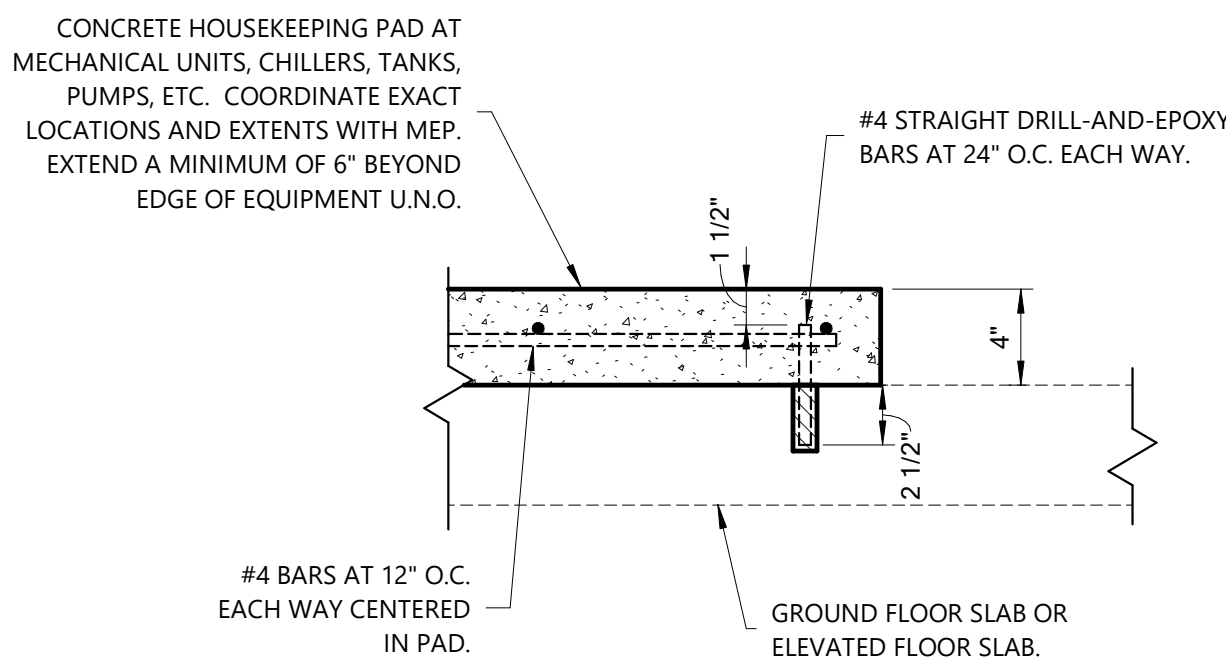
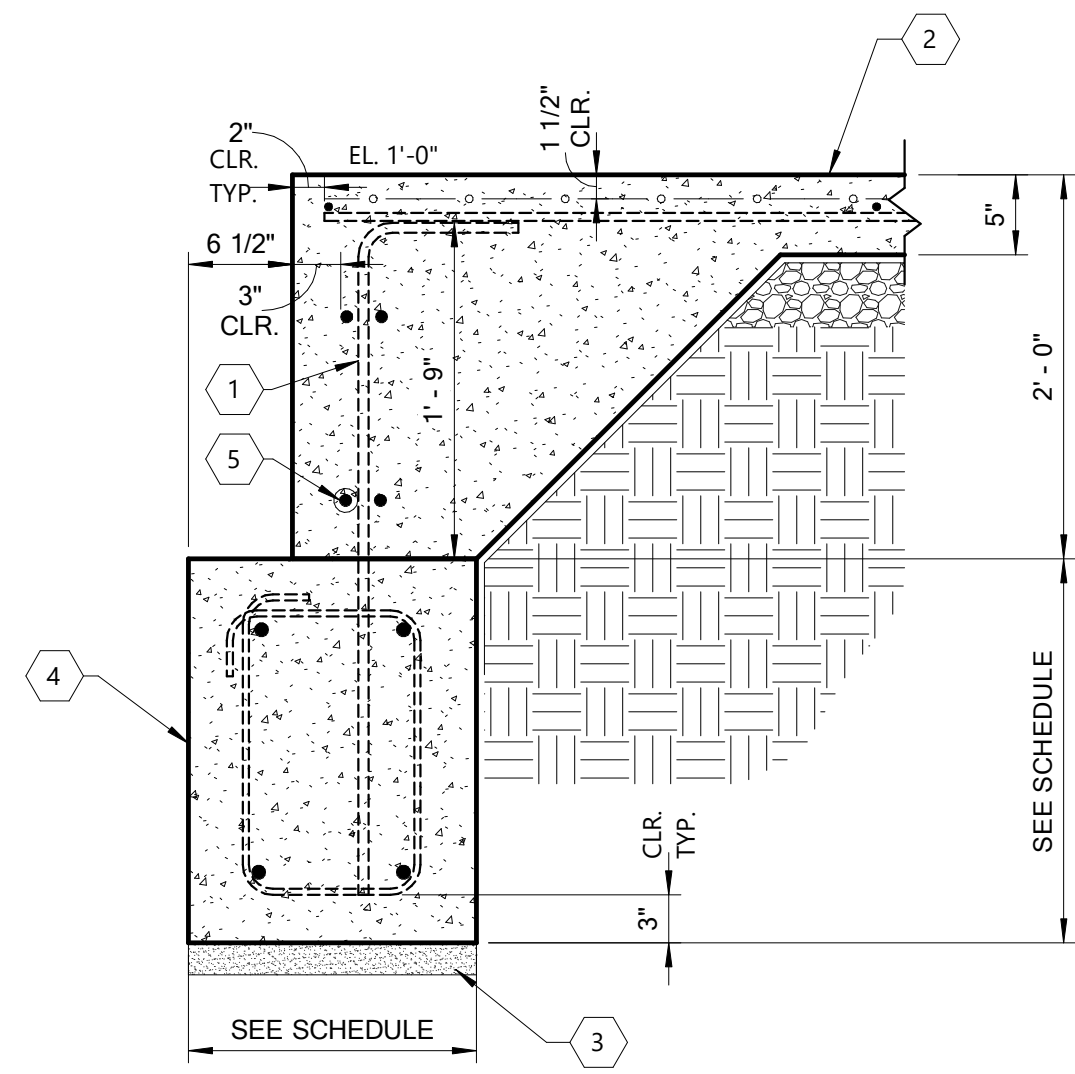


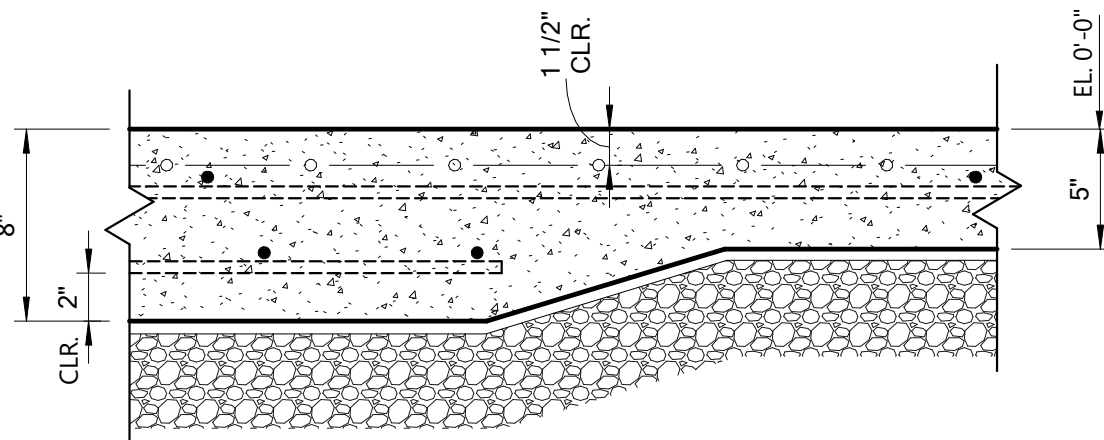
1 Vertical Penetration In Grade Beam
1" = 1'-0"



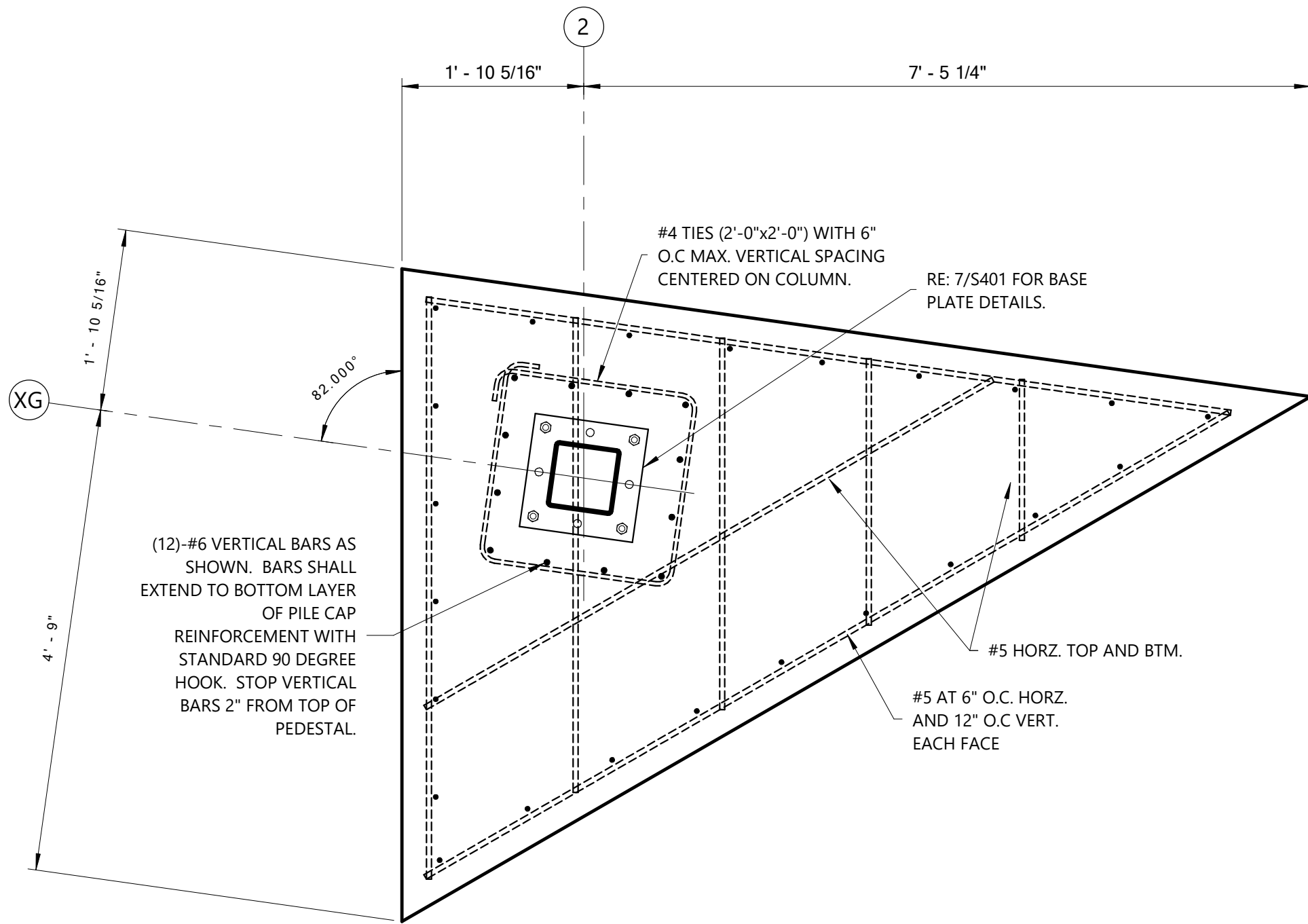
2 Housekeeping Pad
1 1/2" = 1'-0"



3 Exterior Grade Beam At Elevated Slab
1" = 1'-0"



4 Thickened Slab Detail
1 1/2" = 1'-0"



5 Pedestal Plan View At Column XG-2
3/4" = 1'-0"

Keynote Legend

- 1 PROVIDE #5 L-BAR (a=10", b= 42") DOWELS AT 12" O.C. MAX. ALONG TOP OF GRADE BEAM.
- 2 CONCRETE SLAB-ON-GRADE. SEE SLAB PLAN FOR MORE INFORMATION.
- 3 PROVIDE 2" DRY BOTTOM CONCRETE UNDER ALL GRADE BEAMS AND PILE CAPS. SEE FOUNDATION PLAN NOTES FOR MORE INFORMATION.
- 4 GRADE BEAM - SEE SCHEDULE FOR SIZE AND REINFORCEMENT.
- 5 REINFORCE SLAB TURNDOWN WITH (4)-#5 CONT.

ASHE BROUSSARD I WEINZETTLE ARCHITECTS

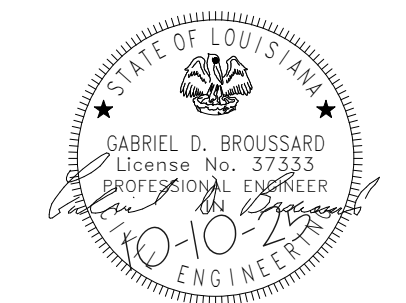
CONSULTANTS:
Monsieur-Buller & Associates, LLC
CABDO Landscape Architecture, LLC
Fox Nease Engineering, Inc.
Sela O'Brien
Mechanical and Electrical
Associated Design Group, Inc.
Specialty Architectural

TIPTON ASSOCIATES

ISSUE FOR BID
LOUISIANA STATE UNIVERSITY
ALEXANDRIA
DOWNTOWN HEALTH SERVICES CENTER
800 JACKSON ST.
ALEXANDRIA, LA 71301

PROJECT # 19-402-23-01 WBS: F. 19002489
ARCH PROJECT # 2023.20 / 1931.00-23
SITE ID: NEW SITE CODE: 6-40-23
DATE OCTOBER 10, 2023
Ashe Broussard Weinzettle Architects, LLP
Tipton Associates APAC, A Joint Venture
301 Jackson Street, Suite 205
Alexandria, LA 71301

NO.	REVISION	DATE



KEYPLAN

FOX NESBIT
BATON ROUGE NEW ORLEANS
RUSTON LAFAYETTE DESTIN
225-293-8595 www.fox-nesbit.com
© 2025 24724 R-24 B360

FOUNDATION
DETAILS

S404