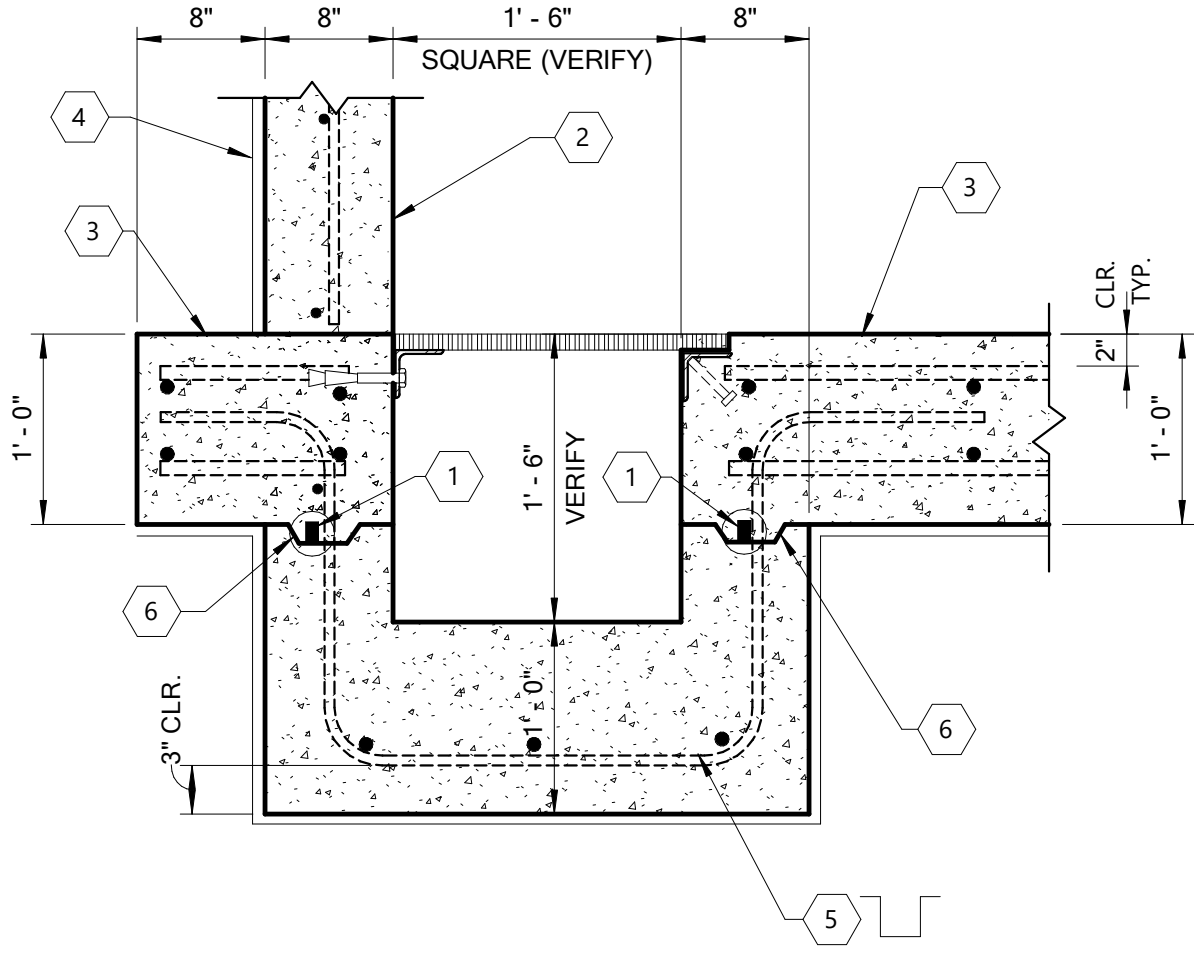
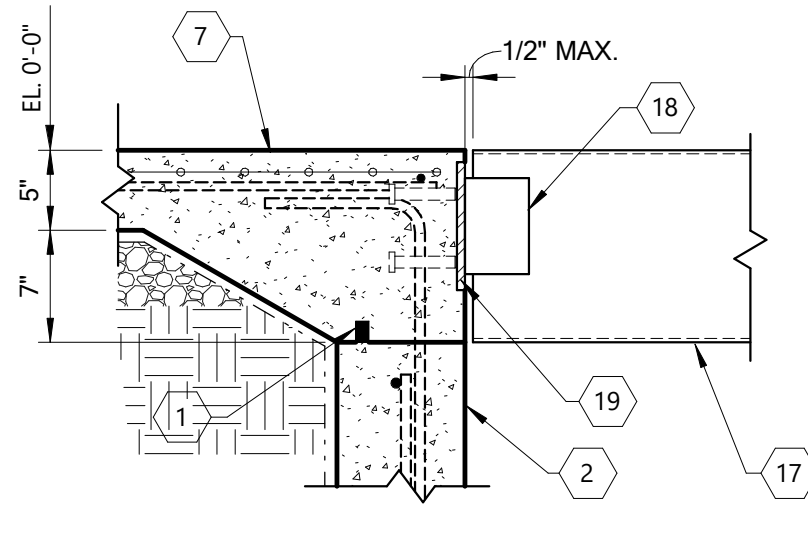


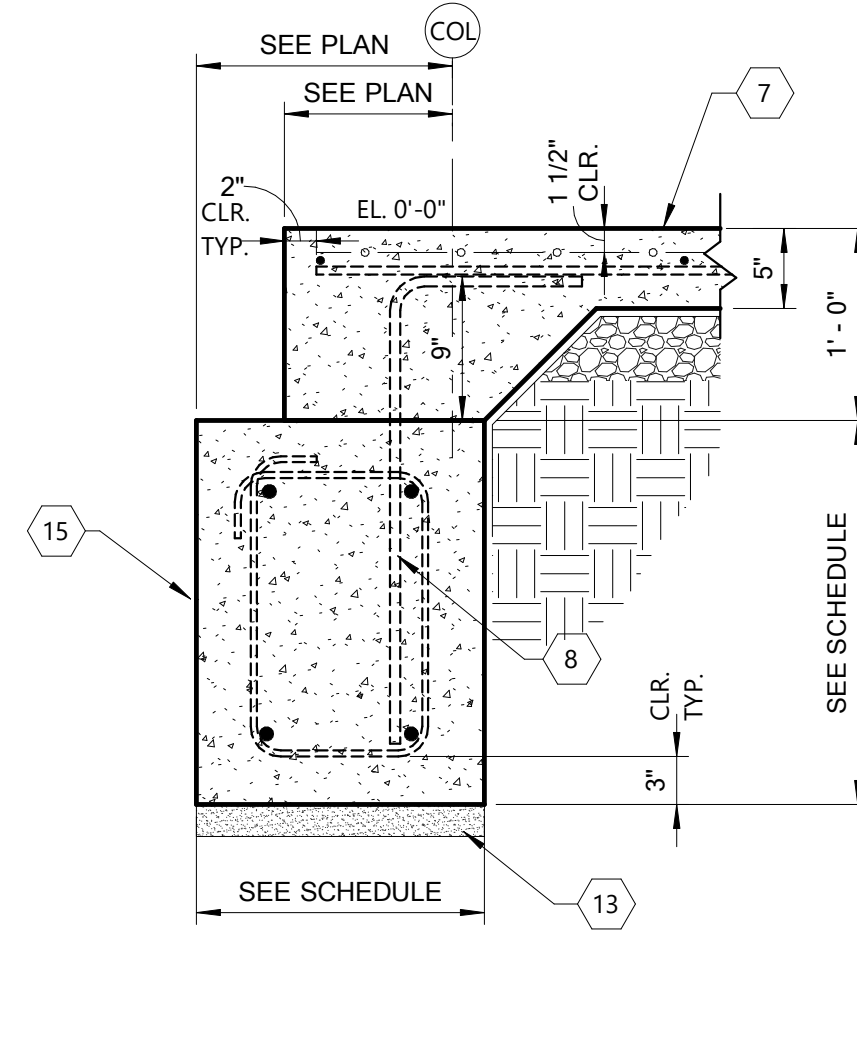
1 Elevator Pit Detail
1" = 1'-0"



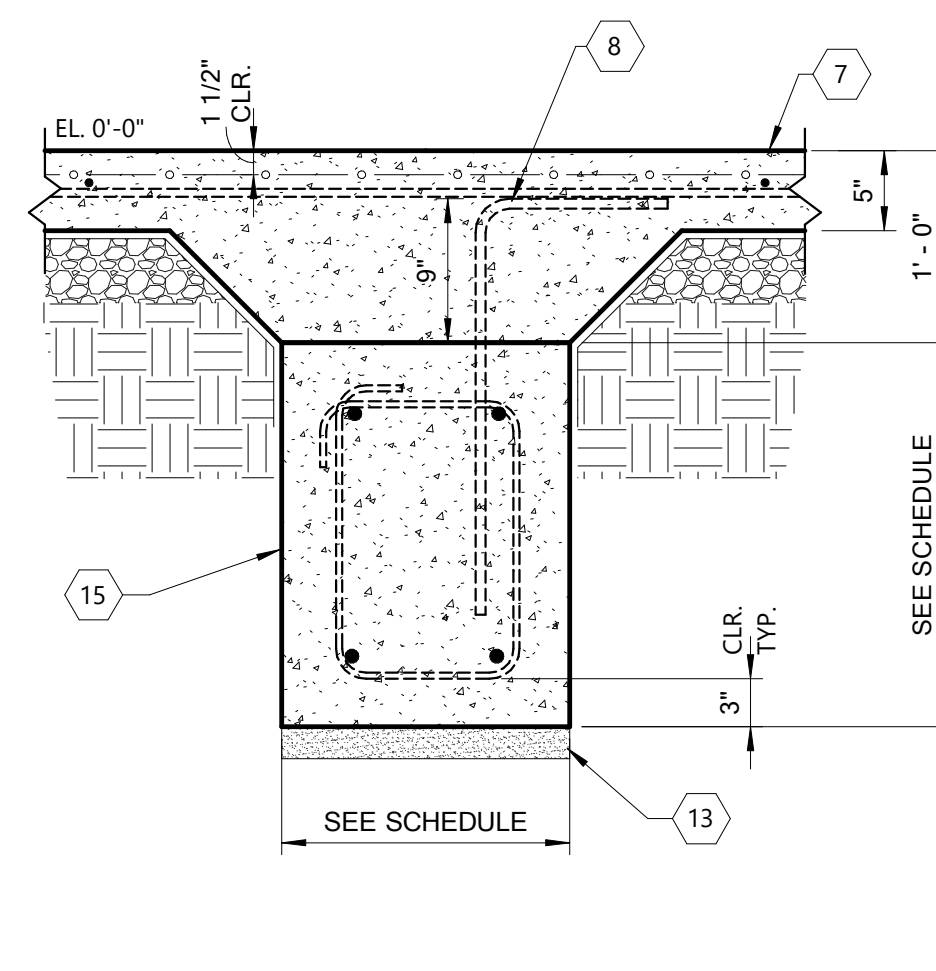
2 Elevator Sump Pit Detail
1" = 1'-0"



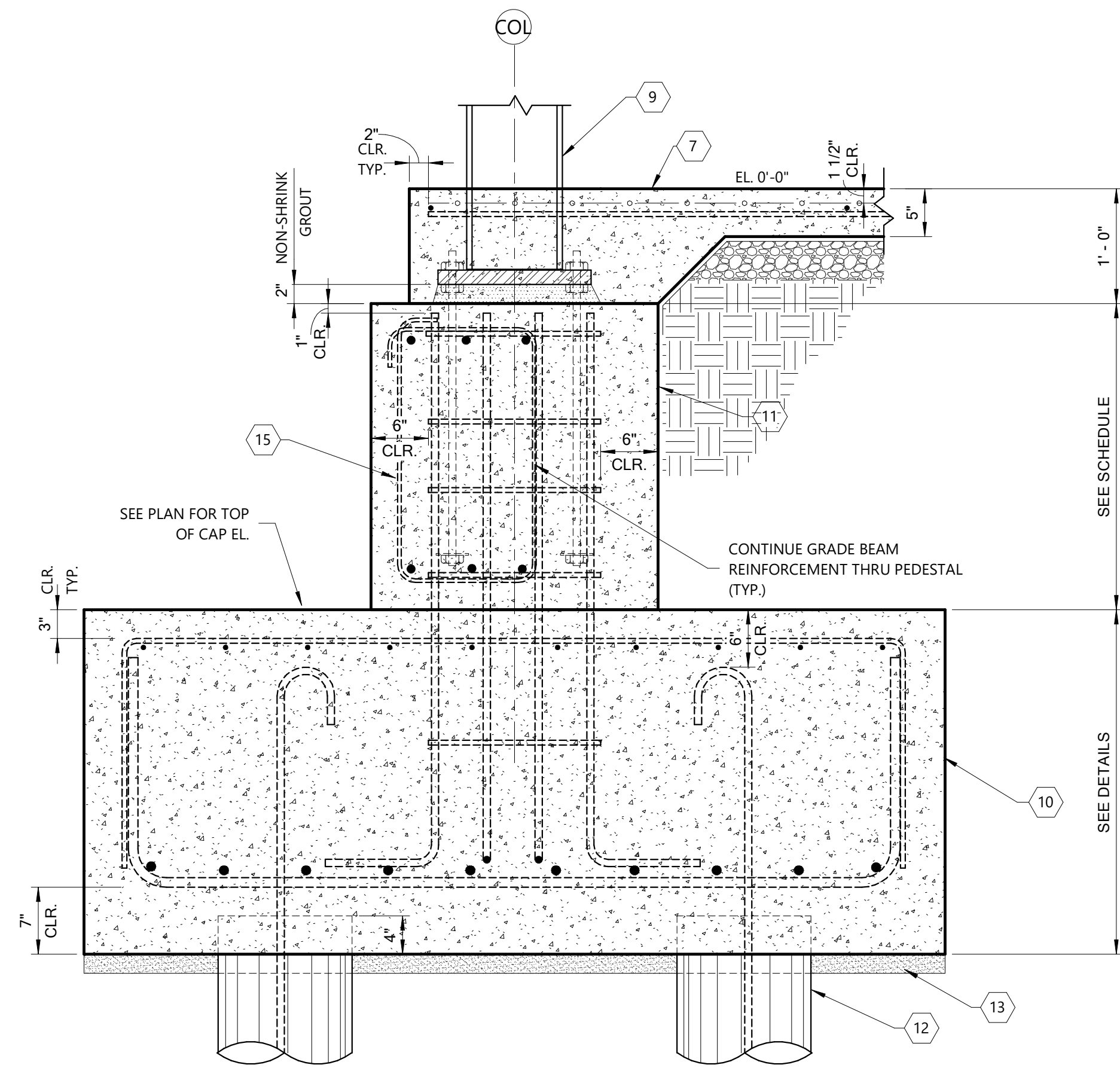
3 HSS Connection To Wall/Slab
1" = 1'-0"



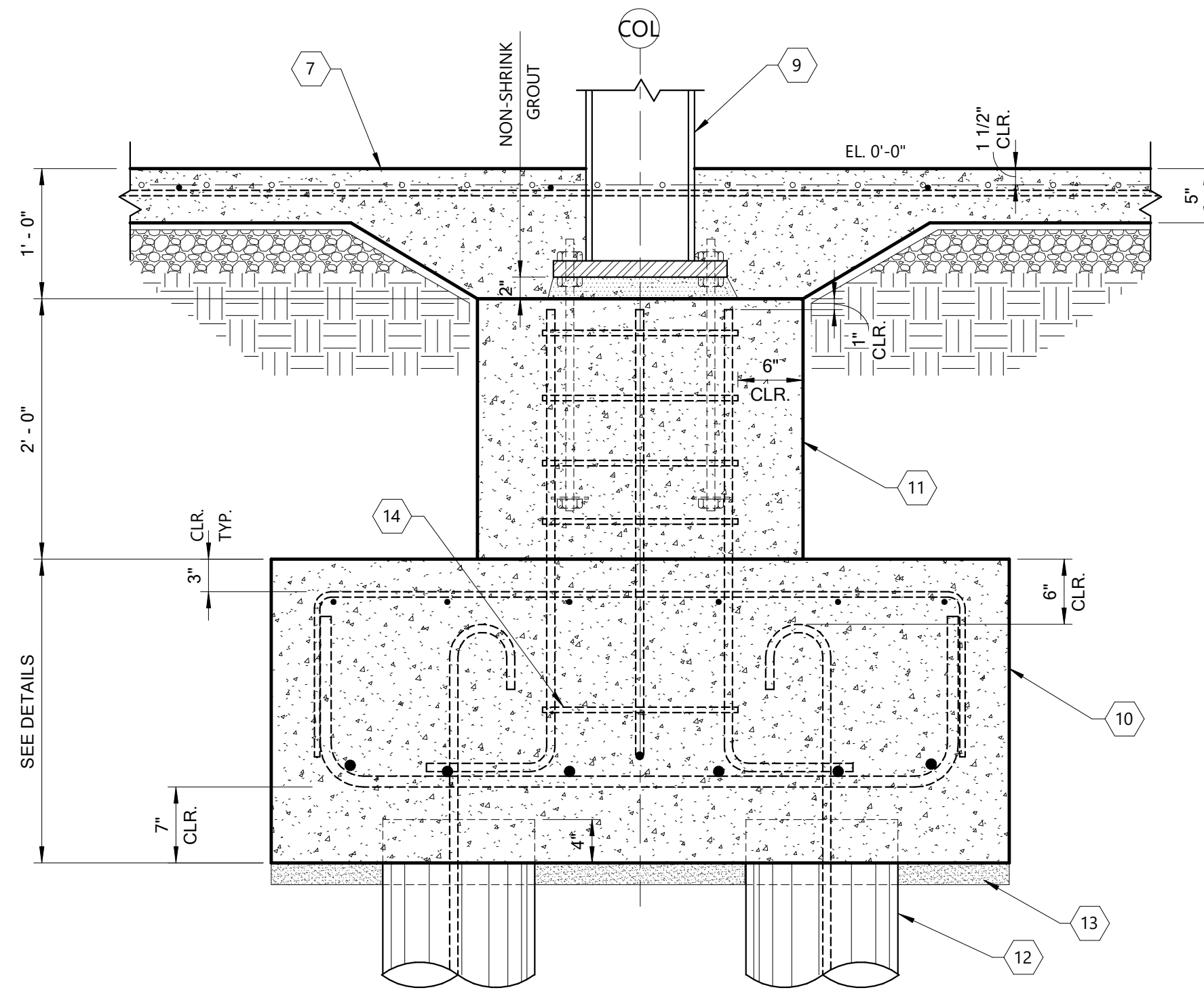
4 Exterior Grade Beam
1" = 1'-0"



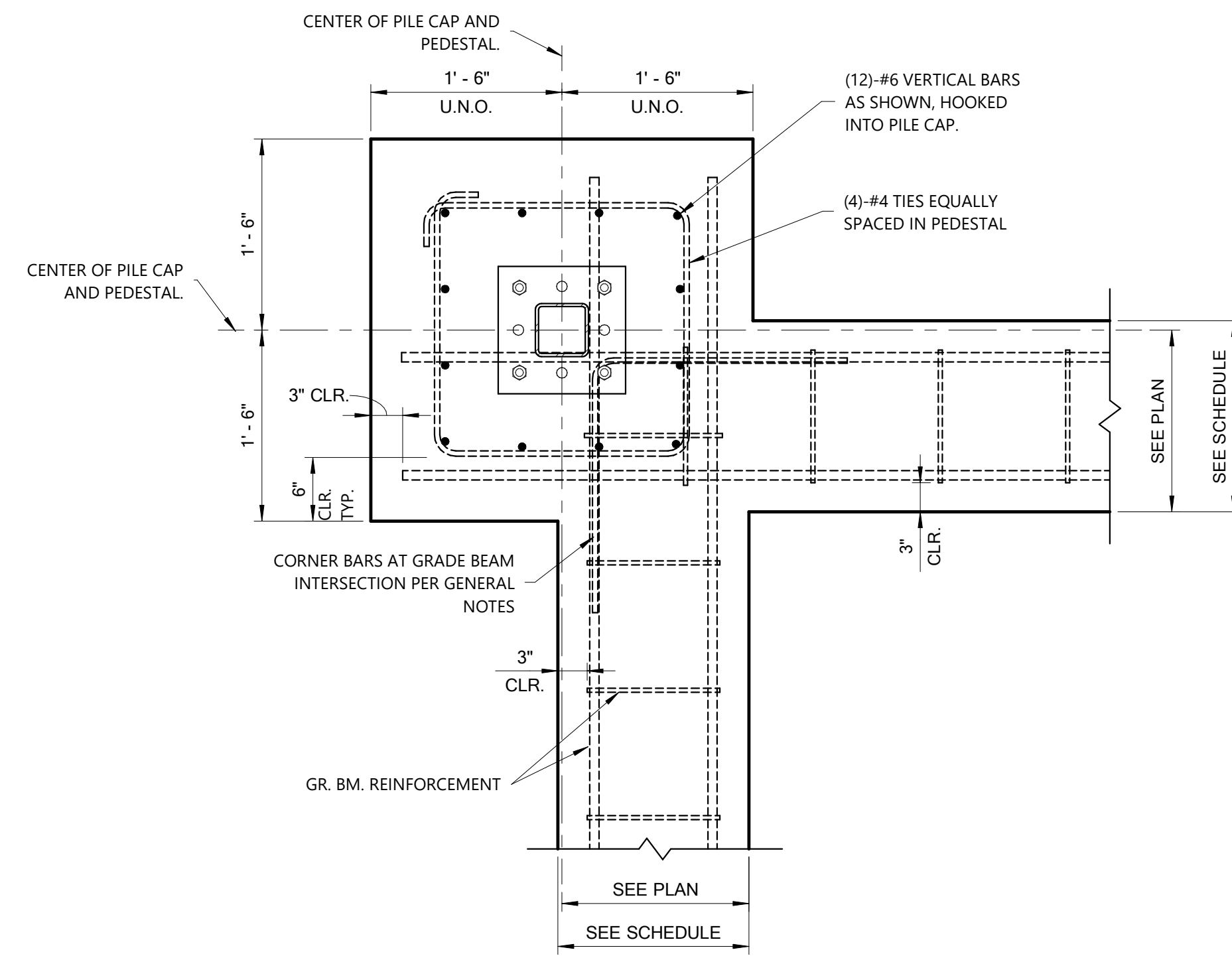
5 Typical Interior Grade Beam
1" = 1'-0"



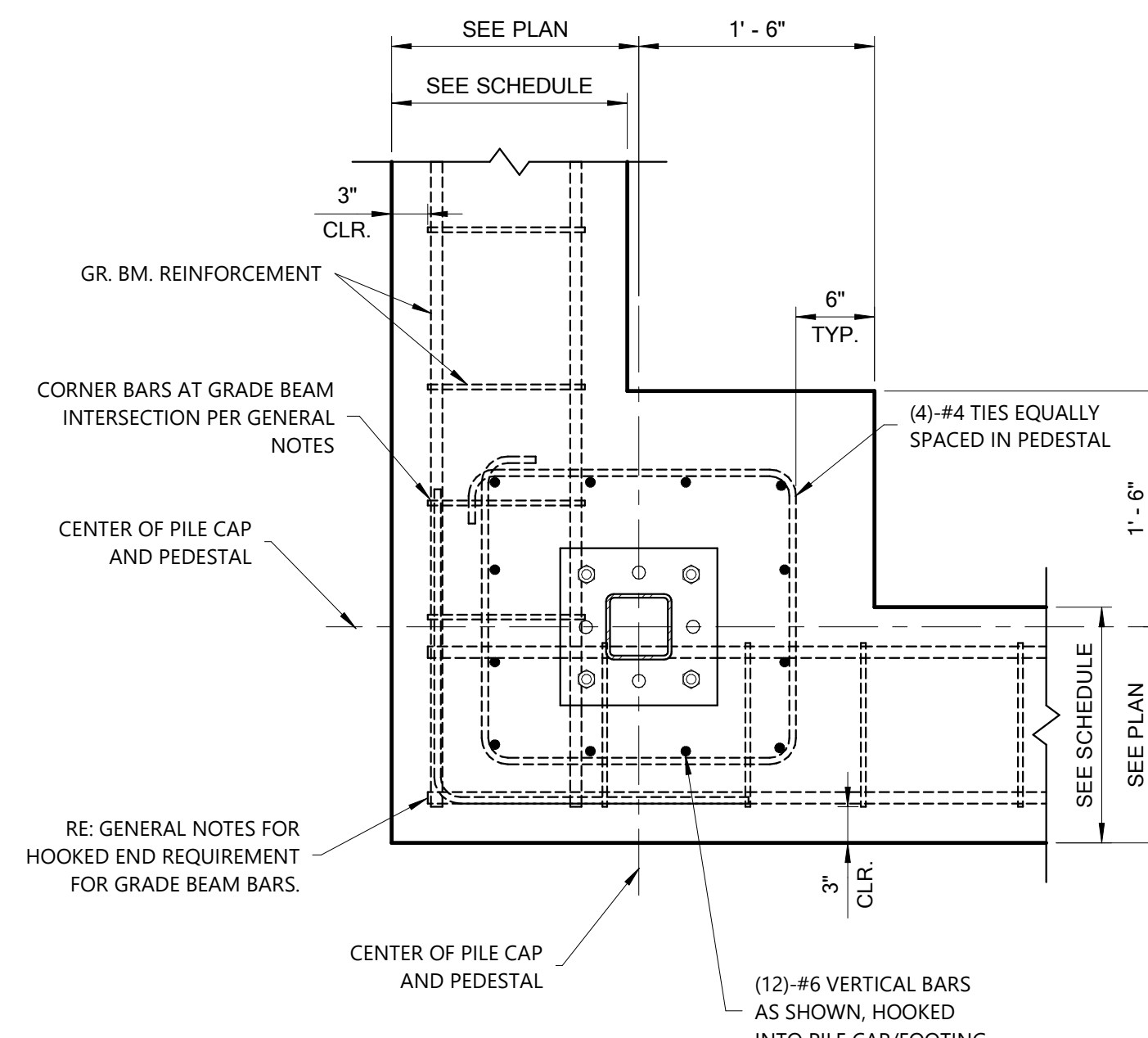
6 Exterior Pedestal Detail At Auger Cast Pile
1" = 1'-0"



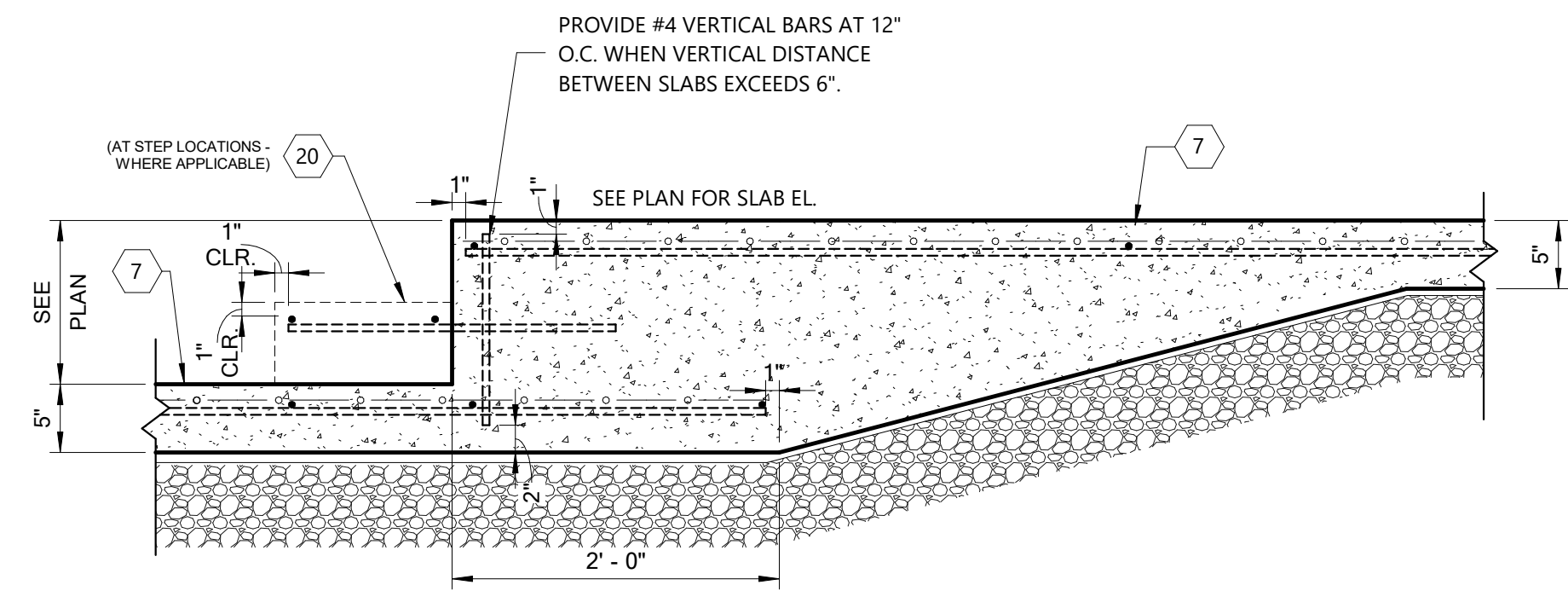
7 Interior Pedestal Detail At Auger Cast Pile
1" = 1'-0"



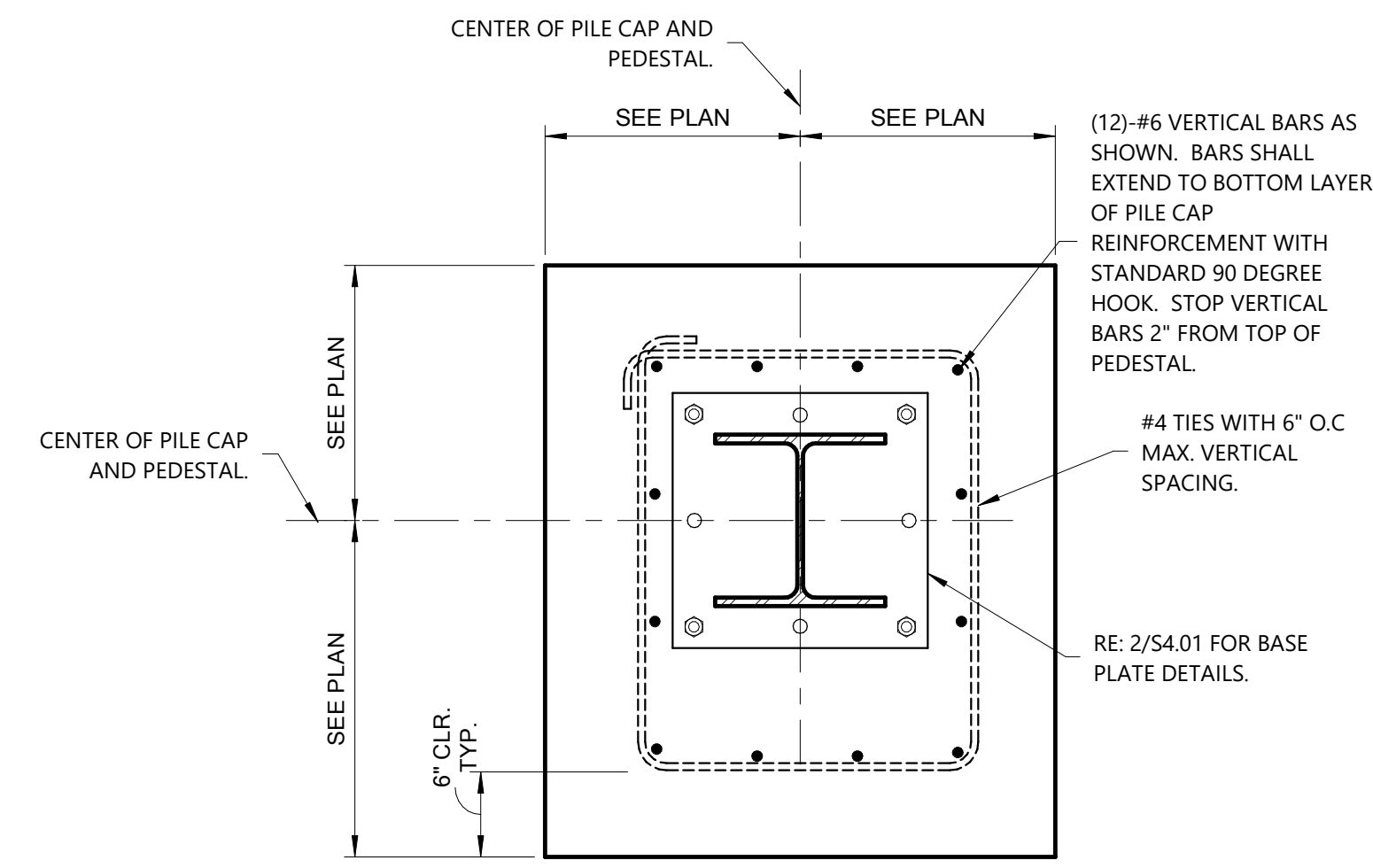
8 Typical Interior Corner Pedestal Plan View HSS Col
1" = 1'-0"



9 Typical Corner Pedestal Plan View HSS Col
1" = 1'-0"



10 Slab Recess Detail
1" = 1'-0"



11 Exterior Pedestal Plan View At Wrapped Columns
1" = 1'-0"

Keynote Legend

1. CONTINUOUS WATERSTOP.
2. 8" THICK CONCRETE WALL REINFORCED WITH #5 AT 12" O.C. EACH WAY. CENTER REINFORCEMENT IN WALL.
3. 12" THICK CONCRETE MAT FOOTING REINFORCED WITH #6 AT 12" O.C. EACH WAY TOP AND #7 AT 12" O.C. EACH WAY BOTTOM.
4. BENTONITE WATERPROOFING MEMBRANE AROUND WALLS. SUBMIT INFORMATION ON BENTONITE TO ARCHITECT FOR APPROVAL. PROVIDE LAPS AND TRANSITIONS PER MANUFACTURER'S RECOMMENDATIONS.
5. (3)-#5 BARS EACH WAY.
6. CONTINUOUS 2X4 METAL KEYWAY.
7. CONCRETE PILE CAP - SEE SLAB PLAN FOR MORE INFORMATION.
8. SEE NOTE ON FOUNDATION PLAN FOR TYPICAL SLAB TO GRADE BEAM DOWELS. STAGGER SIDE TO SIDE AT INTERIOR GRADE BEAM.
9. STEEL COLUMN - SEE PLAN FOR SIZE.
10. CONCRETE PILE CAP - SEE PLANS AND DETAILS FOR INFORMATION.
11. RECTANGULAR CONCRETE PEDESTAL - SEE REINFORCEMENT.
12. AUGER CAST-IN-PLACE PILE - SEE PLAN AND DETAIL FOR MORE INFORMATION.
13. PROVIDE 2" DRY BOTTOM CONCRETE UNDER ALL GRADE BEAMS AND PILE CAPS. SEE FOUNDATION PLAN NOTES FOR MORE INFORMATION.
14. PROVIDE ADDITIONAL PEDESTAL TIE IN FOOTING FOR ALIGNMENT OF VERTICAL BARS.
15. GRADE BEAM - SEE SCHEDULE FOR SIZE AND REINFORCEMENT.
16. #5 L-BAR DOWELS (a=12", b=24") AT TOP AND BOTTOM OF PIT WALLS AND PIT GRADE BEAMS. SPACE DOWELS AT SAME FREQUENCY OF PIT WALL VERTICAL BARS AND LAP WITH WALL BARS.
17. HSS BEAM - SEE PLAN FOR SIZE AND ELEVATION.
18. 3/8" PLATE 6"x4" ON BOTH SIDES OF HSS BEAM. FIELD WELD TO EMBED PLATE AND BEAM WITH 1/4" FILLET WELD X 4" LONG ON EACH SIDE.
19. 1/2"x8"x8" EMBED PLATE WITH (2)-3/4" DIA. X 8" LONG HEADED STUDS.
20. REINFORCE STEP WITH (2)-#4 CONT. AND #4 X 24" LONG AT 12" O.C.