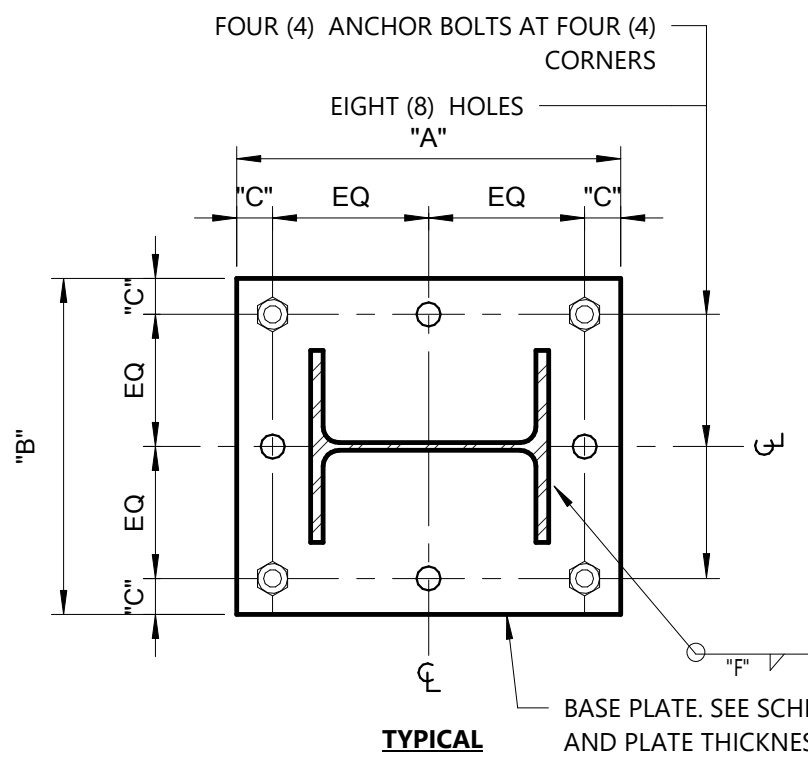


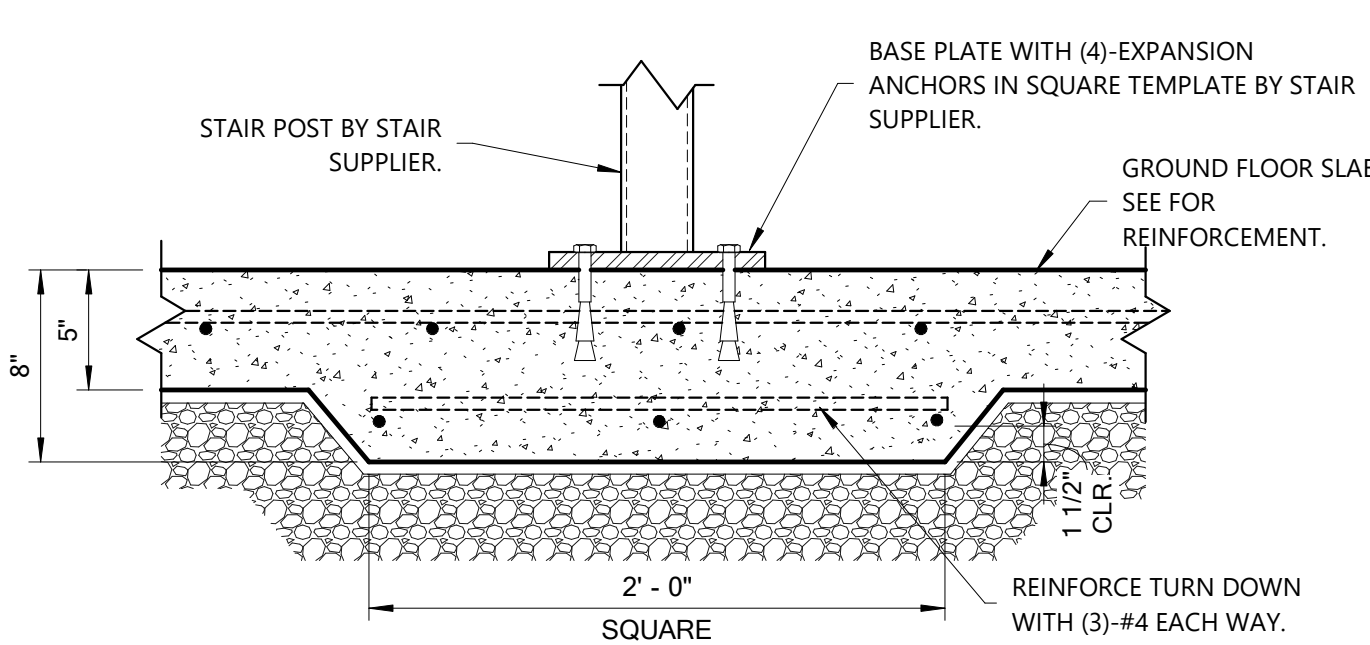
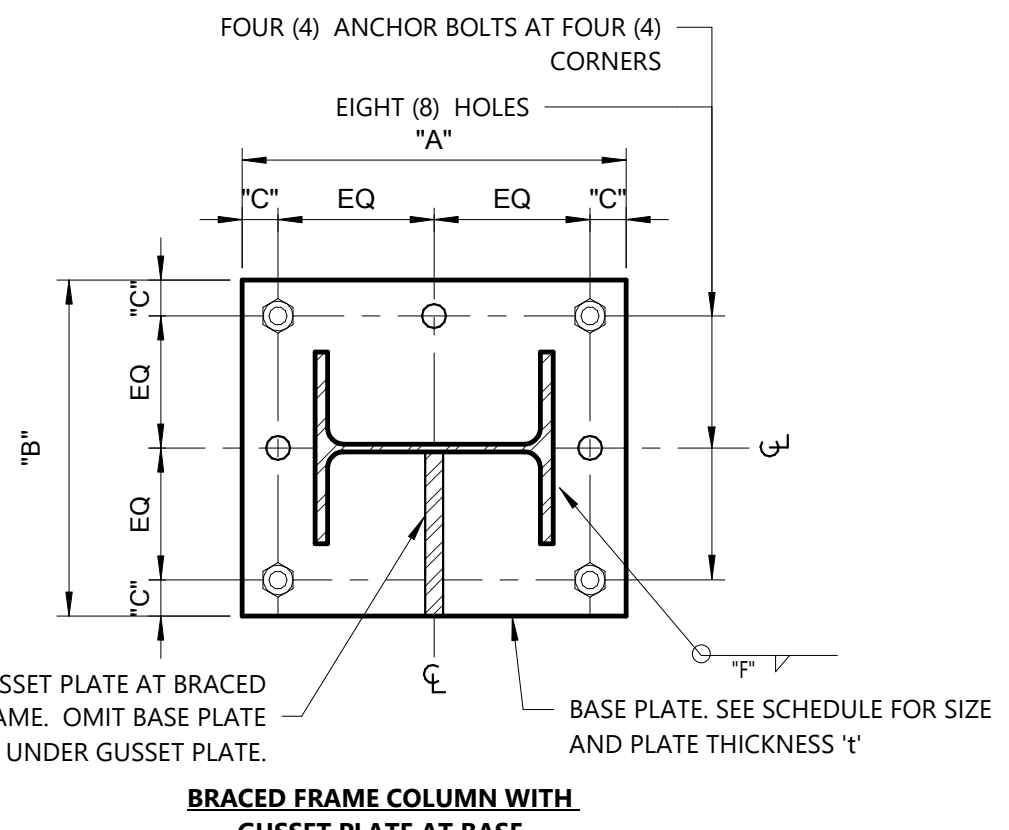
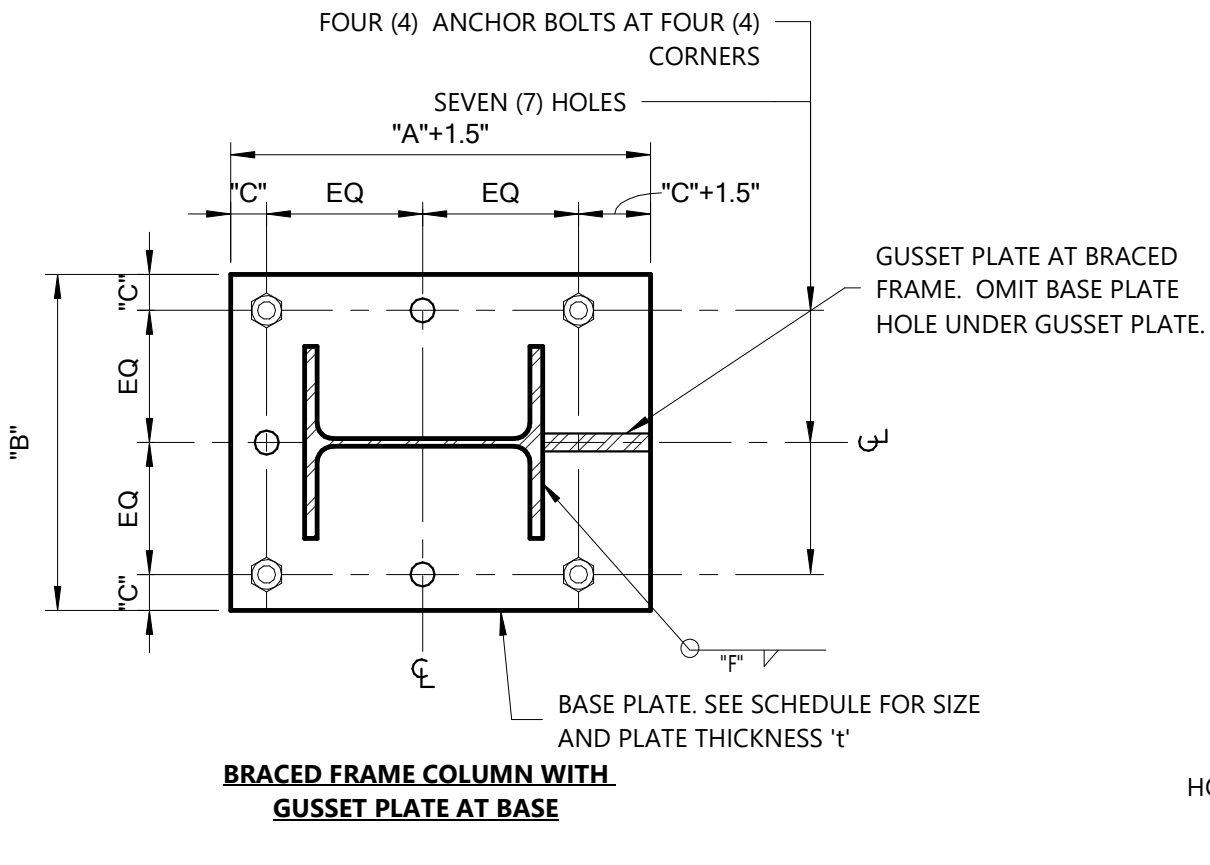
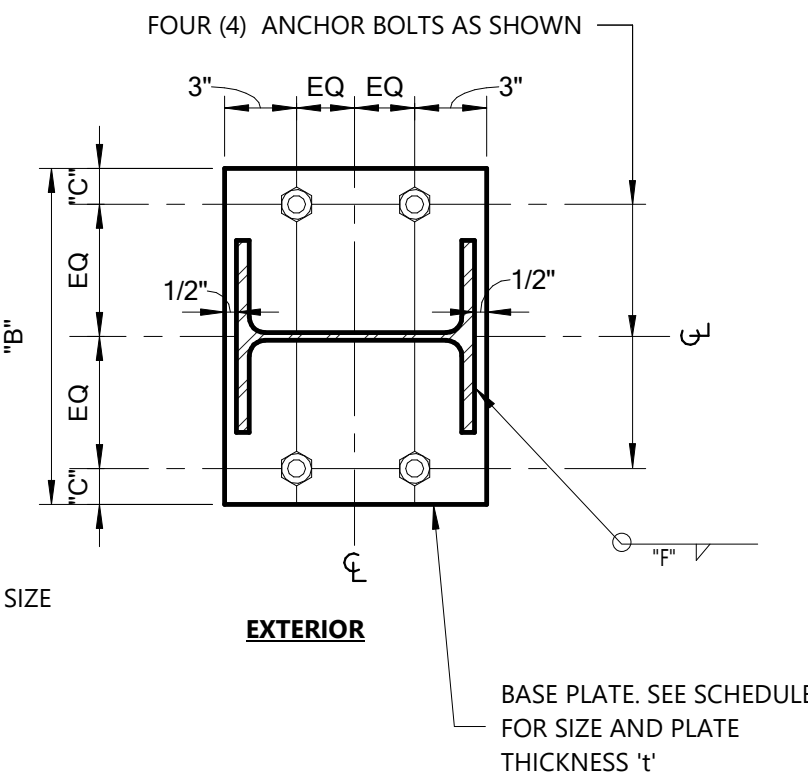
**1 Typical Anchor Bolt**  
1 1/2" = 1'-0"

WF COL. SIZE	"I"	"A"	"B"	"C"	BOLT DIA.	HOLE DIA.	"I"	WASHER SIZE	WASHER HOLE SIZE
W10	1 1/2"	16"	16"	1 1/2"	7/8"	1 1/8"	5/16"	2"x1/4"	15/16"
W12	1 1/2"	18"	18"	1 1/2"	7/8"	1 1/8"	5/16"	2"x1/4"	15/16"

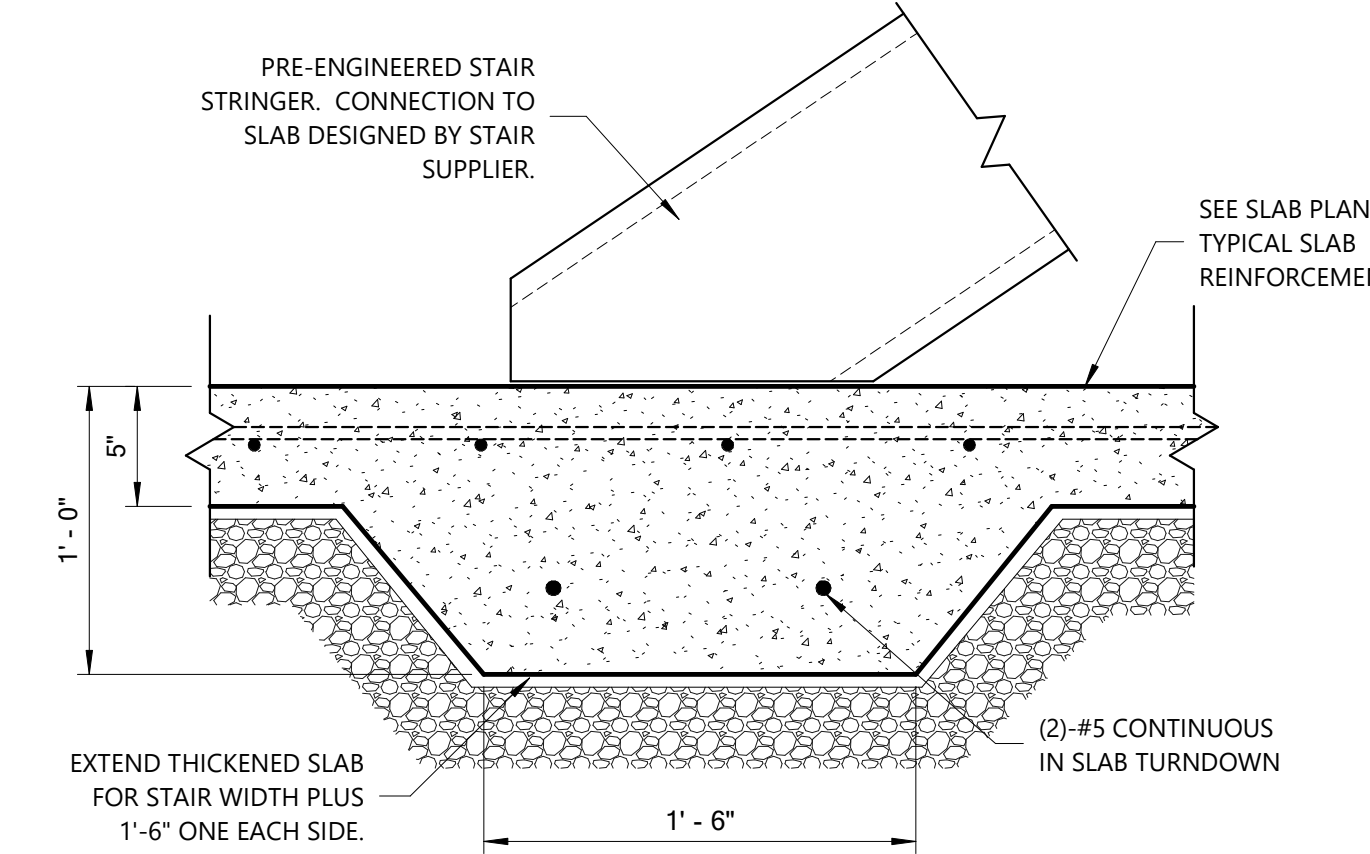
**NOTE:**  
ALL BASE PLATES SHALL BE GRADE 50 MATERIAL.  
ALL PORTIONS OF BASE PLATE WHICH EXTEND BEYOND EXTERIOR EDGE OF BUILDING SLAB SHALL BE SHOP-COATED WITH 3 LAYERS OF A ZINC-RICH COLD-GALVANIZE COMPOUND.  
ALL ANCHOR BOLTS, NUTS, AND WASHERS WHICH OCCUR AT EXTERIOR COLUMNS OR EXTEND BEYOND EXTERIOR EDGE OF BUILDING SLAB SHALL BE HOT-DIPPED GALVANIZED.  
SEE PLANS FOR COLUMN LOCATIONS WHERE SIX ANCHOR BOLT ARE REQUIRED.  
SEE PLANS FOR COLUMN LOCATIONS WHERE POLYIMIDE EPOXY PRIMER AND POLYIMIDE EPOXY COAL TAR COATING ARE REQUIRED.



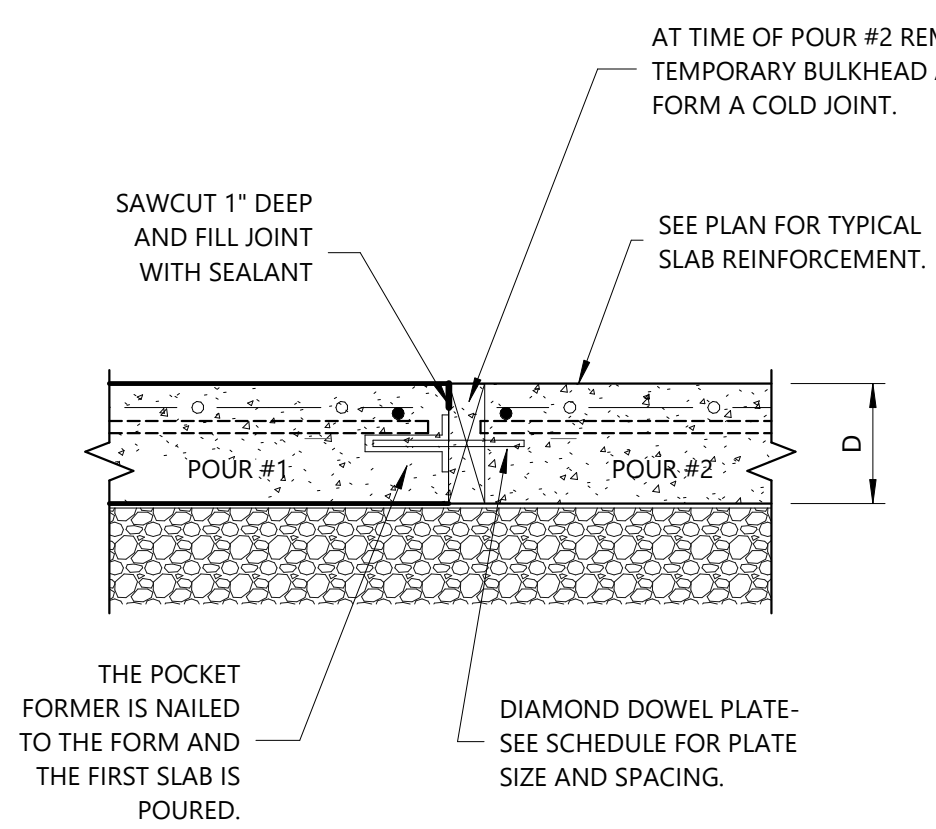
**2 Typical WF Base Plate Details**  
1 1/2" = 1'-0"



**3 Stair Post To Slab On Grade**  
1 1/2" = 1'-0"



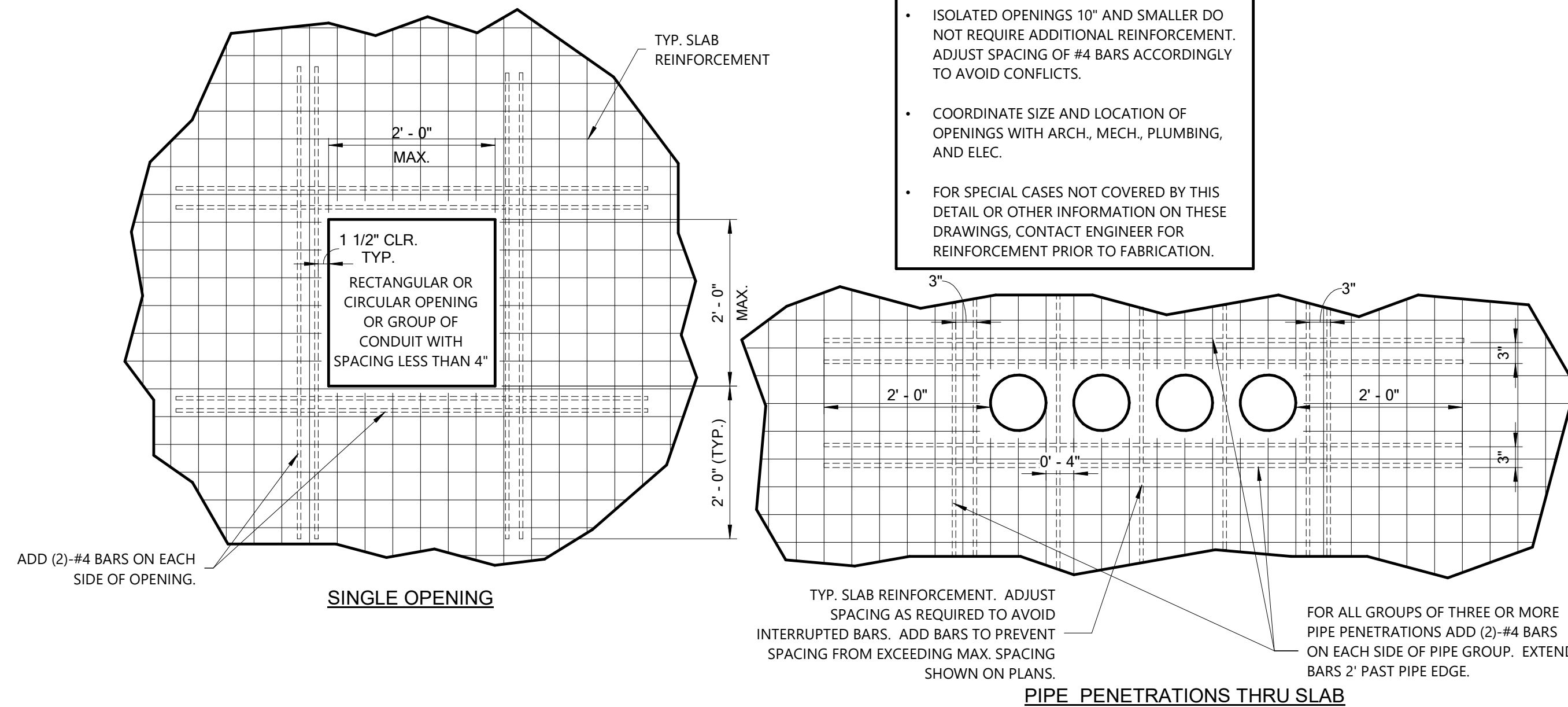
**4 Stair Stringer To Slab On Grade**  
1 1/2" = 1'-0"



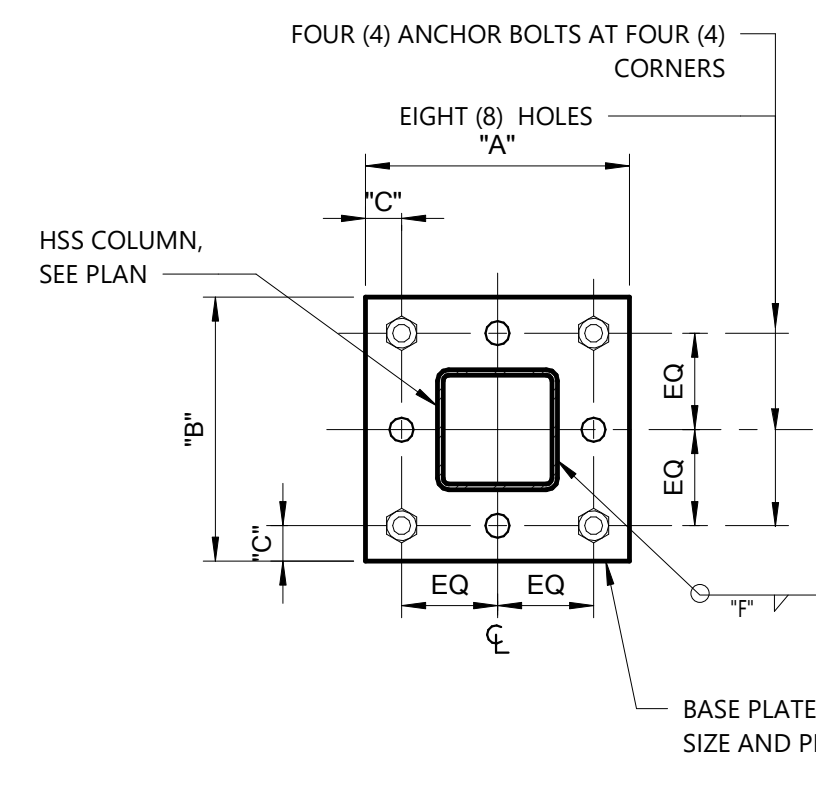
DIAMOND DOWEL LOAD PLATE SCHEDULE		
D (IN.)	PLATE DIMENSION (IN.)	PLATE SPACING (IN.)
5 TO 6	1/4"x4 1/2"x4 1/2"	18
7 TO 8	3/8"x4 1/2"x4 1/2"	18

**NOTES:**  
THE GENERAL CONTRACTOR SHALL SUBMIT A PLAN OF PROPOSED CONSTRUCTION JOINT LOCATIONS WITH THE REBAR SHOP DRAWINGS FOR REVIEW AND APPROVAL.  
THE MAXIMUM AREA FOR A SLAB POUR SHALL BE 17,000 SQUARE FEET. THE MAXIMUM LENGTH TO WIDTH RATIO OF A SLAB POUR SHALL BE 3 TO 1.

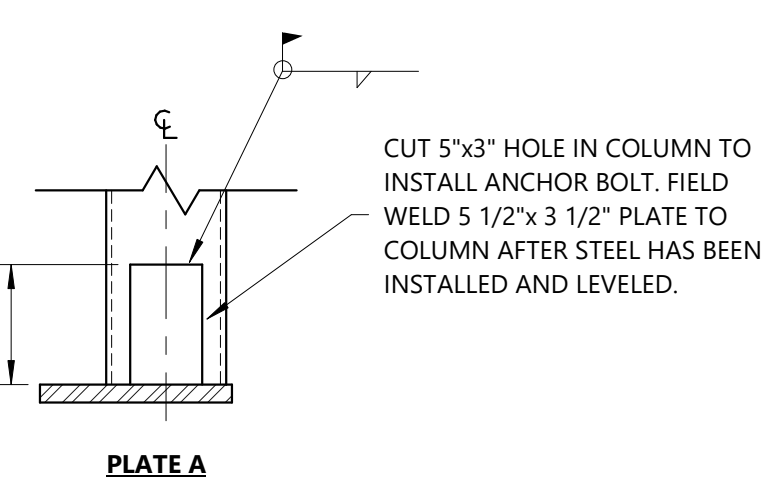
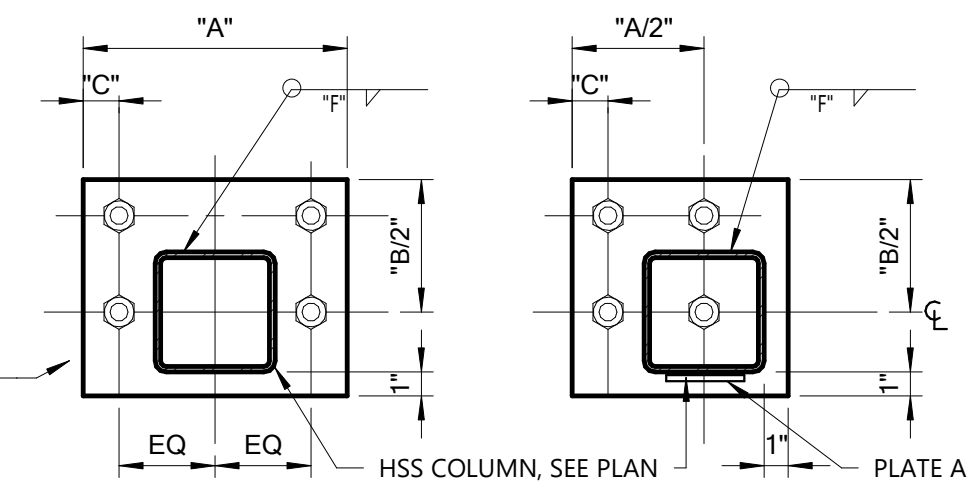
**5 Slab Construction Joint**  
1 1/2" = 1'-0"



**6 Typical Openings In Concrete Slab On Grade**  
3/4" = 1'-0"

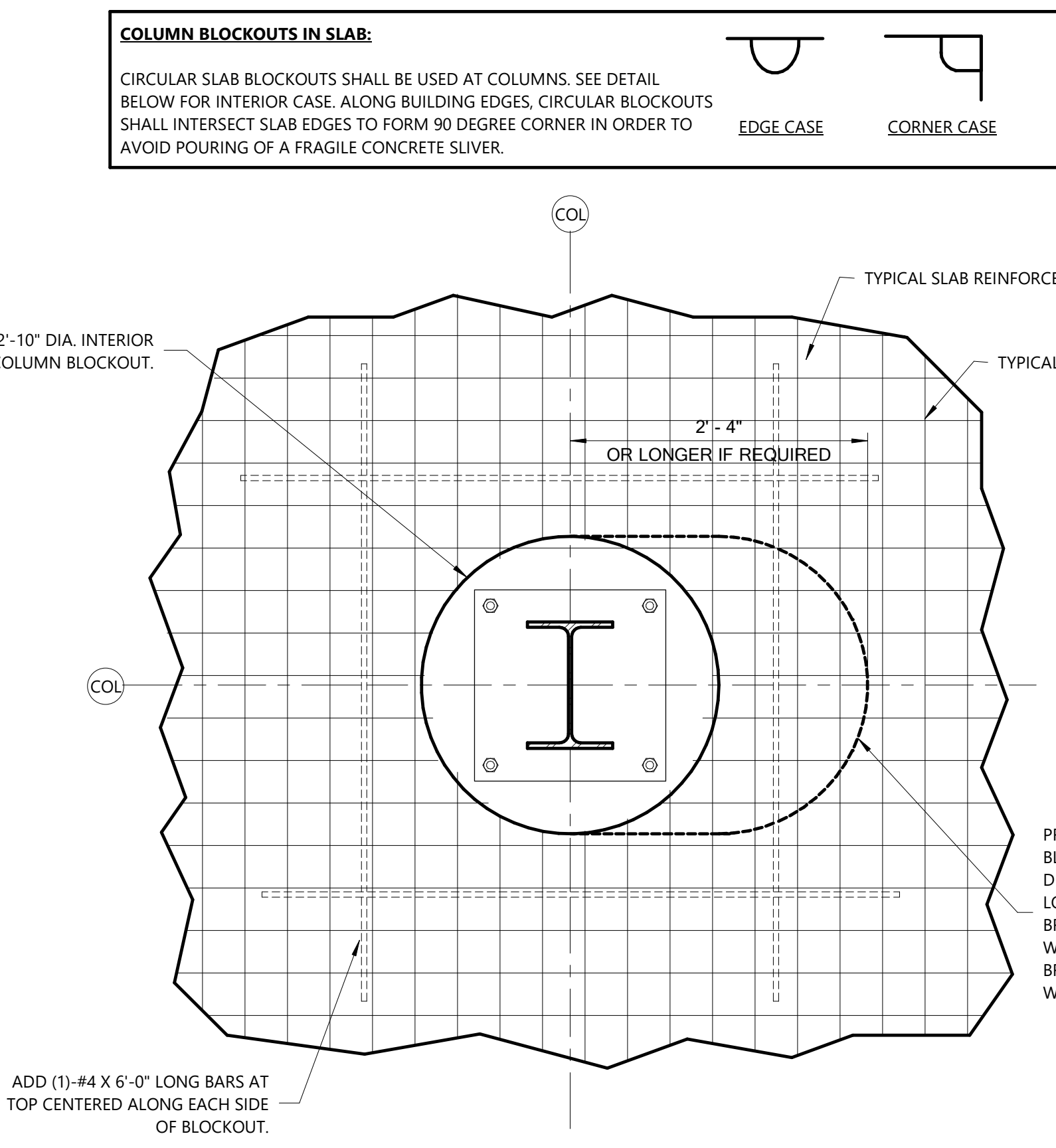


HSS COL. SIZE	"I"	"A"	"B"	"C"	BOLT DIA.	BASE PLATE HOLE DIA.	"I"	WASHER SIZE	WASHER HOLE DIA.
HSS 4x4	1 1/2"	10"	10"	1 1/2"	7/8"	1 1/8"	5/16"	2"x1/4"	15/16"
HSS 5x5	1 1/2"	11"	11"	1 1/2"	7/8"	1 1/8"	5/16"	2"x1/4"	15/16"
HSS 6x6	1 1/2"	12"	12"	1 1/2"	7/8"	1 1/8"	5/16"	2"x1/4"	15/16"
HSS 8x8	1 1/2"	14"	14"	1 1/2"	7/8"	1 1/8"	5/16"	2"x1/4"	15/16"
HSS 10x10	1 1/2"	16"	16"	1 1/2"	7/8"	1 1/8"	5/16"	2"x1/4"	15/16"

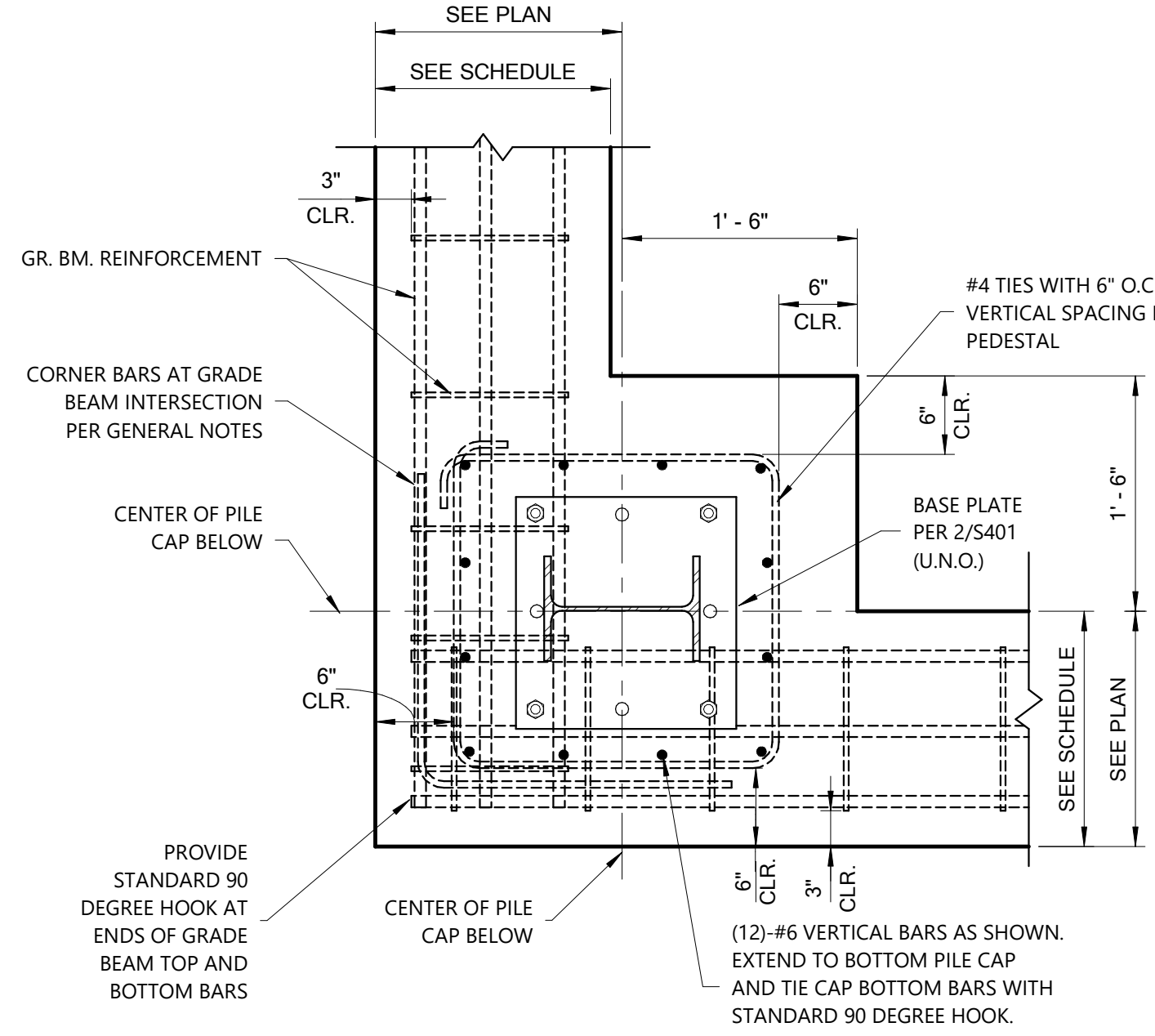


**NOTE:**  
ALL BASE PLATES SHALL BE GRADE 50 MATERIAL.  
ALL PORTIONS OF BASE PLATE WHICH EXTEND BEYOND EXTERIOR EDGE OF BUILDING SLAB SHALL BE SHOP-COATED WITH 3 LAYERS OF A ZINC-RICH COLD-GALVANIZE COMPOUND.  
ALL ANCHOR BOLTS, NUTS, AND WASHERS WHICH OCCUR AT EXTERIOR COLUMN OR EXTEND BEYOND EXTERIOR EDGE OF BUILDING SLAB SHALL BE HOT-DIPPED GALVANIZED.  
SEE PLANS FOR COLUMN LOCATIONS WHERE POLYIMIDE EPOXY PRIMER AND POLYIMIDE EPOXY COAL TAR COATING ARE REQUIRED.

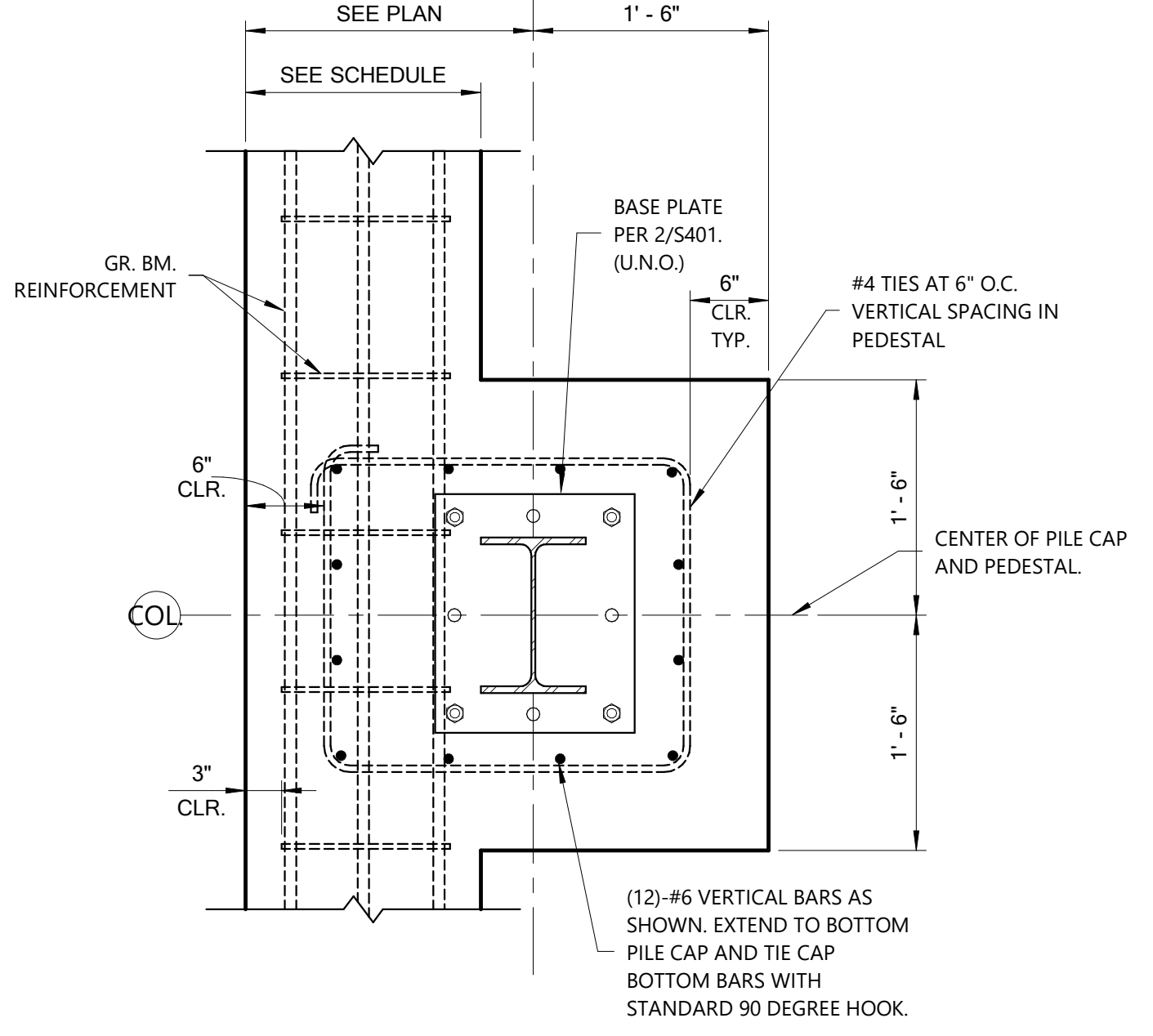
**7 HSS Column Base Plate Details**  
1 1/2" = 1'-0"



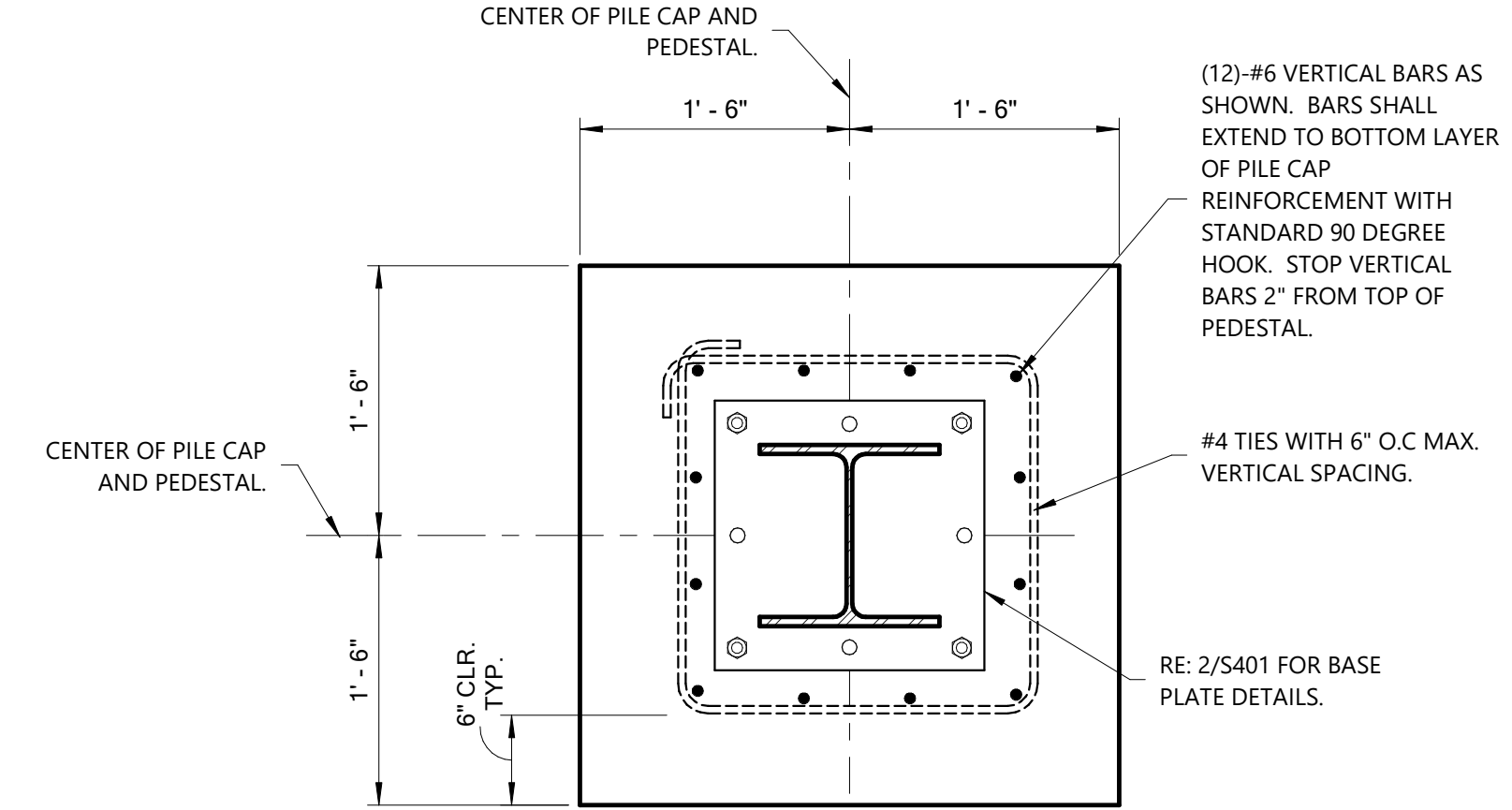
**8 Slab Blockout At Int. Column**  
1" = 1'-0"



**9 Typical Corner Pedestal Plan View**  
1" = 1'-0"



**10 Typical Edge Pedestal Plan View**  
1" = 1'-0"



**11 Interior Pedestal Plan View**  
1" = 1'-0"

**FOX NESBIT**  
BATON ROUGE NEW ORLEANS  
RUSTON LAFAYETTE DESTIN  
225.293.6505 www.fox-nesbit.com  
© 2025 24724 R-24 B360