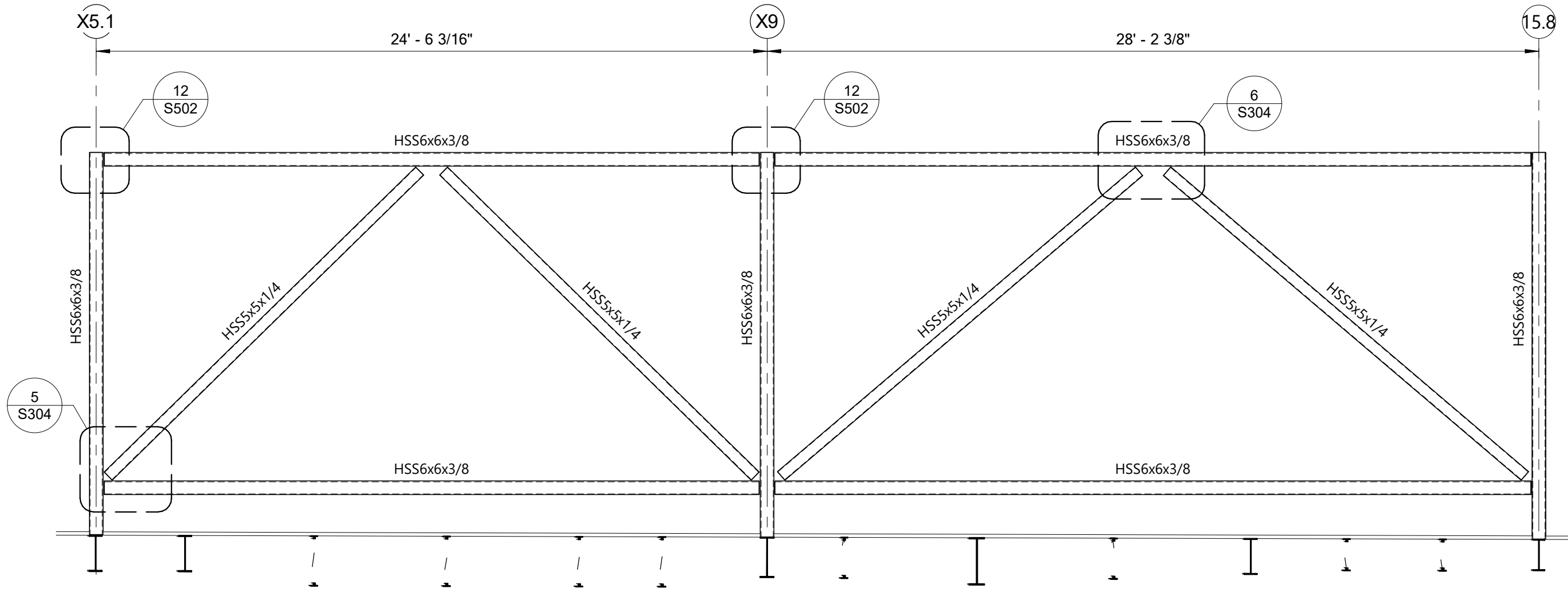
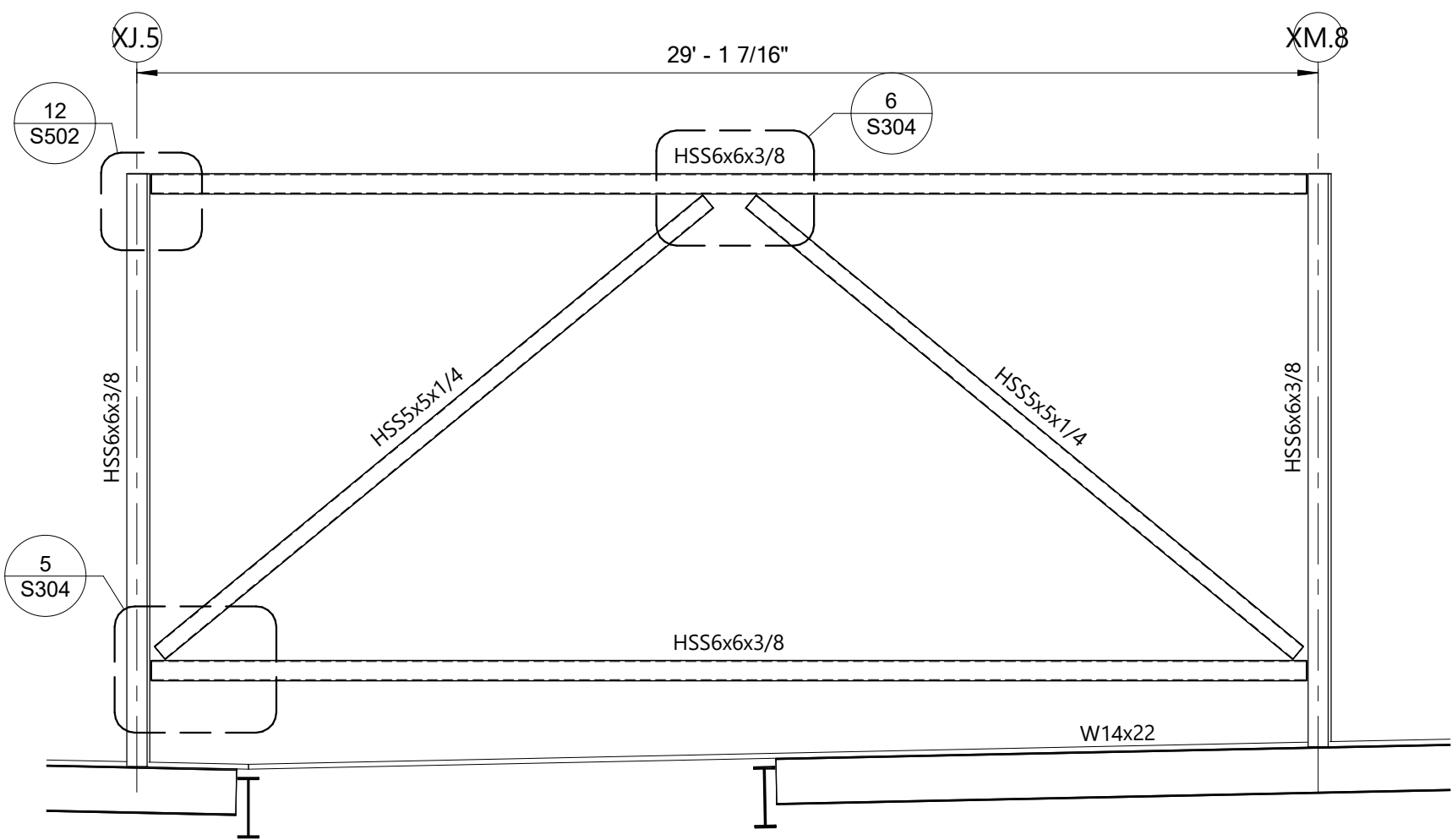


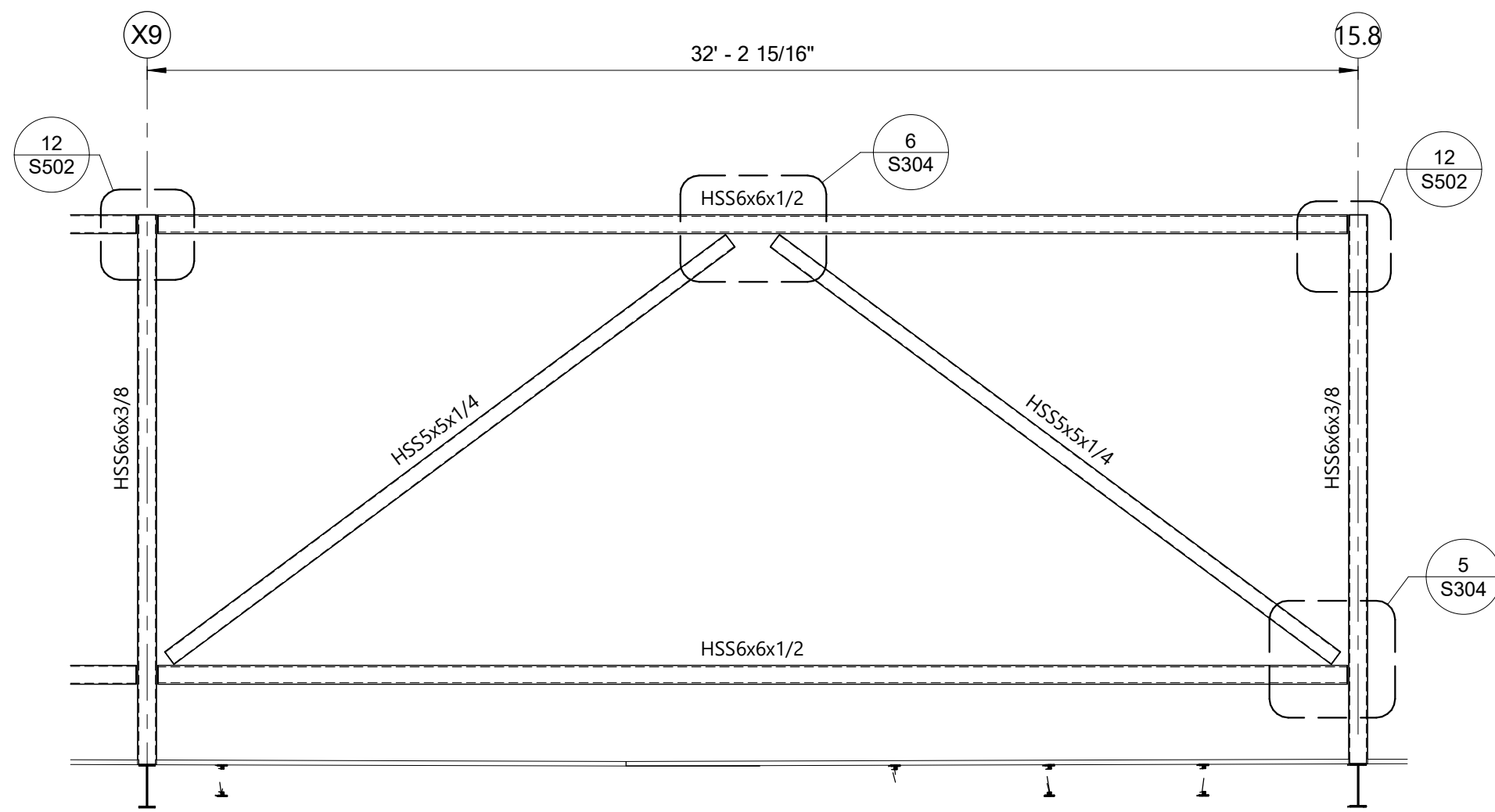
1 Braced Frame BF-X5.1 Along Line X5.1
1/4" = 1'-0"



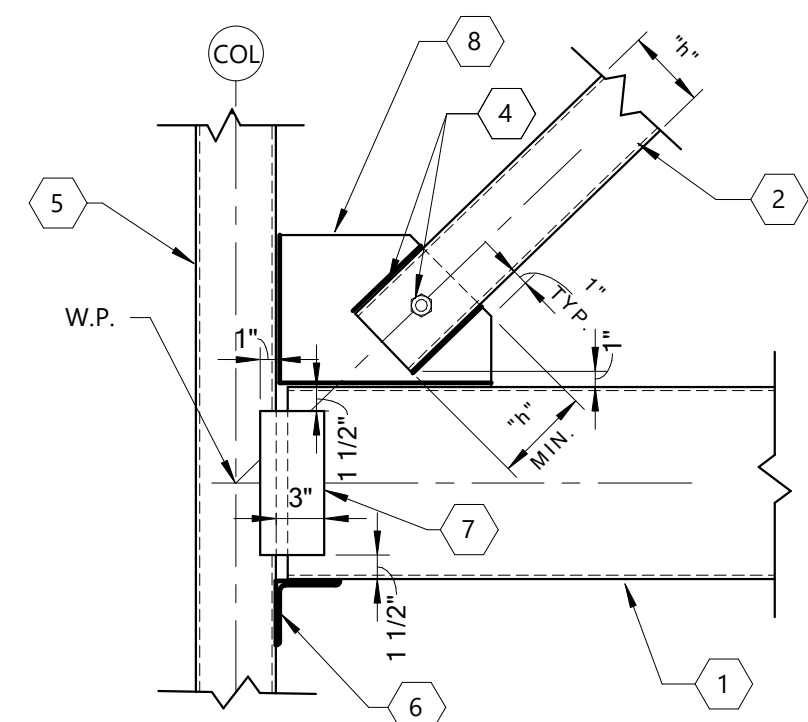
2 Braced Frame BF-XM.8 Along Line XM.8
1/4" = 1'-0"



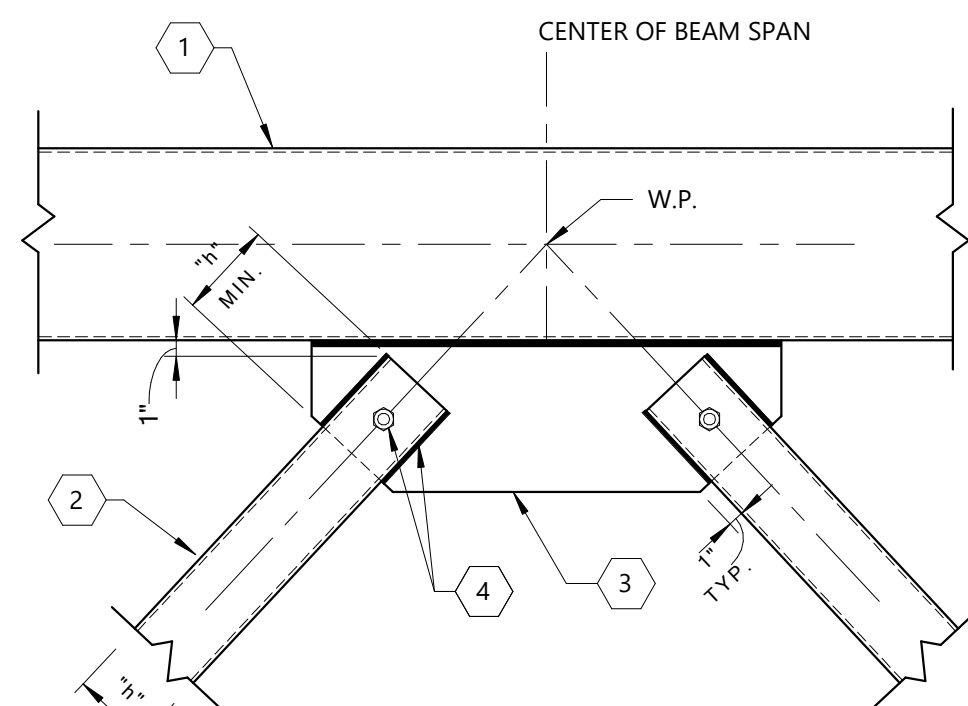
3 Braced Frame BF-15.8 Along Line 15.8
1/4" = 1'-0"



4 Braced Frame BF-XJ.5 Along Line XJ.5
1/4" = 1'-0"



5 Brace Detail At HSS Col.
1" = 1'-0"



6 Brace To HSS Beam
1" = 1'-0"

COOLING TOWER & ENCLOSURE GALVANIZING NOTE:

ALL STRUCTURAL STEEL SUPPORTING COOLING TOWERS AND COOLING TOWER ENCLOSURE WALLS (INCLUDING COLUMNS, BEAMS, CONNECTION PLATES, ANCHOR BOLTS, ETC.) SHALL BE HOT DIPPED GALVANIZED PER REQUIREMENTS IN SPECIFICATION 051200. TOUCH UP ALL BREAKS IN THE GALVANIZE WITH 3 LAYERS OF A ZINC RICH COLD GALVANIZE COMPOUND PER SPECIFICATION 051200.

Keynote Legend

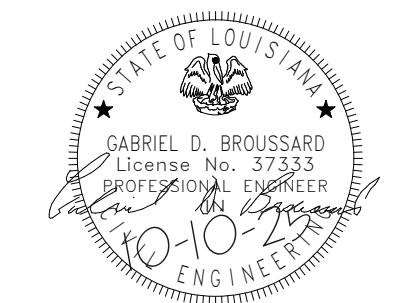
- 1 HSS BEAM - SEE PLAN FOR SIZE AND ELEVATION.
- 2 DIAGONAL BRACE MEMBER - SEE ELEVATIONS FOR SIZE.
- 3 3/4" THICK GUSSET PLATE SHOP WELDED TO BEAM WITH CONTINUOUS 5/16" FILLET WELD EACH SIDE OF PLATE.
- 4 (1)-3/4" DIA. A325-N BOLT FOR ERECTION. FIELD WELD TUBE TO PLATE ALL AROUND ON BOTH SIDES OF PLATE WITH 1/4" FILLET WELD. PROVIDE 15/16" DIA. HOLES IN BRACE AND GUSSET PLATE.
- 5 STEEL COLUMN - SEE PLAN FOR SIZE.
- 6 L4x4x1/2 CLIP ANGLE. SHOP WELD ALL AROUND TO COLUMN AND FIELD WELD 3 SIDES TO BEAM WITH FLARE BEVEL GROOVE WELD OR 1/4" FILLET WELD. LENGTH OF THE ANGLE SHALL BE SAME AS THE WIDTH OF THE COLUMN OR BEAM, WHICHEVER IS GREATER.
- 7 4" WIDE x 3/8" THICK PLATE EACH SIDE. WELD ALL AROUND TO COLUMN AND BEAM WITH 1/4" FILLET WELD.
- 8 3/4" THICK GUSSET PLATE SHOP WELDED TO BEAM WITH CONTINUOUS 5/16" FILLET WELD EACH SIDE OF PLATE. FIELD WELD TO COLUMN WITH CONTINUOUS 5/16" FILLET WELD ON EACH SIDE OF PLATE.

CONSULTANTS:
Monsieur & Associates, LLC
CABDO Landscape Architecture, LLC
Fox-Nesbit Engineering, Inc.
S&S O'Brien
Mechanical Engineering
Associated Design Group, Inc.
Electrical Engineering
Specialty Architecture

ISSUE FOR BID
LOUISIANA STATE UNIVERSITY
ALEXANDRIA
DOWNTOWN HEALTH SERVICES CENTER
800 JACKSON ST.
ALEXANDRIA, LA 71301

PROJECT # 19-402-23-01 WBS: F. 19002489
ARCH PROJECT # 2023.20 / 1931.00-23
SITE ID: NEW SITE CODE: 6-40-23
DATE OCTOBER 10, 2023
Ashe Broussard Weinzettl Architects, LLP
Tipton Associates APAC, A Joint Venture
301 Jackson Street, Suite 205
Alexandria, LA 71301

NO.	REVISION	DATE



KEYPLAN

FOX NESBIT
BATON ROUGE NEW ORLEANS
RUSTON LAFAYETTE DESTIN
225-293-8505 www.fox-nesbit.com
© 2025 24724 R-24 B360

BRACED FRAME
ELEVATIONS AND
DETAILS

S304