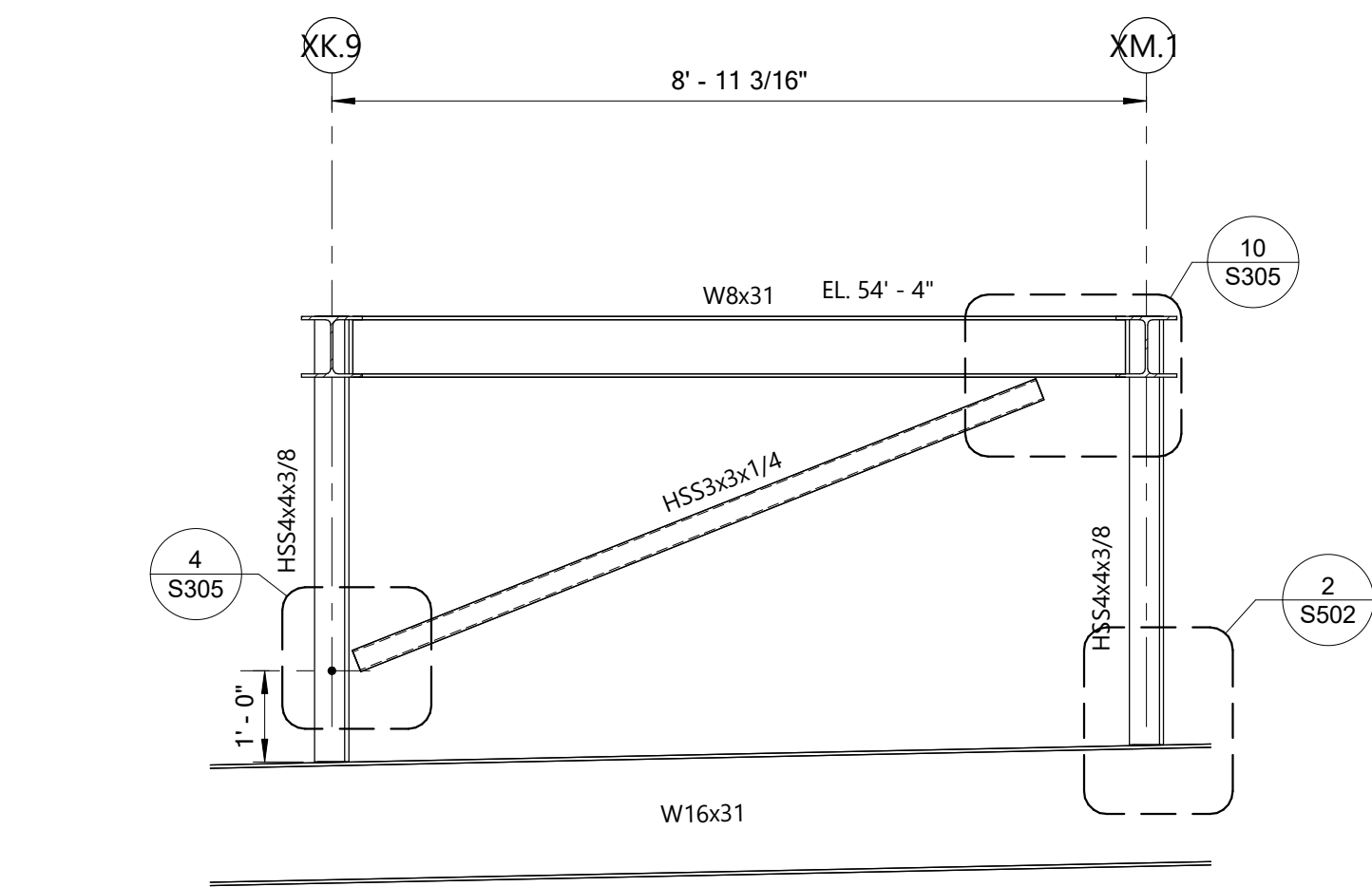
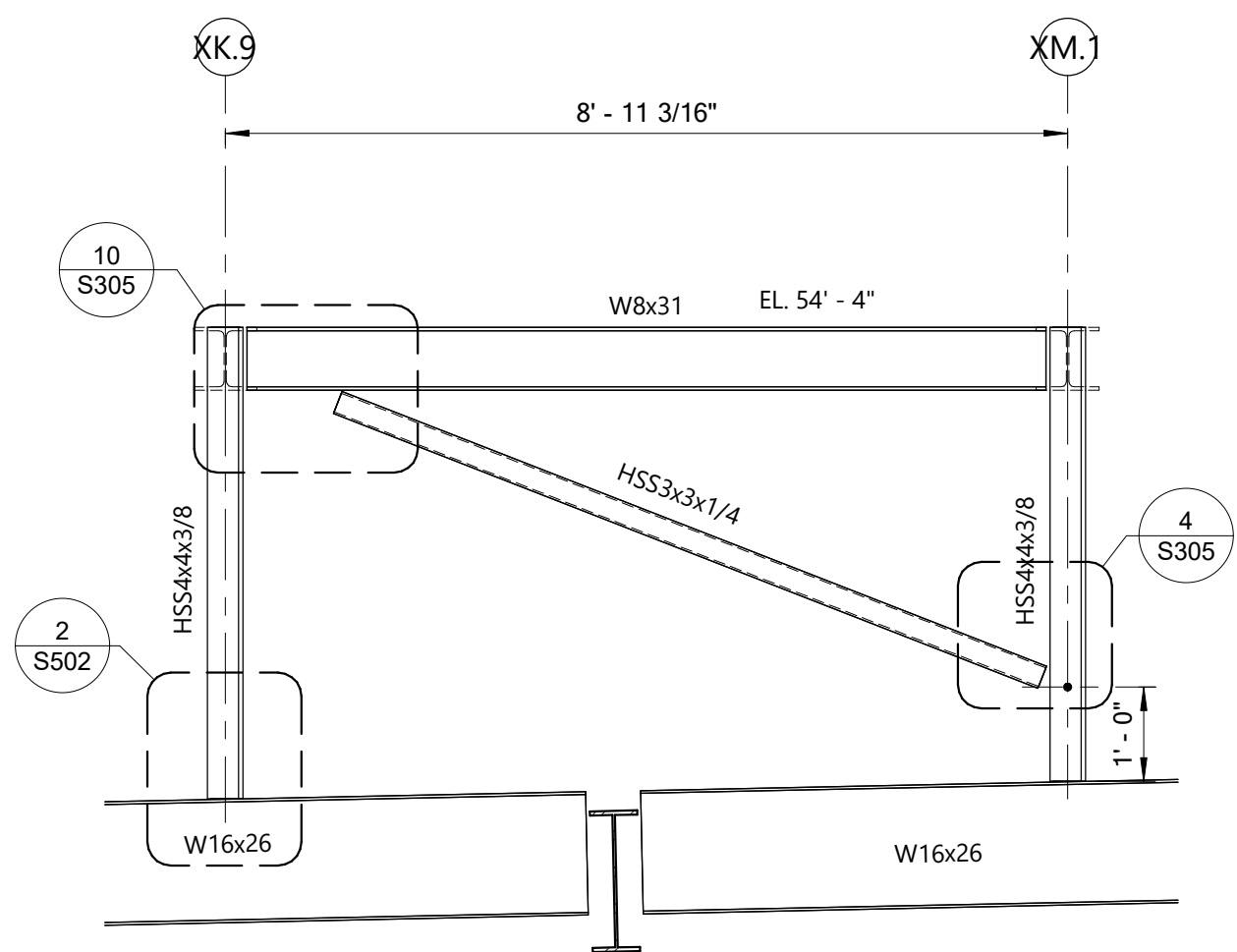


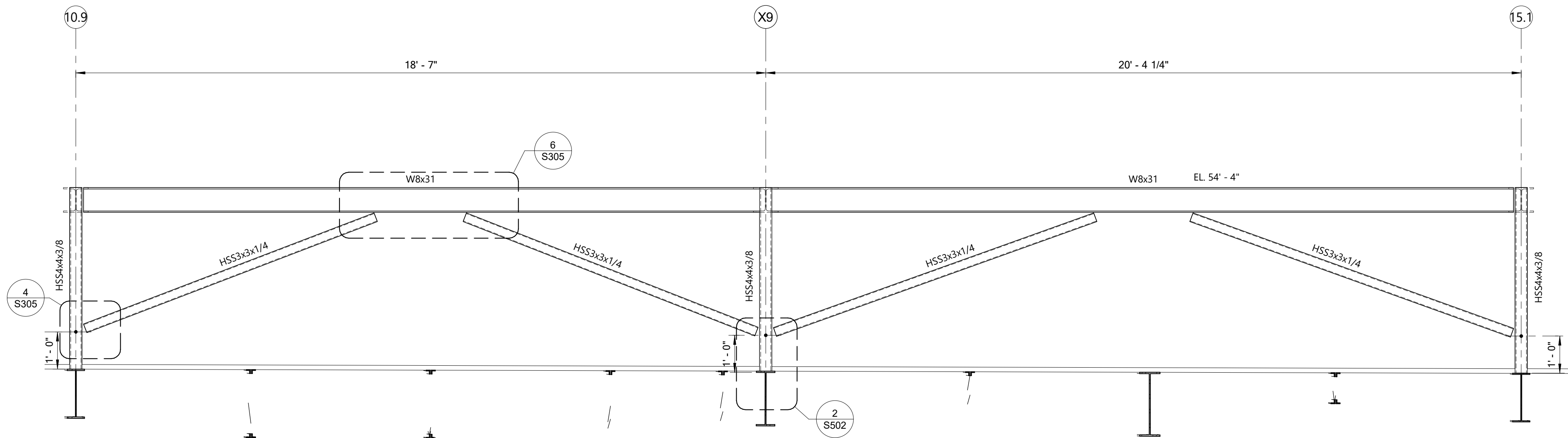
1 Braced Frame BF-1.9 Along Line 1.9
1/4" = 1'-0"



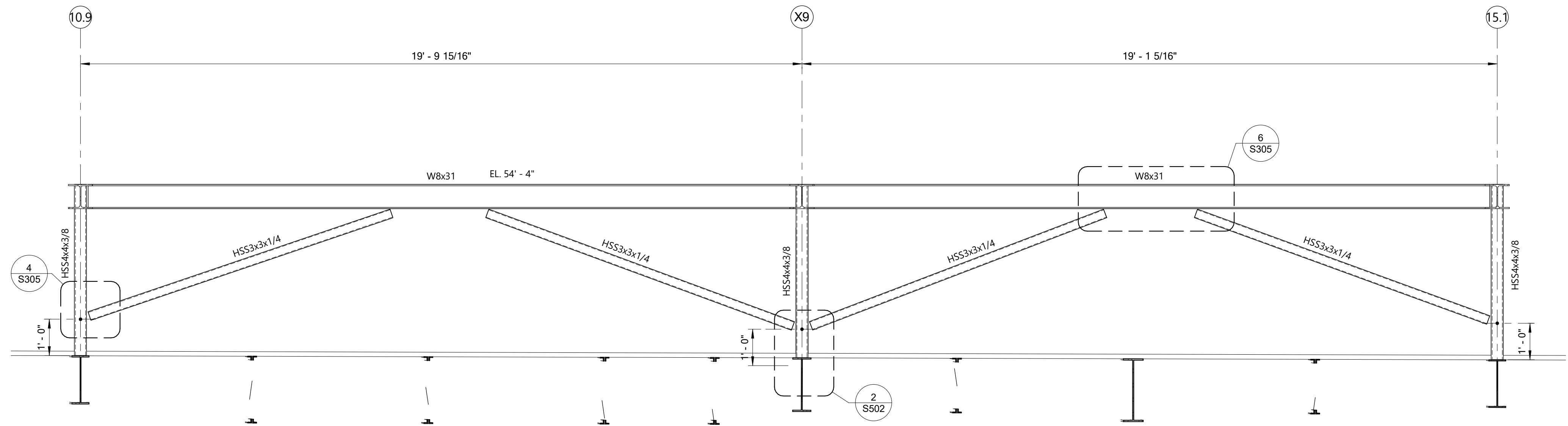
2 Braced Frame BF-10.9 Along Line 10.9
1/2" = 1'-0"



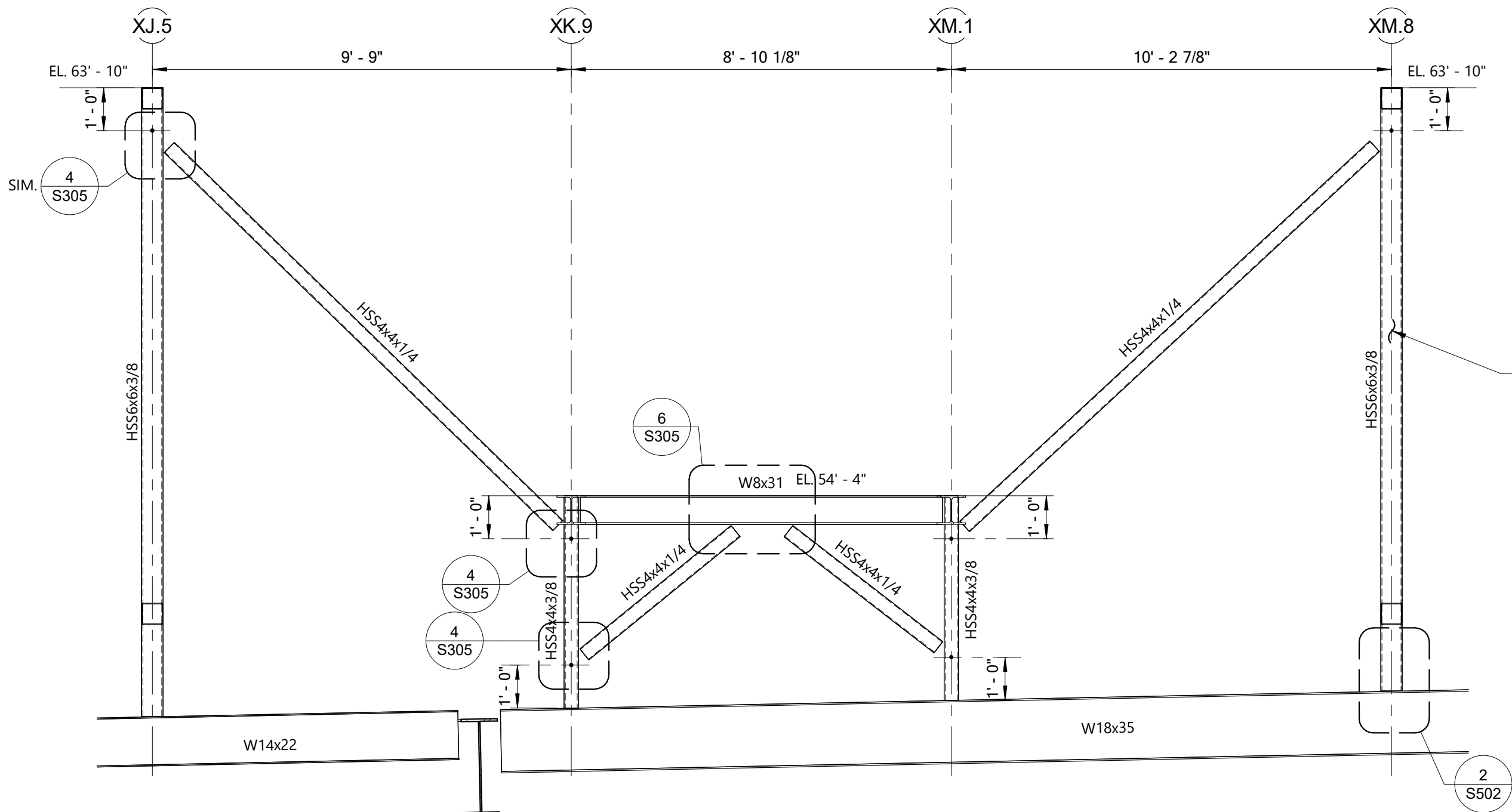
3 Braced Frame BF-15.1 Along Line 15.1
1/2" = 1'-0"



4 Braced Frame BF-XK.9 Along Line XK.9
1/2" = 1'-0"



5 Braced Frame BF-XM.1 Along Line XM.1
1/2" = 1'-0"



6 Braced Frame BF-X9 Along Line X9
3/8" = 1'-0"

INFILL BETWEEN SCREENWALL SPANDRELS WITH CFMF DESIGNED AND PROVIDED BY CFMF SUPPLIER AS REQUIRED. PROVIDE BLOCKING AT ALL WALL PANEL JOINTS FOR WALL PANEL SUPPORT WHERE REQUIRED.

COOLING TOWER & ENCLOSURE GALVANIZING NOTE:

ALL STRUCTURAL STEEL SUPPORTING COOLING TOWERS AND COOLING TOWER ENCLOSURE WALLS (INCLUDING COLUMNS, BEAMS, CONNECTION PLATES, ANCHOR BOLTS, ETC), SHALL BE HOT DIPPED GALVANIZED PER REQUIREMENTS IN SPECIFICATION 051200. TOUCH UP ALL BREAKS IN THE GALVANIZE WITH 3 LAYERS OF ZINC RICH COLD GALVANIZE COMPOUND PER SPECIFICATION 051200.

FOX NESBIT

BATON ROUGE NEW ORLEANS
RUSTON LAFAYETTE DESTIN
225.293.6505 www.fox-nesbit.com
© 2025 24724 R-24 B360