

ROOF FRAMING PLAN NOTES AND LEGEND:

ROOF DECK = 1.5B 22 GAGE GALV. METAL ROOF DECK.

E.O.A. = EDGE OF ANGLE. PROVIDE CONTINUOUS EDGE ANGLE ALONG EDGES WHERE THIS DIMENSION IS INDICATED. SEE DETAIL 1/S501 FOR MORE INFORMATION.

E.O.D. = EDGE OF DECK. EDGE ANGLE IS NOT REQUIRED ALONG EDGES WHERE THIS DIMENSION IS INDICATED.

B.O.C. = BEAM OVER COLUMN CONNECTION -
RE: 7/S502.

ALL OPEN WEB STEEL JOISTS SHALL BE EQUALLY SPACED IN FRAMING BAYS BETWEEN GRIDLINE UNLESS NOTED OTHERWISE. SEE DETAIL 10/S5 FOR REQUIRED STAGGERING OF JOISTS AT ALIGNED LOCATIONS OVER GIRDER BEAMS.

[HB] = HOIST BEAM FOR ELEVATOR. GC TO COORDINATE AND VERIFY COMPATIBILITY WITH ELEVATOR SUPPLIER.

▶ = INDICATES MOMENT CONNECTION PER 12/S503, U.N.O.

SEE DETAILS 5/S500 AND 7/S501 FOR TYPICAL REQUIREMENTS AT ROOF PENETRATIONS.

ALL OVERFLOW DRAIN INLETS ON ROOF SHALL
SET TWO INCHES ABOVE PRIMARY DRAIN INLET

[A] = PROVIDE HSS COLLECTORS MEMBERS PER 11/S502 ON TOP OF BEAM BETWEEN JOISTS AT BEAM INDICATED.

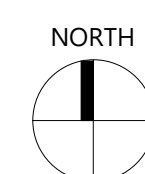
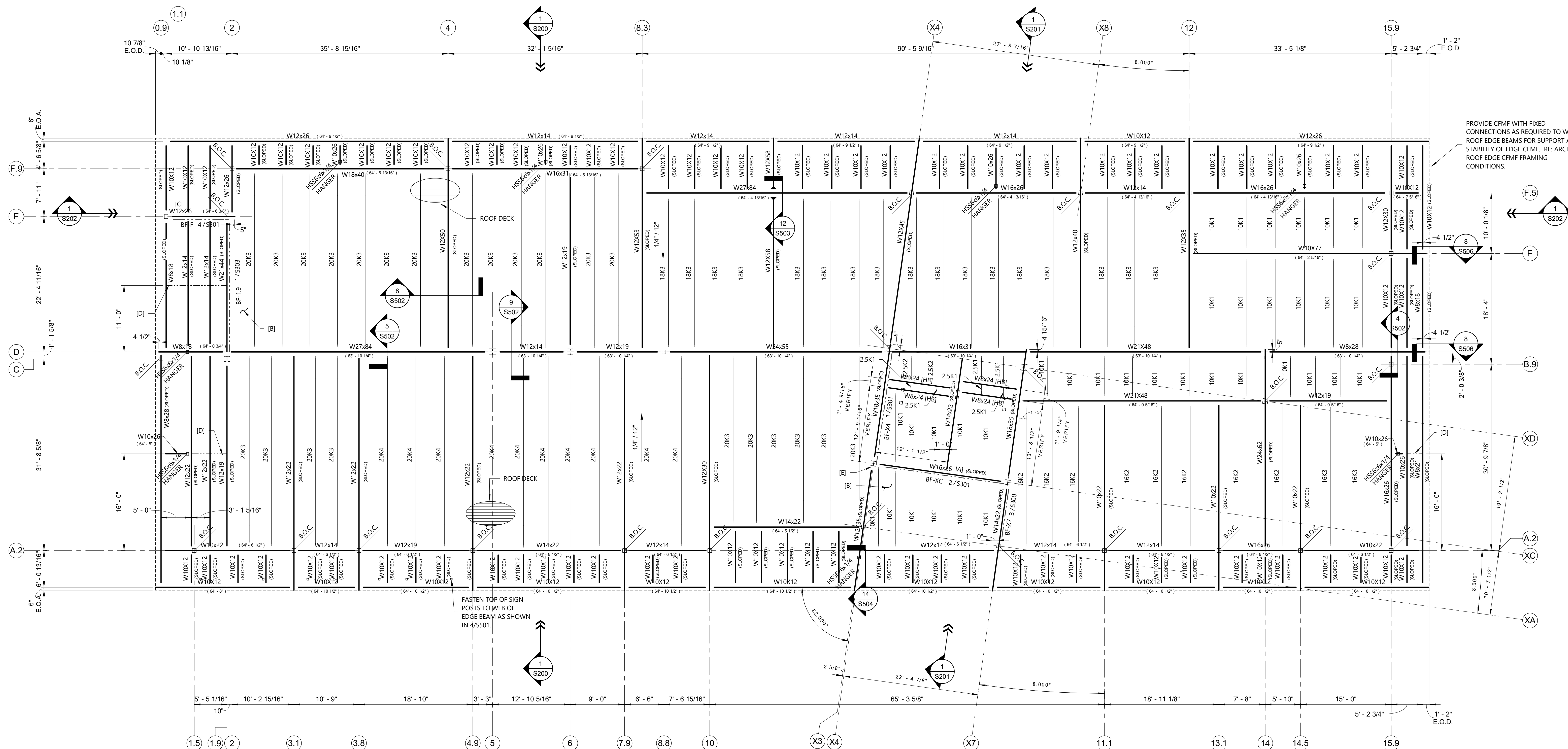
[B] = AT ROOF AREAS INDICATED BELOW, PROVIDE 36/14 DECK FASTENING PATTERN (DOUBLE SUPPORT FASTENERS) WITH (8) SIDEL ATTACHMENTS. RE: METAL DECKING REQUIREMENTS ON S600 FOR TYPICAL

- AREA BOUND BY GRIDLINES F.9, D, 0.9, AND 3
- AREA BOUND BY GRIDLINES X4, X7, A2, AND D

[C] = FASTEN DECK FLUTE ALONG LENGTH OF BEAM INDICATED WITH 5/8" PUDDLE WELDS AT O.C. MAX.

[D] ■ INDICATES X-BRACING BETWEEN BEAMS PER DETAIL 4/S506.

[E] = FASTEN OFFSET BEAM TO WF COLUMN WITH SHEAR PLATE CONNECTION SIMILAR TO 2/S500.



1 ROOF FRAMING PLAN

$$\overline{1/8'' = 1'-0''}$$

FOX-NESBIT

BATON ROUGE NEW ORLEANS
RUSTON LAFAYETTE DESTIN
225:293:6595 www.fox-nesbit.com
© 2025 24724 R-24 B360