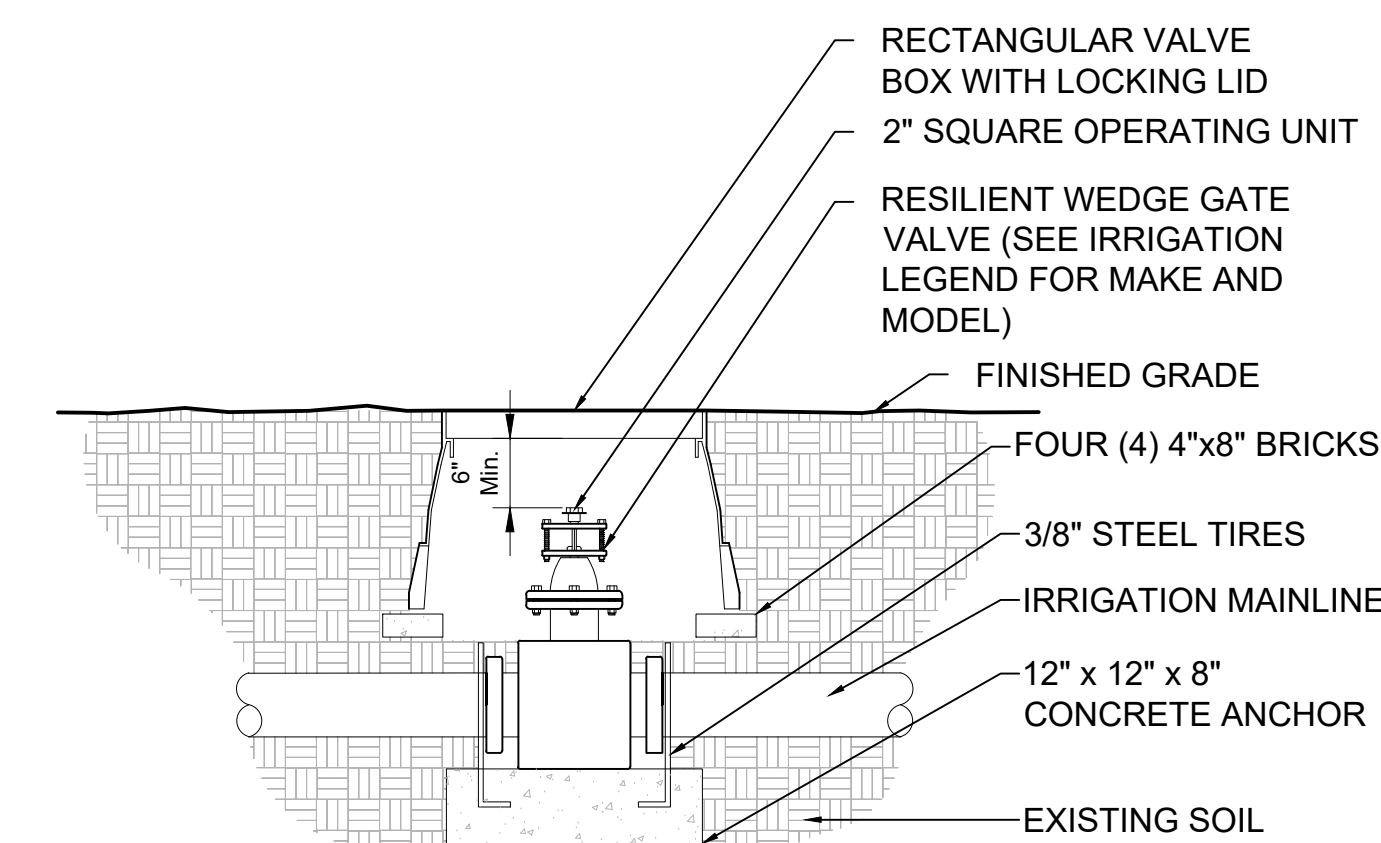


A IRRIGATION POINT OF CONNECTION SCHEMATIC

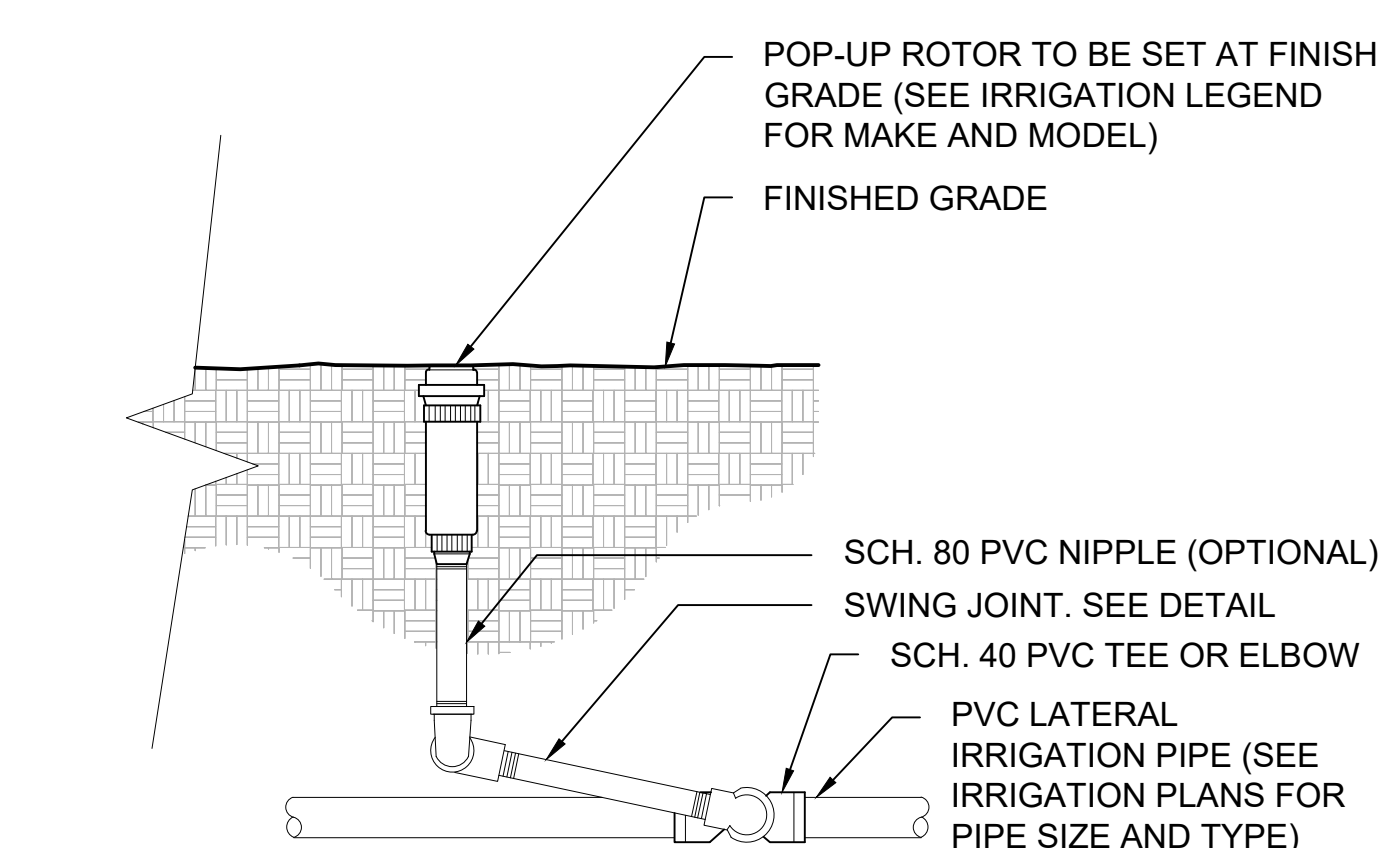
SCALE: 1" = 1'-0"



- Notes:
- 1- INSTALL GATE VALVE PER MANUFACTURER'S SPECIFICATIONS AND RECOMMENDATIONS
 - 2- VALVE BOX SHALL BE WRAPPED WITH MINIMUM 3 MIL. THICK PLASTIC AND SECURE IT TO VALVE BOX USING DUCT TAPE OR ELECTRICAL TAPE.
 - 3- VALVE BOX SHALL BE LOCATED IN PLANTING AREA

E GATE VALVE AND ANCHOR

SCALE: 1" = 1'-0"

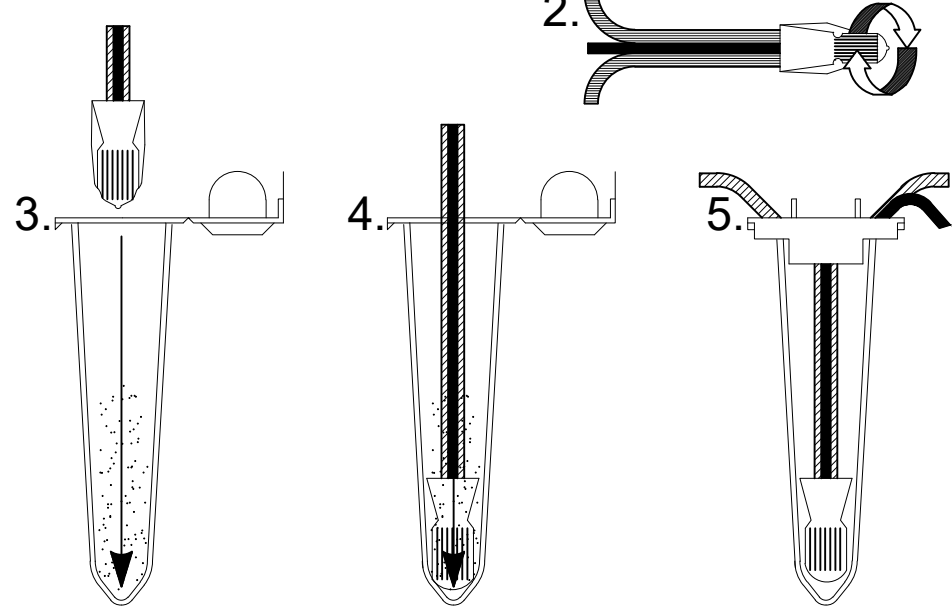


- NOTES:
- 1- ALL THREADED CONNECTION POINTS BETWEEN SCH. 40 PVC AND SCH. 80 PVC FITTING SHALL BE INSTALLED USING TEFLON TAPE
 - 2- CONTRACTOR SHALL COMPACT SOIL AROUND ROTOR AND RISER PRIOR TO PLANTING, PLUGGING, SEEDING, OR LAYING OF SOD

J ROTOR SPRAYHEAD

SCALE: 1 1/2" = 1'-0"

1. STRIP ENDS OF WIRE
2. SECURE WIRES INTO WIRE NUT
3. INSERT WIRE NUT INTO GEL-FILLED TUBE
4. POSITION WIRES INTO CHANNELS
5. CLOSE SPLICE KIT FOR SECURED SEAL

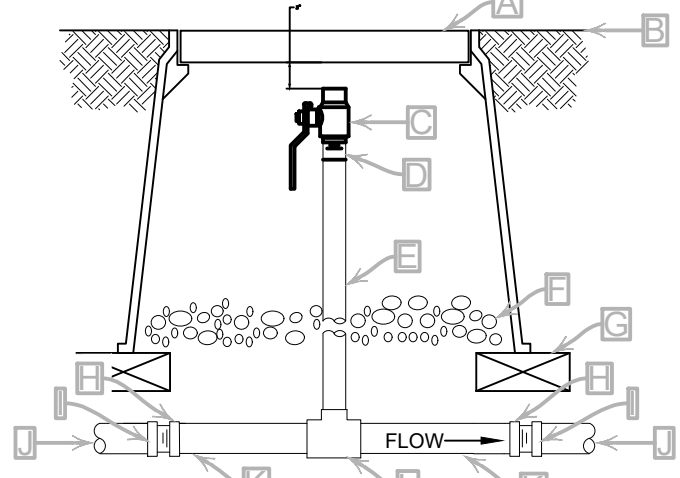


- NOTE:
1. VISUALLY CHECK THAT CONNECTOR IS BELOW LOCKING "FINGERS".

O WIRE SPLICE DETAIL

SCALE: 6" = 1'-0"

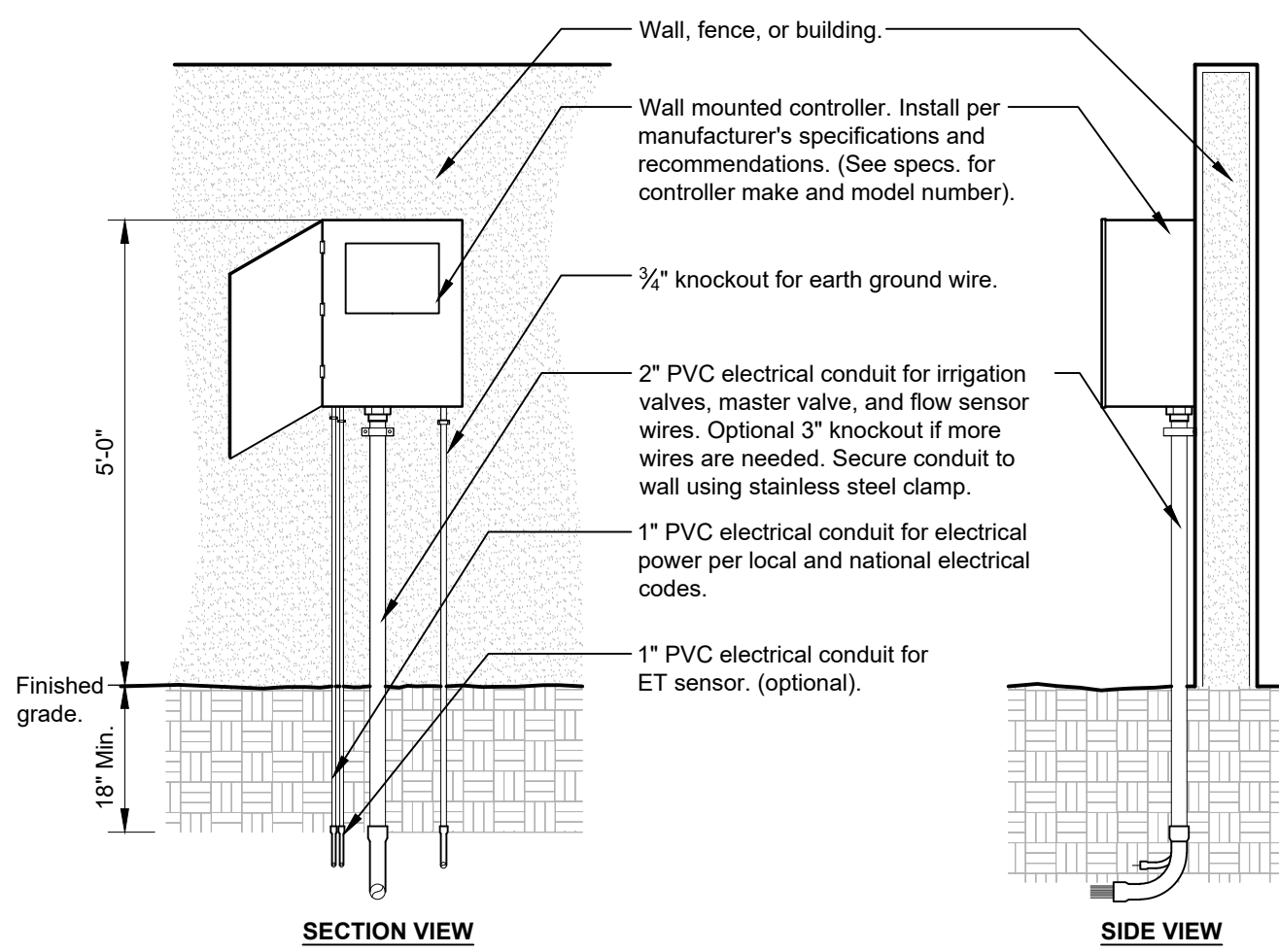
- 12" STANDARD VALVE BOX WITH COVER
- FINISH GRADE/TOP OF MULCH
- 1" BRONZE BALL VALVE FEMALE THREADED ENDS
- 1" COPPER MALE ADAPTER
- 1" COPPER PIPE (LENGTH AS REQUIRED)
- 3" MIN. DEPTH OF 3/4" WASHED GRAVEL
- BRICK (1 OF 4)
- COPPER FEMALE THREADED ADAPTER
- SCH. 40 PVC MALE THREADED ADAPTER
- PVC MAINLINE
- COPPER PIPE
- COPPER TEE



- NOTE:
1. FURNISH NOMINAL PIPE AND FITTING SIZES IDENTICAL WITH NOMINAL TAP SIZE UNLESS OTHERWISE NOTED.

F BLOWOUT ASSEMBLY

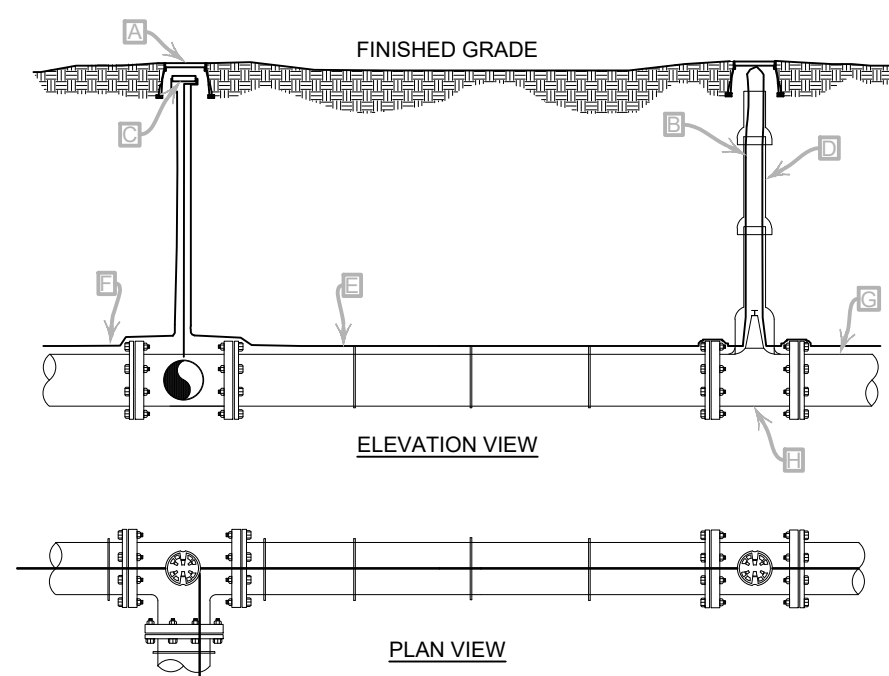
SCALE: 1 1/2" = 1'-0"



- Notes:
- 1- Common and controller wire to be bundled using electrical tape at 10'-0" on center.
 - 2- Grounding rods shall be located between 8"- 0" to 12'- 0" away from the controller. Grounding rods shall be 3/4" in diameter x 8' in length. Connect the grounding rod to the controller using 6 gauge bare copper wire or per the manufacturer's specifications. See grounding rod detail.
 - 3- ET Station shall be installed no further than 90' away from the controller and a minimum of 15' off of the ground, out from under any overhead obstructions such as, but not limited to, building overhangs, trees, or utilities.

K WALL MOUNTED CONTROLLER

SCALE: 1/2" = 1'-0"

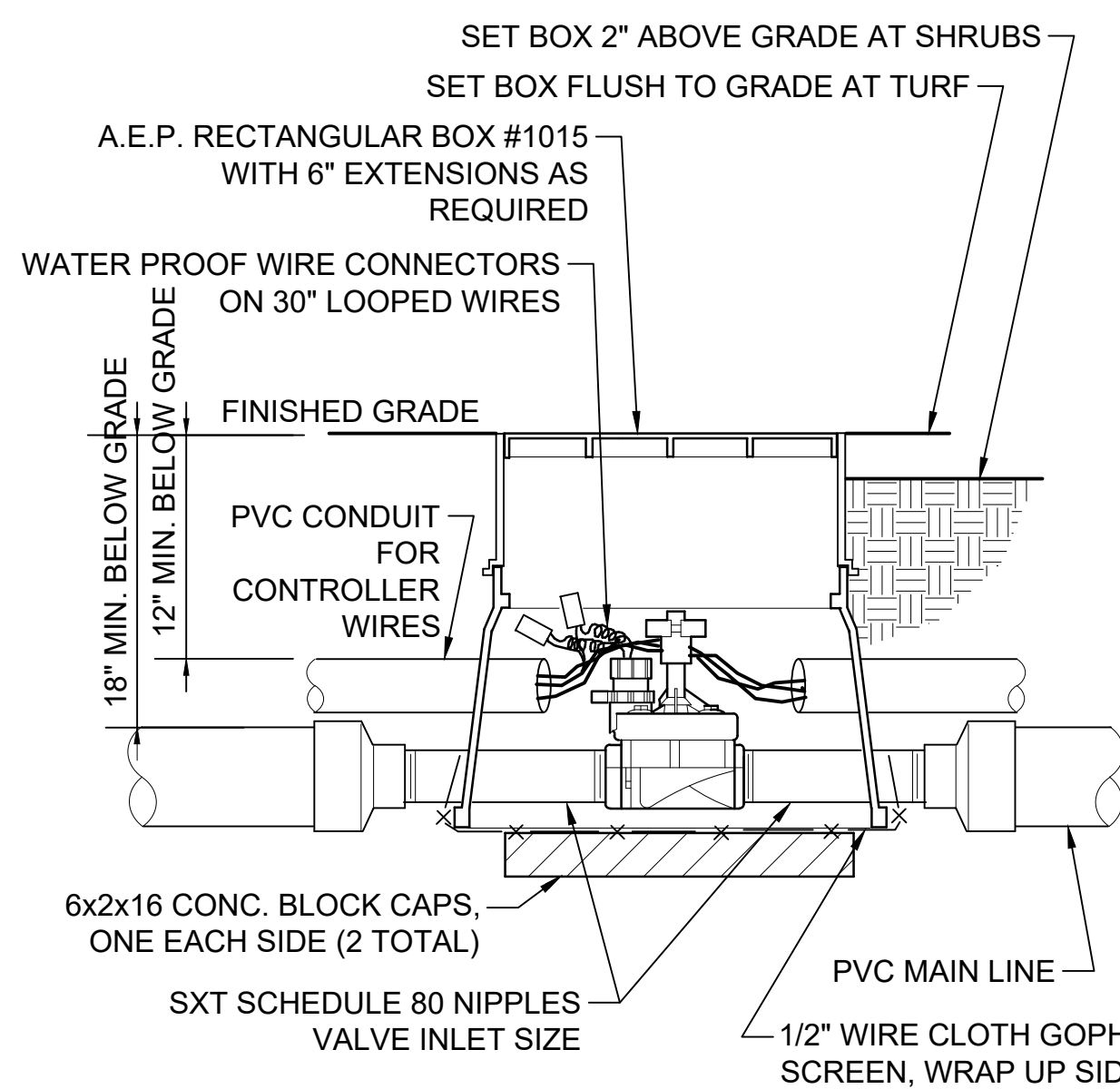


- 10" ROUND VALVE BOX
- INSTALL TRACING WIRE TO THE TOP OF VALVE BOX
- WATER PROOF CONNECTION (SEE SPECIFICATIONS)
- PIPE SLEEVE SEE VALVE DETAIL
- TAPE COPPER WIRE TO TOP OF PIPE EVERY 10 FT.
- CONTINUOUS LOOP COPPER TRACING WIRE (SEE SPECIFICATIONS)
- PVC PIPE
- TYP. VALVE

- NOTE:
1. COPPER TRACING WIRE WILL START AT THE MASTER VALVE AND WILL BE ROUTED WITH ALL MAINLINE PIPE.
 2. SPLICE TRACING WIRE IN IRRIGATION MAINLINE COMPONENT VALVE BOXES WHEN POSSIBLE. OTHERWISE, PLACE SPLICE IN SEPARATE VALVE BOX.

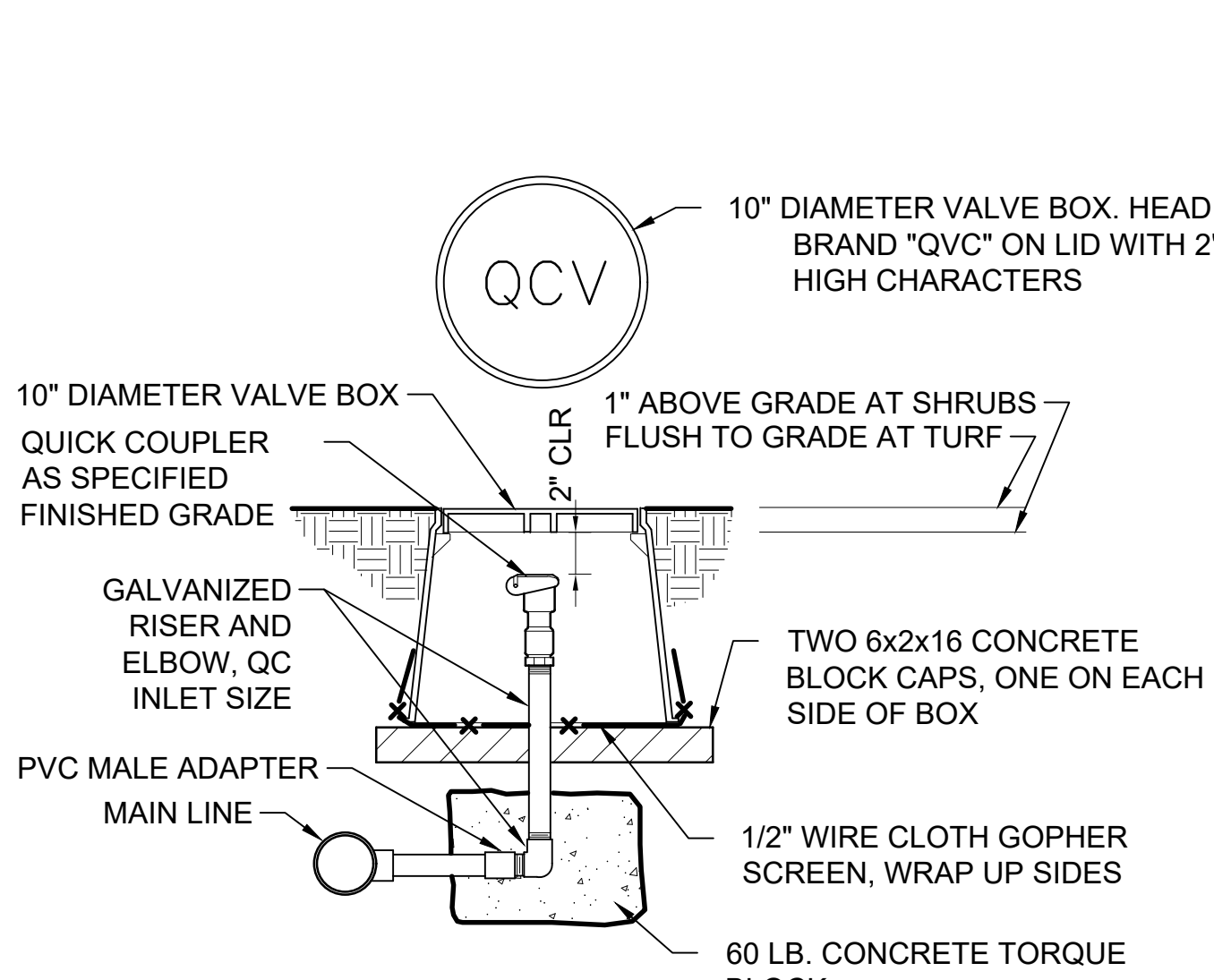
P TRACING WIRE DETAIL

SCALE: 1/4" = 1'-0"



B MASTER CONTROL VALVE

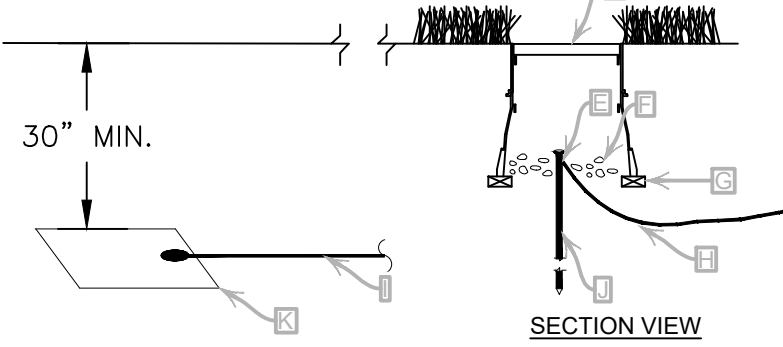
SCALE: 1 1/2" = 1'-0"



G QUICK COUPLER VALVE IN BOX

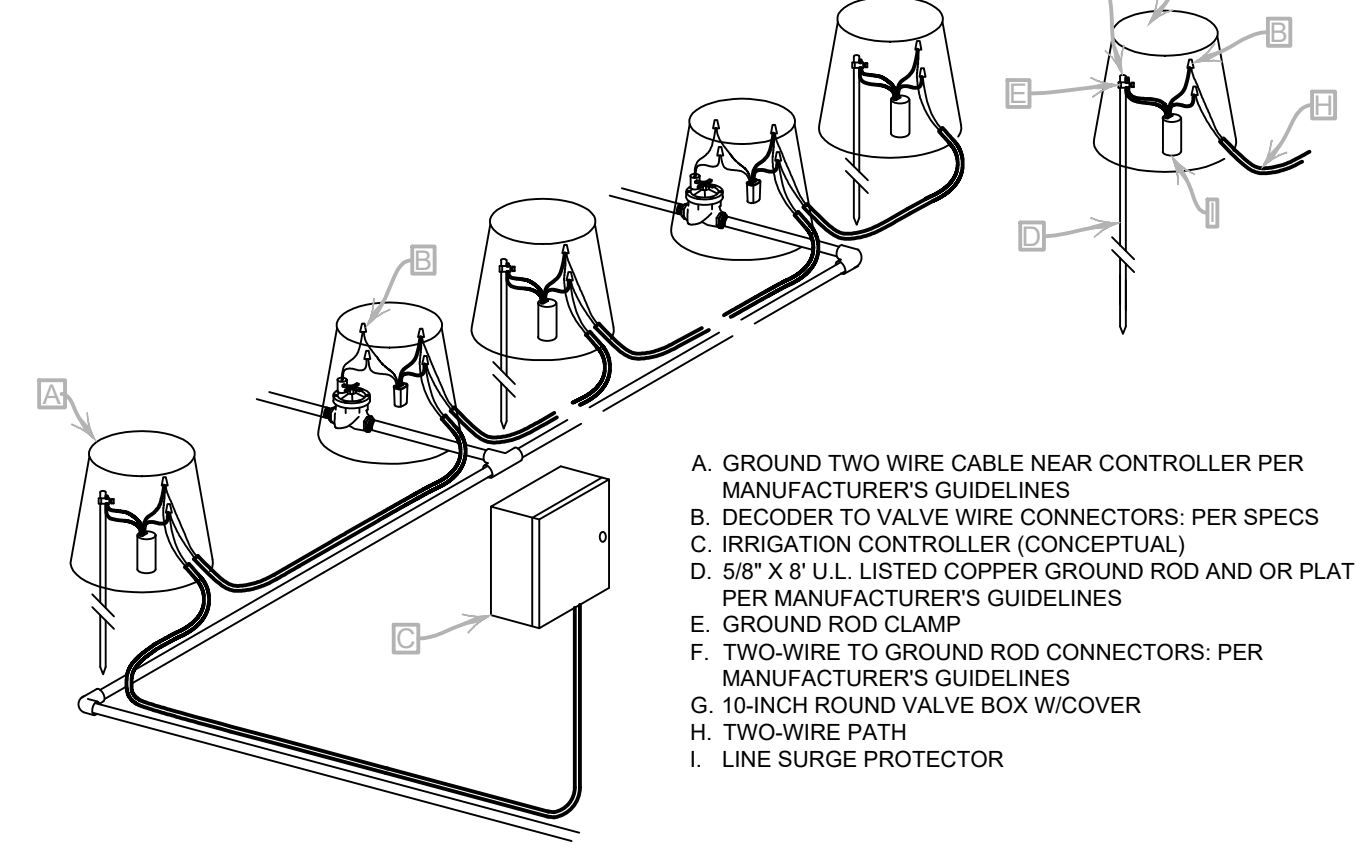
SCALE: 1 1/2" = 1'-0"

- IRRIGATION CONTROLLER ASSEMBLY
- GROUNDING PLATE
- GROUNDING ROD
- 10" VALVE BOX WITH COVER
- CADWELD CONNECTION: PAGE
- 3" MINIMUM DEPTH OF 3/4" WASHED GRAVEL
- BRICK (1 OF 4)
- #6 AWG INSULATED COPPER GROUND WIRE FROM CONTROLLER
- #6 AWG INSULATED COPPER WIRE NO SHARP BENDS FROM CONTROLLER
- UL LISTED 80" X 10" COPPER GROUNDING ROD
- UL LISTED 4" X 96" COPPER GROUNDING PLATE



L CONTROLLER GROUNDING DETAIL

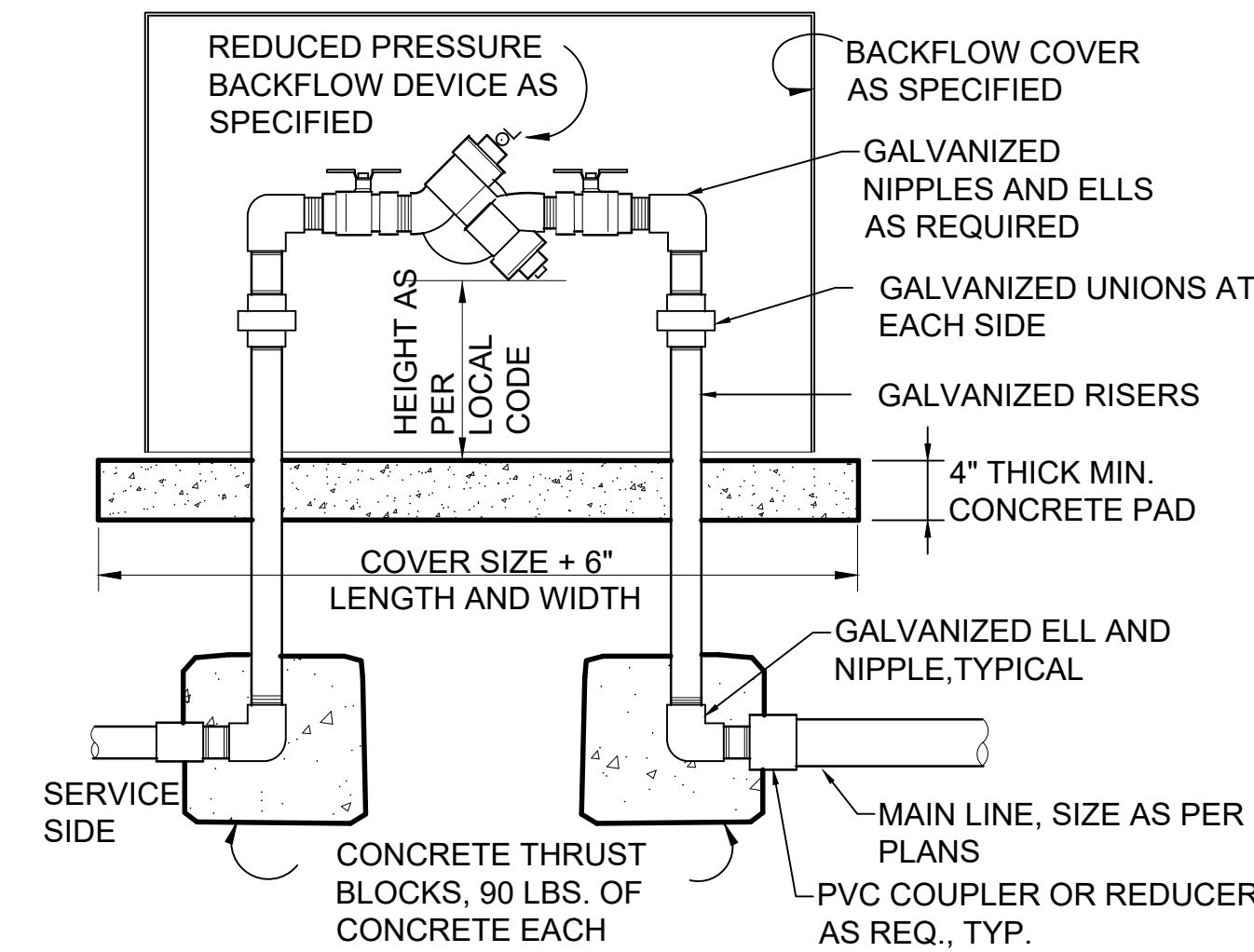
SCALE: 1/4" = 1'-0"



- NOTES:
1. ALL WIRE CONNECTION SHALL BE MADE WITH APPROVED CONNECTORS.
 2. MAKE ALL WIRE SPLICES IN VALVE BOXES.
 3. LEAVE A MINIMUM OF 36" EXTRA WIRE AT ALL SPLICE POINTS.
 4. TEST EARTH TO GROUND RESISTANCE AT ALL GROUND POINTS.
 5. EARTH TO GROUND RESISTANCE MUST MEET OR EXCEED MANUFACTURER REQUIREMENTS.
 6. INSTALL ALL GROUND ASSEMBLIES IN VALVE BOXES.
 7. INSTALL GROUNDING EQUIPMENT AS INDICATED ON THE IRRIGATION DOCUMENTS AND AS RECOMMENDED BY THE MANUFACTURER.

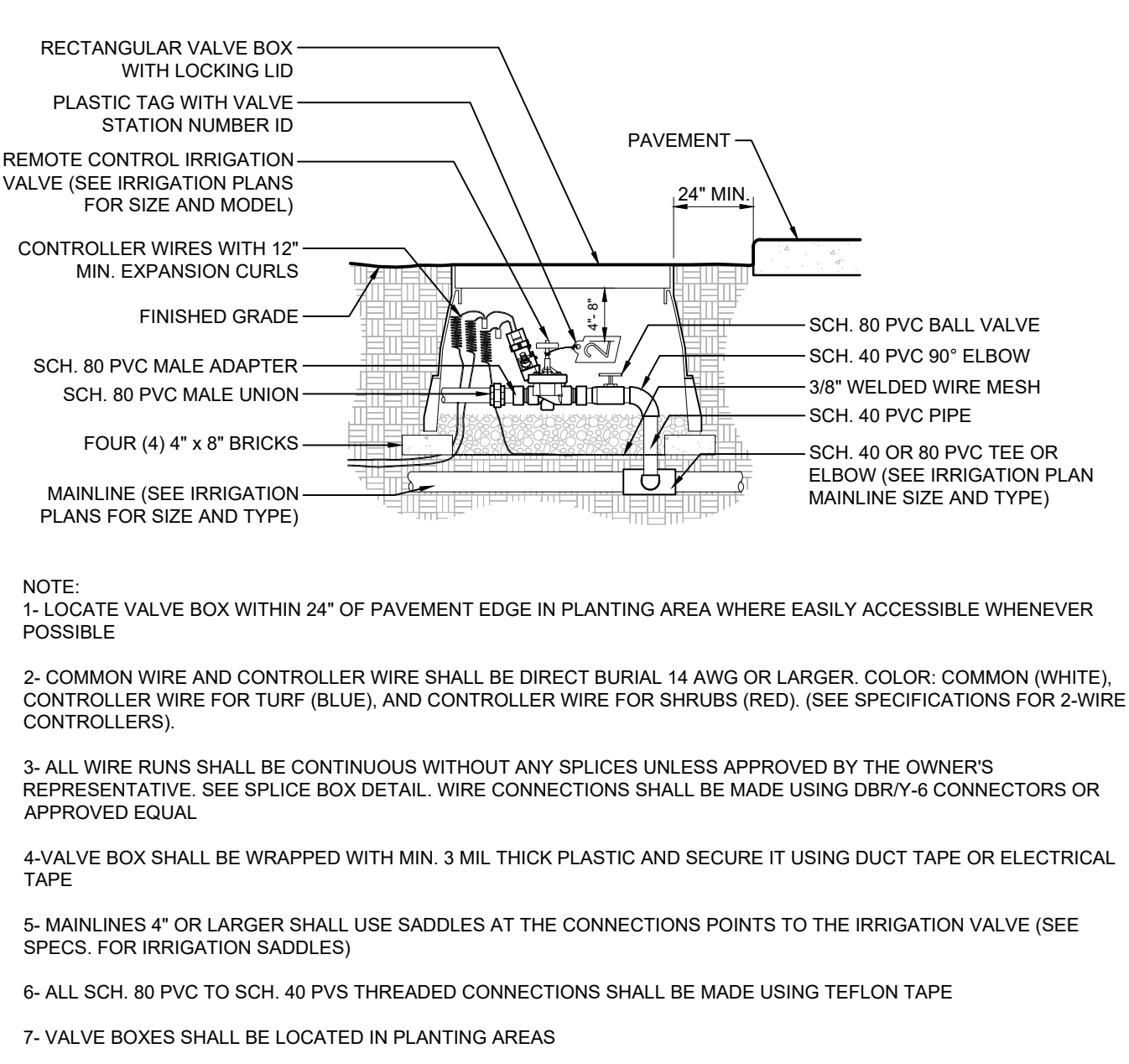
Q TWO WIRE SCHEMATIC

SCALE: 1" = 1'-0"



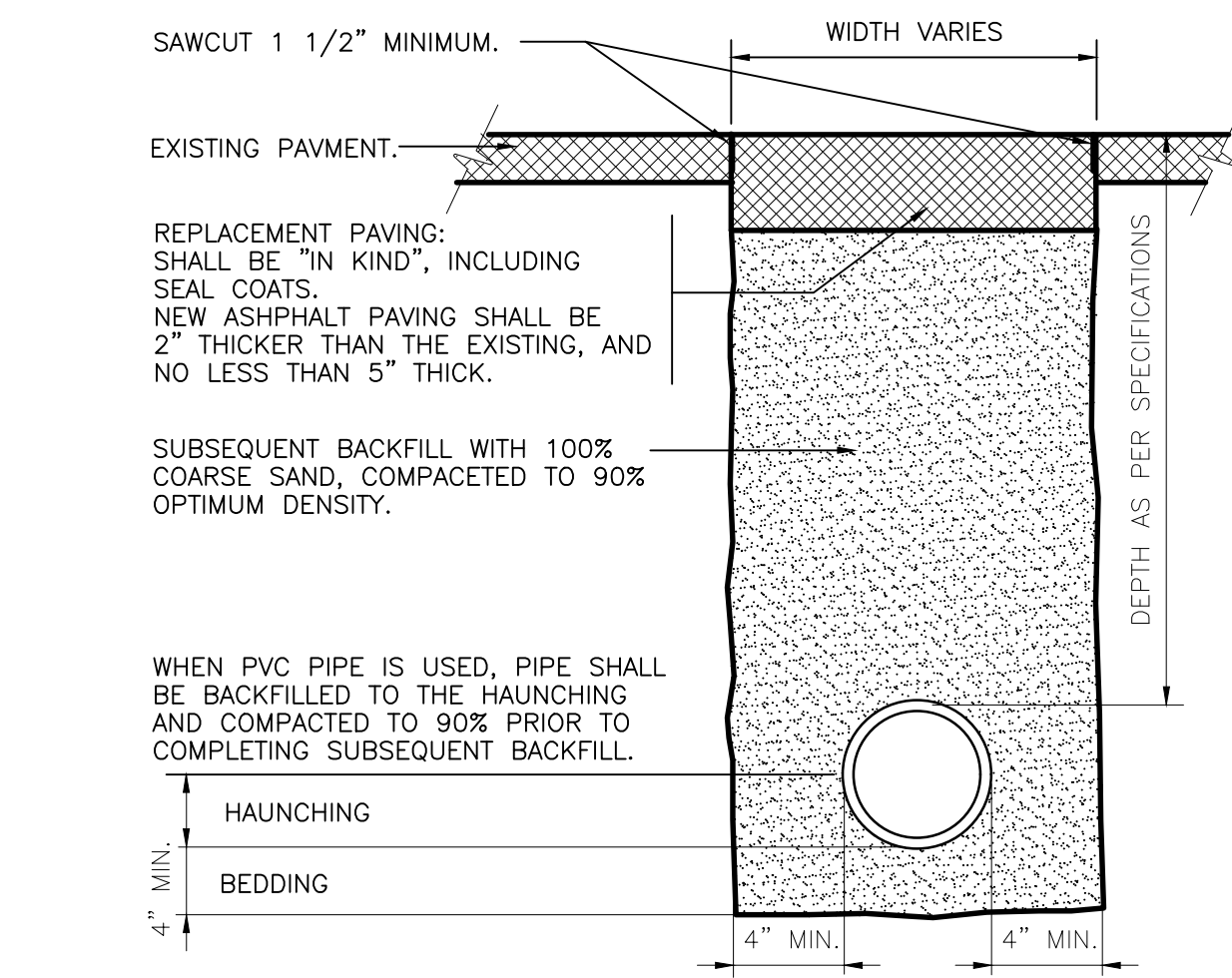
C RP BACKFLOW W/ENCLOSURE

SCALE: 1" = 1'-0"



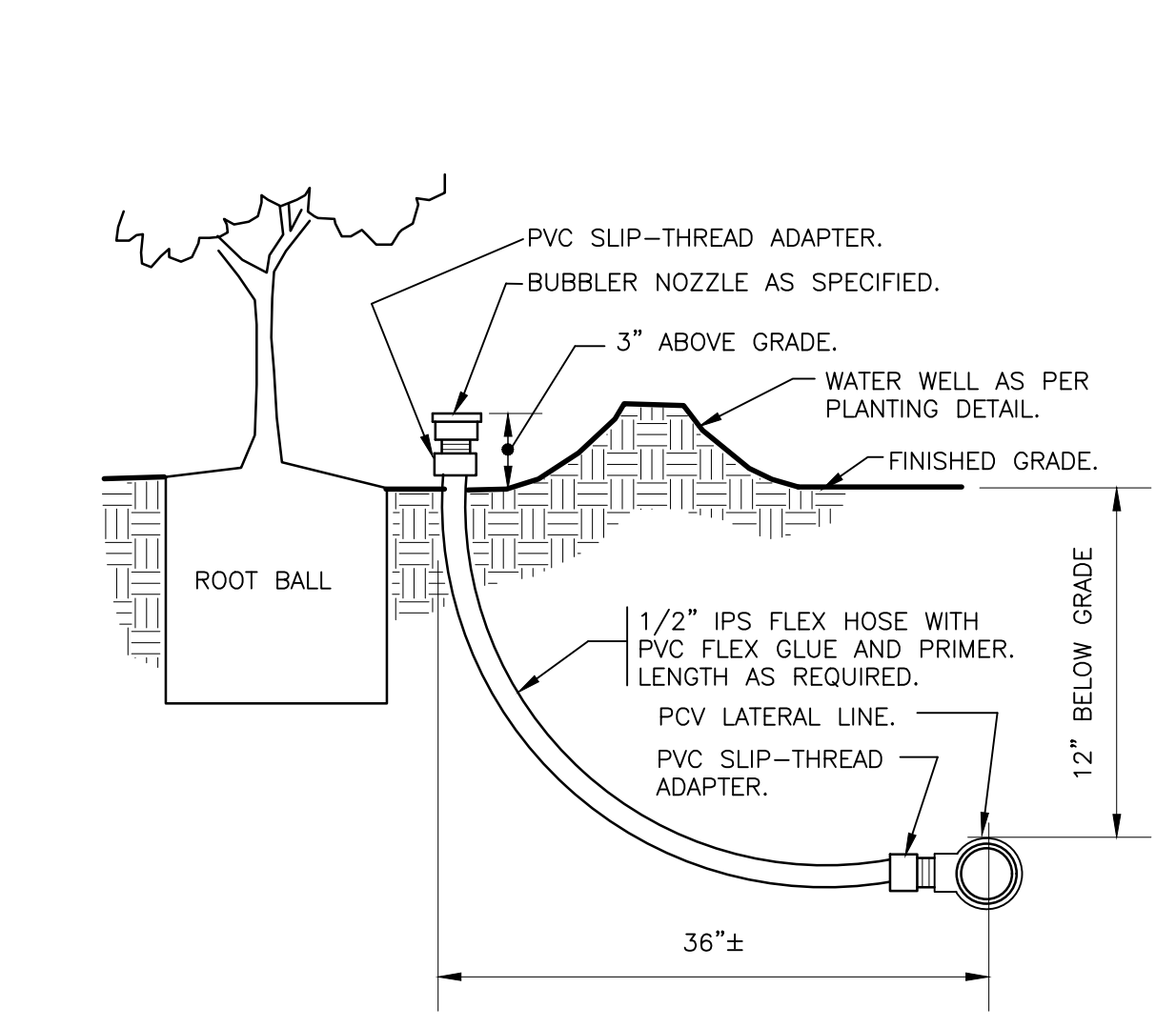
H REMOTE CONTROL IRRIGATION VALVE

SCALE: 1" = 1'-0"



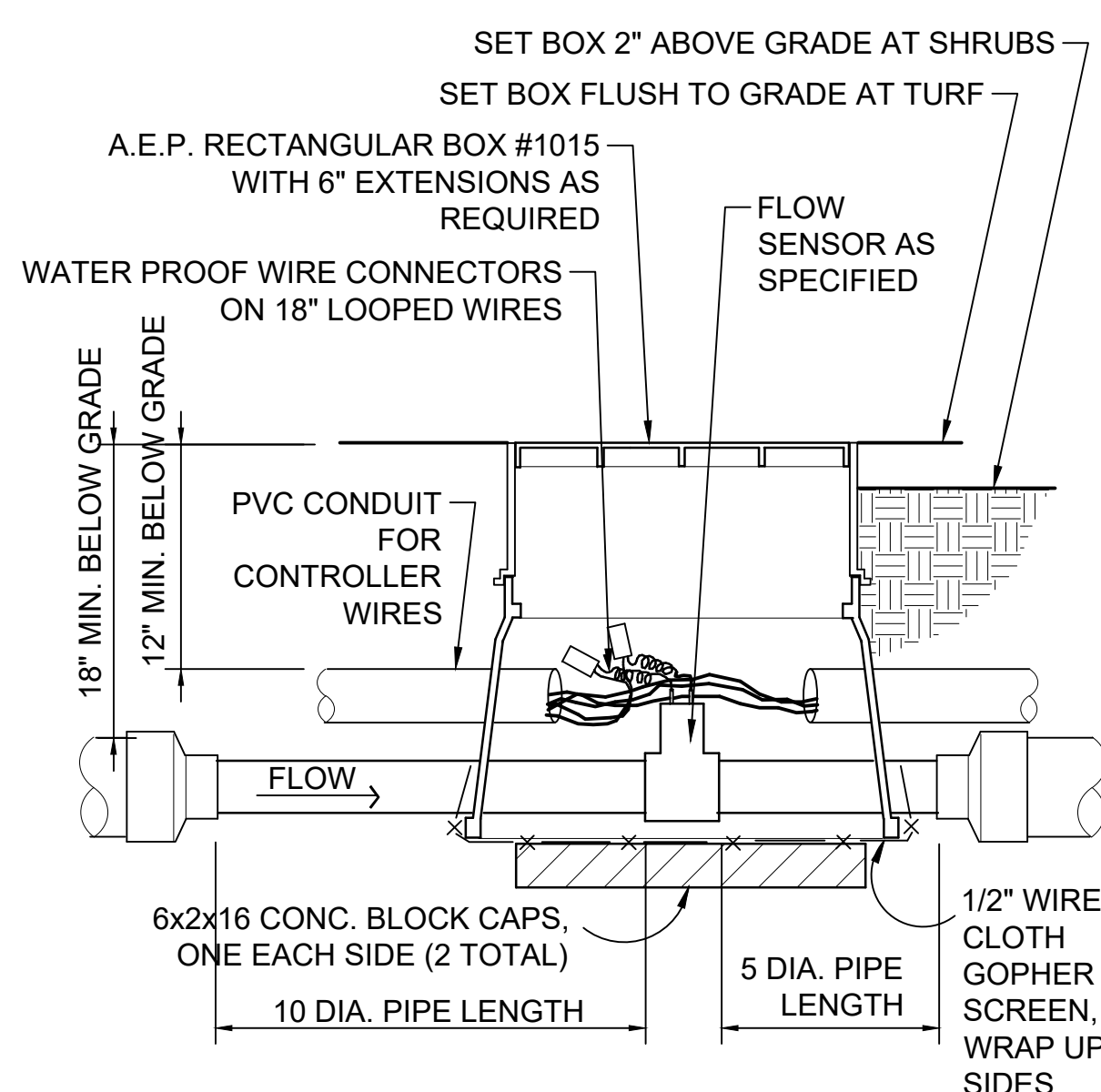
M TRENCH DETAIL AT ASPHALT PAVING

SCALE: 1 1/2" = 1'-0"



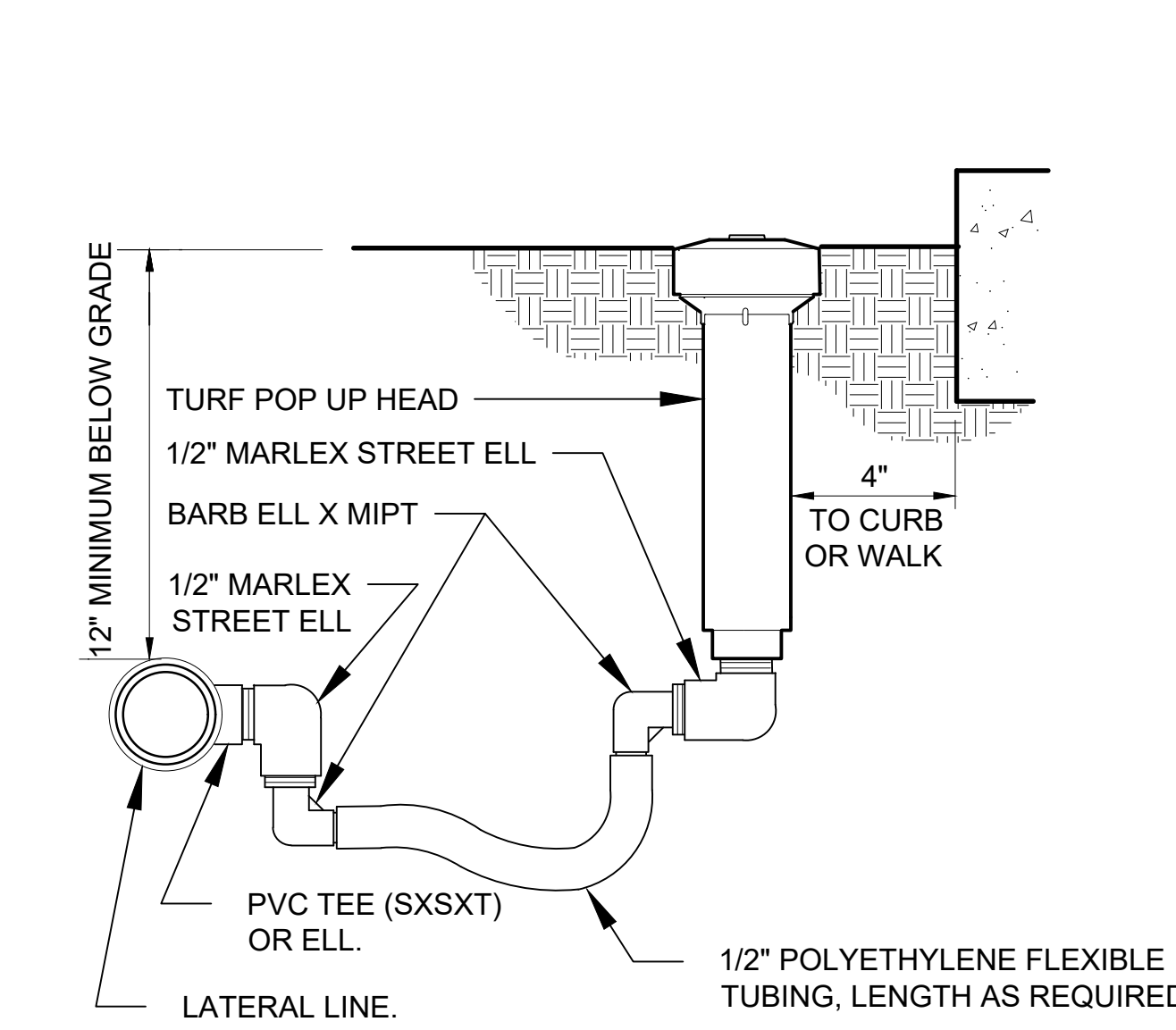
R BUBBLER ON FLEX RISER

SCALE: 3" = 1'-0"



D FLOW SENSOR ASSEMBLY

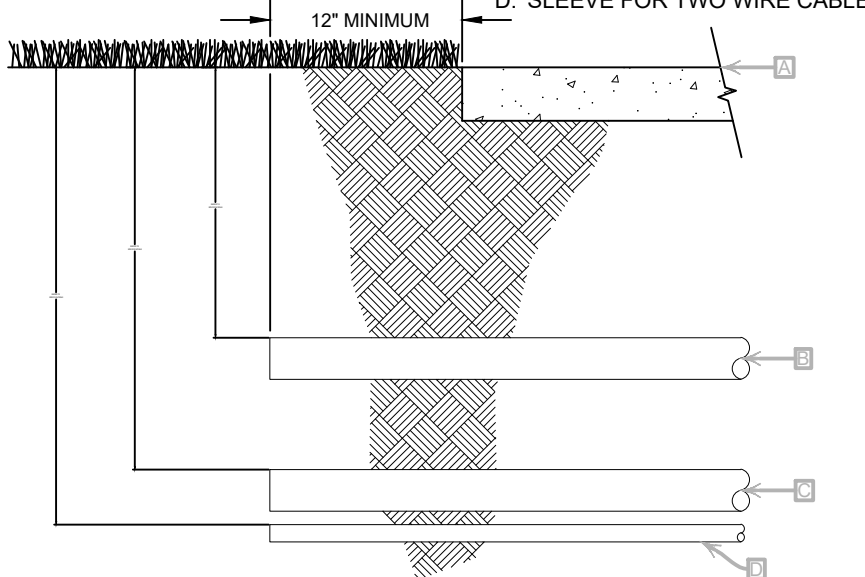
SCALE: 1 1/2" = 1'-0"



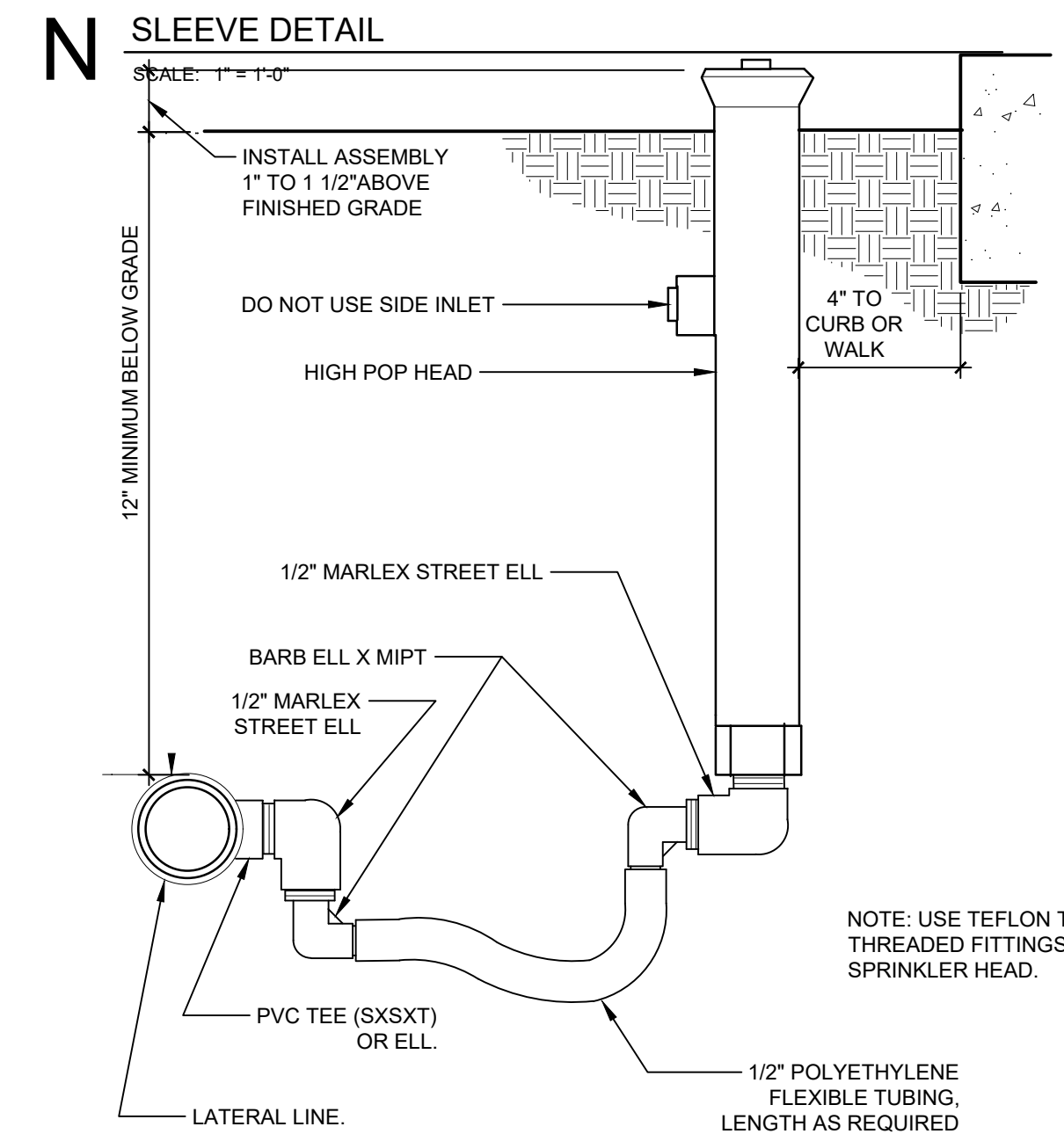
I TURF SPRAY FLEX ASSEMBLY

SCALE: 3" = 1'-0"

PIPE SIZE (INCHES)	MINIMUM SLEEVE SIZE (INCHES)
1	2
1.5	3
2	4
2.5	6



- NOTES:
1. INSTALL SLEEVE SO THAT ITS LOWEST ELEVATION OCCURS AT ONE OR BOTH ENDS - NOT ALONG ITS LENGTH.
 2. MINIMUM TWO WIRE CABLE SLEEVE SIZE IS 2-6 INCHES.



S SHRUB SPRAY FLEX ASSEMBLY

SCALE: 3" = 1'-0"