

1 LETTERING IN CAST STONE

SCALE: 3/4" = 1'-0"

NOTES:

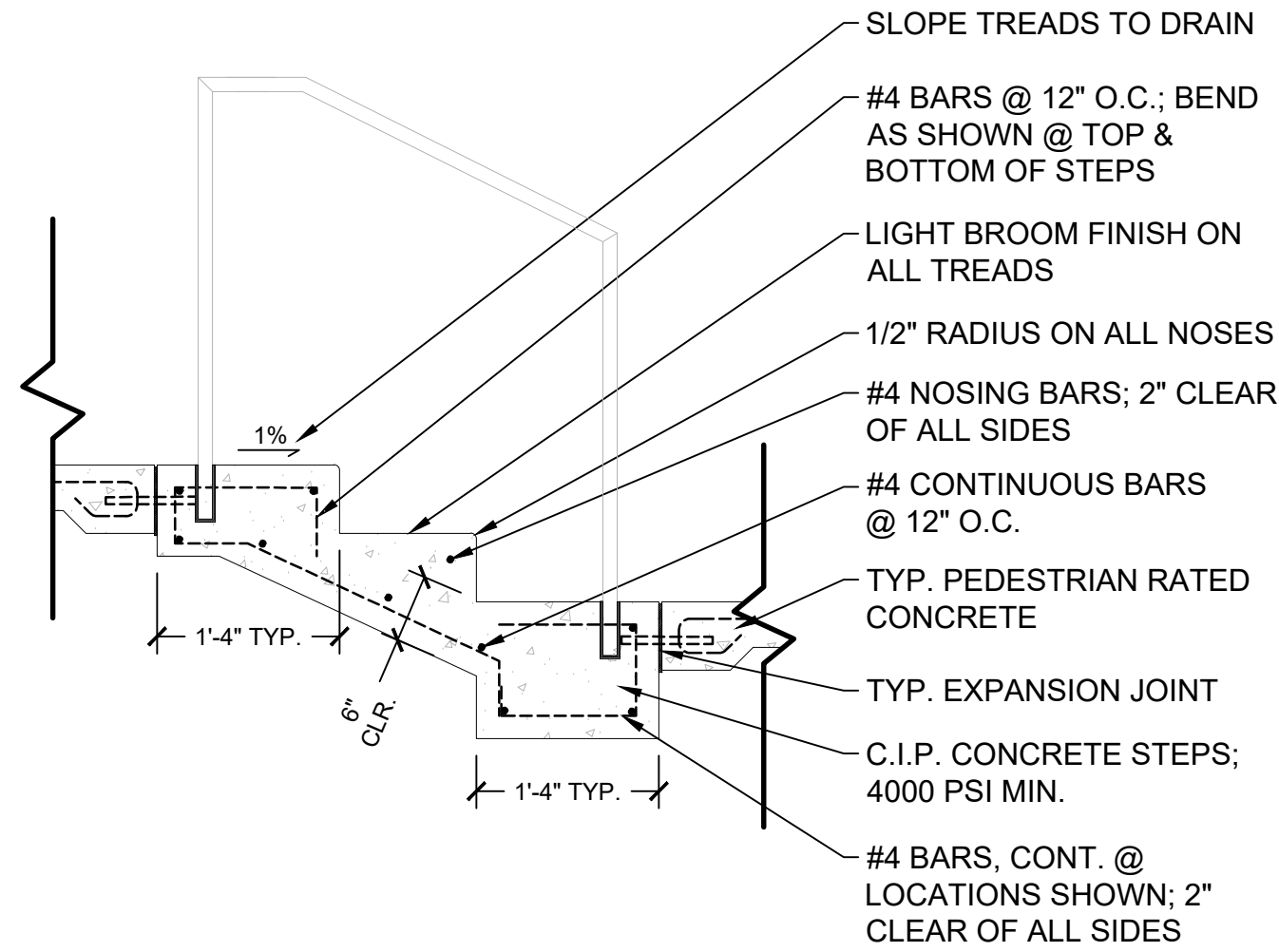
- PROVIDE SHOP DRAWINGS FOR APPROVAL BY CLIENT AND DESIGN TEAM
- ALL STEEL TO BE POWERED COATED



4 MONUMENT SIGN

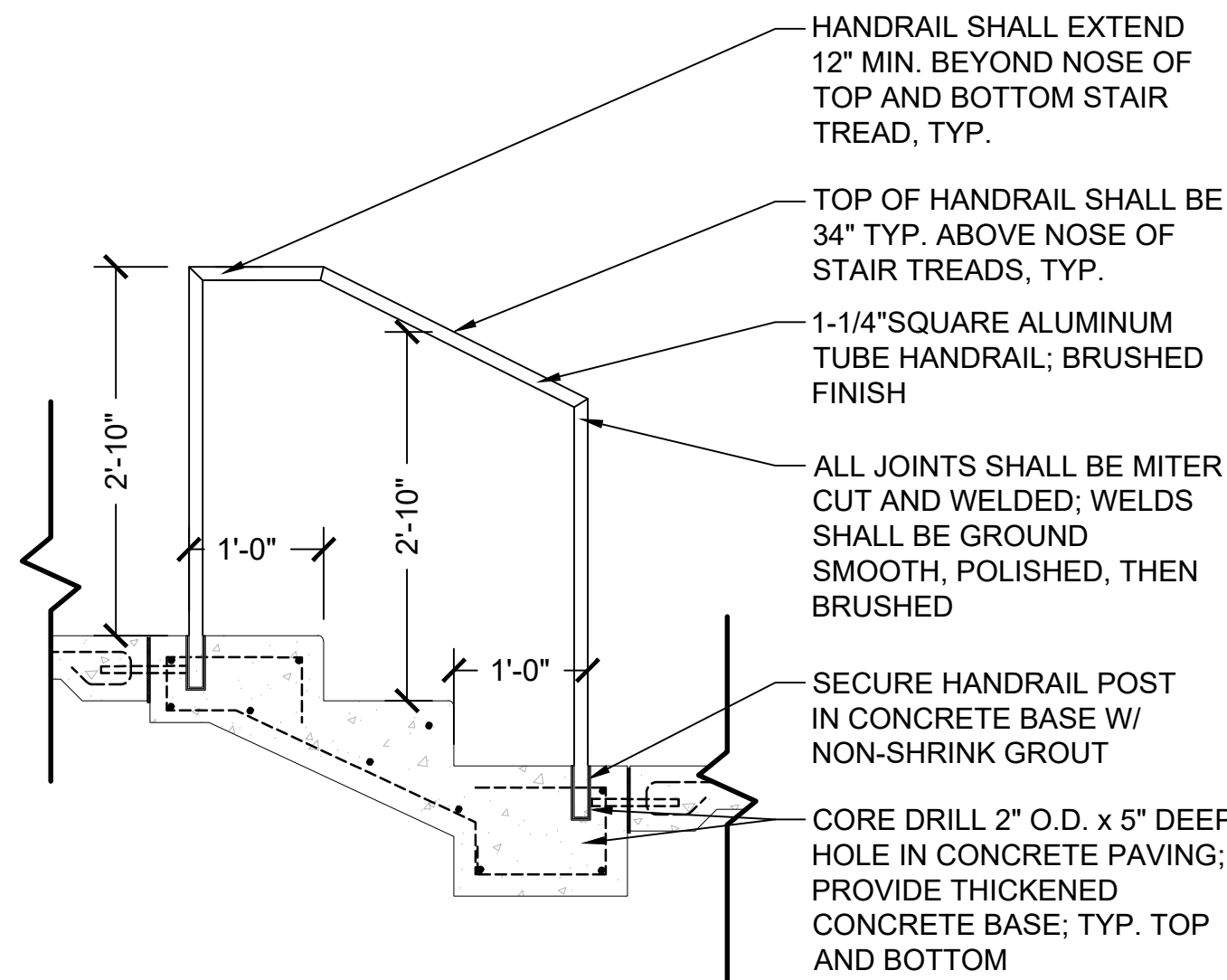
SCALE: 3/4" = 1'-0"

NOTE: REFERENCE LAYOUT AND GRADING SHEETS FOR NUMBER OF RISERS, RISER HEIGHT, AND TREAD WIDTH



2 TYP. CONCRETE STEPS

SCALE: 3/4" = 1'-0"



3 TYP. STAIR HANDRAIL

SCALE: 3/4" = 1'-0"