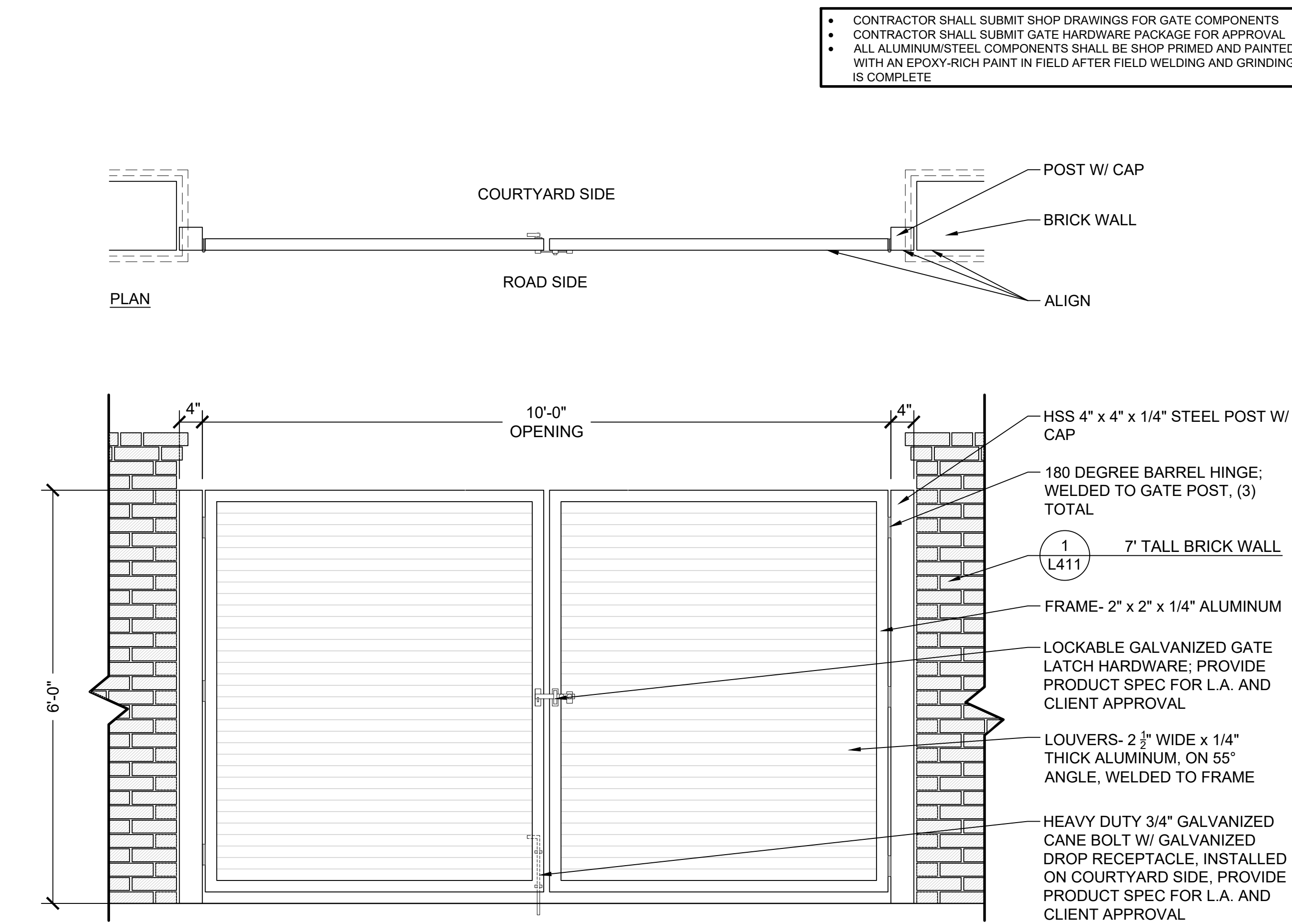
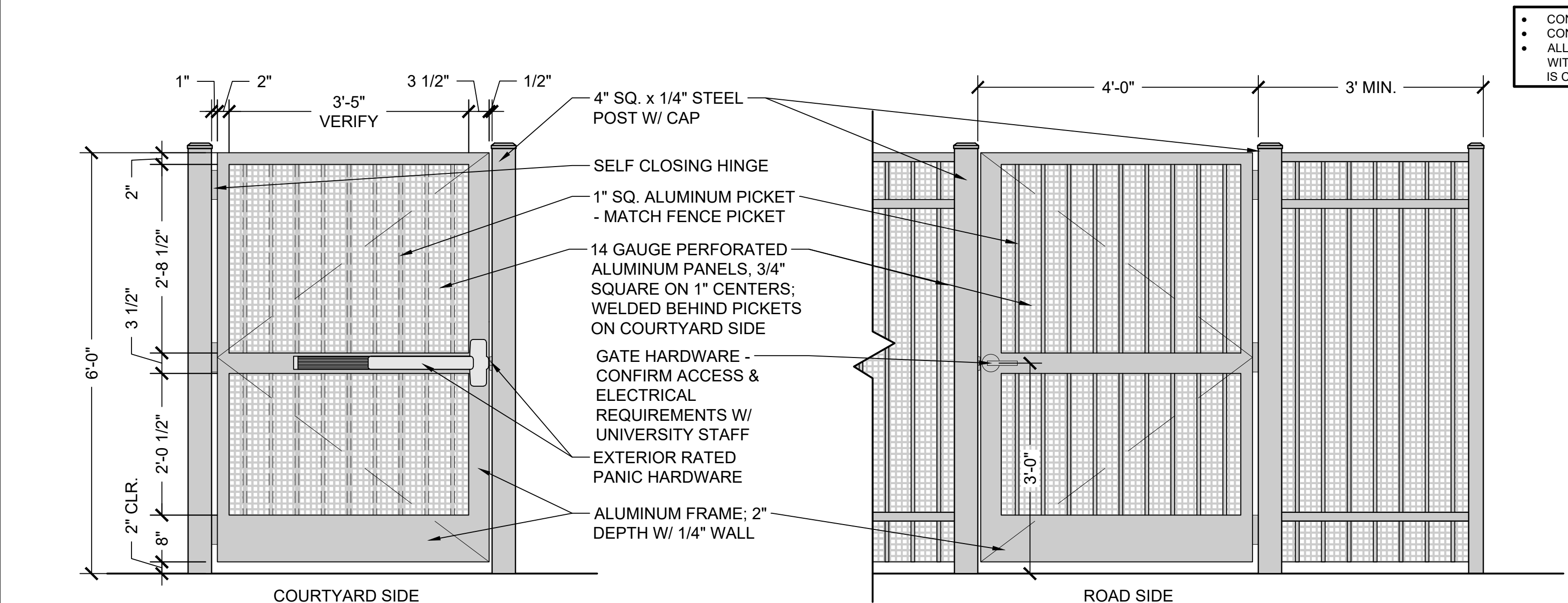


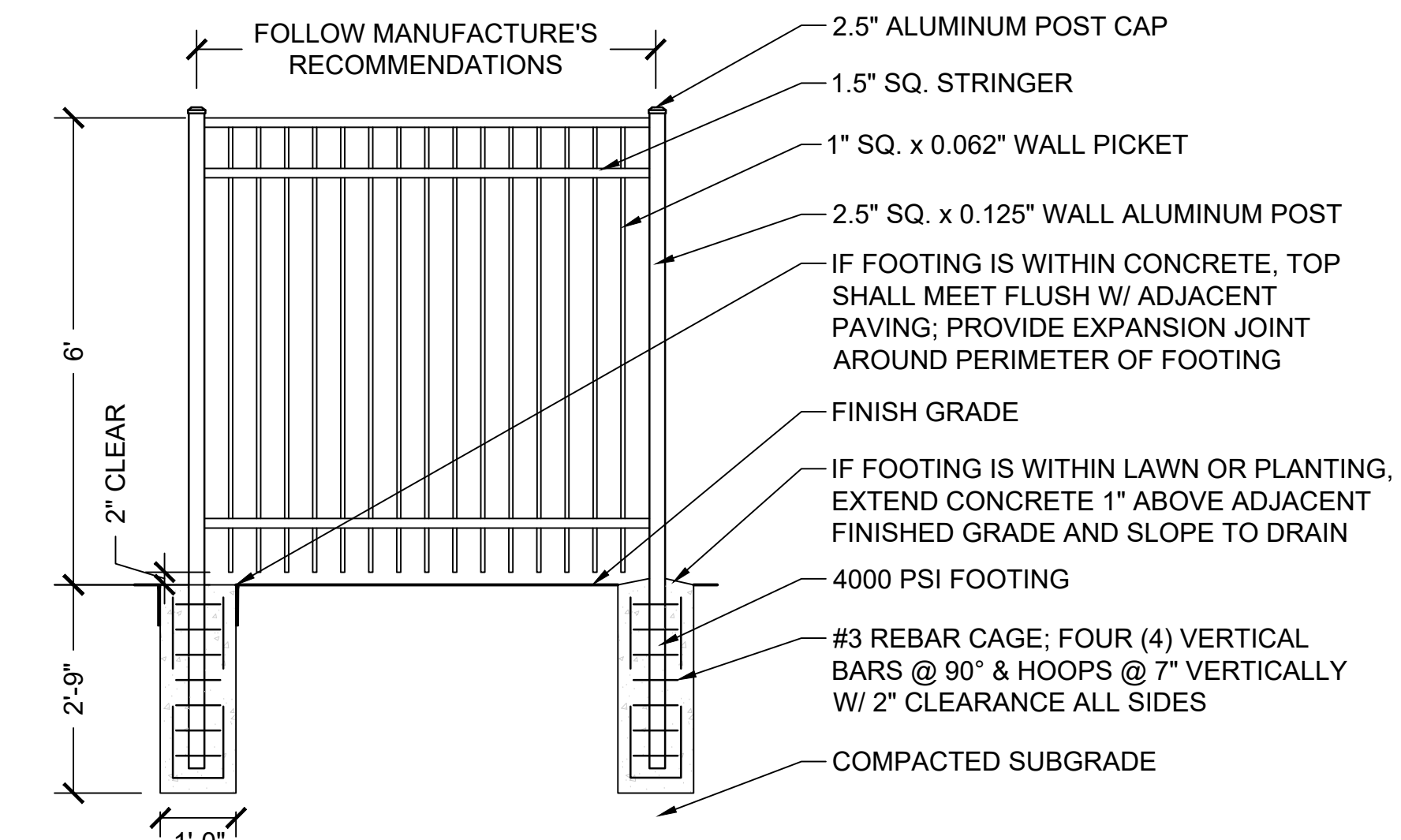
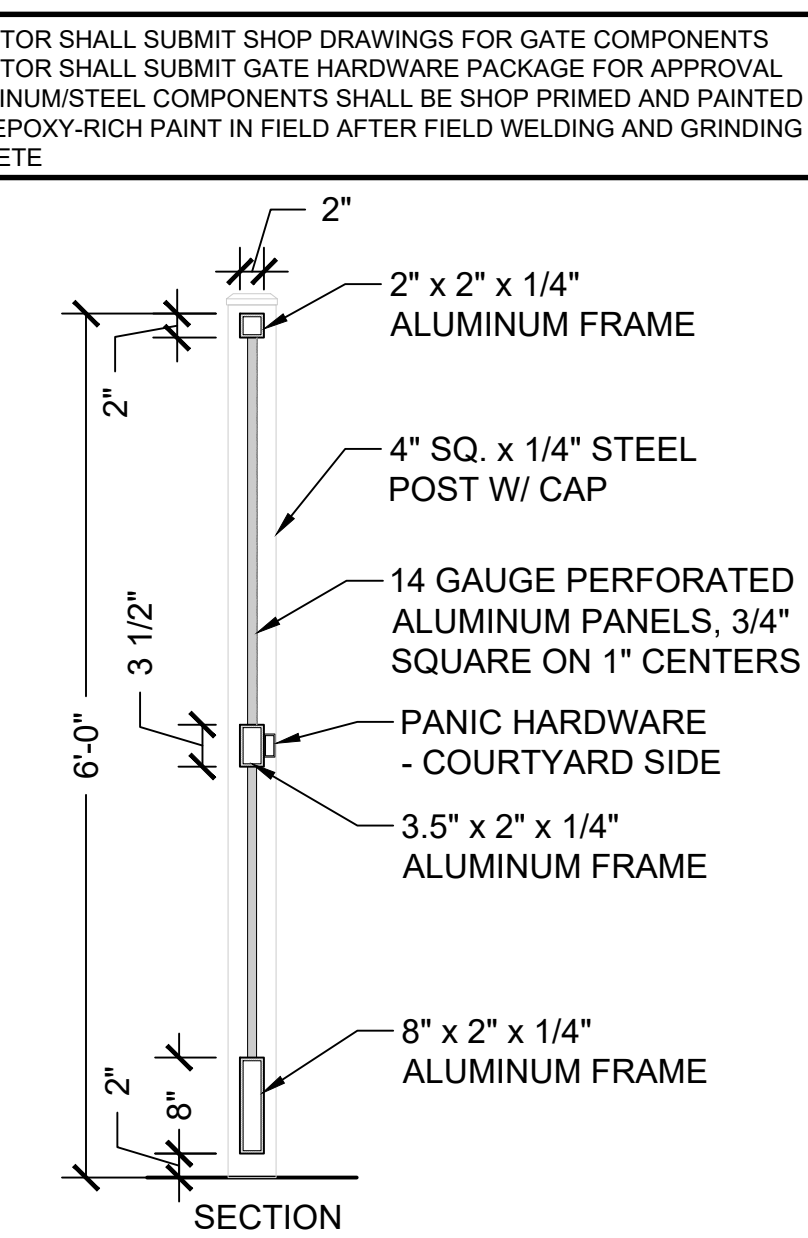
1 7' TALL BRICK WALL
SCALE: 1" = 1'-0"



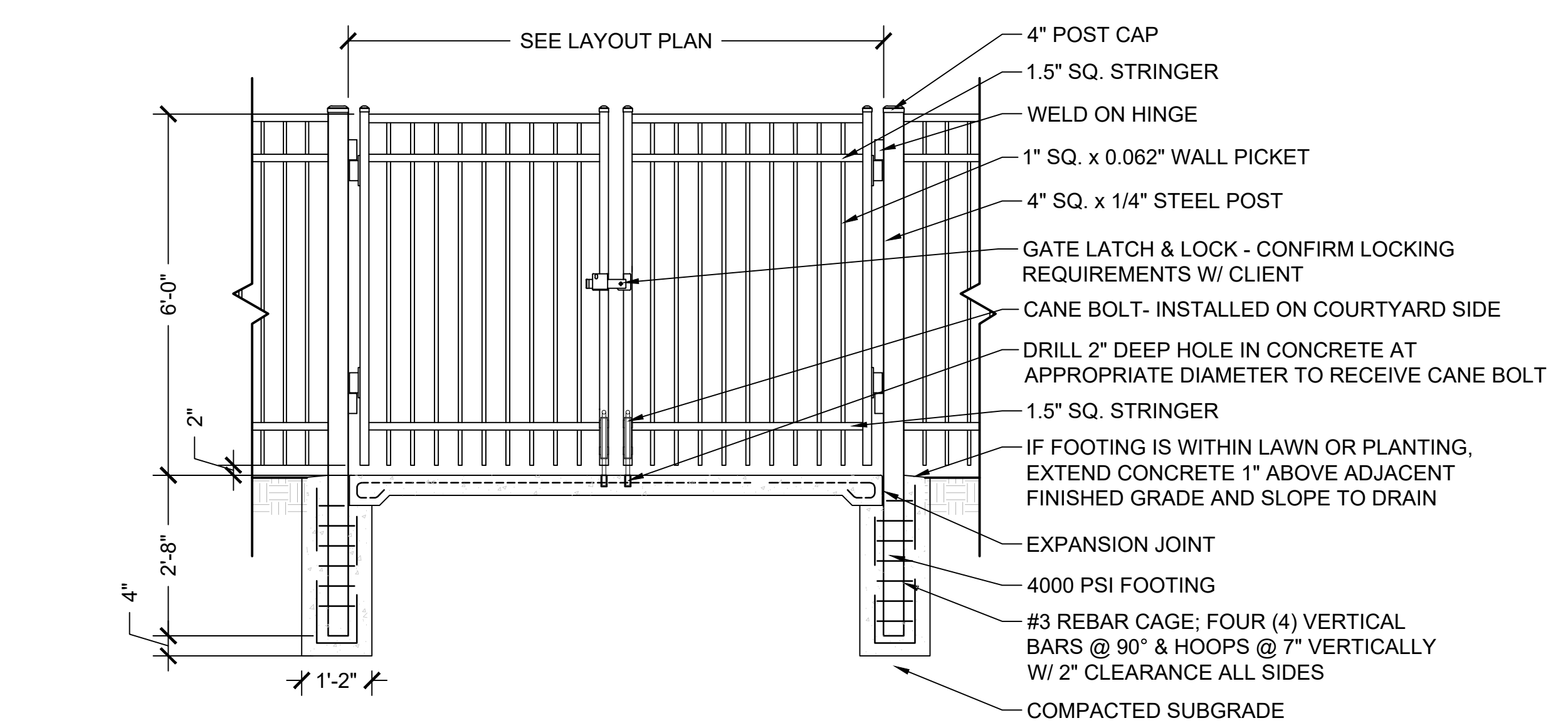
2 LOUVERED DOUBLE GATE
SCALE: 3/4" = 1'-0"



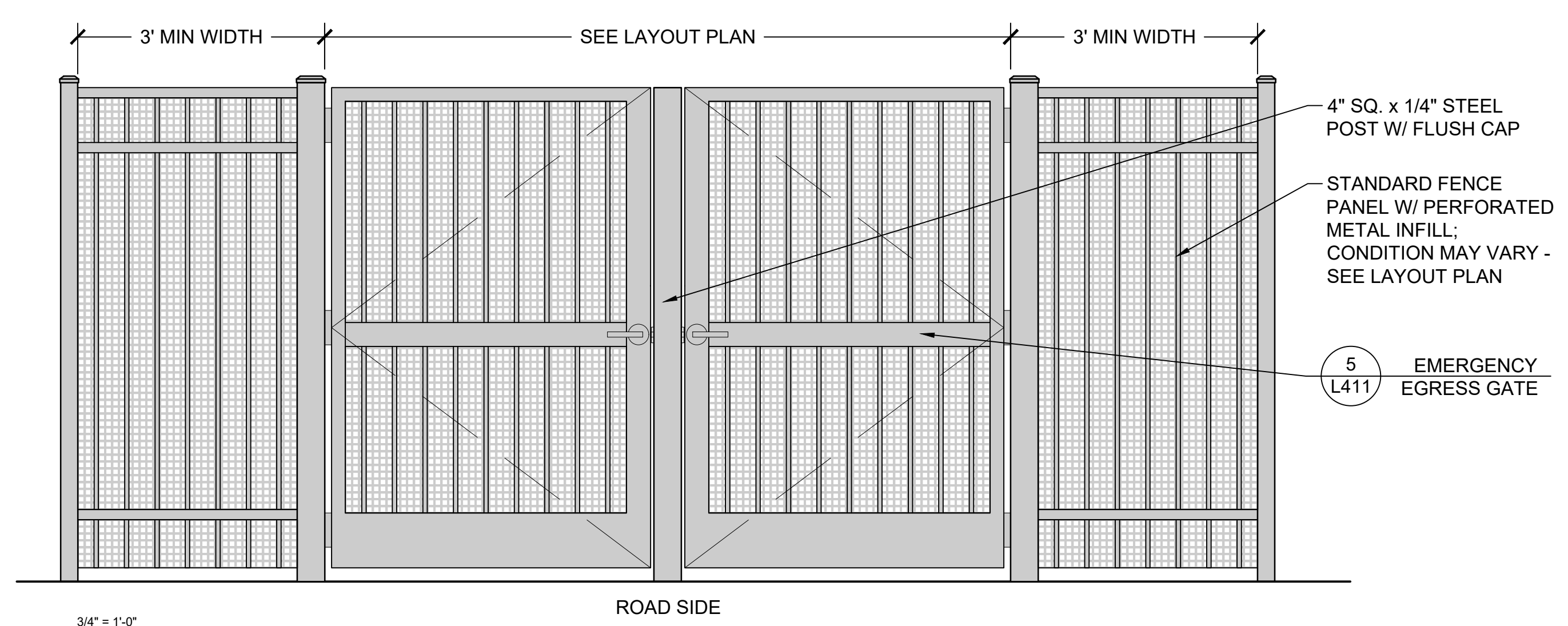
5 EMERGENCY EGRESS GATE
SCALE: 3/4" = 1'-0"



3 6' ALUMINUM PICKET FENCE
SCALE: 1/2" = 1'-0"



4 ALUMINUM PICKET DOUBLE GATE
SCALE: 1/2" = 1'-0"



6 DOUBLE EMERGENCY EGRESS GATES - ELEVATION
SCALE: 3/4" = 1'-0"

• CONTRACTOR SHALL SUBMIT SHOP DRAWINGS FOR GATE COMPONENTS
• CONTRACTOR SHALL SUBMIT GATE HARDWARE PACKAGE FOR APPROVAL
• ALL ALUMINUM/STEEL COMPONENTS SHALL BE SHOP PRIMED AND PAINTED WITH AN EPOXY-RICH PAINT IN FIELD AFTER FIELD WELDING AND GRINDING IS COMPLETE

• CONTRACTOR SHALL SUBMIT SHOP DRAWINGS FOR GATE COMPONENTS
• CONTRACTOR SHALL SUBMIT GATE HARDWARE PACKAGE FOR APPROVAL
• ALL ALUMINUM/STEEL COMPONENTS SHALL BE SHOP PRIMED AND PAINTED WITH AN EPOXY-RICH PAINT IN FIELD AFTER FIELD WELDING AND GRINDING IS COMPLETE