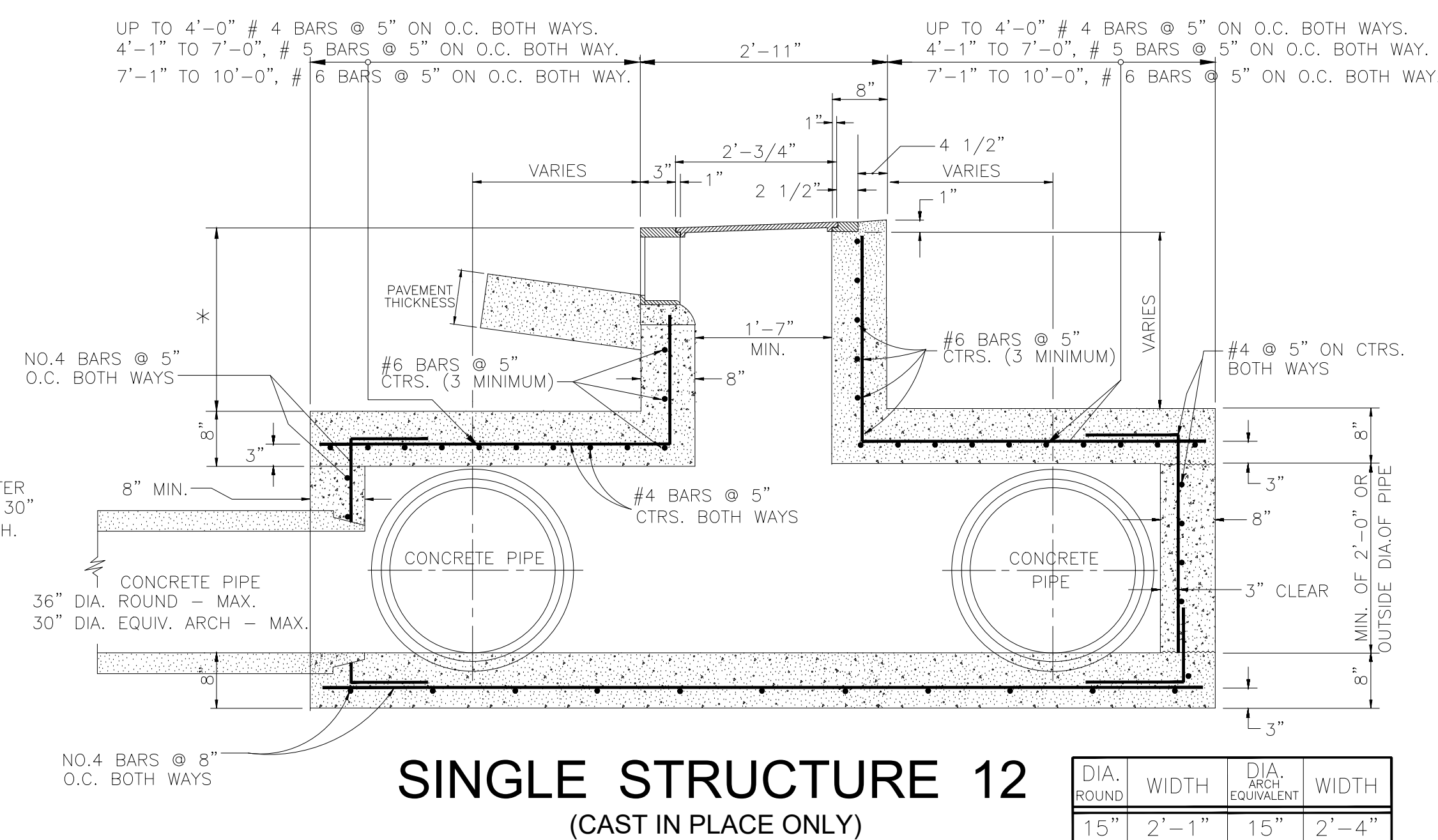
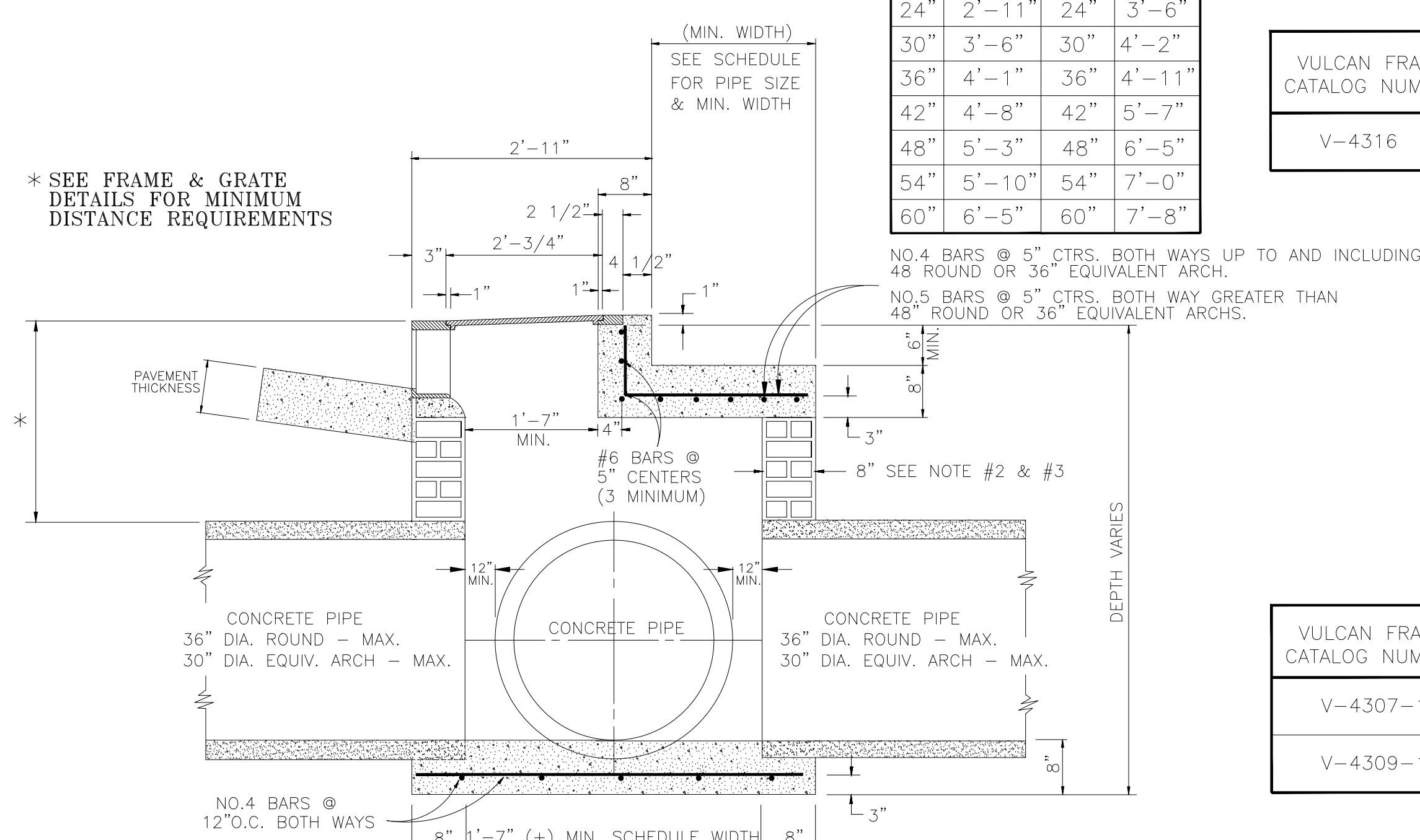


SINGLE STRUCTURE 13

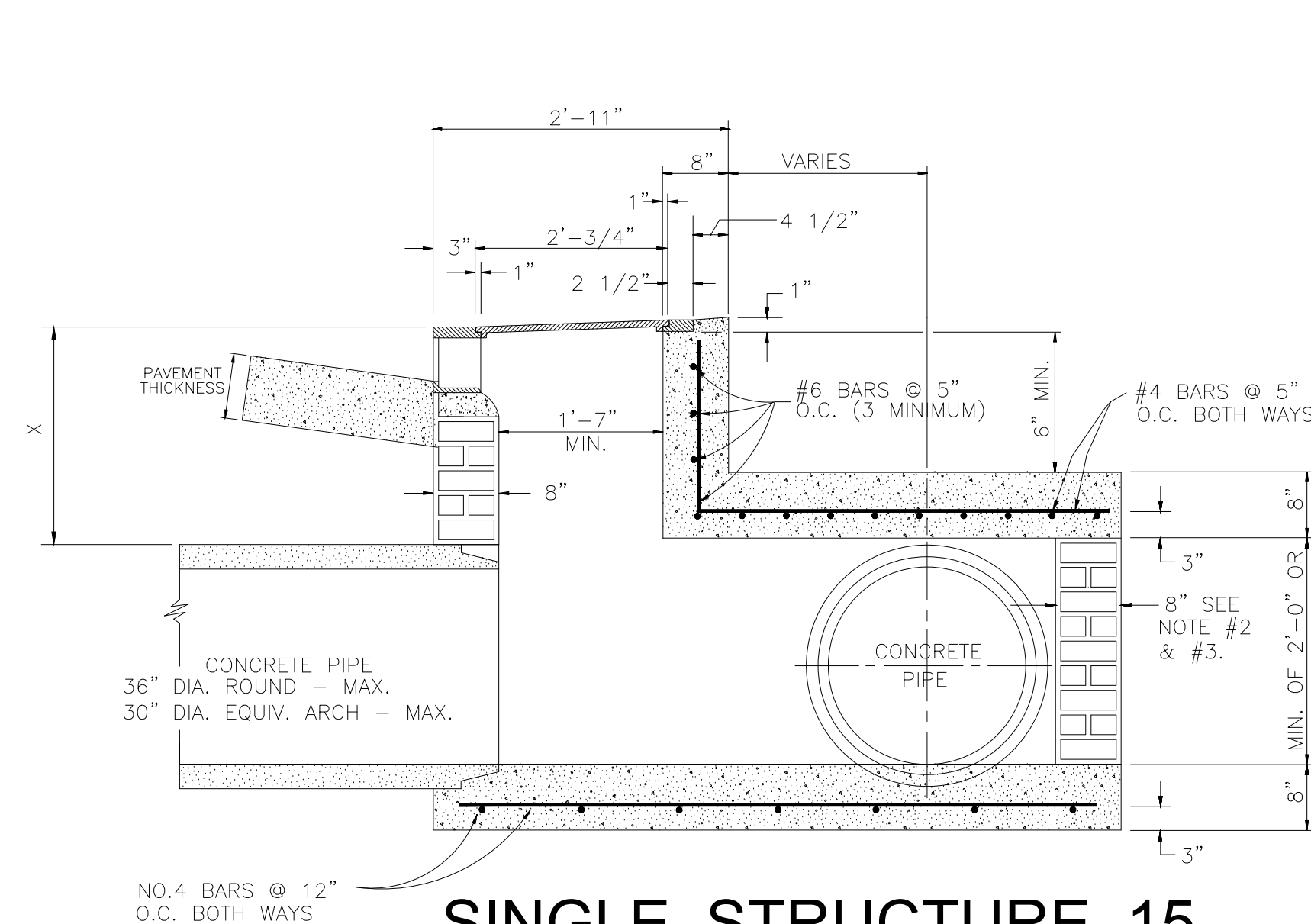


SINGLE STRUCTURE 12

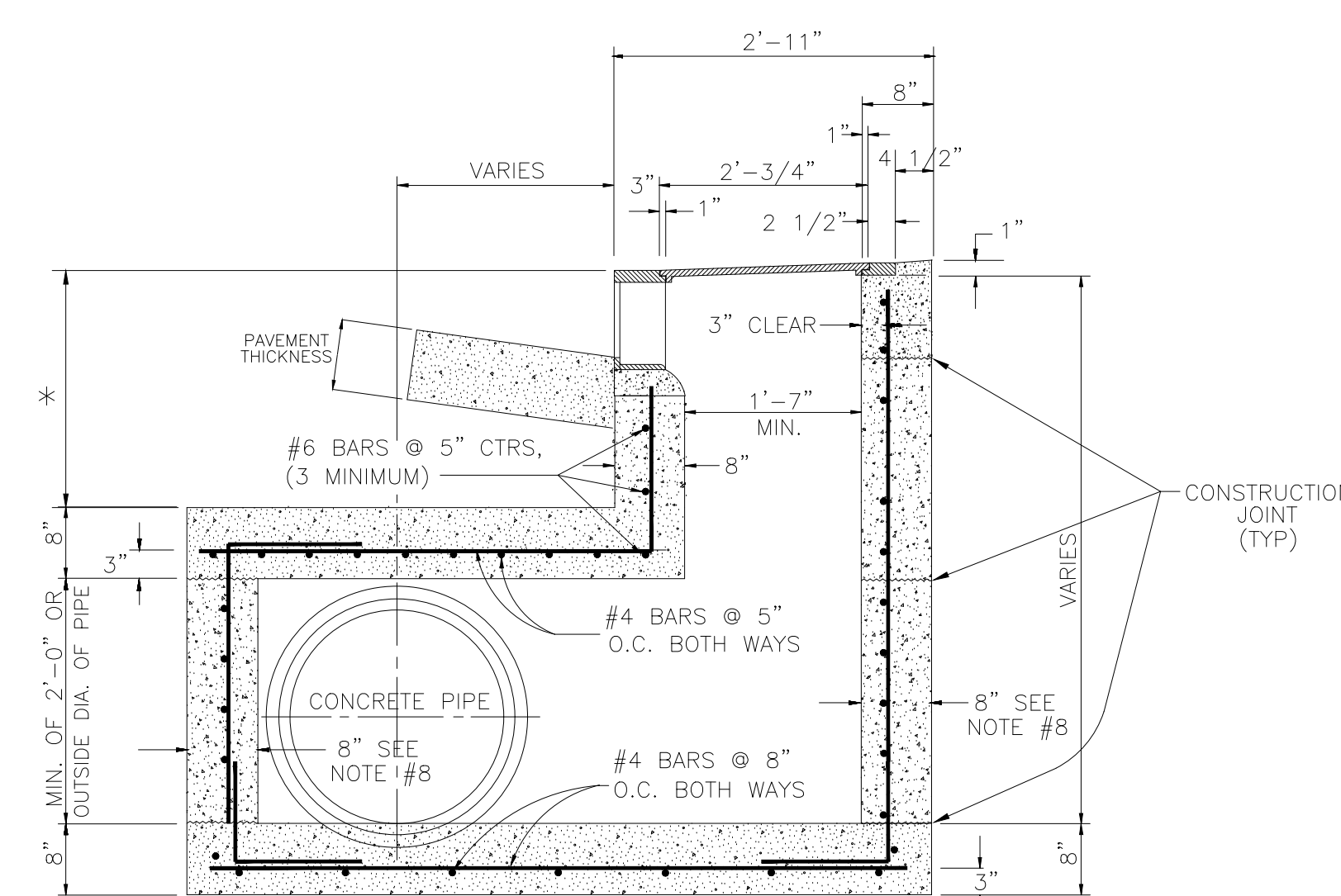
DIA. ROUND	WIDTH	DIA. ARCH. EQUILANT	WIDTH
15"	2'-1"	15"	2'-4"
18"	2'-4"	18"	2'-9"
24"	2'-11"	24"	3'-6"
30"	3'-6"	30"	4'-2"
36"	4'-1"	36"	4'-11"
42"	4'-8"	42"	5'-7"
48"	5'-3"	48"	6'-5"
54"	5'-10"	54"	7'-0"
60"	6'-5"	60"	7'-8"



SINGLE STRUCTURE 14



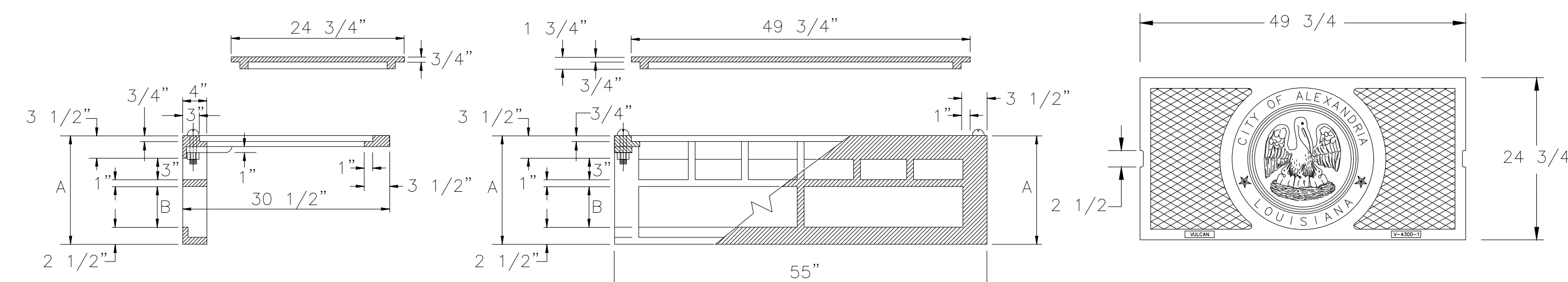
SINGLE STRUCTURE 15



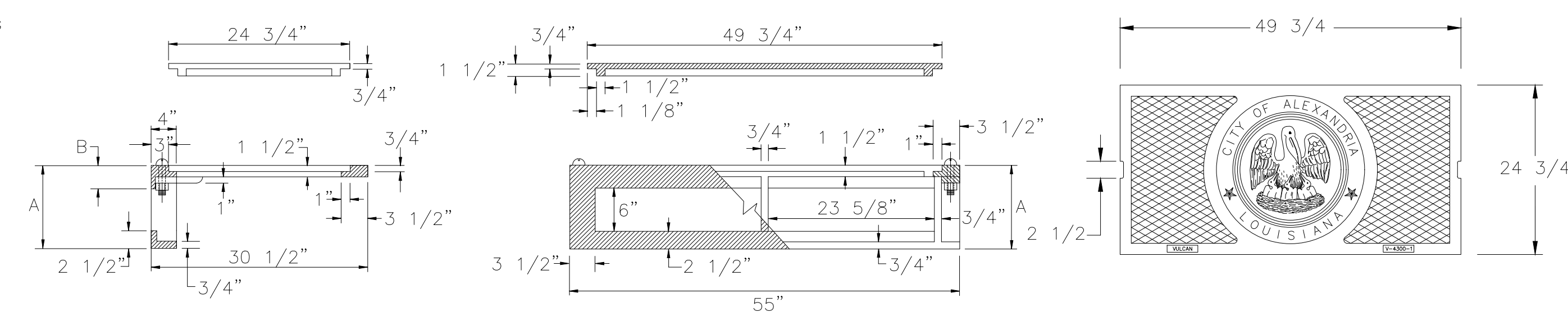
SINGLE STRUCTURE 16

NOTES

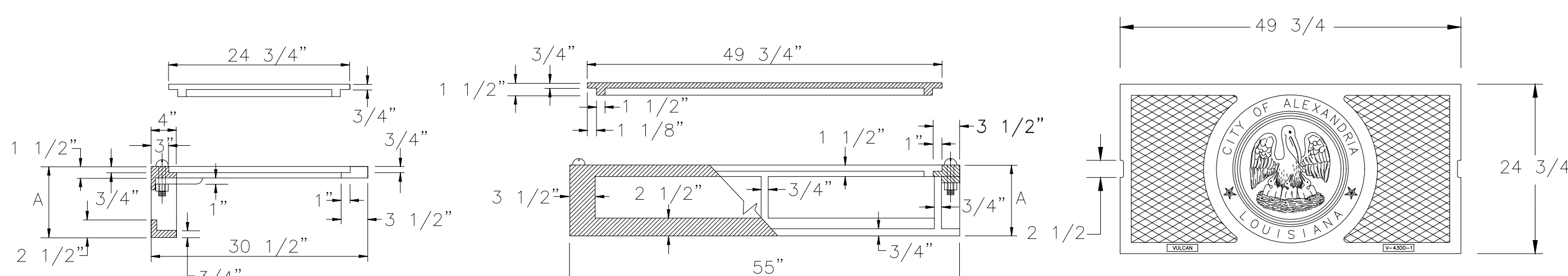
- | | |
|---|--|
| <p>1. The bottoms of all catch basins shall contain benches and they shall be constructed to allow smooth flow through the system. Grout shall extend to a height of 6" for 15" and 18" dia. pipe and a height of 1/3 dia. of pipe for 24" dia. pipe and larger at all outside edges and shall slope to the invert of the catch basin.</p> <p>2. In non-traffic areas and structures less than 5' in depth, walls may be of 4" x 8" x 16" solid sand & gravel brick or 8" concrete reinforced with 1/2" steel bars vertical on 8" ctrs. & 1/2" steel bars horizontal on 12" ctrs. vertical bars shall extend into the top and bottom of the catch basin to within 2" of the outside edge.</p> <p>3. All Structures over 5' in depth, shall have 8" concrete walls reinforced with 1/2" steel bars vertical on 8" ctrs. & 1/2" steel bars horizontal on 8" ctrs. Vertical bars shall extend into the top and bottom of the catch basin to within 2" of the outside edge.</p> | <p>4. All c.b.'s with masonry walls shall be grouted 1/2" thick on the inside and outside.</p> <p>5. The outside crown of all pipe entering or leaving a catch basin shall be below the elevation of the top of grates and/or gutter inverts.</p> <p>6. All rings and covers, frames and grates shall be delivered unpainted and after installation shall be coated with asphaltic varnish in accordance with sections 702.03 and 1008.07 of La.D.O.T.D. Standard Specifications for Roads and Bridges, 1982 edition.</p> <p>7. Grout for benches in catch basins shall be constructed of 5 sack or better, concrete mix.</p> <p>8. Top of frame to match projection of top of curb adjacent to catch basin.</p> |
|---|--|



VULCAN FRAME CATALOG NUMBER	CITY OF ALEX. DESIGNATION NO.	A	B	WEIGHTS			CURB HEIGHTS		MIN. DIST. FROM TOP OF CURB TO TOP OF PIPE UNDER PAVEMENT STRUCTURES 13, 14 & 15		MIN. DIST. FROM TOP OF CURB TO TOP OF PIPE UNDER PAVEMENT STRUCTURES 12 & 16	
				FRAME	FRONT GR	COVER	MIN.	MAX.	8" PAVEMENT	6" PAVEMENT	8" PAVEMENT	6" PAVEMENT
V-4316	RCB 7A-1	16"	6"	124	220	230	10"	12"	30"	28"	38"	36"



VULCAN FRAME CATALOG NUMBER	CITY OF ALEX. DESIGNATION NO.	A	B	WEIGHTS			CURB HEIGHTS	MIN. DIST. FROM TOP OF CURB TO TOP OF PIPE UNDER PAVEMENT STRUCTURES 13, 14 & 15		MIN. DIST. FROM TOP OF CURB TO TOP OF PIPE UNDER PAVEMENT STRUCTURES 12 & 16	
				FRAME	FRONT GR	COVER		8" PAVEMENT	6" PAVEMENT	8" PAVEMENT	6" PAVEMENT
V-4307-1	RCB 7A-2	13"	4 1/2"	124	194	230	8"	28"	26"	36"	34"
V-4309-1	RCB 7A-2A	11 1/2"	3"	124	175	230	6"	26"	24"	34"	32"



VULCAN FRAME CATALOG NUMBER	CITY OF ALEX. DESIGNATION NO.	A	WEIGHTS			CURB HEIGHTS	MIN. DIST. FROM TOP OF CURB TO TOP OF PIPE UNDER PAVEMENT STRUCTURES 13, 14 & 15		MIN. DIST. FROM TOP OF CURB TO TOP OF PIPE UNDER PAVEMENT STRUCTURES 12 & 16	
			FRAME	FRONT GR	COVER		8" PAVEMENT	6" PAVEMENT	8" PAVEMENT	6" PAVEMENT
V-4316-1	RCB 7A-3	10"	124	154	230	4"	22"	20"	30"	28"
V-4301-1	RCB 7A-4	8 1/2"	124	148	230	4"	20"	18"	28"	26"

STANDARD DETAILS FOR SINGLE RCB STRUCTURES 12 THRU 16

CITY OF ALEXANDRIA, LA.
ENGINEERING DEPARTMENT

DESIGNED: L.O.M.	DRAWN BY: D.J.	SCALE: AS SHOWN
CHECKED: L.O.M.	CHECKED: L.O.M.	DATE: FEB. - 2005
FILE: I:\Dwd\Standards\City Standards\62-02A		SHT. OF

62-02A

LEGEND:

- CHAIN LINK FENCE	— P —	PROPERTY LINE
- EXISTING GRADE	— C —	SEWER CLEAN OUT
- FINISH GRADE	— S —	SEWER LINE
- FIRE HYDRANT	— (S) —	SEWER MANHOLE
- GAS LINE	— W —	WATER LINE
- GAS SERVICE VALVE	— (H) —	WATER SERVICE METER
- POWERPOLE	— (W) —	WATER VALVE BOX
	— (B) —	WOOD FENCE

CITY OF ALEXANDRIA - CONTACT NUMBERS		
1.	ELECTRIC DEPT. -	473-1344
2.	ENGINEERING DEPT.-	473-1171
3.	FIRE DEPT. -	441-6600
4.	GAS DEPT. -	441-6018
5.	TRAFFIC DEPT -	441-6127
6.	WASTEWATER DEPT.-	441-6240
7.	WATER DEPT. -	441-6214

NOTICE
48 HOURS BEFORE DIGGING
CALL 1-800-272-3020
TO LOCATE UTILITY LINES

12-19-05	CHANGED DIMENSIONS ON CORNER REBARS	L.O.M.
DATE	DESCRIPTION	BY
	REVISIONS	