

GENERAL UTILITY NOTES:

1. CONTRACTOR IS RESPONSIBLE FOR VERIFYING ALL UTILITIES AND NOTIFYING THE APPROPRIATE UTILITY COMPANY PRIOR TO BEGINNING CONSTRUCTION.
2. THE CONTRACTOR IS CAUTIONED THAT THE LOCATION AND/OR ELEVATION OF EXISTING UTILITIES AS SHOWN ON THESE PLANS IS BASED ON RECORDS OF THE VARIOUS UTILITY COMPANIES AND, WHERE POSSIBLE MEASUREMENTS TAKEN IN THE FIELD. THE INFORMATION IS NOT TO BE RELIED ON AS BEING EXACT OR COMPLETE. THE CONTRACTOR MUST CALL THE APPROPRIATE UTILITY COMPANY AT LEAST 48 HOURS BEFORE ANY EXCAVATION TO REQUEST EXACT FIELD LOCATION OF THE UTILITIES. IT SHALL BE THE RESPONSIBILITY OF THE CONTRACTOR TO RELOCATE ALL EXISTING UTILITIES WHICH CONFLICT WITH THE PROPOSED IMPROVEMENTS SHOWN ON THE PLANS.
3. THE CONTRACTOR SHALL COORDINATE WITH ALL UTILITIES TO ASSURE PROPER DEPTH AND PREVENT ANY CONFLICT OF UTILITIES. THE CONTRACTOR SHALL VERIFY LOCATION OF ALL PIPES, AND UTILITIES PRIOR TO CONSTRUCTION.
4. THE CONTRACTOR IS RESPONSIBLE FOR ALL REPAIRS OF DAMAGE TO ANY EXISTING IMPROVEMENTS DURING CONSTRUCTION, SUCH AS, BUT NOT LIMITED TO, UTILITIES, PAVEMENT, STRIPING, CURBS, ETC. REPAIRS SHALL BE EQUAL TO OR BETTER THAN EXISTING CONDITIONS.
5. THE CONTRACTOR SHALL REFER TO BUILDING PLANS AND SPECIFICATIONS FOR ACTUAL LOCATION OF ALL UTILITY ENTRANCES, TO INCLUDE SANITARY SEWER LATERALS, DOMESTIC WATER SERVICE, ELECTRICAL, TELEPHONE, AND CABLE T.V. SERVICE. THE CONTRACTOR SHALL COORDINATE INSTALLATION OF UTILITIES IN SUCH A MANNER AS TO AVOID CONFLICTS AND ASSURE PROPER DEPTHS ARE ACHIEVED, AS WELL AS COORDINATING WITH CITY UTILITY REQUIREMENTS AS TO LOCATIONS AND SCHEDULING OF TIE-INS/CONNECTIONS PRIOR TO CONNECTING TO EXISTING FACILITIES.
6. THE CONTRACTOR SHALL COORDINATE WITH PLANS, POWER COMPANY, AND TELEPHONE COMPANY FOR ACTUAL ROUTING OF POWER AND TELEPHONE SERVICE TO THE BUILDING.
7. THE CONTRACTOR SHALL COMPLY TO THE FULLEST EXTENT WITH THE LATEST STANDARD OF OSHA DIRECTIVES OR ANY OTHER AGENCY HAVING JURISDICTION FOR EXCAVATION AND TRENCHING PROCEDURES. THE CONTRACTOR SHALL USE SUPPORT SYSTEMS, SLOPING, BENCHING, AND OTHER MEANS OF PROTECTION. THIS TO INCLUDE, BUT NOT LIMITED TO, INGRESS AND EGRESS FROM ALL EXCAVATION AND TRENCHING. CONTRACTOR IS RESPONSIBLE TO COMPLY WITH PERFORMANCE CRITERIA FOR OSHA.
8. THE CONTRACTOR SHALL, ON ALL UTILITIES, COORDINATE INSPECTION WITH THE APPROPRIATE AUTHORITIES PRIOR TO COVERING TRENCHES DURING INSTALLATION.
9. CONSTRUCTION SHALL COMPLY WITH ALL GOVERNING CODES AND REQUIREMENTS, AND THE CONTRACTOR SHALL CONDUCT ALL REQUIRED TESTS TO THE SATISFACTION OF THE RESPECTIVE UTILITY COMPANIES AND OWNER'S INSPECTING AUTHORITIES.
10. ALL NECESSARY INSPECTIONS AND/OR CERTIFICATIONS REQUIRED BY CODES AND/OR UTILITY SERVICE COMPANIES SHALL BE PERFORMED PRIOR TO ANNOUNCED BUILDING POSSESSION AND THE FINAL CONNECTION OF SERVICES.

GAS:

1. THE CONTRACTOR SHALL PAY ALL FEES AND CHARGES PERTINENT TO THE GAS CONSTRUCTION, AND SHALL COORDINATE WITH THE CITY OF ALEXANDRIA GAS SUPERINTENDENT PRIOR TO COMMENCING WITH WORK.
2. REFERENCE BUILDING PLANS FOR ALL BUILDING COMMUNICATION SERVICE CONNECTION LOCATIONS.

SEWER:

1. THE CONTRACTOR SHALL PAY ALL FEES AND CHARGES PERTINENT TO SANITARY SEWER CONSTRUCTION, AND SHALL COORDINATE WITH THE CITY OF ALEXANDRIA SEWER SUPERINTENDENT PRIOR TO COMMENCING WITH CONSTRUCTION.
2. THE MINIMUM HORIZONTAL SEPARATION BETWEEN ANY WATER AND SEWER LINE SHALL BE SIX (6') FEET, AND THE MINIMUM VERTICAL SEPARATION SHALL BE EIGHTEEN (18") INCHES.
3. REFERENCE BUILDING PLANS FOR ALL BUILDING SEWER SERVICE CONNECTION LOCATIONS.

POWER:

1. THE CONTRACTOR IS RESPONSIBLE FOR COORDINATING WITH THE CITY OF ALEXANDRIA ELECTRICAL SUPERINTENDENT FOR ALL GUY RELOCATIONS, LOCATIONS OF TRANSFORMERS, AND REQUIREMENTS FOR CONDUIT TRENCHING.
2. REFERENCE BUILDING PLANS FOR ALL BUILDING ELECTRICAL SERVICE CONNECTION LOCATIONS.

TELEPHONE:

1. THE CONTRACTOR SHALL COORDINATE WITH TELEPHONE PROVIDER FOR CONNECTION TO EXISTING PHONE SERVICE.
2. REFERENCE BUILDING PLANS FOR ALL BUILDING COMMUNICATION SERVICE CONNECTION LOCATIONS.

WATER:

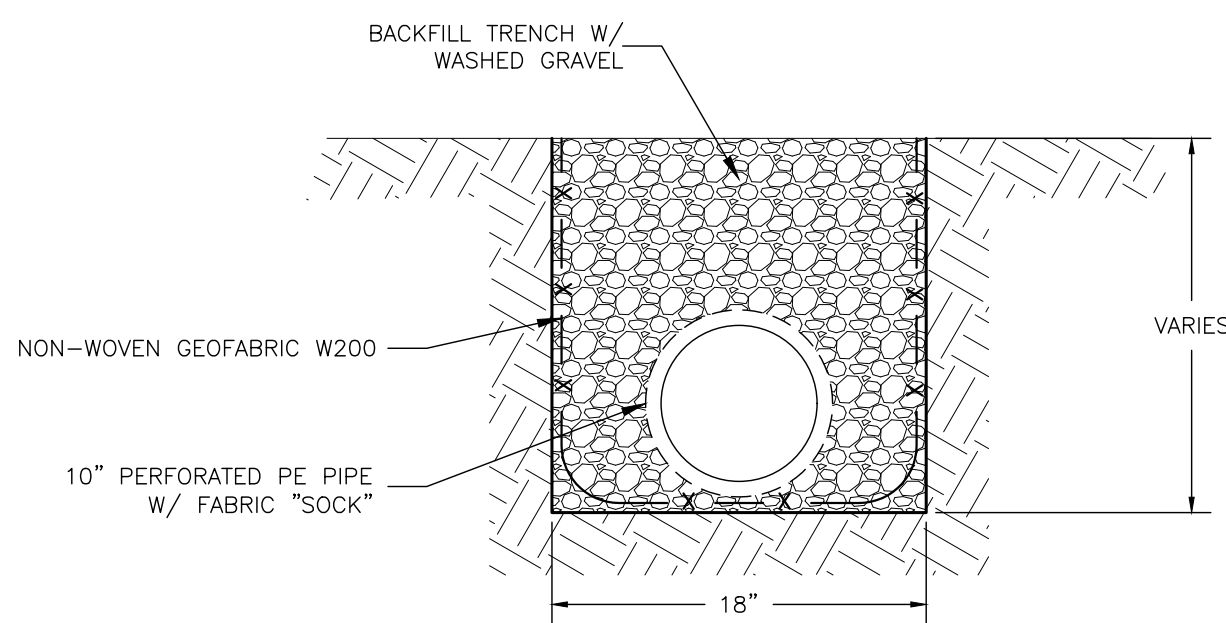
1. THE CONTRACTOR SHALL PAY ALL FEES AND CHARGES PERTINENT TO WATER CONSTRUCTION. THE CITY OF ALEXANDRIA WILL INCLUDING A SERVICE TAP ALONG WITH THE NEW METER AND METER BOX. PLUMBING CONTRACTOR SHALL BE RESPONSIBLE FOR INSTALLATION SERVICE LINE FROM CITY'S METER TO BUILDING.
2. CONTRACTOR SHALL CONTACT THE CITY OF ALEXANDRIA WATER DEPARTMENT FOR SERVICE TAP PRIOR TO THE INSTALLATION OF PAVEMENT OR BASE.
3. ALL WATER LINES SHALL BE INSTALLED AT A MINIMUM HORIZONTAL CLEARANCE OF 6' AND VERTICAL CLEARANCE OF 18" FROM ANY SANITARY SEWER LINE.
4. THE MINIMUM COVER ON ALL WATER LINES SHALL BE 3 FEET.
5. WATER FROM NEW SYSTEMS, OR FROM NEW PARTS OF EXISTING SYSTEMS, SHALL NOT BE FURNISHED FOR CONSUMER'S USE UNTIL TESTS PERFORMED BY A LABORATORY WHICH IS CERTIFIED BY THE STATE HEALTH OFFICER HAVE SHOWN THE WATER SUPPLIED BY THE SYSTEM TO BE FREE FROM COLIFORM BACTERIA.
6. REFERENCE BUILDING PLANS FOR ALL BUILDING WATER SERVICE CONNECTION LOCATIONS.

LANDSCAPING:

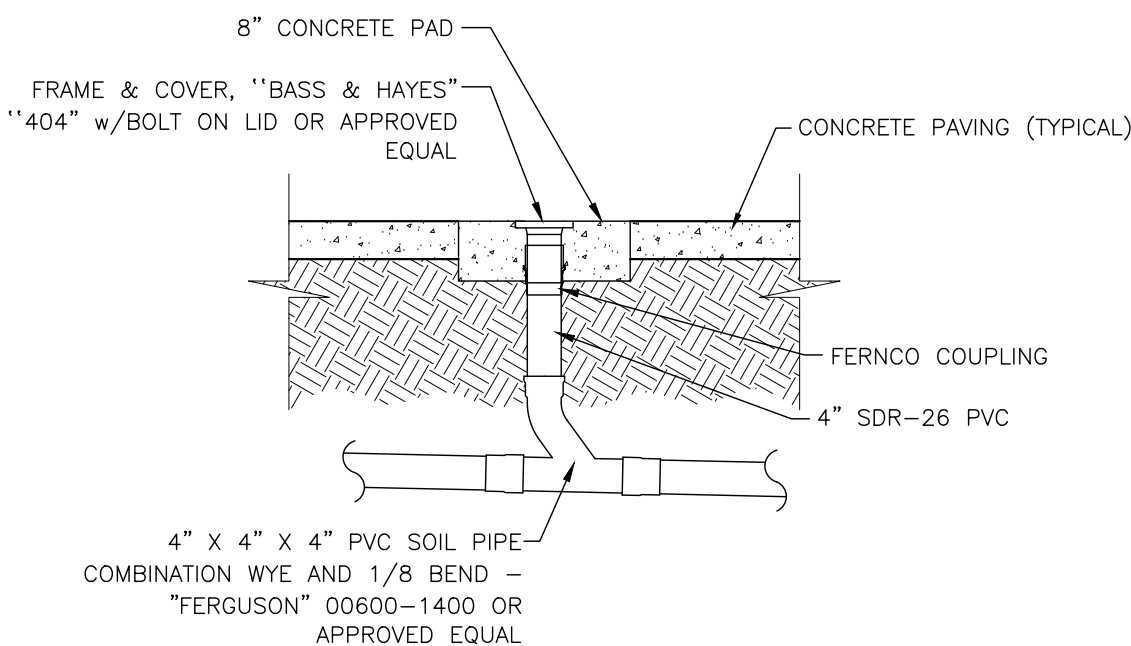
1. ALL DISTURBED & UNPAVED AREAS SHALL BE SODDED AND WATERED, AND SHALL CONTAIN GRASS OR OTHER STANDARD VEGETATIVE COVER IN ACCORDANCE WITH ALL APPLICABLE ORDINANCES.
2. SEE LANDSCAPING PLANS FOR NOTES AND DETAILS.

EARTHWORK NOTES:

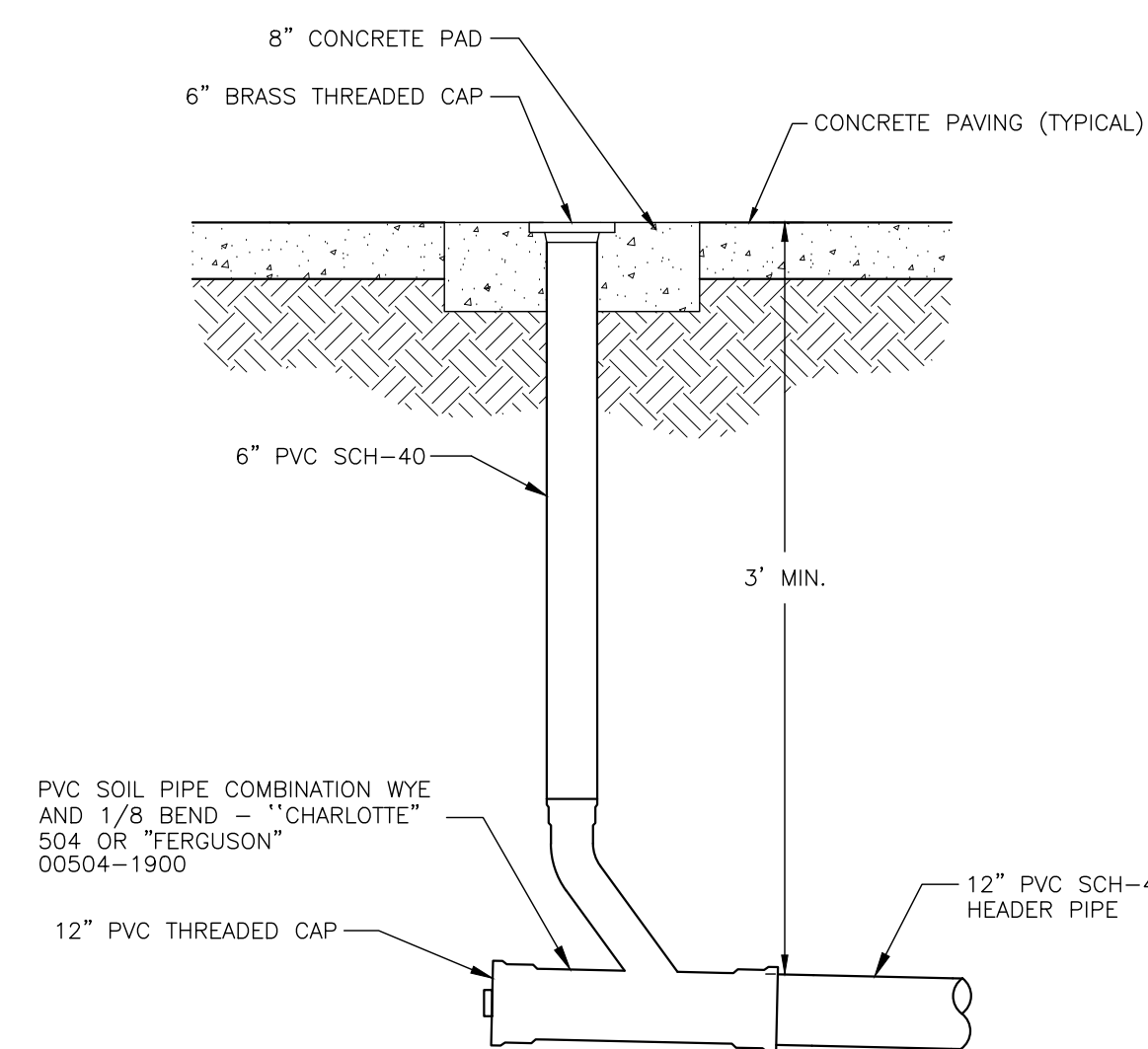
1. AFTER THE SUBGRADE HAS BEEN PREPARED AND INSPECTED, FILL PLACEMENT MAY BEGIN. SELECT FILL MATERIAL SHOULD BE FREE OF ORGANIC OR OTHER DELETERIOUS MATERIALS, HOMOGENEOUS MIXTURE, HAVE A MAXIMUM PARTICLE SIZE OF THREE (3) INCHES, HAVE A LIQUID LIMIT LESS THAN 40 AND PLASTICITY INDEX BETWEEN 8 AND 20, AND CONSIST OF SILTY-CLAYEY SANDS (SM-SC), LOW PLASTICITY SANDY CLAYS (CL), OR CLAYEY SANDS (SC) AS DEFINED BY THE UNIFIED SOIL CLASSIFICATION SYSTEM. MOST OF THE ON-SITE SURFICIAL SOILS APPEAR TO MEET THE REQUIREMENT FOR USE AS SELECT FILL ON THIS PROJECT. IF A FINE-GRAINED MATERIAL IS USED FOR FILL, VERY CLOSE MOISTURE CONTENT CONTROL WILL BE REQUIRED TO ACHIEVE THE RECOMMENDED DEGREE OF COMPACTION.
2. FILL SHOULD BE PLACED IN MAXIMUM LIFTS OF EIGHT (8) INCHES OF LOOSE MATERIALS AND SHOULD BE COMPACTED WITHIN THE RANGE OF ONE (1) PERCENTAGE POINT BELOW TO THREE (3) PERCENTAGE POINTS ABOVE THE OPTIMUM MOISTURE CONTENT VALUE AND A MINIMUM OF 95% OF THE MAXIMUM DENSITY AS DETERMINED BY THE STANDARD PROCTOR (ASTM D-698) TEST. IF WATER MUST BE ADDED, IT SHOULD BE UNIFORMLY APPLIED AND THOROUGHLY MIXED INTO THE SOIL BY DISKING OR SCARIFYING.
3. EACH LIFT OF COMPACTED SOIL SHOULD BE TESTED AND INSPECTED BY THE SOILS ENGINEER OR HIS REPRESENTATIVE PRIOR TO PLACEMENT OF SUBSEQUENT LIFTS. AS A GUIDELINE, IT IS RECOMMENDED THAT FIELD DENSITY TESTS BE TAKEN AT A FREQUENCY OF NOT LESS THAN ONE (1) TEST PER 2,500 SQUARE FEET OF SURFACE AREA PER LIFT OR A MINIMUM OF FOUR PER LIFT FOR EACH TESTED AREA FOR THE BUILDING AREA AND NOT LESS THAN ONE (1) TEST PER 5,000 SQUARE FEET OF SURFACE AREA PER LIFT OR A MINIMUM OF FOUR PER LIFT FOR EACH TESTED AREA FOR THE PAVEMENT AREA.



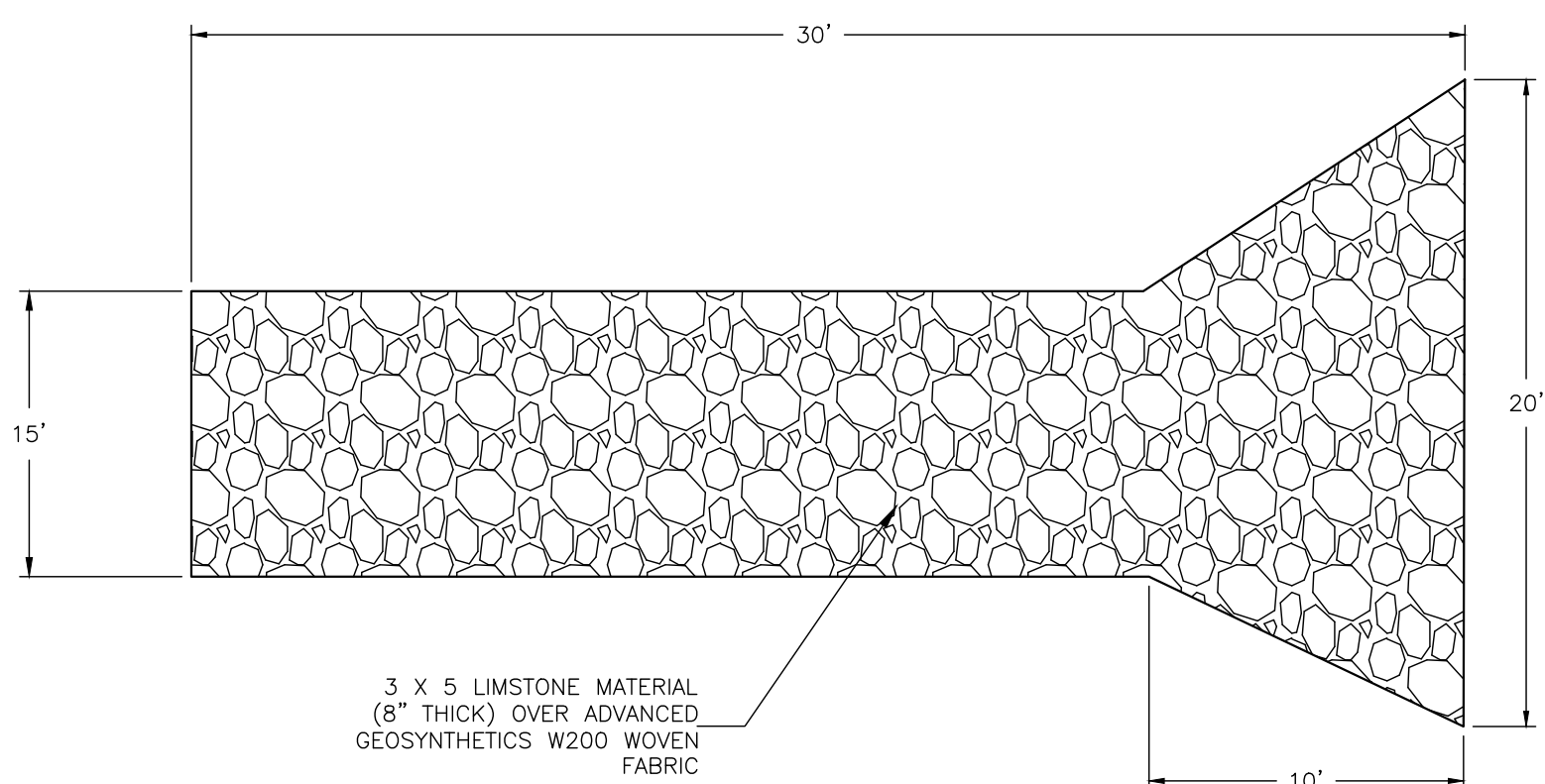
FRENCH DRAIN DETAIL
NOT TO SCALE



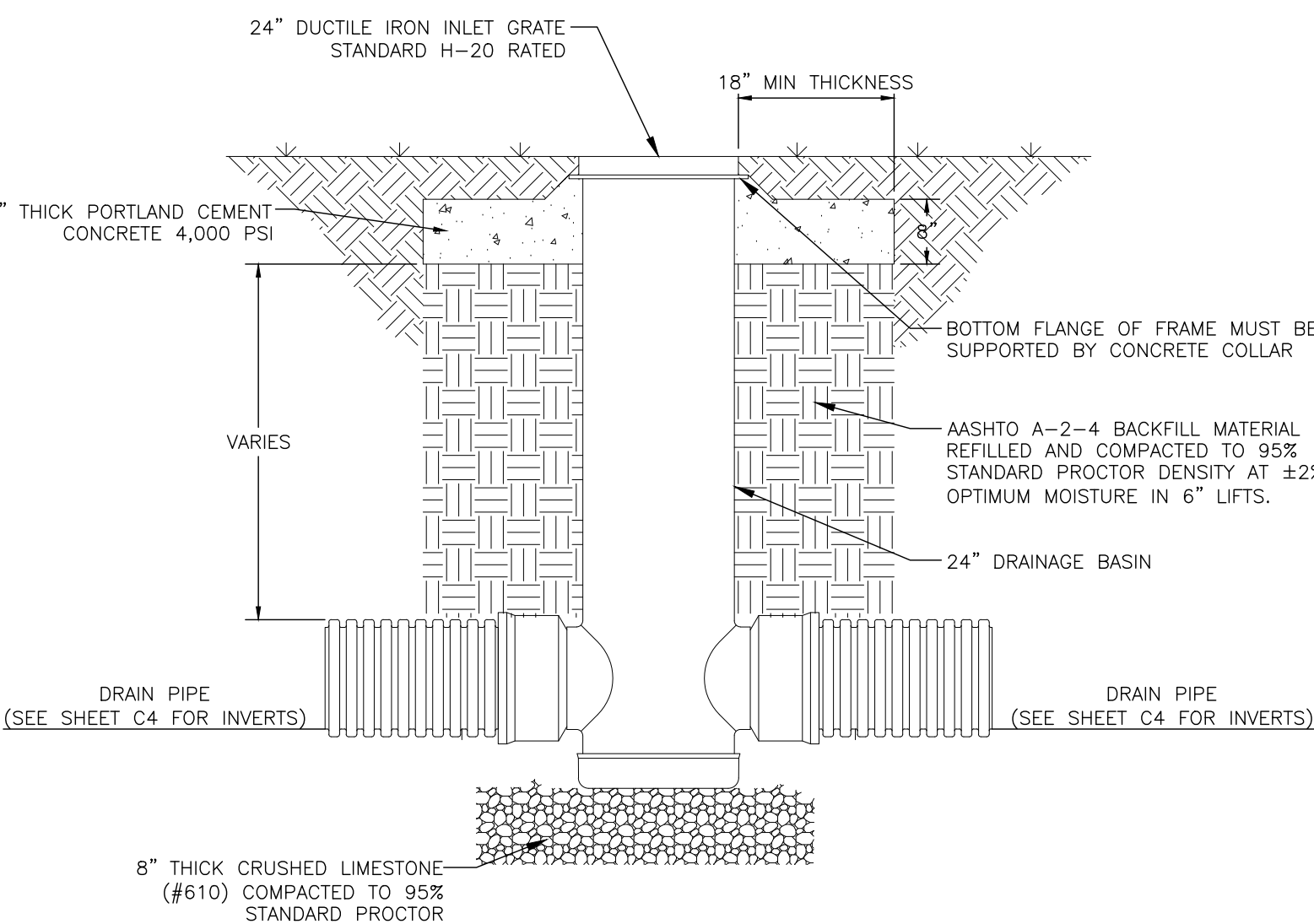
SEWER CLEANOUT DETAIL
NOT TO SCALE



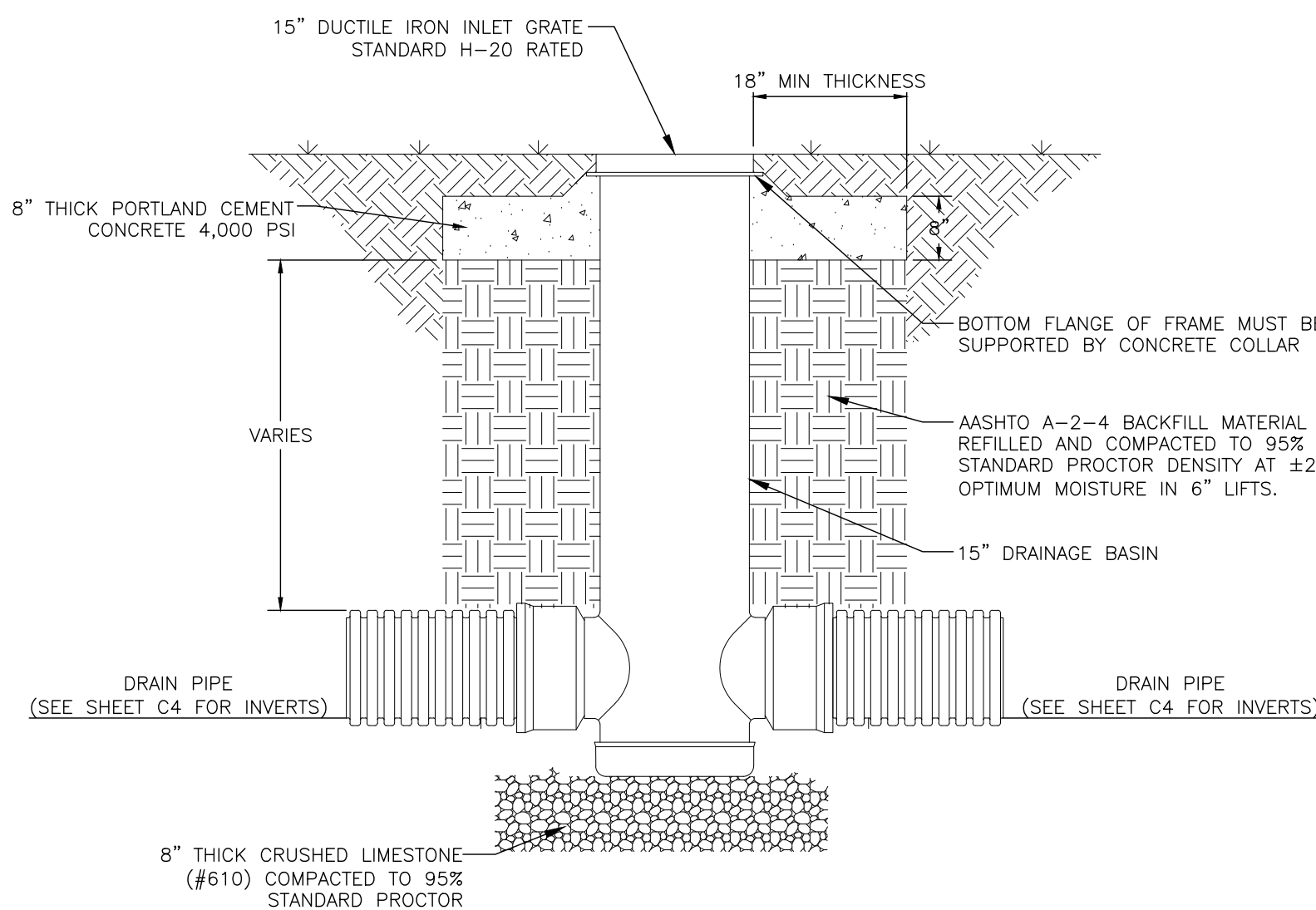
DRAINAGE SERVICE LINE
CLEANOUT DETAIL
NOT TO SCALE



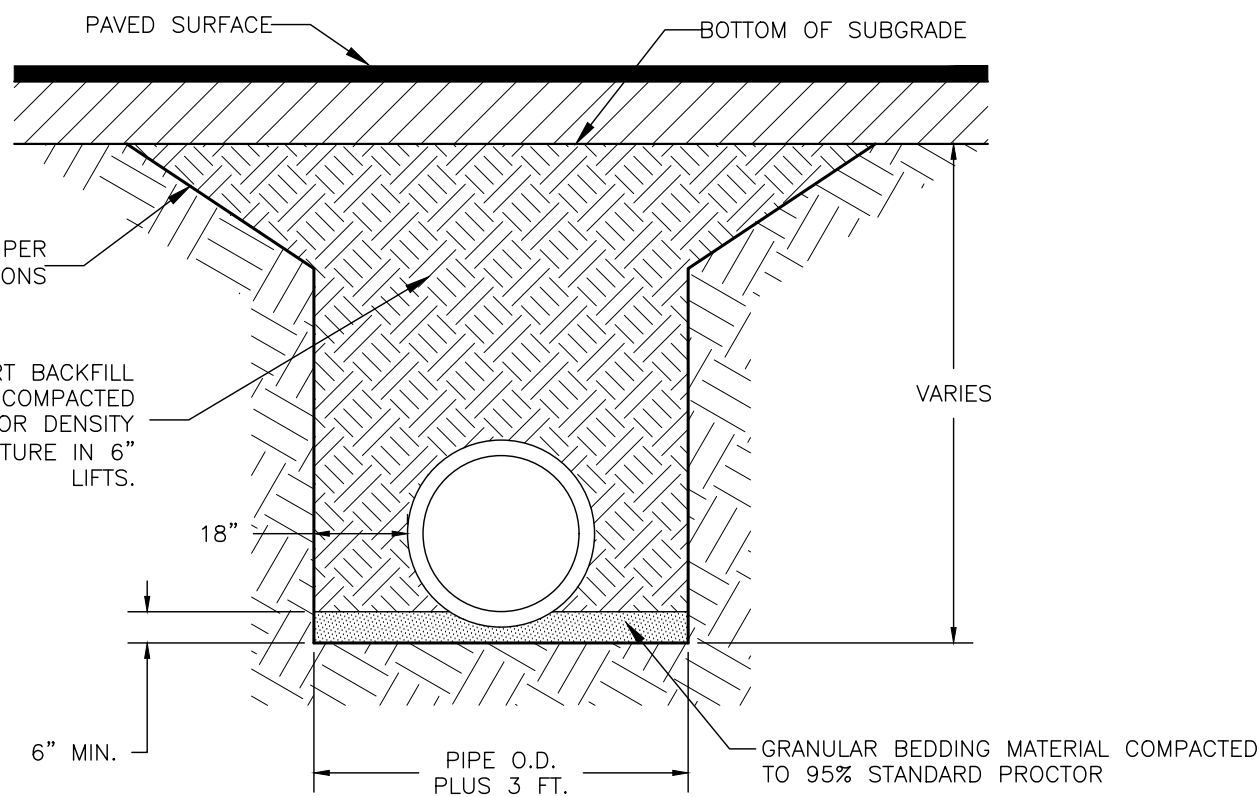
TEMPORARY STONE
CONSTRUCTION ENTRANCE
NOT TO SCALE



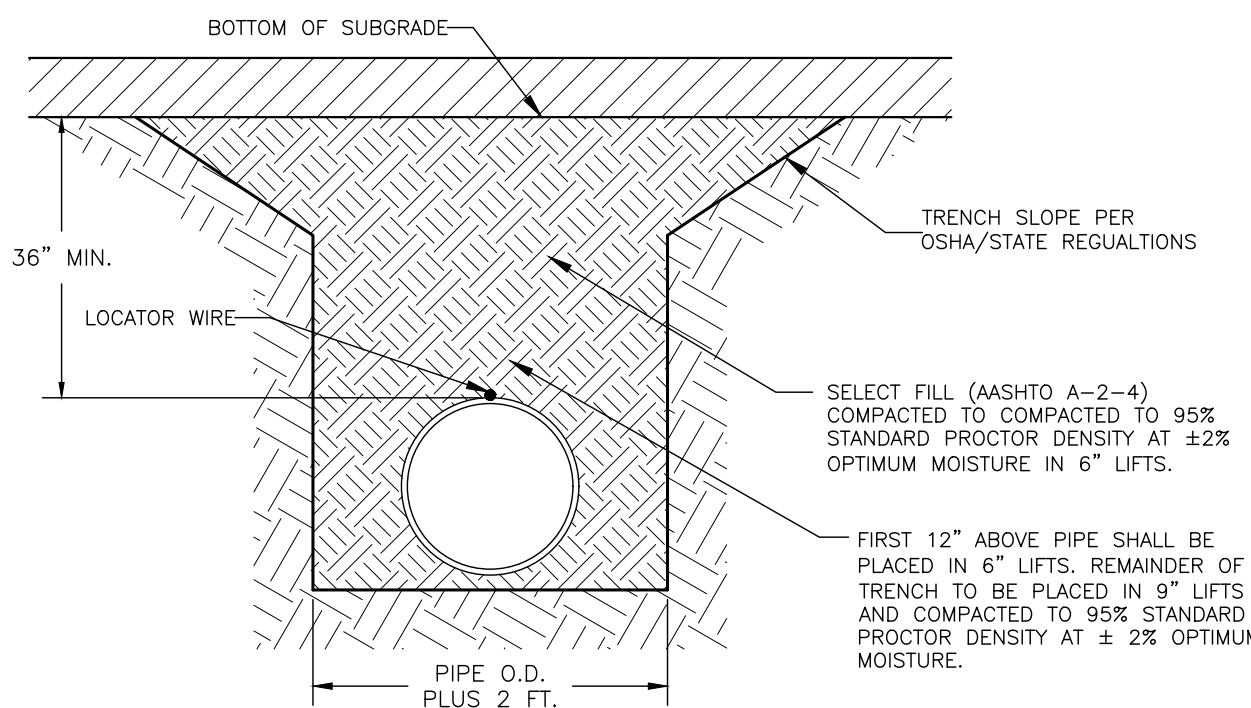
NYLOPLAST 18" CATCH BASIN DETAIL
DRAINAGE STRUCTURE 9
NOT TO SCALE



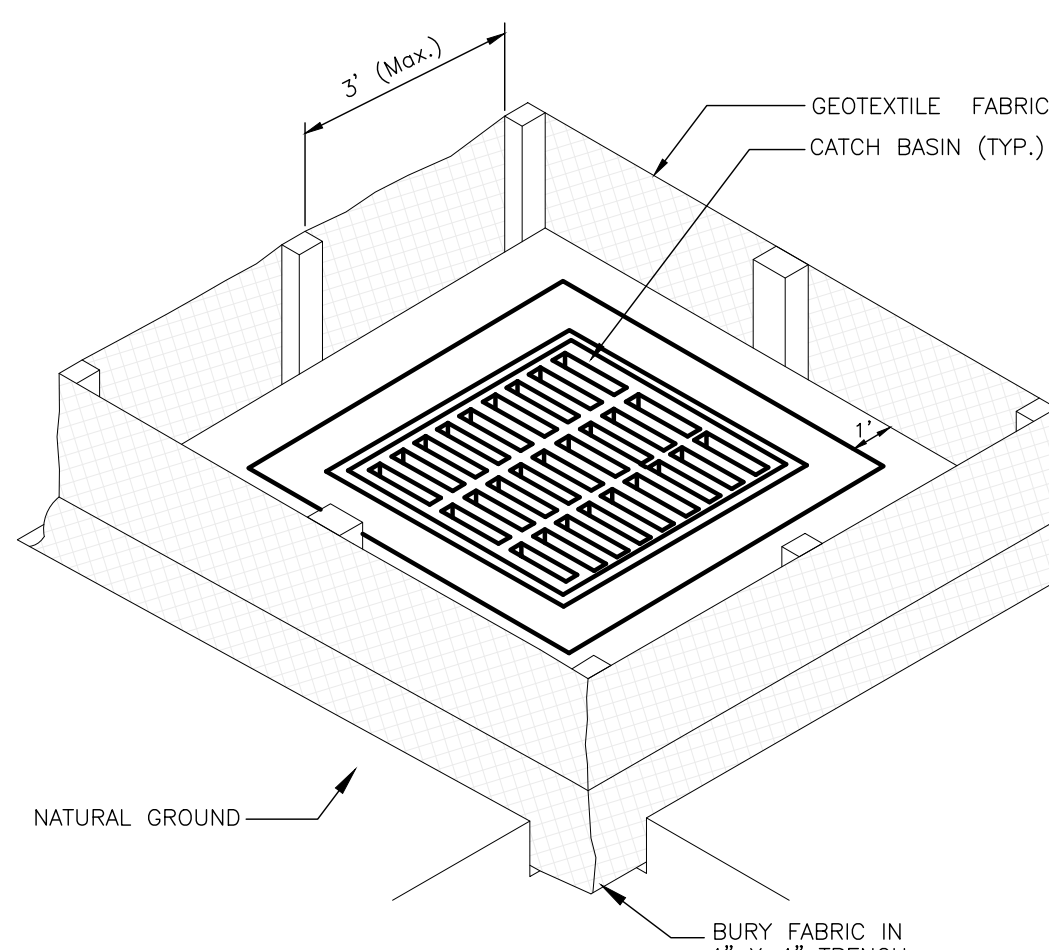
NYLOPLAST 15" CATCH BASIN DETAIL
DRAINAGE STRUCTURE 1 - 8
NOT TO SCALE



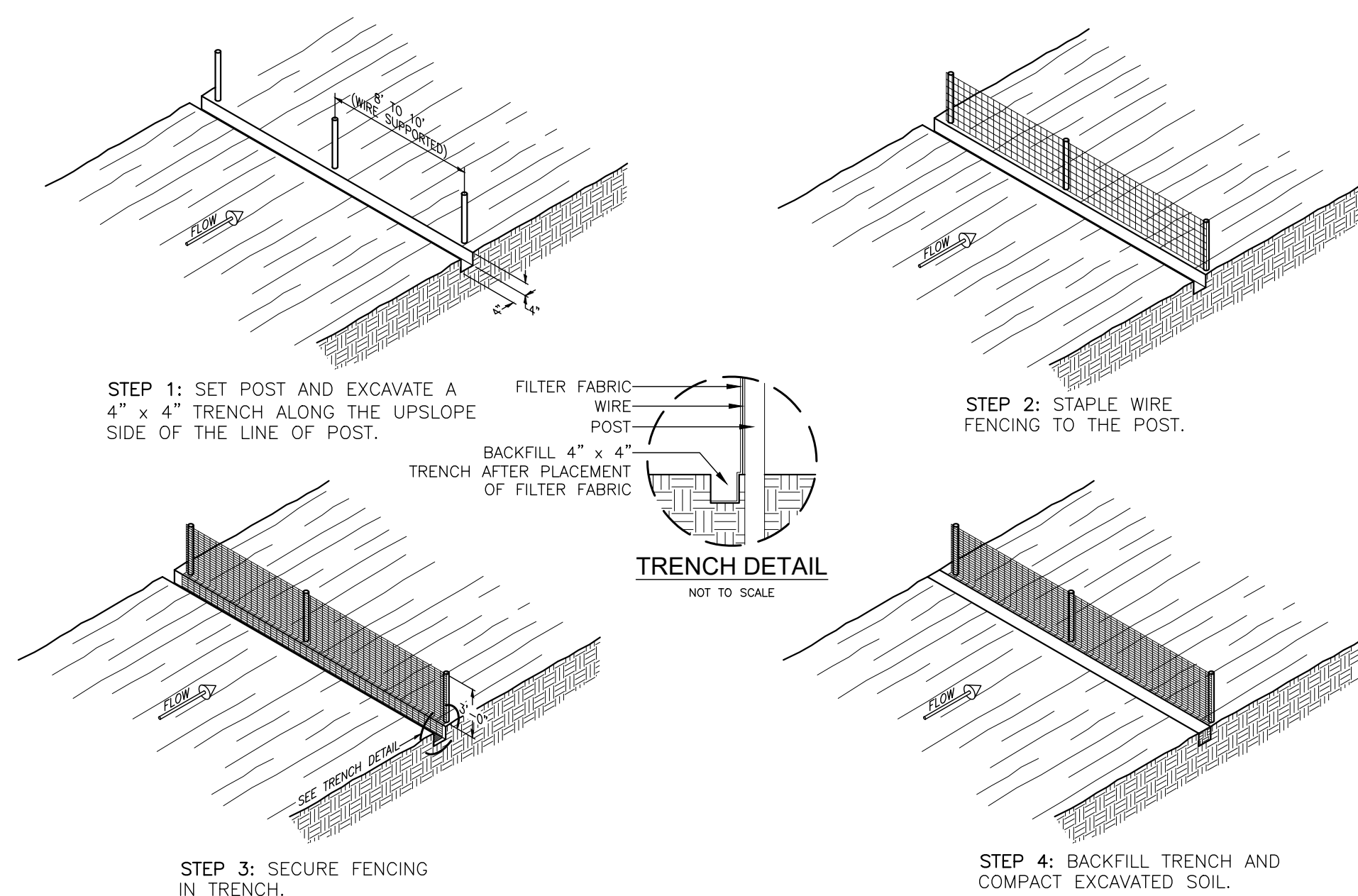
DRAINAGE BACKFILL DETAIL
(RIGID DRAINAGE PIPE)
NOT TO SCALE



WATER & SEWER PIPE BACKFILL DETAIL
(POLYVINYL CHLORIDE AND POLYETHYLENE)
NOT TO SCALE



ISOMETRIC VIEW SHOWING
GEOTEXTILE FABRIC INLET TRAP
NOT TO SCALE



TEMPORARY WIRE SUPPORTED FILTER
FABRIC FENCING CONSTRUCTION
NOT TO SCALE